

# Truma AquaGo Burner Assembly Replacement

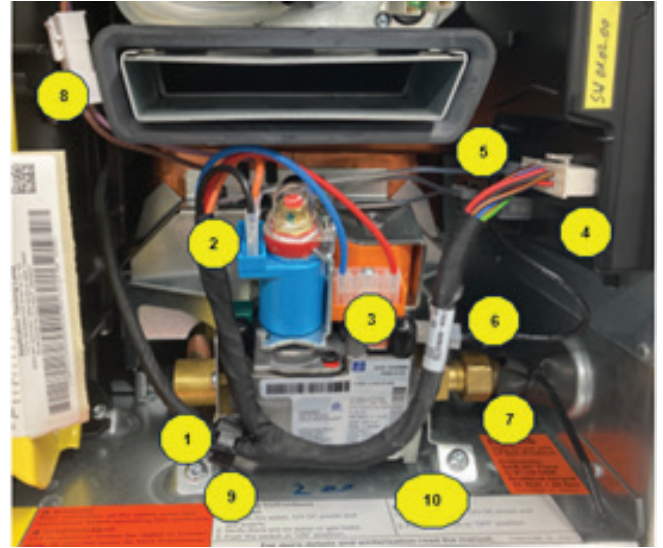
NOTE: The service and installation must be performed by professionals and in accordance with NFPA 1192, RVIA standards, and local requirements.

## Listing of required tools

- a. T10 T15, T25 screwdrivers
- b. Needle nose pliers
- c. 3/4 and 11/16 wrenches
- d. Torque wrench capable of reading foot pounds or Newton meters
- e. Manometer

## Truma AquaGo Gas Valve Burner Assembly REMOVAL

- a. Shut off gas supply and 12 VDC supply to the system.
- b. Disconnect and remove the parts in the sequence shown in the picture above. Remove the PCB, for ease of access, if desired.
- c. Remove the burner assembly by sliding it straight back out of the system housing.
- d. Field scrap the burner assembly.



## Truma AquaGo Gas Valve Burner Assembly INSTALLATION

- a. Replace the burner assembly by guiding the burner fins under the heat exchanger, placing the assembly onto the bottom of the system housing, and sliding it into place against the heat exchanger. The two (2) screw holes for the feet on the front should be aligned with the front feet of the gas valve burner assembly.
- b. Secure the burner assembly by replacing the two (2) T25 torx screws into the front feet of the assembly.
- c. Replace the gas line grommet with new.
  - a. NOTICE – HARD COPPER GAS PIPE MUST BE RUN THROUGH AQUAGO WHEN USING REAR GAS CONNECTION DUE TO BURNER TEMPERATURE. FLEXIBLE GAS LINES AND CONTROL PANEL DATA CABLE MUST BE RUN THROUGH SIDE GAS CONNECTION OPENING ONLY.
- d. Reconnect the gas line to the inlet on the gas valve using a 3/4" wrench with an 11/16" wrench to counter hold the line to prevent damage. Torque the gas line to 14.75 ft · lbf / 20 Nm.
- e. Secure a cable tie around the gas line grommet to maintain a sealed system within the housing. Ensure not to damage the gas line grommet when installing the cable tie.
- f. Reinstall the PCB, if removed.
- g. Turn on the gas supply and 12 VDC power supply to the system.
  1. Perform a drop pressure test of propane system.
  2. Switch on the appliance and perform a functional test.