



Hood Mounting Brackets

Classification

Recall 198 – Remedy C1

Model	Model Year(s)
Vista/Sunstar	2016 - 2022
Adventurer	2019 - 2022

Disclaimer: Read the entire instructions carefully before starting the procedure. If you have any questions, please contact the Winnebago Industries Technical Service Department by calling 1-866-653-4329 or by email: techservice@wgo.net. This document is confidential and is intended for dealer use only.

Condition

On certain Winnebago vehicles, the adhesive application may have been done incorrectly on the hood mounting brackets. This hood bracket adhesive could potentially fail over time, resulting in the bracket separating from the vehicle.

Correction

Certain Winnebago vehicles require inspection and potential rework of improperly applied adhesive on hood mounting brackets to prevent future separation and ensure structural integrity.

	Part Number	Description	Quantity
Part Required	RC7951-26-798	RECALL #198 HOOD BRKT REM C1	1

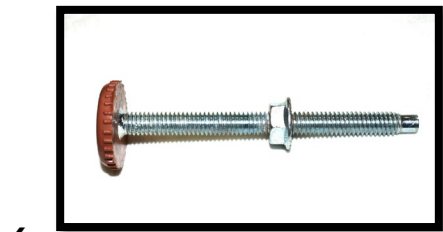
Parts/Kit Image Reference

Part/s Required – RECALL #198 HOOD BRKT REM C1

Kit Contains:

1. Rivet – 118626-02-01A Mill & 118626-02-02A Black (6 of each Supplied) Only Install 6. (If Kit includes additional colors, please color match to the vehicle's front hood)
2. Rivet Guide – 361349-01-01A (1)
3. 1" Washer - 077071-01-000 (4)
4. Long Hood Adjustment Bolt - 058786-03-000 (4)

Part/s Required



Shop Supplies

1. Flashlight
2. Mirror
3. Rivet Gun
4. Drill with 13/64" Drill Bit
5. 1/2" & 3/8" Wrenches
6. Oscillating Saw or other Implement Capable of Cutting 14 GA Steel.
7. Torque Wrench Capable of 66 in-lbs. TM

Steps & Procedures

Step 1 – Bracket Inspection

Objective: Ensure proper inspection of critical brackets for adhesion and structural integrity before proceeding with rework.

1. Open the front hood to gain appropriate access for inspection. The front hood can be opened via opening 2 locking twist latches.
2. Identify critical brackets that require inspection, see page 6 for instructions on identification.
3. Physically inspect each bracket for loss of adhesion by trying to wiggle the bracket. The adhered base of the bracket should firmly hold its position.
4. If any critical brackets are loose or missing, contact Winnebago Tech Service by email: techservice@wgo.net (See the last page of these instructions for directions on how to send Winnebago the necessary information)
5. If no issues are found with the adhesion of the critical brackets to the fiberglass, move onto Step 2 – Rework Bracket Attachment.

Step 2 – Rework Bracket Attachment

Objective: Safely remove the front hood to access critical brackets, replace the hood stop bumper brackets with longer adjustment bolts, and ensure no damage occurs to the fiberglass during the process.

1. Remove the front hood for access to the critical brackets.
 - Unclip the hood linkage rod from the hood on the driver's side, then remove the main support rod from the brackets attached to the hood. (See Figure 1 – Blue Arrows)
2. Using a saw or other implement, cut off or otherwise remove the 4 hood stop bumper brackets (These will be discarded as they are no longer needed). (See Figure 1 – Outlined in Red Dashes & Figure 2 - Red Colored Brackets). Be careful not to damage the fiberglass.
3. Using a ½” wrench, remove the hood adjustment bolt and locking nut on the front side of the bracket for each of the 4 hood stops. (See Figure 1 & 2 – White Circles)
4. Replace the existing hood adjustment bolt with the supplied longer hood adjustment bolt and the original locking nuts. Ensure to torque nut to 66 in-lbs.

Figure 1

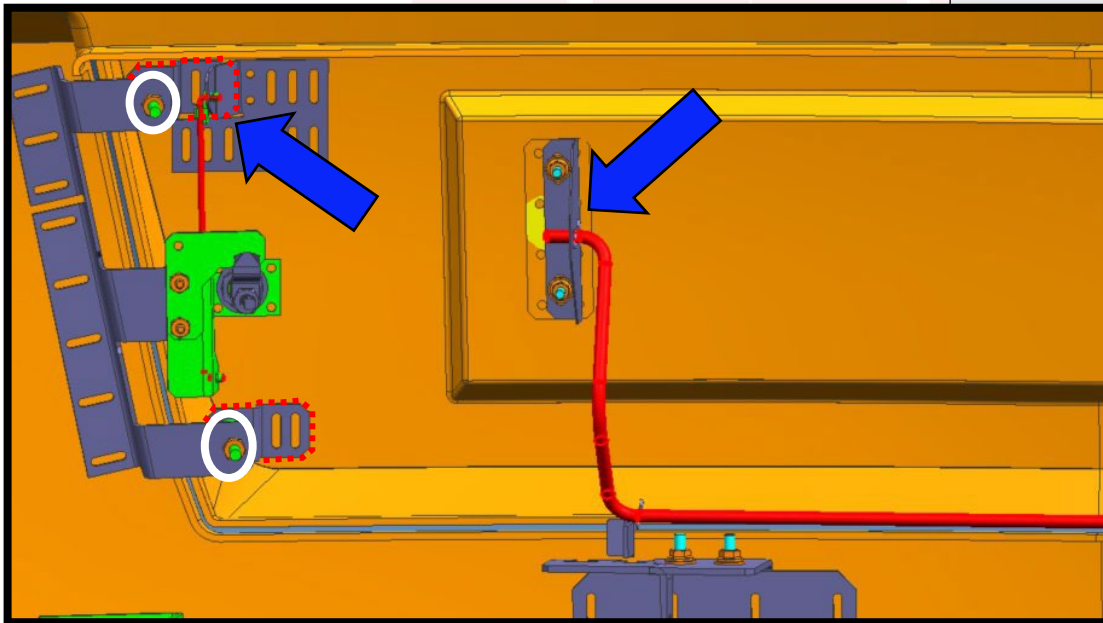
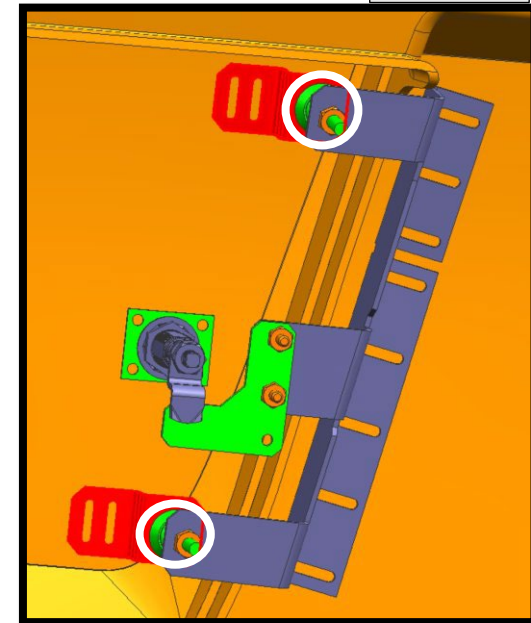


Figure 2



Step 2 – Rework Bracket Attachment - Continued

Objective: Drill holes in the front face of the coach for each critical bracket, ensuring proper alignment and secure rivet installation.

1. Using the provided drilling template, drill holes through the fiberglass and bracket for each critical bracket.
 - For the critical brackets on either side of the hood cutout, align the rivet guide so that it is flush with the faces of the fiberglass. Each side bracket will get two rivets, an upper and a lower. Keep the notch pointed up for all locations.
 - a. For the lower rivet, rest the bottom edge of the guide against the top edge of the lower hood stop flange on the critical bracket. (See Figure 3 – Yellow Highlight = Location to set at, Green Highlight = Rivet Guide)
 - b. For the Upper rivet, rest the top edge of the guide against the bottom edge of the upper hood stop flange of the critical bracket. (See Figure 3 – Yellow Highlight = Location to set at, Green Highlight = Rivet Guide)
 - c. Removal of the hood latch plate from the critical bracket may be necessary for better access. Use a 3/8 wrench to remove the two mounting bolts. (See Figure 4 – Highlighted in Two Red Circles)
2. Install the rivets supplied with the painted head of the rivet visible on the front of the coach. Select the color of rivet that best aligns with the color scheme of that specific coach.
 - a. Because the rivet hole may have hit a slot in the bracket, install the supplied washer on the back of the rivet. It may be necessary to tape the washer in place. It may also be necessary to trim the washer to allow fitment.
 - b. Ensure that the rivets securely hold the bracket.
 - c. Verify that the mandrel of the rivet breaks off properly, ensuring that no part of it protrudes and poses a potential scratching or poking hazard. Use side cutters to trim off any excess mandrel if necessary.
 - d. Reinstall the hood and hood latch plate if removed, adjusting as necessary to ensure proper alignment. (See Figure 5 – Red Arrow) The new hood stops will also need to be adjusted to ensure the hood sits flush. The torque specification for a lubricated 1/4"-20 grade 5 bolt is 76 in-lbs.
3. If all Critical Bracket connection points have either passed inspection or have been reworked, the supplied rivets have been properly installed, and the bump stops have been replaced while the existing hood bumper stop brackets have been trimmed or removed, the rework is Complete.

Figure 3

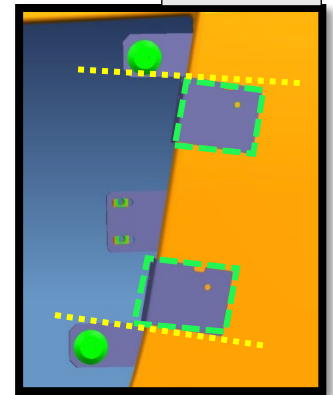


Figure 4

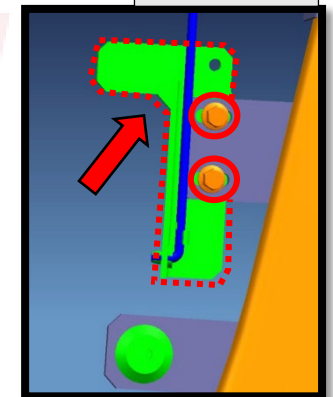
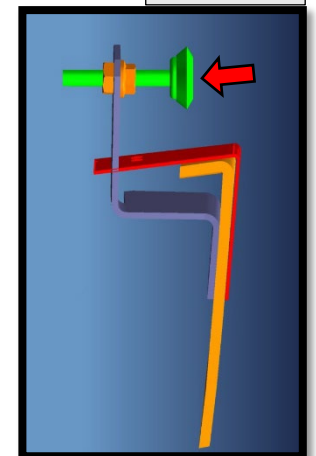


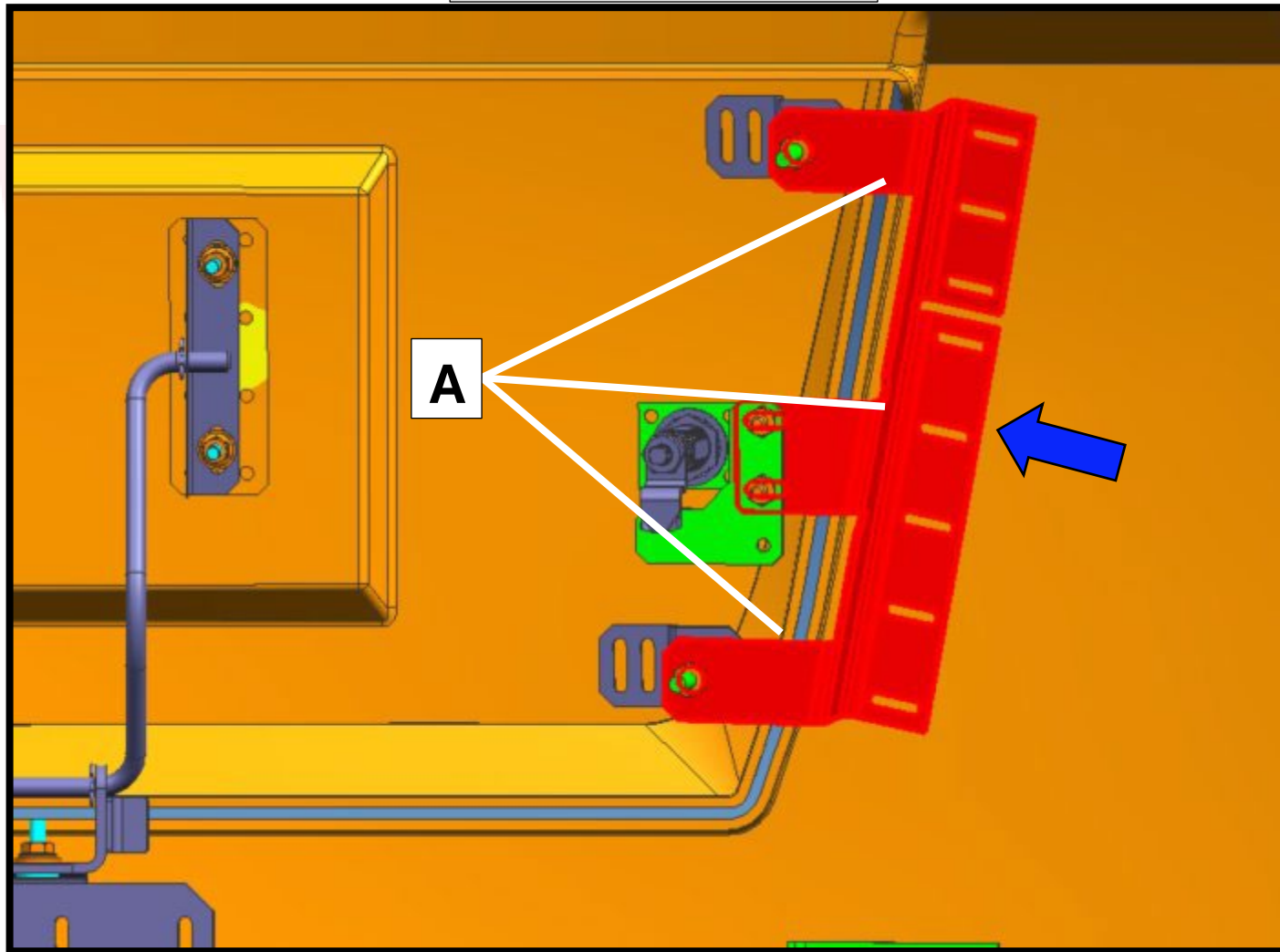
Figure 5



Critical Brackets – (Vista/Sunstar 2016–2022 & Adventurer 2019-2022)

1. There are 2 critical brackets on the front cap.
 - Total of 2 hood latch brackets (Driver- B & Passenger Side - A), 1 on either side of the hood cutout. (See Figure 6 - Blue Arrow for Reference of the Passenger Side Bracket)

Figure 6 – Passenger Side




Documenting Adhesive Failures/Ordering Parts: Email to techservice@wgo.net

Important Notes:

- If there are any missing brackets, please identify which ones they are in the email. If you have any loose brackets, please remove these brackets and take a photograph of the front end of your vehicle. This is essential for Winnebago's documentation process.
- When capturing the photographs, please take close-up images of the failed bracket locations to ensure a detailed visual inspection.
- In your email correspondence, specify the total number of missing or loose brackets on your vehicle. Additionally, identify each missing bracket by its designated letter, and by either passenger or driver side. Refer to the enclosed letter/bracket location guide for assistance: Page 6

See below for email correspondence instructions:



To techservice@wgo.net

Cc

Subject Recall Number Here - Serial Number Here (No Hyphenations) 🛡️ No Label

1. **Dealership Name and Dealer Number *** : (Clearly state the name of the dealership along with the corresponding dealer identification number)
2. **Address of Dealership *** : (Include the complete address for the dealership, ensuring accuracy for effective communication)
3. **Repair Order Number *** : (Specify the relevant repair order number associated with your vehicle's service)
4. **Loose/Missing Bracket(s) Specification *** : Specify which Bracket(s) are loose/missing by referencing the Location Letter(s).
5. **Photograph(s) *** : (Attach at least one photograph (More may be necessary) that clearly shows the affected area. Note: Photographs are a highly required component of this submission)

For reference regarding the location of bracket(s) please see the **Critical Bracket Reference Page of the Work Instructions.**



Hood Mounting Brackets

Classification

Recall 192 – Remedy C2

Model

Sightseer/Sunova

Model Year

2016-2018

Disclaimer: Read the entire instructions carefully before starting the procedure. If you have any questions, please contact the Winnebago Industries Technical Service Department by calling 1-866-653-4329 or by email: techservice@wgo.net . This document is confidential and is intended for dealer use only.

Condition

On certain Winnebago vehicles the adhesive application may have been done incorrectly on the hood mounting brackets. This hood bracket adhesive could potentially fail over time, resulting in the bracket separating from the vehicle.

Correction

Correct the Wiring Installation for the run relay and the battery mode control relay.

	Part Number	Description	Quantity
Part Required	RC7952-26-798	RECALL #198 HOOD BRKT REM C2	1

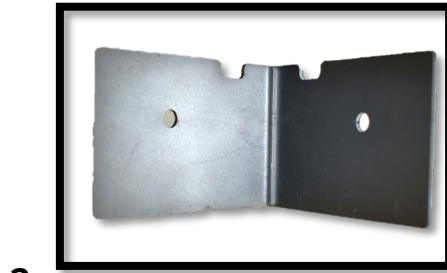
Parts/Kit Image Reference

Part/s Required – RECALL #198 HOOD BRKT REM C2

Kit Contains:

1. Rivet – 118626-02-01A Mill & 118626-02-02A Black (6 of each Supplied) Only Install 6. (If Kit includes additional colors, please color match to the vehicle's front hood)
2. Rivet Guide – 361382-01- (1)
3. 1" Washer - 077071-01-000 (5)

Part/s Required



Shop Supplies

1. Flashlight
2. Rivet Gun
3. Drill with 13/64 Drill Bit

Steps & Procedures

Step 1 – Bracket Inspection

Objective: Ensure proper inspection of critical brackets for adhesion and structural integrity before proceeding with rework.

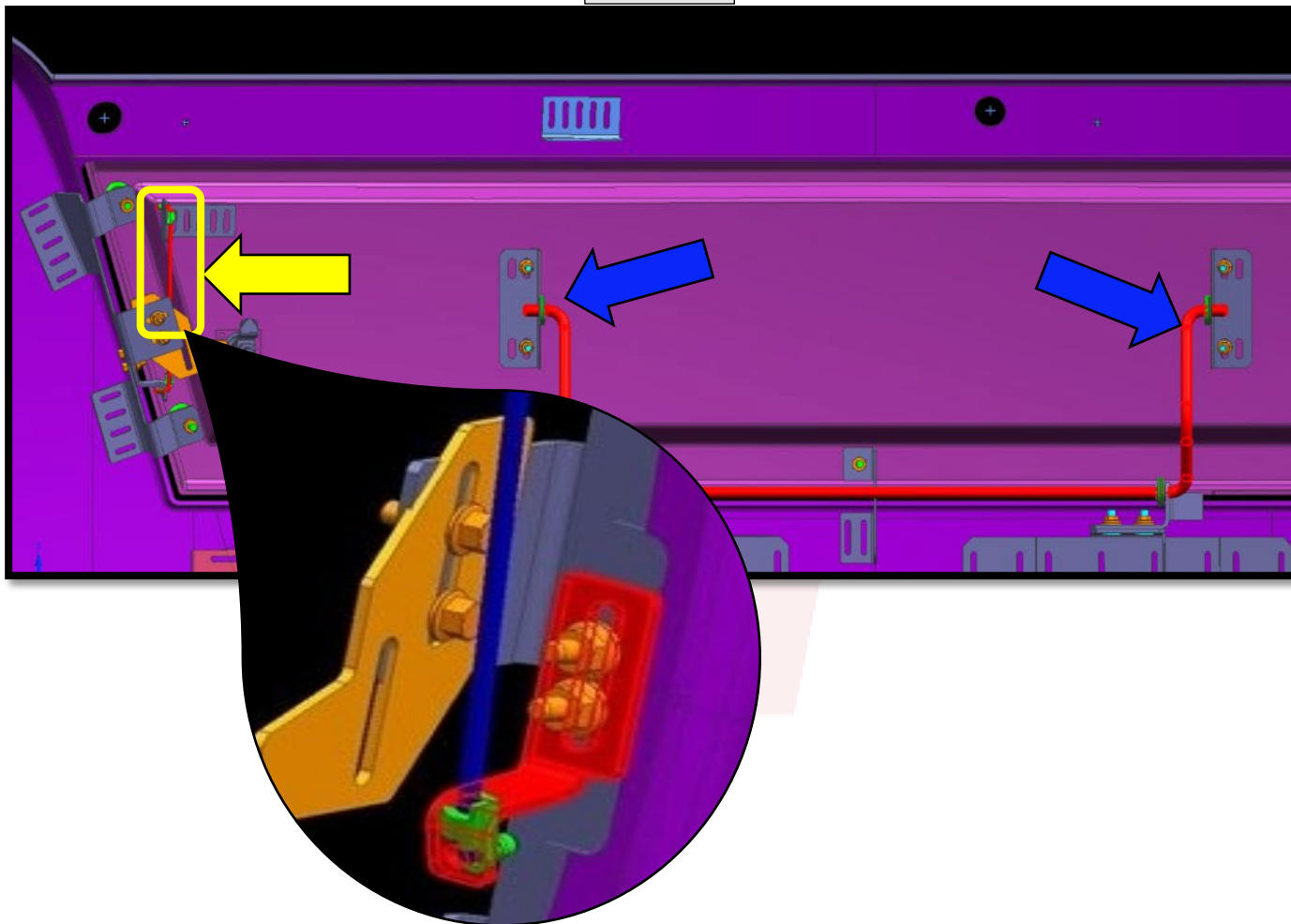
1. Open the front hood to gain appropriate access for inspection. The front hood can be opened by opening 2 locking twist latches.
2. Identify critical brackets that require inspection, reference page 6 for instruction on identification. TM
3. Physically inspect each bracket for loss of adhesion by trying to wiggle the bracket. The adhered base of the bracket should firmly hold its position.
4. If any critical brackets are loose or missing, contact Winnebago Tech Service by email: techservice@wgo.net (See the last page of these instructions for directions on how to send Winnebago the necessary information)
5. If no issues are found with the adhesion of the critical brackets to the fiberglass, move onto Step 2 – Rework Bracket Attachment.

Step 2 – Rework Bracket Attachment

Objective: Safely remove the front hood to gain access to the critical brackets for rework.

1. Remove the front hood for access to the critical brackets.
 - Unclip the hood linkage rod from the hood on the driver's side, then remove the main support rod from the brackets attached to the hood. (See Figure 1 – Yellow and Blue Arrows)

Figure 1



Step 2 – Rework Bracket Attachment Continued

Objective: Accurately drill holes and install rivets through the fiberglass and brackets for each critical bracket, ensuring proper alignment and secure fastening to maintain structural integrity.

2. Using the provided drilling template, drill a hole through the fiberglass and bracket for each critical bracket.
 - a. For the critical brackets on either side of the hood cutout, align the guide so that it is flush with the fiberglass as shown (See Figure 2 – Brackets are Highlighted in Red). Each side bracket will get two rivets, an upper and a lower.
 - For the lower rivet, point the notch down. The side with the notch should be flush with the top edge of the visible portion of the critical bracket with the lower hood stop. (See Figure 2 – Orange Dashes)
 - For the Upper rivet, point the notch up. The side with the notch should be flush with the bottom edge of the visible portion of the critical bracket with the upper hood stop. (See Figure 2 – Orange dashes)
 - b. For the center critical bracket at the bottom edge of the hood cutout, point the notch towards the passenger side. The guide should be flush with the fiberglass as shown, and the edge with the notch should be flush against the critical bracket.
3. Install the supplied rivets with the painted head of the rivet visible in the hood opening.
 - a. Select the color of rivet that best aligns with the color scheme of the vehicle you are reworking.
 - b. Ensure that the rivets securely hold the bracket. For all critical brackets, because the rivet hole may have hit a slot in the bracket, install the supplied washer on the back of the rivet. It may be necessary to tape the washer in place. It may also be necessary to trim the washer to allow fitment.
 - c. Verify that the mandrel of the rivet breaks off properly, ensuring that no part of it protrudes and poses a potential scratching or poking hazard. Use side cutters to trim off any excess mandrel if necessary.
4. Reinstall hood and hood strut.
5. If all Critical Bracket connection points have either passed inspection or have been reworked, and the supplied hardware has been properly installed, the rework is complete.

Figure 2

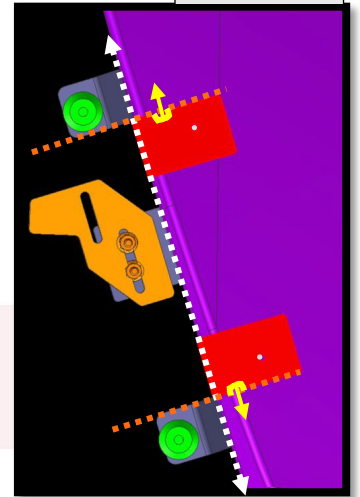
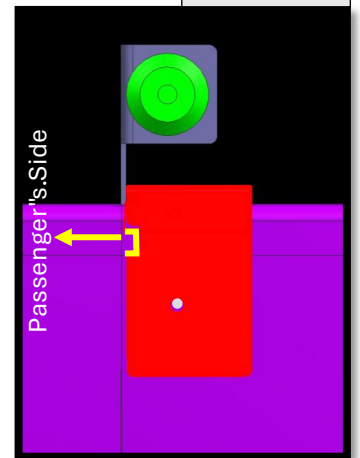


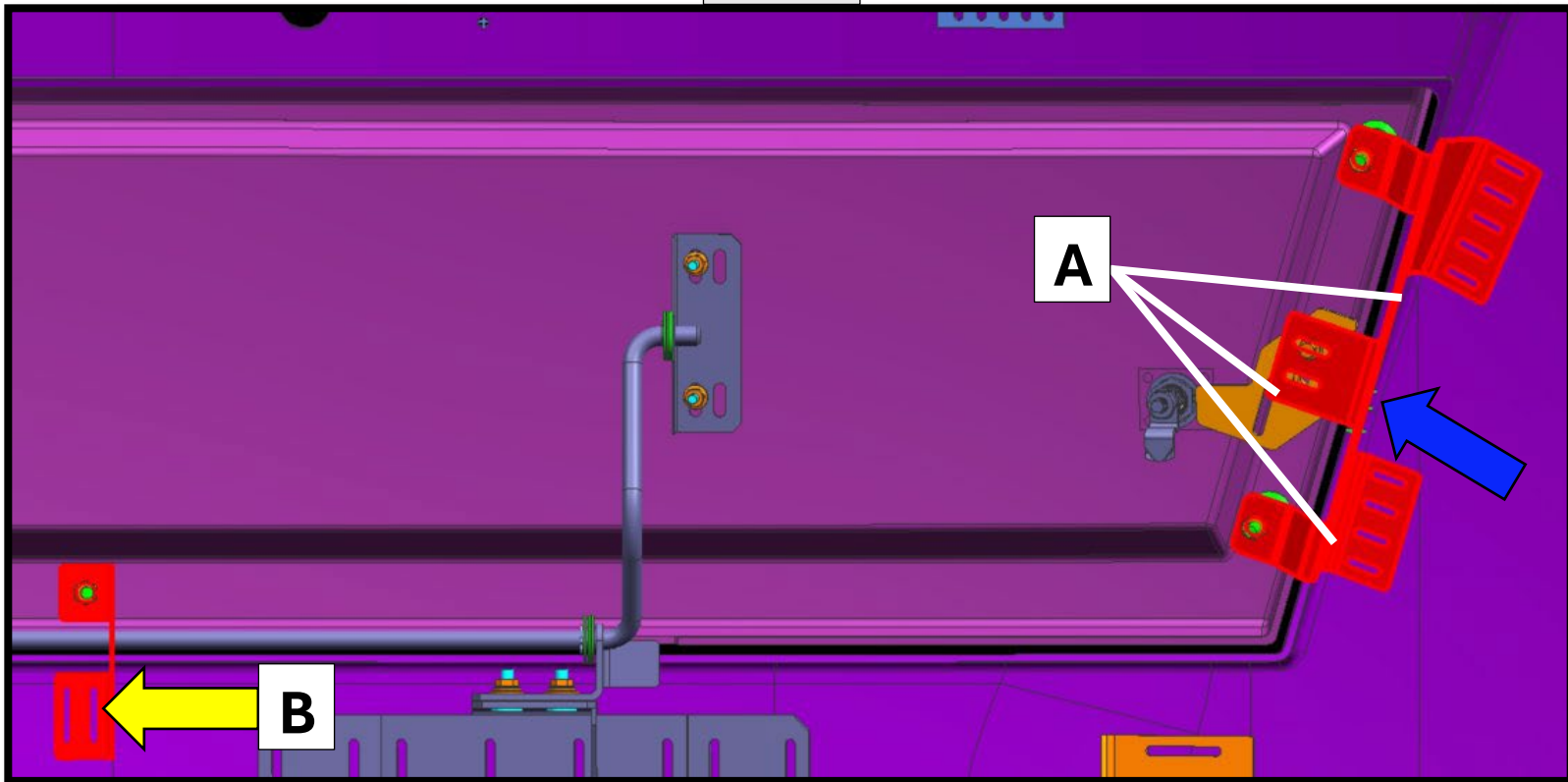
Figure 3



Critical Brackets – D Series 2016-2018

1. There are 3 total critical brackets on the front cap.
 - a. A total of 2 singular hood latch brackets (Driver & Passenger Side), 1 on either side of the hood cutout (A). (See Image 2 - Blue Arrow for Passenger Side Reference).
 - b. Total of 1 hood stop bracket in the center along the bottom edge of the hood cutout (B). (See Image 2 - Yellow Arrow)

Figure 2




Documenting Adhesive Failures/Ordering Parts: Email to techservice@wgo.net

Important Notes:

- If there are any missing brackets, please identify which ones they are in the email. If you have any loose brackets, please remove these brackets and take a photograph of the front end of your vehicle. This is essential for Winnebago's documentation process.
- When capturing the photographs, please take close-up images of the failed bracket locations to ensure a detailed visual inspection.
- In your email correspondence, specify the total number of missing or loose brackets on your vehicle. Additionally, identify each missing bracket by its designated letter, and by either passenger or driver side. Refer to the enclosed letter/bracket location guide for assistance: Page 6

See below for email correspondence instructions:



To techservice@wgo.net

Cc

Subject Recall Number Here - Serial Number Here (No Hyphenations) 🛡️ No Label

1. **Dealership Name and Dealer Number ***: (Clearly state the name of the dealership along with the corresponding dealer identification number)
2. **Address of Dealership ***: (Include the complete address for the dealership, ensuring accuracy for effective communication)
3. **Repair Order Number ***: (Specify the relevant repair order number associated with your vehicle's service)
4. **Loose/Missing Bracket(s) Specification ***: Specify which Bracket(s) are loose/missing by referencing the Location Letter(s).
5. **Photograph(s) ***: (Attach at least one photograph (More may be necessary) that clearly shows the affected area. Note: Photographs are a highly required component of this submission)

For reference regarding the location of bracket(s) please see the **Critical Bracket Reference Page of the Work Instructions.**