



Mercedes-Benz

Campaign No. 2024100014, November 2024

TO: ALL MERCEDES-BENZ CENTERS

SUBJECT: **Model GLB (247 platform)**
Model Year 2024

Check & Replace Right-Side Tires

Mercedes-Benz AG, the manufacturer of Mercedes-Benz vehicles, has determined that on certain Model Year 2025 GLB (247 platform) vehicles, the right-side installed tires might be damaged on the in-board surface of the side wall. Over the tire's lifecycle, the damage might lead to a leak. A sudden loss of air pressure cannot be completely ruled out and could impair driving stability, which could increase the risk of a crash. An authorized Mercedes-Benz dealership will check the potentially affected tires on the affected vehicles and replace them, if necessary.

Prior to performing this Campaign:

- **VMI must be checked before performing campaigns to verify that the campaign is required on a specific vehicle. Always check for any other open campaigns and perform accordingly.**
- Please review the entire Campaign bulletin and follow the repair procedure exactly as described.

Approximately 415 vehicles are affected.

Order No. P-RC-2024100014

Check & Replace Right-Side Tires

Model 247

Check/Test Procedure

1. Check vehicle tires on passenger side (front and rear axle) for sidewall damage (vehicle-facing side).
 - a. If **damage or cuts** are present (**Figure 1**): **Carry out Work Procedure.**
 - b. If only **superficial marks or cuts** with a depth of **less than 1 mm** are present (**Figure 2**): **Do not replace tires; End measure.**

i Always document findings of Check/Test Procedure with informative photos and notes on workshop order.

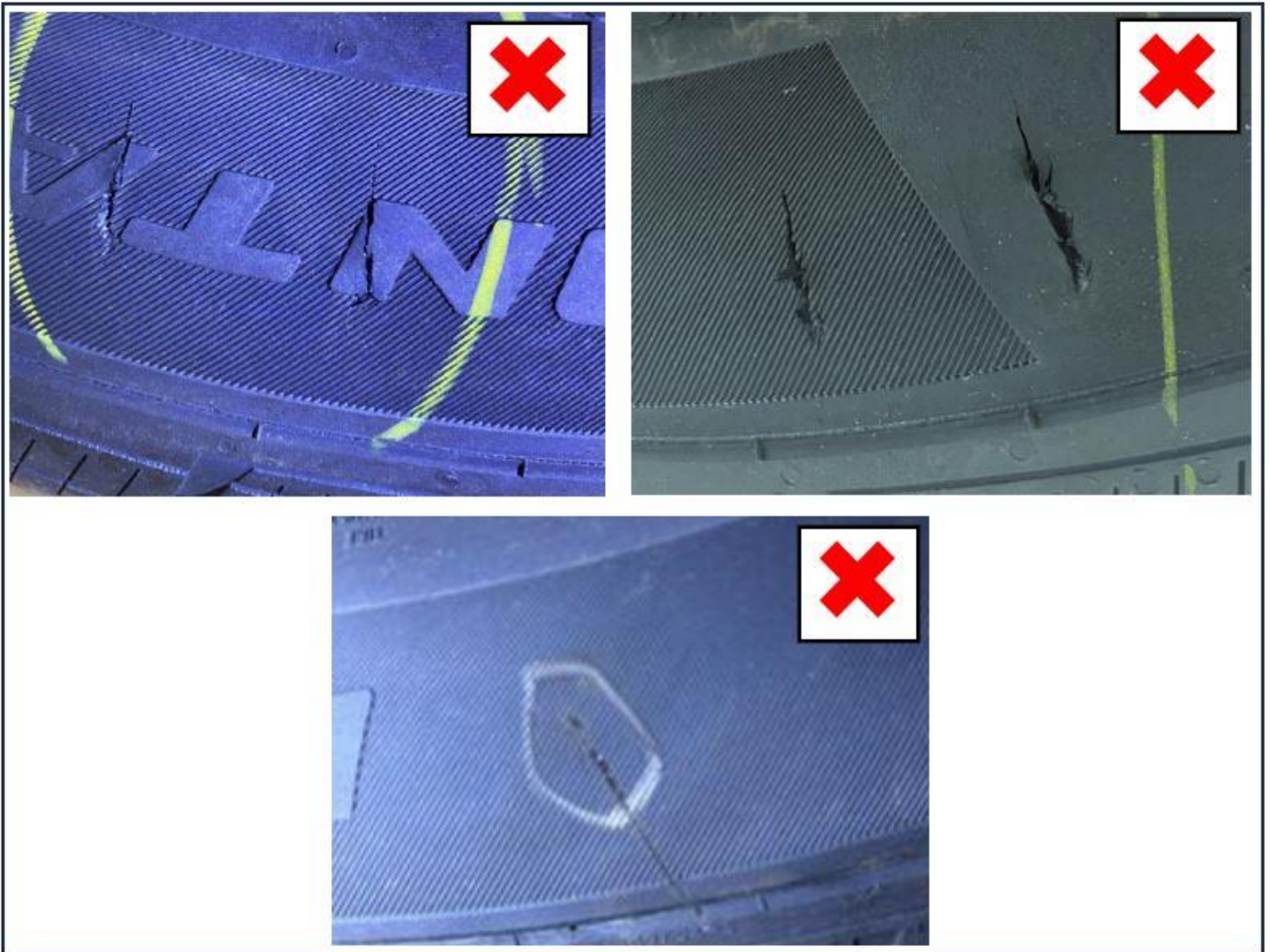


Figure 1: Damage to sidewall (tires must be replaced)

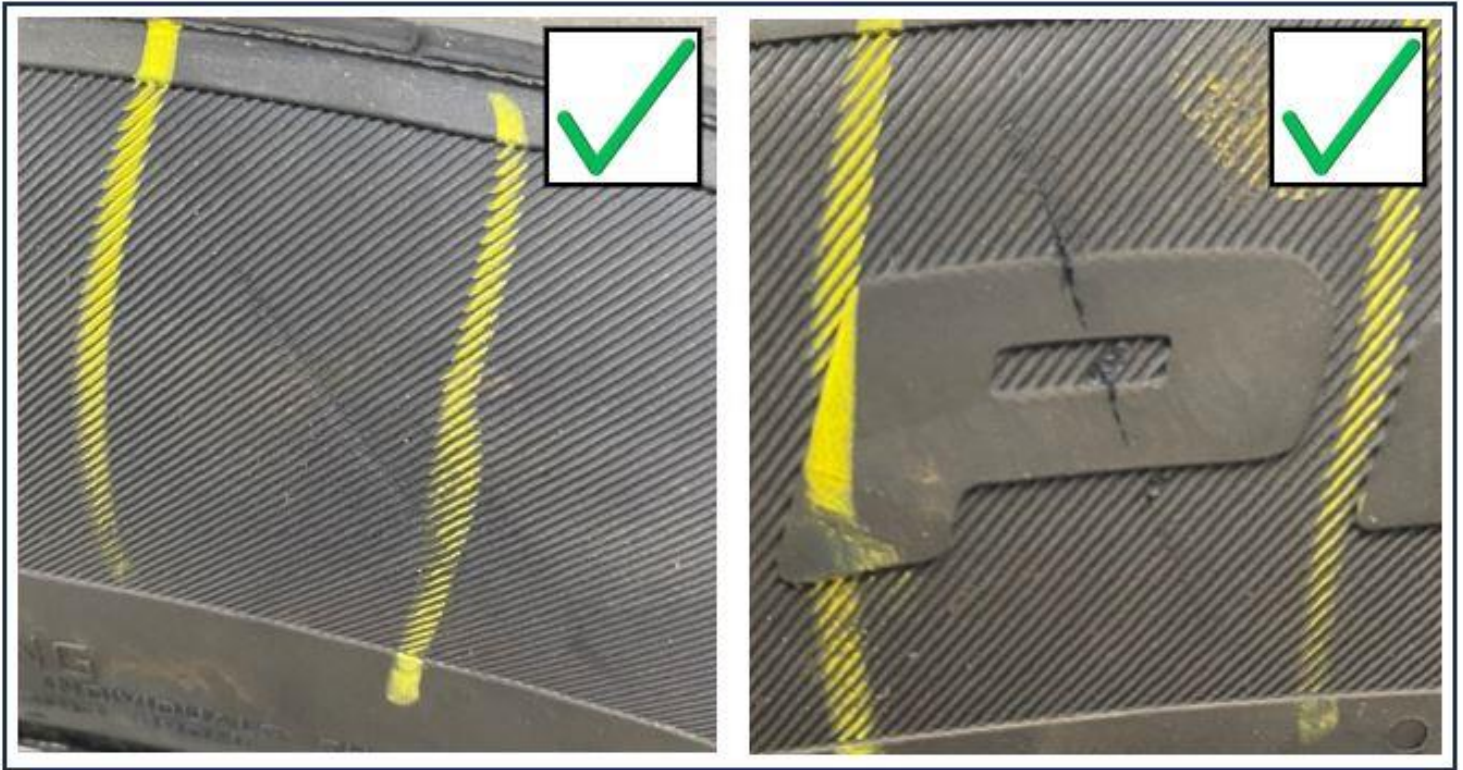


Figure 2: Superficial marks on sidewall with a depth of less than 1 mm (do not replace tires)

Work Procedure

2. Replace tires that have damage on the sidewall (vehicle-facing side).

i For basic information, see AR40.10-P-1030MFA.

i Only replace damaged tires. However, **if the tread depth of a damaged tire is < 4 mm, then the opposite tire on the same axle must also be replaced.**

i Dispose of disassembled tires, valves, and balance weights following local legal requirements.

Primary Parts Information

Qty.	Part Name	Part Number
As required*	Tire	--**

* Determine quantity required after performing Check/Test Procedure

** Tires are to be procured through the MBUSA Dealer Tire Portal and not a secondary supplier.

i Balance weights are to be used as required and are included in the budgeting.

i Small parts such as screws, lock nuts, sealing rings, cable ties, fluids, sealant, etc. are not listed in the parts list. The required small parts are taken into account in the budgeting.

i **Note:** The following allowable labor operation should be used when submitting a warranty claim for this repair:

Warranty Information

Damage Code	Operation Number	Description	Labor Time (hrs.)
40 901 02	12-2301	Operations: Check 2 tires	0.2
	12-2302	Operations: Replace one tire (after check)	0.9
	12-2303*	Operations: Replace each remaining tire (after check)	0.5

* Operation item may be claimed for each additional tire that is replaced.

i **Note:** Always check Xentry Operation Time (XOT) for the current OP-Code times. Labor times are subject to change and updates may not be reflected in this document.