


# RECALL 24V771 / 2024-610 REMEDY INSTRUCTIONS

 <b>FOREST RIVER</b>	Make(s): MANY, SEE BELOW Model(s): MANY, SEE BELOW Model Year(s): MANY, SEE BELOW	Repair Code: RC-048-37-00-004622 Allotted Time: .50 HRS – PER A/C Inspection Code: RC-048-05-00-004621 Allotted Time: .25 HRS – PER A/C
	Concern: The GE “Soft Start” add-on component to the air conditioner may cause a fire.	Photo(s) Required: NO Prior Authorization Required: YES Part(s) Kit Number: N/A Part(s) Return: N/A – FIELD DESTROY

**Turn off LP Gas at LPG Tank(s). Disconnect the vehicles' battery Positive and Negative, disconnect any House battery(s) Positive and Negative, if equipped with a generator ensure it is off and lastly, ensure the vehicle is disconnected from shore power. Block any tires/wheels to prevent the vehicle from rolling. Failure to do so may result in electrocution, fire or other personal injury, property damage and/or death.**

## MODELS:

CERTAIN – 2024 – AHARA, TRAVEL TRAILER RECREATIONAL VEHICLES  
CERTAIN – 2023 – ALTA, TRAVEL TRAILER RECREATIONAL VEHICLES  
CERTAIN – 2021 – 2025 ENCORE, CLASS A MOTORHOMES  
CERTAIN – 2024 – ENTRADA, CLASS C MOTORHOMES  
CERTAIN – 2022 – 2025 – FR3, CLASS A MOTORHOMES  
CERTAIN – 2022 – 2025 – GEORGETOWN, CLASS A MOTORHOMES  
CERTAIN – 2021 – 2023 – ISTATATA 3, CLASS C MOTORHOMES  
CERTAIN – 2021 – 2025 MIRADA, CLASS A MOTORHOMES  
CERTAIN – 2021 – 2025 PURSUIT, CLASS A MOTORHOMES  
CERTAIN – 2025 – SPORTSCOACH, CLASS A MOTORHOMES  
CERTAIN – 2023 – SUNSEEKER, CLASS C MOTORHOMES  
CERTAIN – 2025 – V-CRUISE, CLASS B MOTORHOMES  
CERTAIN – 2024 – 2025 – V-RV, CLASS B MOTORHOMES  
CERTAIN – 2025 – V-SPORT, CLASS B MOTORHOMES  
CERTAIN – 2025 – V-TOUR, CLASS B MOTORHOMES

**THIS IS AN INTERIM REMEDY PER GE TO REMOVE THE SOFT START UNTIL A REMEDY CAN BE DEVELOPED - A SECOND NOTICE WILL BE ISSUED ONCE THE REMEDY IS AVAILABLE FROM GE.**

**INSPECTION:** TO DETERMINE IF THE VEHICLE IS EQUIPPED WITH A SOFT START GE AIR CONDITIONER, IF IT IS NOT CLAIM THE INSPECTION CODE.

**REMEDY:** IF THE VEHICLE IS EQUIPPED WITH A SOFT START, PERFORM THE INTERIM REMEDY AS PER THE INSTRUCTIONS FROM GE AS STATED BELOW, AND CLAIM THE REMEDY CODE.

**PLEASE REFER TO THE INCLUDED INSTRUCTIONS ON HOW TO REMOVE THE “SOFT START” COMPONENT FROM THE AIR CONDITIONER.**

ONE SET OF INSTRUCTIONS IS FOR THE “*LOW PROFILE AIR CONDITIONER*”

ONE SET OF INSTRUCTIONS IS FOR THE “*STANDARD PROFILE AIR CONDITIONER*”



**GE APPLIANCES**  
*a Haier company*

# ICM Soft Start Removal Instruction

**PLC & PLH models**

October 2024

*Rev 1*



**For use by qualified service technicians only**  
**Follow all applicable safety procedures while performing the ICM soft start removal**

# ROOFTOP RV AC MODEL NUMBERS

This procedure applies to the following model numbers with ICM Controls ICM870-16A-BH5400 “soft start” modules installed:

PLH13BAHW	PLH13MAHB
PLH13MHHB	PLH13MHHW
PLH15BAHB	PLH15BAHW
PLH15MAHB	PLH15MAHW
PLC15MAHB	

# ROOFTOP RV AC MODEL NUMBERS

PLH13BAHW

PLH13MAHB

PLH13MHHB

PLH15BAHB

PLH15MAHB

PLC15MAHB

PLH13MHHW

PLH15BAHW

PLH15MAHW

# Safety Warning/Hazard

## **This procedure is intended to be performed by a qualified servicer!**

The equipment involved in this procedure retains and/or conducts electrical current and poses a risk of electric shock. All applicable safety procedures should be followed, including (but not necessarily limited to) taking all steps to disconnect all power (115V AC and 12VDC to the air conditioner:

- Set the RV's 12V main electrical disconnect to "Off."
- Set the generator and the inverter to "Off."
- Unplug and stow away the shore connection.
- Set the RV's main breaker set to "Off."
- Use a multimeter to verify that all power to the unit is off and that it is safe to proceed.
- Wear proper protective equipment to protect from cut hazards and eye injury.
- Wear/utilize proper fall protection when on the roof of the RV.



**Cut Resistant  
Gloves**



**Composite  
Boots**



**Safety  
Glasses**



# Applicable Safety Equipment



**Cut – Resistant  
Sleeve**



**Electrically  
Rated Gloves**



**Fall Protection**

**For use by qualified service technicians only  
Follow all applicable safety procedures while performing the ICM soft start removal**

# Tools Needed

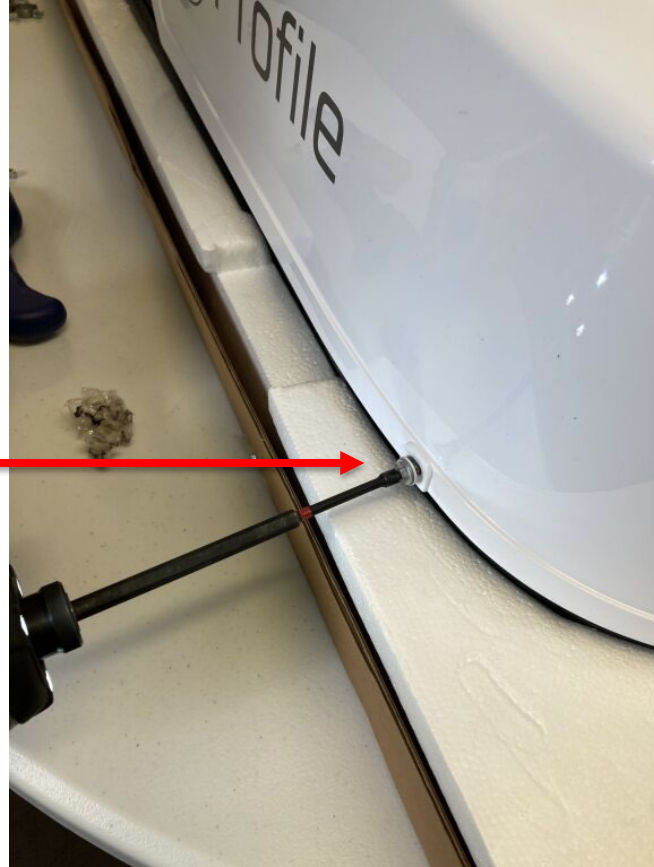
- #2 Phillips Head Screwdriver/Bit
- 7mm or 9/32 Socket or Nut Driver
- Needle Nose Pliers



**For use by qualified service technicians only**  
**Follow all applicable safety procedures while performing the ICM soft start removal**

# Shroud Removal

Remove 4-5  
outer screws



Lift Shroud

Note: Retain shroud screws for reinstallation

**For use by qualified service technicians only**  
**Follow all applicable safety procedures while performing the ICM soft start removal**

# EPP Foam Cover Removal



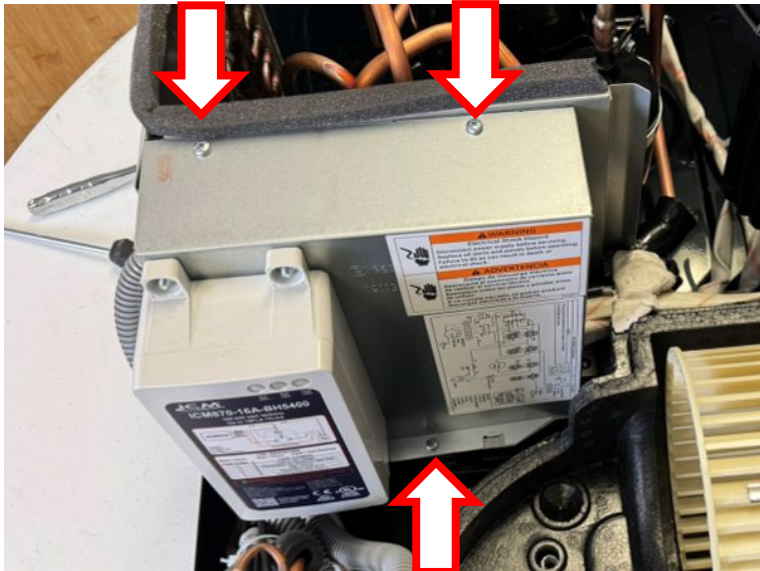
Lift top EPP foam from the bottom to separate

Note: Retain EPP foam for reinstallation

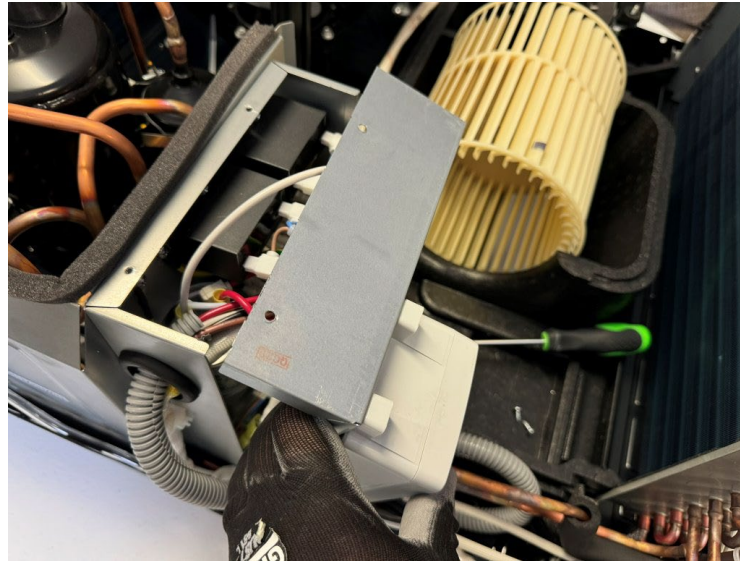
**For use by qualified service technicians only**  
**Follow all applicable safety procedures while performing the ICM soft start removal**

# Electrical Box Cover Removal

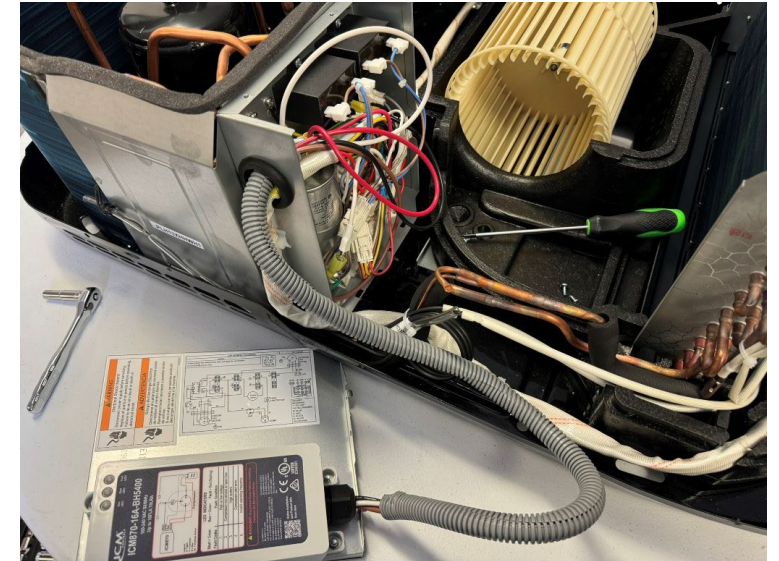
Step 1: Remove 3  
Phillips-head screws



Step 2: Lift the cover up and  
away from electrical box



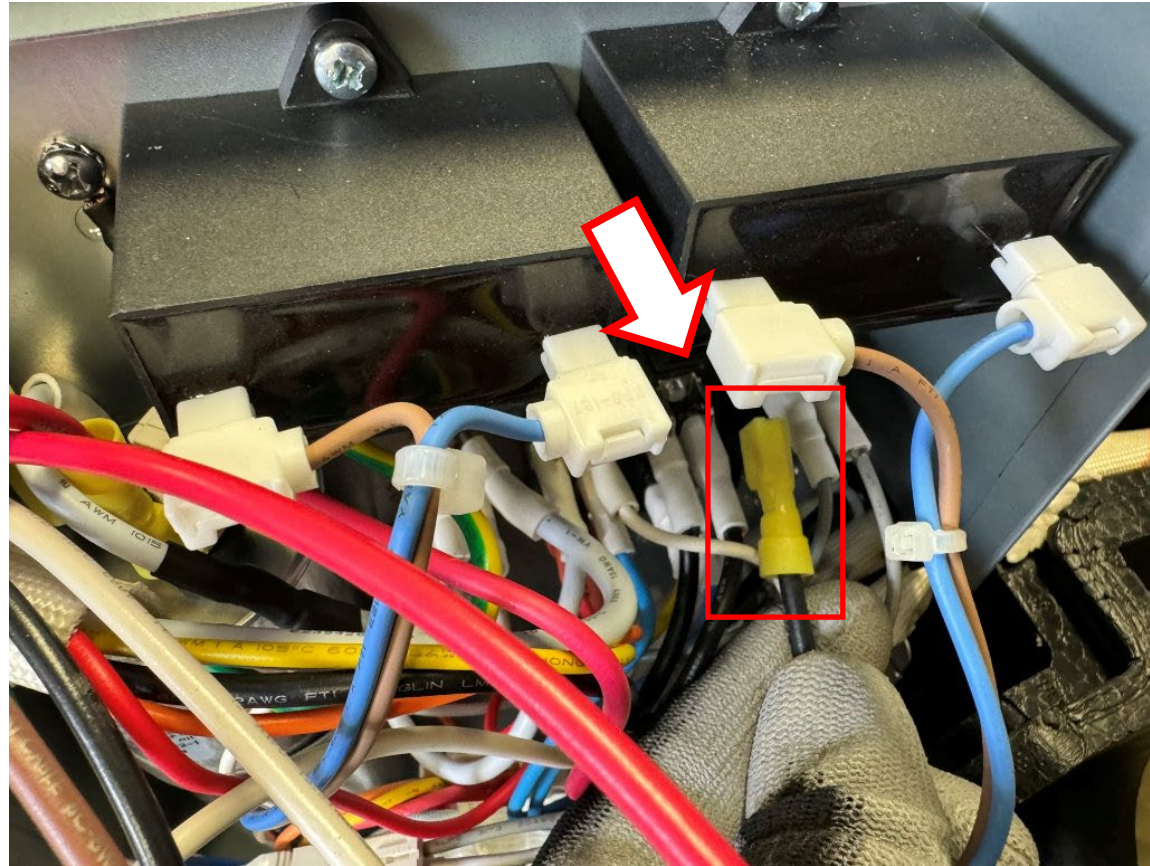
Step 3: Place soft start  
and cover next to AC



**For use by qualified service technicians only  
Follow all applicable safety procedures while performing the ICM soft start removal**

# Wire Disconnect to Remove Soft Start

Step 1: Remove BLACK wire at the terminal



**For use by qualified service technicians only**  
**Follow all applicable safety procedures while performing the ICM soft start removal**

# Wire Disconnect to Remove Soft Start

Step 2: Remove RED wire at the capacitor

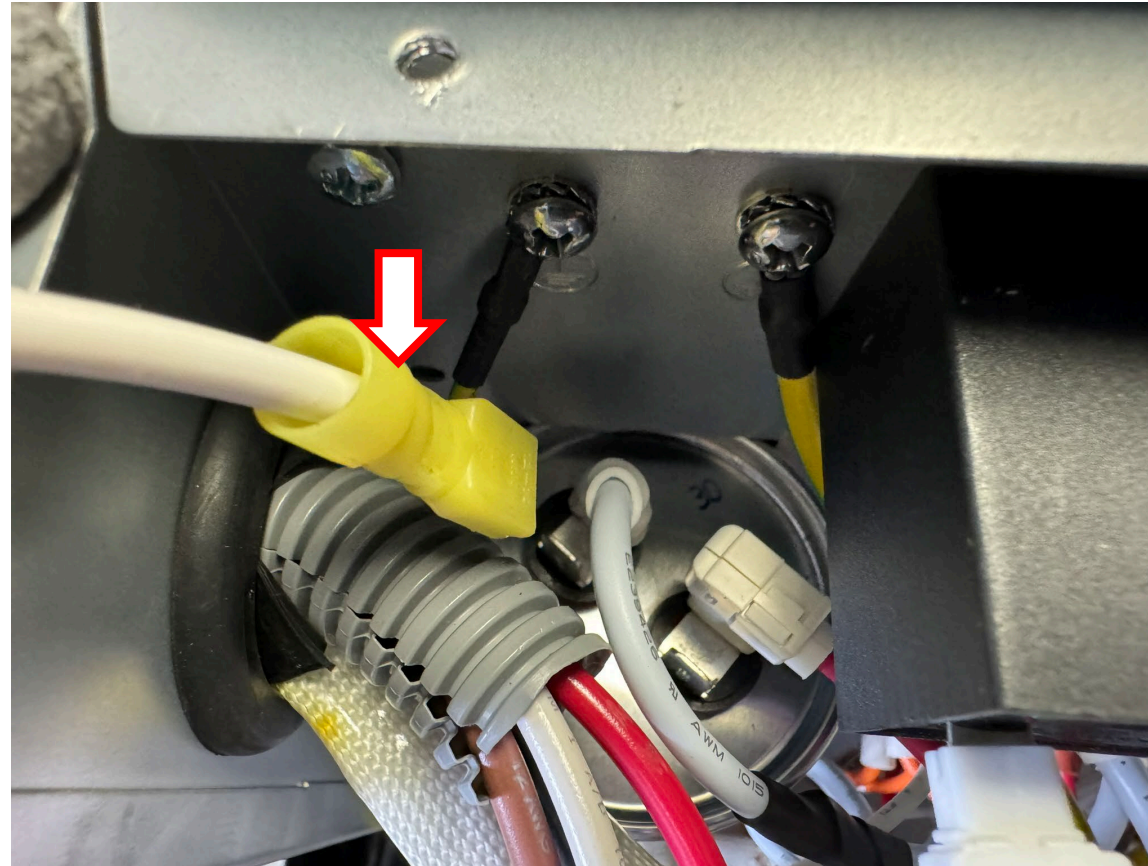


**NOTE: Do not remove the other red wire with the white connector**

**For use by qualified service technicians only  
Follow all applicable safety procedures while performing the ICM soft start removal**

# Wire Disconnect to Remove Soft Start

Step 3: Remove WHITE wire at the capacitor



**NOTE: Do not remove the other white wire with the white connector**

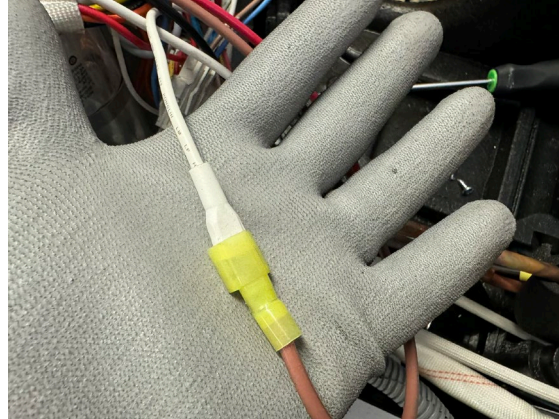
**For use by qualified service technicians only  
Follow all applicable safety procedures while performing the ICM soft start removal**

# Wire Disconnect to Remove Soft Start

## Step 4:

1. Locate the BROWN wire from the soft start connected to a WHITE wire
2. Separate white sheath to expose the lock spade connector
3. Depress the locking tab on the spade connector while pulling outward
4. Disconnect BROWN wire from WHITE wire

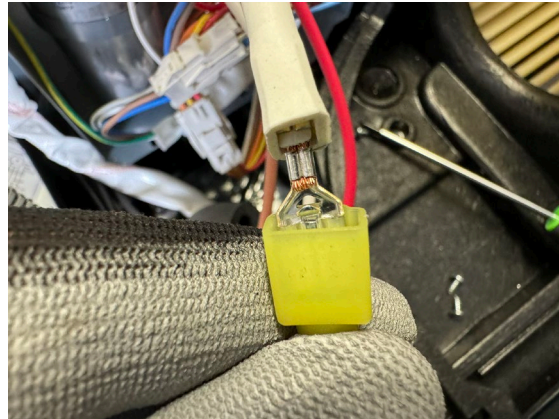
1.



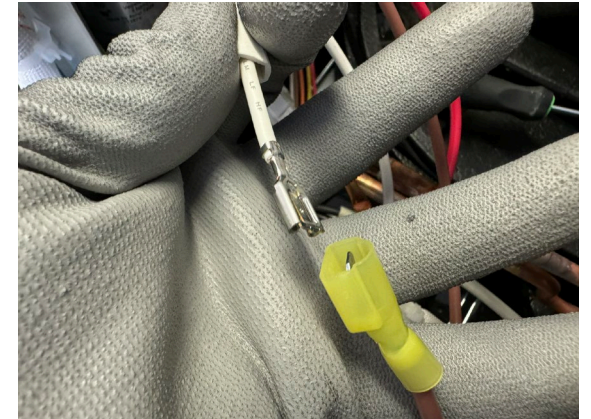
2.



3.

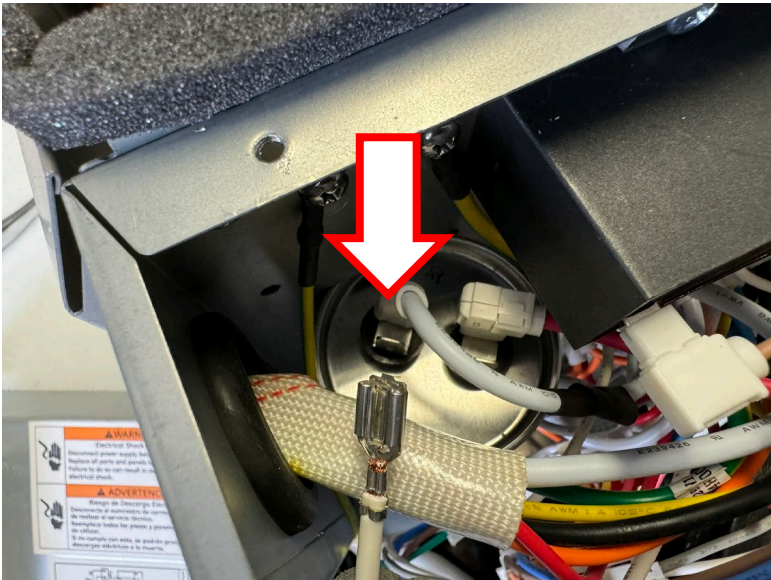


4.



# Reconnect Neutral Wire

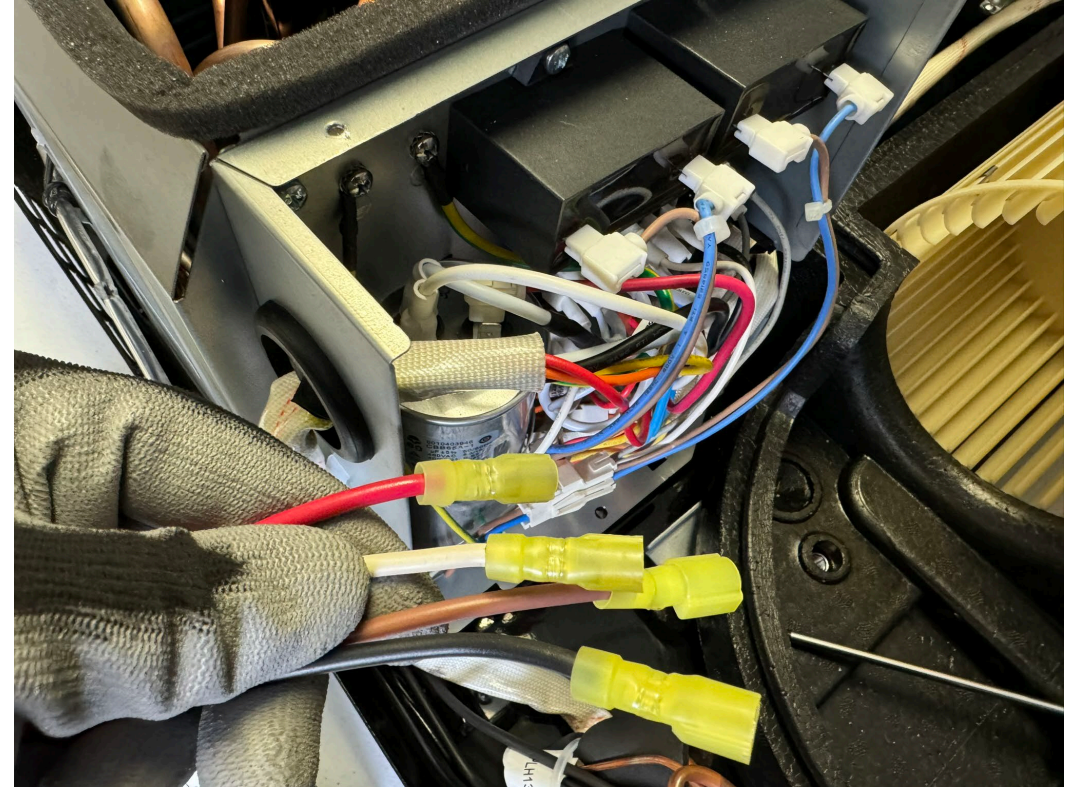
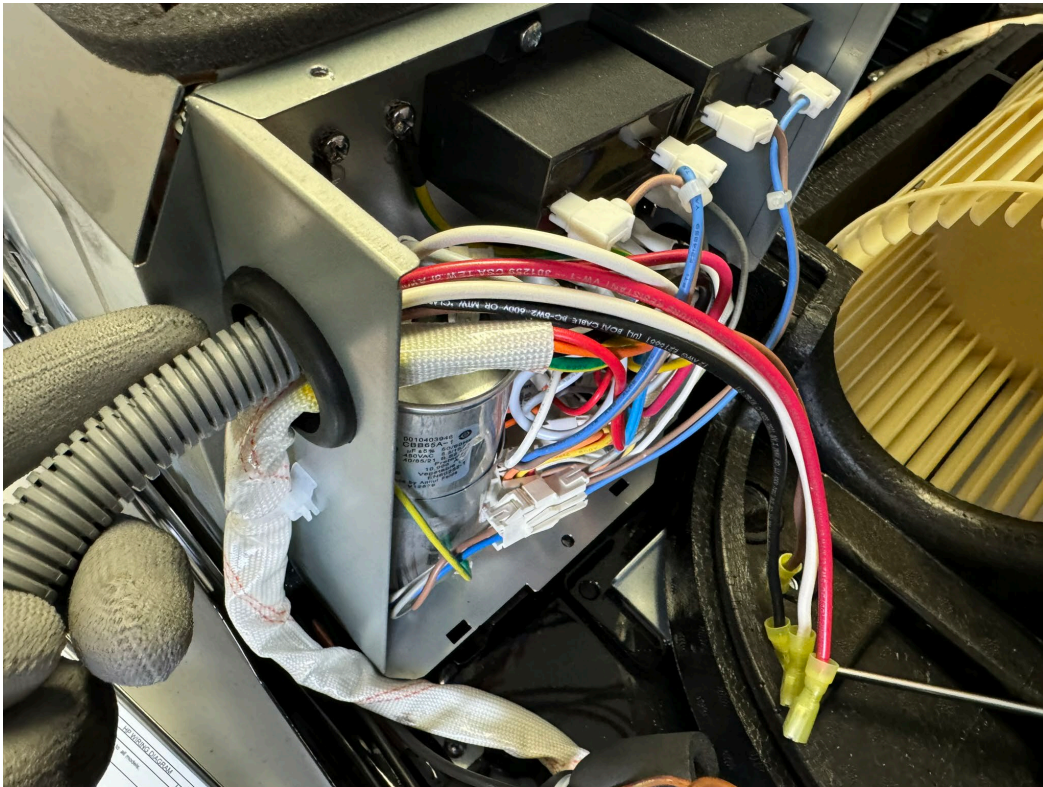
1. Connect WHITE wire (just removed from connection to BROWN wire) directly to capacitor
2. Make sure the locking spade is secure with a gentle tug
3. Reinstall the white sheath over the locking connector



**For use by qualified service technicians only**  
**Follow all applicable safety procedures while performing the ICM soft start removal**

# Remove Soft Start

Remove the 4 wires and loom from the electrical box and through the grommet on the side while being careful to leave the grommet in position



**For use by qualified service technicians only**  
**Follow all applicable safety procedures while performing the ICM soft start removal**

# Remove Soft Start

1. Remove the 2 to 4 7mm (or 9/32") nuts on the soft start from the electrical box cover
2. Discard soft start and nuts

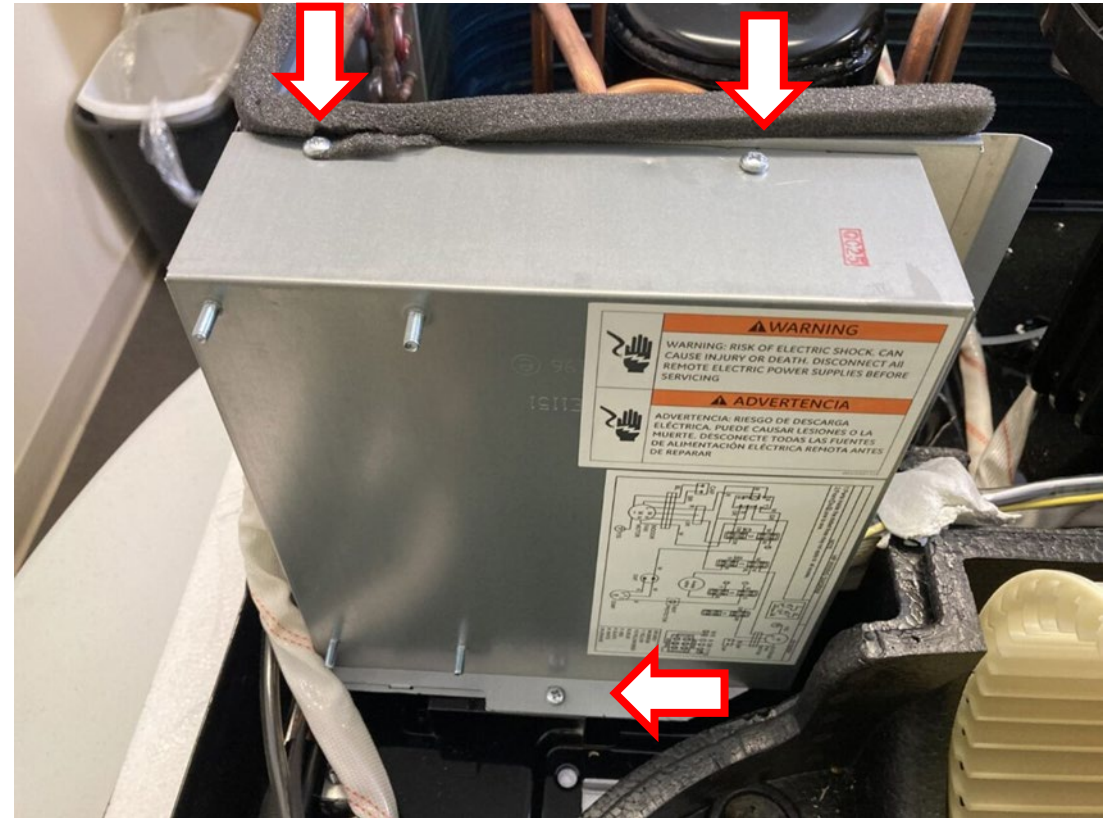
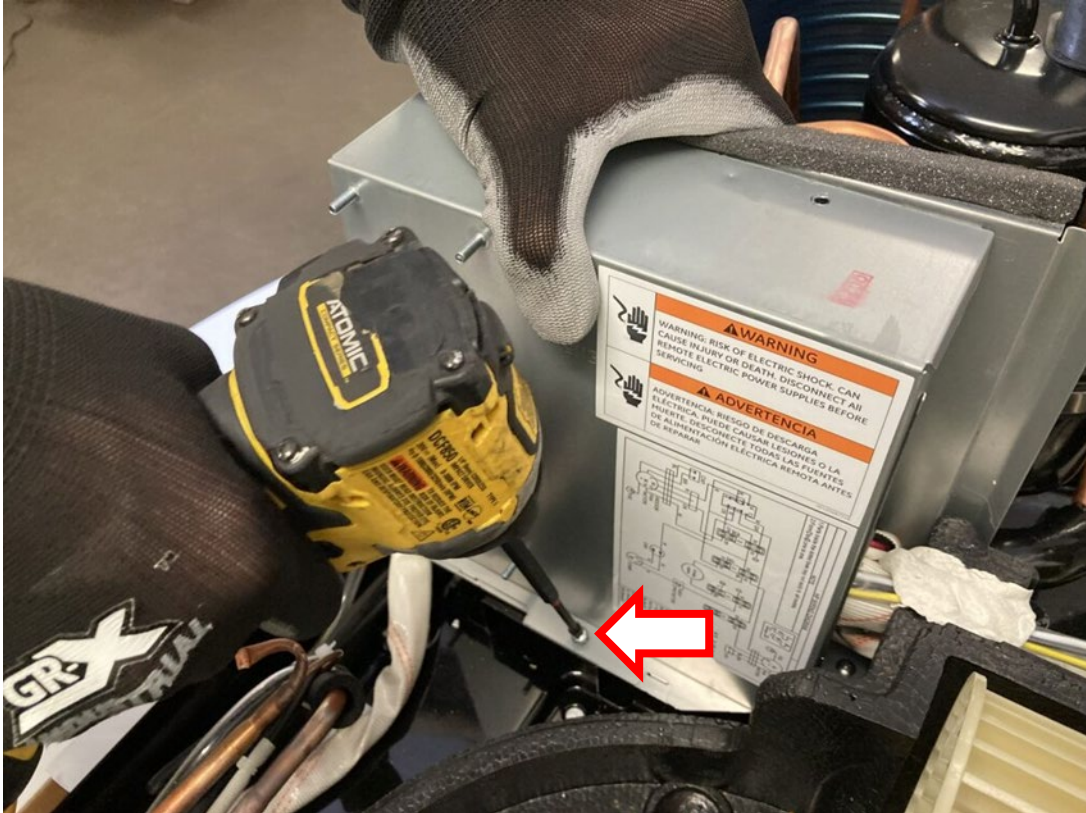


**For use by qualified service technicians only**  
**Follow all applicable safety procedures while performing the ICM soft start removal**



# Control Box Cover Installation

Reinstall the 3 Phillips-head Screws



**For use by qualified service technicians only**  
**Follow all applicable safety procedures while performing the ICM soft start removal**

# Install EPP Foam

Align the EPP foam cover with the base and replace  
Inspect cover from all sides to confirm proper alignment



**For use by qualified service technicians only**  
**Follow all applicable safety procedures while performing the ICM soft start removal**

# Install Shroud Cover



Reinstall the top shroud.  
Attach screws to the base.



**GE APPLIANCES**  
*a Haier company*

# ICM Soft Start Removal Instruction

**ARC – ARH models**

October 2024

*Rev 1*



**For use by qualified service technicians only**  
**Follow all applicable safety procedures while performing the ICM soft start removal**

# ROOFTOP RV AC MODEL NUMBERS

This procedure applies to the following model numbers with ICM Controls ICM870-16A-BH5400 “soft start” modules installed:

ARC13MACB	ARC13MACW
ARC13MHCB	ARC13MHCW
ARC15MACB	ARC15MACW
ARH13MHCB	ARH13MHCW
ARH15MACB	ARH15MACW

# Safety Warning/Hazard

## **This procedure is intended to be performed by a qualified servicer!**

The equipment involved in this procedure retains and/or conducts electrical current and poses a risk of electric shock. All applicable safety procedures should be followed, including (but not necessarily limited to) taking all steps to disconnect all power (115V AC and 12VDC to the air conditioner:

- Set the RV's 12V main electrical disconnect to "Off."
- Set the generator and the inverter to "Off."
- Unplug and stow away the shore connection.
- Set the RV's main breaker set to "Off."
- Use a multimeter to verify that all power to the unit is off and that it is safe to proceed.
- Wear proper protective equipment to protect from cut hazards and eye injury.
- Wear/utilize proper fall protection when on the roof of the RV.



**Cut Resistant  
Gloves**



**Composite  
Boots**



**Safety  
Glasses**



# Applicable Safety Equipment



**Cut – Resistant  
Sleeve**



**Electrically  
Rated Gloves**



**Fall Protection**

**For use by qualified service technicians only  
Follow all applicable safety procedures while performing the ICM soft start removal**

# Tools Needed

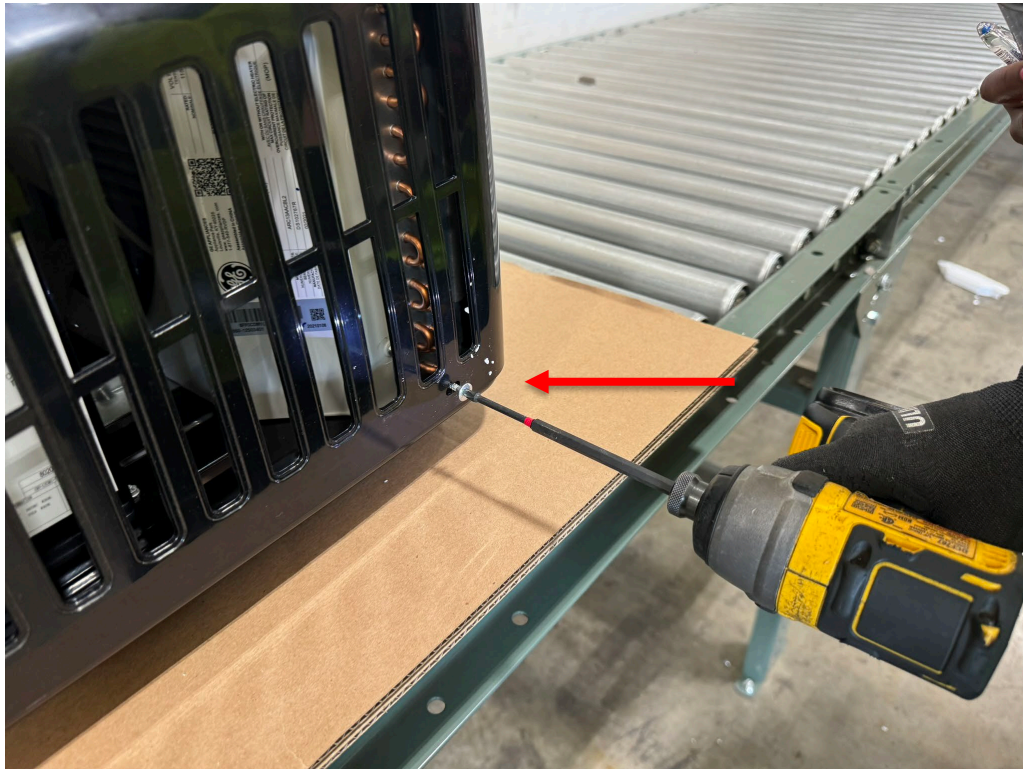
- #2 Phillips Head Screwdriver/bit
- 1/4" Nut Driver/Bit
- Needle Nose Pliers



**For use by qualified service technicians only**  
**Follow all applicable safety procedures while performing the ICM soft start removal**

# Shroud Removal

Remove 4-5 outer screws



Lift Shroud



Note: Retain shroud screws for reinstallation

**For use by qualified service technicians only**  
**Follow all applicable safety procedures while performing the ICM soft start removal**

# EPP Foam Cover Removal

Lift EPP top foam from the bottom to separate



Note: Retain EPP foam for reinstallation

**For use by qualified service technicians only**  
**Follow all applicable safety procedures while performing the ICM soft start removal**

# Soft Start Detachment

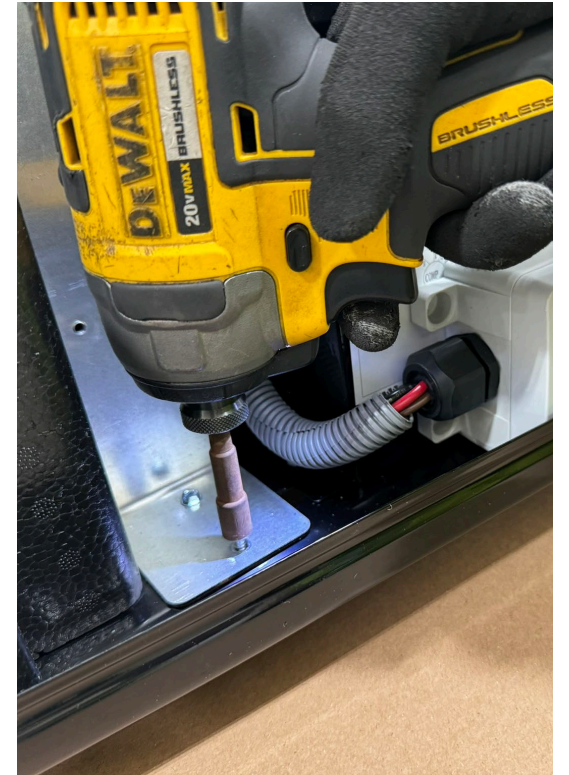
Step 1: Remove 2-4 screws retaining soft start using 1/4" nut driver



Step 2: Lay soft start side down



Step 3: Remove soft start bracket



**For use by qualified service technicians only  
Follow all applicable safety procedures while performing the ICM soft start removal**

# Electrical Box Cover Removal

Step 1: Remove 4 Phillips-head screws



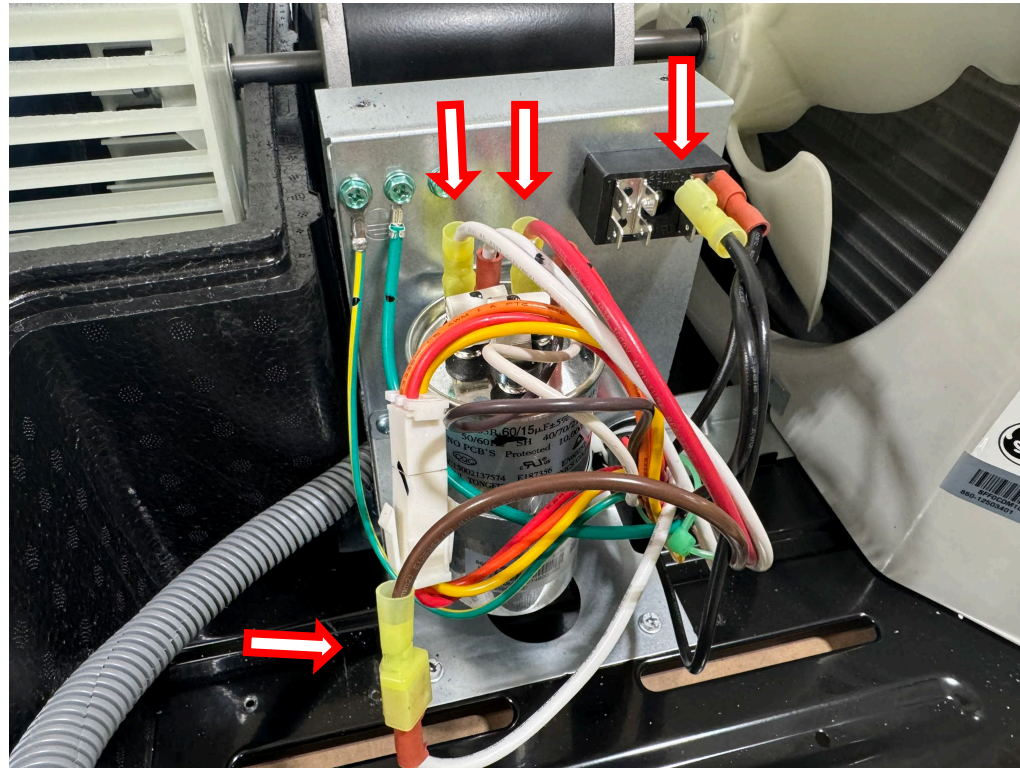
Step 2: Lift the cover up away from electrical box



**For use by qualified service technicians only**  
**Follow all applicable safety procedures while performing the ICM soft start removal**

# Wire Disconnect to Remove Soft Start

There are 4 wires connected to the soft start (white, red, black and brown) that must all be removed



**For use by qualified service technicians only**  
**Follow all applicable safety procedures while performing the ICM soft start removal**

# Wire Disconnect to Remove Soft Start

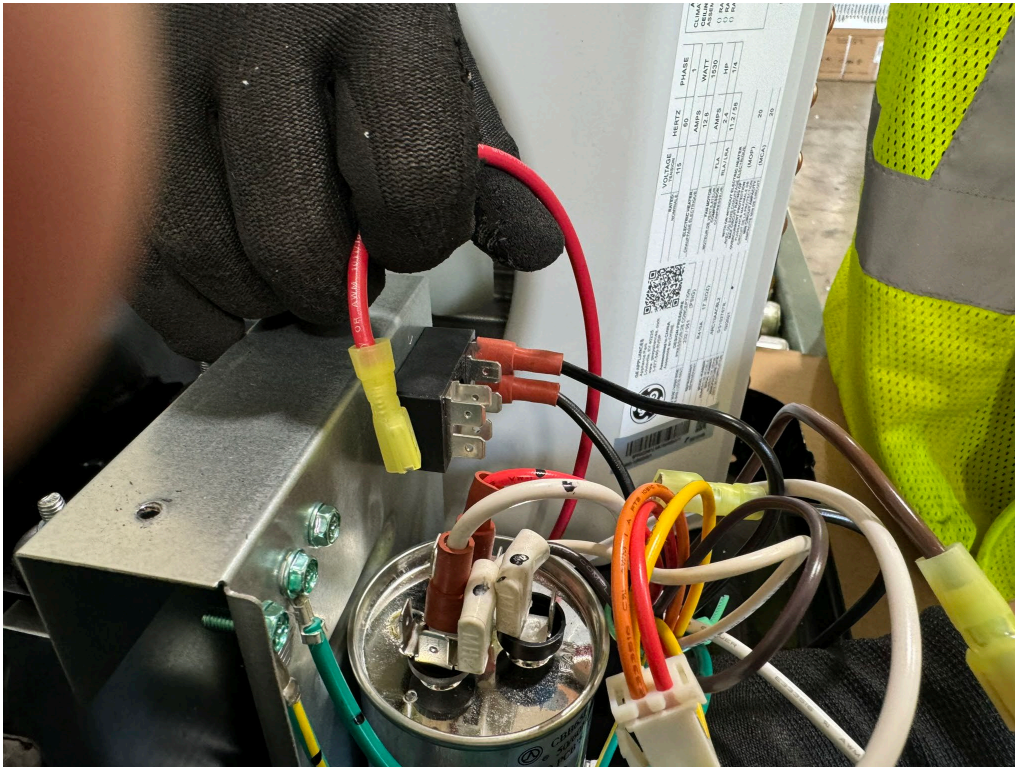
Step 1: Remove soft start's BLACK wire at the terminal



**For use by qualified service technicians only**  
**Follow all applicable safety procedures while performing the ICM soft start removal**

# Wire Disconnect to Remove Soft Start

Step 2: Remove soft start's RED wire at capacitor



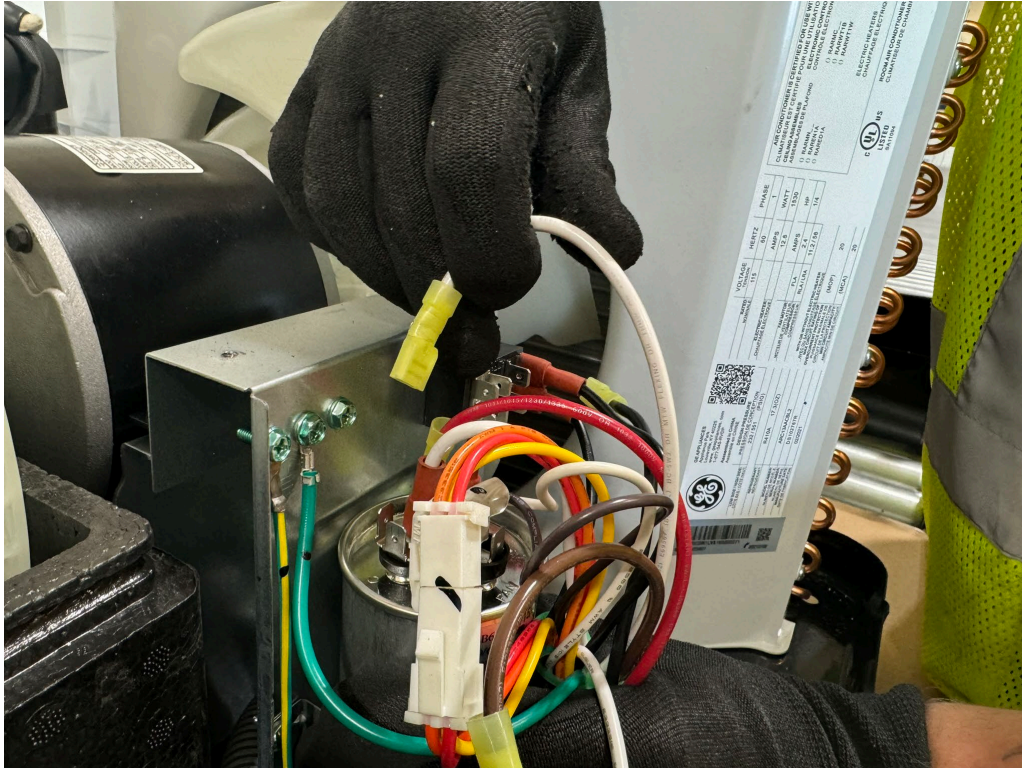
Do NOT remove the other RED wire connected to the AC



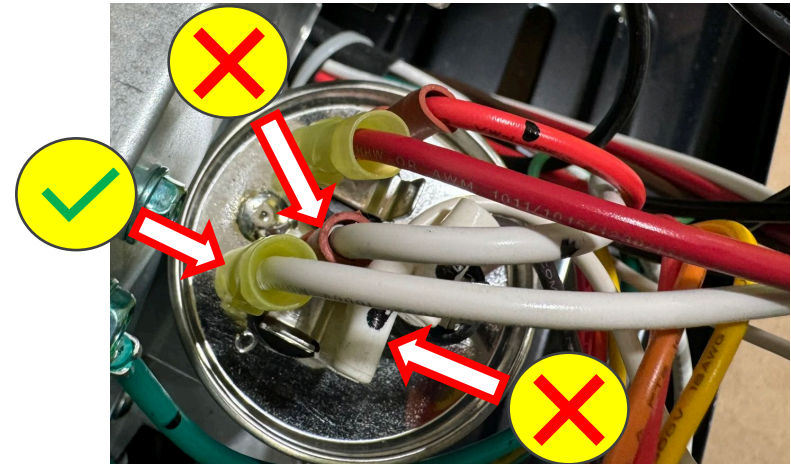
**For use by qualified service technicians only**  
**Follow all applicable safety procedures while performing the ICM soft start removal**

# Wire Disconnect to Remove Soft Start

Step 3: Remove soft start's WHITE wire at Capacitor



Do NOT remove the other 2 WHITE wires connected to the AC

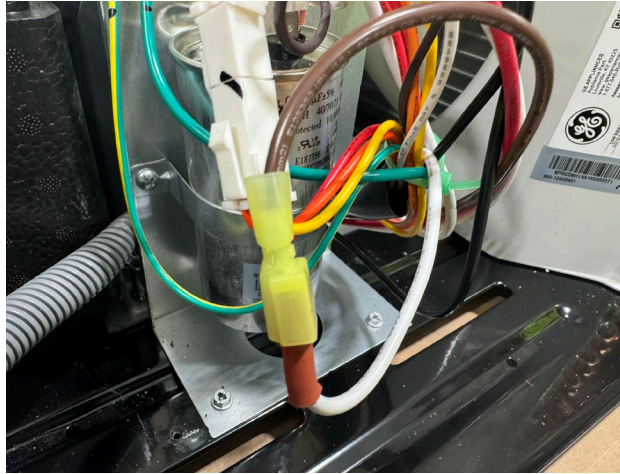


# Wire Disconnect to Remove Soft Start

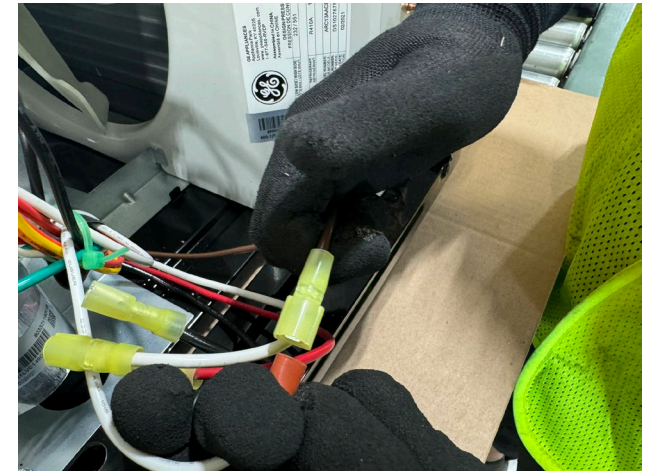
## Step 4:

1. Locate the BROWN wire of the soft start connected to a WHITE wire.
2. Pull the 2 connectors apart
3. Route wires from behind the electrical box
4. Remove soft start completely from the AC unit

1.



2.



3.

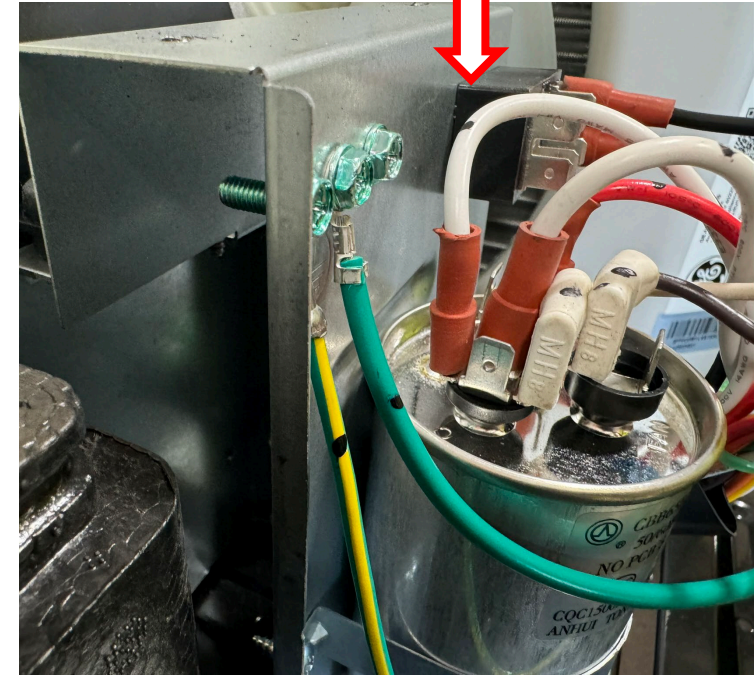
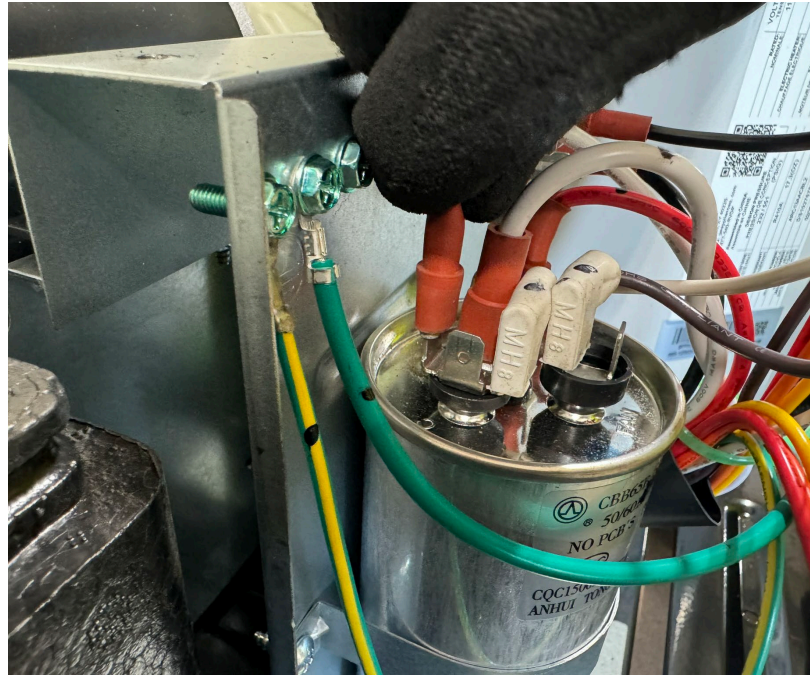
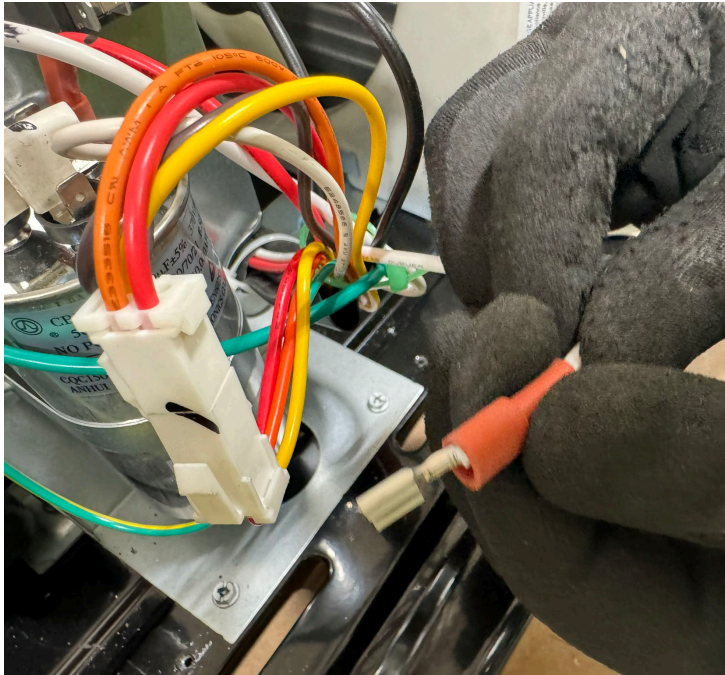


4.



# Reconnect Neutral Wire

1. Connect WHITE wire (removed from connector to BROWN wire) to capacitor
2. Make sure the locking spade is secure with a gentle tug
3. Reinstall the white sheath over the locking connector

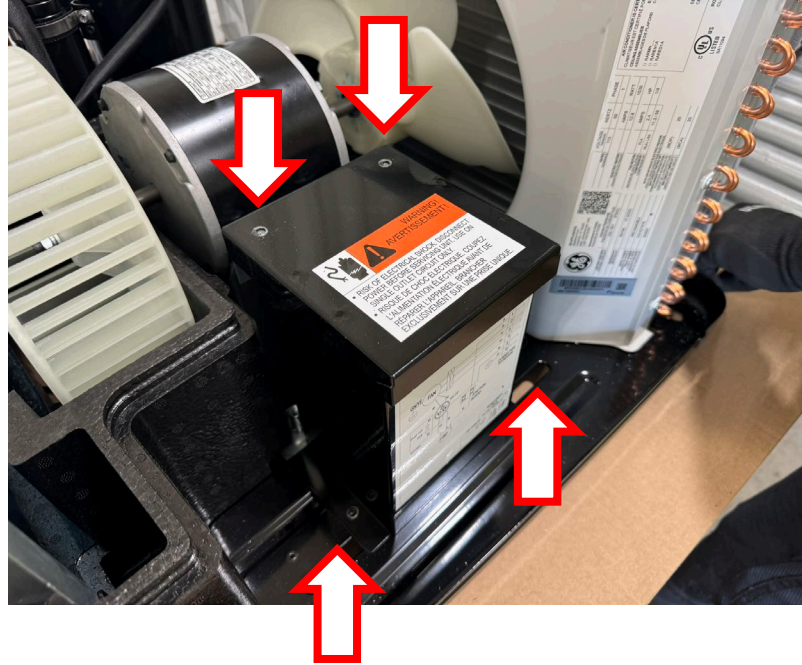
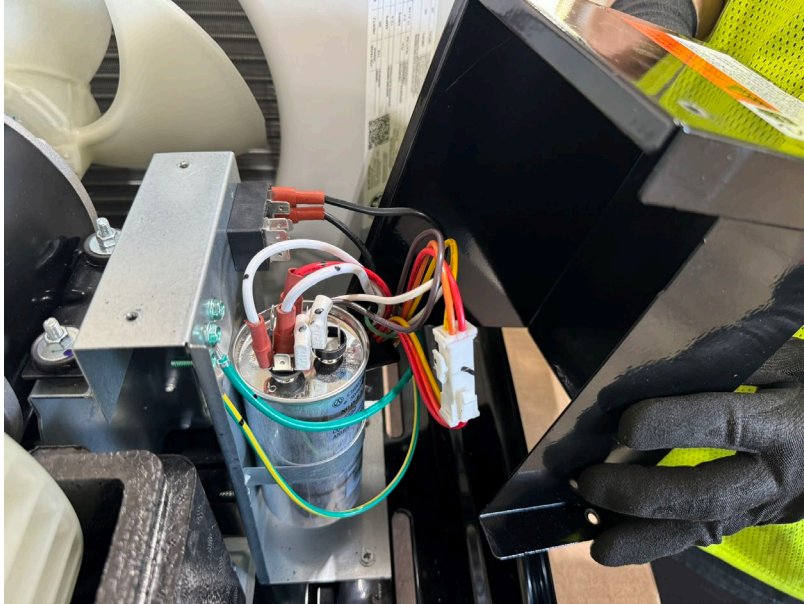


**For use by qualified service technicians only**  
**Follow all applicable safety procedures while performing the ICM soft start removal**

# Control Box Cover Installation

Set cover back in place while ensuring the wires are tucked inside the control box properly and that the screw holes are aligned.

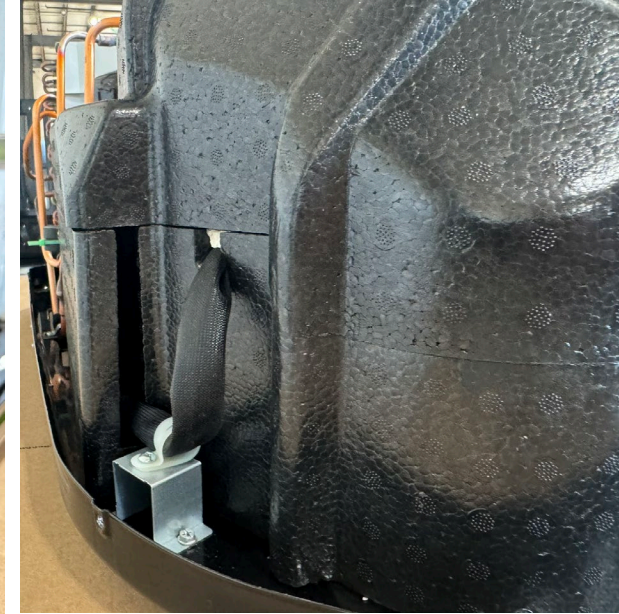
Reinstall the 4 Phillip-head screws.



**For use by qualified service technicians only**  
**Follow all applicable safety procedures while performing the ICM soft start removal**

# Install EPP Foam

Align the EPP Foam cover with the base and replace  
Inspect cover from all sides to confirm proper alignment



**For use by qualified service technicians only**  
**Follow all applicable safety procedures while performing the ICM soft start removal**

# Install Shroud Cover

Reinstall the top shroud.



Attach 4 screws to the base.



**For use by qualified service technicians only**  
**Follow all applicable safety procedures while performing the ICM soft start removal**