

**TECHNICAL INSTRUCTIONS**

**FOR**

**SAFETY RECALL CAMPAIGN 24TA12**

**POTENTIAL SUDDEN LOSS OF TIRE PRESSURE**

**CERTAIN 2024 TUNDRA & CERTAIN 2024 SEQUOIA HV VEHICLES**

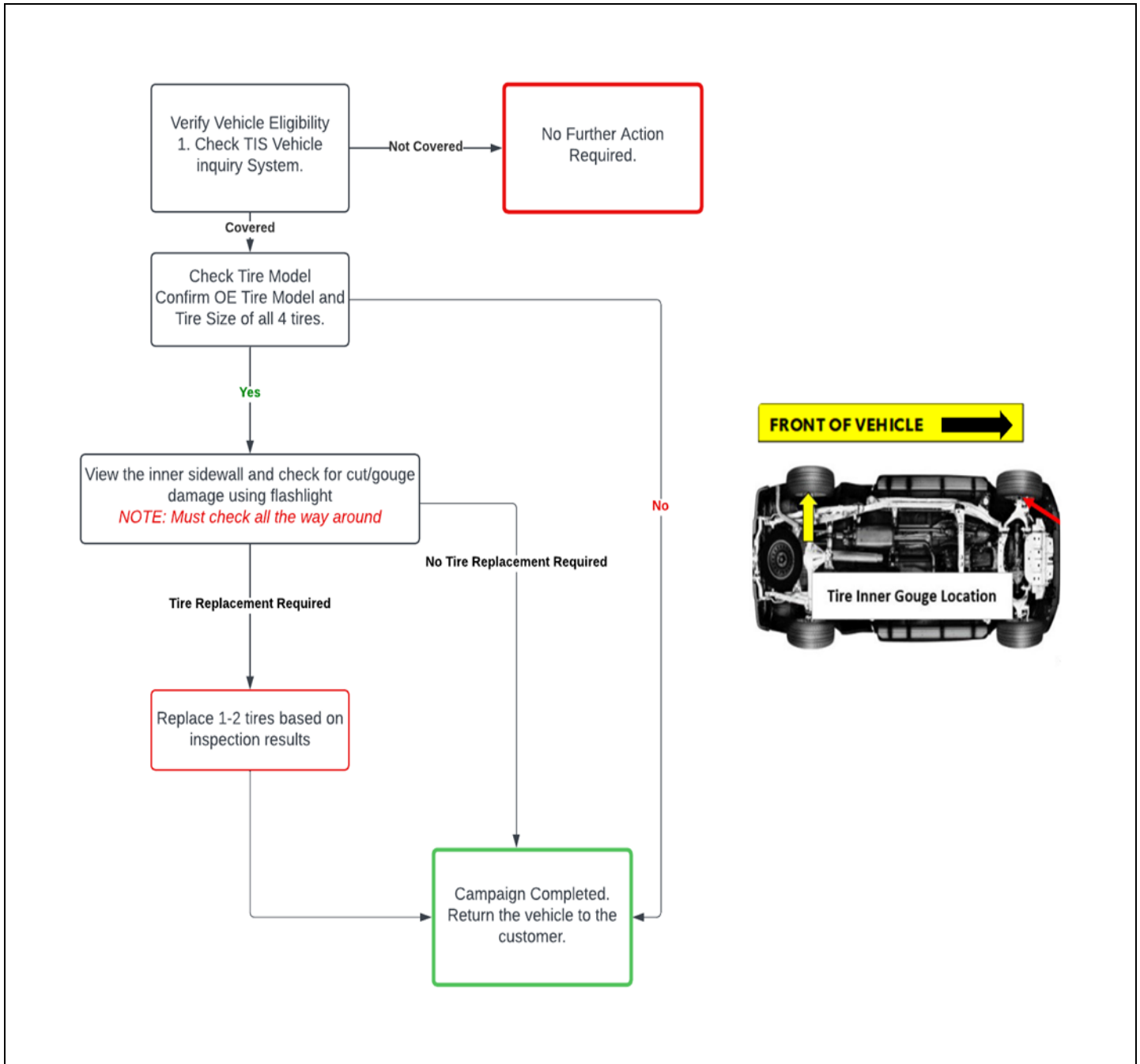
**Technician Training Requirements**

The repair quality of covered vehicles is extremely important to Toyota. All dealership technicians performing this repair are required to successfully complete the most current version of the E-Learning course "Safety Recall and Service Campaign Essentials". To ensure that all vehicles have the repair performed correctly; technicians performing this repair are required to have currently completed the following courses:

- **T4535 - Steering, Suspension & Handling**

Always check which technicians can perform the repair by logging on to <https://www.uotdealerreports.com>. It is the dealership's responsibility to select technicians with the above certification level or greater to perform this repair. Carefully review your resources, the technician skill level, and ability before assigning technicians to this repair. It is important to consider technician days off and vacation schedules to ensure there are properly trained technicians available to always perform this repair.

## I. OPERATION FLOW CHART



## II. IDENTIFICATION OF AFFECTED VEHICLES

### 1. CHECK VEHICLE FOR CAMPAIGN ELIGIBILITY

- Compare the vehicle's VIN to those listed on the Repair Order to ensure they match.
- Check the TIS Vehicle Inquiry System to confirm that the VIN is involved in this Campaign and that it has not already been completed.

**NOTE:** TMNA warranty will not reimburse dealers for repairs completed on vehicles that are not affected or were previously completed, even by another dealer.

### III. PREPARATION

#### A. PARTS

Tire Brand	Tire Model	Size
Yokohama	Geolander X-CV	245/75/18
Bridgestone	Dueller H/T	265/50/22
Yokohama	Geolander X-CV	265/60/20
Bridgestone	Dueller H/T	265/60/20
Falken	Wildpeak A/T	265/60/20
Yokohama	Geolander X-CV	265/70/18
Bridgestone	Dueller H/T	265/70/18
Michelin	LTX Trail	265/70/18
Falken	Wildpeak A/T	285/65/18

**NOTE:** If "NG" tire is determined, please order appropriate tire through your local tire ordering system.

#### B. TOOLS & EQUIPMENT

• GTS+	• Paint Marker	• Flashlight / Shop Light
• Mirror		

#### C. MATERIALS

• Protective Gloves	• Protective Glasses	• Protective headwear
---------------------	----------------------	-----------------------

### IV. BACKGROUND

The interior sidewall of the passenger-side front and rear tires may have been damaged during vehicle assembly with the subject vehicles. If structural damage has occurred, the tire(s) may suddenly lose air pressure while driving, which could result in a loss of vehicle control, increasing the risk of a crash. The suspected tires would have been on the vehicle's passenger side, but due to potential tire rotations that may have occurred during routine service, we are inspecting all tires.

## V. WORK PROCEDURE

**NOTE: This Safety Recall covers only the subject vehicles if they are equipped with original/factory tires, as detailed in these instructions. It does not cover the diagnosis or replacement of any other aftermarket tires that may have been installed on the vehicle.**

### 1. CONFIRM TIRES ON VEHICLE ARE ORIGINAL/FACTORY

- a. Confirm tires on the vehicle are original/factory. The original/factory tires are listed below:

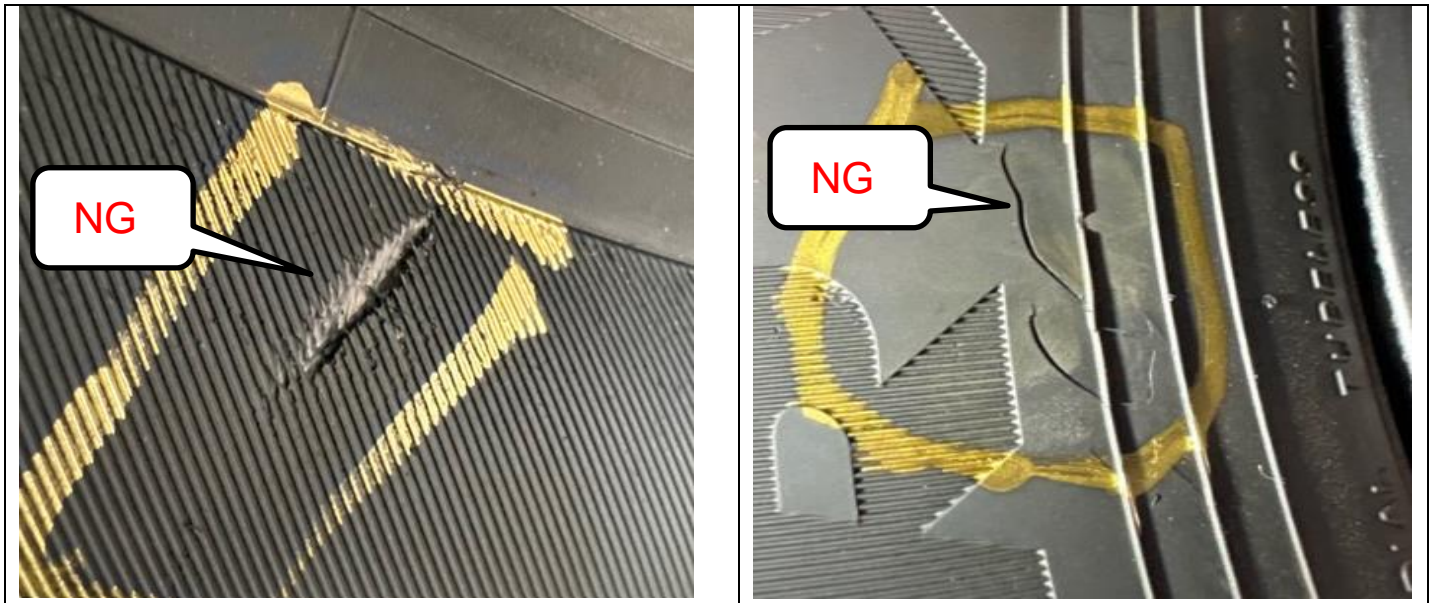
Tire Brand	Tire Model	Size
Yokohama	Geolander X-CV	245/75/18
Bridgestone	Dueler H/T	265/50/22
Yokohama	Geolander X-CV	265/60/20
Bridgestone	Dueler H/T	265/60/20
Falken	Wildpeak A/T	265/60/20
Yokohama	Geolander X-CV	265/70/18
Bridgestone	Dueler H/T	265/70/18
Michelin	LTX Trail	265/70/18
Falken	Wildpeak A/T	285/65/18

### 2. INSPECT TIRE DAMAGE

- a. From the underside of the vehicle, view the inner sidewall and check for cut/gouge damage using a flashlight.  
b. Review the examples below to identify “NG” tire condition.

**NOTE: You must check the entire circumference of the inside tire wall.**





## VI. NG TIRE REPLACEMENT

### 1. REPLACE TIRES ACCORDING TO THE INSPECTION RESULTS

a. Refer to TIS for instructions: SUSPENSION: TIRE AND WHEEL: INSTALLATION:

- [Sequoia HV](#) –  
Wheel Lug Nut Torque:131 N·m {1336 kgf·cm, 97 ft·lbf}  
TPS Initialization - [RM1000000024OPN](#)
- [Tundra](#)  
Wheel Lug Nut Torque:131 N·m {1336 kgf·cm, 97 ft·lbf}  
TPS Initialization - [RM1000000024OPP](#)

### ◀ VERIFY REPAIR QUALITY ▶

- Confirm that tires are replaced and mounted correctly (if required).
- Confirm wheels are reinstalled correctly and torqued properly (if required)

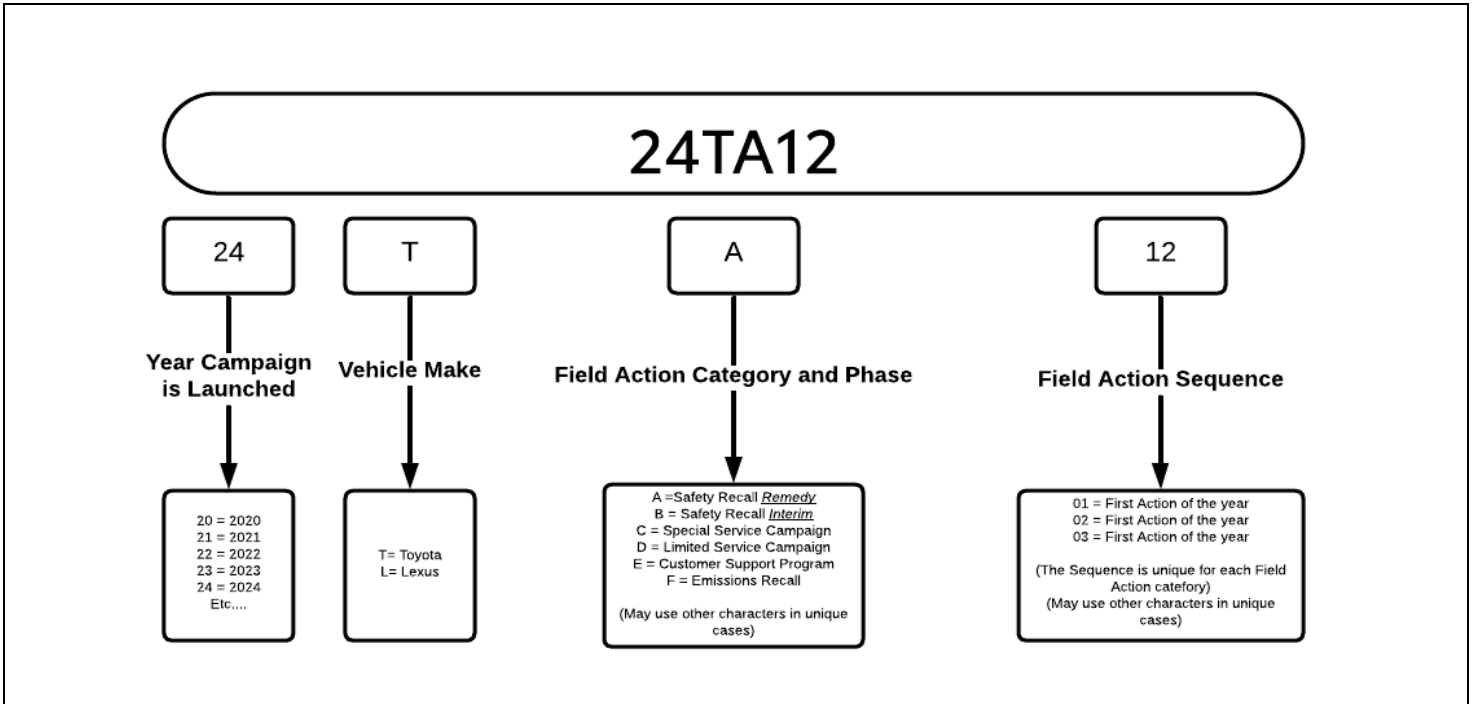
If you have any questions regarding this update, please contact your regional representative.

## VII. APPENDIX

### A. PARTS DISPOSAL

In accordance with Federal law, please make sure all recalled parts (original parts) removed from the vehicle are disposed of in a manner in which they will not be reused, ***unless requested for parts recovery return.***

**B. CAMPAIGN DESIGNATION DECORDER**



**Examples:**

- 19TA01 = Launched in 2019, Toyota, Safety Recall Remedy Phase, 1<sup>st</sup> Safety Recall Launched in 2019**
- 20TC02 = Launched in 2020, Special Service Campaign, 2<sup>nd</sup> Special Service Campaign Launched in 2020**
- 21TE05 = Launched in 2021, Customer Support Program, 5<sup>th</sup> Customer Support Program Launched in 2021**