

## Safety Recall: 2023–25 Integra Steering Gear Repair

Supersedes 24-054 dated October 18, 2024, to revise the information highlighted in **yellow**.

### AFFECTED VEHICLES

| Year    | Model                         | Trim Level | VIN Range                                |
|---------|-------------------------------|------------|--|
| 2023–25 | Integra<br>(Including Type S) | ALL        | Check the iN VIN status for eligibility. |

### REVISION SUMMARY

Information was added to the Corrective Action, Warranty Claim Information and Repair Procedure sections.

### BACKGROUND

Due to an improperly produced steering gearbox worm wheel, the wheel can swell during use, reducing the grease film thickness between the worm wheel and worm gear. In addition, the worm gear spring preload was set improperly high, increasing the sliding force between the components. As a result of the reduced grease film thickness and increased sliding force, friction between the worm wheel and worm gear increases.

Increased friction between the worm gear and worm wheel can increase steering effort and difficulty, increasing the risk of a crash or injury.

### CLIENT NOTIFICATION

Owners of affected vehicles will be sent a notification of this safety recall.

Do an iN VIN status inquiry to verify eligibility.

Some vehicles affected by this campaign may be in your new or used vehicle inventory.

Failure to repair a vehicle subject to a recall or campaign may subject your dealership to claims or lawsuits from the client or anyone else harmed as a result of such failure. To see if a vehicle in inventory is affected by this safety recall, do a VIN status inquiry before selling it.

### CORRECTIVE ACTION

Replace the end cap, spring, and spring seat in the EPS gearbox assembly and inject grease into the EPS gearbox.

**NOTE:** Due to the limited supply of Gearbox Assembly Steering Kits (P/N: 06531-T20-305) used in the current repair method, dealers are authorized to do the previous repair method (steering gearbox removal and grease packing) if sufficient parts (P/N: 06530-T20-305 + Nuts/Bolts) are **available in dealer inventory**.

Refer to the Parts Information section of the previous version ([Version 2 – Click Here](#)) to confirm.

**CLIENT INFORMATION:** The information in this bulletin is intended for use only by skilled technicians who have the proper tools, equipment, and training to correctly and safely maintain your vehicle. These procedures should not be attempted by “do-it-yourselfers,” and you should not assume this bulletin applies to your vehicle, or that your vehicle has the condition described. To determine whether this information applies, contact an authorized Acura automobile dealer.

## WARRANTY CLAIM INFORMATION

| Operation Number | Description  | Flat Rate Time | Defect Code | Symptom Code | Template ID | Failed Part Number |
|------------------|--|----------------|-------------|--------------|-------------|--------------------|
| 5130A5           | <b>Except Type S:</b><br>Replace the spring seat, spring, and end cap in the EPS gearbox and inject grease to the worm gear. | 0.6 hr         | 6JP00       | VJV00        | B24054C     | 53620-3S5-A04      |
| 5130A5           | <b>Type S:</b><br>Replace the spring seat, spring, and end cap in the EPS gearbox and inject grease to the worm gear.        | 0.6 hr         | 6JP00       | VJV00        | B24054D     | 53620-31M-A03      |

Skill Level: Repair Technician

NOTE: If the repair was completed using the previous method (steering gearbox removal and grease packing) and P/N 06530-T20-305 (Gearbox Assembly Steering Kit), use the Warranty Claim Information listed under Version 2 of this service bulletin. Click on the links available on either the Corrective Action or Repair Procedure section to access Version 2.

## PARTS INFORMATION

Due to limited supply, parts will be automatically allocated to your dealership based on availability.

| Part Name                     | Part Number   | Quantity |
|-------------------------------|---------------|----------|
| Gearbox Assembly Steering Kit | 06531-T20-305 | 1        |

NOTE: Some kits may include an O-ring. Discard the O-ring as it is not used in this repair.

## REQUIRED MATERIALS

| Part Name    | Part Number | Quantity               |
|--------------|-------------|------------------------|
| Hondabond HT | 08718-0004  | 1 tube for 50 vehicles |

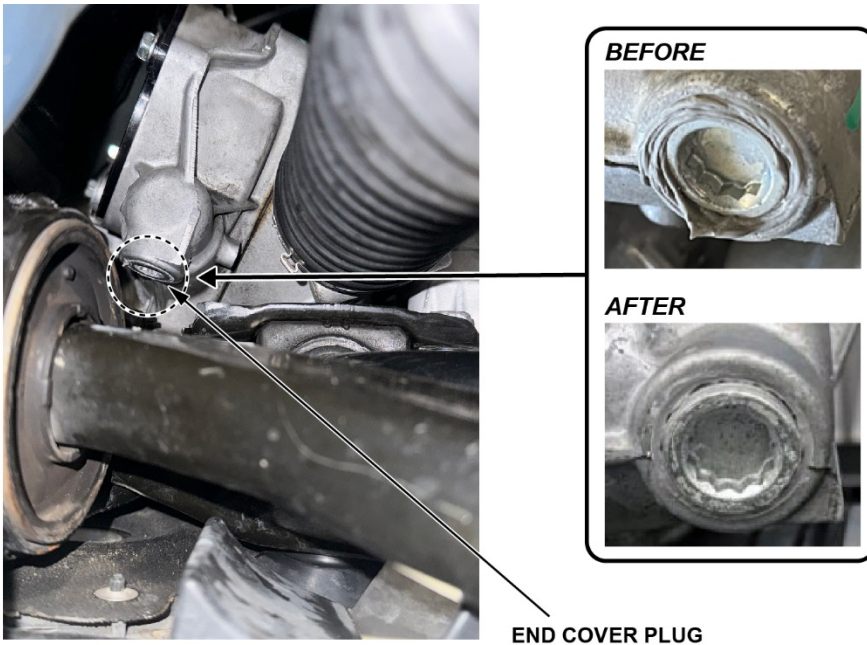
## TOOL INFORMATION

| Tool Name            | Tool Number   | Quantity |
|----------------------|---------------|----------|
| EPS Plug Wrench      | 07AAA-T20A100 | 1        |
| EPS Plug Thumb Wheel | 07AAZ-T20A200 | 1        |
| Spring/Plug Holder   | 07AAB-T20A100 | 1        |

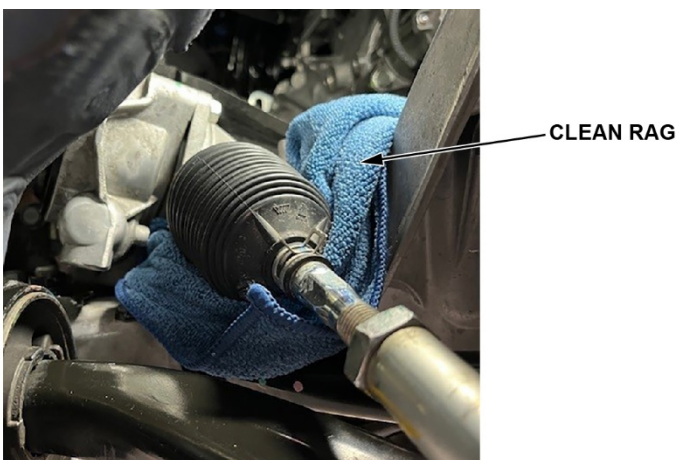
## REPAIR PROCEDURE

**NOTE:** If you are doing the repair using the previous method (steering gearbox removal and grease packing) and using P/N 06530-T20-305 (Gearbox Assembly Steering Kit), refer to [\(Version 2 – Click Here\)](#).

1. Lift the vehicle so all four wheels are off the ground.
  - [Lift and Support Points](#)
2. Remove the right front wheel.
3. Turn the steering wheel all the way to the right.
4. Lift the vehicle fully.
5. Remove the engine undercover.
  - Except Type S [\(Click Here\)](#)
  - Type S [\(Click Here\)](#)
6. Using a wire brush, clear the area around the end cover plug. Use a rag with brake cleaner to wipe away any residual loose material, then blow off the area with compressed air.



7. Insert a clean rag between the steering gearbox and the subframe. This is to keep tools and/or parts from falling into this area.



- Click here to view the repair process video:

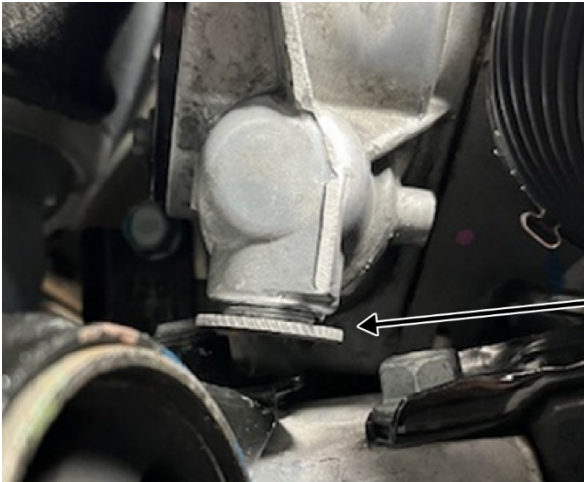
▶ PLAY VIDEO

8. Use the EPS plug wrench to break loose the EPS end cover plug.  
NOTE: The spring and spring seat may fall out during the end cap removal process.



EPS PLUG  
WRENCH

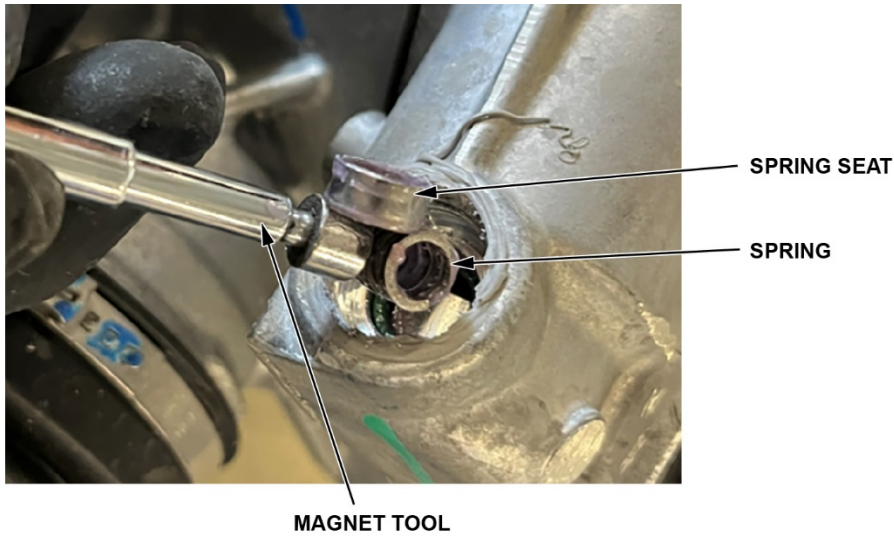
9. Then use the EPS plug thumb wheel to remove the EPS end cover plug.



EPS PLUG  
THUMB WHEEL

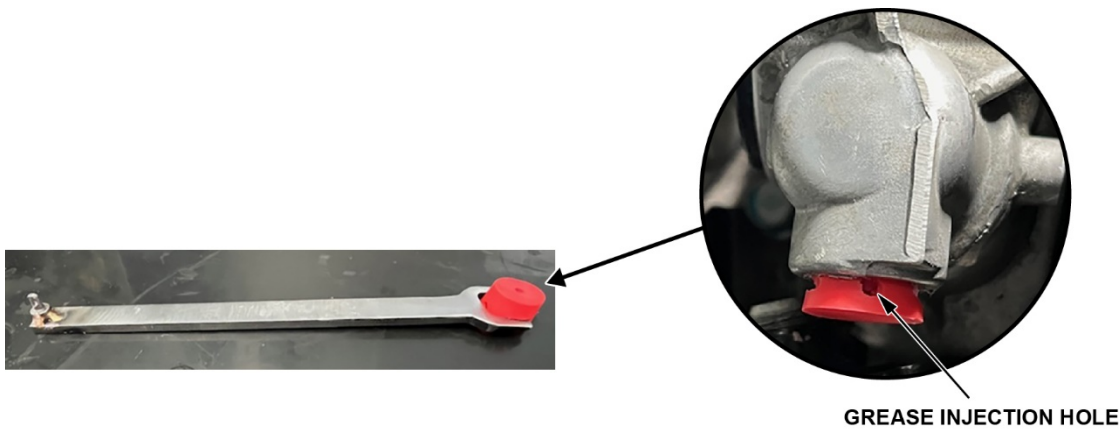
10. Use a magnet tool to remove the spring and spring seat, and discard.

Note: Remove any remaining sealant from the end cap area being careful not to get any debris inside the gearbox.



11. Insert the grease plug into the steering gearbox until it is firmly seated.

NOTE: The grease injection hole in the side of the plug should face outward.



12. Open the tube of grease and squeeze the entire contents into the empty syringe, then insert the plunger.

NOTE: There should be a minimum of 15ml of grease in the syringe.



13. While holding the syringe, depress the plunger to squeeze a small amount of grease (approximately the size of a dime) onto a clean piece of paper for use in step 17.

**NOTE:**

- **Protect the grease** from contamination.
- **Maintain a minimum of 15ml** of grease in the syringe.

14. Insert the grease filled syringe into the grease plug and slowly inject the grease.

TIP: It may be necessary, apply pressure to the grease injection plug to keep it seated while injecting the grease.



15. Remove the syringe and the grease plug from the steering gearbox.

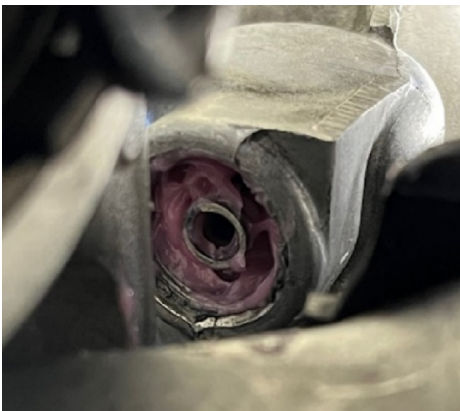
16. Wipe away any grease from the threads of the EPS gearbox.

17. Using the spring/plug holder, install the **NEW** EPS spring and seat.

NOTE: Apply additional grease, saved in step 13, around the outside of the spring and spring seat to help hold them when inserted into the steering gearbox.



18. Confirm the spring is correctly oriented in the steering gearbox.



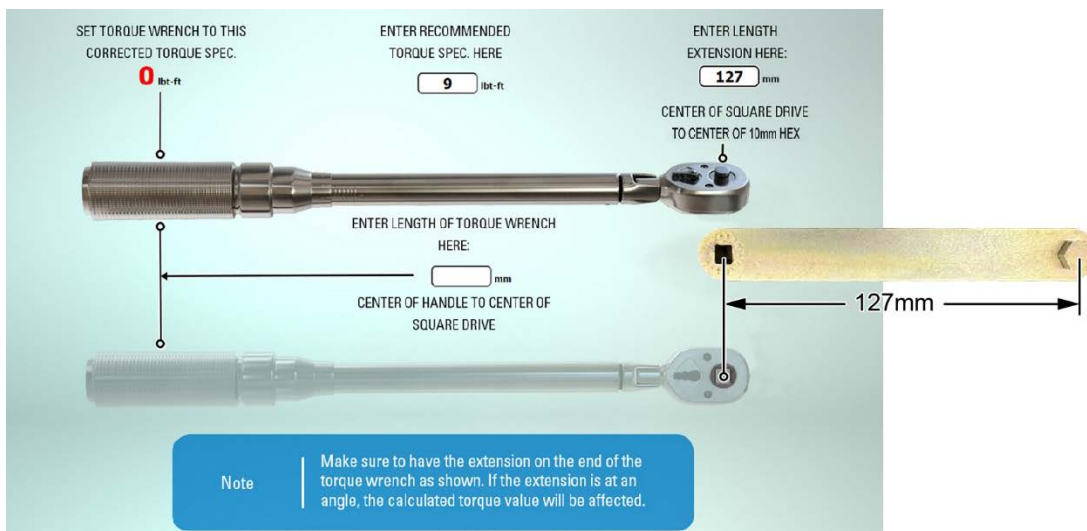
19. Apply a thin coat of Hondabond to the **NEW** EPS end cover plug threads and use the EPS plug thumb wheel to install.



20. Torque the end cover plug to **12 N·m (9 lb-ft)** using the EPS plug wrench.

Important: When using special tools that extend beyond the torque wrench, the torque value changes due to the added leverage. The actual torque applied will be greater than the torque reading shown.

To compensate for this additional leverage, use the *Interactive Job Aid: Torque Wrench Extension Calculator* in Service Information to calculate the torque value reading on the torque wrench.



21. Remove the rag from between the steering gearbox and subframe.

22. Install the right front wheel and torque to specification:

- Except Type S - **108 N·m (80 lb-ft)**.
- Type S - **127 N·m (94 lb-ft)**.

23. With the vehicle on the ground, turn the steering wheel full left, then full right to ensure smooth operation.