

REFERENCE:	Nova Bus Manuals
SECTION:	16: Electrical System
RS N°:	MQR 7621-2843
EFFECTIVE IN PROD.:	N/A
TC RECALL N°:	2024-572
NHTSA RECALL N°:	24V-727

APPLICATION DEADLINES: N/A
CLAIM REFERENCE NUMBER: SR5643

SUBJECT:	High Voltage System
JUSTIFICATION:	Possible intermittent shutdown of the MC43 which could cause the vehicle control unit to fail. This would disable the high voltage and the vehicle would lose its motive power increasing the risk of a crash.

LEVEL	DESCRIPTION	DIRECT CHARGES		TIME
		LABOUR	MATERIAL	
1	Update the MC43 software to the latest revision.	Nova Bus	–	20 min
2	–	–	–	–

MATERIAL REQUIRED PER VEHICLE

QTY	PART N°	REV.	DESCRIPTION
LEVEL 1			
–	–	–	–
LEVEL 2			
–	–	–	–

DISPOSAL OF PARTS

REMOVED PARTS ARE:	DISCARDED	RETAINED
	–	–

REVISION HISTORY

REV.	DATE	CHANGE DESCRIPTION	WRITTEN BY
NR	2024NO01	Initial release	Annie St-Jacques

APPROVED BY:

Danna Dupuis Signature numérique de Danna Dupuis
Date : 2024.11.01 15:28:57 -04'00'

PAGE 1 OF 8

CLIENT	ORDER	ROAD NUMBER		VIN (2NVY/4RKY...)		QTY
		FROM	TO	FROM	TO	
Ames Iowa - Transit Agency	LE52	7157	7158			2
CMBC - Translink	LE13	H22101				1
CMBC - Translink	LE14	H23202	H23212			11
Durham Region Transit Ontario	LF55	6130	6131			2
Durham Region Transit Ontario	LF55	6135				1
Grand River Transit Ontario - GRT	LE71	22301	22302			2
Grand River Transit Ontario - GRT	LF56	22307	22311			5
Guelph Ontario	LE69	285	288			4
Halifax Nova Scotia	LF31	2001				1
Halifax Nova Scotia	LF31	2003	2012			10
Halifax Nova Scotia	LF31	2016	2022			7
Halifax Nova Scotia	LF31	2024				1
Halifax Nova Scotia	LF31	2027				1
Halifax Nova Scotia	LF31	2029	2030			2
Halifax Nova Scotia	LF31	2035				1
Halifax Nova Scotia	LF31	2037				1
Halifax Nova Scotia	LF31	2039	2040			2
Halifax Nova Scotia	LF31	2053				1
Houston Texas - Metro	LE77	3000	3019			20
Milwaukee Wisconsin - MCTS	LE16	1000	1000			1
Milwaukee Wisconsin - MCTS	LE17	1001	1010			10
Milwaukee Wisconsin - MCTS	LF12	1011	1014			4
San Francisco Municipal Transportation Agency - SFMTA	LE39	5010	5010			1
San Francisco Municipal Transportation Agency - SFMTA	LE72	5011	5012			2
Saskatoon Saskatchewan	LF64	2410	2411			2



WARNING

Follow your internal safety procedures.



WARNING

NOTE THAT DESPITE THIS SOFTWARE UPDATE, THE PROPULSION DISABLE SWITCH DOES NOT ENSURE HIGH-VOLTAGE SAFETY AND IS NOT A SUBSTITUTE FOR DECOMMISSIONING AND LOCKING OUT THE VEHICLE.



Figure 1 - "Propulsion Disable" Switch, (For Reference Only, Your Configuration May Differ)

**NOTE**

Required materials:

- Laptop computer with the Parker software IQANrun6 installed.
- N43578-05 adapter cable, to connect to the vehicle.
- Kvaser USB-CAN interface cable, to connect between the N43578-05 cable and the laptop.

**NOTE**

For the latest IQ_GEN4E__00 program revision ("J" or higher), please contact your Nova Bus customer support representative.

**CAUTION**

To avoid a wrong boot up sequence, never disconnect and reconnect the MC43 module without having disconnected the power supply.

**NOTE**

If you have difficulties with the network connection, disconnect the Bendix module and the Parker display connectors.

PROCEDURE

- 1.1. Park the vehicle on an even surface with the transmission on neutral.
- 1.2. Apply the parking brake and set the master control switch to the **stop** position.
- 1.3. Connect the N43578-05 adapter cable to the connector located in the interior back panel (IB) (Figures 2 & 3). Connect the Kvaser USB-CAN interface cable via the N43578-05 J1939-250 port and the laptop.



Figure 2 - Locate the Connector (Image for Reference Only, Your Configuration May Differ)



Connect to the connector inside the IB panel (figure above)

J1939-250 port, connect to Kvaser

Figure 3 - Adapter N43578-05 and J1939-250 Port

- 1.4. Start the IQANrun6 Software.
- 1.5. If a password is requested, enter «dieselnova».
- 1.6. Choose the communication port "CAN", click on "Send", then on "Send Project" (Figure 4).

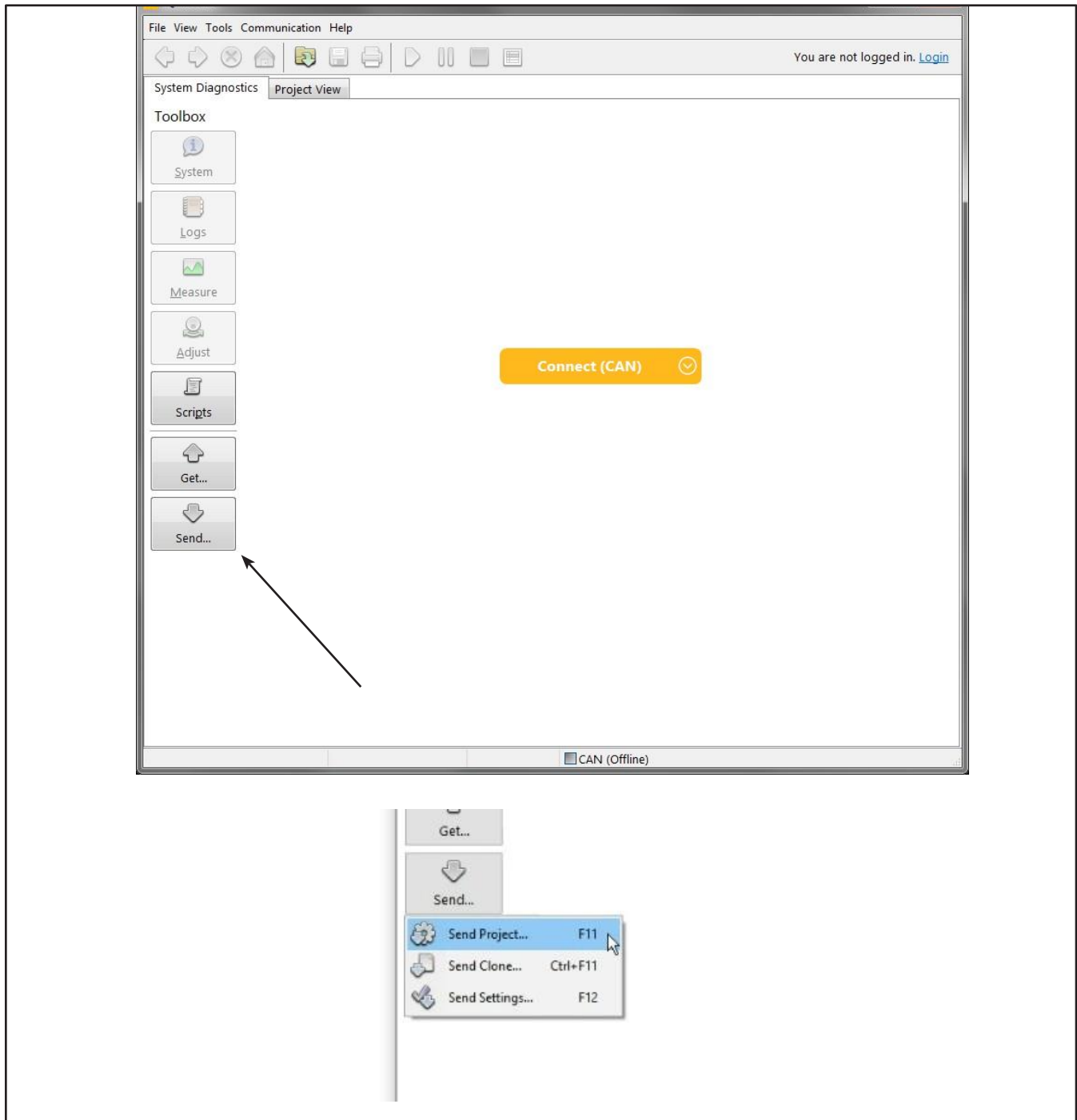


Figure 4 - Select "CAN" Then "Send", Then "Send Project"

1.7. Choose your recommended programming file (Figure 5).



Figure 5 - Choose the Programming File

1.8. Confirm that you want to program the gateway by pressing "Yes" (Figure 6).

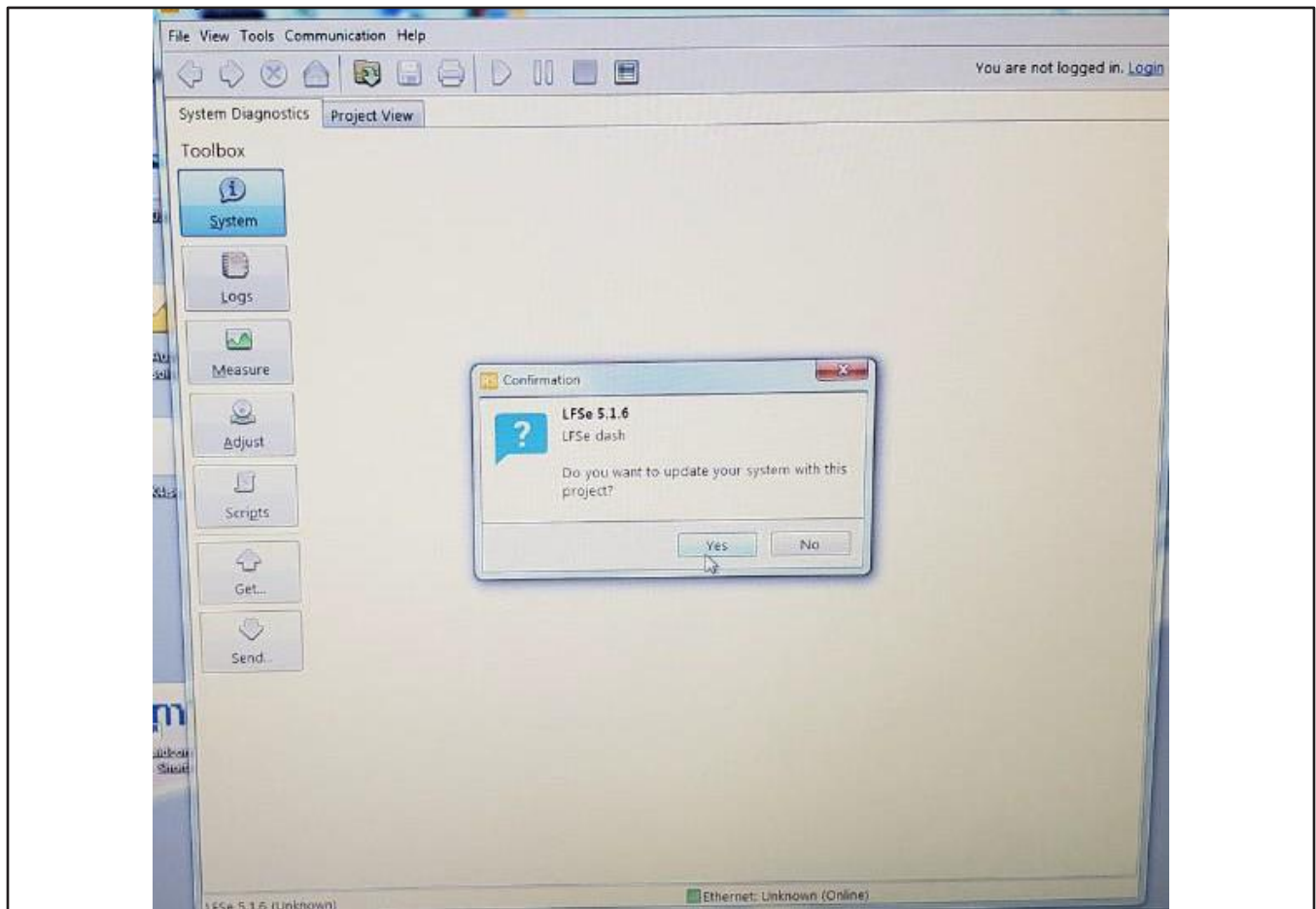


Figure 6 - Confirm the Update by Clicking "Yes"

1.9. Make sure the engine is off and press "OK" (Figure 7).

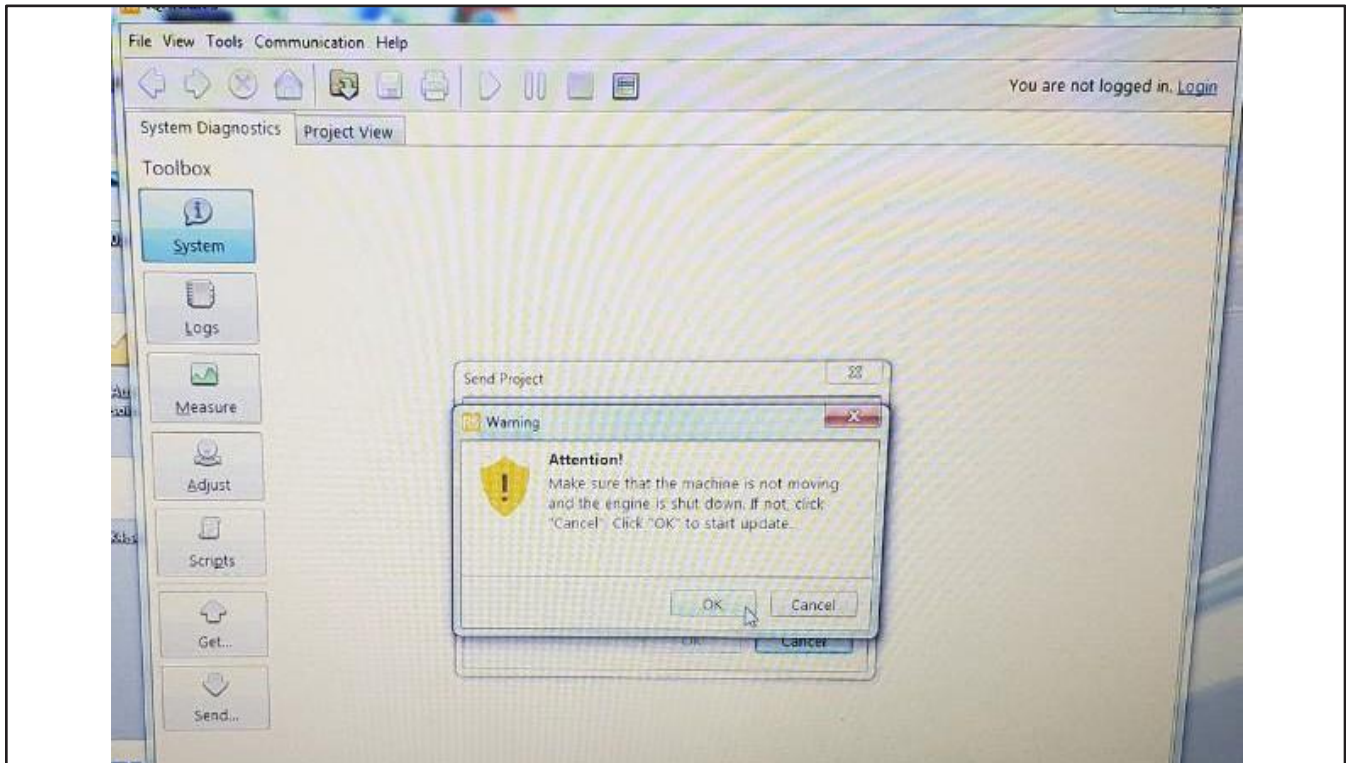


Figure 7 - Click "OK"

1.10. Once the download is complete, press "OK" (Figure 8).

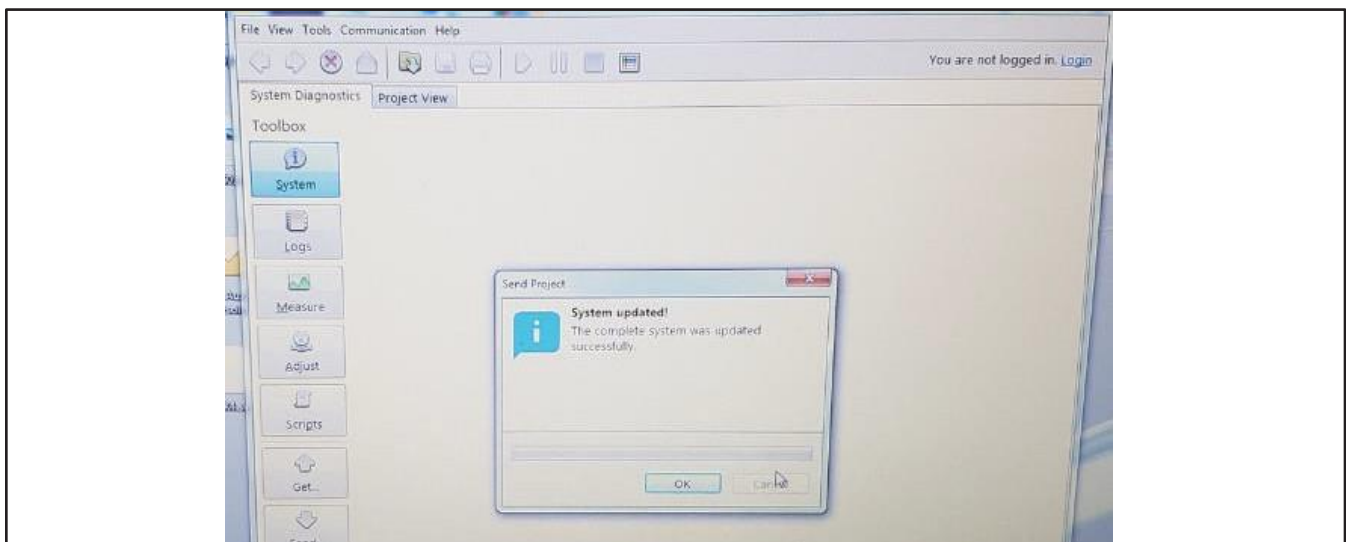


Figure 8 - Click "OK"

1.11. The vehicle can be returned to service. ❖