

Recall Campaign Bulletin



Mercedes-Benz

Campaign No. 2024100006, October 2024

TO: ALL MERCEDES-BENZ CENTERS

SUBJECT: **Model GLE (167 platform)**
Model Year 2021 – 2022

Check Acceleration Sensor Wiring Harness Routing

Mercedes-Benz AG, the manufacturer of Mercedes-Benz vehicles, has determined that on certain MY 21 – 22 GLE (167 platform) vehicles, the wiring harness of the front acceleration sensors might not be routed according to current production specifications. In the event of a certain frontal crash scenario, this could cause an improper dual-stage frontal airbag deployment rather than a single-stage deployment as intended. As such, these vehicles fail to comply with the requirements of Federal Motor Vehicle Safety Standard 208 – Occupant Crash Protection. An authorized Mercedes-Benz dealer will check the acceleration sensor wiring harness routing on the affected vehicles and rework it, if necessary.

Prior to performing this Campaign:

- VMI must be checked before performing campaigns to verify that the campaign is required on a specific vehicle. Always check for any other open campaigns and perform accordingly.
- Please review the entire Campaign bulletin and follow the repair procedure exactly as described.

Approximately 10,655 vehicles are affected.

Order No. P-RC-2024100006

Recall Campaign Bulletin

Recall Campaign Bulletin

Recall Campaign Bulletin

Recall Campaign Bulletin

Recall Campaign Bulletin

Check Acceleration Sensor Wiring Harness Routing Model 167

Check/Test Procedure

1. Remove front section from the front left fender liner.

 For basic data, see AR88.10-P-1301ME.

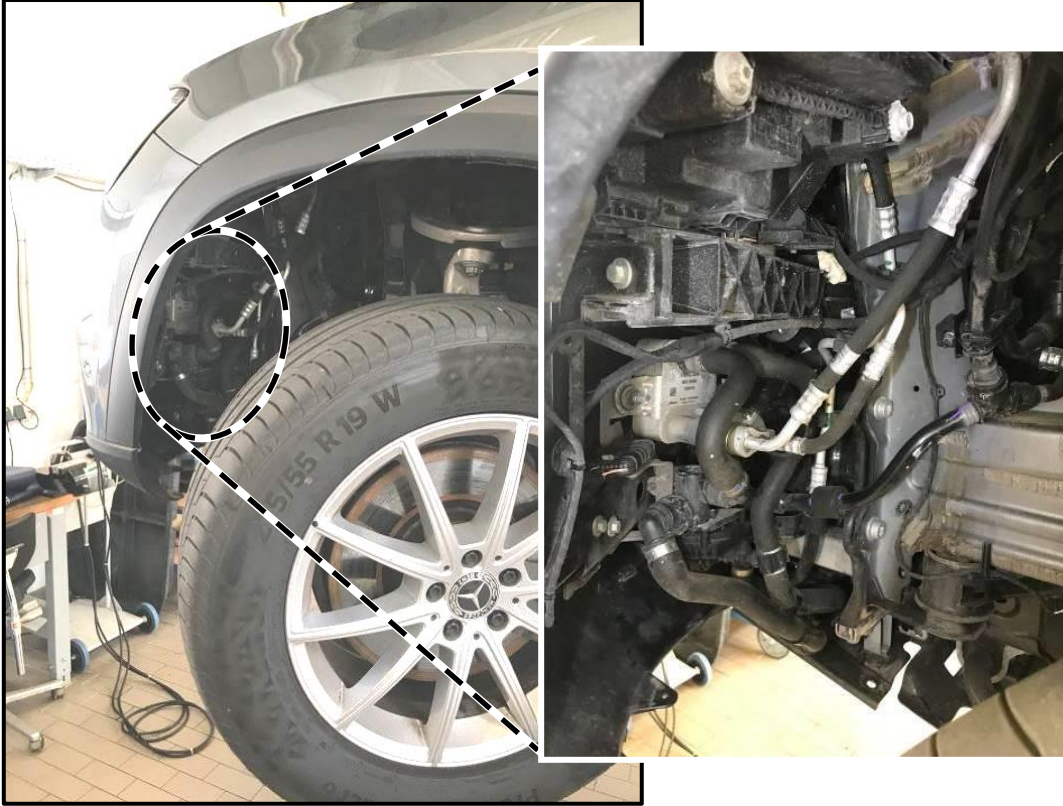


Figure 1

2. Check the wiring harness bracket (**Figure 2, A**) for the frontal acceleration sensor to ensure it is assembled correctly.

i Correct assembly position: (**Figure 2, A**).
 Incorrect assembly position: (**Figure 3, B**).



Figure 2

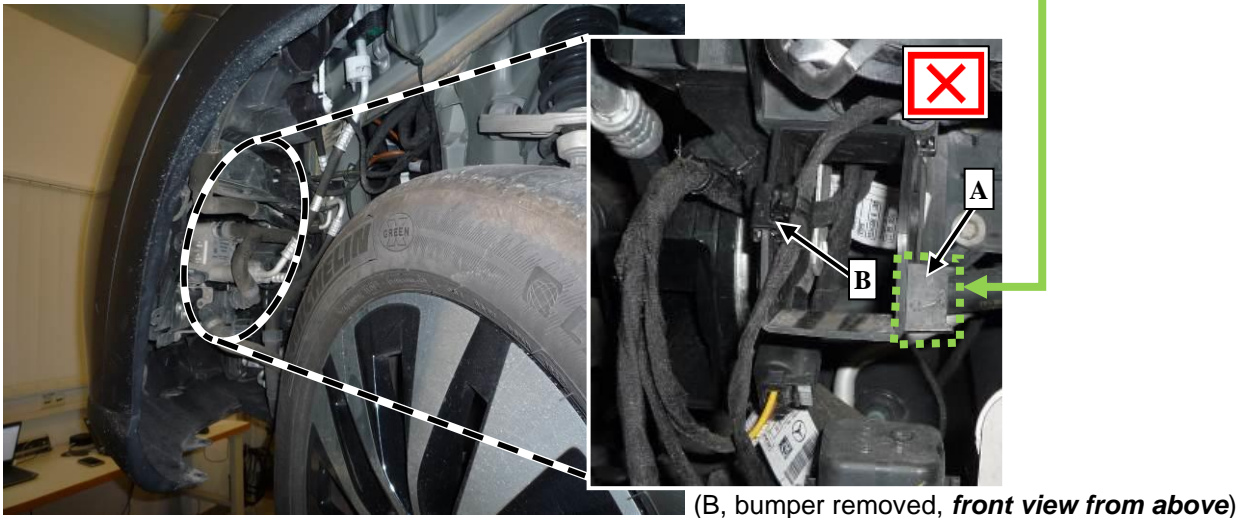


Figure 3

- a. Wiring harness bracket **correctly** (**Figure 2, A**) installed: **End measure**.
- b. Wiring harness bracket **incorrectly** (**Figure 3, B**) installed: Perform **Work Procedure**.

Work Procedure

1. Remove front bumper.
i For basic data, see AR88.20-P-2000ME.
2. Fit wiring harness bracket correctly as shown (**Figure 2, A**).
i Wiring harness bracket is attached to the existing tab (**Figure 3, A**).
3. Assemble in reverse order.

i **Note:** *The following allowable labor operation should be used when submitting a warranty claim for this repair:*

Warranty Information

Damage Code	Operation Number	Description	Labor Time (hrs.)
54 913 20	12-2267	Check electrical wiring harness for frontal acceleration sensor	0.3
	12-2268	Rework electrical wiring harness for frontal acceleration sensor (after check)	0.9

i **Note:** *Always check Xentry Operation Time (XOT) for the current OP-Code times. Labor times are subject to change and updates may not be reflected in this document.*