

4. See Figure 1 through Figure 4. Verify correct overlay for the vehicle. Regulatory configuration can be found in VIN Information on H-D Net or in the model and configuration information outlined in Table 3.
 - a. If you believe that you have received an incorrect overlay label, contact Dealer Services for replacement label.

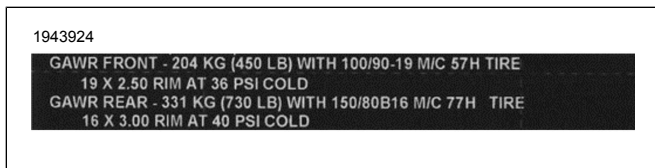


Figure 1. Street Bob (FXBB) (DOM and CAL)



Figure 2. Street Bob (FXBB) (CAN)

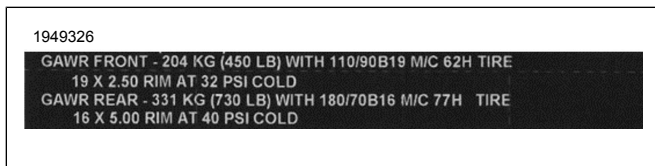


Figure 3. Low rider (FXLR) (DOM and CAL)



Figure 4. Low rider (FXLR) (CAN)

5. Wash and rinse downtube.
 - a. Use soapy water and rinse or use a 50:50 isopropyl alcohol/water solution.
 - b. Allow to dry completely.
6. Apply new label over the existing VIN label.
 - a. Remove adhesive backing from the overlay label
 - b. See Figure 5. Beginning at the upper edge of the current label (1), align the overlay label edge with the edge of the VIN label (2).

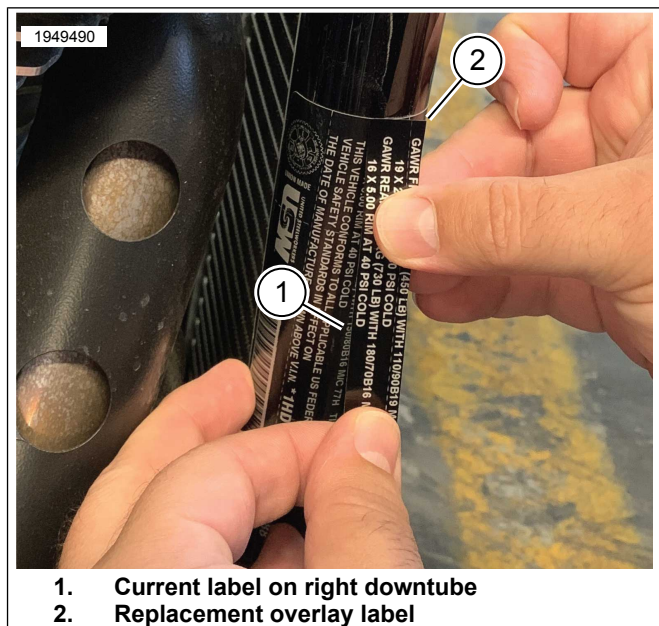


Figure 5. Align Replacement Label

- c. See Figure 6. Apply appropriate overlay label (1) to the same location and text orientation on the VIN label to correct the information.

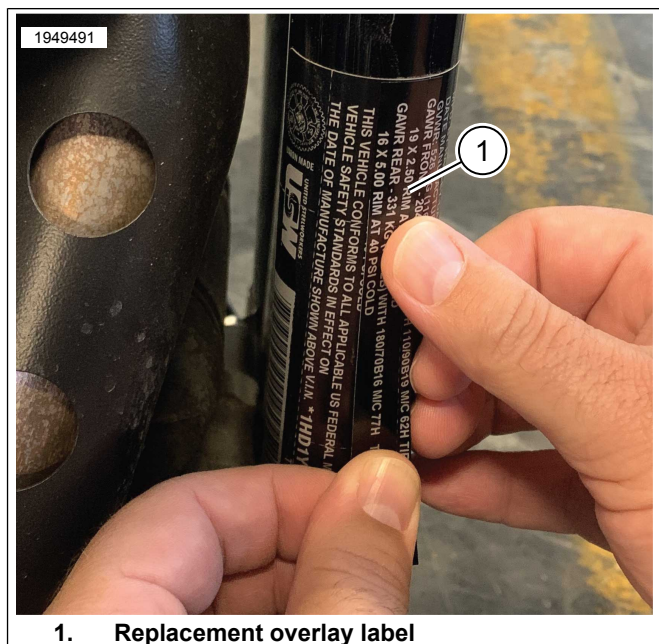


Figure 6. Secure Replacement Label

- d. Apply pressure to the entire surface of the label lengthways down the right front downtube.
 - e. Smooth out the overlay label from the middle to the ends to avoid air bubbles or creases in the new label.
 - f. Inspect for any imperfections and confirm that the VIN and Date of Manufacture are not covered or obstructed by the overlay label
7. Ensure customer has added the Owner's Manual Insert to their Owner's Manual.

Table 3.

Model	Market	Regulatory Configuration	Updated Front Tire Pressure (Cold 68.0 °F (20 °C)) PSI / kPa		Overlay Label
FXBB	United States	DOM or CAL	36	248	1
FXBB	Canada	CAN	36	248	2
FXLR	United States	DOM or CAL	32	221	3
FXLR	Canada	CAN	32	221	4

Credit Procedure

Recalls will be closed on the VINs four to five weeks after the mailing to customers has been completed.

Any returned mail or VINs without current registered addresses will have the recall left open. Contact Dealer Services for a label after the closure period if needed.