



GROUP	MODEL
Safety Recall Campaign	2024MY EV9 (MV1) GT-Line and Land w/RSPA
NUMBER	DATE
SC324	September 2024

SAFETY RECALL CAMPAIGN

REMOTE SMART PARKING ASSIST (RSPA) LOGIC IMPROVEMENT (SC324)

SUBJECT:

This bulletin provides the procedure to update the Integrated Electronic Brake (IEB) software logic of the Anti-Lock Brake System/Electronic Stability Control (ABS/ESC) system on certain 2024MY EV9 GT-Line and Land (MV1) vehicles equipped with RSPA produced from September 25, 2023 through May 28, 2024. The subject vehicles are equipped with a feature called Remote Smart Parking Assist (RSPA). RSPA allows a driver to remotely move the vehicle forward or reverse by pressing and holding a button on the key fob. Due to an error with the IEB software, repeated RSPA stops at or less than approximately 2 MPH, may result in the application of insufficient brake pressure. Insufficient brake pressure can result in extended stopping distances, thereby increasing the risk of injury. Follow the procedure outlined in this publication to update the IEB software with improved logic to apply high brake pressure in all RSPA braking conditions on the applicable vehicle. Before conducting the procedure, verify that the vehicle is included in the list of affected VINs.



NOTICE

There is no charge to the vehicle owner for this repair. Under applicable law, you may not sell or otherwise deliver any affected vehicle until it has been repaired pursuant to the procedures set forth in this bulletin.

Repair status for a VIN is provided on KDealer+ (Service → Warranty Coverage → Warranty Coverage Inquiry → Campaign Information). Not completed Recall / Service Action reports are available on KDealer+ (Consumer Affairs → Not Completed Recall → Recall VIN → Select Report), which includes a list of affected vehicles.

A printed copy is for reference only; publication information can be updated at any time. Always refer to KGIS for the latest information. After logging in kdealer.com, the newest technical publications are listed in 'Service Releases' and has the latest service information that has been released.

ECU Upgrade Procedure:

To correct this condition, the ECU should be reprogrammed using the KDS download, as described in this bulletin.

Upgrade Event Name

752.MV1 IEB Upgrade for RSPA Operation Logic Improvement

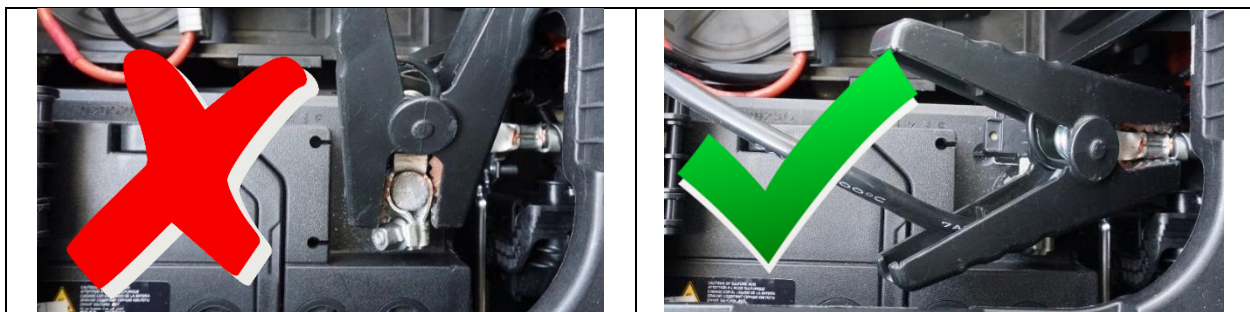
NOTICE

- Confirm a fully charged battery (12.3 volts or higher is necessary) is used or utilize a fully charged jump starter box connected to the battery.
- **Ensure the KDS GDS is sufficiently charged at 60% or higher prior to reflash.**
- All ECU upgrades must be performed with the ignition set to the 'ON' position unless otherwise stated.
- **Damaged VCI II units should not be used and promptly replaced.**
- Be careful not to disconnect the VCI-II connected to the vehicle during the ECU upgrade procedure.
- **DO NOT start the engine during ECU upgrade.**
- DO NOT turn the ignition key 'OFF' or interrupt the power supply during ECU upgrade.
- **When the ECU upgrade is completed, turn the ignition 'OFF' and wait 10 seconds before starting the engine.**
- ONLY use approved ECU upgrade software designated for the correct application.


IMPORTANT

It is recommended to ALWAYS check the Electronic Parts Catalog (EPC) to locate the ECU Part Number respective to Auto/Manual Mode ROM IDs. DO NOT reference the parts label affixed to the ECU.



[Connect the negative \(-\) terminal to the battery as shown below.](#)



NOTICE

Before attempting an ECU upgrade on any Kia model, make sure to first determine whether the applicable model is equipped with an immobilizer  security system. Failure to follow proper procedures may cause the PCM to become inoperative after the upgrade and any claims associated with this repair may be subject to chargeback.

ROM ID INFORMATION TABLE:**Upgrade Event #752**

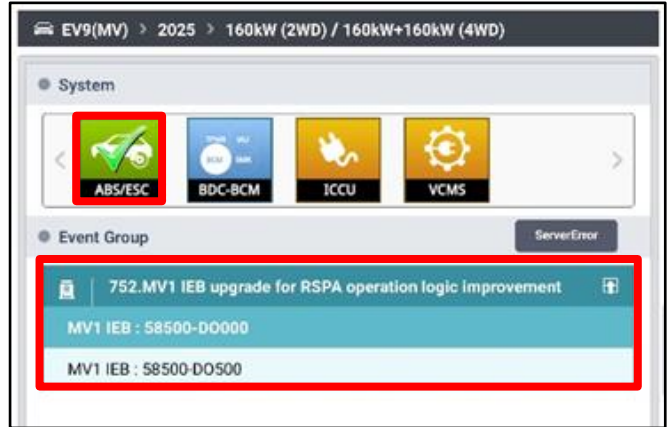
Model	Motor	IMMO		ECU P/No.	ROM ID	
					Previous	New
EV9 (MV1)	160kW (2WD) and 160kW+ 160kW (4WD)	Yes		58500 DO000	1.00	1.14
					1.01	
					1.02	
					1.03	
					1.04	
					1.05	
				58500 DO500	1.06	
					1.07	
					1.08	
					1.09	
					1.10	
					1.11	
1.12						

To verify the vehicle is affected, be sure to check the Calibration Identification of the vehicle's ECM ROM ID and reference the Information Table as necessary.

Refer to [TSB SST081](#) for instructions to upgrade the 'ABS/ESC' system:

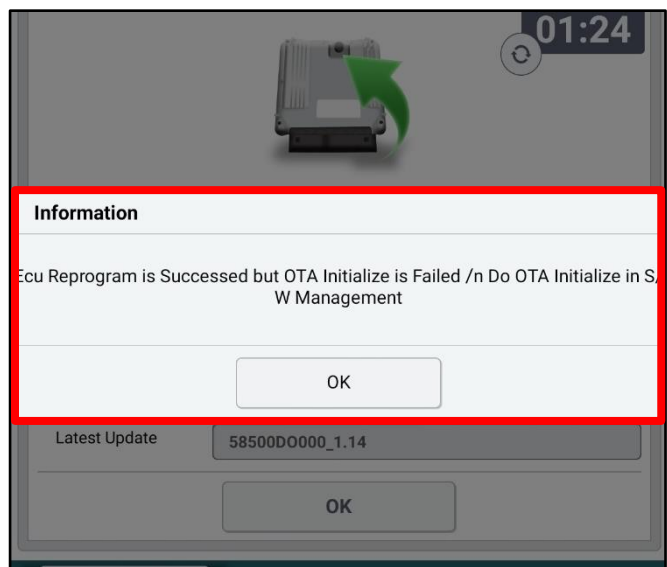
1. **UPGRADE EVENT:**

752.MV1 IEB Upgrade for RSPA Operation Logic Improvement.



Note: Once the software upgrade has completed, the pop up to the right may populate.

- If the pop up IS present, proceed to the 'Manual OTA Procedure' on page 5.
- If the pop up is NOT preset, no further action required.



Manual Upgrade Procedure:

NOTICE

The manual upgrade should ONLY be performed if the automatic upgrade fails.

If the automatic upgrade fails, turn the ignition 'OFF' for about 10 seconds then place it back in the 'ON' position to reset the control unit BEFORE performing manual upgrade.

See table below for 'Manual Mode' passwords.

Manual Mode ECU Upgrade Procedure:

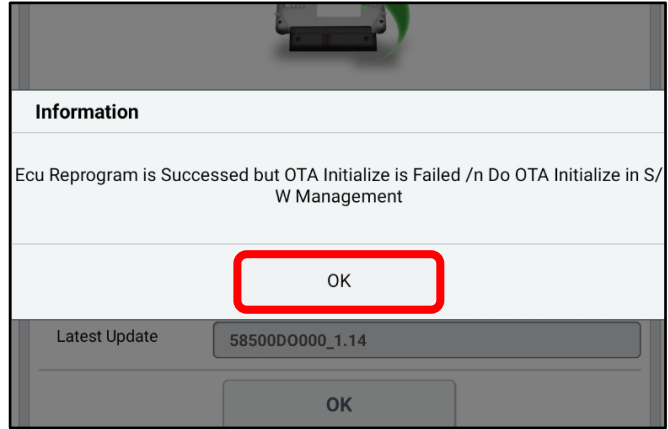
Event No.	Menu	Password
752	MV1 IEB : 58500-DO000	5850
	MV1 IEB : 58500-DO500	5500



SUBJECT: REMOTE SMART PARKING ASSIST (RSPA) LOGIC IMPROVEMENT (SC324)

Manual OTA Procedure:

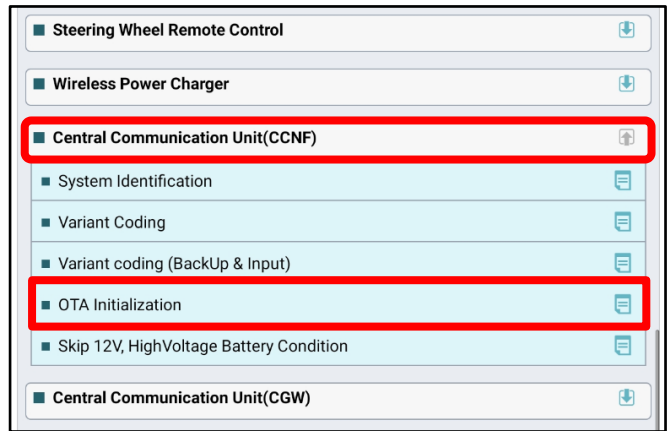
1. Select 'OK'.



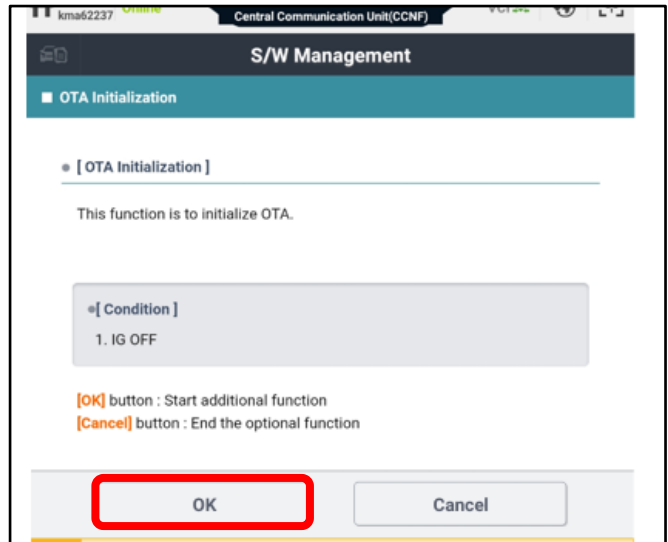
2a. Select 'S/W Management'.

2b. Select 'Central Communication Unit(CCNF)'.

2c. Select 'OTA Initialization'.

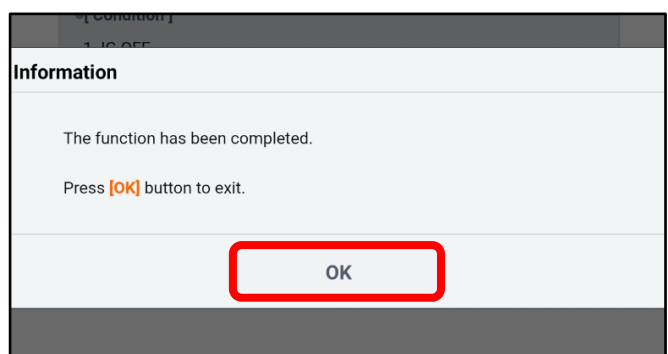


3. Select 'OK'.



4. Select 'OK'.

5. Confirm normal operation.




SUBJECT: **REMOTE SMART PARKING ASSIST (RSPA) LOGIC IMPROVEMENT (SC324)**

AFFECTED VEHICLE RANGE:

Model	Production Date Range
EV9 (MV1)	September 25, 2023 to May 28, 2024

REQUIRED TOOL:

Tool Name	Part Number	Figure	Comments
KDS	N/A		Kia Diagnostic System

WARRANTY INFORMATION:

N Code: N99 C Code: C99

Claim Type	Causal P/N	Qty.	Repair Description	Labor Op Code	Op Time	Replacement P/N	Qty.
R	58500 DO000	0	(SC324) IEB Software Upgrade	241172R0	0.4 M/H	N/A	0

Note: Refer to [Warranty Bulletin 2024-56](#) for claim submission procedures.

 **NOTICE**

VIN inquiry data for this repair is provided for tracking purposes only. Kia retailers should reference [SC324](#) when accessing the KDealer+ system.

