



NHTSA: 24V-687
Transport Canada: TC2024-522
Winnebago Towable: CAM0000039

Safety Recall:

Access Loose Metal Siding

Repair, Claim Preparation, and Filing Instructions

Please submit a warranty claim pre-authorization using the following codes and labor times:

LABOR:	OPERATION CODE	LABOR ALLOWANCE
Inspection:	44017300	1 Hour
Remove and Replace:	44017301	Time will vary

PARTS: Vary depending on floorplan.

Please follow attached inspection and, if necessary, repair instructions.

Submit all pre-authorizations and claims through the Dealer Portal. Due to the unique nature of each of these cases if there are any questions, please call our Warranty Team at 574-825-5250.

Access Metal Inspection Criteria

Where to look?

When inspecting look at the leading edge flat trim metal and at the seams of the siding

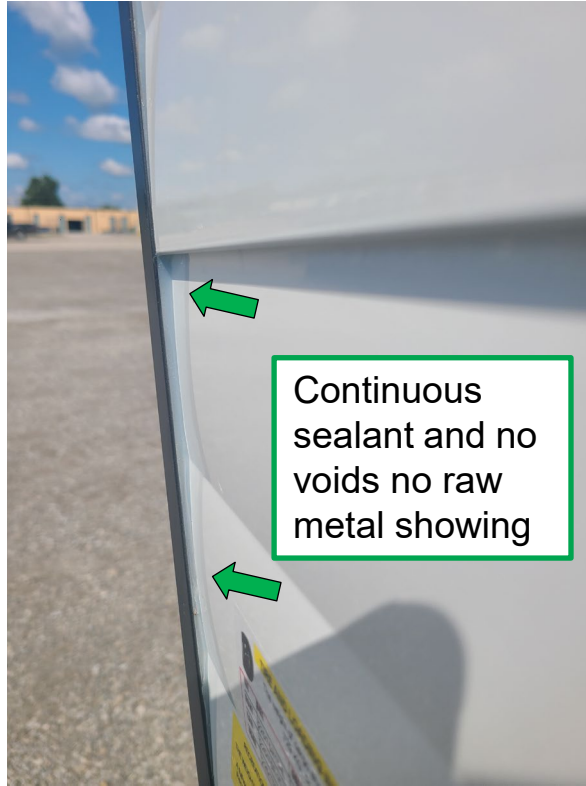
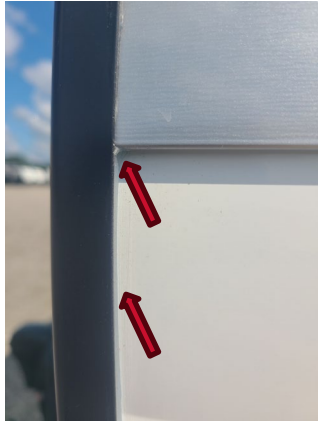


Access Metal Inspection Criteria

Acceptable

What to look for?

Leading edge flat trim:
Cut end of the siding is not visible outside of the trim. Sealant is used to fill the void and is continuous



Access Metal Inspection Criteria

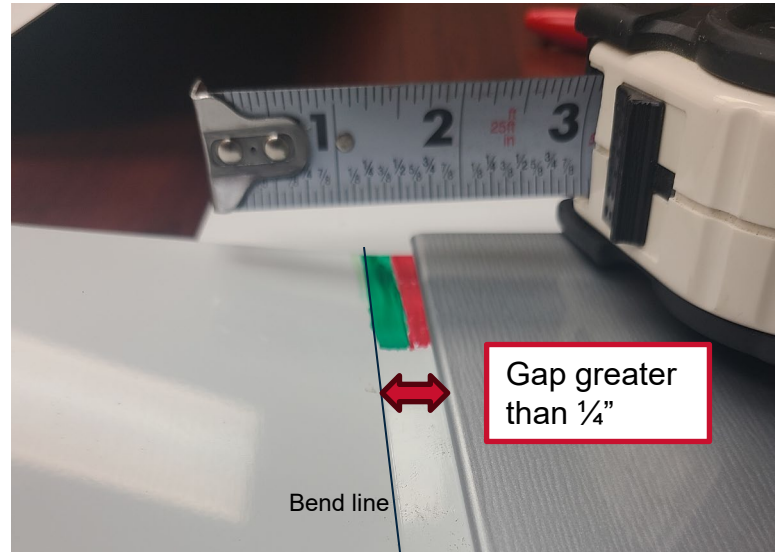
What to look for?

Siding Seam: Bottom piece of siding is engaged into the piece about with no more than $\frac{1}{4}$ " between the upper crease and next panel



W

Not Acceptable



Acceptable



Access Metal Repair Criteria

- Remove front and roof trim.
- Based on floorplan, remove any additional components, such as: lights, windows, and doors.
- Remove skirt metal and all other effected metal from the floor level up.
- Prep replacement metal by removing plastic cover.
- Install replacement metal, being mindful of the siding seam, as outlined below on following pages.
- Reinstall previously removed components and reseal.
- Install new graphics.



Installation:

- Begin the installation by marking the sidewall framing a predetermined distance to ensure that the first panel will be level. The number of marks should be enough to ensure that the middle of the panel is even with the ends. Care should be taken to ensure that the first panel is level. (See Figure 4)

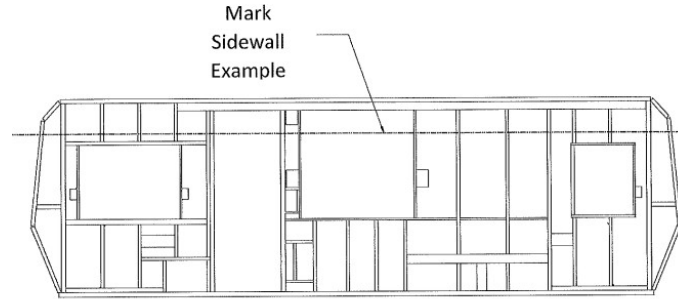
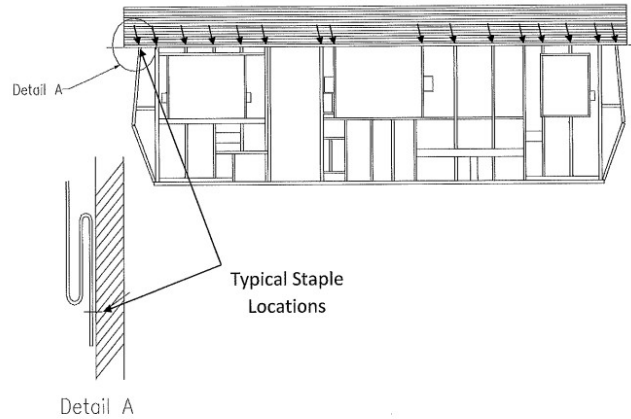


Figure 4

- Splice metal above large openings such as slide-outs and patio doors (not depicted)

Installation (Continued):

- Begin the installation of the first panel by aligning the S-Lock even with the marks
 - The S-Lock should be facing downward towards the floor
- Staple the panel into place
 - Two staples (double tap) should be used at each fastening point. (See Figure 5)
 - For best results, create space between the two staples while ensuring the staple legs are secure into the studs
 - **Warning – Be sure to inspect that the staple doesn't blow through the metal**



*Two staples (double tap) should be used at each fastening point.

Figure 5

Installation (Continued):

- Staples should be applied beginning in the center of the panel and working towards each end.
 - **Warning – Stapling at the ends towards the middle will entrap the metal which may cause heat expansion deformation (See Figure 6)**

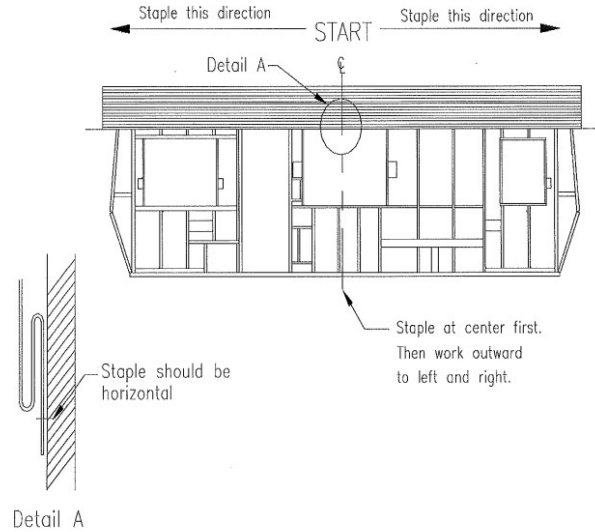


Figure 6

Installation (Continued):

- Place the raw edge of the second panel into the grip-lock of the first panel, maintaining a clearance of approximately 1/16" to 1/8" to allow for panel movement during transit and thermal expansion (See Figure 7)
- Fasten into place in the same manner as the first sheet.
 - **Warning – The S-Locks of the panels should never be opened with any tool by the installer**
 - Opening the S-Locks in this manner has been shown to lead to water intrusion into sidewalls.

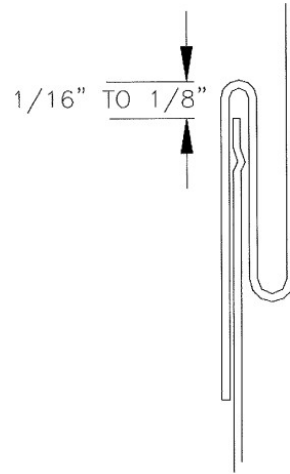


Figure 7

Installation (Continued):

- Continue installing panels down the entire wall, ensuring that each panel is level with the first panel
 - As an aid, alignment marks on the studs may be placed prior to installing each panel
- Metal terminating at all corners and openings should be routed flush with, or recessed from, all framing members. (See Figure 8)

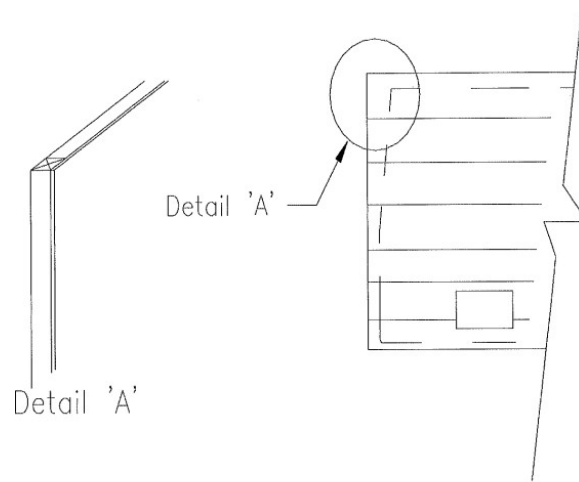


Figure 8

Installation (Continued):

- Window, door, and wheel well areas should be routed flush to, or recessed from, wood framing so that no excess metal extends into the opening (See Figure 9)

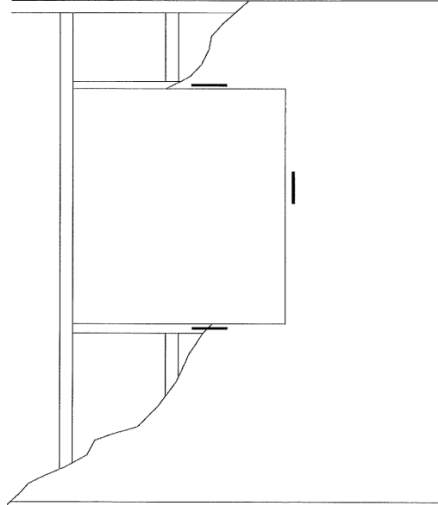


Figure 9

Installation (Continued):

- Install windows, wheel well moldings and doors so that they do not crimp the metal
- Install end wall panels, aligning the sidewall panels, utilizing the same procedures as explained above
 - **Warning – Apply silicone at all ends of metal S-Locks: in all openings, windows, doors, and corners (See Figure 10)**

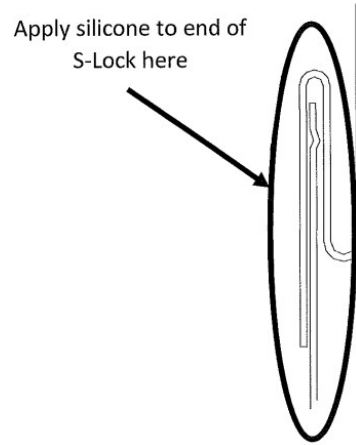


Figure 10

- Complete the installation by installing all moldings