

**◀ IMPORTANT UPDATE ▶**

*The attached TI has been updated. Refer to the details below.*

DATE	TOPIC
4/16/2025	<ul style="list-style-type: none"><li>• Updated description for part # 04004-514AN</li><li>• Updated order method for OM insert</li></ul>

*The most recent update in the attached TI will be highlighted with a **red box**.*

Please review this notification with your staff to assure that all relevant personnel have been briefed regarding this subject.

Thank you for your cooperation.

**TECHNICAL INSTRUCTIONS**

**FOR**

**SAFETY RECALL 24TA10**

**TOW HITCH COVER MAY DETACH**

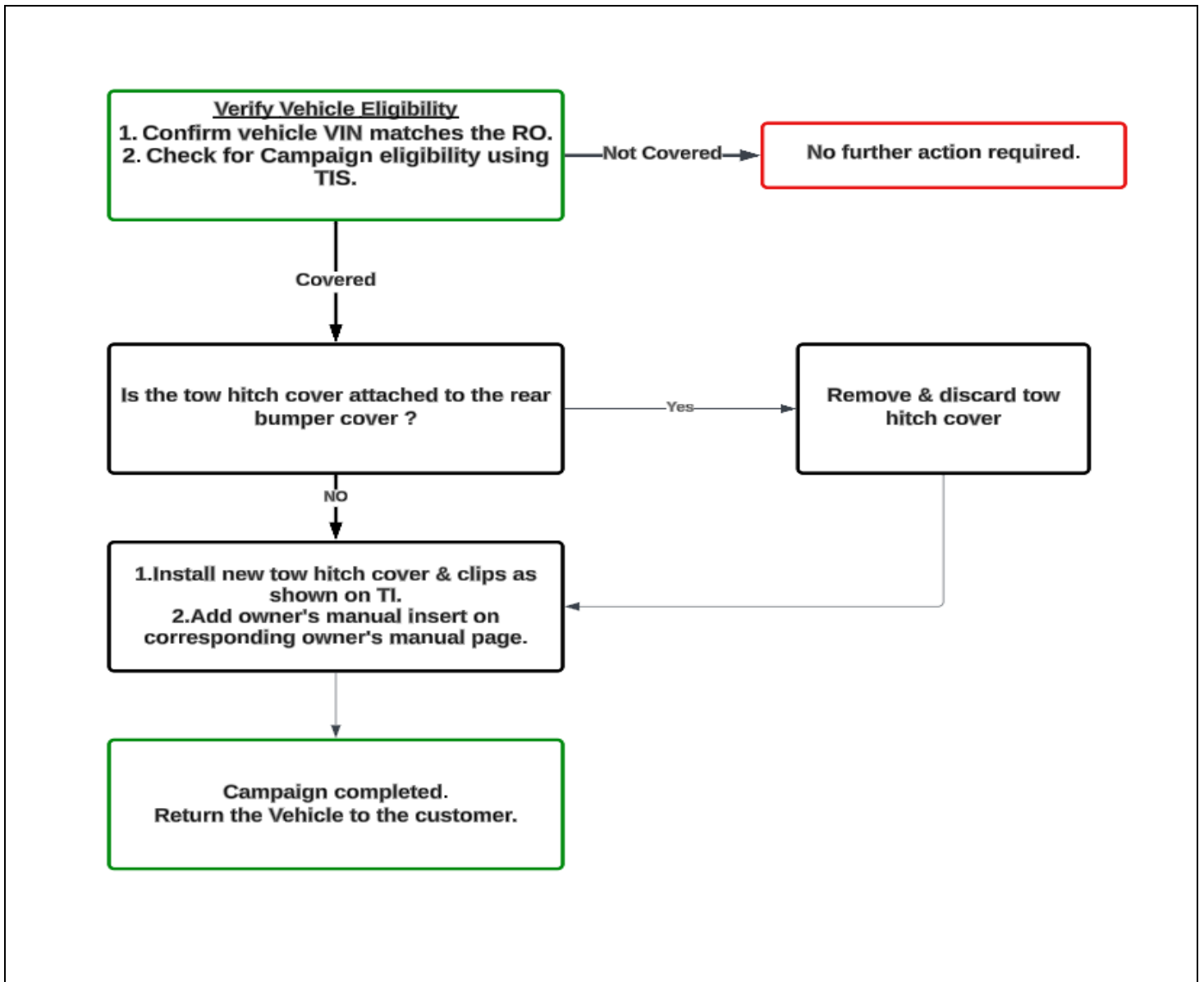
**CERTAIN 2023-2024 MODEL YEAR SEQUOIA**

The repair quality of covered vehicles is extremely important to Toyota. All dealership technicians performing this recall are required to successfully complete the most current version of the E-Learning course "Safety Recall and Service Campaign Essentials". To ensure that all vehicles have the repair performed correctly; technicians performing this recall repair are required to currently have completed all of the following courses:

- **SC19A – Toyota Recall & Service Campaign Essentials**

It is the dealership's responsibility to select technicians that have completed the above courses to perform this repair. Carefully review your resources, the technician skill level, and ability before assigning technicians to this repair. It is important to consider technician days off and vacation schedules to ensure there are properly trained technicians available to perform this repair at all times.

## I. OPERATION FLOW CHART



## II. IDENTIFICATION OF AFFECTED VEHICLES

### 1. CHECK VEHICLE FOR CAMPAIGN ELIGIBILITY

- Compare the vehicles VIN to the VIN listed on the Repair Order to ensure they match.
- Check the TIS Vehicle Inquiry System to confirm the VIN is involved in this Campaign, and that it has not already been completed.

Note: TMNA warranty will not reimburse dealers for repairs completed on vehicles that are not affected or were previously completed, even by another dealer.

### III. PREPARATION

#### A. PARTS

Part Number	Description	Qty
04004-511AN	GUARD, RR BUMPER, CTR W/ CLIPS (Matte Finish Cover, No Kick Sensor)	1*
04004-512AN	GUARD, RR BUMPER, CTR W/ CLIPS (Silver and Black Cover)	
04004-513AN	GUARD, RR BUMPER, CTR W/ CLIPS (Matte Finish with Kick Sensor)	
04004-514AN	GUARD, RR BUMPER, CTR W/ CLIPS (Gloss Black Finish with Kick Sensor)	
24TA10OMI	Owner's manual page insert (Pack of 10 Order from MDC)	1

\*Order only one kit per vehicle depending on color application. Kit includes one tow hitch cover and two plastic clips.

#### B. TOOLS & EQUIPMENT

- Drill with a 3/8" bit



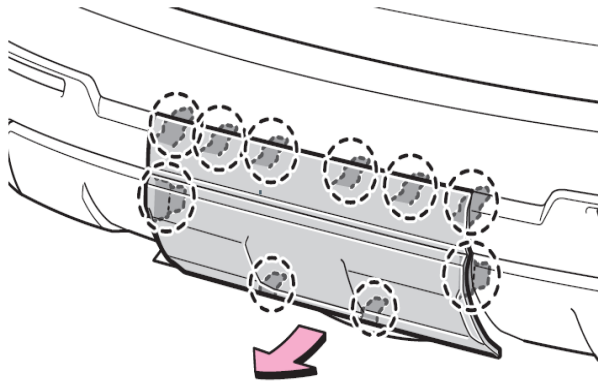
## IV. COMPONENTS

### Resin Tow Hitch Cover

Subject vehicles are equipped with a resin tow hitch cover that can detach from the vehicle while driving. The resin tow hitch cover could separate from the rear bumper of the vehicle while driving and become a road hazard, increasing the risk of a crash.

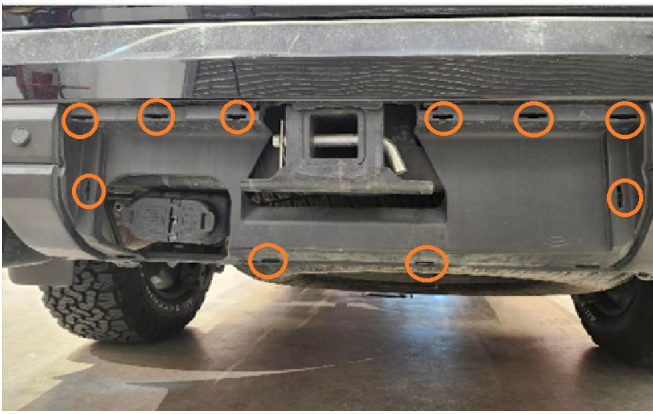


## V. REMOVE OLD TOW HITCH COVER IF IT IS STILL ATTACHED TO THE BUMPER

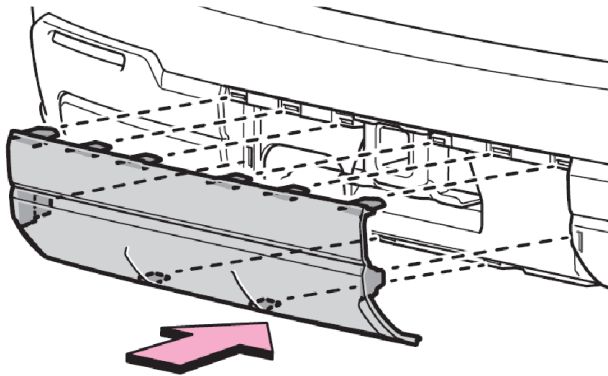


1. Pull the lower edge of the hitch cover towards the back of the vehicle, and using your hand carefully work behind it to disengage all 10 tabs.

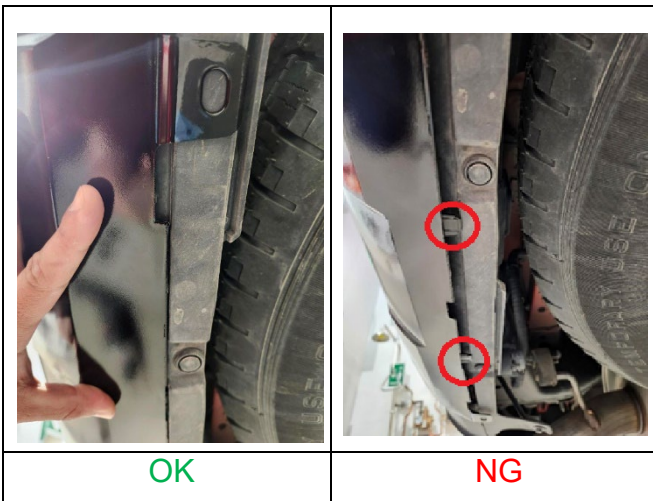
**\*If tow hitch cover is not installed on the vehicle, please have customer confirm old tow hitch cover has been discarded.**



2. Inspect all 10 slots on the bumper cover are unobstructed.



3. Install the new bumper cover making sure all tabs are correctly lined up and cover is flush with the bumper cover.



4. Install the tow hitch cover making sure all tabs are engaged, pay close attention to the alignment at the bottom to make sure the cover is flush as shown on the leftmost image. **Double check fitment before proceeding to the next step.**



5. While holding the cover flush to the bumper bottom, mark the center on both eyelets of the tow hitch cover.

6. Remove the tow hitch cover and using a drill with a 3/8" drill bit, carefully drill on the 2 marked spots.

**NOTE: Keep drill straight when drilling next to trailer connector to prevent damage to the harness.**



7. Reinstall the tow hitch cover, insert the plastic retainers and push in the clip to lock in place.

8. Locate page pertaining to removal of tow hitch cover in the owner's manual and place the owner's manual insert in front of the page using the adhesive strip on the back side.

◀ VERIFY REPAIR QUALITY ▶

## 10. APPENDIX

### A. PARTS DISPOSAL

In accordance with Federal law, please make sure all recalled parts (original parts) removed from the vehicle are disposed of in a manner in which they will not be reused, ***unless requested for parts recovery return.***