



St. Louis Office
1100 Research Boulevard
St. Louis, MO 63132
Phone: (314) 868-8620
Fax: (314) 868-9314

IMPORTANT SAFETY NOTICE

CK7G Unit Model

Serial Number Range from C01288 – C01552

[Fuel Line Assembly]

Dear Customer:

CK Power has identified that certain CK7G units, including the unit(s) you purchased, may contain a defect with the fuel line assembly that could cause a fuel leak and pose a risk of fire. **Please read this notice carefully, as it provides important safety information and instructions regarding this issue.**

Applied Units:

CK7G unit model, serial numbers range C01288-C01552. NOTE: Current production units with serial numbers greater than C01552 have already been inspected and repaired and excluded from this notice.

Reason for Notice:

The Applied Units may contain a defect with the fuel line assembly that could cause a fuel leak and pose a risk of fire. Specifically, on some CK7G units, the fuel lines could potentially fail if the lines contact surrounding components or if the hose clamps are not properly installed.

CK Power has received notice of instances where a fuel leak potentially resulting from these conditions may have contributed to a fire. No personal injuries have resulted from any of those instances.

What Should You Do:

Please immediately stop using the Applied Units. The Applied Units should not be further used until the Kit Installation referenced below, and detailed on the following pages of this Notice, is complete.

The Applied Units should be repaired and the fuel lines replaced as detailed in the Kit Installation. If you need assistance completing the steps detailed in the Kit Installation, please contact CK Power Product Support to coordinate an appointment for a free repair. CK Power Product Support contact information is available here:

Phone: (314) 868-8620

Email: productsupport@ckpower.com

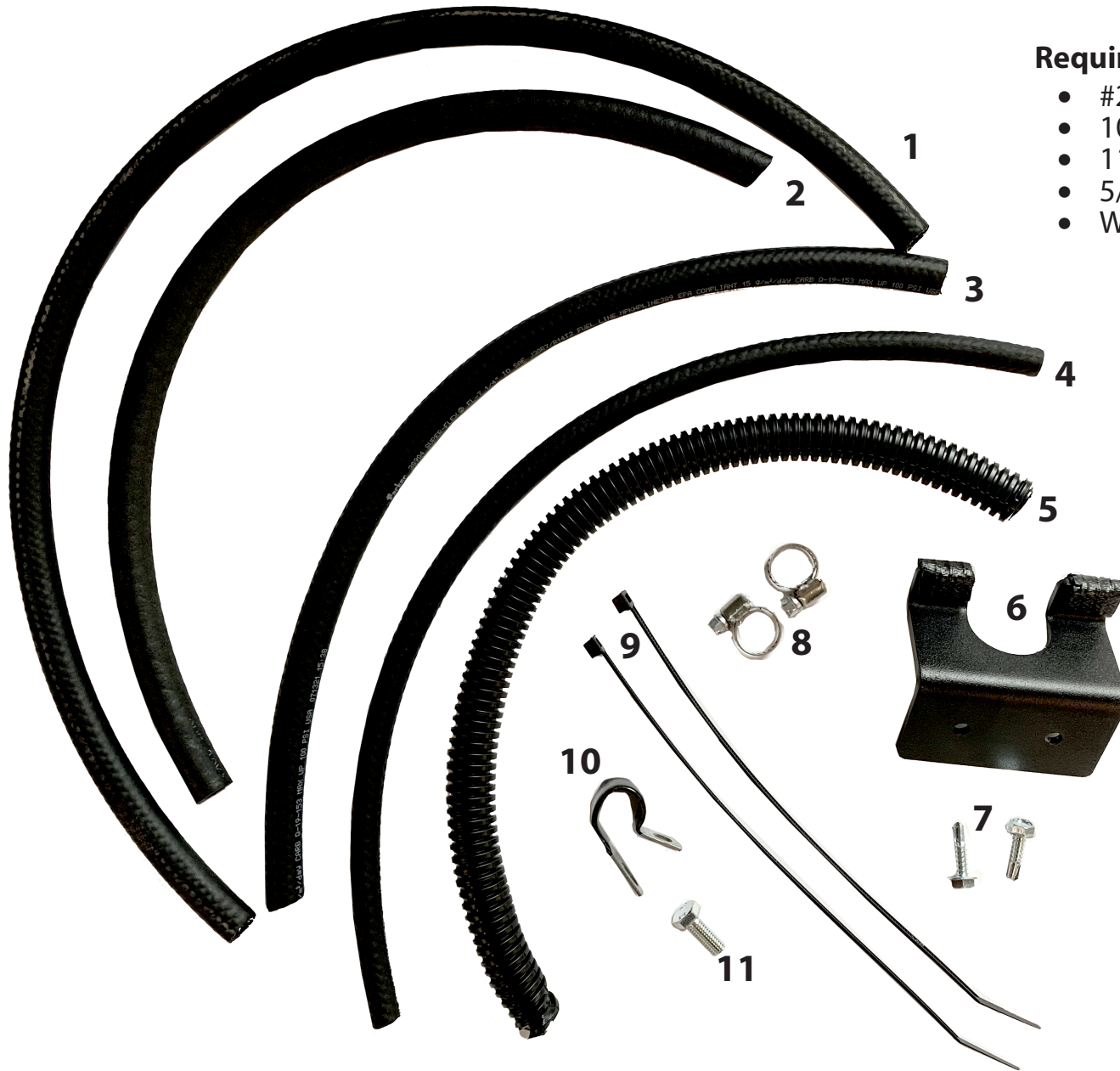
Kit Installation:

Please refer to the following pages for identification of the items included in the kit as well as an inspection and installation guide to reference.

We apologize for any inconvenience this has caused and look forward to assisting you in addressing this issue. Additionally, if you have transferred ownership of the CK7G to another company or person, we would request that you advise us of their contact information so we can provide this information to them immediately. Thank you for your anticipated cooperation. Obviously the safety of our customers is the utmost concern.

September 13, 2023

CK7G-HC1 & CK7G-HC1HK Fuel System Inspection Kit



Required Tools:

- #2 Phillips or 1/4" nut driver (hose clamps)
- 10 mm Socket/wrench (p-clamp)
- 11 mm Socket/wrench (enclosure housing)
- 5/16" Nut driver (self tapping screws)
- Wire cutter (trim zip-ties)

Kit Includes:

Repair Support items: (If needed)

- (1) 1/4" Fuel hose 24" long
- (2) 1/4" Fuel hose 15" long
- (3) 5/16" Fuel hose 16" long
- (4) 3/16" Vent hose 16" long
- (8) Hose Clamp-2

New Upgrade items: (Installed on all)

- (5) Slit corrugated sleeve 15" long
- (6) Recoil baffle bracket
- (7) Self-tapping screws - 2
- (9) Zip-ties - 2
- (10) Hose P-clamp
- (11) Hose clamp bolt

CK7G-HC1 & CK7G-HC1HK FUEL SYSTEM INSPECTION INSTRUCTIONS

Inspect hoses for signs of abrasion and replace as needed. Confirm the fuel hose clamps are in place and secure. Please follow these steps for fuel system rerouting instructions.

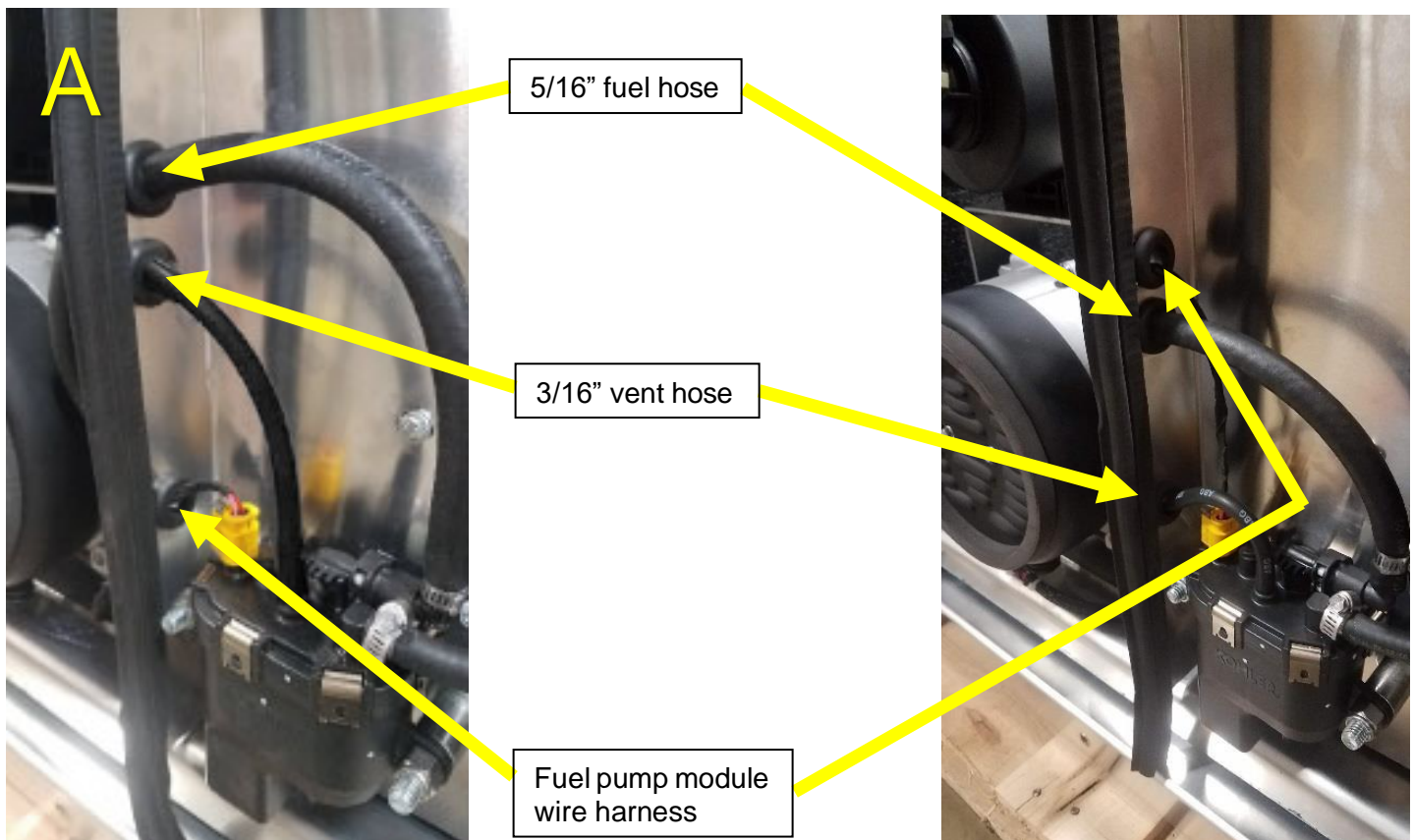
- 1) Loosen 2 bolts on the Top Panel closest to the Back Panel.
- 2) Remove the Back Panel by unbolting 8 bolts.



- 3) Remove bulb seal edging (A) from baffle.
- 4) Inspect 5/16" fuel hose and 3/16" vent hose for signs of abrasion and replace if needed.
- 5) Relocate hoses and fuel pump module wire harness to different cutout slots in baffle by moving grommets to locations shown.
- 6) Assemble bulb seal edging (A) onto baffle.

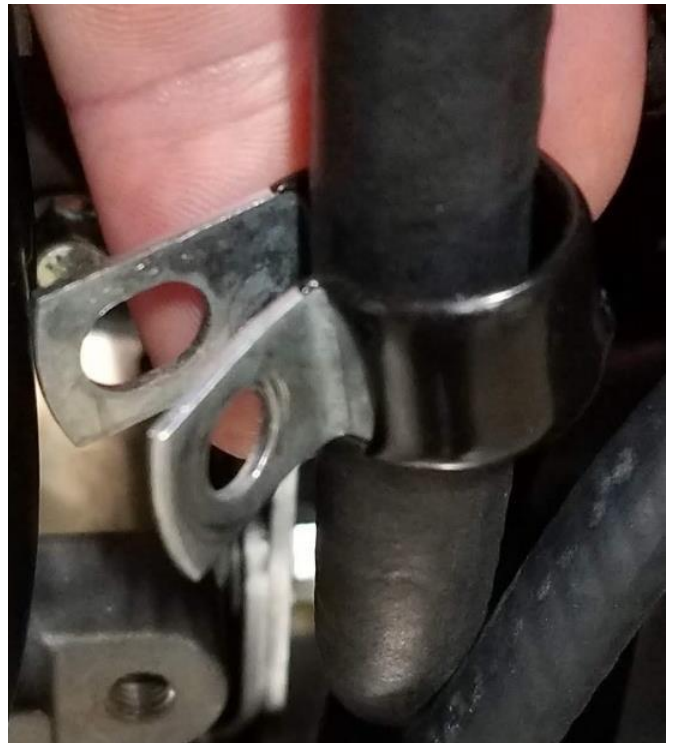
Before

After

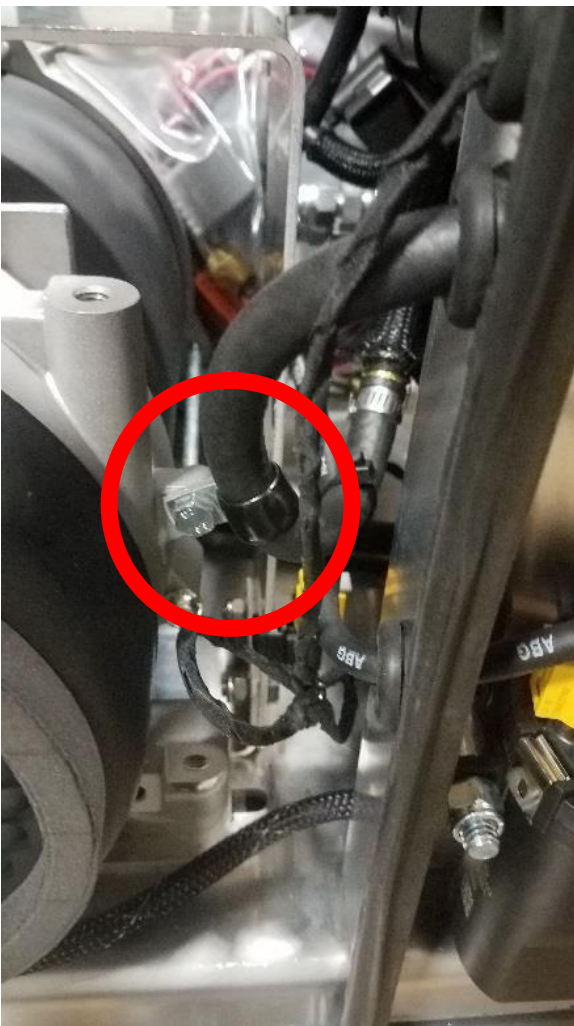


7) Detach 3/16" vent hose from fuel pump module.

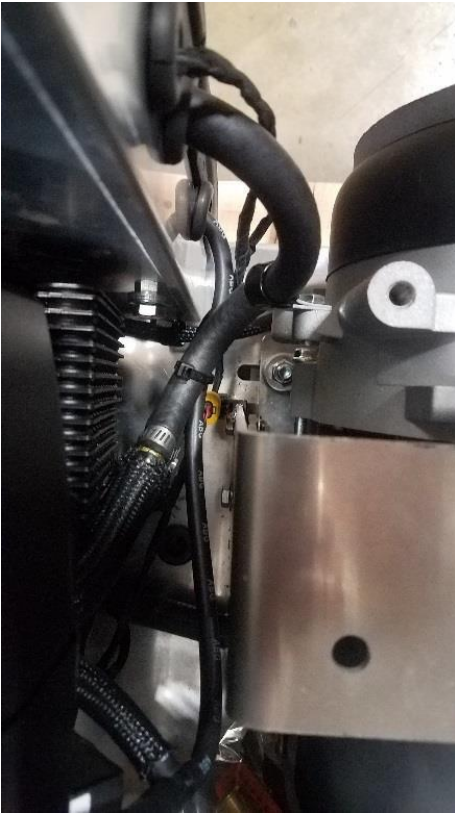
8) Install hose clamp to 5/16" fuel hose.



- 9) Install bolt through hose clamp into alternator boss. Do not tighten bolt to allow for hose adjustment.
- 10) Route the 5/16" fuel hose in a way that it does not come in contact with the air filter bracket or engine.
- 11) Tighten hose clamp bolt.

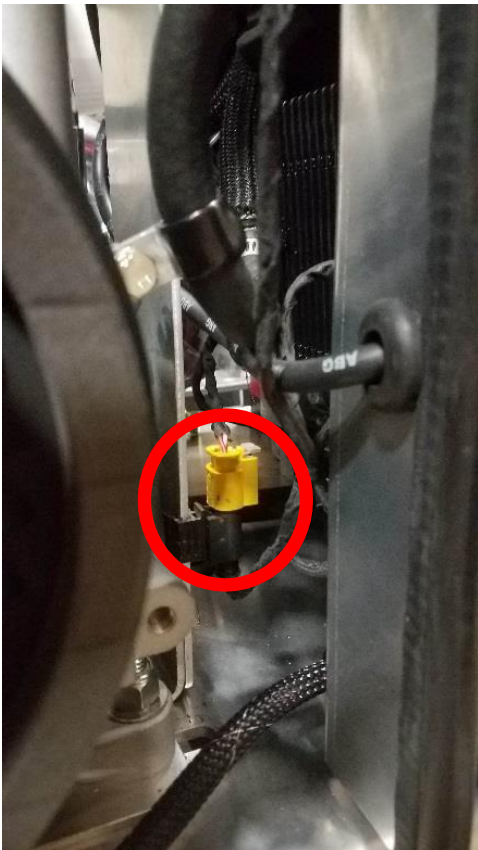


- 12) Reroute the 3/16" vent hose so it runs flush under the 5/16" fuel hose and does not come in contact with anything besides the 5/16" fuel hose.
- 13) Verify 3/16" vent hose is under the 5/16" fuel hose then zip-tie the two hoses together as shown.



Zip-tie

- 14) Reattach 3/16" vent hose to the fuel pump module .
- 15) Ensure 5/16" fuel hose and 3/16" vent hose are not in contact with the yellow wire harness end. Use a flat head screw driver to slide the wire harness end down the air filter bracket if needed.



16) Apply slit corrugated sleeve to 1/4" hose running from filter to fuel pump module.



- 17) Attach the recoil baffle bracket to the isolation plate by using the self-tapping screws provided.
- 18) Verify the fuel hose is not touching the push back bracket.
- 19) Inspect 1/4" fuel hose coming through the isolation plate for signs of abrasion and replace if necessary.

