



MORBARK®

Post Production Modification (PPM-110)

PDM Terminal Epoxy Application



MORBARK

Note: Make sure you read and understand these instructions before performing the procedure. If you are confused or uncertain about the contents of this document, contact your local dealer or Morbark directly at 800-255-8839.

Publish Date: Oct 15, 2024

Last Revised: Oct 15, 2024

Created by: DP

Total Pages: 3

PPM# 110

Contents

Contents..... 1
Tools Required..... 1
Overview..... 2
Affected Machines..... 2
Safety..... 2
Procedure 3

Tools Required

- Epic Resin S7511-26 A/B Packet (Morbark Part Number 39252-903)

NOTE: The Epic Resin is best used within six months of the Manufacturing date when stored at 77F (25C). e.g. Manufactured date of August 14, 2024 is best used by February 14, 2024.



- Disposable Nitrile or Latex Gloves
- Wood Stick Applicator
- Miscellaneous shop tools



Overview

This procedure describes the steps required to apply Epoxy Resin to both the Positive and Negative PDM battery studs.

Affected Machines

The PPM is for all Eeger Beaver (EB)1821, EB2131, EB2230, and M20 machines that have a Cat 7.1 or Cat 9.3 engine.

Safety

Dangers, Warnings, and Cautions

- ▲ DANGER** A Danger explains hazards that will result in personal injury or death.
- ▲ WARNING** A Warning explains hazards that might result in personal injury or death.
- ▲ CAUTION** A Caution explains hazards that could cause damage to equipment and/or machinery.

Personal Protective Equipment (PPE)

For your safety, always adhere to the following guidelines when performing this procedure:

- Always wear personal protective equipment (hard hat, safety goggles/weld mask, work/weld gloves, hearing protection, etc.) when working on this equipment.
- Know and avoid pinch/ crush points.
- Clean all oil spills, and debris around work area to reduce the risk of slips, trips and falls.
- If lifting or leveraging equipment and/or assemblies always make sure all ramps, hoists, lift straps/chains, jacks, jack stands, etc., are rated and approved for the weights being carried/lifted.

Procedure

- 1) Locate the Power Distribution Module (PDM) inside the engine enclosure.
- 2) Clean all threads on the connectors, removing dust and debris.
- 3) Open Resin Package. Package includes chemical packet and instructions.
- 4) Mix Resin per instruction card. (See Figure 1 for reference.)

- a. Grip Firmly on each side of Pro-Pak and pull to open and remove the clip used to separate chemicals.
- b. Knead package thoroughly until components are well mixed.
NOTE: Contents of packet will feel warm as they are mixing.

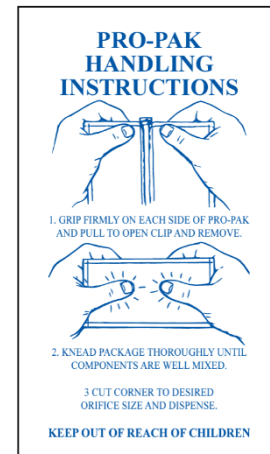
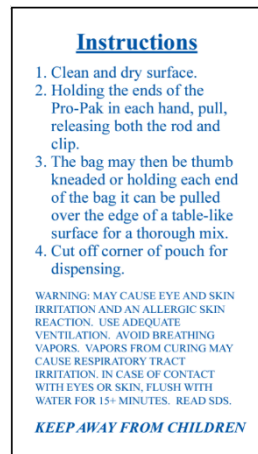


Figure 1 Instructions included in Resin Package

- 5) Cut corner of packet.
- 6) Apply resin mix directly to the bolt, or use wood stick applicator if needed. Be sure to cover a section of the lock nut and all threads on the bolt, as well as where the bolt connects to the back plate. (See Figure 2 for reference)

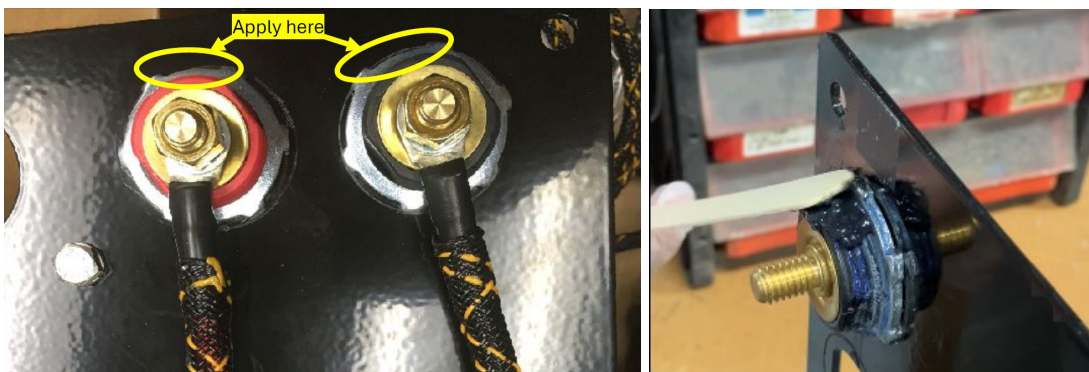


Figure 2: Resin Application Location

- 7) Let the epoxy cure for a minimum of 4 hours before using machine.