



NHTSA: 24V-618
Transport Canada: TC2024-479
Winnebago Towable: CAM0000038

Safety Recall:
 Non-GFCI Outlet Installed – Minnie 2500FL

Repair, Claim Preparation, and Filing Instructions

Please submit a warranty claim pre-authorization using the following codes and labor times:

LABOR:	OPERATION CODE	LABOR ALLOWANCE
---------------	-----------------------	------------------------

Remove and Replace:

2024 Model Year	44016601	0.30 / per outlet
2021 - 2023 Model Year	44016601	0.30 / per outlet

Parts:

- WGO RECALL KIT # 283346** (2024 Model Year)
- WGO RECALL KIT # 283347** (2021 - 2023 Model Year)

Please follow attached repair instructions.

Submit all pre-authorizations and claims through the Dealer Portal. If there are any questions, please call our Warranty Team at 574-825-5250.

Repair Instructions:

Non-GFCI Outlet Installed – Minnie 2500FL (2024 Model Year)

Tools Needed:

Screw Gun with Philips & Square Bit

Stanley Knife or Small Saw with Wood Blade

Wire Cutter/Strippers

GFCI Receptacle Tester

Vacuum Cleaner

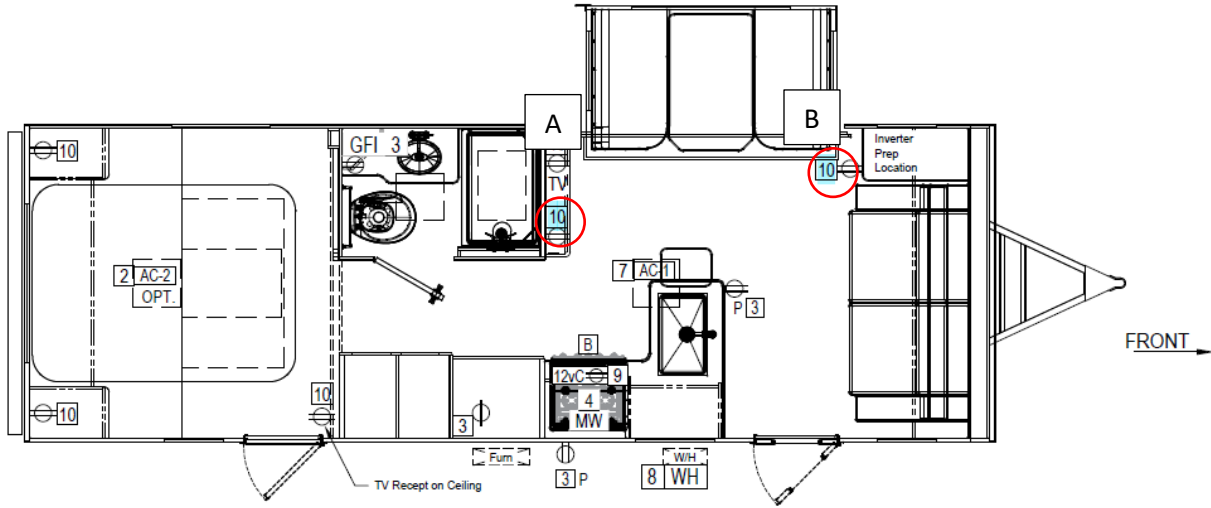
Non-Contact AC Voltage Detector

Repair Instructions:

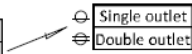
- 1) Check receptacles with GFCI tester.
- 2) Disconnect shore power & turn off battery disconnect switch **OR** turn off number #10 Breaker (General)
- 3) Remove receptacle from hole. (see print on next page for both locations)



- 4) Reconnect shore power & turn on battery disconnect switch **OR** turn on number #10 Breaker (General). ****Make note of hot line for receptacle install with non-contact AC Voltage Detector and REPEAT STEP 2. WARNING: FAILURE TO FOLLOW INSTRUCTIONS MAY RESULT IN ELECTRICAL SHOCK.**



Legend	
110V outlet	⊖
110V outlet (Ceiling)	⊖
Junction Box	J
Splice connector	S/C
GFI Outlet	GFI
GFI protected outlet	GFI-P
Converter	12V-C
Microwave / Single Outlet	MW
Water Heater	WH
Main Air Conditioner	AC-1
(2nd) Air Conditioner	AC-2
Breaker Box	B
Fireplace	FP

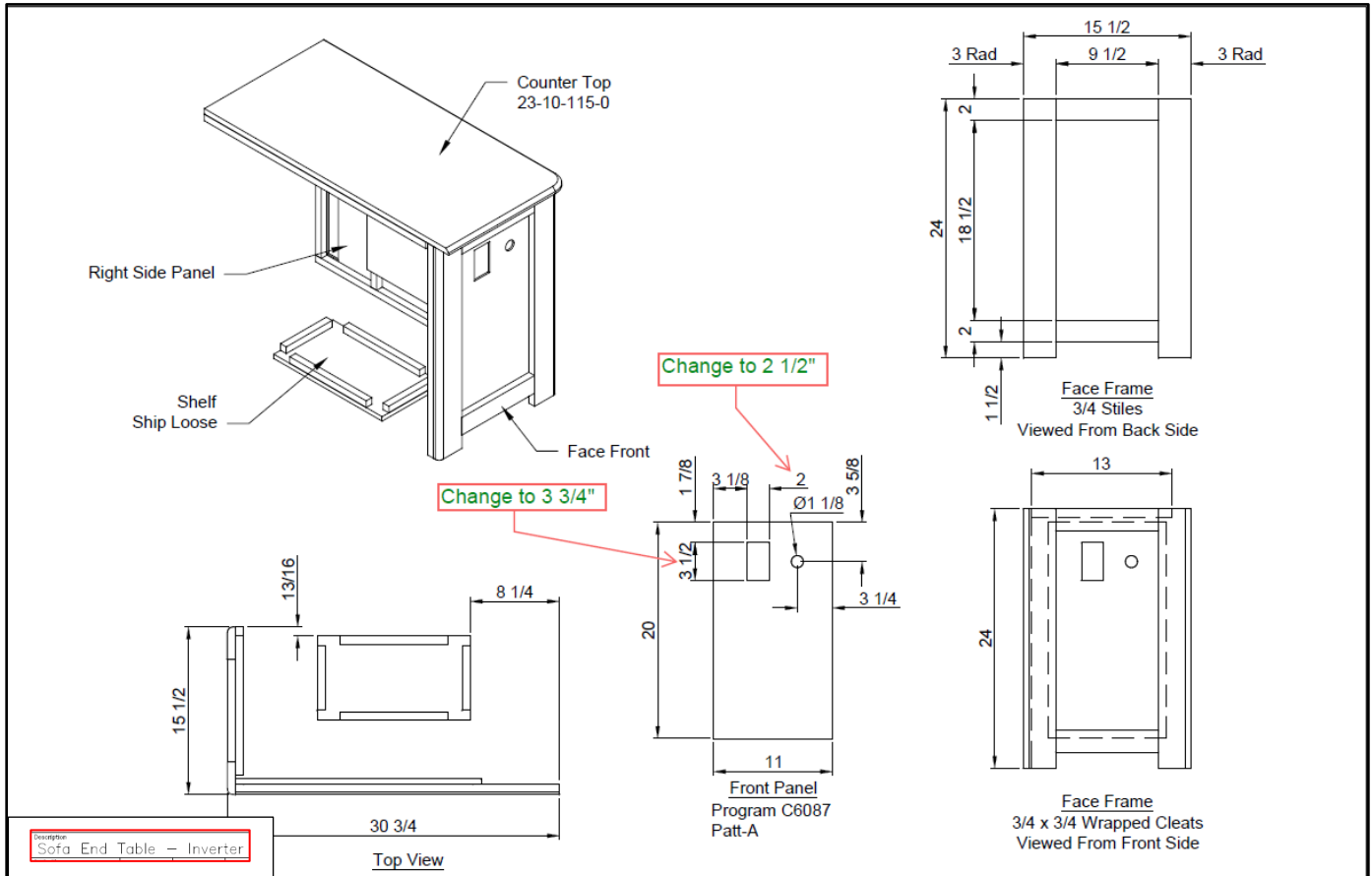


Loop Wire to Inverter Cabinet for Inverter Prep →

Slot	Circuit	Breaker size	Usage	Wire size	Rough Wire Markings
6	6	N/A	N/A	N/A	N/A
5	5	N/A	N/A	N/A	N/A
4	4	20	Micro	12-2	Yellow
3	3	15	GFI Line	14-2	Hot-Black / white protected
2	2	20	2nd A/C opt.	12-2	Yellow - 2 Tape
1	1	15	Slide Box	14-2	Blue
Main		50	Main Supply line	6-3	
Main		50			
7	7	20	Main A/C	12-2	Yellow - 1 Tape
8	8	15	Water Heater	14-2	Purple
9	9	15	Converter	12-2	Yellow
10	10	15	General Outlet	14-2	Blue
11	11	N/A	N/A	N/A	N/A
12	12	N/A	N/A	N/A	N/A

Power Cord 35' Type 'STW' 50A 2 pole (3 6ga) (1 8ga)

5) Change hole size from 2" x 3 1/2" to 2 1/2" x 3 3/4" (note see print below)



6) Cut Romex in half, if necessary.





- 7) Insert Romex ends through the back side of the electrical box pulling around 6" out the front of the box.
- 8) Install electrical box into new hole size.
- 9) Install new receptacle & cover plate.



- 10) Turn power back on and test receptacle.



Repair Instructions:

Non-GFCI Outlet Installed – Minnie 2500FL (2021 – 2023 Model Year)

Tools Needed:

Screw Gun with Philips & Square Bit

Stanley Knife or Small Saw with Wood Blade

Wire Cutter/Strippers

GFCI Receptacle Tester

Vacuum Cleaner

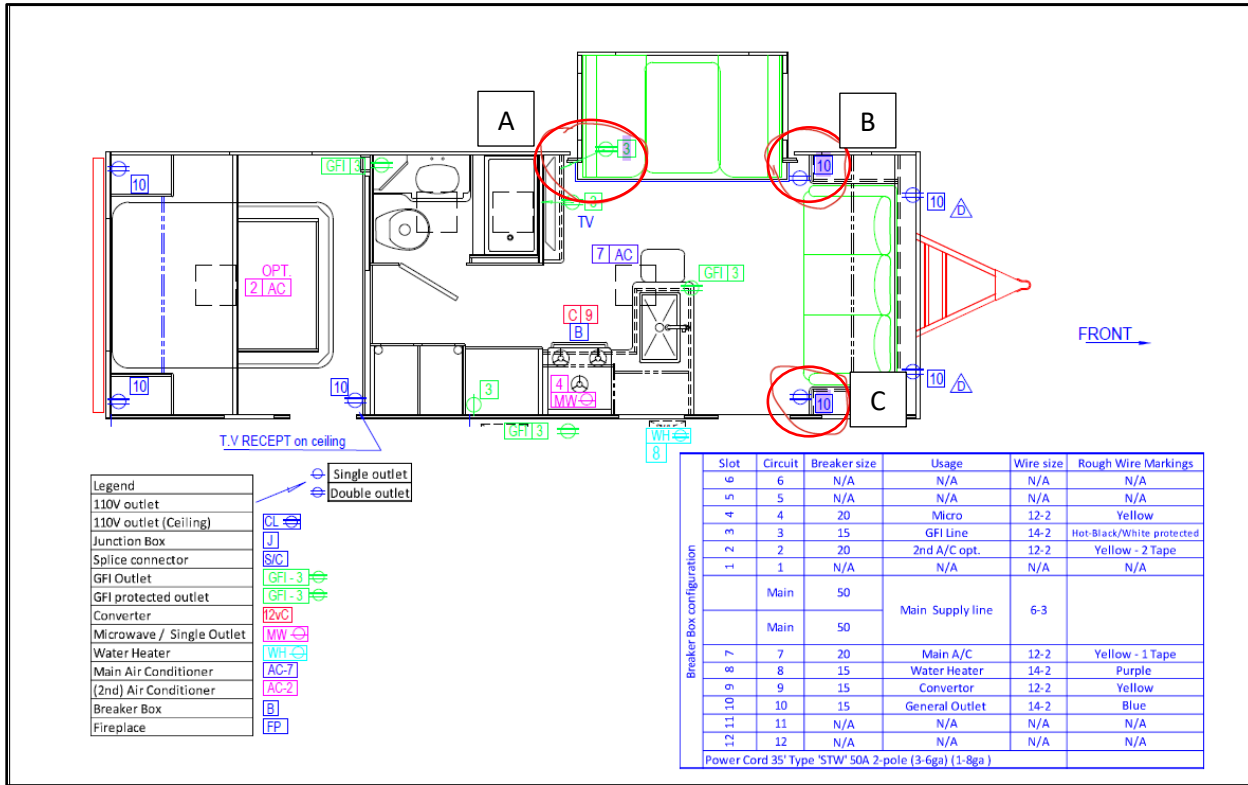
Non-Contact AC Voltage Detector

Repair Instructions:

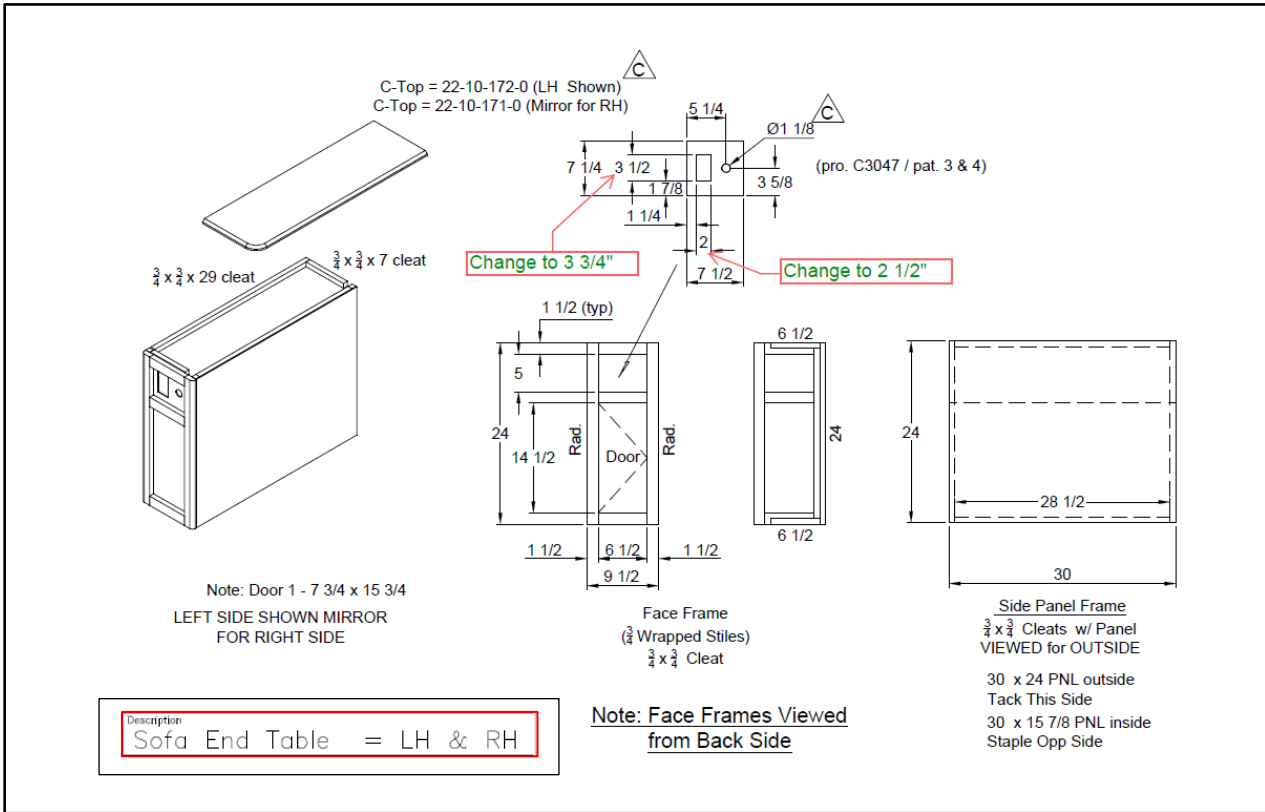
- 1) Check receptacles with GFCI tester.
- 2) Disconnect shore power & turn off battery disconnect switch **OR** turn off number #10 Breaker (General)
- 3) Remove receptacle from hole. (see print on next page for all 3 locations)



- 4) Reconnect shore power & turn on battery disconnect switch **OR** turn on number #10 Breaker (General). ****Make note of hot line for receptacle install with non-contact AC Voltage Detector and repeat STEP 2. WARNING: FAILURE TO FOLLOW INSTRUCTIONS MAY RESULT IN ELECTRICAL SHOCK.**



4) Change hole size from 2" x 3 1/2" to 2 1/2" x 3 3/4" (note see below print)



5) Cut Romex in half, if necessary.



- 6) Insert Romex ends in through the back side of the electrical box pulling around 6" out the front of the box.
- 7) Install electrical box into new hole size.
- 8) Install new receptacle & cover plate.



- 9) Turn power back on and test receptacle.





NHTSA: 24V-618
Transport Canada: TC2024-479
Winnebago Towable: CAM0000038

Safety Recall:
 Non-GFCI Outlet Installed – Voyage 3438RK - 3235RL - 3538RK Models

Repair, Claim Preparation, and Filing Instructions

Please submit a warranty claim pre-authorization using the following codes and labor times:

LABOR:	OPERATION CODE	LABOR ALLOWANCE
---------------	-----------------------	------------------------

Remove and Replace:	44016601	0.30 / per outlet
----------------------------	----------	-------------------

Parts:

WGO RECALL KIT # 283345

Please follow attached repair instructions.

Submit all pre-authorizations and claims through the Dealer Portal. If there are any questions, please call our Warranty Team at 574-825-5250.



Repair Instructions:

Non-GFCI Outlet Installed – Voyage 3438RK - 3235RL - 3538RK

Tools Needed:

Screw Gun with Philips & Square Bit

Stanley Knife or Small Saw with Wood Blade

Wire Cutter/Strippers

GFCI Receptacle Tester

Straight Screwdriver

Non-Contact AC Voltage Detector

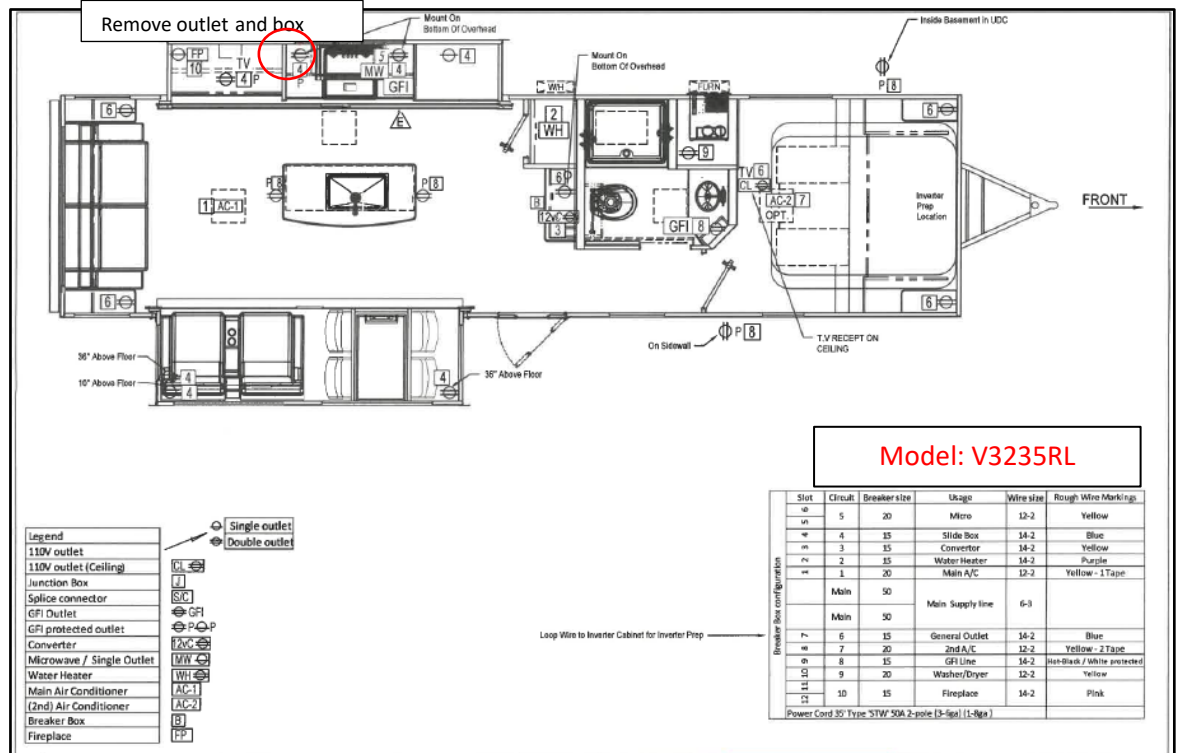
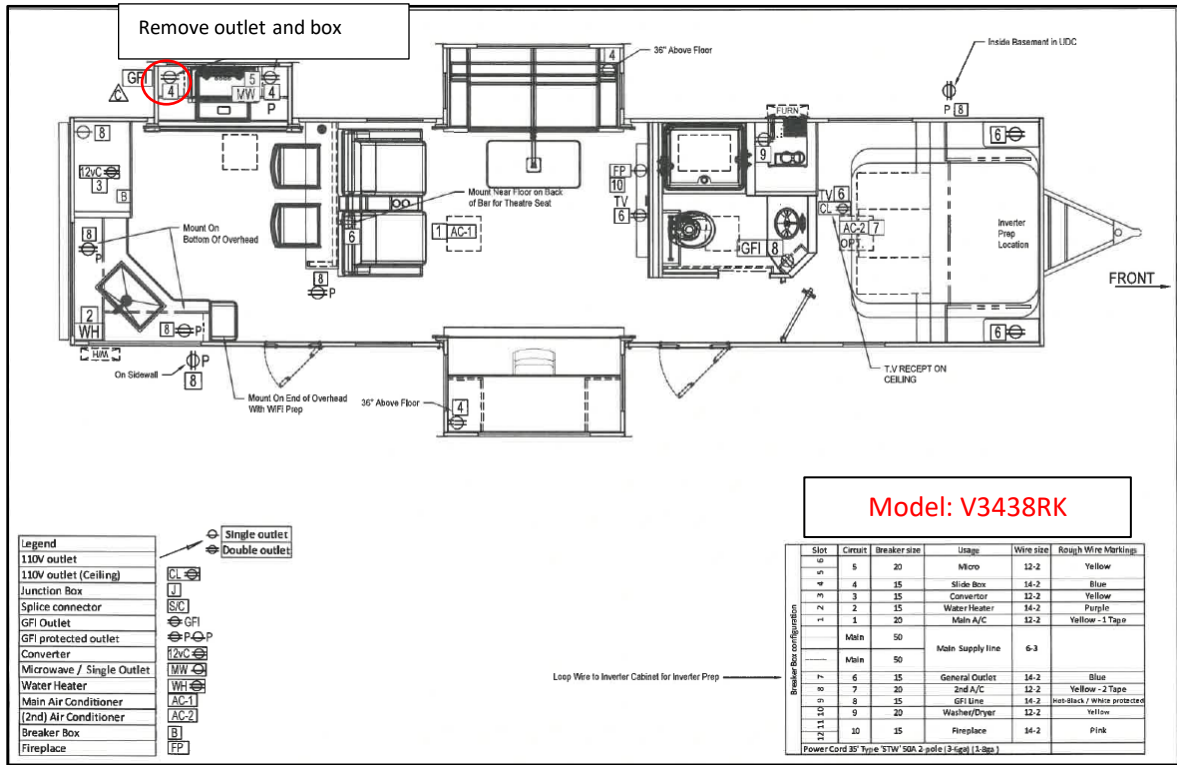
Vacuum Cleaner

Repair Instructions:

- 1) Check receptacles with GFCI tester.
- 2) Disconnect shore power & turn off battery disconnect switch **OR** turn off #4 Breaker (Slide-Box)
- 3) Remove receptacle from hole. (see prints on the following pages for location information)
- 4) Reconnect shore power & turn on battery disconnect switch **OR** turn on number #4 Breaker (Slide-Box)
*Make note of hot line for receptacle install with non-contact AC Voltage Detector and **REPEAT STEP 2.**

WARNING: FAILURE TO FOLLOW INSTRUCTIONS MAY RESULT IN ELECTRICAL SHOCK.

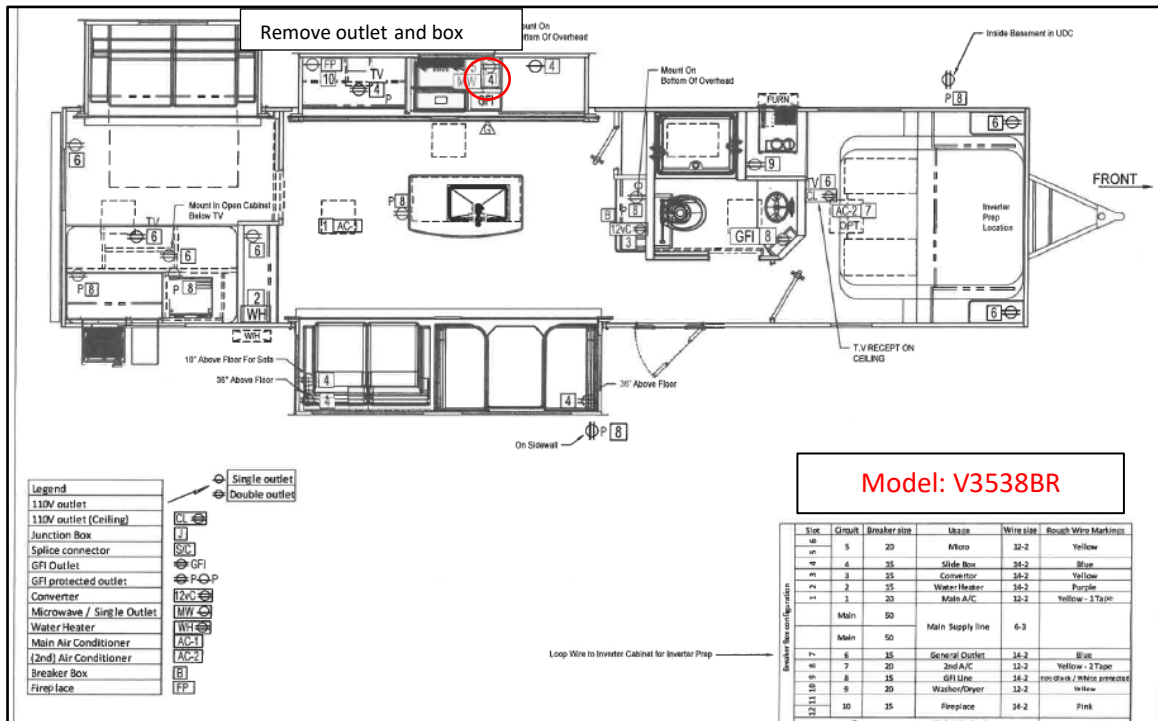




201 14th Street, Middlebury, In 46540

Phone: 574-825-8052, wtowWarrantyTech@winnebagoind.com

Winnebago.com



- 5) Change hole size to $2\frac{1}{2}'' \times 3\frac{3}{4}''$.
- 6) Cut Romex in half.
- 7) Insert Romex ends in through the back side of the electrical box pulling around 6'' out of the front of the box.



- 8) Install electrical box into new hole size (note may have to remove panel before installing box to panel)



9) Install new receptacle & cover plate.



10) Turn power back on and test receptacle.





NHTSA: 24V-618
Transport Canada: TC2024-479
Winnebago Towable: CAM0000038

Safety Recall:
 Non-GFCI Outlet Installed – Access 25ML

Repair, Claim Preparation, and Filing Instructions

Please submit a warranty claim pre-authorization using the following codes and labor times:

LABOR:	OPERATION CODE	LABOR ALLOWANCE
---------------	-----------------------	------------------------

Remove and Replace:	44016601	0.30 / per outlet
----------------------------	----------	-------------------

Parts:

WGO RECALL KIT # 283344

Please follow attached repair instructions.

Submit all pre-authorizations and claims through the Dealer Portal. If there are any questions, please call our Warranty Team at 574-825-5250.

Repair Instructions:

Non-GFCI Outlet Installed – Access 25ML

Tools Needed:

Screw Gun with Philips & Square Bit

Stanley Knife or Small Saw with Wood Blade

Wire Cutter/Strippers

GFCI Receptacle Tester

Vacuum Cleaner

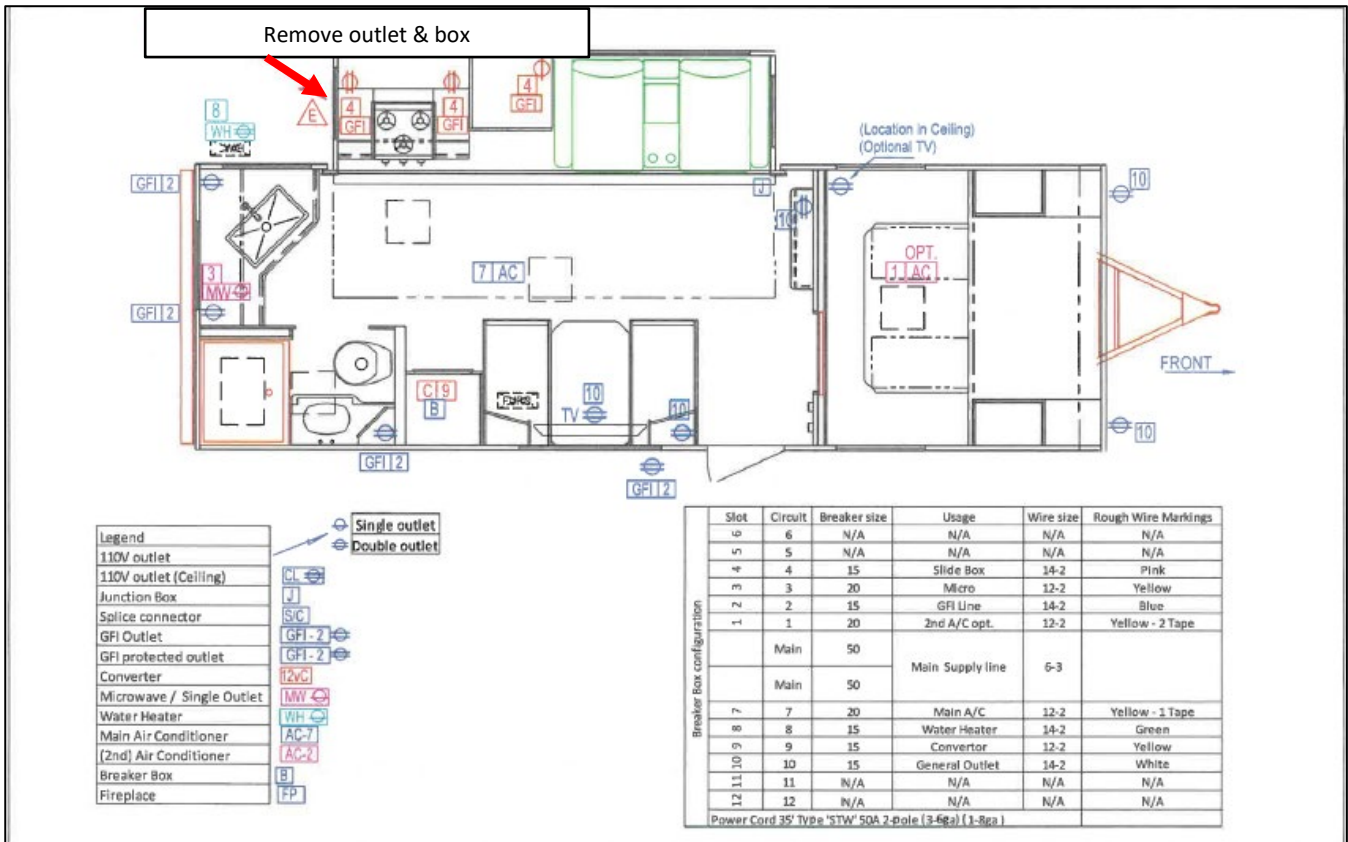
Non-Contact AC Voltage Detector

Repair Instructions:

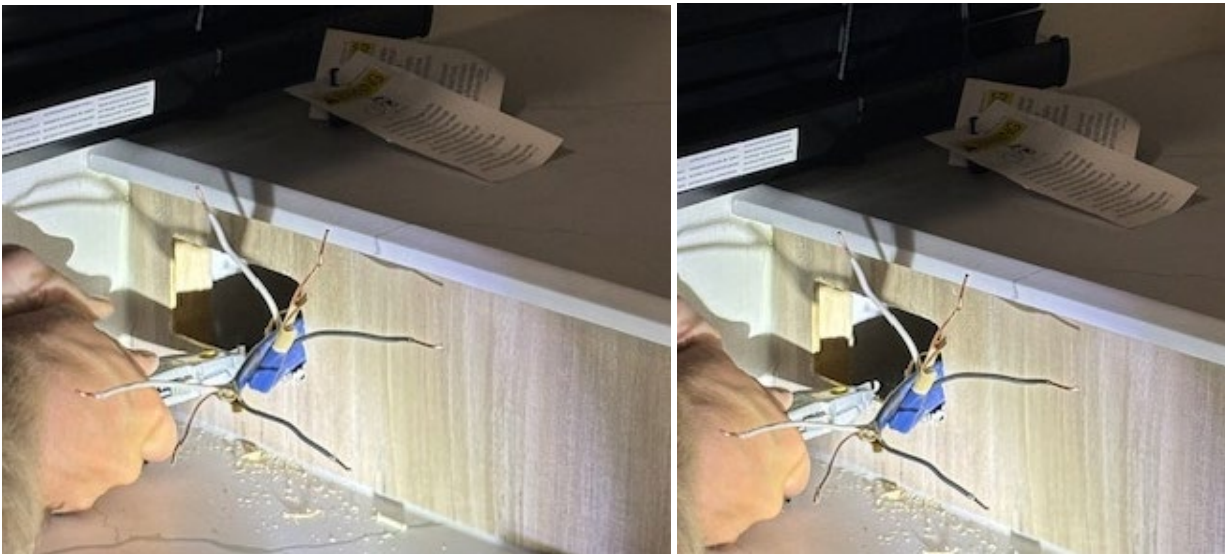
- 1) Check receptacle with GFCI tester.
- 2) Disconnect shore power & turn off battery disconnect switch **OR** turn off number #4 Breaker (Slide-Box)
- 3) Remove receptacle from hole. (see print on next page for location information)

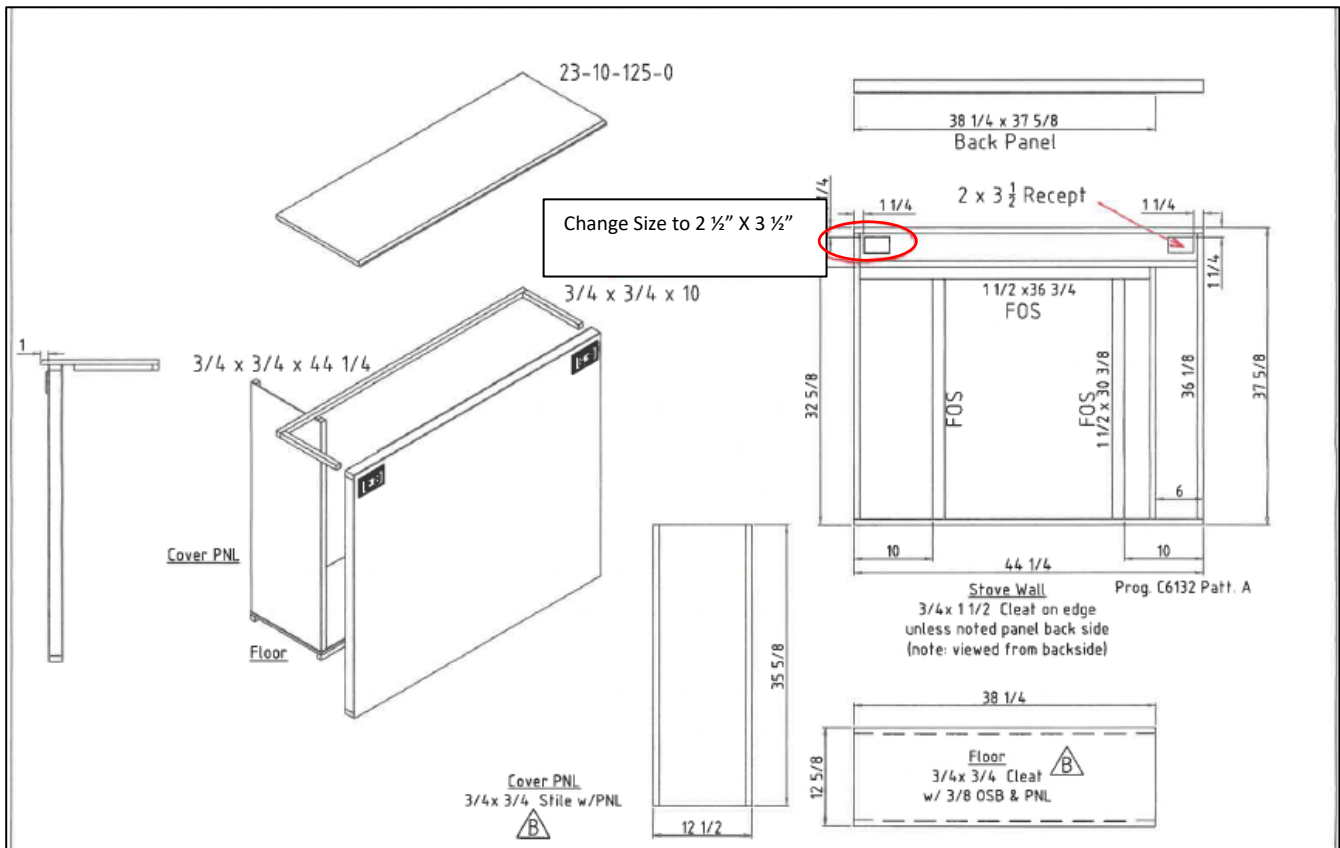


- 4) Reconnect shore power & turn on battery disconnect switch **OR** turn on number #4 Breaker (Slide-Box) *Make note of hot line for receptacle install with non-contact AC Voltage Detector and **REPEAT STEP 2. WARNING: FAILURE TO FOLLOW INSTRUCTIONS MAY RESULT IN ELECTRICAL SHOCK.**



5) Change hole size from 2" x 3 1/2" to 2 1/2" x 3 1/2". (note see print on next page)





6) Cut Romex in half.

7) Insert Romex ends in through the back side of the electrical box pulling around 6" out the front of the box.



8) Install electrical box into new hole size.



9) Install new receptacle & cover plate.



10) Turn power back on and test receptacle.

