

Safety Recall: 2024 ZDX EBCM Software Update

AFFECTED VEHICLES

Year	Model	Trim Level	VIN Range
2024	ZDX	ALL except 2WD models	Check the iN VIN status for eligibility.

BACKGROUND

During certain braking events below 25 mph on dry surfaces, the vehicle may exhibit overly sensitive anti-lock braking system (ABS) control. In these conditions, if the ABS falsely activates and a specific sequence of wheel movements occurs, the vehicle's ABS system will continue to release the braking pressure in the vehicle's service brake system. A release of braking pressure can cause the service brakes to have reduced stopping performance or become inoperative, increasing the risk of a crash.

CLIENT NOTIFICATION

Owners of affected vehicles will be sent a notification of this campaign. Perform a iN VIN status inquiry to make sure the vehicle is shown as eligible.

Some vehicles affected by this campaign may be in your new or used vehicle inventory.

Failure to repair a vehicle subject to a recall or campaign may subject your dealership to claims or lawsuits from the client or anyone else harmed as a result of such failure. Before selling a vehicle in inventory, always check if it is affected by a safety recall by performing a VIN status inquiry.

CORRECTIVE ACTION

Update the software in the vehicle's electronic brake control module (EBCM) to correct the condition. Owners who have accepted applicable terms and conditions will have the opportunity to accept these software changes using wireless over-the-air (OTA) technology without having to bring their vehicle to a dealership. Vehicles that have completed the update via OTA will be marked as complete.

For vehicles that are not able to complete the update via OTA, the update can be applied using Techline Connect (TLC) and the Multiple Diagnostic Interface 2 (MDI2).

CLIENT INFORMATION: The information in this bulletin is intended for use only by skilled technicians who have the proper tools, equipment, and training to correctly and safely maintain your vehicle. These procedures should not be attempted by "do-it-yourselfers," and you should not assume this bulletin applies to your vehicle, or that your vehicle has the condition described. To determine whether this information applies, contact an authorized Acura automobile dealer.

TOOL INFORMATION

Tool Name	Part Number	Quantity
TECHLINE CONNECT (TLC) Software APPLICATION TOOL WITH ACURA DIAGNOSTIC PACKAGE	N/A	N/A
Multiple Diagnostic Interface 2 (MDI2)	07-EL-52100	1
DCA-8000 Dynamic Diagnostic Charging System	MTRDCA8000PA	1

NOTE: Please make sure you have the Techline Connect (TLC) software application tool with Acura Diagnostic Package installed on your computer.

WARRANTY CLAIM INFORMATION

Operation Number	Description	Flat Rate Time	Defect Code	Symptom Code	Template ID	Failed Part Number
4135A3	Verified Module Software or Calibration Level: Module is Programmed with Same Level Software or Calibration	0.2 hr	6BZ00	UJE00	B24050A	86531509
4135A6	Brake System Control Module Reprogramming with SPS2	0.3 hr			B24050B	

NOTE: When submitting the warranty claim, attach the PDF generated when the software update was completed.

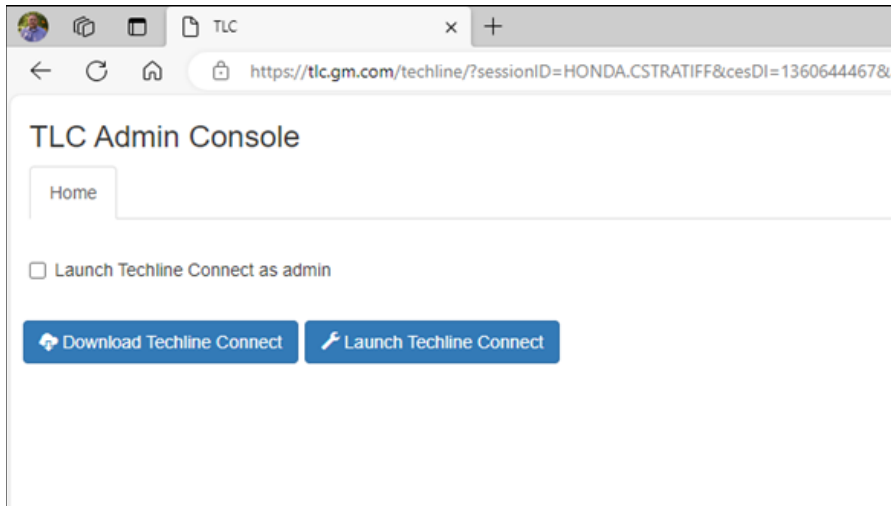
REPAIR PROCEDURE

NOTE:

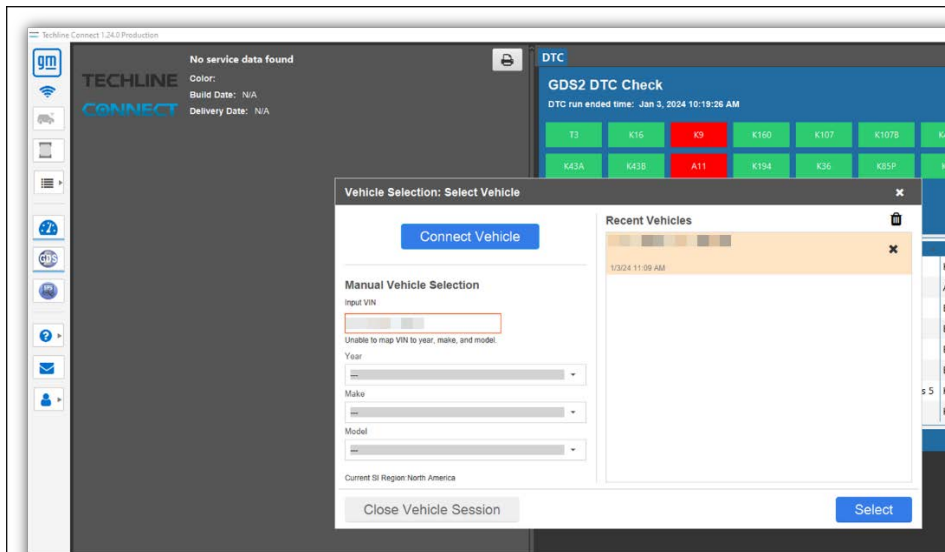
- Ensure the programming tool is equipped with the latest software and is securely connected to the data link connector. If there is an interruption during programming, a programming failure or control module damage may occur.
 - Stable battery voltage is critical during programming. Any fluctuation, spiking, over voltage or loss of voltage will interrupt programming. Use a DCA-8000 in Reflash mode.
 - Follow the on-screen prompts regarding ignition power mode but ensure that anything that drains excessive power (exterior lights, HVAC blower motor, etc.) is off.
 - Clear DTCs after programming is complete. Clearing powertrain DTCs will set the Inspection/Maintenance (I/M) system status indicator to NO.
- Important:** Verify that the VIN displayed in the TLC left side drop down menu and the top center window match the VIN of the vehicle to be programmed prior to using Service Programming System 2 (SPS2) for programming or reprogramming a module.
- If the VIN that shows up in the TLC top center window, after correctly reading the VIN from the vehicle, does not match the VIN of the vehicle, manually type the VIN characters from the vehicle VIN into the TLC top center window and use these for programming or reprogramming the subject module with the correct vehicle VIN and software and/or calibrations.
 - The Body Control Module (BCM) is the primary module that TLC reads to determine the VIN of the vehicle. If the VIN read from the vehicle by TLC does not match the VIN of the vehicle, the BCM may need to be reprogrammed with the correct VIN, software and calibrations that match the vehicle's VIN.
 - Make sure to complete the following self-studies prior to doing the software update:
 - ZDX10 – *MDI 2 Introduction and Familiarization*
 - ZDX11 – *Techline Connect Introduction and Overview*
 - ZDX12 – *Global Diagnostic System 2 Introduction and Navigation*

- Remove the front compartment rear access cover and the front compartment side sight shield.
 - *Front Compartment Side Sight Shield Replacement* ([Click HERE](#)).
- Connect a DCA-8000 to the 12-volt battery and set to Reflash mode.
NOTE: The factory installed 12-volt battery is an AGM 600 CCA 60Ah capacity.

- Open Techline Connect (TLC).
 - If TLC is not installed, follow the [TLC Quick Start Guide](#).
 - Ensure you are using the Acura Diagnostic package as described in the [TLC Quick Start Guide](#).



- Connect the MDI2 to your computer via USB.
- With the vehicle OFF, connect the MDI2 cable to the vehicle's data link connector (DLC).
NOTE:
 - There is no need to power on the vehicle at this time.
 - Ensure that the key remote is inside the vehicle and not moved for the duration of the programming.
- Open the Vehicle Selection section of TLC.
- Choose **Select Vehicle** from the left side menu, then choose **Connect Vehicle**.

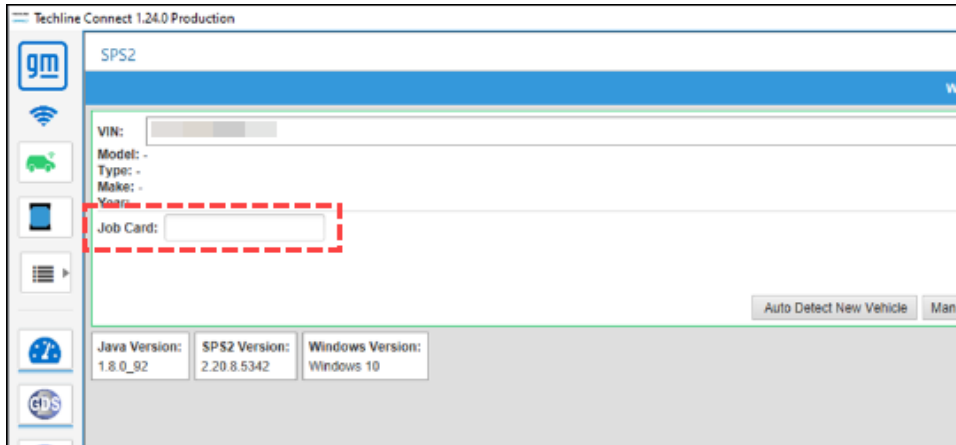


8. Launch SPS2 from the left side menu.

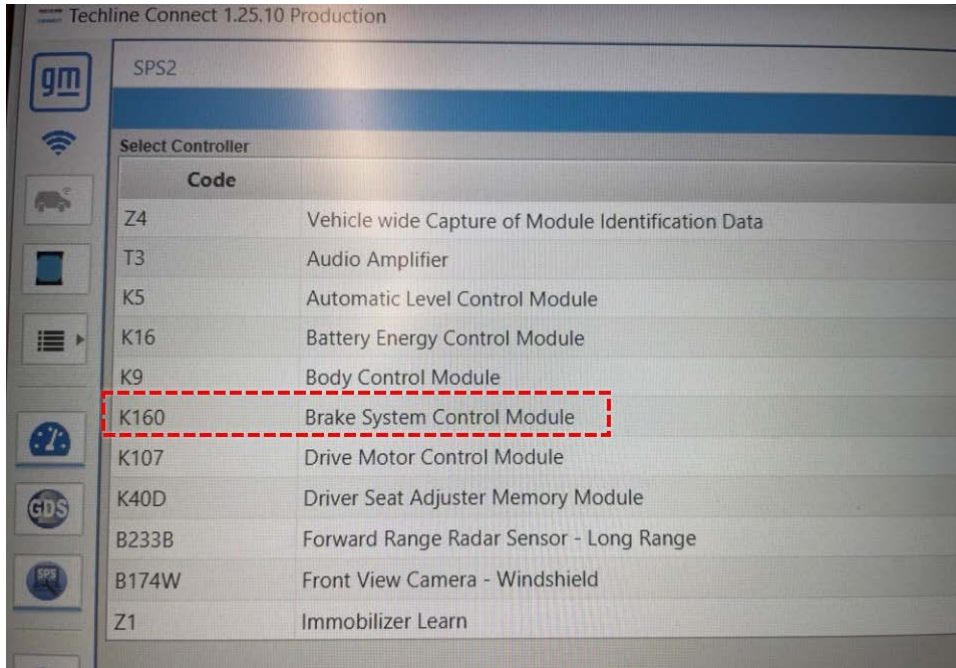
NOTE:

- SPS2 may automatically launch after selecting Connect Vehicle.
- Wait for SPS2 to finish reading vehicle data.

9. Enter the Repair Order Number in the Job Card field.



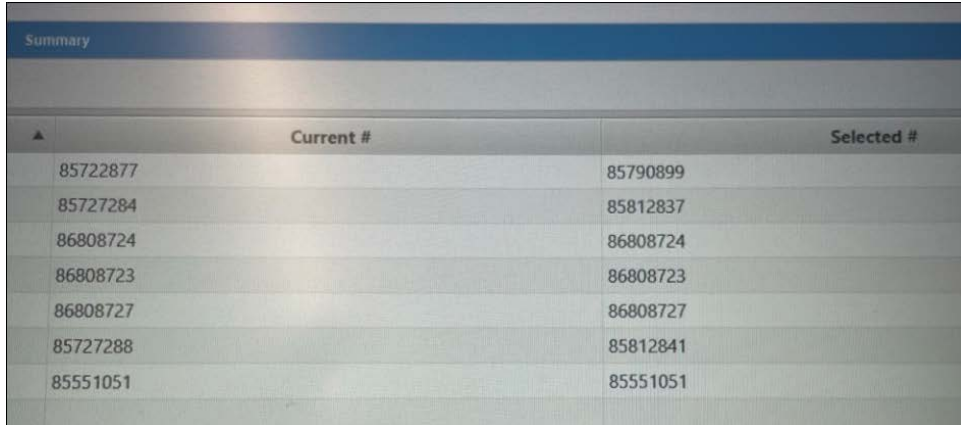
10. Select *K160 Brake System Control Module*, then select **Next** in the bottom right corner.



11. Compare all the Controller ID Current # with the Selected #. If any of the Current # do not match the Selected #, an update is needed.

NOTE:

- In rare cases the campaign may show as open on VIN Status Inquiry, but the Current # and Selected # all match.
- If all the Current # and Selected # match, the vehicle is up to date and no update is needed.
- Submit a warranty claim for Operation Number 4135A3 only.

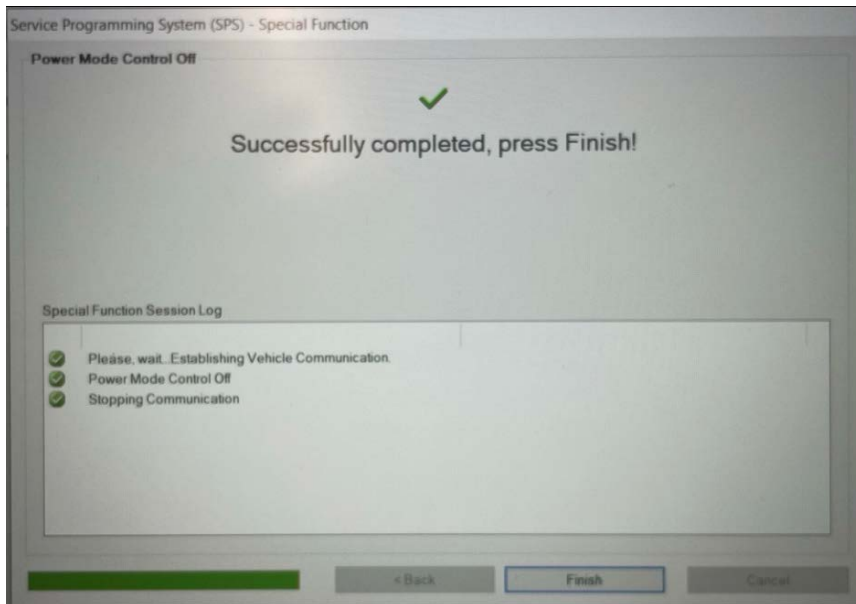


▲	Current #	Selected #
	85722877	85790899
	85727284	85812837
	86808724	86808724
	86808723	86808723
	86808727	86808727
	85727288	85812841
	85551051	85551051

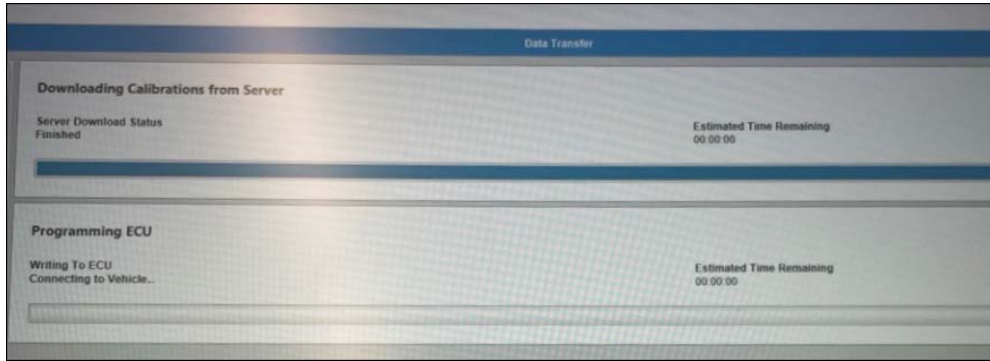
12. Select **Next** in the bottom right corner and TLC will automatically download the update.

NOTE: If all of the IDs match, an error message will appear stating “You are attempting to reprogram with the same calibration”.

13. A “Successfully Completed” message confirms the files are downloaded and ready to install.



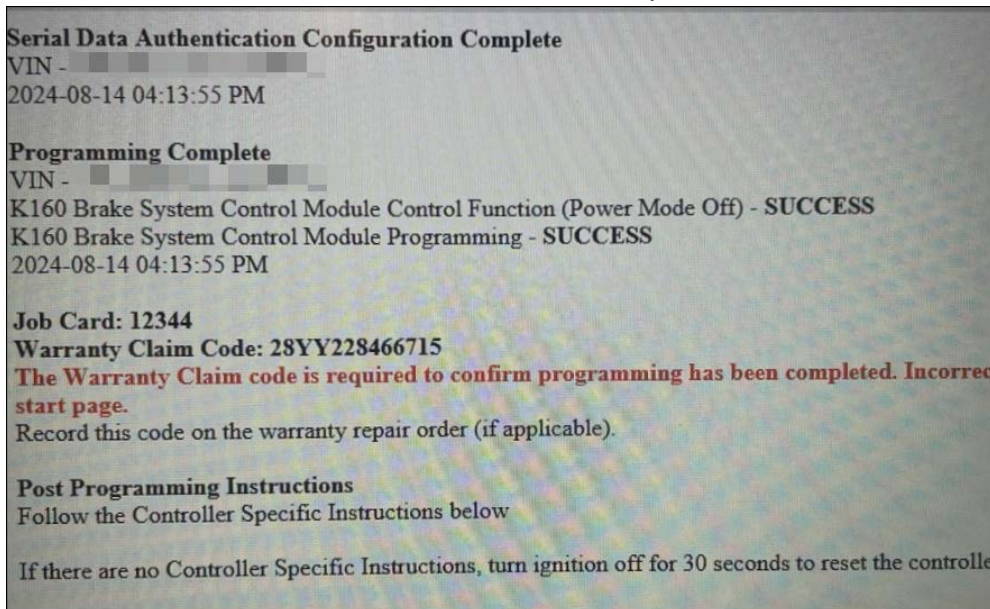
14. Select **Finish** to begin the installation process.



15. When the update has completed, you will be presented with a Warranty Claim Code screen. Choose **Print** at the bottom left to save a PDF of the Warranty Claim Code information.

NOTE

- The print window may open behind the TLC application.
- The PDF **will need** to be submitted for the warranty claim.



16. Select **Clear DTCs** on the bottom right to clear any DTCs that may have been created by performing the update.

17. Place the vehicle into Service Mode by holding the power button for **5 seconds**.

NOTE: **Do not** press the brake pedal while pressing the power button. This will put the vehicle in DRIVE mode.

18. From the left side menu, launch Global Diagnostic System 2 (GDS2).

19. Select **Vehicle Diagnostics**, then select **Enter** at the bottom right.

20. Wait for vehicle DTCs to be displayed, then click **Clear DTCs** to clear any DTCs created during the update process.