


# Recall Bulletin 240812REV



<b>RECALL BULLETIN:</b> <b>240812REV</b>	<p>The purpose of this Recall Service Bulletin is to inform REV Recreation Group dealers of the need to inspect and install a GFCI protection device on certain 2019-2025 Fleetwood: Flair, Flex, and Holiday Rambler: Admiral, Eclipse motorhomes. A list of affected motorhome serial numbers appears at the end of this bulletin. There are a total of 622 motorhomes affected by this recall.</p>
<b>YEAR(S) AFFECTED:</b> <b>2019-2025</b>	
<b>PRODUCT(S) AFFECTED:</b>  <u><b>FLEETWOOD</b></u> <b>FLAIR</b> <b>FLEX</b>  <u><b>HOLIDAY RAMBLER</b></u> <b>ADMIRAL</b> <b>ECLIPSE</b>	<p><b><u>CONDITION:</u></b>                  On motorhomes affected by this recall campaign the exterior patio electrical receptacle can be energized by inverter power, shore power or generator power. Only the inverter power source provides Ground Fault Circuit Interruption (GFCI) protection for the receptacle. The receptacle is not GFCI protected when energized by shore cord power or generator power. Without GFCI protection a ground fault may occur when someone is in contact with a live circuit while in wet or damp conditions. Risks of personal injury or death may occur.</p>
<b>MONTHS OF MANUFACTURE:</b> <b>JULY 26, 2018 -</b> <b>MAY 21, 2024</b>	<p><b><u>DEALER CORRECTIVE ACTION:</u></b>                  Follow the attached repair bulletin to install a GFCI protection device on certain vehicles built between July 26, 2018, and May 21, 2024.</p> <p><b>ATTENTION SERVICE, WARRANTY AND PARTS MANAGERS:</b>  <b>All prior Authorization Approvals must go through REV RV Dealer Technical Support (800) 816-9825</b></p>
<b>MODEL(S) AFFECTED:</b> <b>34J 35R 33B6</b>	<p><b><u>WARRANTY LABOR ALLOWANCE</u></b></p> <p> Recall 240812REV GFCI Receptacle (Prior Authorization &amp; Repair Photos are Required)</p>
<b>SUBJECT:</b> <b>Ground Fault Circuit Interruption (GFCI)</b>	<p><b>Use Flat Rate Codes: 6319 11 Inspected/Non-Defective</b>  <b>Time Allowed: .1 hr.</b>  <b>Use Flat Rate Codes: 6319 12 Inspected/Defective/Repaired</b>  <b>Time Allowed: .75 hr.</b></p>
<b>ISSUED:</b> <b>OCTOBER 2024</b>	<p><b><u>RECALL KIT PARTS:</u></b></p> <ul style="list-style-type: none"> <li><b>GFCI Receptacle KIT must be ordered from <a href="http://revrvparts.com">revrvparts.com</a> OR CALL REV Parts (800) 509-3417</b></li> </ul> <p><b><u>Kit # 10903320</u></b></p>
<p>2024 REV Recreation Group, Inc.</p>	<p><b>Recall kit includes: Pre-made GFCI Receptacle</b></p> <p><b>**READ THE FOLLOWING BULLETIN CAREFULLY**</b></p> <p><b>NOTE: PRINT PAGES 1-8 FOR REPAIR PROCEDURE ONLY</b></p>

Federal law (section 154 of the national traffic and motor vehicle safety act of 1966) requires that: If you have received a notice of recall or failure to comply from REV Recreation Group or any component Manufacturer, you must repair or otherwise correct the defects on vehicles remaining in your inventory, according to the notification, before selling or leasing the vehicles. Any vehicle lessor receiving this recall notice must forward a copy of the notice to the lessee within ten days.

"It is impossible to know, evaluate and advise the service trade of all conceivable ways in which service might be done or of the possible hazardous consequences of each way. Accordingly, anyone who uses a service procedure or tool must first assure that neither personal safety nor vehicle safety will be jeopardized by the selected service methods."

*This bulletin is supplied for technical information only and is not an authorization for repair.*

## PRE-REPAIR INSPECTION:

- Use industry safety precautions while performing this recall.
- Park the motorhome on a dry, level paved surface. Place the transmission into park and engage the parking brake.
- Turn off the ignition and remove the keys. Maintain control of the keys until all repairs are performed.
- Chock the wheels to prevent movement.

## REPAIR PROCEDURE:

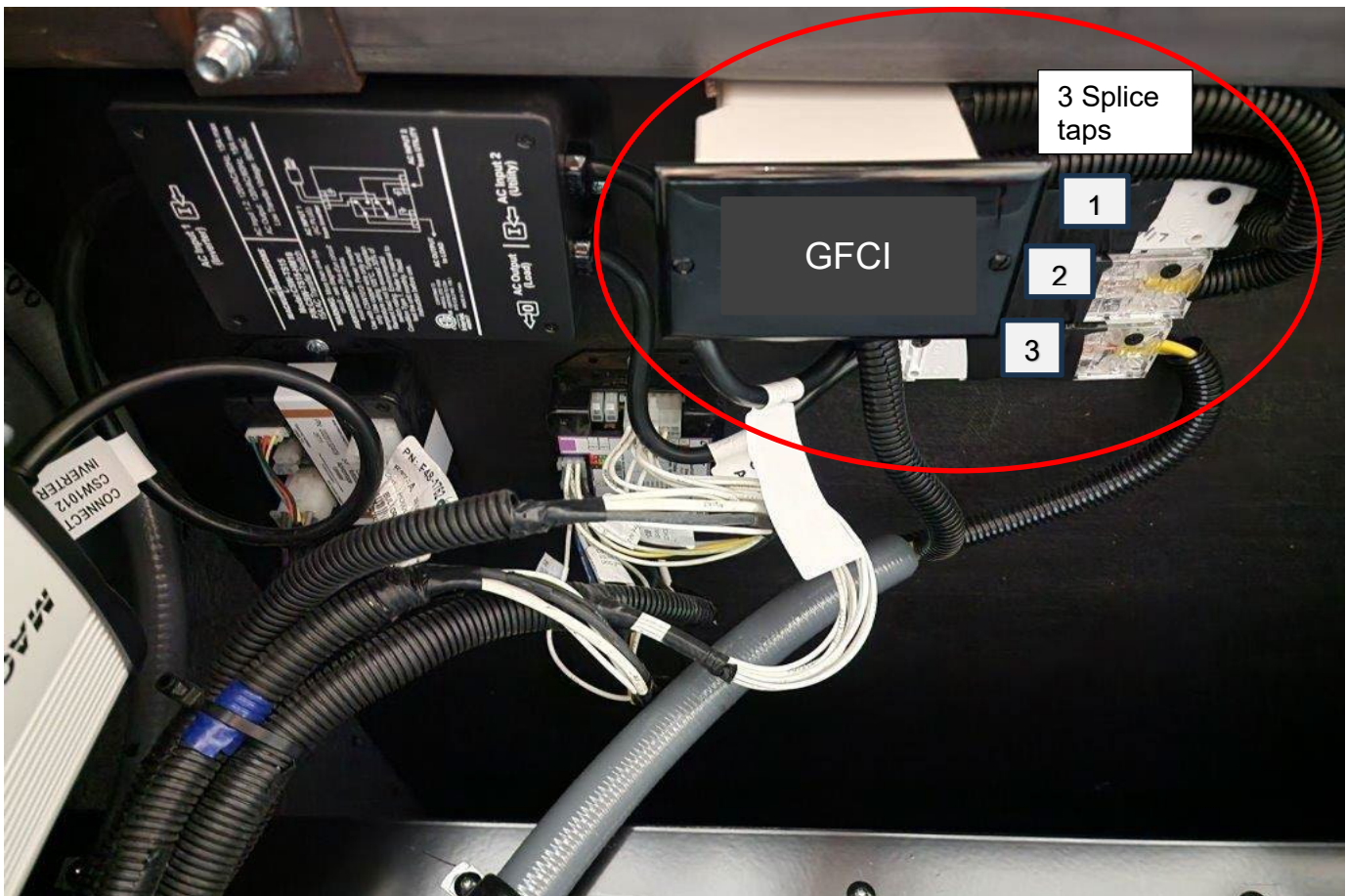
The objective of this procedure is to add GFCI to the patio receptacle when using Generator and Shore power.

1) First locate the inverter / transfer switch, located in basement area, secured to the side of a compartment.

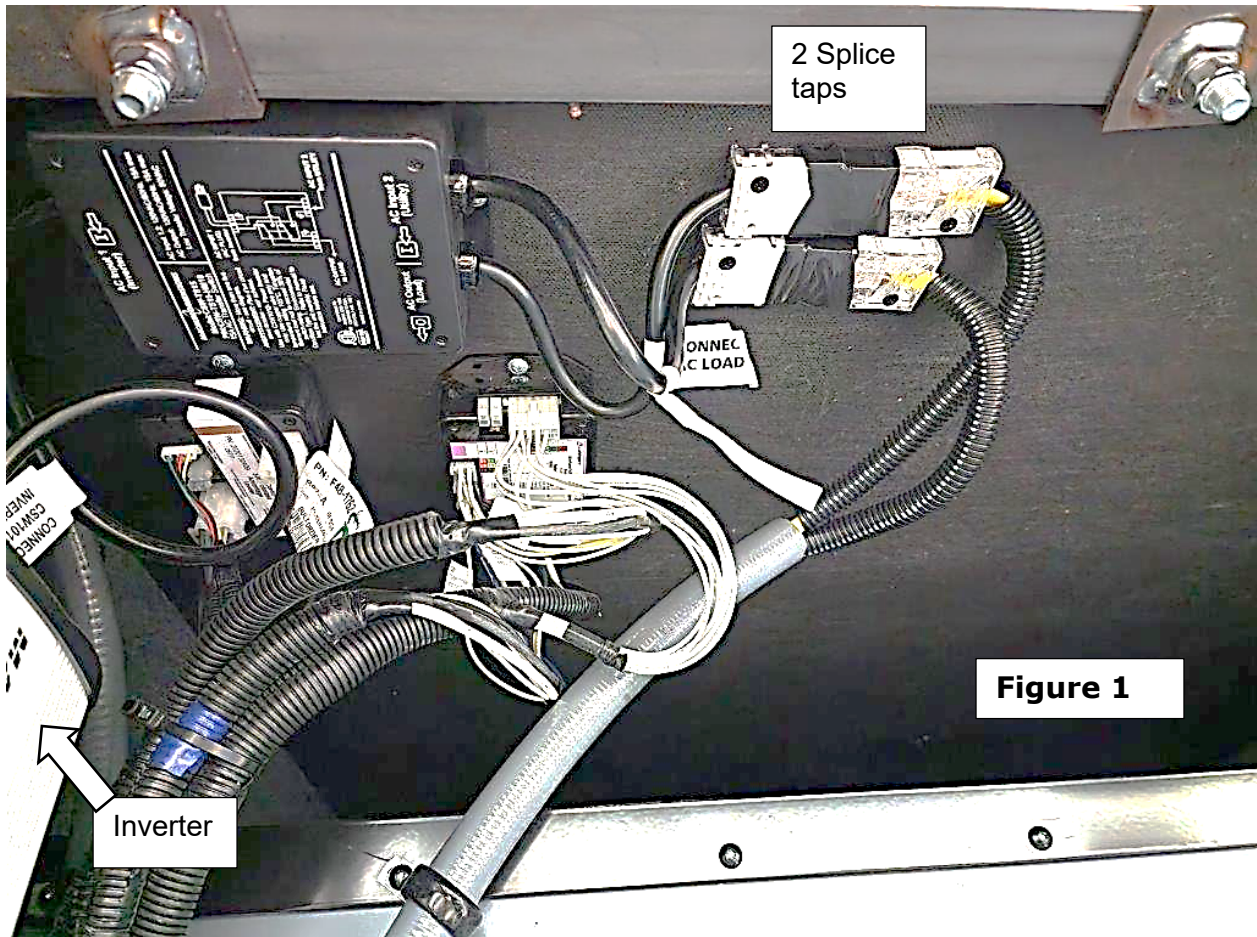
1A) If a GFCI receptacle and 3 sets of splice taps are present (**see photo below**) take a picture and submit with a claim using **Flat Rate Code 6319 11 Inspected/Non-Defective**.

1B) If GFCI is not located in the designated area, proceed with the repair outlined below starting on page 3.

### Example of what you will see if Inspected/Non-defective



**Example of what you will see if unit needs repaired.**



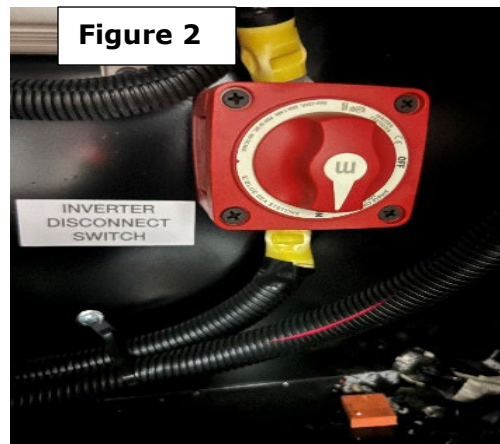
**Note:** On the 34J and 33B6 model motor homes, the inverter is in the compartment in front of the entry door. On the 35R model the inverter is in the compartment behind the entry door.

- 2) Use Caution - Test the system – with coach plugged into shore power, open the exterior TV door and locate the receptacle in the compartment. Using GFCI tester, plug into receptacle and see if the tester will trip the GFCI receptacle. If the test does not trip the GFCI, proceed with the repair procedure below. Look to determine if the GFCI receptacle is already located near the inverter. If the GFCI trips or if you have questions, contact **Dealer Tech 800-816-9825**



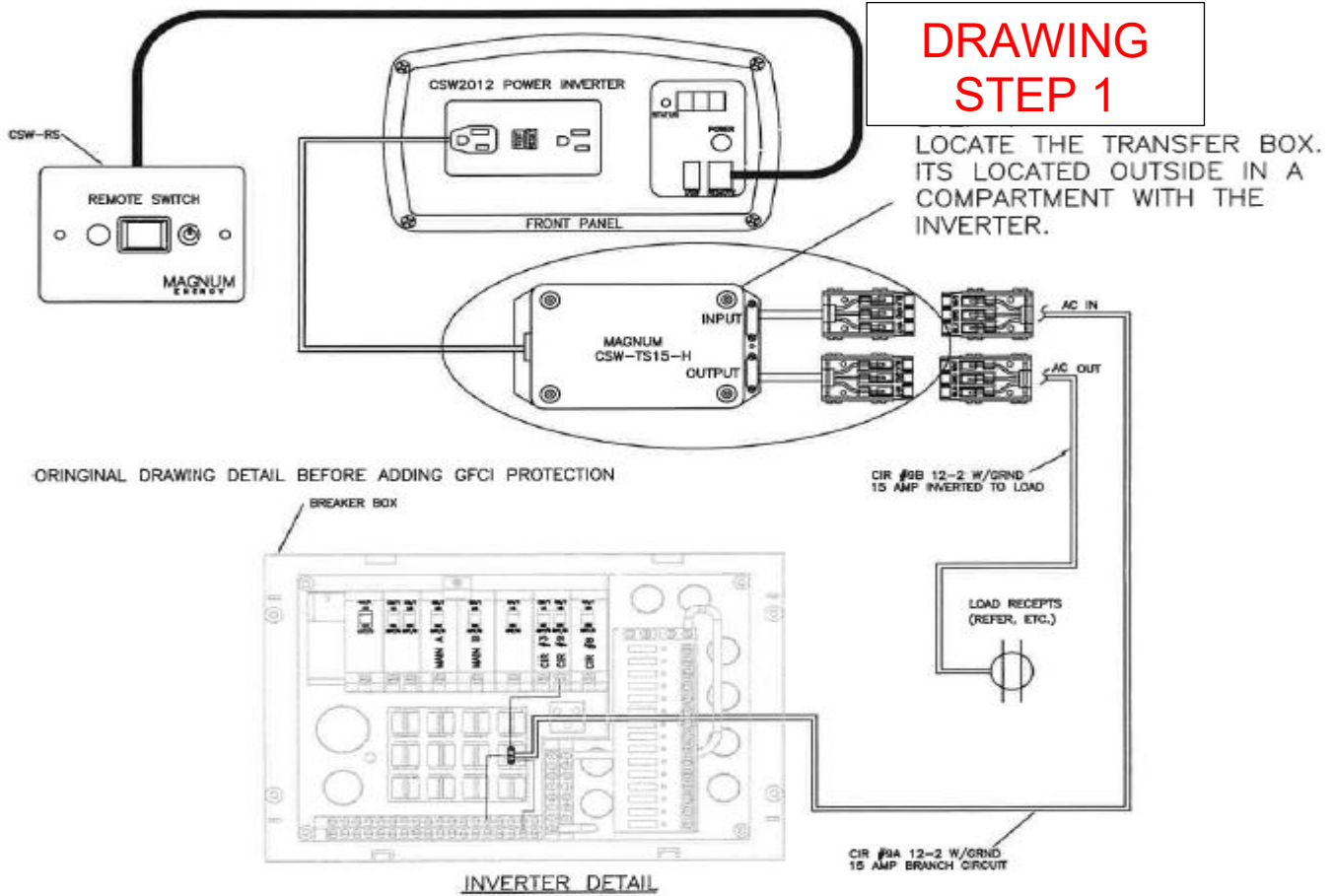
Unplug the motor home from shore power shop receptacle.

- 3) Make sure the generator is off and disabled.
- 4) Find inverter remote switch (located in entry way area) and turn off the inverter.
- 5) Locate the inverter and turn off the rotary disconnect switch going to inverter, **see figure 2.**

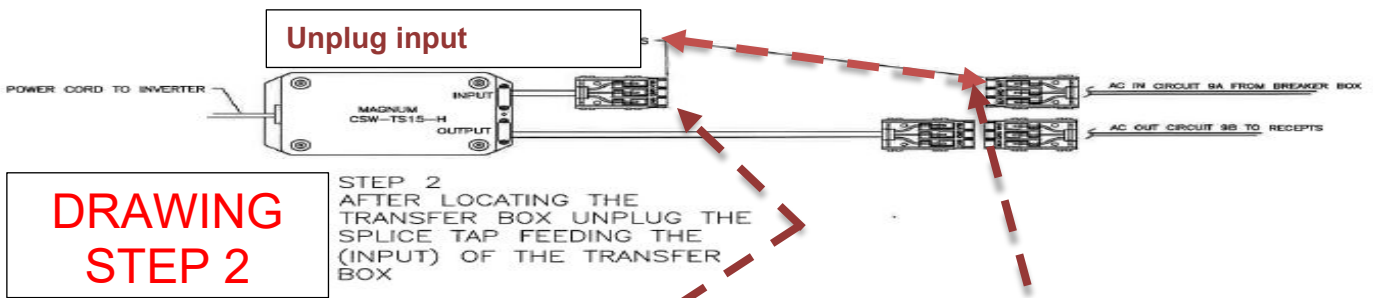


- 6) Locate transfer switch near the inverter, mounted on ceiling of basement compartment, and locate the splice taps that are connected to the transfer switch. **See figure 1 on page 2.**
- 7) Remove the mounting screws and separate the existing splice tap that is feeding the transfer switch from the breaker box circuit 9A. This will be connected to the "AC Input 2 (utility)" of the transfer switch. **See Drawing Step 1,2, 3 and 4** pages 4 and 5.

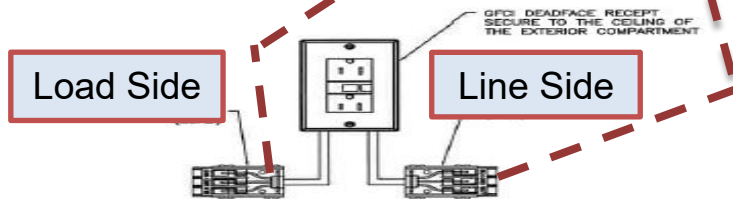
# DRAWING STEP 1



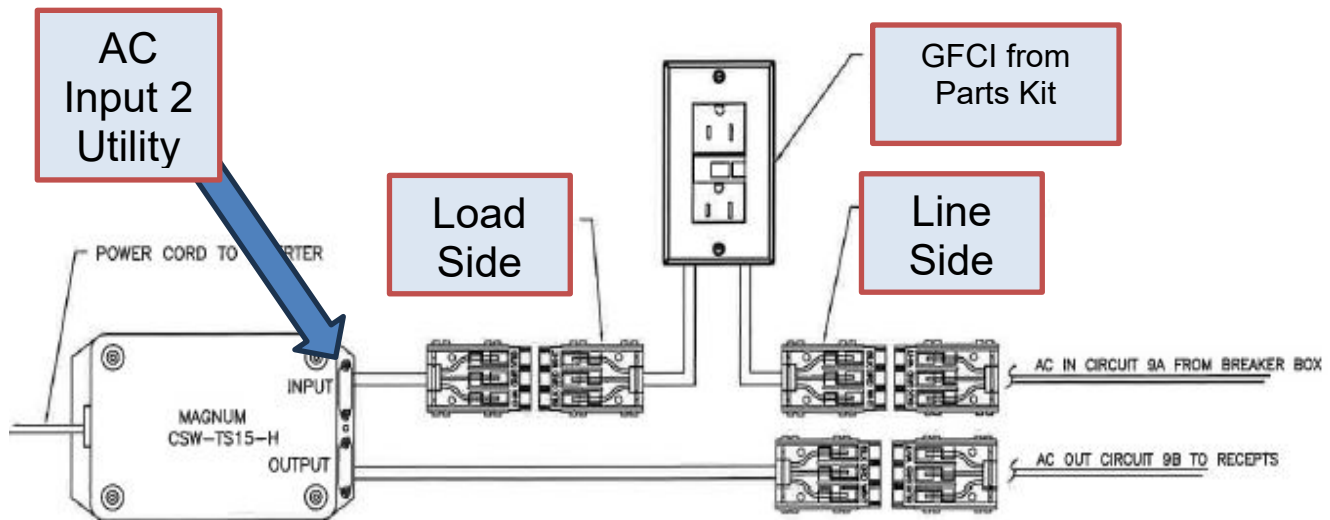
# DRAWING STEP 2



# DRAWING STEP 3



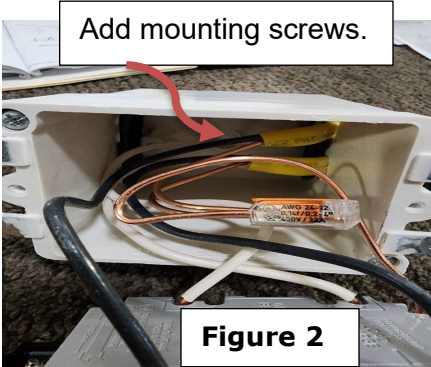
STEP 3 GET THE DEADFACE GFCI ASSEMBLY IN-HAND, AND LOCATE THE TWO SPLICE TAPS, ONE MARKED (LINE), AND THE OTHER MARKED (LOAD).



**DRAWING  
STEP 4**

STEP 4.  
CONNECT THE DEADFACE GFCI ASSEMBLY BETWEEN THE TWO SPLICE TAPS YOU SEPERATED IN STEP 2.  
A. SPLICE TAP MARKED (LINE) CONNECTS TO THE SPLICE TAP GOING TO CIRCUIT 9A FROM THE BREAKER BOX.  
B. SPLICE TAP MARKED (LOAD) CONNECTS TO THE SPLICE TAP GOING TO THE INPUT OF THE TRANSFER BOX.

- 8) Once the splice taps are connected, apply electrical tape to the splice tap to ensure proper connection and mount the splice taps to the compartment ceiling as previously shown with screws obtained locally.
- 9) Locate the J- Box and mount it to the compartment ceiling in a manner as to minimize obstruction of the pass-through storage with screws obtained locally.  
**See figure 2**



- 10) Install the receptable and face plate.
- 11) Secure the wires to the floor structure within 6 inches of the connections with wire ties and screws obtained locally.

- 12) Plug coach back into shore power.
- 13) Open the exterior TV compartment and locate the receptacle in compartment. Using GFCI tester, plug into receptacle and check for polarity, see if the tester will trip a GFCI receptacle. **See figure 3** Reset the dead face GFCI. If the GFCI does NOT trip review the procedure and check your wiring connections or contact Dealer Tech



- 14) Unplug coach from shore power.
- 15) Turn on the rotary disconnect switch going to inverter. Turn on the inverter remote switch.
- 16) Test the receptacle in TV compartment by using GFCI tester. Plug tester into receptacle and see if the tester will trip a GFCI receptacle on the inverter. **See figure 3** If it trips, reset the GFCI on the inverter. If the GFCI does NOT trip review the procedure and check your wiring connections or contact Dealer Tech.
- 17) Once testing is complete make sure the area is clean and restore the contents.



## WARRANTY LABOR ALLOWANCE:

**Recall 240812REV GFCI Receptacle (Prior Authorization & Repair Photos are Required)**

**Flat Rate Code: 6319 11 Inspected/Non-Defective      Time Allowed: .1 hr.**

**Flat Rate Code: 6319 12 Inspected/Defective/Repaired Time Allowed: .75 hr.**

### TOOLS AND PPE

Driver/ Phillips bit,  
Standard screwdriver  
GFCI tester  
Knife

**PARTS NEEDED - KIT # 10903320 must be ordered from [revrvparts.com](http://revrvparts.com) OR CALL  
REV Parts (800) 509-3417**

#### **Kit includes:**

Pre-made GFCI Receptacle

#### **Shop Supplies - Obtain Locally**

Electrical tape  
Wire ties  
10 ea. 1 ¼" hi-low Tek screws

**ALL APPROVALS, and CLAIM PAYMENTS must go through REV RV Technical Support at (800) 816-9825.**

**NOTE: PRINT PAGES 1-8 FOR REPAIR PROCEDURE ONLY**

**\*\*\*\*\*UNIT LIST POPULATION STARTING ON PAGE 9\*\*\*\*\***