

Recall Repair Instructions

NHTSA Recall # 24V-566

Transport Canada Recall # 2024-436

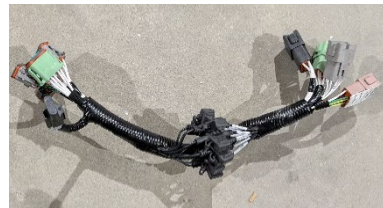
Tiffin Motorhomes Recall # TIF-141

Models Involved: 2022 – 2025 Allegro Bus, Phaeton and Zephyr Motorhomes, built on PowerGlide chassis ONLY.

Purpose: To provide instructions on how to add circuit protection harness part number 5165258 to the IFM controller to protect power to the ignition circuit. **NOTE:** Verify on tiffinmotorhomes.com recall look up which harness should be installed on the VIN of the motorhome in for repair.

Parts Needed:

1 of 5165258, shown here:



FLAT RATE CODE & TIME ALLOWED *When filing the warranty claim for payment, please use the appropriate flat rate code.*

988FRC01 to inspect controller on units not involved in recall, 0.10 hrs.

9885RC01 to install harness on IFM controller, 0.25 hrs.

No authorization is required for work completed at the flat rate times stated on the work instructions.

Use **"TIF141"** as the authorization on claim for payment.

Inspection Procedure:

1. Open passenger side rear compartment and visually inspect the chassis control module. Controllers that are not the IFM brand (Figure 1a& 1b) are not involved. No further action is needed. File the warranty claim using the inspection only flat rate code above.

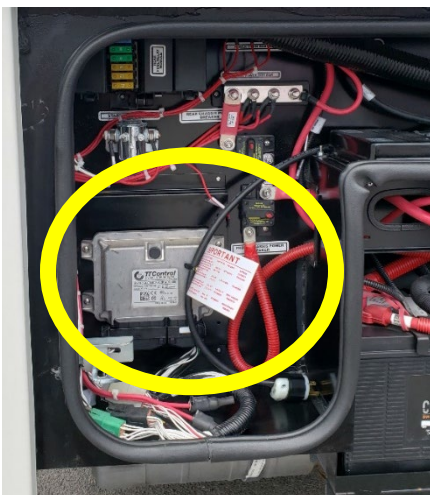


Figure 1a



Figure 1b

2. If the chassis has an IFM Controller, shown in figures 2a, 2b & 2c, please proceed with repair instructions.



Figure 2a

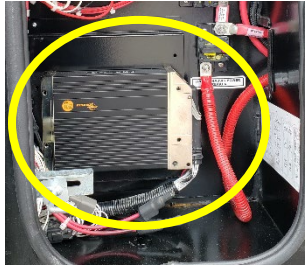


Figure 2b



Figure 2c

Repair Instructions

1. Turn off the chassis power switch, see figure 3a. For Allegro Bus and Zephyr motorhomes, the chassis power disconnect is in the last passenger side compartment; but on Phaeton Chassis, it is in the 2nd to last compartment, see figure 3b.



Figure 3a

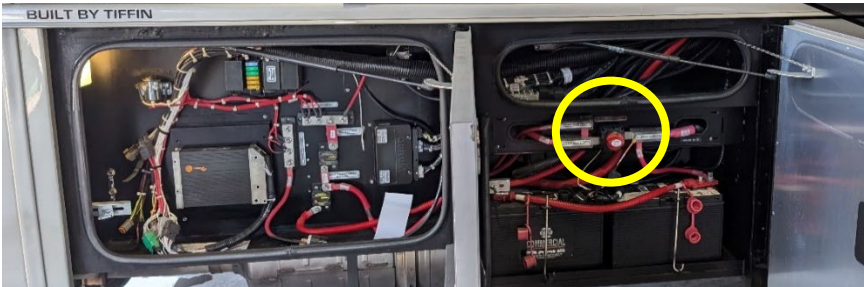


Figure 3b

2. Locate the connection plugs on the chassis power harness, see figure 4.

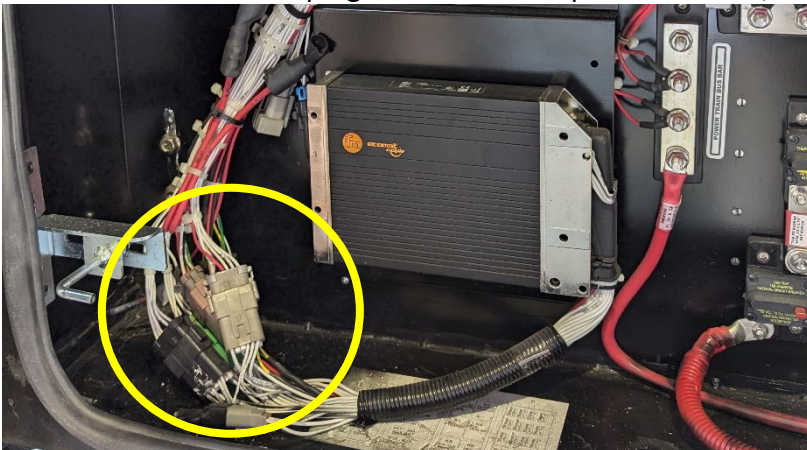


Figure 4

3. Disconnect and reconnect the harness connections one at a time to install the recall harness into the correct plugs, matching plug colors to install the harness correctly, see figures 5a, 5b, & 5c.



Figure 5a

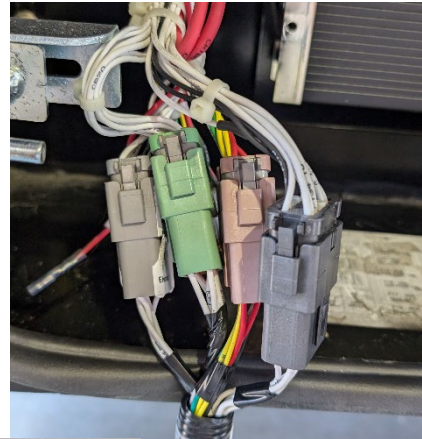


Figure 5b

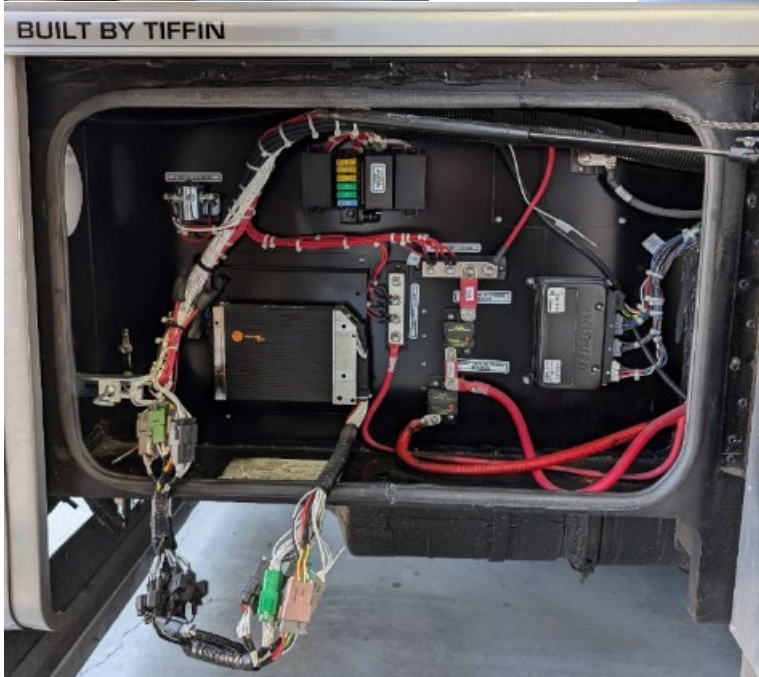


Figure 5c

4. Tuck the chassis wiring harness into the compartment, figure 6, and turn chassis power on.

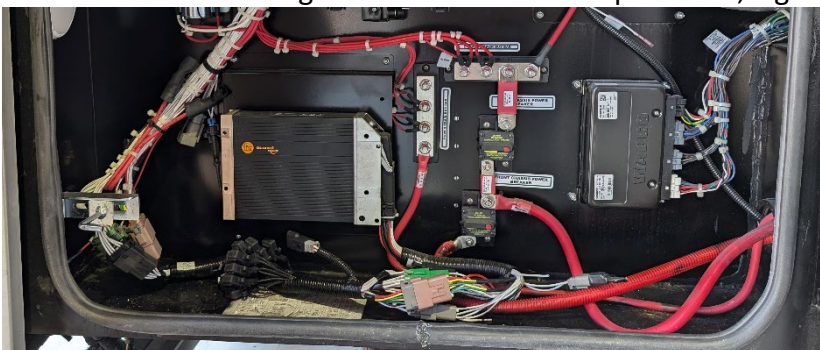


Figure 6