



HYUNDAI

Technical Service Bulletin

GROUP

RECALL

NUMBER

24-01-059CV

DATE

JULY 2024

MODEL(S)

XCIENT FCEV (QZ)

SUBJECT:

STEERING GEAR PITMAN ARM NUT RETIGHTENING
(RECALL 264)

★ IMPORTANT

Vehicle repairs related to safety recalls are critically important and must be performed properly in accordance with TSB procedures. Review this bulletin in its entirety prior to beginning any repair work.

As required by federal law, vehicles must not be delivered or leased until all open recalls have been performed.

Description: The pitman arm nut in the subject vehicles may have been insufficiently caulked at the steering gearbox connection, potentially allowing the nut securing the joint to loosen over time. Detachment of the pitman arm from the gearbox will result in a complete loss of steering, increasing the risk of a crash and injury to occupants and bystanders. This bulletin provides the procedure to retighten and caulk the pitman arm nut.

Applicable Vehicles (Certain): 2023MY Xcient FCEV (QZ)

Warranty Information:

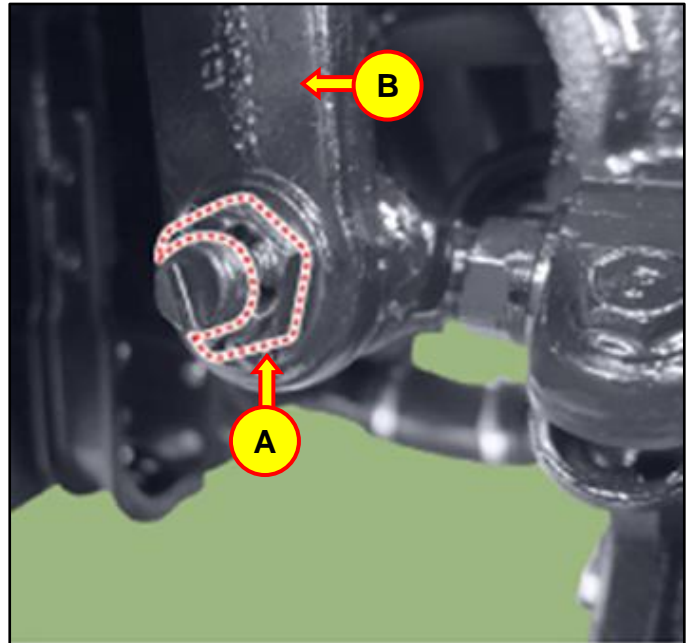
NOTE 1: Submit any manual billing to the responsible factory.

Service Procedure:

1. Lift the vehicle or place the vehicle in the pit.
2. Drag link removal:
 - If the vehicle is on the lift, remove the drag link nut (A) and drag link (B).
 - If the vehicle is in a pit, turn the steering wheel to the right then remove the drag link nut (A) and drag link (B).

Tightening Torque:

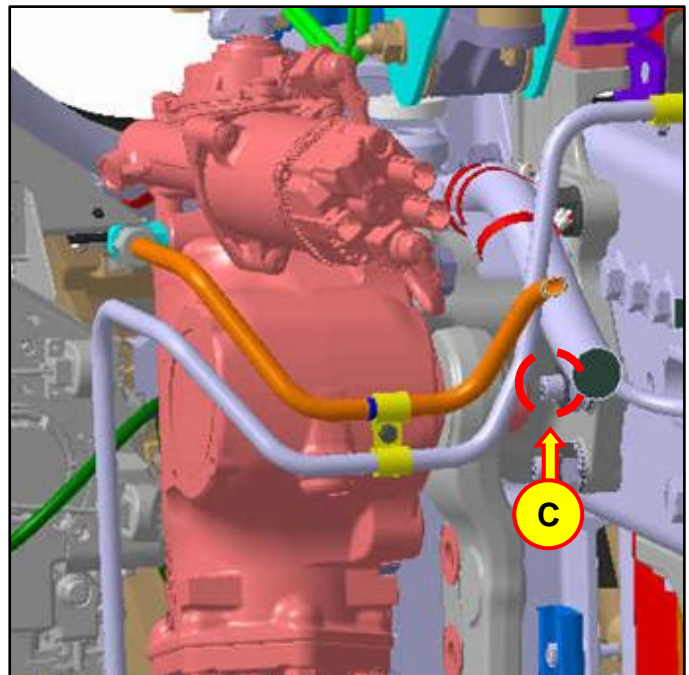
lb-ft	199 ± 11
N.m	270 ± 15



3. Remove the mounting bracket nut (C) to ensure more room to retighten the pitman arm nut.

Tightening Torque:

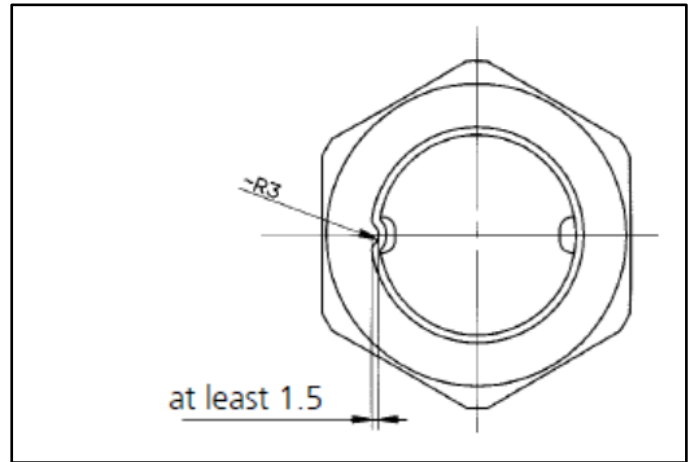
lb-ft	328 ± 23
N.m	445 ± 31



4. Retighten the pitman arm nut by using a box-end or open-end torque wrench.

Tightening Torque:

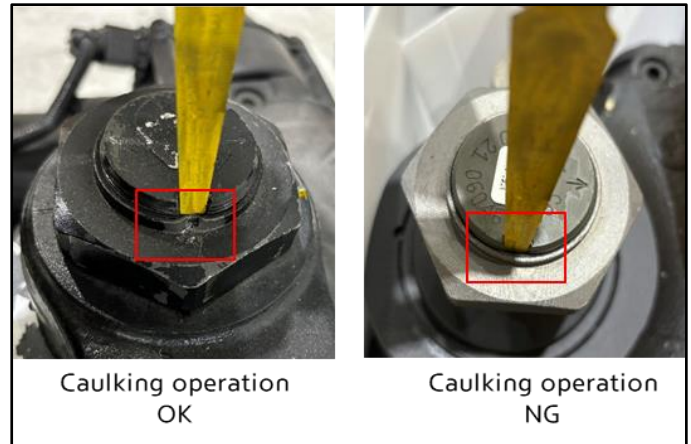
lb-ft	542 ± 26
N.m	735 ± 35



Caulk the pitman arm nut at least 1.5 mm (0.06 in) in depth as shown in the image.

NOTICE

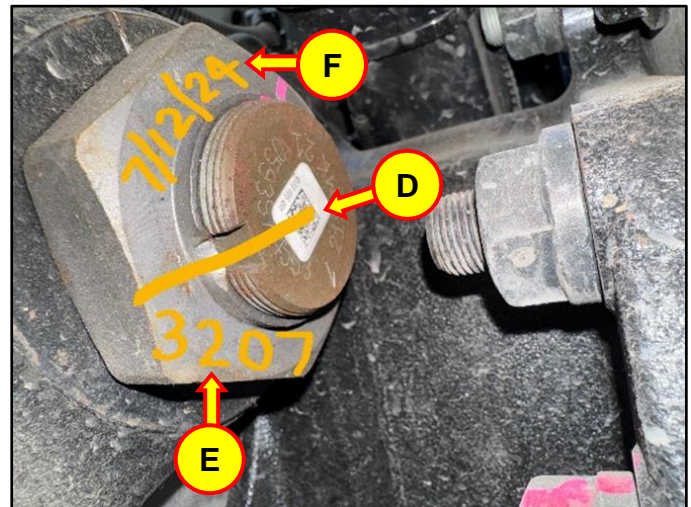
If the pitman arm nut was previously caulked then replace with a new pitman arm nut.



5. After retightening the pitman arm nut:
- Draw a line (D) on the caulking
 - Write the last 4 digits of the VIN (E) and date of repair (F)



Take a photo of the pitman arm nut with the last 4 digits of the VIN and the date of repair, for record keeping.



6. Reinstall everything in the reverse order of the removal process.
7. Turn the steering wheel fully to the left and right to ensure proper operation.
8. The service procedure is complete.