



PERSONAL SERVICE LAB

MASTERS OF CARE

Customer Legal Recall

MAS004306
(CLR 24-07)

From: Aftersales – TSO
To: Maserati Dealer Network
Auburn Hills, MI.
JULY 25 2024

Customer Legal Recall # 730 – U.S. MY22, MY23, MY24 – MC20 and MC20 Cielo Weight Indication and Tire Label Replacement

NOTE: Before starting this procedure, you MUST read these instructions carefully and completely.

MASERATI SAFETY RECALL NOTIFICATION

PERFORM THE PROCEDURE OUTLINED IN THIS TECHNICAL BULLETIN ON ALL AFFECTED VEHICLES BEFORE CUSTOMER DELIVERY OR THE NEXT TIME THE CAR IS IN THE SHOP FOR MAINTENANCE OR REPAIRS.

Maserati S.p.A and Maserati North America, Inc. (Maserati) is recalling certain 2022-2024 Maserati MC20, and 2023-2024 MC20 Cielo vehicles. The Vehicle Capacity Weight (VCW) on the tire label may state incorrect information. As such, these vehicles fail to comply with the requirements of Federal Motor Vehicle Safety Standard (FMVSS) number 110, "Tire Selection and Rims."

Description of Vehicle Safety Recall #730

The tire label on the above-described vehicles may contain incorrect VCW information. A vehicle with an incorrect maximum capacity weight value may be overloaded, which can increase the risk of a crash.

This repair procedure will be performed free of charge to the vehicle owner.

Parts have been ordered on your behalf and will be coming dealer direct. (See details on page 5).

Which Vehicles Are Affected

Check ModisCS+ to see if the vehicle is involved in this action and if it has not been previously performed.

Vehicle Remedy Information

OVERVIEW

Some Maserati 2023- 2024 MY MC20 Cielo and 2022 -2024 MY MC20 may have been built with a non-compliant tire placard reporting incorrect Vehicle Capacity Weight (“VCW”).

Vehicles involved

- **Coupé:** Incorrect manufacturer label + Incorrect tire label
- **Cielo:** Incorrect manufacturer label (the weights on the tire label comply with RHT) (RHT = Retractable Hard Top)

Solution:

- Install a new labels created specifically for the campaign.
- Replace the tire info label (COUPE' only)

Parts Information

Parts have been ordered on your behalf and will be coming dealer direct. (See details page 5).

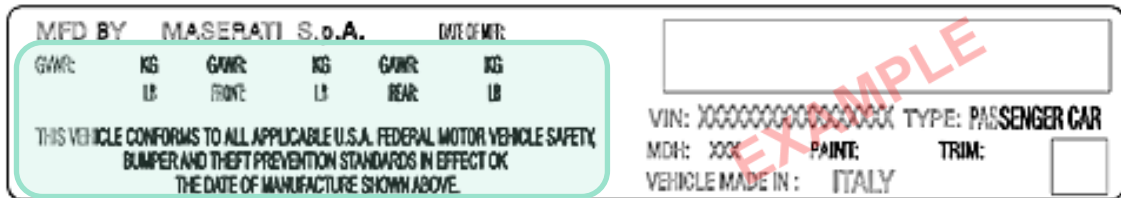
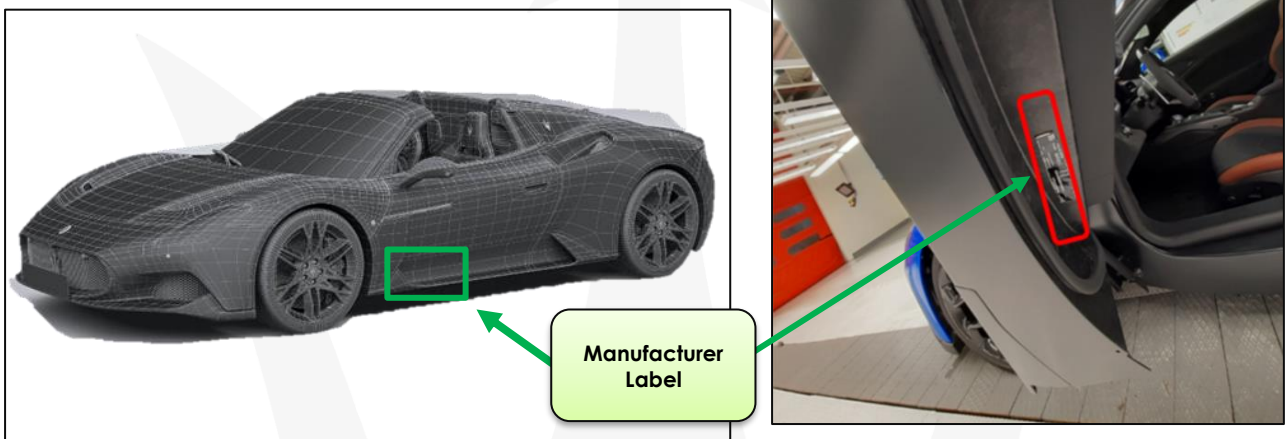
ISSUE	Model	SOLUTION	
		USA & Portorico	CANADA
ISSUE 1 Wrong weight on manufacturer label	COUPE'		
	RHT		
ISSUE 2 Wrong weight on Tyre Label (Only Coupé Involved)	COUPE'		
	RHT	Nothing to do	Nothing to do

Use the Attached VIN list to verify the correct LABEL applicable to each VIN:

Model	Complete VIN	PN Manufactured label	PN Tyre label	PRESS CTRL + F to search for the VIN
MC20 MY22	ZAM24BXA0N0379799	670354054	670222221	
MC20 MY22	ZAM24BXA2N0383790	670354055	670222220	
MC20 Cielo MY24	ZAMBMSAB8R0454286	670354056	NA	

Manufacturer Placard replacement (Coupé + Cielo)

1. Identify the labels to update inside the left side door, underneath.



2. Use isopropyl alcohol and a clean microfiber cloth to carefully clean the area of any debris.
3. Carefully position and apply the new label on top of the existing one. Use a soft Telfon tool to remove any air bubbles.

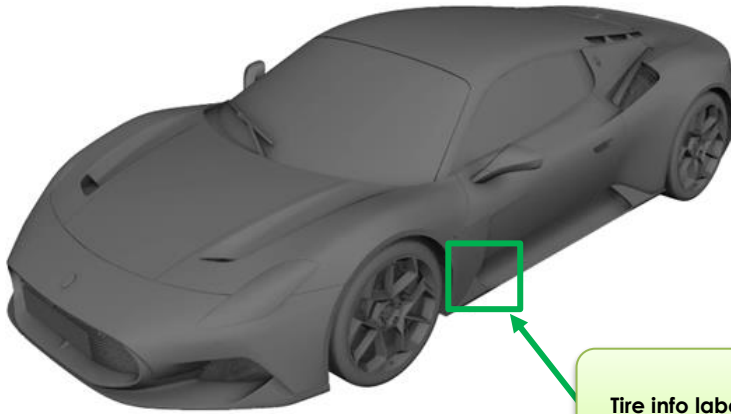


Align and apply the new label in the green area, exactly on top of the old values.

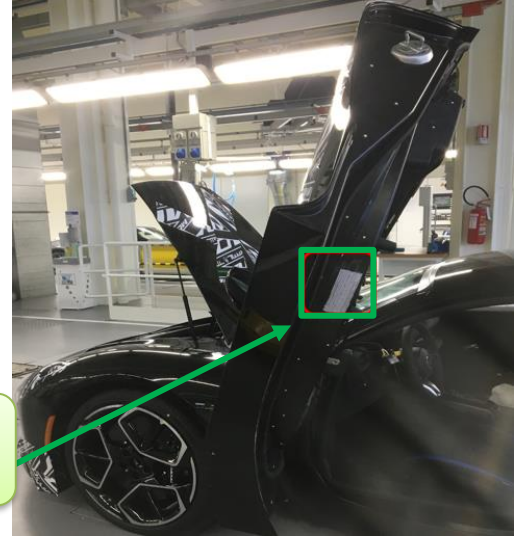
Tire Placard replacement (Coupé only)

This label is intended to be replaced exclusively for MC20 Coupé versions only. Use the included VIN List and verify the correct label part number for the vehicle in question.

- Proceed with replacing the "Tire Pressure Information" label, which is always positioned under the left door frame.
- Use a heat gun to remove the old label.



Tire info label



- After removing the old label. Use isopropyl alcohol and a clean microfiber cloth to carefully clean the area of any leftover residue.

Incorrect vehicle weight capacity

Correct vehicle weight capacity

TIRE AND LOADING INFORMATION			
SEATING CAPACITY - TOTAL 2 FRONT 2 REAR 0			
THE COMBINED WEIGHT OF OCCUPANTS AND CARGO SHOULD NEVER EXCEED 180 kg OR 397 lbs.			
TIRE	FRONT	REAR	SPARE
ORIGINAL TIRE SIZE	245/35 ZR20 (95Y)	305/30 ZR20 (103Y)	NONE
COLD TIRE INFLATION PRESSURE	220 kPa / 32 psi	220 kPa / 32 psi	NONE

180 kg OR 397 lbs.

TIRE AND LOADING INFORMATION			
SEATING CAPACITY - TOTAL 2 FRONT 2 REAR 0			
THE COMBINED WEIGHT OF OCCUPANTS AND CARGO SHOULD NEVER EXCEED 136 kg OR 300 lbs.			
TIRE	FRONT	REAR	SPARE
ORIGINAL TIRE SIZE	245/35 ZR20 (95Y)	305/30 ZR20 (103Y)	NONE
COLD TIRE INFLATION PRESSURE	220 kPa / 32 psi	220 kPa / 32 psi	NONE

136 kg OR 300 lbs.

- Carefully position and apply the new label in place of the old one. Use a soft Telfon tool to remove any air bubbles.

TIRE AND LOADING INFORMATION			
SEATING CAPACITY - TOTAL 2 FRONT 2 REAR 0			
THE COMBINED WEIGHT OF OCCUPANTS AND CARGO SHOULD NEVER EXCEED 136 kg OR 300 lbs.			
TIRE	FRONT	REAR	SPARE
ORIGINAL TIRE SIZE	245/35 ZR20 (95Y)	305/30 ZR20 (103Y)	NONE
COLD TIRE INFLATION PRESSURE	220 kPa / 32 psi	220 kPa / 32 psi	NONE

Coupé Tire Label - US

- Procedure complete.

Parts Needed For The Recall

Description	Part number	Amount
Manufacturer Coupe USA plate	670354054	1
Manufacturer RHT USA plate	670354056	1
TIRE PRESSURE INFO PLATE - NA	670222221	1

Warranty Information

Description	Code
Customer Legal Recall Number	730
Warranty Code	24
Fault Code	063
Component Code	9.17.057
Operation Code	
<ul style="list-style-type: none"> ▪ Replacement 1 label (only RHT) ▪ Replacing 2 labels (only Coupé) 	9.17.057.A (0,10 h) 9.17.011.A (0,30 h)

If you have any questions, contact your Regional AfterSales Manager (RAM) or the Technical Support Helpdesk.

Thank You for your continued support and cooperation.

Maserati North America Inc.
Aftersales Dept.

IMPORTANT SAFETY RECALL INFORMATION

July 25, 2024

NHTSA Recall#: 24V537
Maserati Recall # 730

Dear Maserati Dealer:

This notification is sent to you in accordance with the requirements of the National Traffic and Motor Vehicle Safety Act.

Maserati S.p.A and Maserati North America, Inc. (Maserati) is recalling certain 2022-2024 Maserati MC20, and 2023-2024 MC20 Cielo vehicles. The Vehicle Capacity Weight (VCW) on the tire label may state incorrect information. As such, these vehicles fail to comply with the requirements of Federal Motor Vehicle Safety Standard (FMVSS) number 110, "Tire Selection and Rims."

The tire label on the above-described vehicles may contain incorrect VCW information. A vehicle with an incorrect maximum capacity weight value may be overloaded, which can increase the risk of a crash.

The remedy is to conduct a voluntary recall of all affected vehicles and to apply an overlay label to the tire placard or tire plate replacement. The remedy will be performed free of charge to the vehicle owner. We will, of course, reimburse you for the labor necessary to carry out this recall campaign. The necessary label for this recall is currently available to the dealers, and owners will be directed to call their dealers for repairs.

Maserati dealers must ensure recalls are completed after having been notified by MNA that a safety-related defect or noncompliance exists in any motor vehicle or item of replacement equipment in the dealer's possession at the time of notification. In MNA's case, this notification would typically be made by the issuance of a recall notification in the form of a Technical Bulletin.

Under the National Traffic and Motor Vehicle Safety Act of 1966, as amended, if a recall campaign is announced by MNA, **dealers must ensure that all recalls on new vehicles and new items of replacement equipment are completed BEFORE delivery to the consumer.**

This means that dealers must not illegally sell, lease, or deliver new motor vehicles or new items of replacement equipment to consumers with an open recall.

Under the terms of the Certified Pre-Owned ("CPO") program, CPO vehicles with an open recall may not be sold or delivered to the consumer.

Finally, MNA dealers **should not sell or use parts that have been recalled by MNA. Please follow the specific instructions provided by MNA about the return or disposition of the parts.**

If you have any of the affected vehicles in your stock, you must not sell them until you have performed the necessary recall repairs on the vehicle. If you have sold any of the vehicles with VINs indicated in the enclosed instructions and have not yet sent in the new owner information to MNA, please do so at once so that MNA may notify these owners.

Thank you for your cooperation.

Sincerely,
Maserati Technical Safety and Regulatory Compliance