


RECALL 24V490 / 2024-374 REMEDY INSTRUCTIONS

| | | |
|-----------------------------------------------------------------------------------|-----------------------------------------------------------------------------------------------|---------------------------------------------------------------------------------------------------------------------------------|
|  | Make(s): SALEM & WILDWOOD Model(s): SEE BELOW Model Year(s): 2024 - 2025 | Repair Code: RC-047-01-00-004582 Allotted Time: 2.50 HRS. Inspection Code: RC-047-05-00-004581 Allotted Time: .10 HRS. |
| | Concern: Certain vehicles may not have been manufactured with a secondary means of egress. | Photo(s) Required: NO Prior Authorization Required: YES Part(s) Kit Number: F100327547 Part(s) Return: N/A |

Turn off LP Gas at LPG Tank(s). Disconnect the vehicles' battery Positive and Negative, disconnect any House battery(s) Positive and Negative, if equipped with a generator ensure it is off and lastly, ensure the vehicle is disconnected from shore power. Block any tires/wheels to prevent the vehicle from rolling. Failure to do so may result in electrocution, fire or other personal injury, property damage and/or death.

CERTAIN 2024 – 2025 – SALEM: SMT167RBK & SMT167RBKX
 CERTAIN 2024 – 2025 – WILDWOOD: WDT167RBK & WDT167RBKX

TOOLS REQUIRED:

ROUTER/TINSNIPS SCREW GUN
 STAPLER D-10 CAULK GUN
 STANLEY KNIFE OSCILLAING TOOL
 GREASE PENCIL/PENCIL MASKING TAPE

CONTENTS OF PARTS KIT:

WINDOW, EGRESS 27"X 48" 2 – 3" RADIUS BLOCKS
 EXIT STICKER FOAM SEAL
 LUMBER, 2" X 2"S WINDOW SCREWS
 1" SEAM TAPE 3" WASHER HEAD SCREWS
 VALANCE AND SHADE

INSPECTION:

STEP 1: LOCATE THE FRONT, OFF DOOR SIDE (DRIVERS SIDE) WINDOW;

- IF THE WINDOW CURRENTLY INSTALLED IN THAT LOCATION IS LABELED AS "EGRESS"/"EXIT" – CLAIM INSPECTION CODE;
- IF THE WINDOW CURRENTLY INSTALLED IN THAT LOCATION IS A 12" X 48" WINDOW, MOVE TO THE REMEDY;

REMEDY – FOR SMT167RBK, SMT167RBKX, WDT167RBK, WDT167RBKX ONLY:

STEP 1: REMOVE VALANCE AND VALANCE BRACKETS (FIG. 1);

STEP 2: REMOVE THE WINDOW INTERIOR TRIM RING AND WINDOW, DISCARD BOTH (FIG. 2);

STEP 3: PLACE THE TEMPLATE AGAINST THE FORWARD SIDE OF THE WINDOW OPENING AND AGAINST THE BOTTOM OF THE WINDOW OPENING (FIG. 3);

STEP 4: USE OSCILLATING TOOL TO CUT OUT PANELING AFTER TRACING (FIG. 4);

- CUT AND REMOVE BOTH STUDS;
- USE UTILITY KNIFE TO CUT AWAY BATTEN INSULATION;

STEP 5: BUILD WINDOW FRAME WITH RADIUS BLOCKS TO FIT SIDEWALL OPENING AND INSTALL SCREWS AT TOE IN ANGLE (FIG. 5);

- EDGE OF NEWLY BUILT WINDOW FRAME SHOULD LINE UP WITH OPENING EDGE;

STEP 6: CUT TO SIZE TWO HORIZONTAL 2" X 2" (TOP AND BOTTOM) AND STAPLE TO PANELING (FIG. 6);

- NEXT TOE IN ANGLE ONE SCREW AT EACH END;
- KEEP STAPLES CLOSE TO OPENING EDGE IN ORDER TO BE COVERED BY WINDOW RING;

STEP 7: AFTER FRAMING, ROUTE OUT 27" X 48" WINDOW OPENING (FIG. 7);

- TAPE EXTERIOR PARAMETER AROUND NEW WINDOW FRAME TO PREVENT SCRATCHES TO METAL;

STEP 8: PREP AND ADD WINDOW FOAM SEAL (FIG. 8);

- INSTALL WINDOW TRIM RING AND INSTALL WINDOW;
- SECURE WITH PROVIDED WINDOW SCREWS;

STEP 9: INSTALL WINDOW SHADE AND ADJUST SHADE STRING AS NEEDED (FIG. 9);

- INSTALL VALANCE PROVIDED WITH BRACKETS;

STEP 10: INSTALL PROVIDED 1" SEAM TAPE TO COVER SCREW HOLE (FIG. 10);

- INSTALL PROVIDED "EXIT" STICKER UNDER WINDOW;

STEP 11: PREP AND SEAL WINDOW (FIG. 11);

STEP 12: HI-POT TEST THE VEHICLE;

STEP 13: CLAIM REPAIR CODE WITH HOURS NEEDED.

RECALL 24V490 / 2024-374 REMEDY INSTRUCTIONS



Make(s): SALEM & WILDWOOD
Model(s): SEE BELOW
Model Year(s): 2024 - 2025

Concern:
Certain vehicles may not have been
manufactured with a secondary means of
egress.

Repair Code: RC-047-01-00-004582
Allotted Time: 2.50 HRS.
Inspection Code: RC-047-05-00-004581
Allotted Time: .10 HRS.

Photo(s) Required: NO
Prior Authorization Required: YES
Part(s) Kit Number: F100327547
Part(s) Return: N/A

FIG. 1



FIG. 2



FIG. 3



FIG. 4



FIG. 5



RECALL 24V490 / 2024-374 REMEDY INSTRUCTIONS



Make(s): SALEM & WILDWOOD
Model(s): SEE BELOW
Model Year(s): 2024 - 2025

Concern:
Certain vehicles may not have been
manufactured with a secondary means of
egress.

Repair Code: RC-047-01-00-004582
Allotted Time: 2.50 HRS.
Inspection Code: RC-047-05-00-004581
Allotted Time: .10 HRS.
Photo(s) Required: NO
Prior Authorization Required: YES
Part(s) Kit Number: F100327547
Part(s) Return: N/A

FIG. 6



FIG. 7



FIG. 8

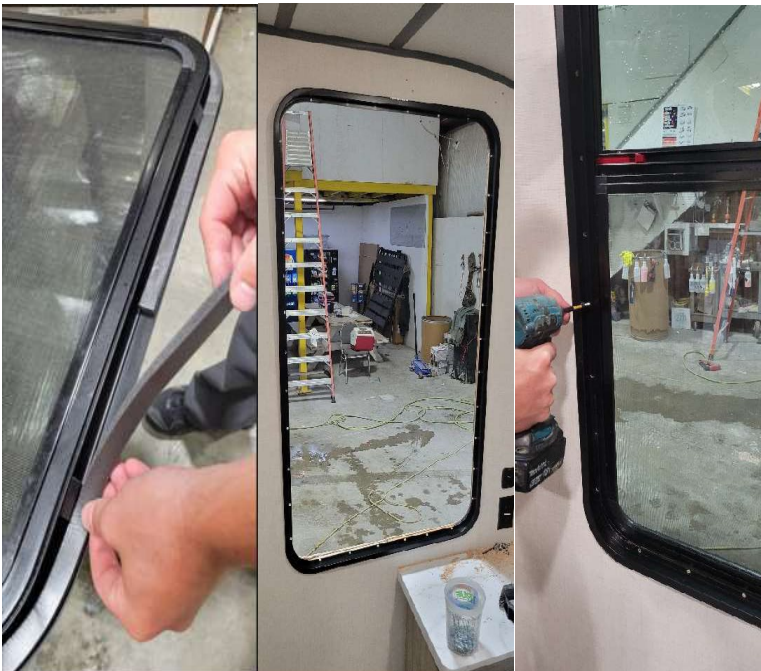
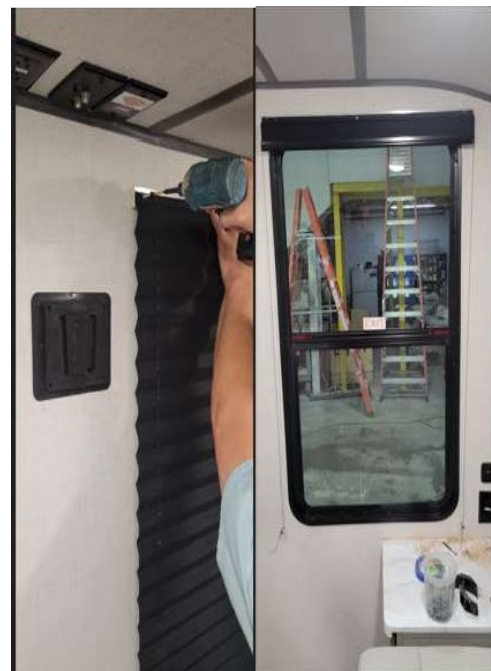


FIG. 9



RECALL 24V490 / 2024-374 REMEDY INSTRUCTIONS



Make(s): SALEM & WILDWOOD
Model(s): SEE BELOW
Model Year(s): 2024 - 2025

Concern:
Certain vehicles may not have been
manufactured with a secondary means of
egress.

Repair Code: RC-047-01-00-004582
Allotted Time: 2.50 HRS.
Inspection Code: RC-047-05-00-004581
Allotted Time: .10 HRS.

Photo(s) Required: NO
Prior Authorization Required: YES
Part(s) Kit Number: F100327547
Part(s) Return: N/A

FIG. 10



FIG. 11



END OF REMEDY & PHOTOS FOR SMT167RBK, SMT167RBKX, WDT167RBK, WDT167RBKX ONLY