

RECALL 24V488 / 2024-372 REMEDY INSTRUCTIONS



Make(s): MANY, SEE BELOW
Model(s): MANY, SEE BELOW
Model Year(s): 2024 - 2025

Concern:

The backer for the Lippert Ladder Receiver may not have been installed during manufacturing.

Repair Code: RC-076-09-00-004566
Allotted Time: 1.00 HRS.
Inspection Code: RC-076-05-00-004565
Allotted Time: .30 HRS.

Photo(s) Required: YES, PRE/POST REMEDY
Prior Authorization Required: YES
Part(s) Kit Number: F100622835
Part(s) Return: N/A

Turn off LP Gas at LPG Tank(s). Place vehicle in (P) Park and engage the Parking Brake. Disconnect the vehicles' battery Positive and Negative, disconnect any House battery(s) Positive and Negative, if equipped with a generator ensure it is off and lastly, ensure the vehicle is disconnected from shore power. Block any tires/wheels to prevent the vehicle from rolling. Failure to do so may result in electrocution, fire or other personal injury, property damage and/or death.

CERTAIN 2024 – 2025 CROSS TRAIL: C2C20BHTA, C2C20CBTA, C2C20XGTA, C2C21XGTA, C2C22XGF35, C2C23XGF35, C2C23XGF45 & C2C24FLM

F100622835 – PARTS KIT

INSPECT:

STEP 1: LOCATE LCI LADDER RECEIVER ON THE REAR OF THE VEHICLE;

- IF RECEIVER IS PRESENT, MOVE TO REMEDY. (SUBMIT PHOTO)
- IF RECEIVER IS NOT PRESENT, CLAIM INSPECTION CODE.

REMEDY FOR REMOVING THE LCI LADDER RECEIVER:

STEP 1: REMOVE THE LCI LADDER RECEIVER FROM THE VEHICLE AND DISCARD;

STEP 2: BODY WORK THE HOLES AS NEEDED;

STEP 4: CLAIM INSPECTION CODE.

REMEDY FOR INSTALLATION OF ALUMINUM LADDER:

STEP 1: LOCATE THE LADDER ONTO THE REAR WALL AS PERSCRIBED IN THE CORRISPONDING REAR WALL PRINT ATTACHED;

- EACH MODEL HAS A SPECIFIC LOCTION FOR THE LADDERS;
- ENSURE TO MEASURE TO MATCH THE PRINT DIMENSIONS FOR THE LADDER LOCATION;

STEP 2: APPLY BYTL TAPE TO THE MOUNT PADS, COVERING THE HOLES FOR EACH FASTENER;

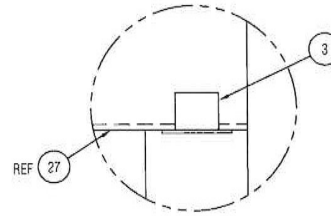
STEP 3: PUSH THE LADDER FIRMLY AGAINST THE REAR WALL TO HELP HOLD IN PLACE;

STEP 4: SECURE THE LADDER TO THE REAR WALL USING THE INCLUDED FASTENERS;

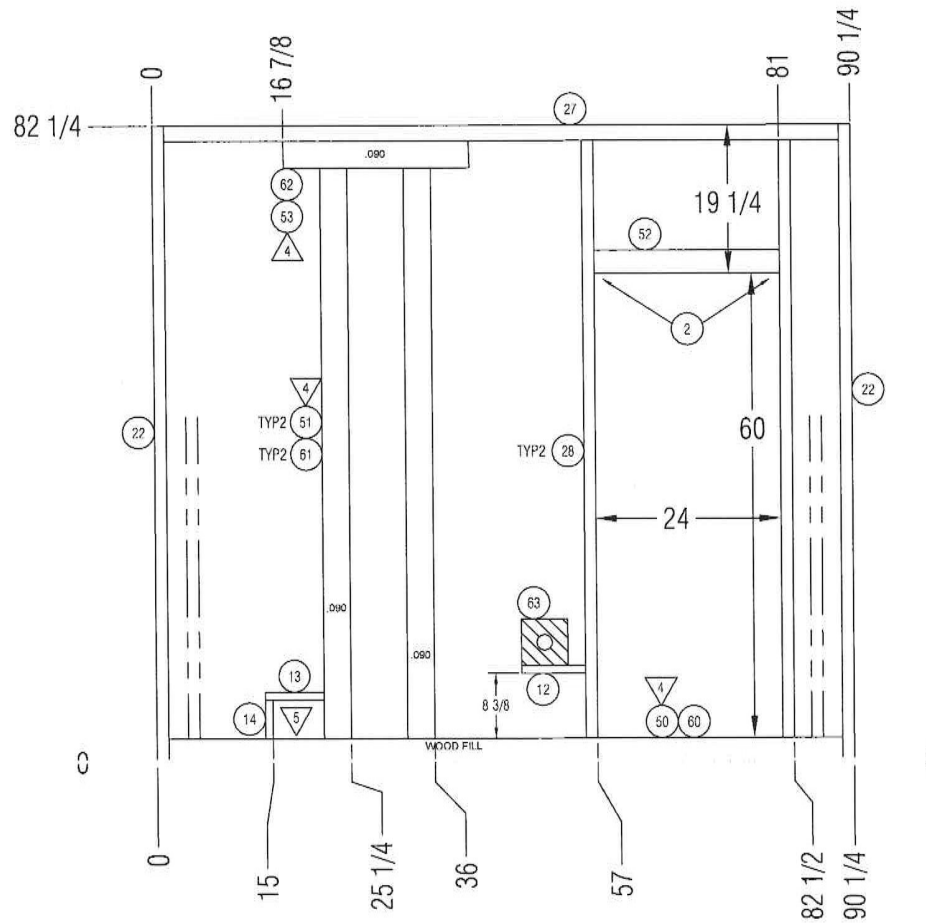
STEP 5: SUBMIT PHOTO WITH THE CLAIMED REPAIR CODE.

NOTES:

1. VIEWED FROM INTERIOR
2. ALL TUBING LAID FLAT, UNLESS NOTED.
3. ON EDGE.
4. WOOD FILL.
5. ROUT OUT.



INSTALL GROMMET ON BOTTOM OF TUBE



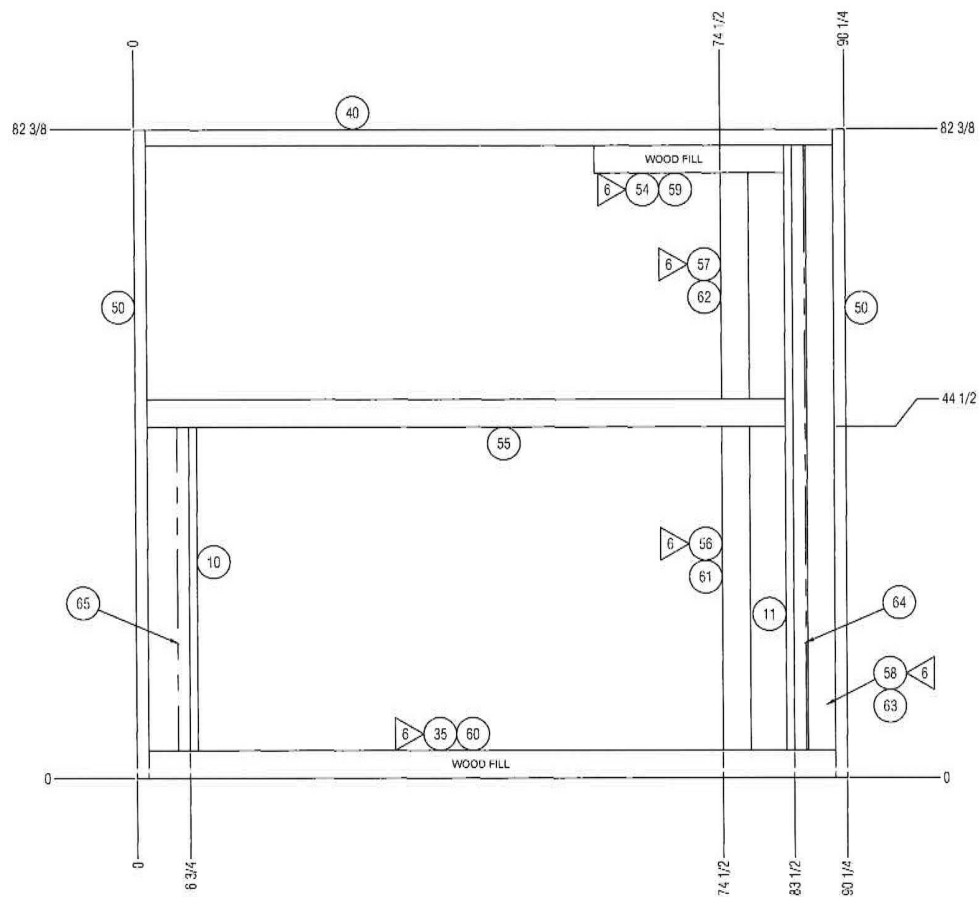
REV	CHANGE DESCRIPTION	BY	DATE	PCR
1	MODEL CHANGE WAS F100364978			MC2025

1	63	BACKER, SPRAY AWAY HATCH (F100114655)
1	62	LUMBER, 1-1/8 X 2-5/8 X 23 1/2
2	61	LUMBER, 1-1/8 X 2-5/8 X 73 1/4
1	60	LUMBER, 1-1/8 X 2-5/8 X 87
1	53	X 24 *STUFF
1	52	X 24
2	51	X 73 3/4 *STUFF
1	50	X 87 1/4 *STUFF
		AL TUBE, .090 1-1/2 X 3
2	28	X 77 1/4
		AL TUBE, .062 1-1/2 X 1-1/2
1	27	X 87 1/4
		AL TUBE, .062 1-1/2 X 2
2	22	X 82 1/4
		AL TUBE, .040 1-1/2 X 1-1/2
1	14	X 5
1	13	X 7 3/4
1	12	X 8 1/4
		AL TUBE, .040 1 X 1-1/2
1	3	7101030 GROMMET, PLASTIC 3/4 X 3/4 LPC503
2	2	C01214887 PATTERN BLOCK, RAD DOOR 4.69" R
1		

QUANTITY	REF NO	PART NO.	MATERIAL OR PART DESCRIPTION
TOU FRANCE UN PASS	WT IN LBS		CLASS CODE:
OTHERWISE SPECIFY LBS			
WOOD	OTHER	REMARKS	DATE
± 1/8"	± 1/16"	REMARKS	DATE
± .125"	± .063"	REMARKS	DATE
± 1"	± 5"	REMARKS	DATE
CT 20 BH	USED ON	DO NOT SCALE	DRAWING # F100573477
			SHEET 1 OF 3

©2019 COACHMEN RV

1. VIEWED FROM INTERIOR SIDE.
2. ALUMINUM WELDED CONSTRUCTION.
3. ALL TUBING LAID FLAT.
4. GRIND ALL WELDS SMOOTH.
5. REFER TO SPEC. PRINT 848173 FOR WELDING STANDARDS.
6. STUFF WITH WOOD.



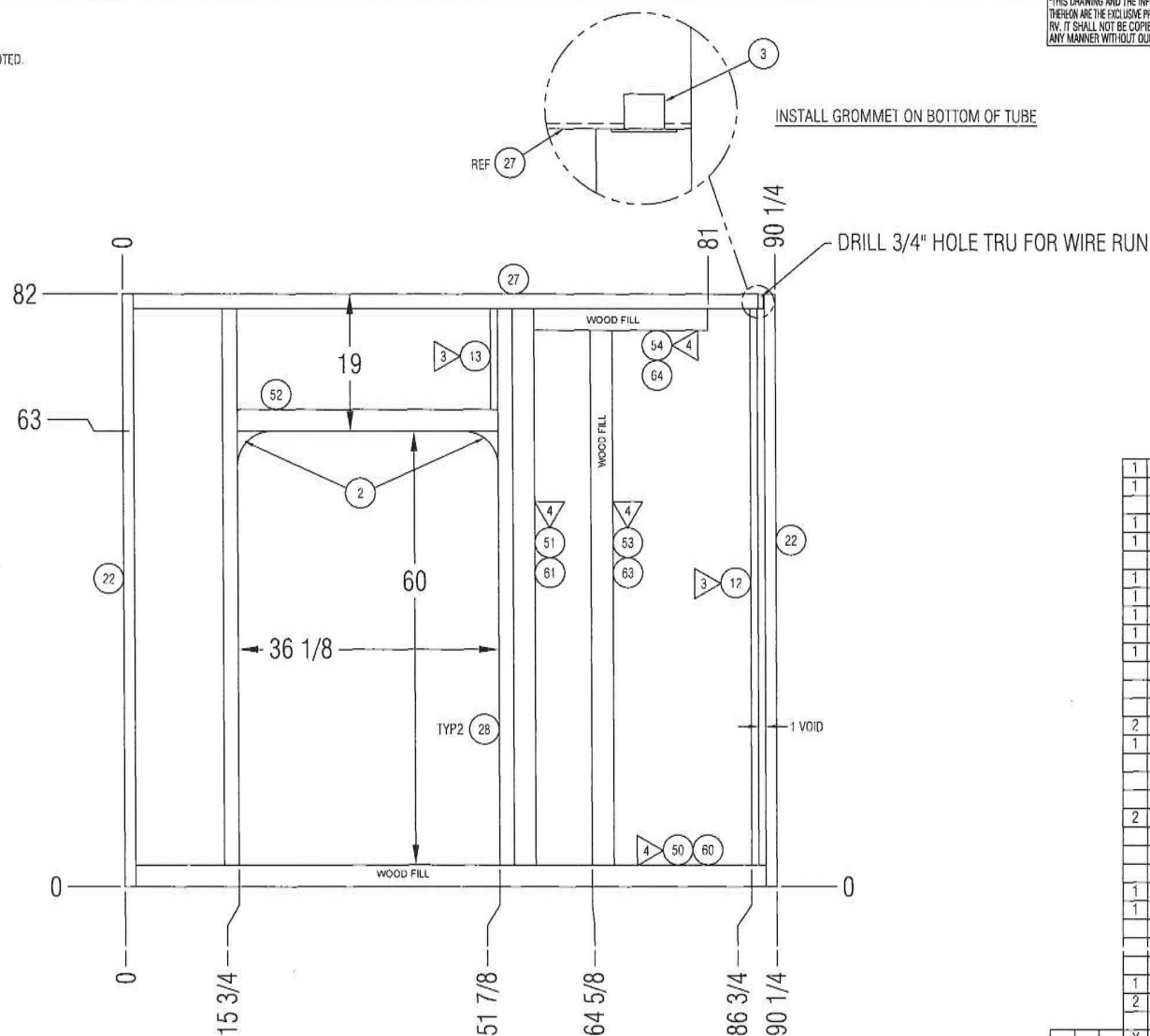
THIS DRAWING AND THE INFORMATION CONTAINED HEREIN ARE THE EXCLUSIVE PROPERTIES OF COWI A/S. IT SHALL NOT BE COPIED OR DUPLICATED IN ANY MANNER WITHOUT OUR WRITTEN CONSENT	REV	CHANGE DESCRIPTION	BY	DATE	PCR
	LVL	MODEL CHANGE WAS F100202858	-	-	MC2025

1	65	WIRE CHANNEL, 1 X 1-1/2 X 4 1/2
1	64	WIRE CHANNEL, 1 X 1-1/2 X 76-3/4
1	63	LUMBER, 3/4 X 3 1/4 X 76 1/4
1	62	LUMBER, 3/4 X 3 1/4 X 28 1/4
1	61	LUMBER, 3/4 X 3 1/4 X 40 1/2
1	60	LUMBER, 3/4 X 3 1/4 X 87
1	59	LUMBER, 3/4 X 3 1/4 X 23 1/2
1	58	X 76 3/4 *STUFF
1	57	X 28 3/4 *STUFF
1	56	X 41 *STUFF
1	55	X 81
1	54	X 24
		AL TUBE, .090 1 X 3 1/2
2	50	X 82 3/8
		AL TUBE, .045 1 X 1-1/2
1	40	X 87 1/4
		AL TUBE, .045 1 X 2
1	35	X 87 1/4
		AL TUBE, .045 1 X 3-1/2
1	11	X 76-3/4
1	10	X 41
		AL TUBE, .040 1 X 1

		X	-			PLANT: LAMINATION		
QUANTITY		REF	PART NO.		MATERIAL OR PART DESCRIPTION			
		WFLUGS				CLASS CODE:		
TOLERANCE UNLESS OTHERWISE SPECIFIED		DATE	DATE		COACHMEN R.V. A DIVISION OF FOREST RIVER INC.			
WOOD	OTHER	REM	04/08/2024		NAME	WALL ASSY, REAR		
±1/8"	±1/16"	APPROV	DATE		SCALE	DRAWING #		REV
±.125"	±.063"				-	F100568231		
±1"	±.5"				DO NOT SCALE		SHEET	1 OF 3

1. VIEWED FROM INTERIOR.
2. ALL TUBING LAID FLAT, UNLESS NOTED.
3. ON EDGE.
4. WOOD FILL.

THIS DRAWING AND THE INFORMATION CONTAINED THEREON ARE THE EXCLUSIVE PROPERTIES OF COACHMEN RV. IT SHALL NOT BE COPIED OR DUPLICATED IN ANY MANNER WITHOUT OUR WRITTEN CONSENT.	REV LEVEL	CHANGE DESCRIPTION	BY	DATE	PCR
	-	MODEL CHANGE WAS F100358599	-	-	MC2023

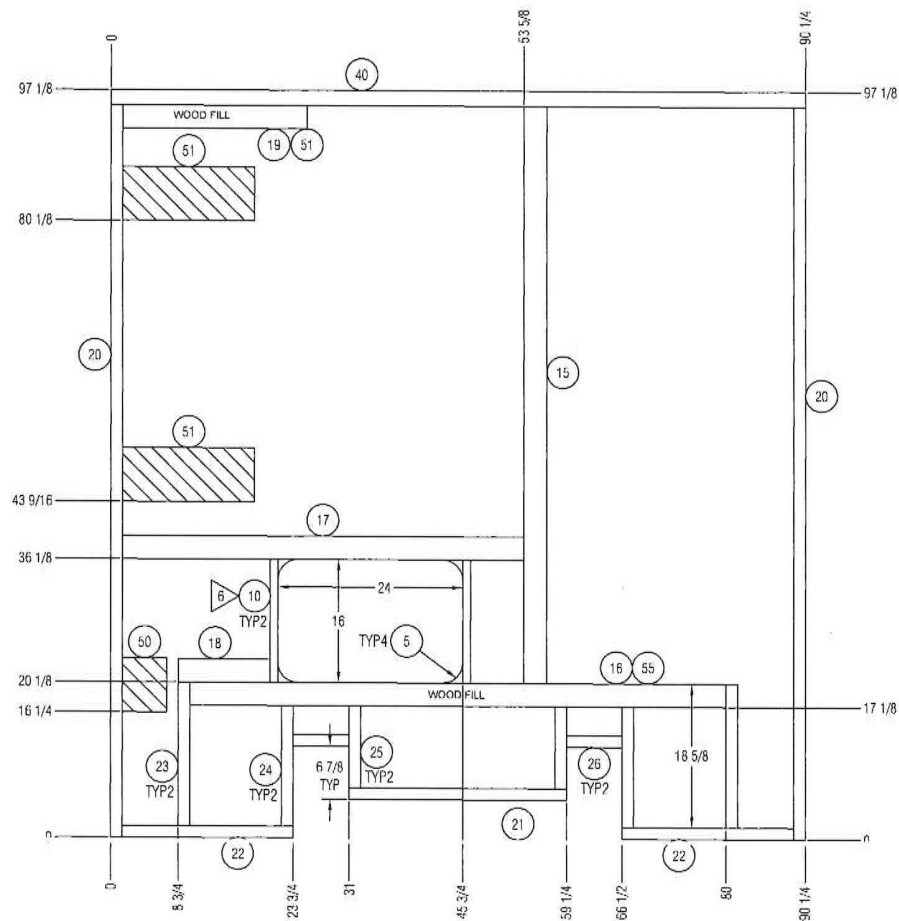


1	64	LUMBER, 1-1/8 X 2-5/8 X 23 1/2
1	63	LUMBER, 1-1/8 X 2-5/8 X 74 1/2
1	61	LUMBER, 1-1/8 X 2-5/8 X 76 1/2
1	60	LUMBER, 1-1/8 X 2-5/8 X 87
1	54	X 24 *STUFF
1	53	X 74 *STUFF
1	52	X 36 1/8
1	51	X 77 *STUFF
1	50	X 87 1/4 *STUFF
		AL TUBE, .090 1-1/2 X 3
2	28	X 77
1	27	X 87 1/4
		AL TUBE, .062 1-1/2 X 2
2	22	X 82
		AL TUBE, .040 1-1/2 X 1-1/2
1	13	X 14
1	12	X 77
		AL TUBE, .040 1 X 1-1/2

1	3	7101030	GROMMET, PLASTIC 3/4 X 3/4 LPC503
2	2	C01214887	PATTERN BLOCK, RAD DOOR 4.69" R
	1		

QUANTITY		REF NO.	PART NO.		PLANT: LAMINATION	
		WT IN LBS			MATERIAL OR PART DESCRIPTION	
TOLERANCE UNITS UNIFORM SPECIFIC		CRTN	DATE		CLASS CODE:	
		REM	04/16/2024		COACHMEN R.V. A DIVISION OF FOREST RIVER INC	
WOOD	OTHER	APPRO	DATE		WALL ASSY, REAR	
± 1/8"	± 1/16"		SCALE		DRAWING # F100573348	
± 1/25"	± .003"		DO NOT SCALE		SHEET 1 OF 3	
± 1"	± 5"					

1. VIEWED FROM INTERIOR
2. ALUMINUM WELDED CONSTRUCTION.
3. ALL TUBING LAID FLAT UNLESS NOTED.
4. REFER TO PRINT 848173 FOR WELDING STANDARDS.
5. GRIND ALL WELDS SMOOTH.
6. ON EDGE.

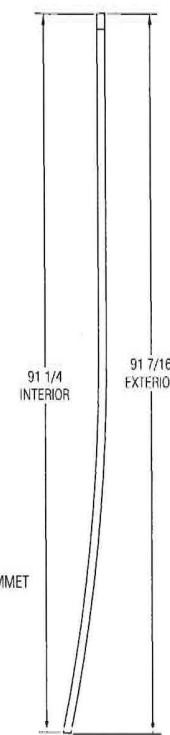


THIS DRAWING AND THE INFORMATION CONTAINED THEREIN ARE THE EXCLUSIVE PROPERTIES OF COMBINE RV. IT SHALL NOT BE COPIED OR DUPLICATED IN ANY MANNER WITHOUT OUR WRITTEN CONSENT	REV	CHANGE DESCRIPTION	BY	DATE	PCR
	LVL				
		A. MOVE HUNG DOOR SW TO EXISTING SHORTEN ITEMS (18 & 2)	CP	08/06/20	2891
		CHANGE ITEM (18) DO 2 CORRECT LENGTH			
	B	ADDED LADDER PREP BACKER	JG	7/28/23	3638
	C	SEE PAGE 2	VN	04/24	MC2025

1	55	LUMBER, 1 1/8 X 2 5/8 X 69 1/2	
1	54	LUMBER, 1 1/8 X 2 5/8 X 23 1/2	
2	51	7 X 17 1/8	*STUFF
1	50	7 X 5 3/4	
		PLYWOOD 1-1/2 X	
1	40	X 90 1/4	
		AL TUBE, .062 1-1/2 X 2	
2	26	X 7 1/4	
2	25	X 10 5/8	
2	24	X 15 5/8	
2	23	X 18 5/8	
2	22	X 22 1/4	
1	21	X 28 1/4	
2	20	X 95 1/8	
		AL TUBE, .045 1-1/2 X 1-1/2	
1	19	X 24	
1	18	X 12	
1	17	X 52 1/8	
1	16	X 69 3/4	*STUFF
1	15	X 75	
		AL TUBE, .090 1-1/2 X 3	
2	10	X 16	
		AL TUBE, .062 1 X 1-1/2	
4	5	429935	PATTERN BLOCK - TRUNK DOOR RADIUS GROMMET, PLASTIC 5/8
	1		

		X		PLANT: LAMINATION	
QUANTITY		REF. NO.	PART NO.		MATERIAL OR PART DESCRIPTION
		WGT. IN LBS.		CLASS CODE	
TOL. FINANCY UNITS FT/IN (W/SGE OFT OF ED)		OFFICIAL	DATE		COACHMEN R.V. A DIVISION OF FOREST RIVER INC.
WOOD OTHER		JJ	01/20		
		APPLY	DATE		NAME WALL ASSY. REAR
<div> <div>PM 24CBS</div> <div>USED ON</div> </div>		<div> <div>± 1/8"</div> <div>± 1/16"</div> </div>		<div> <div>SKILL</div> <div>UNAWING #</div> </div>	
		<div> <div>± .125"</div> <div>± .063"</div> </div>		<div> <div>F100167502</div> <div>REV C</div> </div>	
		<div> <div>± 1"</div> <div>± .063"</div> </div>		<div> <div>DO NOT SCALE</div> <div>SHEET 1 OF 3</div> </div>	

1. VIEWED FROM INTERIOR
2. ALUMINUM WELDED CONSTRUCTION.
3. ALL TUBING LAID FLAT.
4. REFER TO PRINT 848173 FOR WELDING STANDARDS.
5. GRIND ALL WELDS SMOOTH.



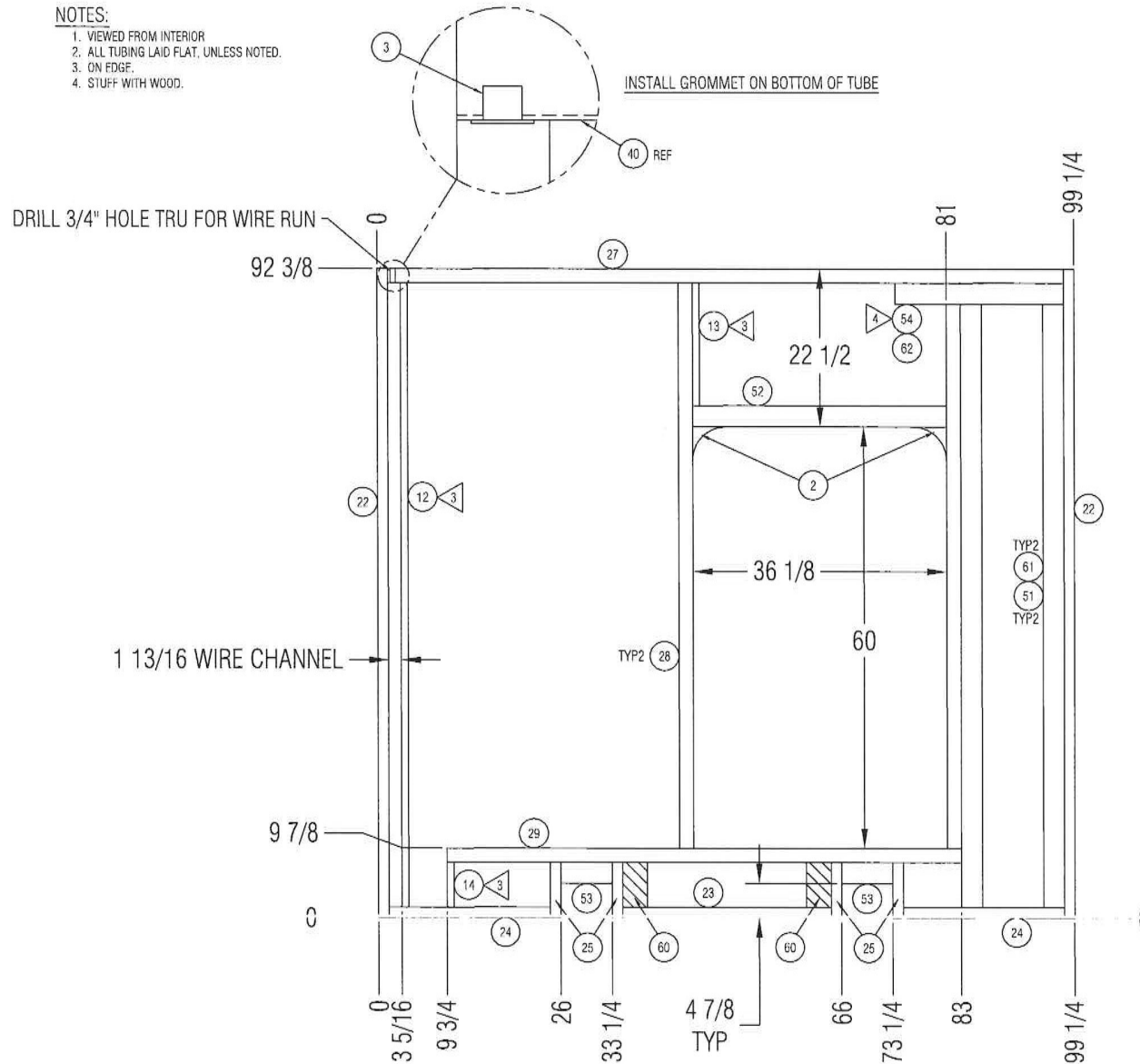
1	60	LUMBER, 3/4 X 3 X 23 1/2	
1	58	X 24 *STUFF	
		AL TUBE, .090 1 X 3 1/2	
1	55	LUMBER, 3/4 X 1 1/8 X 88 1/4	
2	52	6 X 15 1/2	
2	51	6 X 5	
		PLYWOOD 1 X	
1	40	X 90 1/4	
		AL TUBE, .045 1 X 2	
1	26	X 3 3/8	
2	25	X 21 3/4	
1	24	X 23 1/2	
1	23	X 24 1/8	
1	22	X 26 1/4	
2	21	X 48 5/8	
1	20	X 88 1/4	
		*STUFF	
		AL TUBE, .045 1 X 1-1/2	
2	18	X 7 1/4	
2	17	X 9 1/4	
2	16	X 8 1/4	
1	15	X 22 1/4	
2	14	X 24 1/8	
		AL TUBE, .040 1 X 1	
1	13	X 37 3/8	CUT 42 7/16" OFF FLAT & 10-13/16" OFF CURVE
2	12	X 78 5/8	CUT 1-3/16" OFF FLAT & 10-13/16" OFF CURVE
2	11	X 89 7/16	CUT 1-3/16" OFF FLAT
		1076500	AL TUBE, .062 1 X 1 X 90-5/8 PRE-BENT
4	3	438982	PATTERN BLOCK - WINDOW RADIUS 1 TRK
4	4	429935	PATTERN BLOCK - TRUNK DOOR RADIUS
1	3	7101030	GROMMET, PLASTIC 3/4 X 3/4 LPC503
5	2		GROMMET, PLASTIC 5/8

		X			PLANT: LAMINATION					
QUANTITY			REF NO.	PART NO.	MATERIAL OR PART DESCRIPTION					
			BY N I US						CLASS CODE:	
TOTAL FRAMES LEFT IN DIFFERENCES SPECIFIED			OPTION	DATE	COACHMEN R.V. A DIVISION OF FOREST RIVER INC.					
WOOD OTHER			vance	03/17	WALL ASSY., REAR					
			APPROV		DATE	NAME		DRAWING #		RIV H
						SCALE	C01296967			
						-				
					DO NOT SCALE					
							SHEET		1 OF 3	

©2017 COACHMEN RV

NOTES:

1. VIEWED FROM INTERIOR
2. ALL TUBING LAID FLAT, UNLESS NOTED.
3. ON EDGE.
4. STUFF WITH WOOD.



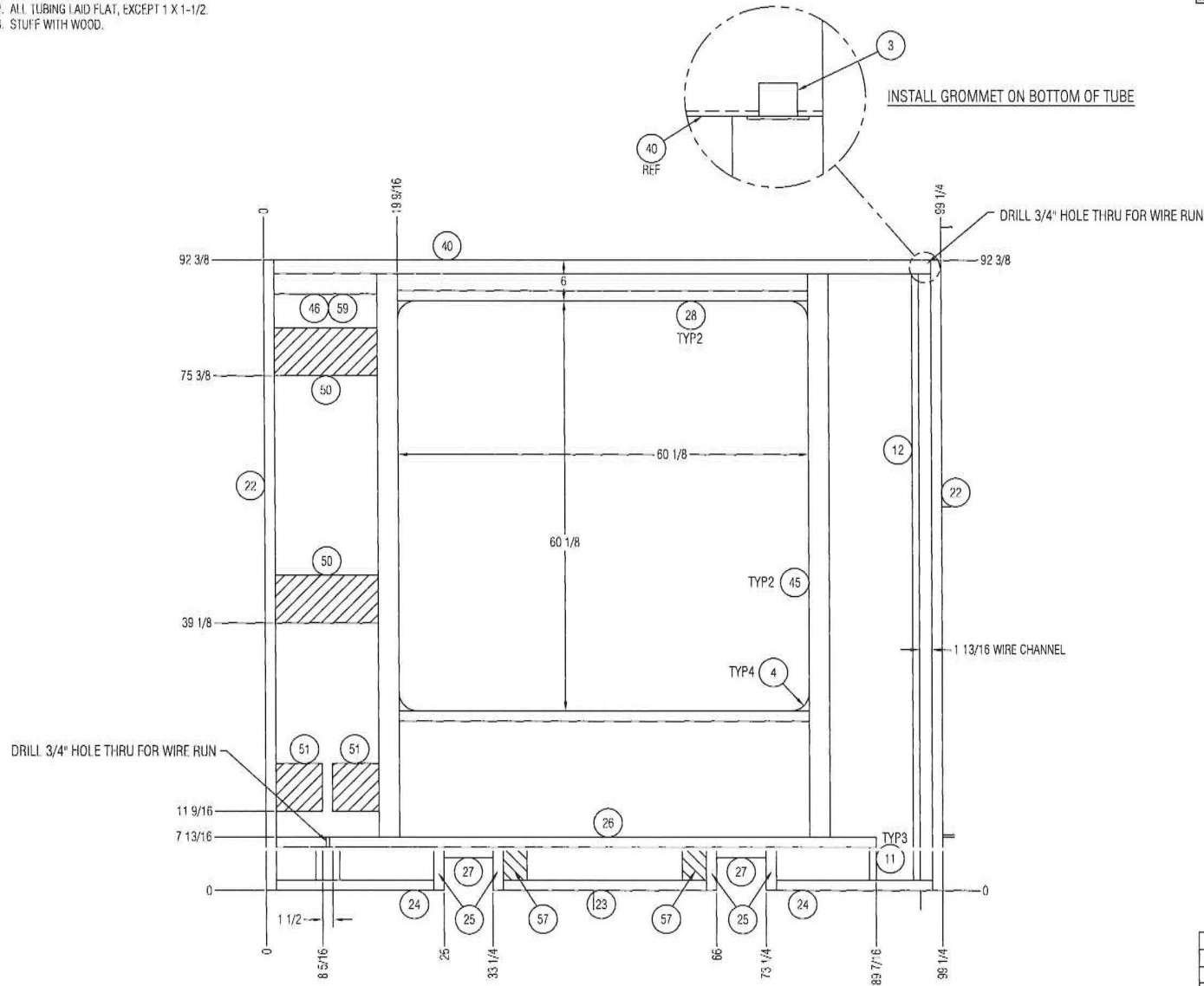
REV	CHANGE DESCRIPTION	BY	DATE	PCR
A	STUFF #61 (LADDER BACKER) WITH #61	JUG	5/2/21	3158
B	ADDED LADDER PREP BACKER	JUG	9/17/21	3650
C	SEE PAGE 2	VN	04-24	MC2025

1	62	LUMBER, 1 1/8 X 2 5/8 X 23 1/2
2	61	LUMBER, 1 1/8 X 2 5/8 X 88 1/2
2	60	PLYWOOD, 1 1/2 X 3 1/2 X 6 1/4
1	54	X 24
2	53	X 7 1/4
1	52	X 36 1/8
2	51	X 88 7/8 *STUFF
		AL TUBE, .090 1-1/2 X 3
1	29	X 73 1/4
2	28	X 80 1/2
1	27	X 96 1/4
		AL TUBE, .062 1-1/2 X 2
4	25	X 7 7/8
2	24	X 23
1	23	X 29 3/4
2	22	X 92 3/8
		AL TUBE, .040 1-1/2 X 1-1/2
1	14	X 6 3/8
1	13	X 17 1/2
1	12	X 88 7/8
		AL TUBE, .040 1 X 1-1/2
1	3	7101030 GROMMET, PLASTIC 3/4 X 3/4 LPC503
2	2	C01214887 PATTERN BLOCK, RAD DOOR 4.69" R

QUANTITY	REF NO.	PART NO.	MATERIAL OR PART DESCRIPTION
1	3	7101030	GROMMET, PLASTIC 3/4 X 3/4 LPC503
2	2	C01214887	PATTERN BLOCK, RAD DOOR 4.69" R
PLANT: LAMINATION			
MATERIAL OR PART DESCRIPTION			
CLASS CODE:			
COACHMEN R.V.			
A DIVISION OF FOREST RIVER INC.			
WALL ASSY, REAR			
CT 22 XG XL/MM	± .125"	± .063"	DO NOT SCALE
USED ON	± .1"	± .5"	DO NOT SCALE

1. VIEWED FROM INTERIOR
2. ALL TUBING LAID FLAT, EXCEPT 1 X 1-1/2.
3. STUFF WITH WOOD.

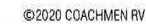
REV	CHANGE DESCRIPTION	BY	DATE	PCR
1	CHGD DOOR OPENING, WALL THICKNESS TO 1.5"	VN	08/20	MC2021
2	ADDED #46 & #59	JG	8/12/23	3650
3	SEE PAGE 2	REM	4/23/24	MC2025



1	59	LUMBER, 1 1/8 X 2 5/8 X 14 1/2
2	57	PLYWOOD, 1 1/2 X 3 1/2 X 4 3/4
2	51	PLYWOOD, 1 1/2 X 7 X 6 3/4
2	50	PLYWOOD, 1 1/2 X 7 X 15
1	46	X 15 1/16
2	45	X 82 9/16
		AL TUBE, .090 1-1/2 X 3
1	40	X 96 1/4
		AL TUBE, .065 1-1/2 X 2
2	28	X 60 1/8
2	27	X 7 1/4
1	26	X 73 3/4
		AL TUBE, .062 1-1/2 X 1-1/2
4	25	X 6 5/16
2	24	X 23
1	23	X 29 3/4
2	22	X 92 3/8
		AL TUBE, .040 1-1/2 X 1-1/2
1	12	X 88 7/8
3	11	X 4 13/16
		AL TUBE, .040 1 X 1 1/2
4	4	438681
1	3	7101030
		PATTERN BLOCK - TRUNK DOOR RADIUS
		GROMMET, PLASTIC 3/4 X 3/4 LPC503

		X				PLANT: LAMINATION
QUANTITY	OFF NO.		PART NO.			MATERIAL OR PART DESCRIPTION
	WT IN LBS					CLASS CODE:
TOLERANCE FOR UPPER SPECIFIC	UPPER		DATE		COACHMEN R.V. CO.	
WGT	OTHER		03/20		A DIVISION OF FOREST RIVER INC.	
± 1/8"	± 1/16"		APPRO		WALL ASSY, REAR	
± 1/25"	± .063"		DATE		SCALE	DRAWING #
± 1"	± 5"					F100181045
					DO NOT SCALE	REV C
						SHEET 1 OF 3

1. VIEWED FROM INTERIOR
2. ALL TUBING LAID FLAT, EXCEPT 1 X 1-1/2.



QUANTITY		REF NO. X		PLANT: LAMINATION	
TOLERANCE UNLESS OTHERWISE SPECIFIED		PART NO.		MATERIAL OR PART DESCRIPTION	
WOOD		OTHER		CLASS CODE:	
± 1/8" ± 1/16"		SPEC DATE		COACHMEN R.V. CO.	
± 1/25" ± 0.63"		VANCE 03/20		A DIVISION OF FOREST RIVER INC.	
± 1" ± 5/8"		APPRO DATE		WALL ASSY, REAR	
SCALE		DRAWING #		REV	
-		F100184584		1 OF 3	
DO NOT SCALE		SHEET		1 OF 3	