



# WORK INSTRUCTIONS

## MODEL Z AIR TRAVEL TRAILER

### OVER CURRENT PROTECTION

<b>RECALL:</b>	900003: Z AIR Overcurrent Protection Only - REV-A		
<b>PRODUCT:</b>	Model Z AIR 285 / 295 (VIN 0001 - 0105)		
<b>DATE:</b>	6/21/24	<b>LABOR RATE:</b>	0.6

#### Applies to:

#### Current Wiring Protection

Brinkley RV has determined that within the 12 volt DC system, there may be a lack of over current protection. The following instructions provide wiring locations, connections and components to reconfigure the mini breakers. The model and VIN of the unit will dictate the appropriate kit for this service. The VIN is required to order parts.

#### SAFETY:

Service, repair and installation instructions are written specifically for the use of professionally trained technicians, using proper tools in a shop environment. For safety, and to ensure the best results, **only professionally trained technicians** should perform the work described in this document.

Safety is, and should always be observed when performing any type of repair. ANSI (American National Standards Institute) has created a standardized labeling system for different levels of safety and danger. The labels below provide information regarding those levels of danger, and should be observed and adhered to at all times.

#### DANGER

The “DANGER” symbol above indicates an imminent hazard that, if not avoided or handled correctly, will result in death or serious injury.

#### WARNING

The “WARNING” symbol above is a sign that a procedure has a safety risk involved and may cause death, serious personal injury, severe product and/or property damage if not performed safely and within the parameters set forth in this document.

#### CAUTION

The “CAUTION” symbol above is a sign that a procedure has a safety risk involved and may cause personal injury, product and/or property damage if not performed safely and within the parameters set forth in this document.

#### + NOTICE

The “NOTICE” banner above is used to address best practices that should be utilized and do not commonly result in injury but may lead to property damage if not careful.

## ADVANCED CONTACT AND PRIOR AUTHORIZATION REQUIRED

### CLAIM REIMBURSEMENT PROCESSING:

All reimbursement requests with completed work orders, including any freight expenses, should be submitted via a claim in the Brinkley RV Dealer Portal. If you do not have access to our Portal, a claim can be emailed to [Warranty@BrinkleyRV.com](mailto:Warranty@BrinkleyRV.com).

### REQUIRED INFORMATION FOR IMMEDIATE REIMBURSEMENT PROCESSING INCLUDES:

1. The full 17 digit VIN;
2. The Retail Name if retail sold;
3. Dealer Name;
4. Dealer Address;
5. Dealer Phone Number;
6. Dealer Hourly Labor Rate;
7. Work Order detailing the work performed and labor time.
8. Photo of completed repair required.

Reimbursement checks for claims submitted with all requested information are issued weekly.

K110836 - REC - 900003 Model Z Air 12V O/C Protection (VIN 0001-0105)

Part Number	Description	Qty
100468	30 AMP MINI BREAKER	1
100948	MINI BREAKER NUTS	2
102274	SOLID COPPER POWER BAR	1

### In addition to standard shop tools, the following specialized tools are required:

1. Torque wrench that measures in in-lbs
2. 3/8" socket
3. Screw gun with #2 square drive bit



### ⚠ CAUTION

Always wear Personal Protection Equipment (PPE), such as eye protection, ear protection, gloves and possibly a full face shield depending on the nature of the task to be performed.



**⚠ WARNING**

Make sure the battery disconnect switches are turned off and the unit is unplugged from shore power before beginning! Failure to do so may cause equipment damage and serious injury or death!

**WORK INSTRUCTIONS:**

1. READ AND UNDERSTAND ALL INSTRUCTIONS PRIOR TO BEGINNING WORK.
2. Locate mini breakers under the coach below off door side cargo compartment (Figure 1).
3. Label the wires per diagram (Figure 2).

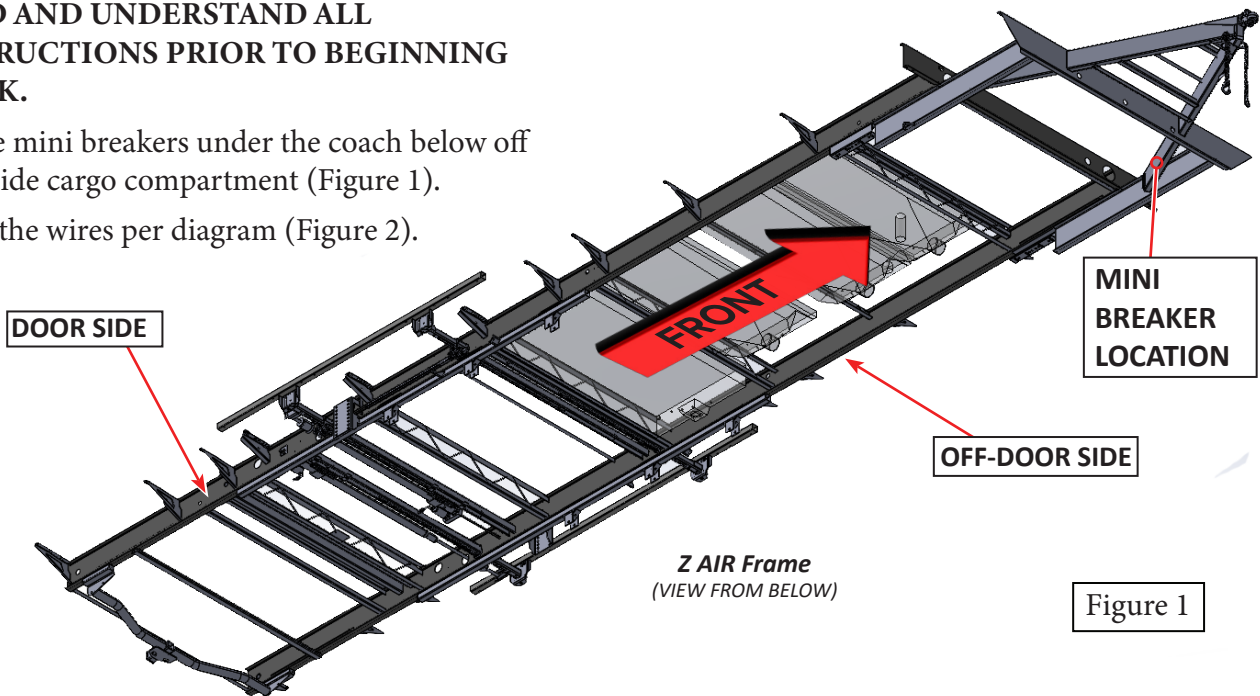
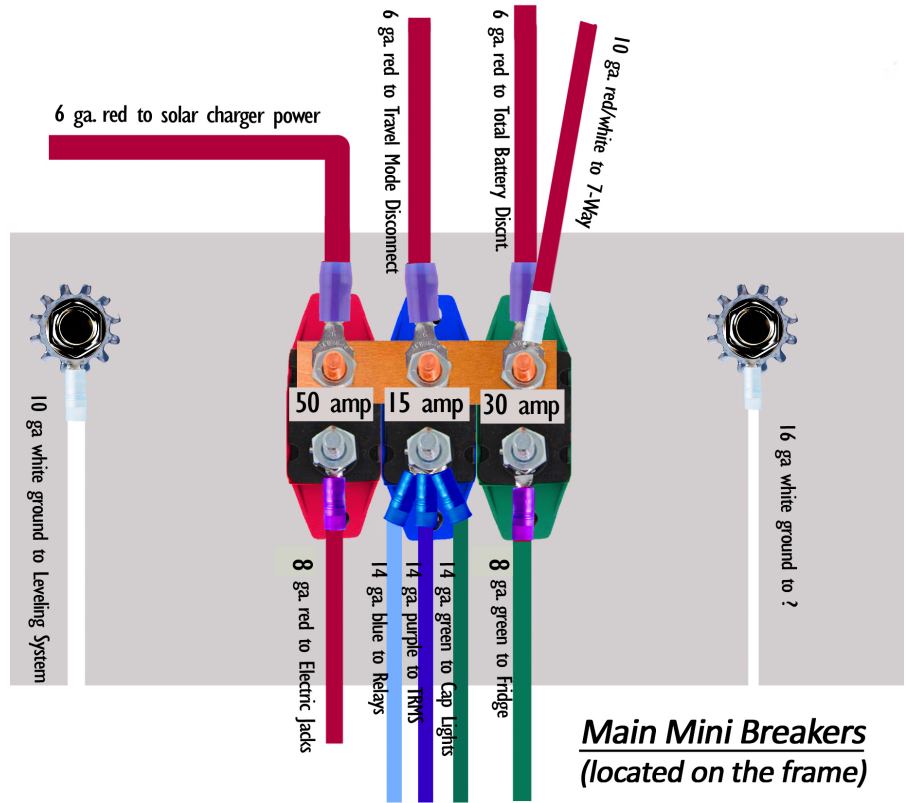


Figure 1

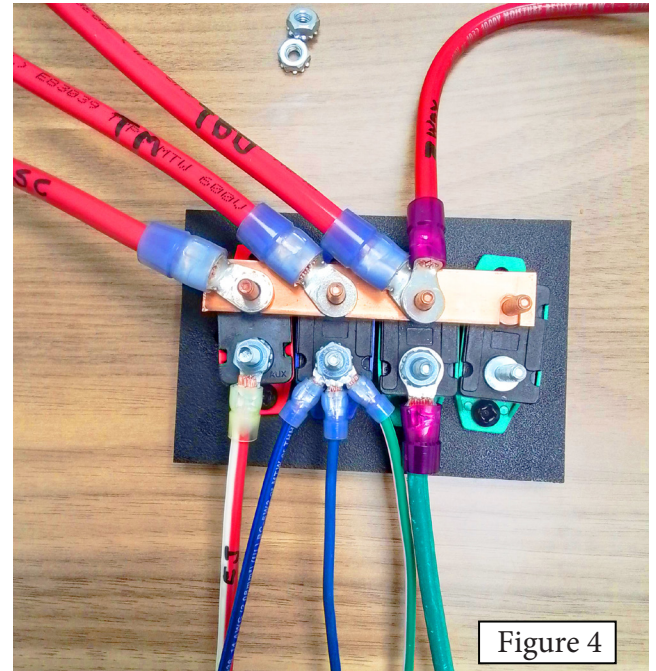
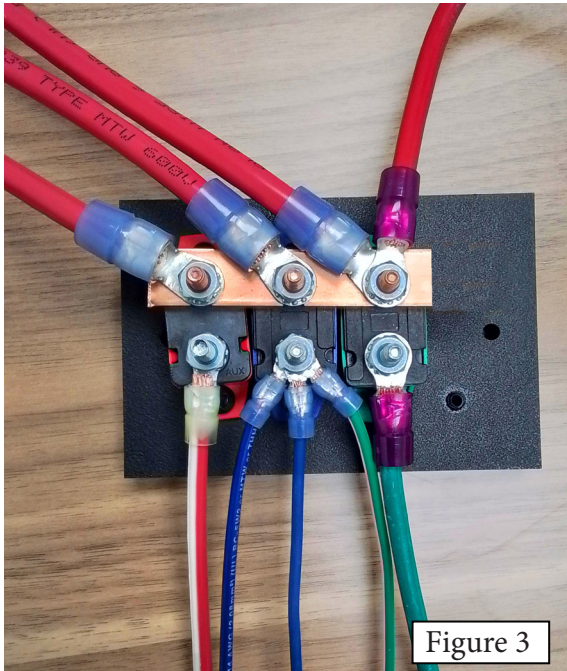


**Main Mini Breakers**  
(located on the frame)

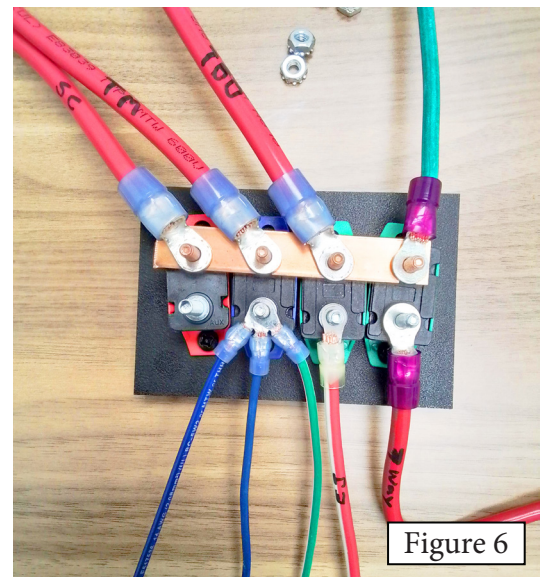
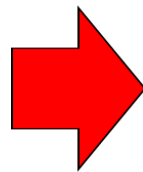
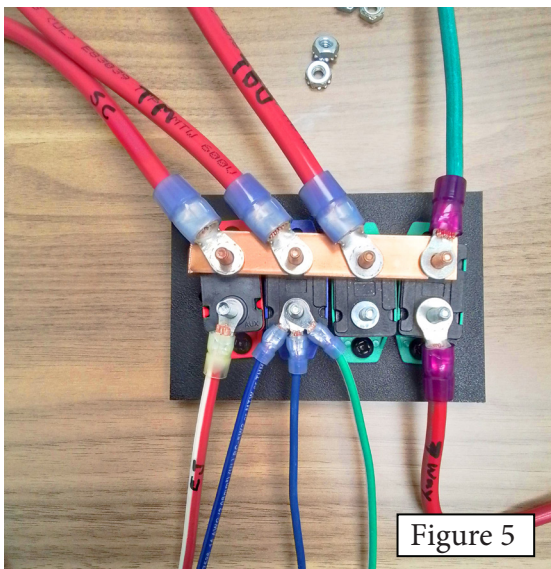
Figure 2



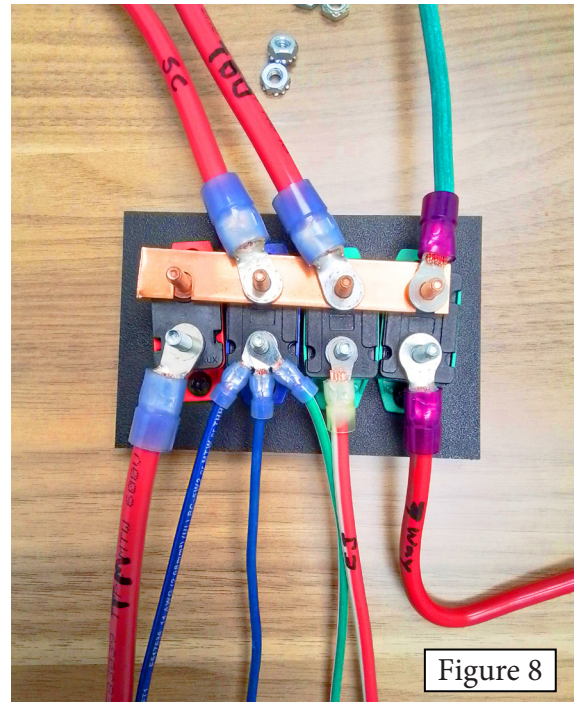
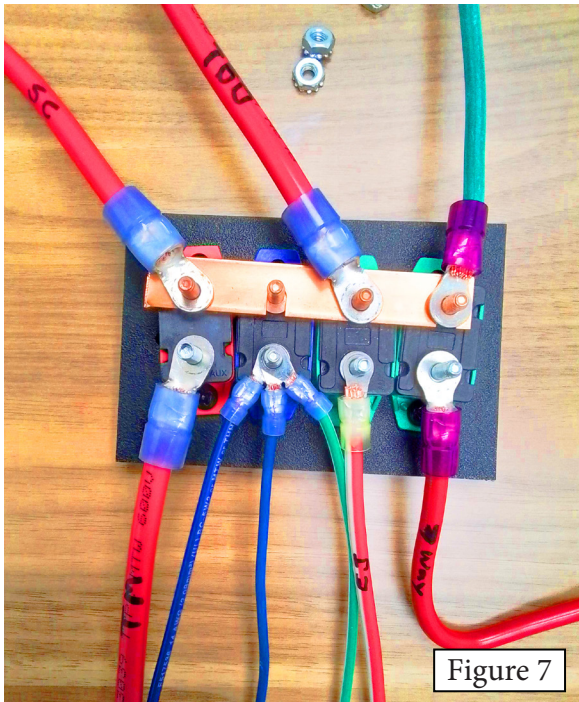
- Loosen top (copper bus bar side) nuts on mini breakers. Install new 30 amp auto reset breaker (part #100468) and replace the 3 position copper bus bar (P/N 102274) with the new copper bus bar (cut the provided 6 position bar down to 4 positions). Then remove all nuts across the top (copper) of mini breakers. Retain nuts for later use (Figure 3 and Figure 4).



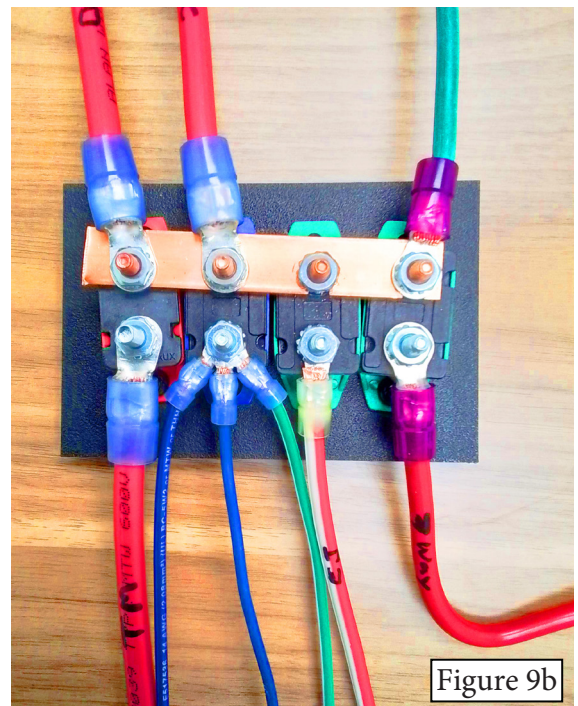
- Move 8ga red 7-way wire from the top of existing 30 amp breaker to the bottom of the new 30 amp breaker. Loosen and retain all nuts from the bottom side of the mini breakers (Figure 5).
- Move 8 ga green refer wire from the bottom (silver) of the original 30 amp breaker to the top (copper) of the new 30 amp breaker. Then move the 10ga red and white electric jack wire from the bottom (silver) of the 50 amp breaker to the bottom (silver) of the original 30 amp breaker (Figure 6).



7. Move 6ga red travel mode wire to the from the top (copper) of the 15 amp mini breaker to the bottom (silver) of the 50amp breaker (Figure 7), then move 6ga red solar charge wire from the top (copper) 50 amp breaker to the top (copper) of the 15a breaker (Figure 8).



8. Move 6ga red total battery disconnect wire from the top of the original 30a breaker to the top of 50a breaker, then replace and torque all nuts at all locations to 24 in-lbs (Figure 9a and Figure 9b).



9. Spray contacts with Cyclo Battery Protectant and Sealant spray (or equivalent-not provided) (Figure 10).
10. Repair complete.

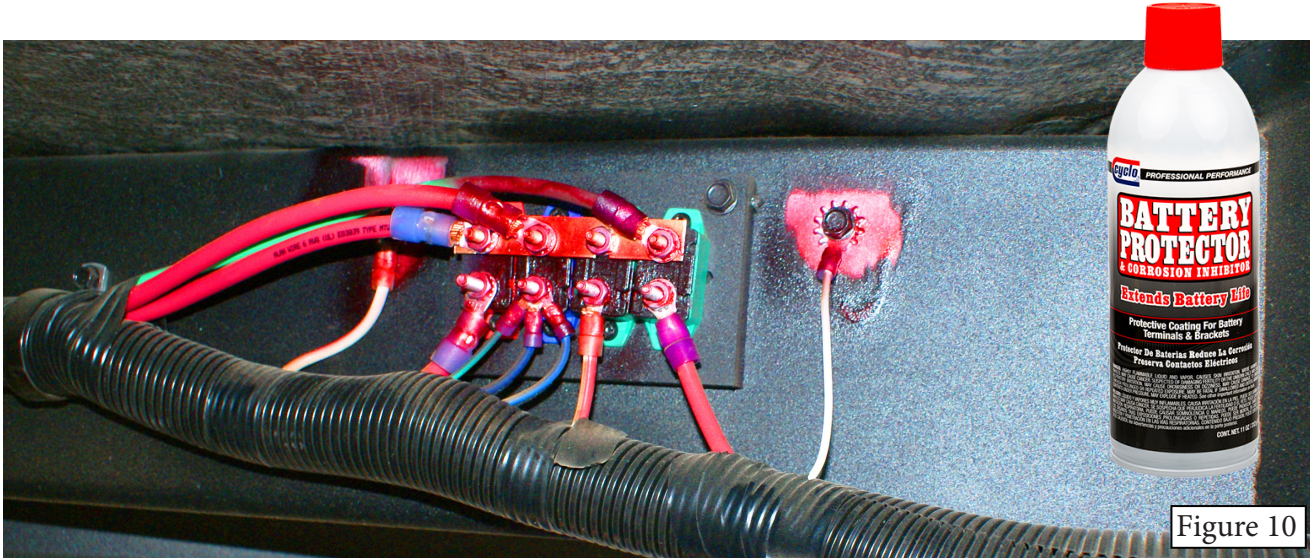
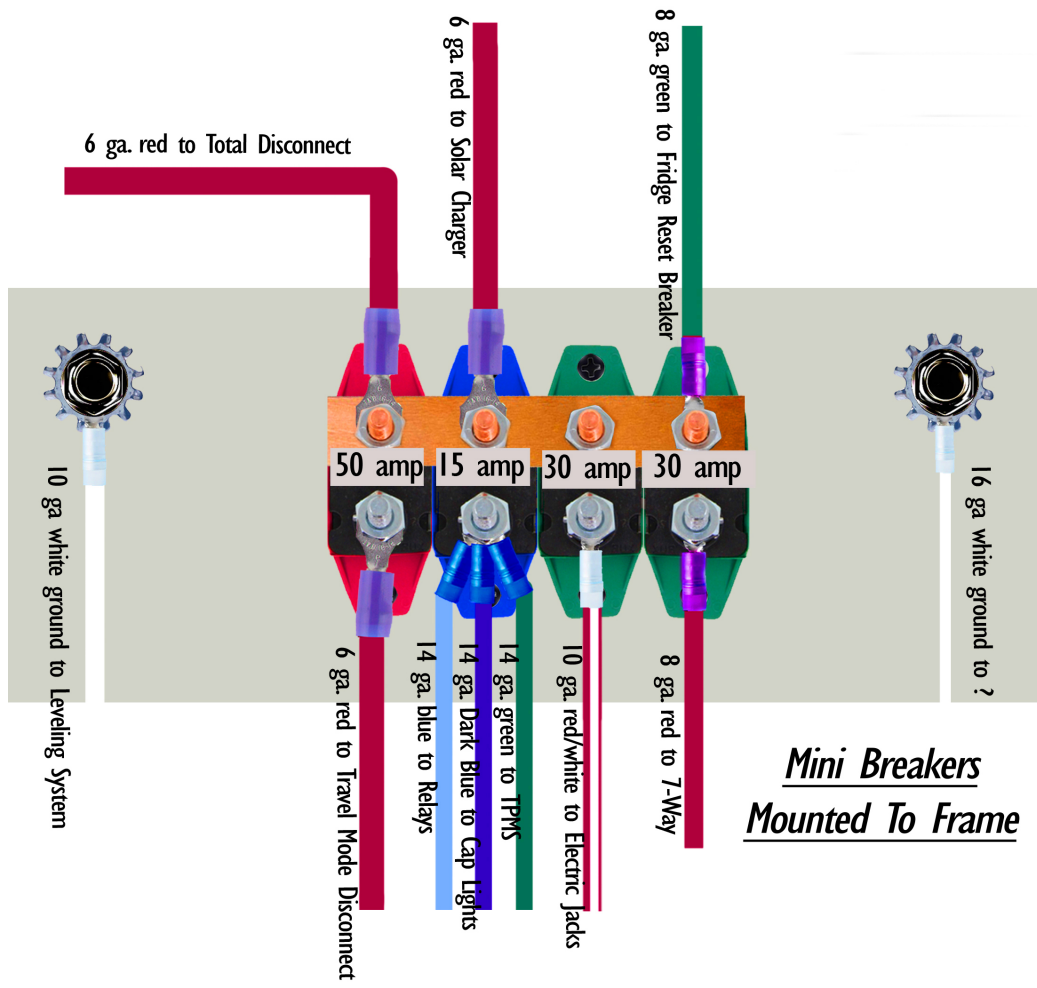


Figure 10



Finished Wiring Configuration