

NOTE: The information in Technical Service Bulletins are intended for use by trained, professional technicians with the knowledge, tools, and equipment to do the job properly and safely. It informs these technicians of conditions that may occur on some vehicles or provides information that could assist in proper vehicle service. These procedures should not be performed by "do-it-yourselfers". Do not assume that the condition described affects your bus. Contact Endera customer service to determine whether the Bulletin applies to your vehicle.



24-1006

08/15/2024

TECHNICAL SERVICE BULLETIN

School Bus Seat Fastener – Missing Washer

Model:

Endera:	Condition:	Mfg. Date:	Communication ID:
SRW School Buses and MFSAB	All Passenger Seat Mounting Fasteners	<i>April 21, 2021 - January 11, 2024</i>	24V431

Summary:

School Bus and MFSAB seat fasteners may be missing a washer from the assembly process.

Issue:

Endera School Buses and MFSABs manufactured between the dates listed above have the potential of a washer missing in the bolt assembly that fastens the seat to the floor and to the bus wall.

Action:

Inspection of the bolt assemblies that fastens the seat to the bus. Verify that there is a washer installed at each mounting point. Follow the Seat Fastener Verification Procedure below.

If a washer is found to be missing, follow the Seat Fastener Procedure below.

Parts:

Service Part #	Qty.	Description	Notes:
Fastenal# 1133860	1	7/16 x 1 1/2" - Thru-Hardened Yellow Zinc Finish Steel USS General Purpose Flat Washer	

Labor Times:

Description	Operation No.	Time
Inspect seats mounts for washer	1	0.20 Hrs.
Remove and replace bolt and washer assembly (per assembly)	2	0.10 Hrs.

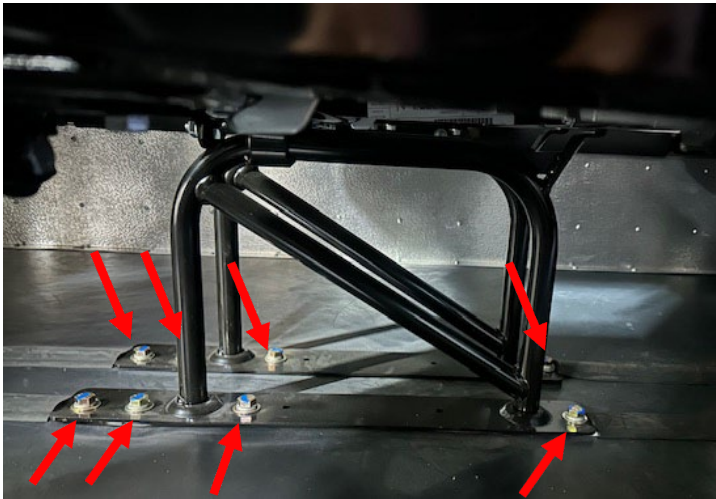
Service Procedure:

Seat Fastener Verification

1. Visually inspect all fasteners on each seat to verify the washer is in place.



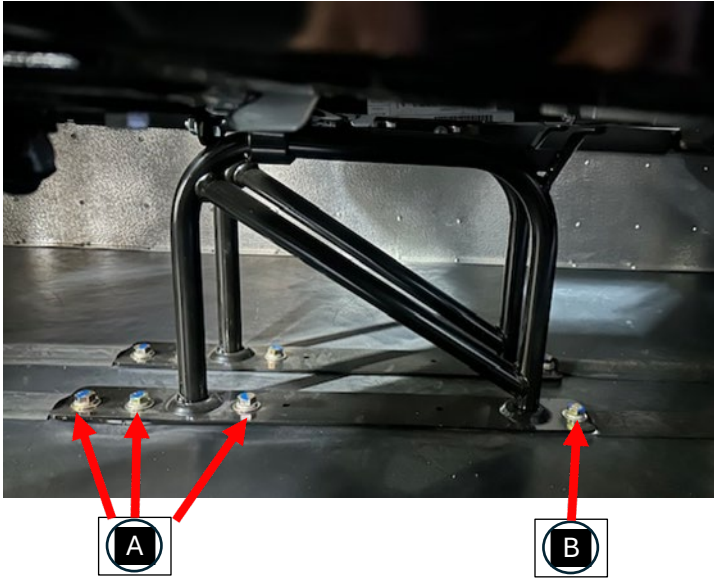
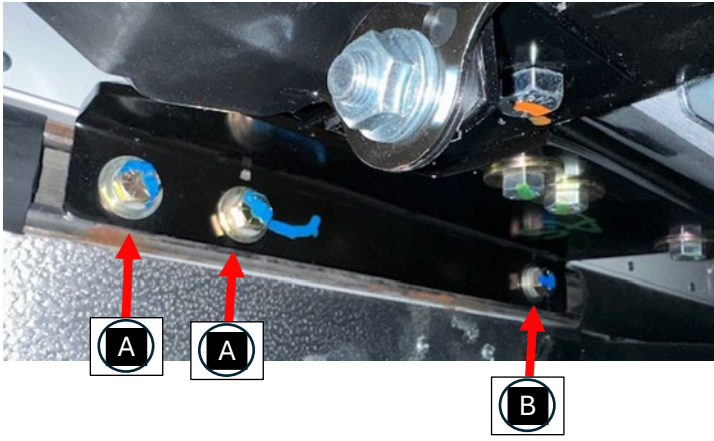
Seat frame to wall (shown from rear of seat)



Stanchion mount seat to floor (shown from aisleway)

Seat Fastener Replacement

1. Remove the fastener requiring a washer. Do not remove multiple fasteners simultaneously as this may change the seat placement.
2. Install washer onto the bolt.
3. Reinstall bolt/washer assembly. Torque: A = 50 ft lbs. B = 27 ft.
4. Using a paint marker, mark the bolt when torqued.
5. Repeat, as necessary.



6. End Process