

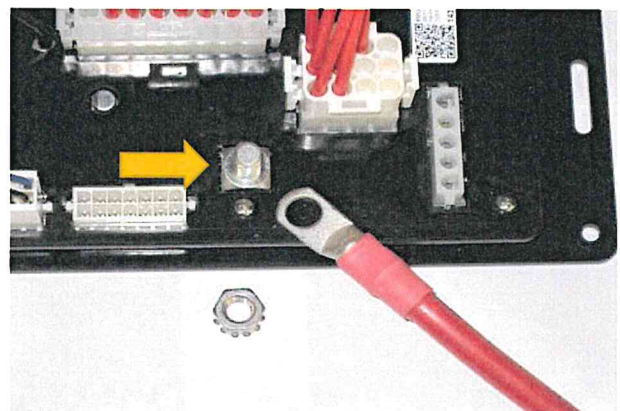
The G9 protection Module is to be installed onto the G9 ECM with the following steps:

Step 1; locate the G9 at bed foot area

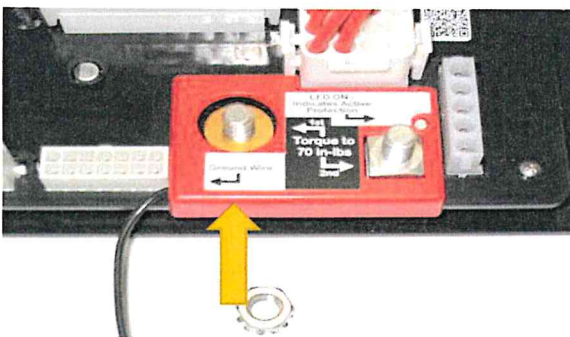
Step 2; Install the G9 Protection Module as described below.



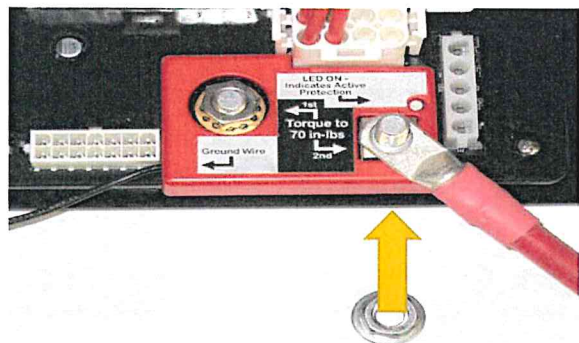
(2.1) Locate the Battery Disconnect at Entry door and turn off.



(2.2) Remove the external tooth washer nut and existing power cable from the G9 ECM power input stud.



(2.3) Attach G9 Protection module onto the G9 Power Stud with external tooth washer nut and **Torque to 70 in/lbs.**



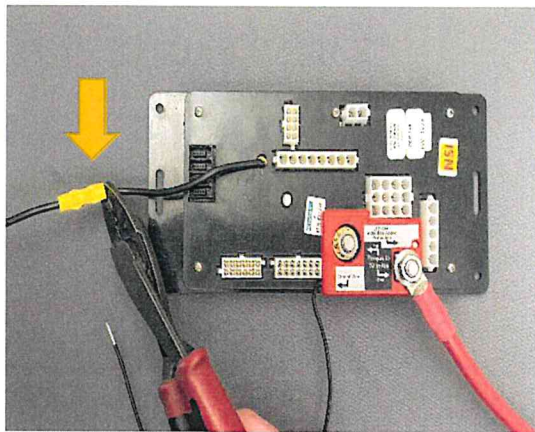
(2.4) Install Power Cable onto G9 Protection Module stud with external tooth washer nut and **Torque to 70 in/lbs.**



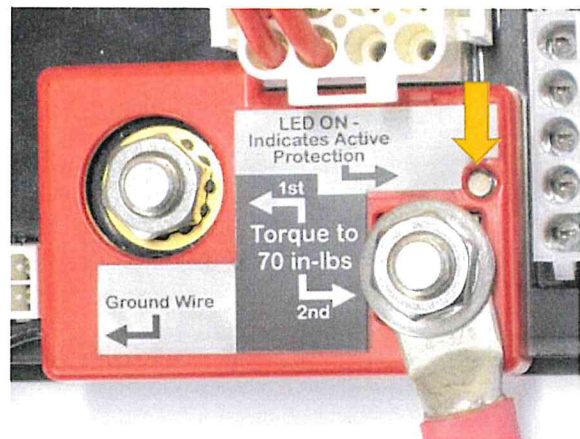
The G9 protection Module is to be installed onto the G9 ECM with the following steps:

Step 1; locate the G9 at bed foot area

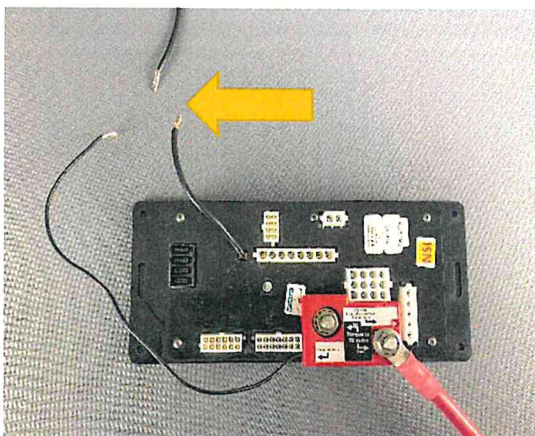
Step 2; Install the G9 Protection Module as described below.



(2.5) Locate existing G9 ground wire connection and disconnect or cut wire.



(2.7) Turn on Battery disconnect Switch and verify that the LED illuminates.



(2.6) Strip each Ground wire at least 10mm and splice the G9 ECM Ground, the protection Module Ground and the Existing Ground wire together.

This concludes the G9 Protection Module installation.