

MODEL: Revero GT and GTS, and GS-6

Type: Safety Recall Campaign

Date: July 2024

System: Electrical

TITLE: Headlamp Control Unit Replacement Safety Recall Campaign

PRIORITY: Karma vehicles in the attached list (pg. 4~5)

APPLICABILITY: Model Year 2020-2022 Karma Vehicles

Model	Model Years
Revero GT	2020-2021
Revero GTS	2020-2021
GS-6	2021-2022

MARKET REGIONS: United States and Canada

PURPOSE: This document highlights a procedure to update the software of the existing headlamps with software found in replacement electronic control modules (ECMs) in both right hand (“RH”) side and left hand side (“LH”). Vehicles manufactured during model years 2020-2022 may intermittently fail to activate the front turn signal upon driver request during normal driving conditions. This condition may potentially cause a vehicle crash or risk of injury. Low beam, high beam, rear turn signal, position, and other lighting functionality remain fully functional. If the condition exists, the driver will be notified of the issue by a headlamp warning light on the cluster and a fast-blinking indicator signal when the turn signal is activated. The affected vehicles that may not conform to the requirements of FMVSS 108 Lamps, Reflective Devices, and associated equipment, and CMVSS 108 Lamps, Reflective Devices, and Associated Equipment, in Canada.

This document supersedes any and all previous documents in workshop manuals, wiring diagrams, training documents, parts catalog, labor operations, etc. While the method of repair is approved as indicated, performing and verifying the repair is proper per this service bulletin is the responsibility of the technician.

Safety Recall Notice (Remedy)

Model Year 2021-2022 Karma GS-6, Model Year 2020-2021 Karma GT, Model Year 2020-2021 Karma Revero GTS - Headlamp Control Unit Replacement Safety Recall Campaign

IMPORTANT REMINDER ON VEHICLES AFFECTED BY SAFETY & COMPLIANCE RECALLS

New Vehicles in Dealer Inventory: It is a violation of Federal law for a dealer to deliver a new motor vehicle or any new or used item of motor vehicle equipment (including a tire) covered by this notification under a sale or lease until the defect or noncompliance is remedied. By law, dealers must correct, prior to delivery for sale or lease, any vehicle that fails to comply with an applicable Federal Motor Vehicle Safety Standard or that contains a defect relating to motor vehicle safety. **Pre-Owned Vehicles in Dealer Inventory:** Dealers should not deliver any pre-owned vehicles in their inventory which are involved in a safety or compliance recall until the defect has been remedied.

Karma Automotive Bulletins and service documents are intended for use by experienced and trained Technicians. If you lack the skills, tools, equipment and a suitable workshop for any procedure described in this document, we suggest you leave such repairs to an Authorized Karma Service Provider or qualified service center. See your service provider for advice on whether your vehicle may benefit from the information contained within this document.

The information contained in the Karma Bulletin is accurate at the date of publication. However, Karma Automotive regularly updates technical information. Please check with your Karma Automotive Service Provider that the bulletin you intend to use contains the latest available information.

MODEL: Revero GT and GTS, and GS-6

Type: Safety Recall Campaign

Date: July 2024

System: Electrical

TITLE: Headlamp Control Unit Replacement Safety Recall Campaign

TOOLS REQUIRED: All component removal MUST be performed using hand tools.

1. Create a TSS case and follow the instructions
2. Remove front fascia to access the headlamps
3. Remove headlamps, remove the headlamp control module (one per each lamp)
4. Install the new control module units provided in service kit (C161176000300), reassemble headlamp units
5. Reinstall headlamps and perform alignment of lamps as necessary
6. Apply Campaign label
7. Complete TSS case with a required, or requested images.

NOTE:

To avoid damaging the fascia:

- Remove carefully and use assistance as needed.
- If the headlamps are requested to be returned, please pack with extra care, follow TSS procedure

Required Tools: 10mm socket and 3/8" drive ratchet, various extensions as needed, panel and clip removal fork, T30 bit, T15, torque wrench, 23mm wheel lug socket and breaker bar for wheel removal, image capturing phone or camera, anti-static mat.



Removal of components and installation, should be performed with hand tools.

Karma Automotive Bulletins and service documents are intended for use by experienced and trained Technicians. If you lack the skills, tools, equipment and a suitable workshop for any procedure described in this document, we suggest you leave such repairs to an Authorized Karma Service Provider or qualified service center. See your service provider for advice on whether your vehicle may benefit from the information contained within this document. The information contained in the Karma Bulletin is accurate at the date of publication. However, Karma Automotive regularly updates technical information. Please check with your Karma Automotive Service Provider that the bulletin you intend to use contains the latest available information.

MODEL: Revero GT and GTS, and GS-6

Type: Safety Recall Campaign

Date: July 2024

System: Electrical

TITLE: Headlamp Control Unit Replacement Safety Recall Campaign

To address this bulletin, you will have received the headlamp module kit C161176000300 including a label, gaskets, and fasteners.

Each Kit will contain:

Two (2) Headlamp Electronic Module Assemblies

Two (2) Gasket - HL Electronic Module

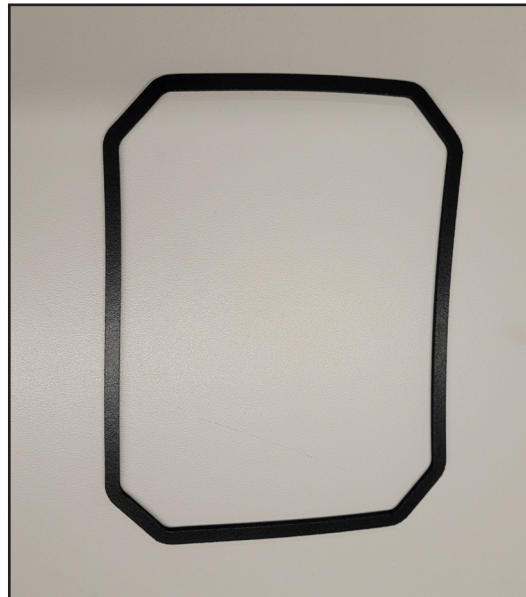
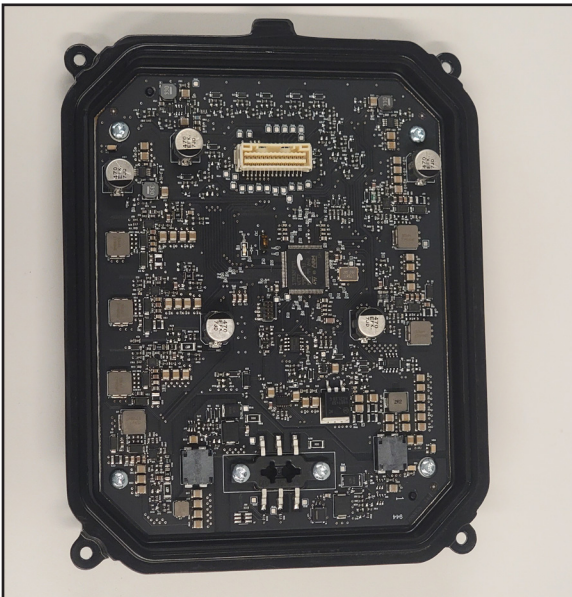
Eight (8) Screws - 4 for each new HL Electronic Module

One (1) C149950001101 Label - Campaign

KARMA AUTOMOTIVE INC.	
Campaign No.:	_____
Description:	_____
Retailer Code:	_____
Repair Date:	___ / ___ / ___
For questions, please contact Client Services at 1-855-565-2762	
C149950001101	

These kits are composed components of the control module (shown below) and 4 (T15) new fasteners, per side, and a new gaskets, again 1 per side.

Fastening torque is 14 in-lbs. The gasket should be installed on the headlamp body gasket channel as described in the bulletin below.



Karma Automotive Bulletins and service documents are intended for use by experienced and trained Technicians. If you lack the skills, tools, equipment and a suitable workshop for any procedure described in this document, we suggest you leave such repairs to an Authorized Karma Service Provider or qualified service center. See your service provider for advice on whether your vehicle may benefit from the information contained within this document. The information contained in the Karma Bulletin is accurate at the date of publication. However, Karma Automotive regularly updates technical information. Please check with your Karma Automotive Service Provider that the bulletin you intend to use contains the latest available information.

MODEL: Revero GT and GTS, and GS-6

Type: Safety Recall Campaign

Date: July 2024

System: Electrical

TITLE: Headlamp Control Unit Replacement Safety Recall Campaign

1. Rack the vehicle. Loosen the wheels with the appropriate 23mm socket and a breaker bar (Fig. 1). Lift to a comfortable height to remove the wheels.

(Reassembly torque is 220Nm.)

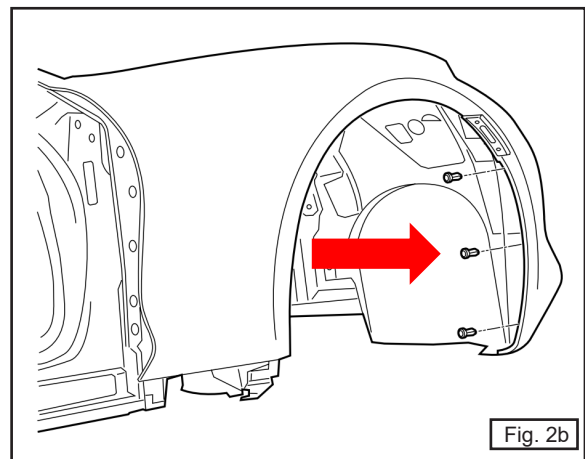
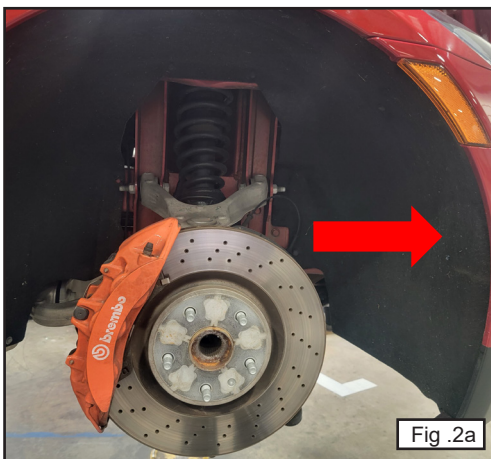
Prepare to remove the front bumper:

Remove the wheel well arch liners, both sides.

Both the Right-hand side (“RH”) and Left-hand side (“LH”) side of the vehicle is assembled symmetrically unless otherwise stated, repeat a RH illustrated procedure on the LH.



2. Remove the 10 (ten clips on each liner) begin with the front three body clips, of the wheel liner, on each side (Fig.2a, Fig. 2b).



Karma Automotive Bulletins and service documents are intended for use by experienced and trained Technicians. If you lack the skills, tools, equipment and a suitable workshop for any procedure described in this document, we suggest you leave such repairs to an Authorized Karma Service Provider or qualified service center. See your service provider for advice on whether your vehicle may benefit from the information contained within this document. The information contained in the Karma Bulletin is accurate at the date of publication. However, Karma Automotive regularly updates technical information. Please check with your Karma Automotive Service Provider that the bulletin you intend to use contains the latest available information.

MODEL: Revero GT and GTS, and GS-6

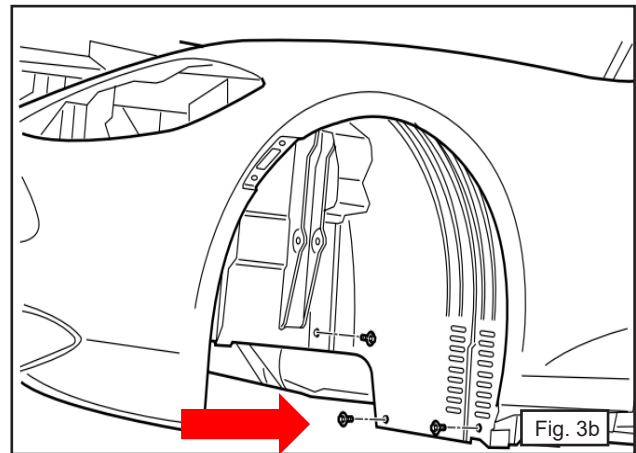
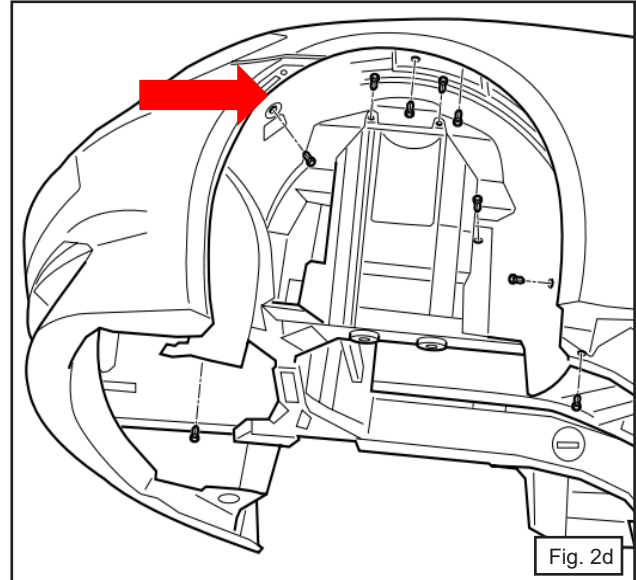
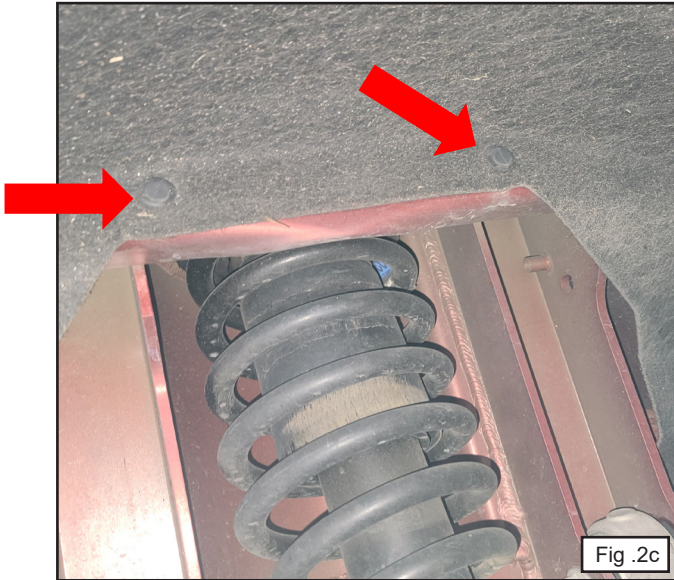
Type: Safety Recall Campaign

Date: July 2024

System: Electrical

TITLE: Headlamp Control Unit Replacement Safety Recall Campaign

Continue around the liner and remove the remainder body clips of the wheel liner (Fig.2c, Fig. 2d).



The aluminum wheel liner bracket will stay attached to the wheel liner upon removal (Fig. 3a and Fig.3b).

Karma Automotive Bulletins and service documents are intended for use by experienced and trained Technicians. If you lack the skills, tools, equipment and a suitable workshop for any procedure described in this document, we suggest you leave such repairs to an Authorized Karma Service Provider or qualified service center. See your service provider for advice on whether your vehicle may benefit from the information contained within this document. The information contained in the Karma Bulletin is accurate at the date of publication. However, Karma Automotive regularly updates technical information. Please check with your Karma Automotive Service Provider that the bulletin you intend to use contains the latest available information.

MODEL: Revero GT and GTS, and GS-6

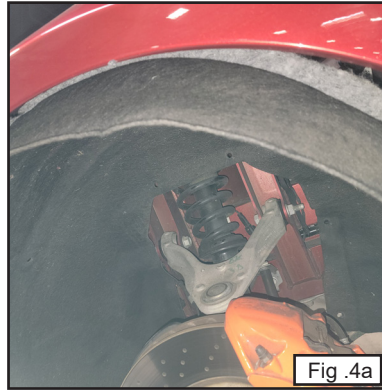
Type: Safety Recall Campaign

Date: July 2024

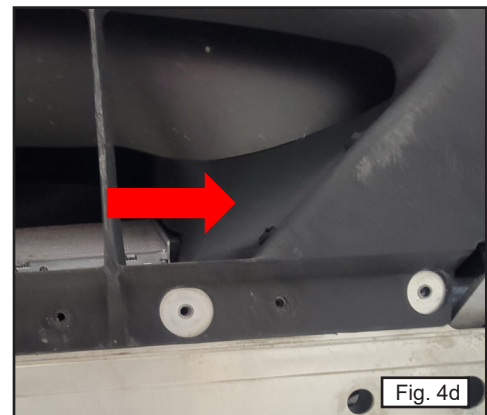
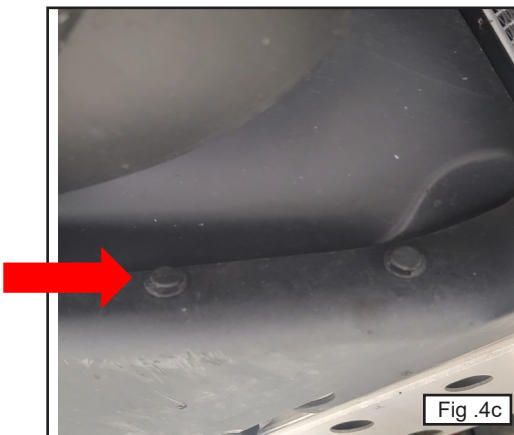
System: Electrical

TITLE: Headlamp Control Unit Replacement Safety Recall Campaign

3. Once the clips have been removed, pull down the wheel liner, remove, and set aside (Fig. 4a).



4. Proceed to remove the clips for the front fascia (Fig. 4b). Look for 4 clips on the underside, 2 LH and 2 RH (Fig. 4c and Fig. 4d).



Karma Automotive Bulletins and service documents are intended for use by experienced and trained Technicians. If you lack the skills, tools, equipment and a suitable workshop for any procedure described in this document, we suggest you leave such repairs to an Authorized Karma Service Provider or qualified service center. See your service provider for advice on whether your vehicle may benefit from the information contained within this document. The information contained in the Karma Bulletin is accurate at the date of publication. However, Karma Automotive regularly updates technical information. Please check with your Karma Automotive Service Provider that the bulletin you intend to use contains the latest available information.

MODEL: Revero GT and GTS, and GS-6

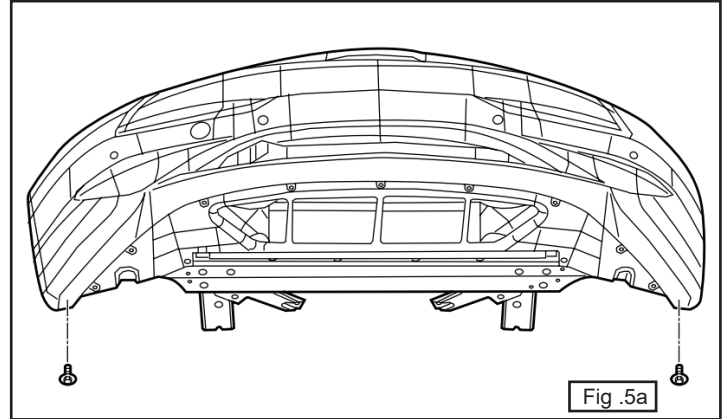
Type: Safety Recall Campaign

Date: July 2024

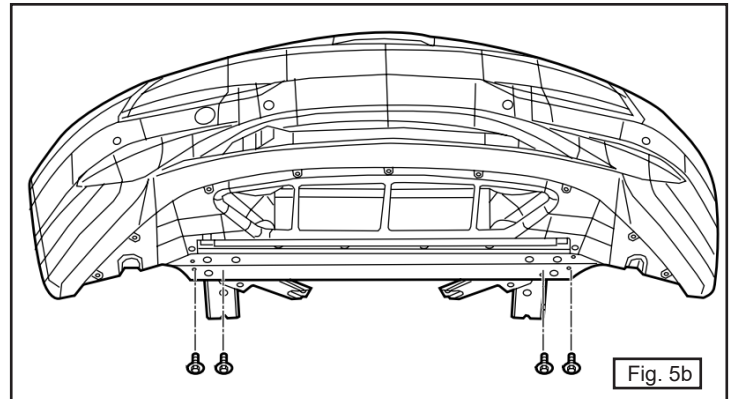
System: Electrical

TITLE: Headlamp Control Unit Replacement Safety Recall Campaign

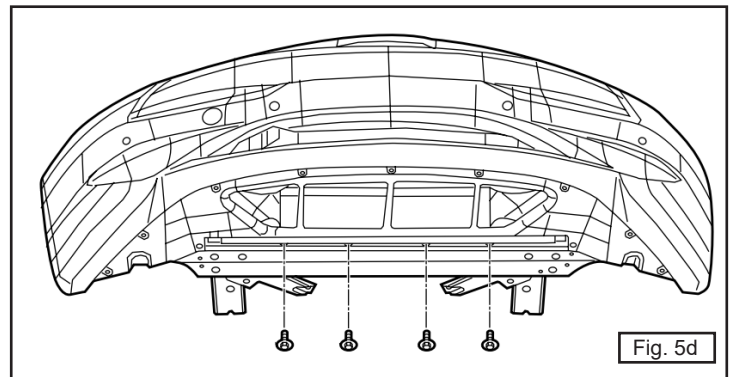
5. Remove the (4) 10mm bolts securing LH & RH side air dams to the front bumper fascia (Fig. 5a). Reassembly Torque is 3.5 Nm.



6. Remove the clips securing the LH and RH side air dams, and center air dam to the front bumper fascia (Fig. 5b).



7. Remove the (6) bolts securing the center air dam to the front bumper fascia (Fig. 5c and Fig. 5d). Reassembly Torque is 4.5 +/-0.5Nm.



Karma Automotive Bulletins and service documents are intended for use by experienced and trained Technicians. If you lack the skills, tools, equipment and a suitable workshop for any procedure described in this document, we suggest you leave such repairs to an Authorized Karma Service Provider or qualified service center. See your service provider for advice on whether your vehicle may benefit from the information contained within this document. The information contained in the Karma Bulletin is accurate at the date of publication. However, Karma Automotive regularly updates technical information. Please check with your Karma Automotive Service Provider that the bulletin you intend to use contains the latest available information.

MODEL: Revero GT and GTS, and GS-6

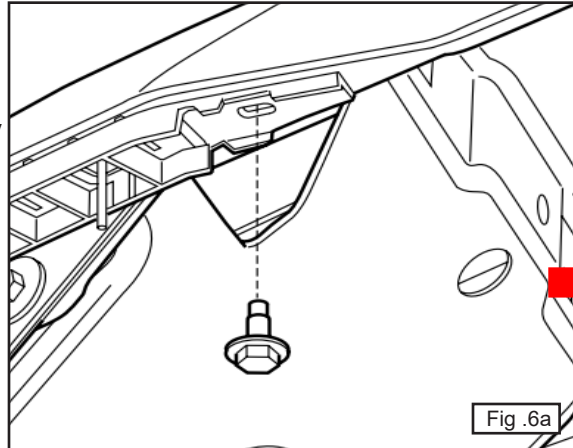
Type: Safety Recall Campaign

Date: July 2024

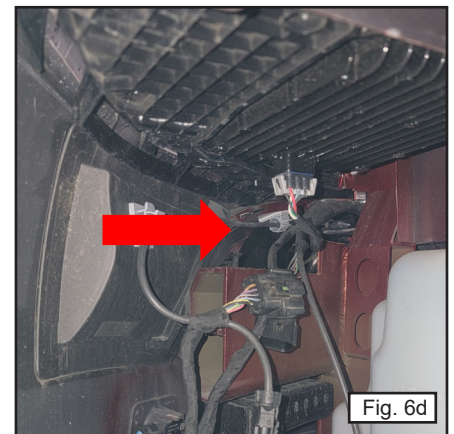
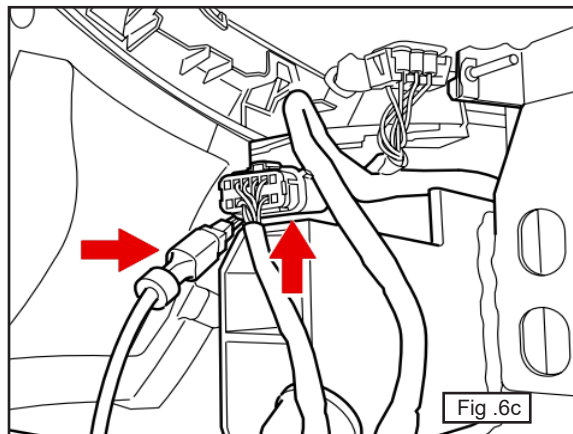
System: Electrical

TITLE: Headlamp Control Unit Replacement Safety Recall Campaign

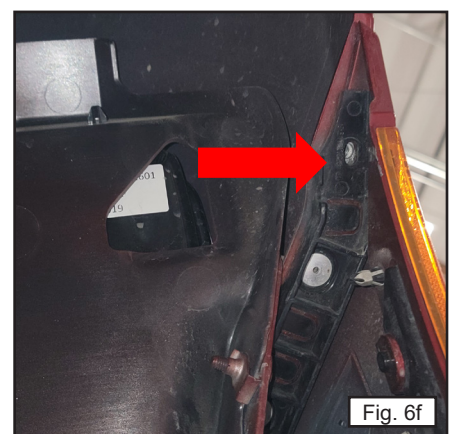
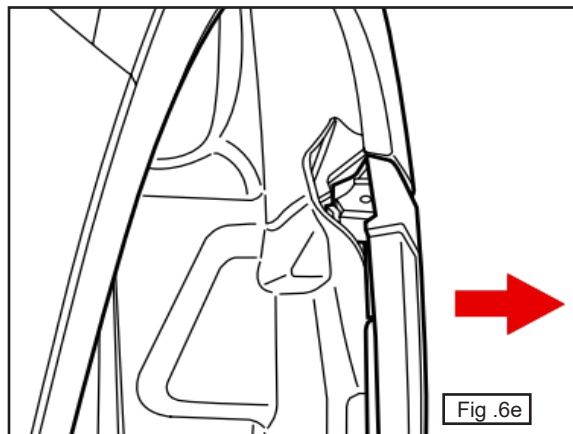
8. Remove the bolt securing fascia to fender. Perform on both sides (Fig. 6a, and Fig. 6b) Reassembly Torque is 3.5 Nm.



9. Disconnect the electrical harness connectors from fascia harness (left side) (Fig.6c and Fig.6d).



10. Using a small tool, slightly open the retainer clip and carefully pull front fascia from the clip retainer. Perform on both sides (Fig.6e and Fig.6f).



Karma Automotive Bulletins and service documents are intended for use by experienced and trained Technicians. If you lack the skills, tools, equipment and a suitable workshop for any procedure described in this document, we suggest you leave such repairs to an Authorized Karma Service Provider or qualified service center. See your service provider for advice on whether your vehicle may benefit from the information contained within this document. The information contained in the Karma Bulletin is accurate at the date of publication. However, Karma Automotive regularly updates technical information. Please check with your Karma Automotive Service Provider that the bulletin you intend to use contains the latest available information.

MODEL: Revero GT and GTS, and GS-6

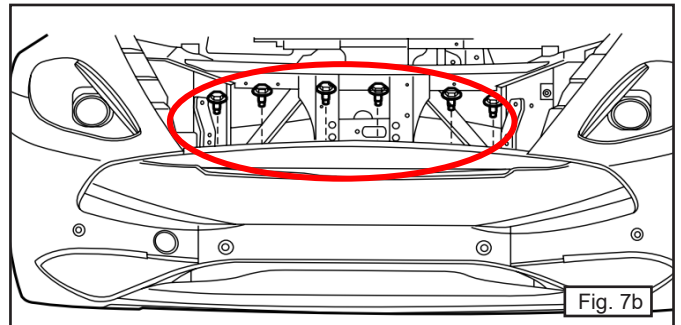
Type: Safety Recall Campaign

Date: July 2024

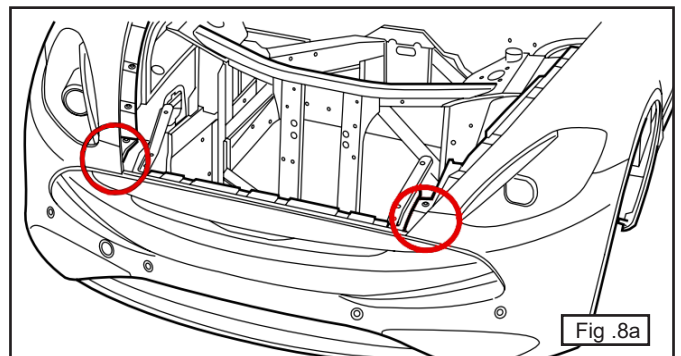
System: Electrical

TITLE: Headlamp Control Unit Replacement Safety Recall Campaign

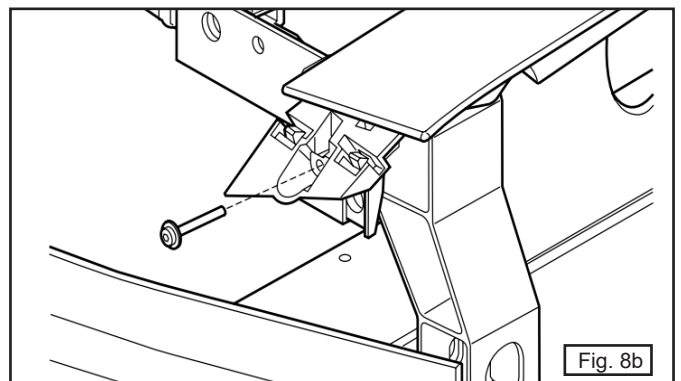
11. Remove the (6) T30 bolts securing the fascia to the front support (Fig. 7a and Fig. 7b). Reassembly Torque is 3.5 Nm.



12. Carefully pull the fascia from the side support bracket retaining tabs to release the fascia from the clips (Fig. 8a). Reassembly Torque is 3.5 Nm.



Important: If the side support bracket retaining clip(s) are damaged, or if the front fascia side support bracket(s) must be replaced (Fig. 8b).



Karma Automotive Bulletins and service documents are intended for use by experienced and trained Technicians. If you lack the skills, tools, equipment and a suitable workshop for any procedure described in this document, we suggest you leave such repairs to an Authorized Karma Service Provider or qualified service center. See your service provider for advice on whether your vehicle may benefit from the information contained within this document. The information contained in the Karma Bulletin is accurate at the date of publication. However, Karma Automotive regularly updates technical information. Please check with your Karma Automotive Service Provider that the bulletin you intend to use contains the latest available information.

MODEL: Revero GT and GTS, and GS-6

Type: Safety Recall Campaign

Date: July 2024

System: Electrical

TITLE: Headlamp Control Unit Replacement Safety Recall Campaign

13. With assistance, remove the front fascia/bumper assembly. have a bumper cover stand or a cloth covered table ready to place it on (Fig. 9a and Fig.9b). Provide images of this step for the TSS case.



Fig .9a

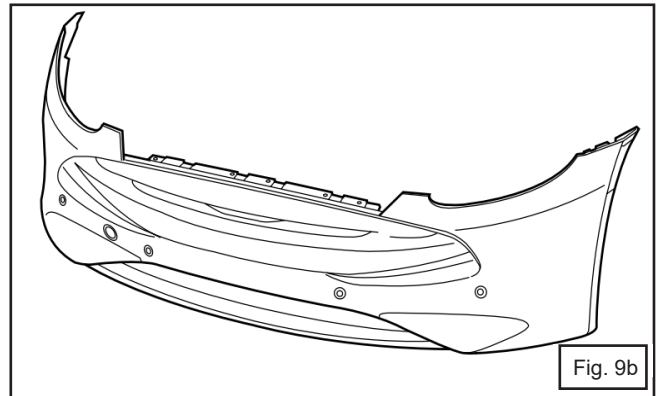


Fig. 9b

Headlamp Assembly Removal

Note: When replacing the Control Module Assembly, the front fascia attaching clip bracket will have to be removed to access the old module and reinstalled after the new module is replaced. There are (4) T15 attaching bolts for each headlamp.

14. Disconnect the Headlamp electrical harness connector from each lamp, use a tool to disengage the clip and firmly pull down (Fig. 9c and Fig. 9d).

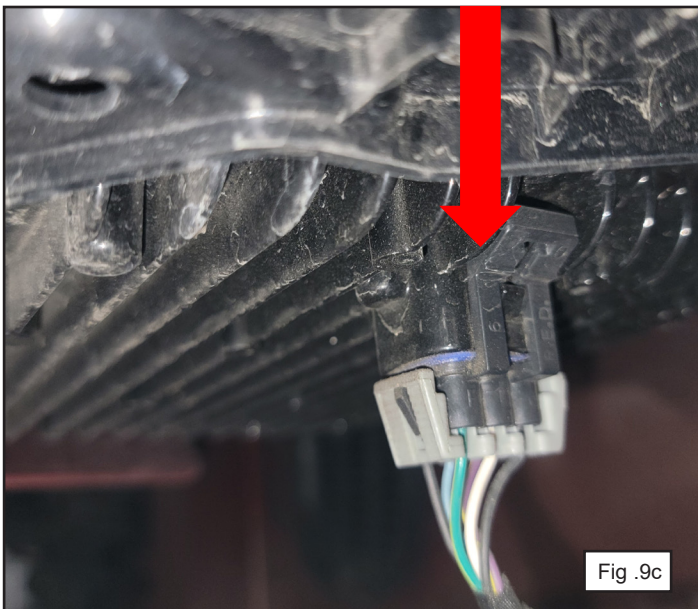


Fig .9c



Fig. 9d

Karma Automotive Bulletins and service documents are intended for use by experienced and trained Technicians. If you lack the skills, tools, equipment and a suitable workshop for any procedure described in this document, we suggest you leave such repairs to an Authorized Karma Service Provider or qualified service center. See your service provider for advice on whether your vehicle may benefit from the information contained within this document. The information contained in the Karma Bulletin is accurate at the date of publication. However, Karma Automotive regularly updates technical information. Please check with your Karma Automotive Service Provider that the bulletin you intend to use contains the latest available information.

MODEL: Revero GT and GTS, and GS-6

Type: Safety Recall Campaign

Date: July 2024

System: Electrical

TITLE: Headlamp Control Unit Replacement Safety Recall Campaign

15. Remove the 10mm bolt securing the headlamp (install torque is 4Nm).

To gain direct access to the headlamp 10mm side attaching bolt, use an extension through the front gap (Fig. 10a and Fig 10b).



Karma Automotive Bulletins and service documents are intended for use by experienced and trained Technicians. If you lack the skills, tools, equipment and a suitable workshop for any procedure described in this document, we suggest you leave such repairs to an Authorized Karma Service Provider or qualified service center. See your service provider for advice on whether your vehicle may benefit from the information contained within this document. The information contained in the Karma Bulletin is accurate at the date of publication. However, Karma Automotive regularly updates technical information. Please check with your Karma Automotive Service Provider that the bulletin you intend to use contains the latest available information.

MODEL: Revero GT and GTS, and GS-6

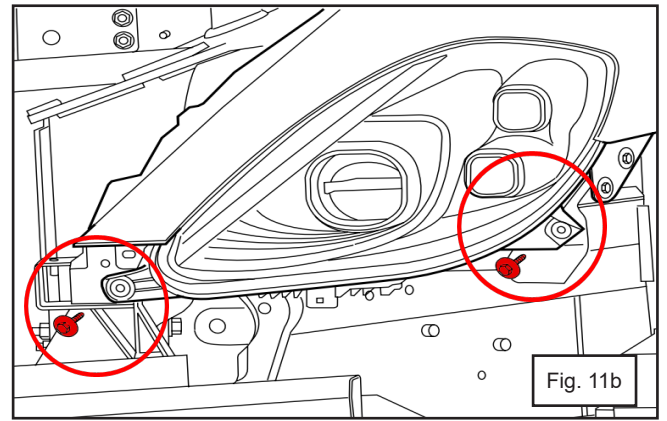
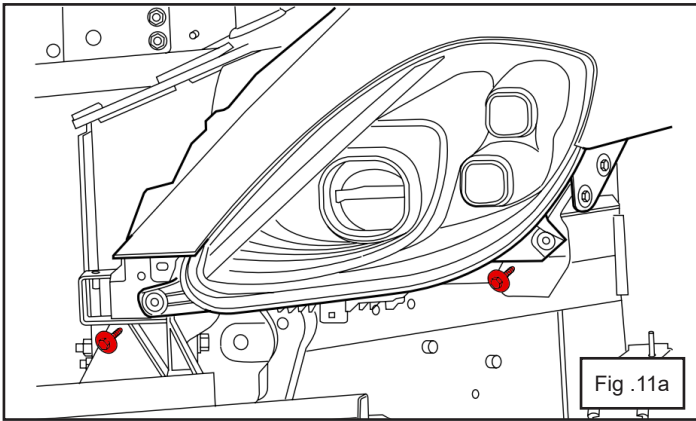
Type: Safety Recall Campaign

Date: July 2024

System: Electrical

TITLE: Headlamp Control Unit Replacement Safety Recall Campaign

16. Remove (x2) bolts securing front of headlamp assembly from body
Install Torque – 4 Nm. (Fig.11a, Fig.11b, Fig.11c, and Fig.11d).



Karma Automotive Bulletins and service documents are intended for use by experienced and trained Technicians. If you lack the skills, tools, equipment and a suitable workshop for any procedure described in this document, we suggest you leave such repairs to an Authorized Karma Service Provider or qualified service center. See your service provider for advice on whether your vehicle may benefit from the information contained within this document. The information contained in the Karma Bulletin is accurate at the date of publication. However, Karma Automotive regularly updates technical information. Please check with your Karma Automotive Service Provider that the bulletin you intend to use contains the latest available information.

MODEL: Revero GT and GTS, and GS-6

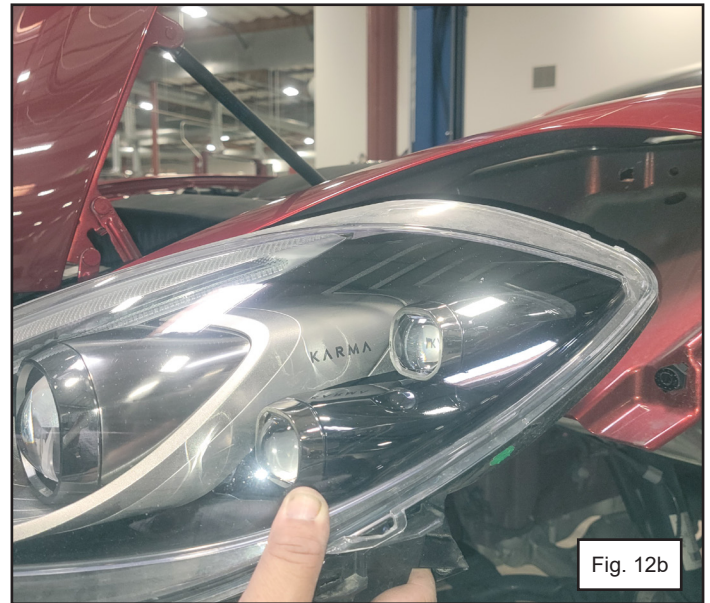
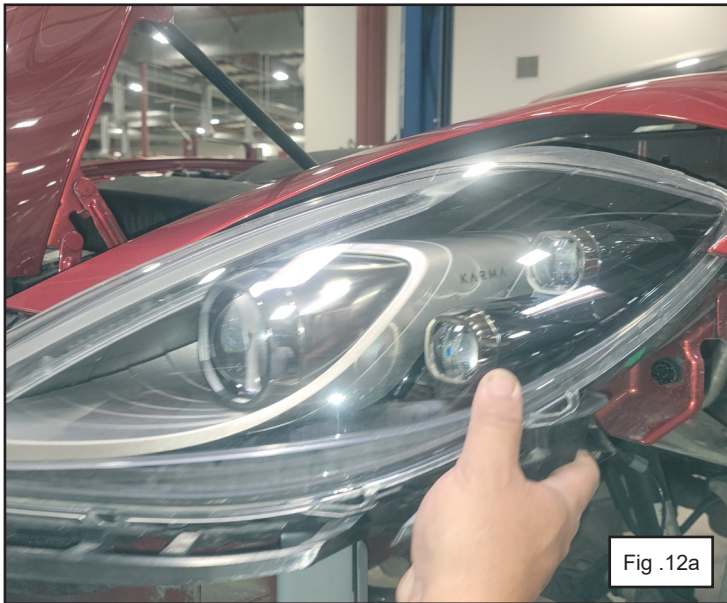
Type: Safety Recall Campaign

Date: July 2024

System: Electrical

TITLE: Headlamp Control Unit Replacement Safety Recall Campaign

17. With all the fasteners removed, pull the headlamp forward to remove (Fig.12a, and Fig.12b). Set this aside. An image of the headlamps prior to removal and an image of part number on the affected headlamps, should be provided to TSS (Fig.13). The part number is located on the label on the underside of the headlamp. The parts may be requested to be sent back to Karma Automotive, verify instructions with your TSS representative.



Left hand lamp shown as example.

Karma Automotive Bulletins and service documents are intended for use by experienced and trained Technicians. If you lack the skills, tools, equipment and a suitable workshop for any procedure described in this document, we suggest you leave such repairs to an Authorized Karma Service Provider or qualified service center. See your service provider for advice on whether your vehicle may benefit from the information contained within this document. The information contained in the Karma Bulletin is accurate at the date of publication. However, Karma Automotive regularly updates technical information. Please check with your Karma Automotive Service Provider that the bulletin you intend to use contains the latest available information.

MODEL: Revero GT and GTS, and GS-6

Type: Safety Recall Campaign

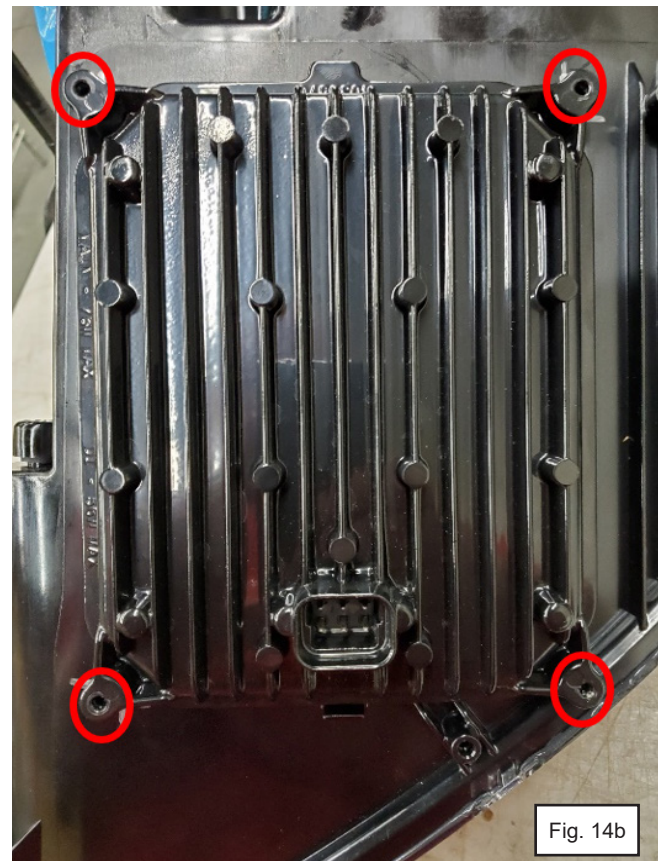
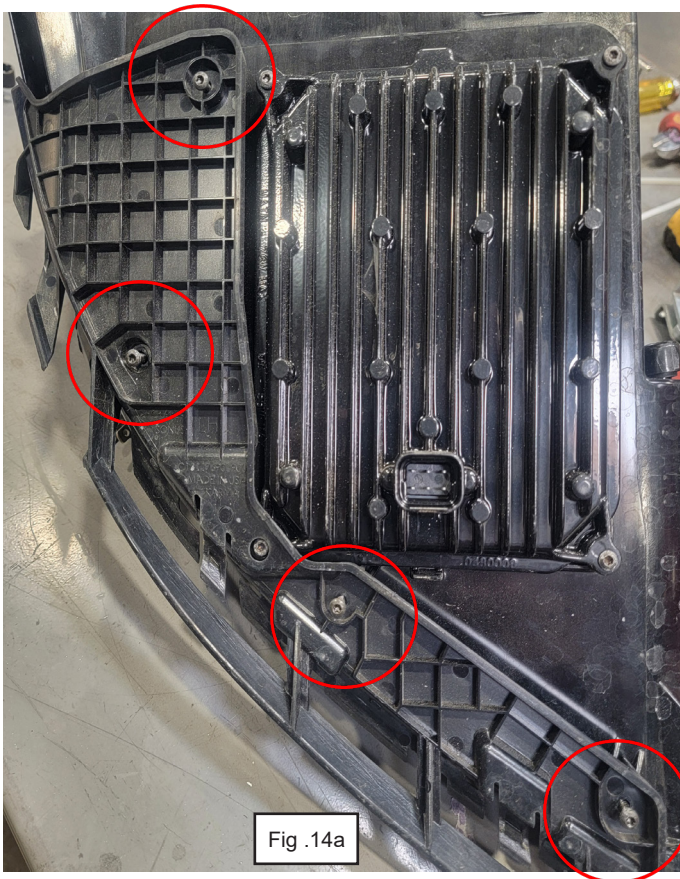
Date: July 2024

System: Electrical

TITLE: Headlamp Control Unit Replacement Safety Recall Campaign

18. Place the headlamp on a cloth covered bench on the anti-static mat, in order to remove the front bracket and remove the headlamp control module, this procedure is the same on both RH and LH units (Fig.14a and Fig. 14b). This bracket is the Front Fascia attaching clip bracket and (4) T15 screws. The fasteners have a hard stop on install (14 in-lbs. install torque). once remove proceed to undo the four (4) fasteners on the headlamp control module.

Failure to protect the headlamp during this procedure, resulting in damage to the headlamp, such as scratched lens or broken tabs of the headlamp, or other damage, is not a warrantable concern.



19. Carefully loosen the driver assembly from the housing. Using a flathead screwdriver at the screw locations to pry the assembly gently is permissible as the gasket seal with the housing may provide some resistance. Ensure there is not excessive travel of the driver module assemble if prying with a tool

Karma Automotive Bulletins and service documents are intended for use by experienced and trained Technicians. If you lack the skills, tools, equipment and a suitable workshop for any procedure described in this document, we suggest you leave such repairs to an Authorized Karma Service Provider or qualified service center. See your service provider for advice on whether your vehicle may benefit from the information contained within this document. The information contained in the Karma Bulletin is accurate at the date of publication. However, Karma Automotive regularly updates technical information. Please check with your Karma Automotive Service Provider that the bulletin you intend to use contains the latest available information.

MODEL: Revero GT and GTS, and GS-6

Type: Safety Recall Campaign

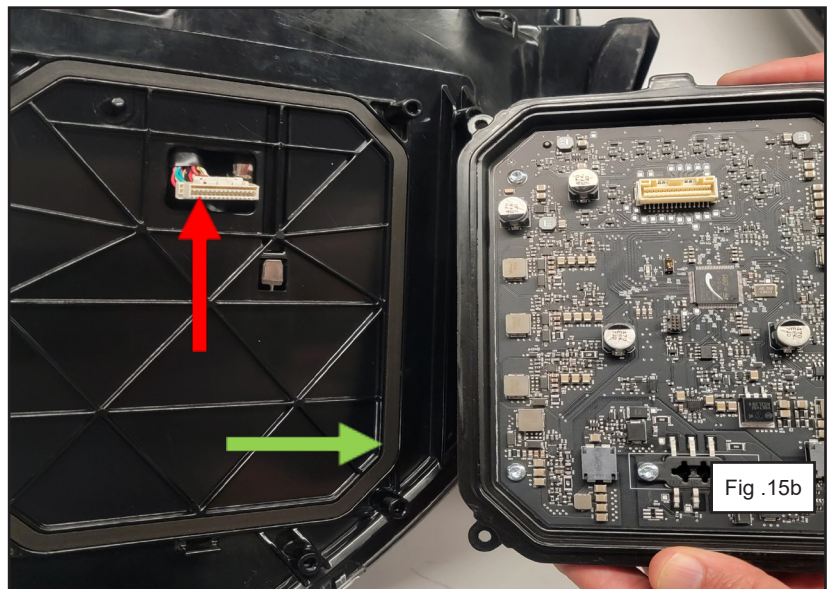
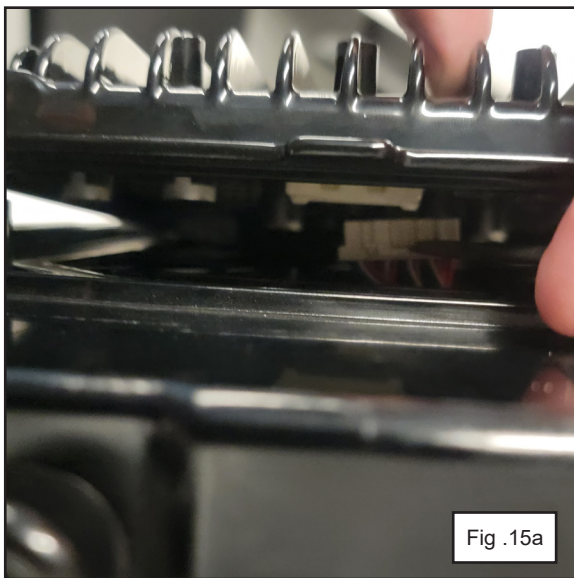
Date: July 2024

System: Electrical

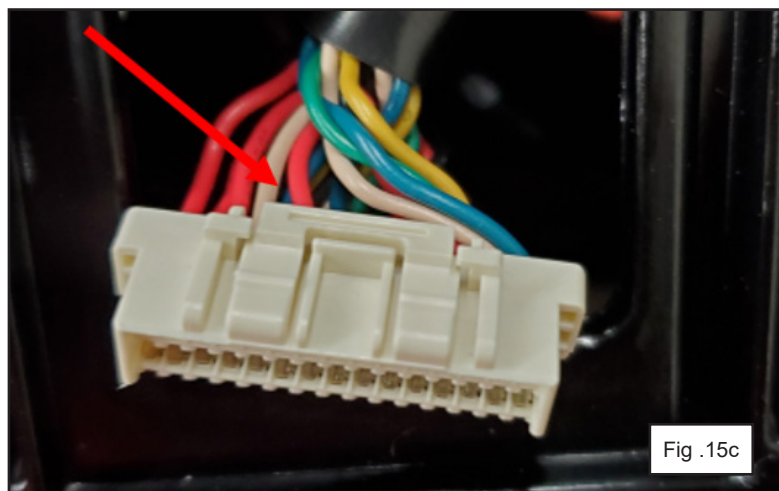
TITLE: Headlamp Control Unit Replacement Safety Recall Campaign

20. The headlamp module will still be connected to the lamp via a very short harness length. This is a latching connection located on the opposite side of the driver from the integral connector. Using a small flathead screwdriver – push connector latch in and gently remove the driver from the lamp. there is a limited amount of room to open driver prior to removal to expose latch (Fig.15a).

Excessive pull force should not be applied to this connection and could lead to lamp damage, this is not a warranty issue if the technician damages the harness. With the connector is unlatched (red arrow) remove the control module and the gasket (green arrow), shown (Fig.15b).



The latch on the connector is shown below in Fig.15c



Karma Automotive Bulletins and service documents are intended for use by experienced and trained Technicians. If you lack the skills, tools, equipment and a suitable workshop for any procedure described in this document, we suggest you leave such repairs to an Authorized Karma Service Provider or qualified service center. See your service provider for advice on whether your vehicle may benefit from the information contained within this document. The information contained in the Karma Bulletin is accurate at the date of publication. However, Karma Automotive regularly updates technical information. Please check with your Karma Automotive Service Provider that the bulletin you intend to use contains the latest available information.

MODEL: Revero GT and GTS, and GS-6

Type: Safety Recall Campaign

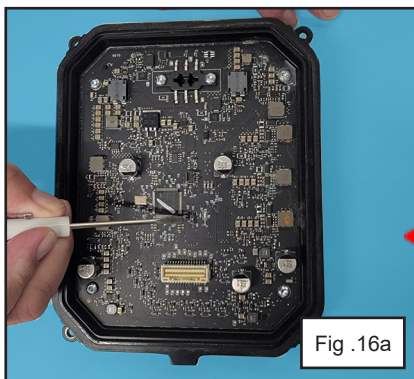
Date: July 2024

System: Electrical

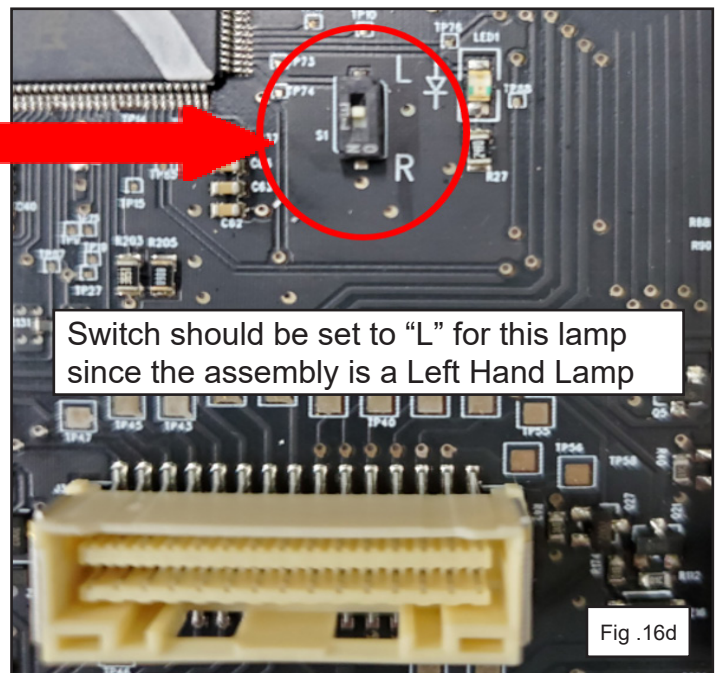
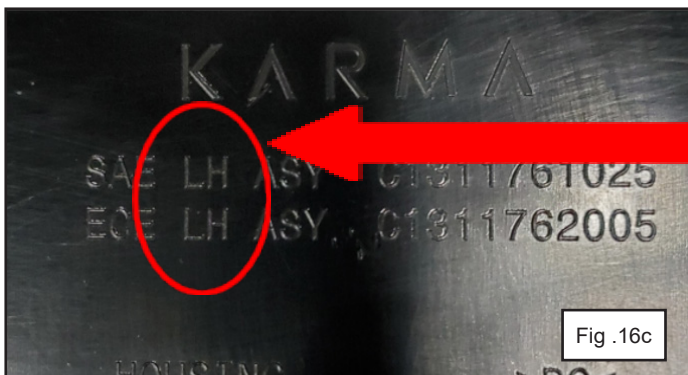
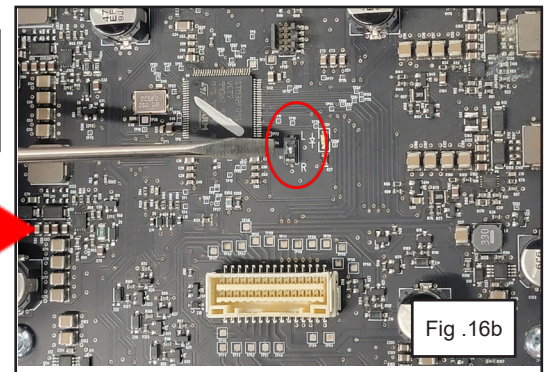
TITLE: Headlamp Control Unit Replacement Safety Recall Campaign

21. Upon removal of control module assembly from headlamp – remove new replacement control module from provided electro-static discharge sensitive bag. Verify lamp side, the replacement control module is being installed and the DIP switch on the driver circuit board are in alignment. (LH lamp and switch moved to Left of “L” setting. This is a very small white switch (Fig.16a), it may be covered in tape, remove to access the switch and verify the switch to be in the correct position using a non-magnetized tool, or wood toothpick (Fig. 16b). **Again a left hand lamp should have the DIP switch set to L, a right side lamp should have DIP switch set to R.**

IMPORTANT: Before installation verify switch position to the appropriate letter to match lamp being repaired – this ensures appropriate directional indicator control. (L for LH lamp and R for the RH Lamp) If it is not set, move the switch into the corresponding lamp position.



All work is to be performed on the anti-static mats provided.



Switch should be set to “L” for this lamp since the assembly is a Left Hand Lamp

22. Again verify and match the lamp side (fig. 16c), to the switch found on the control module. The module here (fig. 16d) is showing the switch on the RH position and should be adjusted to match with the LH lamp.

Karma Automotive Bulletins and service documents are intended for use by experienced and trained Technicians. If you lack the skills, tools, equipment and a suitable workshop for any procedure described in this document, we suggest you leave such repairs to an Authorized Karma Service Provider or qualified service center. See your service provider for advice on whether your vehicle may benefit from the information contained within this document. The information contained in the Karma Bulletin is accurate at the date of publication. However, Karma Automotive regularly updates technical information. Please check with your Karma Automotive Service Provider that the bulletin you intend to use contains the latest available information.

MODEL: Revero GT and GTS, and GS-6

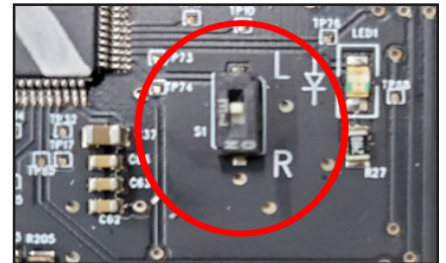
Type: Safety Recall Campaign

Date: July 2024

System: Electrical

TITLE: Headlamp Control Unit Replacement Safety Recall Campaign

If the control module position switch is in the incorrect position for the lamp side it is installed on the respective turn Indicator will not respond on request from the driver. Please note again, the Left-Hand headlamp module will be set to "L". The Right-Hand headlamp module will be set to "R", for proper function.



23. Place a new gasket into the gasket channel (shown in red, fig. 17a) on the headlamp housing side to ensure a correct sealing of the assembly with the new module installed (fig.17b).

The gasket is not a red material, it is black or dark gray in color, the red color is used for illustration purposes only.



Fig .17a



Fig .17b

Karma Automotive Bulletins and service documents are intended for use by experienced and trained Technicians. If you lack the skills, tools, equipment and a suitable workshop for any procedure described in this document, we suggest you leave such repairs to an Authorized Karma Service Provider or qualified service center. See your service provider for advice on whether your vehicle may benefit from the information contained within this document. The information contained in the Karma Bulletin is accurate at the date of publication. However, Karma Automotive regularly updates technical information. Please check with your Karma Automotive Service Provider that the bulletin you intend to use contains the latest available information.

MODEL: Revero GT and GTS, and GS-6

Type: Safety Recall Campaign

Date: July 2024

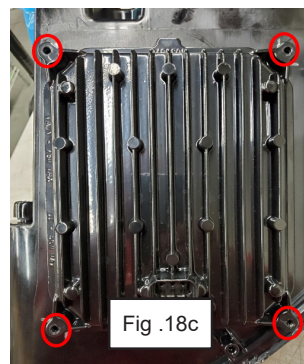
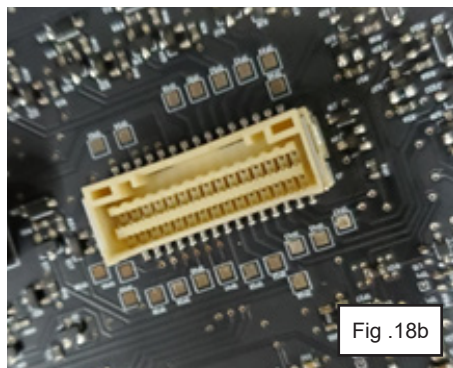
System: Electrical

TITLE: Headlamp Control Unit Replacement Safety Recall Campaign

24. Utilizing your flathead screwdriver, or suitable tool – carefully secure the lamp connector and prop it into an upright position using gentle leverage of the assembly as shown below with the screwdriver on the backside of the connector (fig. 18a).



25. Proceed to install the new control module aligning the connector header from the driver board and the lamp connector. There will be an audible click when properly inserted and both detents will be engaged. Again, only gentle force is necessary as the connector is not a friction fit style connector but locks with the latch (fig.18b).



26. Once the driver is installed and the gasket is properly seated, the 4 torx fasteners can be reinstalled, as shown by red circled areas above (fig 18c), assembly torque of 14 in-lbs (fig 18c). The headlamp to fascia bracket must be reinstalled as well before mounting to the vehicle (use the 4, T15 fasteners as before in step 18.)

Karma Automotive Bulletins and service documents are intended for use by experienced and trained Technicians. If you lack the skills, tools, equipment and a suitable workshop for any procedure described in this document, we suggest you leave such repairs to an Authorized Karma Service Provider or qualified service center. See your service provider for advice on whether your vehicle may benefit from the information contained within this document. The information contained in the Karma Bulletin is accurate at the date of publication. However, Karma Automotive regularly updates technical information. Please check with your Karma Automotive Service Provider that the bulletin you intend to use contains the latest available information.

MODEL: Revero GT and GTS, and GS-6

Type: Safety Recall Campaign

Date: July 2024

System: Electrical

TITLE: Headlamp Control Unit Replacement Safety Recall Campaign

27. Plug the lamp into the vehicle connector and ensure proper function of all lamp functions and no faults are present.

27.1 – Verify function of Daytime Running Lights

27.2 – Verify Low Beam and Parking Lamp Function (Dim DRL function)

27.3 – Verify High Beam function

27.4 – Verify Turn Signal Indicator

If Turn signal is not functional – this signifies the switch, in fig. 6b, is not in the correct position. Repeat instructions above (Step 21) and verify function.

27.5 Verify Hazard Function

28. Reinstall Lamp to vehicle following confirmation of lamp function and that no damage to the lamp occurred upon rework.

Re-assemble the vehicle in the opposite order of disassembly and removal (Fig.19).

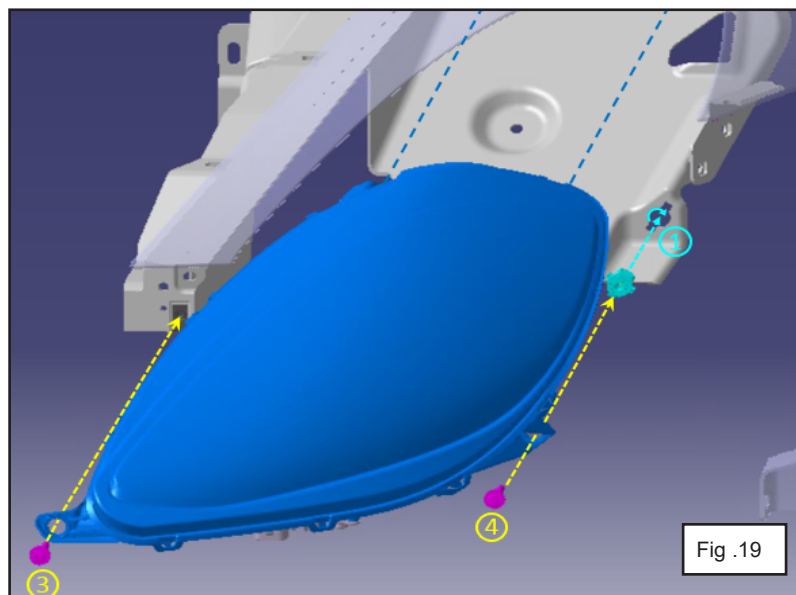


Fig .19

Karma Automotive Bulletins and service documents are intended for use by experienced and trained Technicians. If you lack the skills, tools, equipment and a suitable workshop for any procedure described in this document, we suggest you leave such repairs to an Authorized Karma Service Provider or qualified service center. See your service provider for advice on whether your vehicle may benefit from the information contained within this document. The information contained in the Karma Bulletin is accurate at the date of publication. However, Karma Automotive regularly updates technical information. Please check with your Karma Automotive Service Provider that the bulletin you intend to use contains the latest available information.

MODEL: Revero GT and GTS, and GS-6

Type: Safety Recall Campaign

Date: July 2024

System: Electrical

TITLE: Headlamp Control Unit Replacement Safety Recall Campaign

30. When reinstalling the fascia, begin from one side at the headlamp and press into the brackets. Ensure the fascia tabs align with the headlamp brackets properly (Fig.20a, Fig.20b, Fig.20c, Fig.20d and Fig. 20e).



Fig .20a

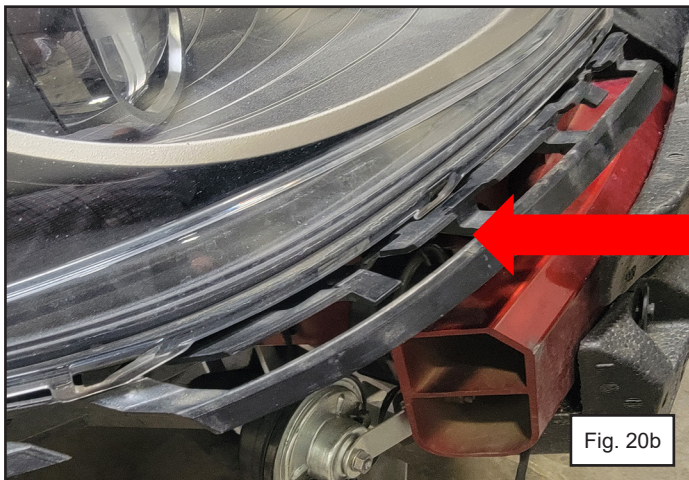


Fig. 20b



Fig .20c



Fig. 20d

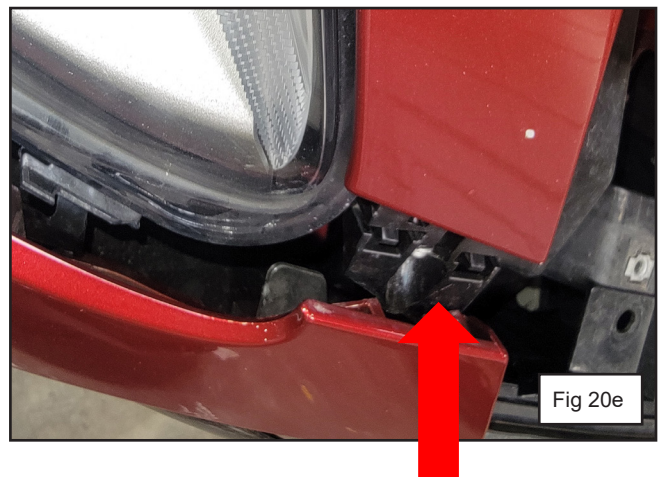


Fig 20e

Karma Automotive Bulletins and service documents are intended for use by experienced and trained Technicians. If you lack the skills, tools, equipment and a suitable workshop for any procedure described in this document, we suggest you leave such repairs to an Authorized Karma Service Provider or qualified service center. See your service provider for advice on whether your vehicle may benefit from the information contained within this document. The information contained in the Karma Bulletin is accurate at the date of publication. However, Karma Automotive regularly updates technical information. Please check with your Karma Automotive Service Provider that the bulletin you intend to use contains the latest available information.

MODEL: Revero GT and GTS, and GS-6

Type: Safety Recall Campaign

Date: July 2024

System: Electrical

TITLE: Headlamp Control Unit Replacement Safety Recall Campaign

Headlamp Alignment Inspection Preparation

31. Ensure the inspection working area is level

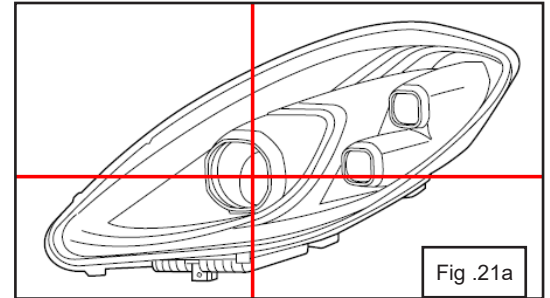
A Full tank of fuel is a prerequisite for the inspection. A gallon of gas is roughly 6 Lb.. If the tank is not full, Add 6 Lb. (2.7 kg) of weight in the trunk for each gallon missing. The tank capacity is 10 gallons.

The inspection expects there is a 200 Lb. (75 kg) person, or weight in the driver's seat.

Tire Pressures should be set to spec.

Jounce the front of the vehicle to level the suspension.

32. Locate the optical center of both headlamps (Fig. 21a) (and see below).



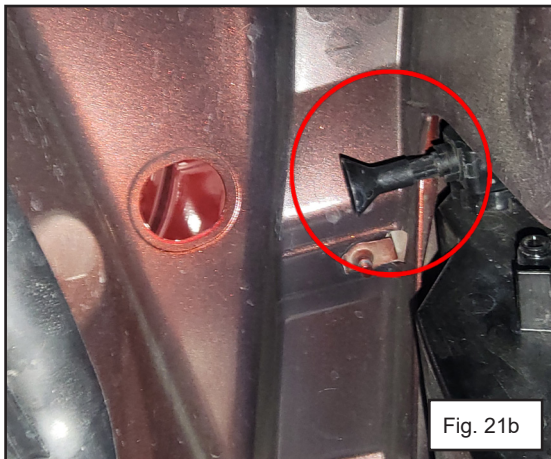
The optical centers should be 26 inches (.66 M) from the ground.

Position the headlamp inspection screen (or mark a wall with the provided measurement) in front of the vehicle at the proper distance, measured from the optical center of the headlamps.

Note, the distance is different between North American and Europe specifications.

Ensure the headlamp lenses are clean and at room temp.

Begin the inspection with the headlamps OFF, so they do not heat up. Measurement will be on the normal low beam setting.



Headlamp adjuster view from under the vehicle (Fig.21b).

Karma Automotive Bulletins and service documents are intended for use by experienced and trained Technicians. If you lack the skills, tools, equipment and a suitable workshop for any procedure described in this document, we suggest you leave such repairs to an Authorized Karma Service Provider or qualified service center. See your service provider for advice on whether your vehicle may benefit from the information contained within this document. The information contained in the Karma Bulletin is accurate at the date of publication. However, Karma Automotive regularly updates technical information. Please check with your Karma Automotive Service Provider that the bulletin you intend to use contains the latest available information.

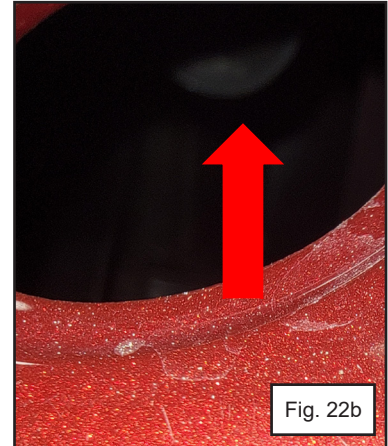
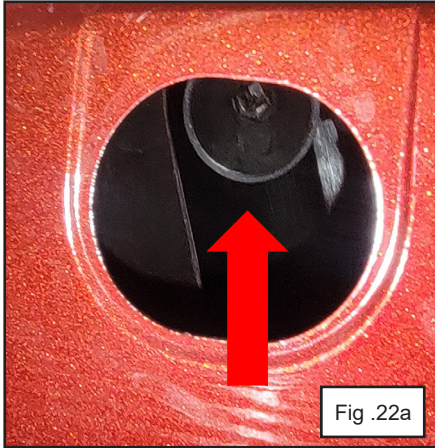
MODEL: Revero GT and GTS, and GS-6

Type: Safety Recall Campaign

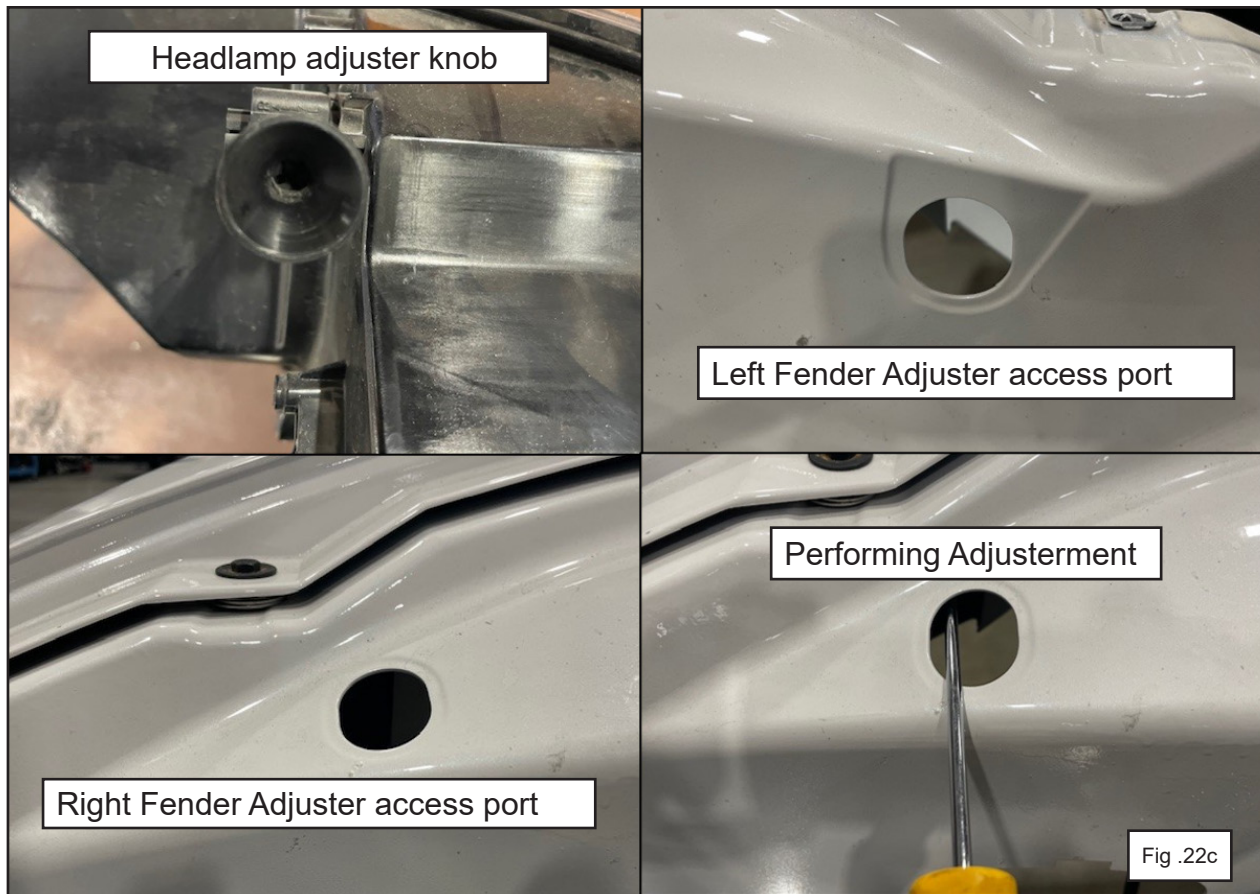
Date: July 2024

System: Electrical

TITLE: Headlamp Control Unit Replacement Safety Recall Campaign



33. The adjusters may be difficult to see (Fig.22a and Fig.22b) both can be felt through the access holes, and adjusted as required (see below Fig. 22c). use a philips style screw driver.



Karma Automotive Bulletins and service documents are intended for use by experienced and trained Technicians. If you lack the skills, tools, equipment and a suitable workshop for any procedure described in this document, we suggest you leave such repairs to an Authorized Karma Service Provider or qualified service center. See your service provider for advice on whether your vehicle may benefit from the information contained within this document. The information contained in the Karma Bulletin is accurate at the date of publication. However, Karma Automotive regularly updates technical information. Please check with your Karma Automotive Service Provider that the bulletin you intend to use contains the latest available information.

MODEL: Revero GT and GTS, and GS-6

Type: Safety Recall Campaign

Date: July 2024

System: Electrical

TITLE: Headlamp Control Unit Replacement Safety Recall Campaign

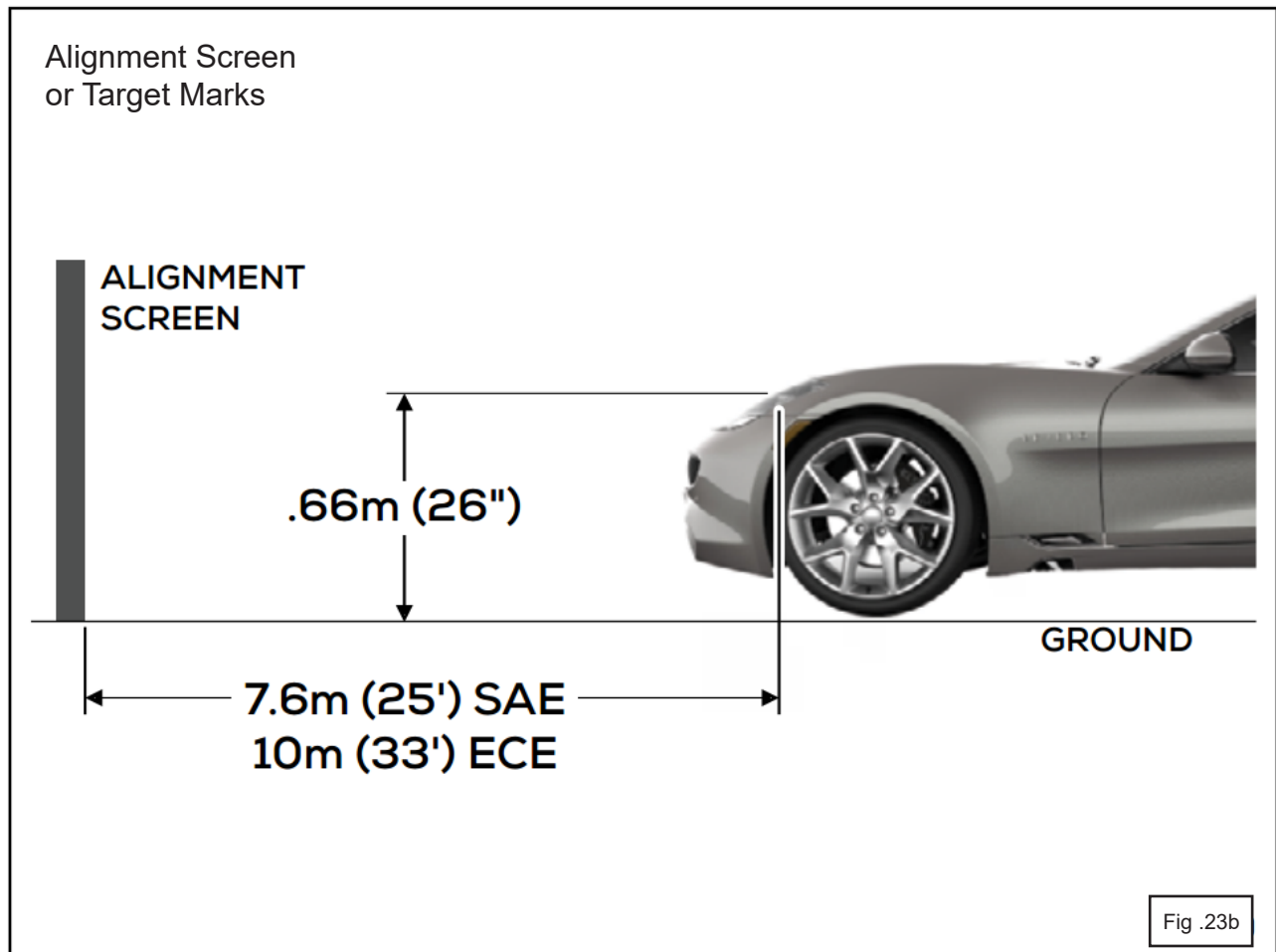
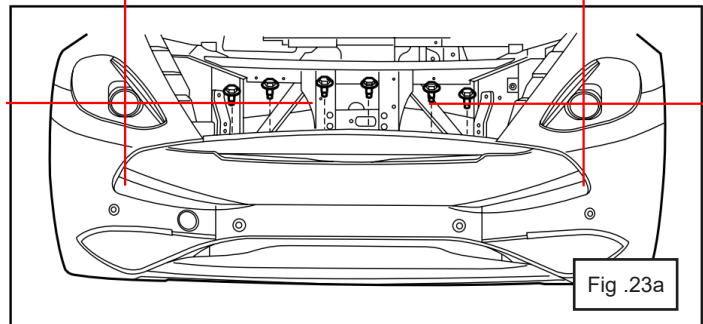
34. Position the headlamp alignment inspection target marks to the proper distance from the optical center of the headlamps (Fig.23b).

Distance:

25 Ft. (7.6 M) North America

33 Ft. (10 M) EU

Measure from the optical center of the headlamp (Fig. 23a) to the floor, 26 inches (0.66 M).



Karma Automotive Bulletins and service documents are intended for use by experienced and trained Technicians. If you lack the skills, tools, equipment and a suitable workshop for any procedure described in this document, we suggest you leave such repairs to an Authorized Karma Service Provider or qualified service center. See your service provider for advice on whether your vehicle may benefit from the information contained within this document. The information contained in the Karma Bulletin is accurate at the date of publication. However, Karma Automotive regularly updates technical information. Please check with your Karma Automotive Service Provider that the bulletin you intend to use contains the latest available information.

MODEL: Revero GT and GTS, and GS-6

Type: Safety Recall Campaign

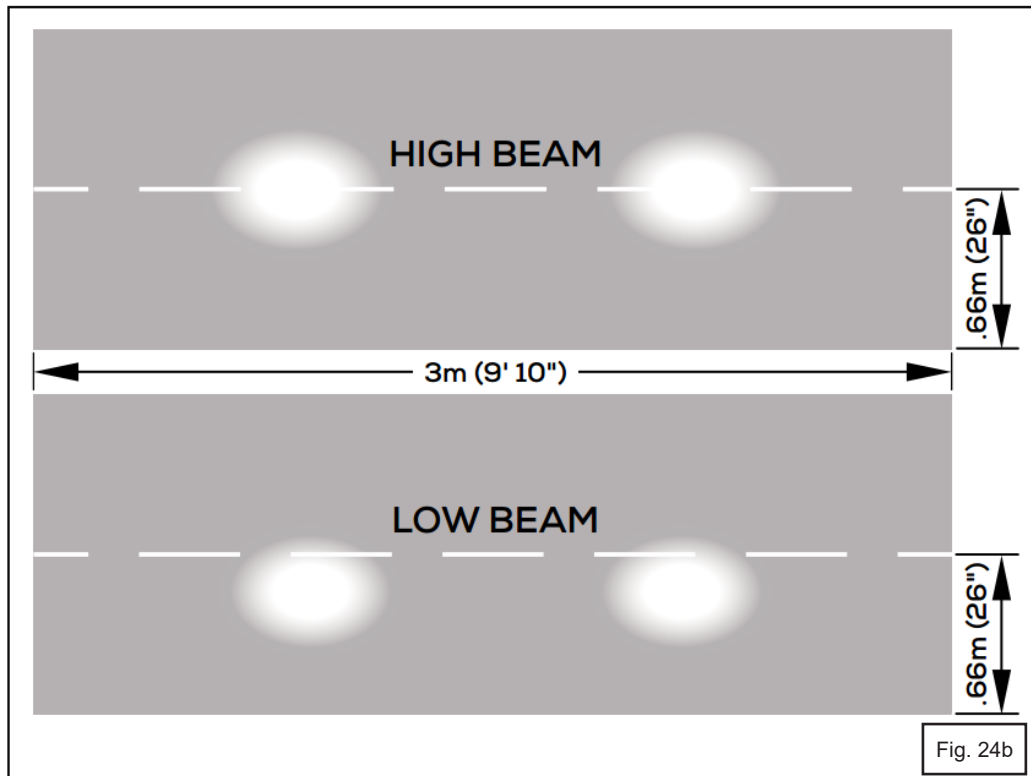
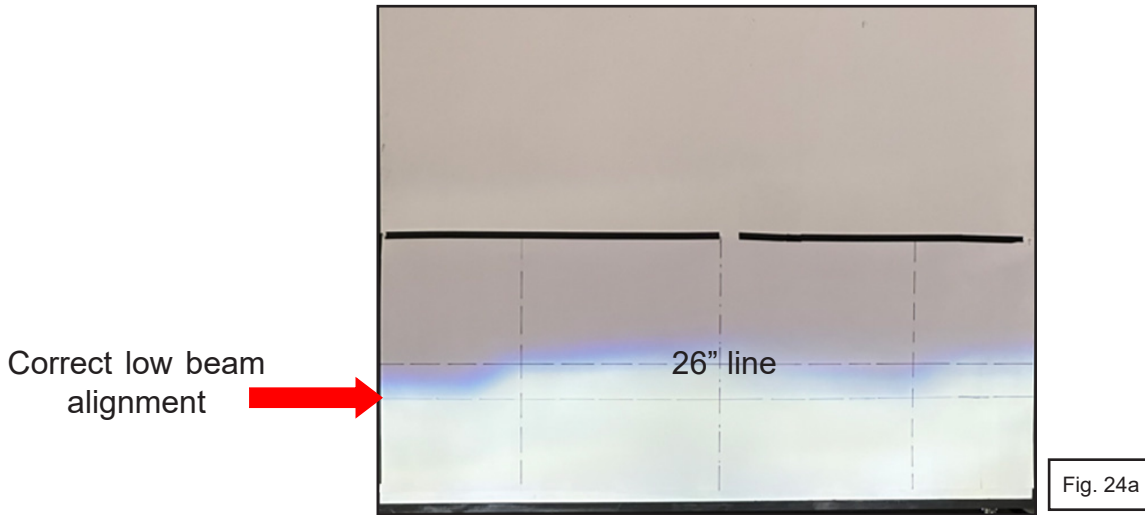
Date: July 2024

System: Electrical

TITLE: Headlamp Control Unit Replacement Safety Recall Campaign

35. The low beam adjustment is shown on a target wall, below the 26" or (.66m) line (Fig. 24a). High beam alignment will follow as adjustment is completed on the low beam.

Adjust the aiming line on the alignment marks to the 26 inch (0.66 M) height (Fig. 24b). Turn on the headlamps, and inspect the current alignment adjust as required.



Karma Automotive Bulletins and service documents are intended for use by experienced and trained Technicians. If you lack the skills, tools, equipment and a suitable workshop for any procedure described in this document, we suggest you leave such repairs to an Authorized Karma Service Provider or qualified service center. See your service provider for advice on whether your vehicle may benefit from the information contained within this document. The information contained in the Karma Bulletin is accurate at the date of publication. However, Karma Automotive regularly updates technical information. Please check with your Karma Automotive Service Provider that the bulletin you intend to use contains the latest available information.

MODEL: Revero GT and GTS, and GS-6

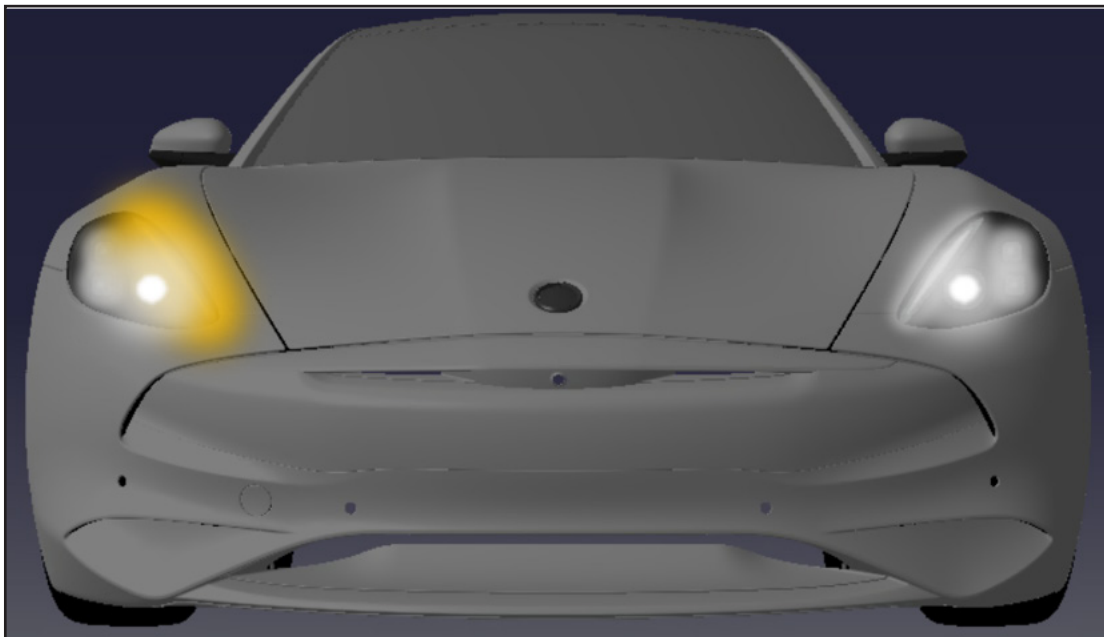
Type: Safety Recall Campaign

Date: July 2024

System: Electrical

TITLE: Headlamp Control Unit Replacement Safety Recall Campaign

36. To ensure the quality of repair, again verify function of turn signal indicators prior to leaving the shop. Continue to test drive the vehicle on surface streets. Verification will require to several right and left hand turns and activation of the turn indicator as required. Note the proper function and behavior of the indicator flashers (turn signals).



Karma Automotive Bulletins and service documents are intended for use by experienced and trained Technicians. If you lack the skills, tools, equipment and a suitable workshop for any procedure described in this document, we suggest you leave such repairs to an Authorized Karma Service Provider or qualified service center. See your service provider for advice on whether your vehicle may benefit from the information contained within this document. The information contained in the Karma Bulletin is accurate at the date of publication. However, Karma Automotive regularly updates technical information. Please check with your Karma Automotive Service Provider that the bulletin you intend to use contains the latest available information.

MODEL: Revero GT and GTS, and GS-6

Type: Safety Recall Campaign

Date: July 2024

System: Electrical

TITLE: Headlamp Control Unit Replacement Safety Recall Campaign

36. Fill out and adhere the recall campaign completion label, C149950001101, (Fig. 25) to the passenger side shock tower, as shown (Fig.26). This will serve as a clear indication that the recall has been performed and is **REQUIRED** to ensure compliance with the **Headlamp Control Unit Replacement Safety Recall Campaign. Use 1 label per vehicle**

⚠ NOTICE!

Clean the shock tower area, thoroughly, to promote proper campaign completion label adhesion.

KARMA AUTOMOTIVE INC.

Campaign No.: _____

Description: _____

Retailer Code: _____

Repair Date: ____ / ____ / ____

For questions, please contact
Client Services at 1-855-565-2762

C149950001101

Fig.25

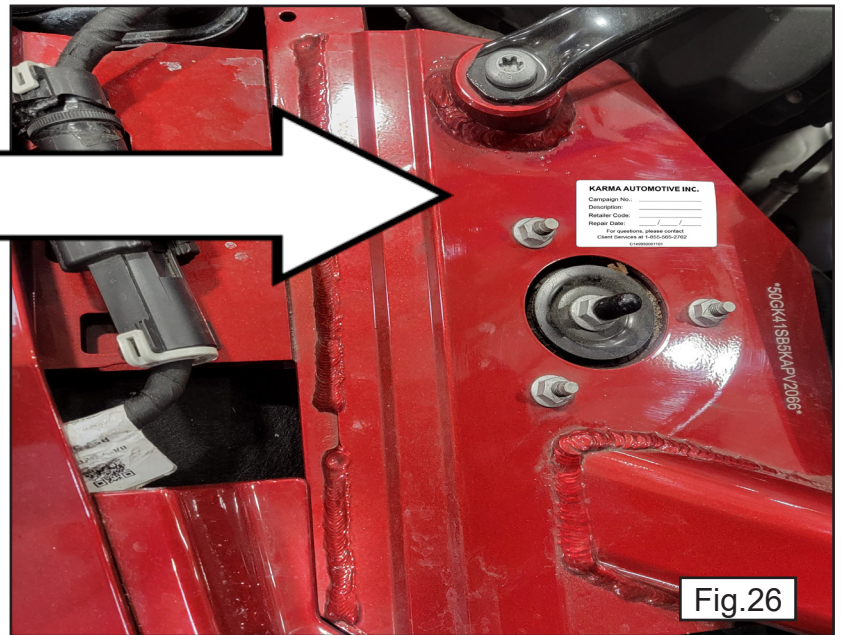


Fig.26

⚠ NOTICE!

All original headlamp control modules **MUST** be destroyed by drilling the printed circuit board, and images provided to the Karma TSS case.



MODEL: Revero GT and GTS, and GS-6

Type: Safety Recall Campaign

Date: July 2024

System: Electrical

TITLE: Headlamp Control Unit Replacement Safety Recall Campaign

SHOP SUPPLIES:

DESCRIPTION
As indicated in bulletin

SPECIAL TOOLS and PARTS:

PART NUMBER	DESCRIPTION	QTY
C161176000300	Service Kit - Headlamp Module Karma Assembly	1

LABOR CODES:

CODE	DESCRIPTION	TIME	DEFECT CODE
90-80-04-10	Recall Headlamp Replacement	2.3	90-80-04-10

CAUSAL PART:

PART NUMBER	DESCRIPTION
C131176102503	Headlamp Assembly - LH

Karma Automotive Bulletins and service documents are intended for use by experienced and trained Technicians. If you lack the skills, tools, equipment and a suitable workshop for any procedure described in this document, we suggest you leave such repairs to an Authorized Karma Service Provider or qualified service center. See your service provider for advice on whether your vehicle may benefit from the information contained within this document. The information contained in the Karma Bulletin is accurate at the date of publication. However, Karma Automotive regularly updates technical information. Please check with your Karma Automotive Service Provider that the bulletin you intend to use contains the latest available information.