

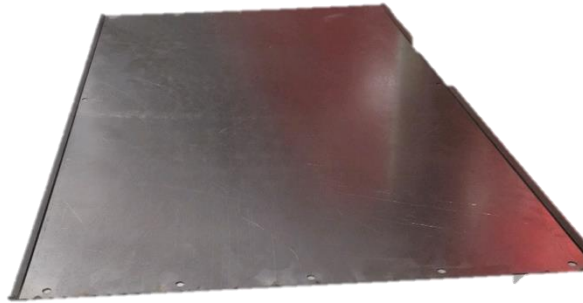
Generator Heat Shield Installation

It has come to our attention that in certain model year **2023-2024** Atlas touring coaches, there are units that do not have the heat shield installed above the generator. This can expose the subflooring to excessive heat, which could result in a fire, increasing the risk of personal injury and/or property damage. The remedy is to install a heat shield to the underside of the subfloor, above the generator, per the instructions provided.

Parts Needed:



Self-drilling screws (14)



Heat shield

Tools Needed:



1/4" impact driver



3/8" magnetic nut



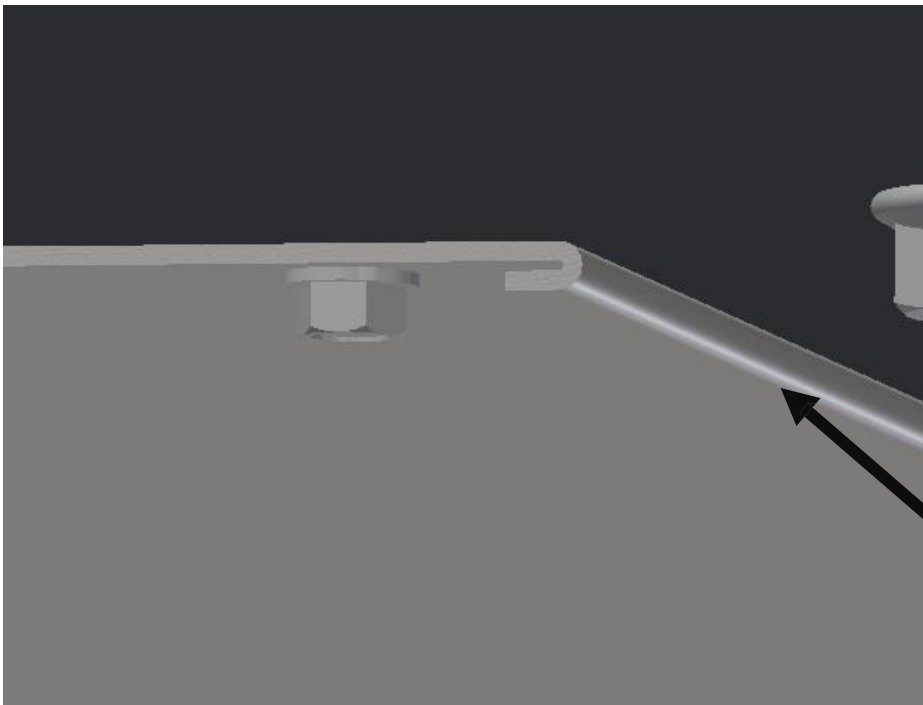
Extension for impact driver (18" minimum)

1. Open the generator compartment door. Prop the door open with a stick or broom handle. The door prop on the door can't be used during this process as it will be in the way of installing the heat shield.



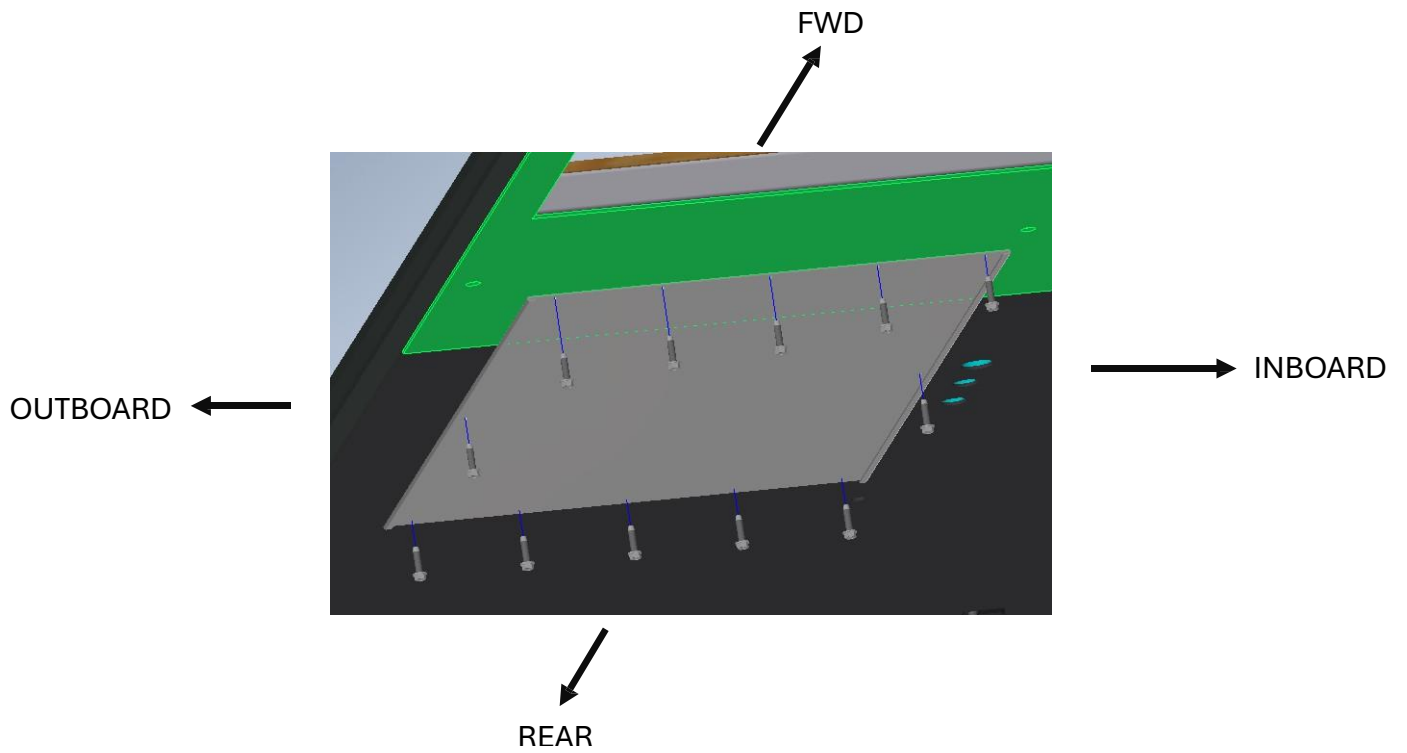
Temporary door prop

2. Slide the heat shield between the generator & floor with the hemmed edges down. The heat shield should be centered over the generator; forward, aft, and side to side.



Hemmed edge
towards ground

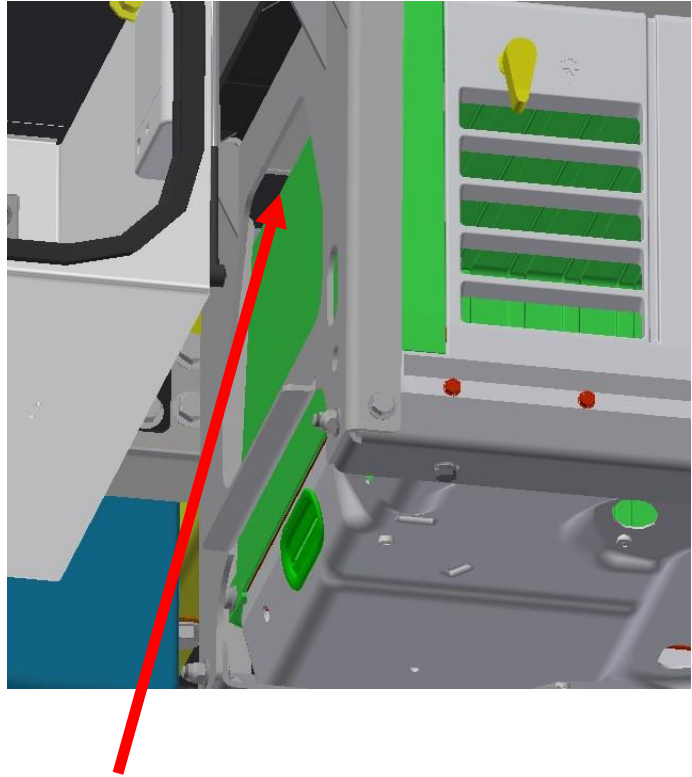
Screw locations



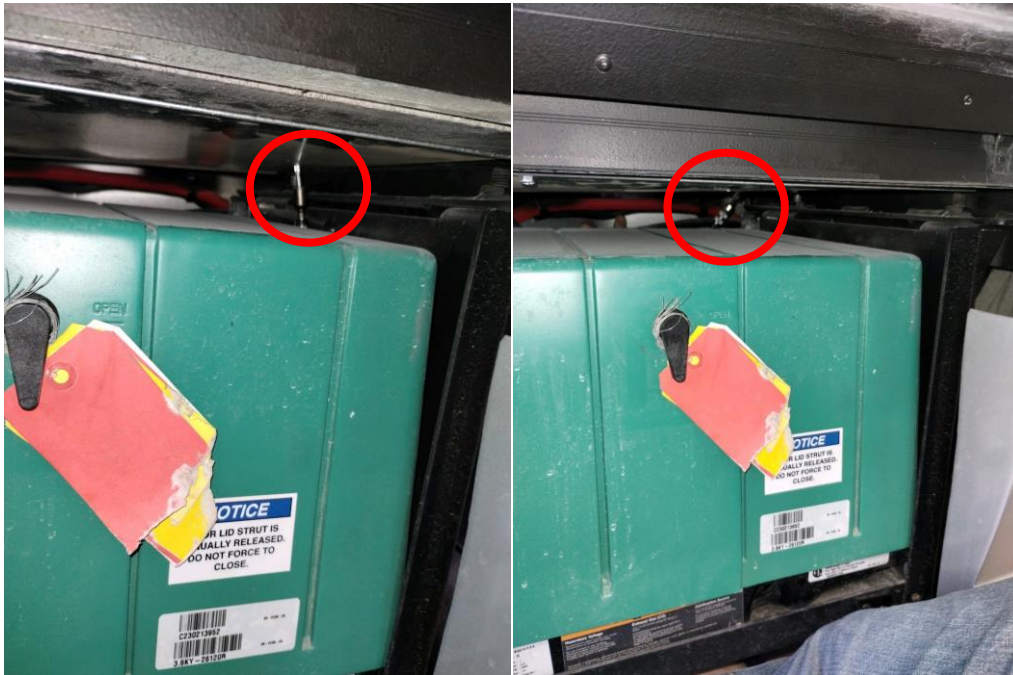
3. Install screws in the holes in the middle first, then outboard and finally inboard.



4. To install the front and rear screws, slide the extension with a magnetic socket, through the open ends of the generator bracket. The screws must go through the predrilled holes in the heat shield.



Repeat Steps for Front End of Heat Shield



Installation Tips

Use a piece of metal or cardboard to protect the generator cover from being scratched from the impact driver.



Temporarily place a block of foam or wood to help keep the heat shield flat. Remove once the heat shield is completely installed.

