

RECALL 24V202 / 2024-172 REMEDY INSTRUCTIONS



Make(s): ISATA
Model(s): MANY, SEE BELOW
Model Year(s): 2023 - 2025

Concern:
The nut on the backside of the Main 12V Disconnect may have been inconsistently tightened.

Repair Code: RC-003-12-00-004523
Allotted Time: .50 HRS.
Inspection Code: N/A
Allotted Time: N/A

Photo(s) Required: YES, POST REMEDY
Prior Authorization Required: YES
Part(s) Kit Number: F100550300
Part(s) Return: NO, FIELD DESTROY

Turn off LP Gas at LPG Tank(s). Place vehicle in (P) Park and engage the Parking Brake. Disconnect the vehicles' battery Positive and Negative, disconnect any House battery(s) Positive and Negative, if equipped with a generator ensure it is off and lastly, ensure the vehicle is disconnected from shore power. Block any tires/wheels to prevent the vehicle from rolling. Failure to do so may result in electrocution, fire or other personal injury, property damage and/or death.

CERTAIN 2023 – 2025: ISC24FWSFXM, ISC24FWSFXM, ISC24FWSFXMCD & ISC24FWSFXMCD

USE A 12V METER TO ENSURE POWER IS COMPLETELY OFF AT THE LUGS TURN OFF THE SOLAR DISCONNECT

STEP 1: LOCATE THE MAIN 12V SERVICE DISCONNECT (FIGURE 1);

- REMOVE AND DISCARD THE FASTENERS, THEY WILL BE TOO LONG TO REUSE;

STEP 2: REMOVE THE 12V CABLES HOOKED TO THE STUD(S) ON THE DISCONNECT;

STEP 3: INSTALL THE NEW DISCONNECT;

- FASTEN THE NEW 12V SERVICE DISCONNECT TO IN PLACE OF THE OLD DISCONNECT WITH #8 X 1/2" WOOD SCREWS (4);
- PLACE THE CABLE THAT WAS ON THE LEFT STUD OF THE OLD DISCONNECT ON THE LEFT STUD OF THE NEW DISCONNECT;
- PLACE THE OTHER LARGE CABLE AND SMALL CABLE THAT WERE REMOVED FROM THE RIGHT STUD OF THE OLD DISCONNECT ON THE RIGHT STUD OF THE NEW DISCONNECT;
- ORIENTATE THE CABLES AS SHOWN IN FIGURE 2;

STEP 4: TIGHTEN THE LUG NUTS TO 80 INCH LBS.;

STEP 5: SNAP COVER ONTO THE BASE;

STEP 6: TEST FOR PROPER FUNCTIONALITY;

STEP 7: CLAIM REPAIR CODE.

PHOTOS ON THE NEXT PAGE FOR REFERENCE.

RECALL 24V202 / 2024-172 REMEDY INSTRUCTIONS



Make(s): ISATA
Model(s): MANY, SEE BELOW
Model Year(s): 2023 - 2025

Concern:
The nut on the backside of the Main 12V Disconnect may have been inconsistently tightened.

Repair Code: RC-003-12-00-004523
Allotted Time: .50 HRS.
Inspection Code: N/A
Allotted Time: N/A

Photo(s) Required: YES, POST REMEDY
Prior Authorization Required: YES
Part(s) Kit Number: F100550300
Part(s) Return: NO, FIELD DESTROY

FIGURE 1

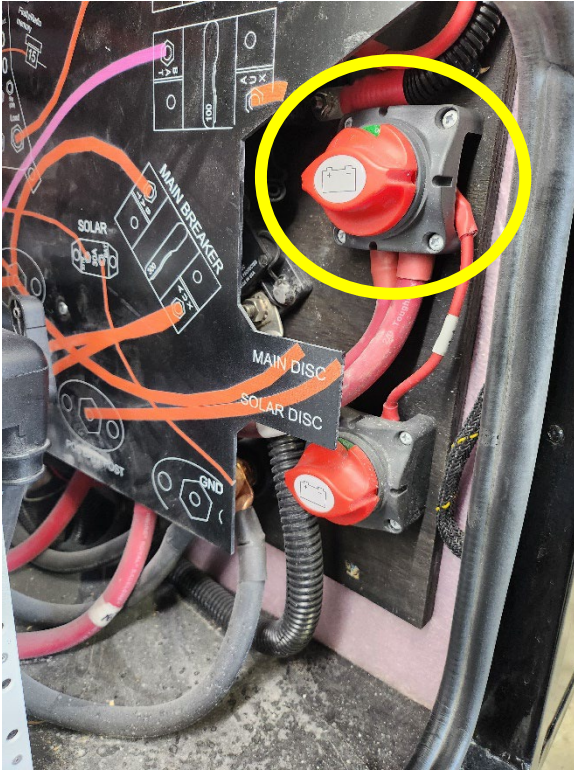


FIGURE 2

