







## Renogy Lithium Battery Firmware Update

<b>Bulletin Type:</b>	Recall	<b>Publication Date:</b>	Rev. <b>August 2024</b> June 2024 May 2024
<b>Bulletin #(s):</b>	24V-160 USA 2024-141 Canada	<b>Make(s):</b>	Jayco, Entegra Coach
<b>Job Code(s):</b>	9903603	<b>Model(s):</b>	Terrain, Solstice LI, Swift LI, Launch, Expanse LI, Ethos LI
<b>Flat Rate(s):</b>	9903603A .50 HR Renogy Battery Inspection Only 9903603B 1.5 HR Inspection and Battery Firmware Update	<b>Model Year(s):</b>	2021-2024

<b>Incident:</b>	Renogy Firmware Update to address Recall Remedy		
<b>Affected Units:</b>	2021-2024 Jayco Terrain, Solstice LI, Swift LI; 2021-2024 Entegra Coach Launch, Expanse LI, Ethos LI with Renogy 48V Lithium system		
<b>Parts Kit:N/A</b>	Parts Kit #: N/A		
	Part Kit Contents: N/A		
<b>Misc. Tools &amp; Supplies:</b>	Renogy will be sending the USBCAN Analyzer and Jumper cables to dealers.		
	1 - USBCAN Analyzer		
	1 - Jumper Cable – Male Amp Super Seal Connector to Bare Wire		





<b>Misc. Tools &amp; Supplies:</b>	1 - Jumper Cable-A – Female Amp Super Seal Connector to Grey Deutsche (DTM) Connector	
	1 - Jumper Cable-B – Female Amp Super Seal Connector to Male Amp Super Seal Connector	
<b>Parts Return Information:</b>	<b>N/A</b>	



## RENOGY Lithium Battery Firmware Update

Please read the following instructions thoroughly before starting the inspection and battery firmware update. If you have any questions or need some guidance throughout the inspection or battery firmware update procedure, please contact Renogy at [Recall@renogy.com](mailto:Recall@renogy.com) or give us a call at **(909) 870-1885**.

This is the safety alert symbol. It is used to alert you to potential personal injury hazards. Obey all safety messages that follow this symbol to avoid possible injury or death.

	<b>CAUTION</b>	
Indicates a potentially hazardous situation that, if not avoided, may result in minor or moderate injury. It may also be used to alert against unsafe practices.		



	<b>WARNING</b>	
Indicates a potentially hazardous situation that, if not avoided, may result in death or serious injury.		



## Table of Contents

<b>1. Inspection Process</b> .....	<b>4</b>
A. Checking for stuck contactors.....	4
B. Check for Cell Imbalance .....	7
<b>2. Driver Installation – Getting your PC Ready</b> .....	<b>7</b>
A. Materials Needed .....	8
B. Downloading the Renogy Battery Firmware Update Folder.....	8
C. Installing the Driver .....	10
D. Finding your BitLocker .....	24
<b>3. Firmware Bootloader Instruction</b> .....	<b>27</b>
<b>4. Debug Tool Instruction</b> .....	<b>40</b>
<b>5. Debug Tool Manual SOC% Calibration</b> .....	<b>46</b>

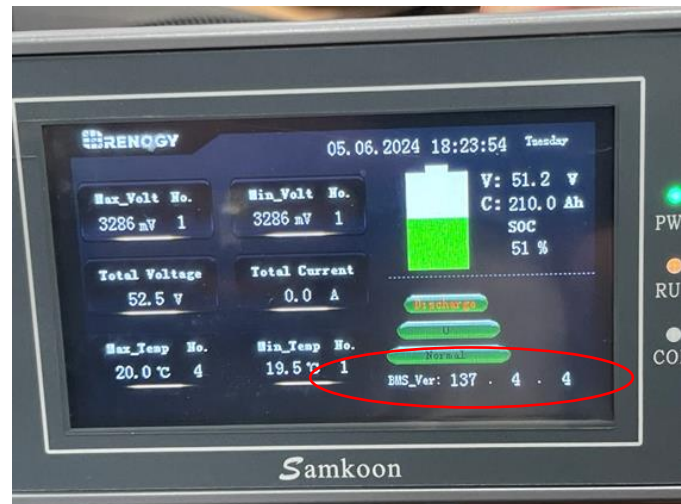
## 1. Inspection Process

Check the firmware version on the Samkoon screen. If the firmware version is 137.4.4 or higher you should stop and file a claim for inspection only including a photo of the Samkoon screen.

Before completing the firmware update, the battery should pass the following inspection to check for stuck contactors.

### A. Checking for stuck contactors

Being able to power the 12V or 48V circuits when the battery is “off” is the most obvious sign for stuck contactors. A stuck contactor will require immediate stoppage of use and require a battery replacement related to the recall.





**WARNING**

- DO NOT touch any terminals or connectors.

**CAUTION**

- DO NOT wear jewelry or other metal objects when working on or around the battery.

- Power down the lithium battery system.
  - Turn off the Inverter by pushing button on Inverter remote switch located near the Firefly Touchscreen so that the push button protrudes from its location and the green power light shuts off.
  - Verify all charging sources have been disconnected:
    - Alternator (Engine OFF)
    - Shore Power (Nothing plugged into shore power port)
    - Side Solar (Nothing plugged into side solar port)
    - Rooftop Solar – disconnect near battery in the 'OFF' position.
  - Turn off the 12V Master Disconnect (Main Power) located near the rear of the sliding door. Verify that the red light turns off.





D. Review the Samkoon Battery Screen “Total Current” to ensure all charging sources have been disconnected. The “Total Current” should be 0.0A ± 0.1A.



E. Press and release the Self-Locking Battery Switch. The button will flush in the ‘OFF’ position. For verification, the Samkoon Screen should be OFF.



F. With the battery now completely off, check if you have 12-volt power by turning on the 12V Master Disconnect (Main Power) located near the rear of the sliding door. If the light does not turn on, move on to Step G. **If the red light comes on, there is still power, and we have identified a stuck 12V contactor that requires immediate stoppage and battery replacement. Contact your dealer right away. Don't try to remove the battery yourself.**



G. Check if you have 48-volt power by pushing the button on the Inverter remote switch located near the Firefly Touchscreen so that it is pushed in. Wait about 1-2 minutes to see if the green power light turns on. **If the light comes on, there is still power, and we have identified a stuck 48V contactor that requires immediate stoppage and battery replacement. Contact your dealer right away. Don't try to remove the battery yourself.**



If no lights were observed during the 12V or 48V circuit checks, then you can move on to the next Step B.



## B. Check for Cell Imbalance

Cell imbalance is not a direct indicator of a stuck contactor, but attributed to variations in cell capacity, aging, charging, and discharging. However, it could suggest the presence of a stuck contactor.

**If you have any of the following conditions AND a stuck contactor, then you proceed with battery replacement under the recall. If you ONLY have cell imbalance and not a stuck contactor, then you must contact your dealer for a battery warranty replacement NOT RELATED to the recall.**

Cell imbalance could be defined by any of the following conditions below:

- A. If the voltage difference between the min and max cell voltage is greater than 800mv.
- B. If the battery total voltage is less than 32V.
- C. If the max cell reads 8,000mV or similar.
- D. If the min cell is under 2,000mV.

**WARNING: Do not attempt to charge the battery with the above conditions:**



If the battery requires replacement for any of the items listed, a photo should be taken of the Samkoon screen and submitted on an authorization request to Jayco Customer Service. Once the battery is replaced verify the software is version **137.4.4 or higher** and submit claim for the inspection, including a photo of the Samkoon screen, to close the recall.

## 2. Driver Installation – Getting your PC Ready

To ensure smooth driver installation, we recommend you have the following materials ready as well as access to administrative privileges on your computer if it is on a network.



**Note: The update is only compatible with Windows computers and not Mac OS systems. If you do not have a Windows computer, please reach out to your dealer, or contact Renogy at [Recall@renogy.com](mailto:Recall@renogy.com) or call us at (909) 870-1885.**

## A. Materials Needed

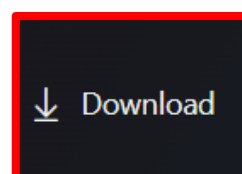
1. Laptop running Windows 10 with administrative privileges preferred.
  - a. The driver installation has been tested to operate on Windows 10 and Windows 11. Computers that are part of a network should have IT personnel nearby to unlock driver access to install the necessary driver to connect to the USB Can Analyzer as well as provide access to BitLocker if applicable.
  - b. In some cases, you will need your BitLocker to disable your driver to install the battery firmware driver needed to conduct battery update.
2. USB CAN Analyzer
  - a. The USB-Can Analyzer will be shipped with the harnesses needed to connect to the battery as well as a USB Cable to connect to your computer.
3. Access to the Driver and Firmware Installation Folders

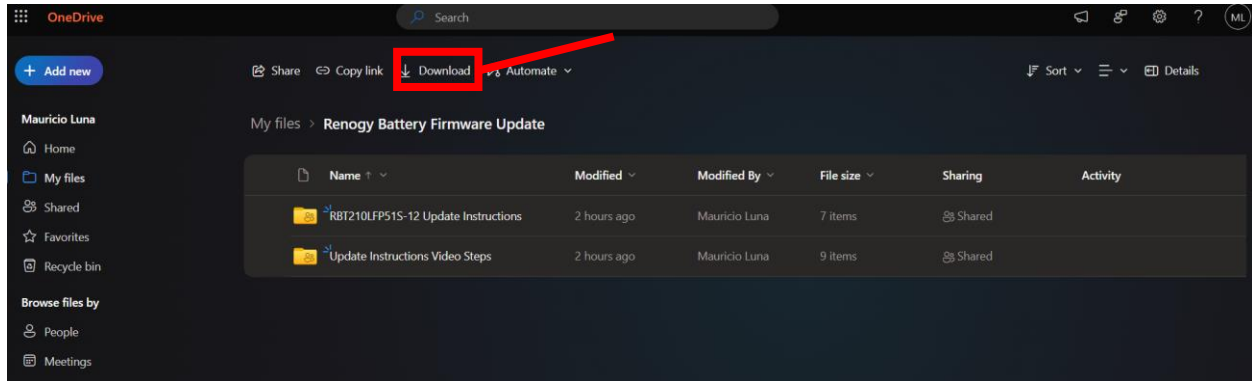


## B. Downloading the Renogy Battery Firmware Update Folder

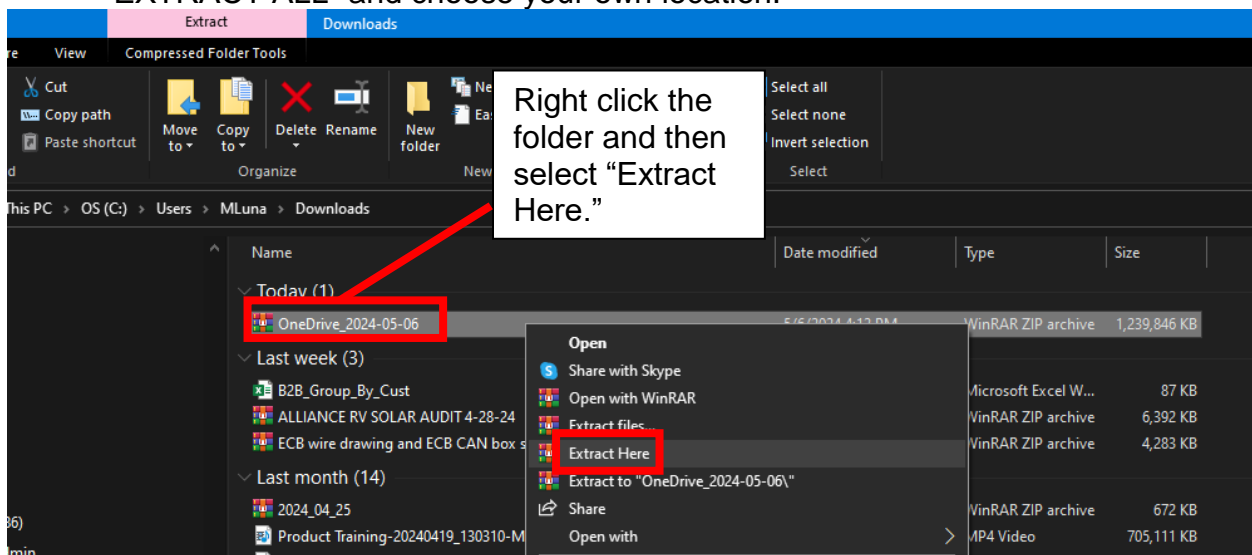
1. Click the below link to access the battery update folders and select "Download". You can also scan the QR Code which will take you to the same domain. It is recommended to be logged into another device to download the driver as it will require a restart of your computer.

<https://rb.gy/v2xtwg>

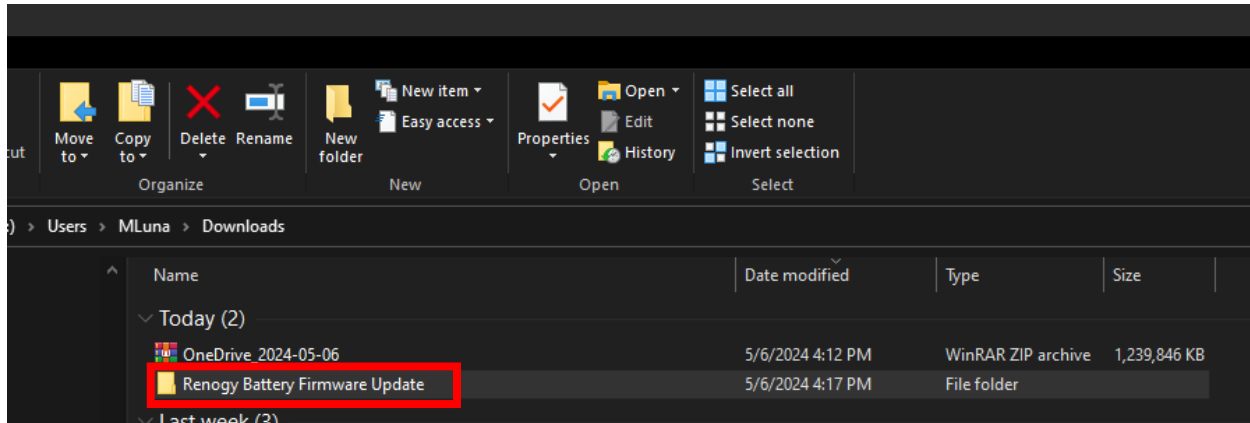




2. Go to the downloaded One Drive Folder location – typically in “Downloads” – and right click the zipped file and select “EXTRACT HERE” or “EXTRACT” or “EXTRACT ALL” and choose your own location.

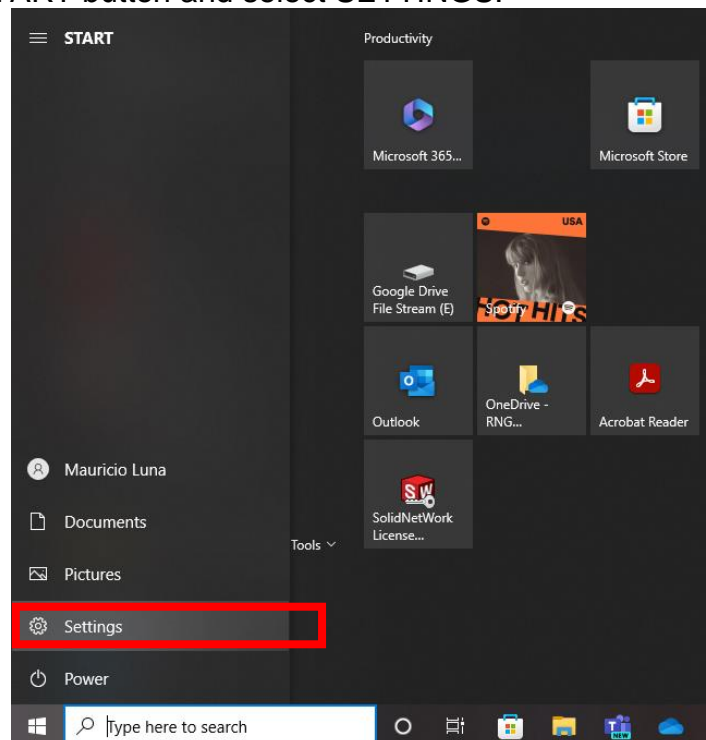


3. When finished, there will be a folder called “Renogy Battery Firmware Update” Folder

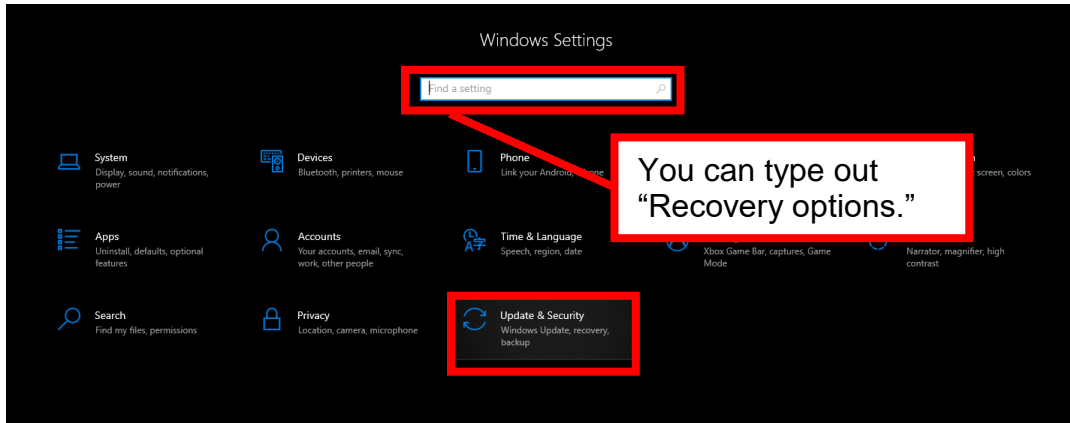


## C. Installing the Driver

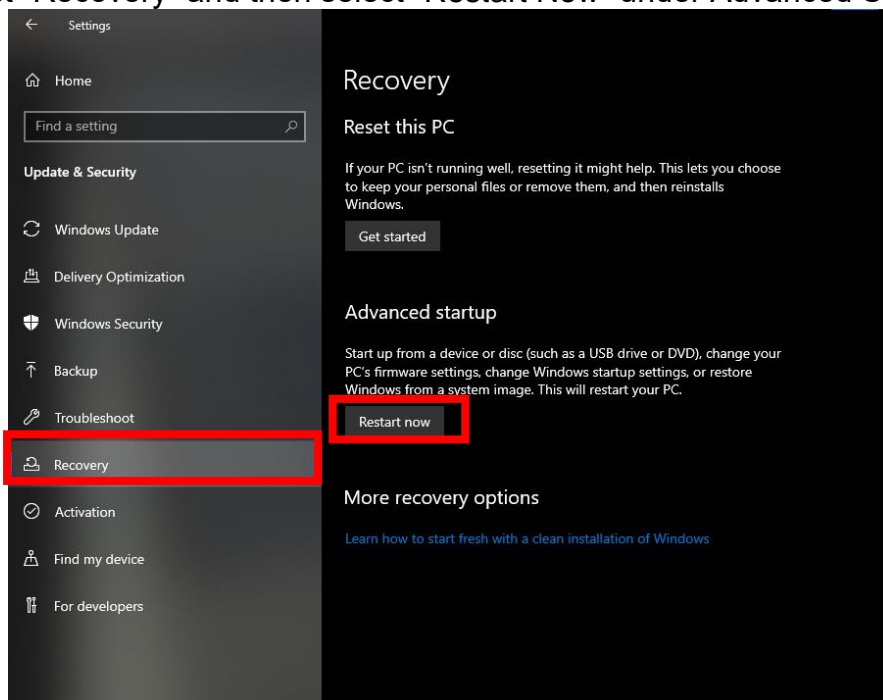
1. Click the START button and select SETTINGS.



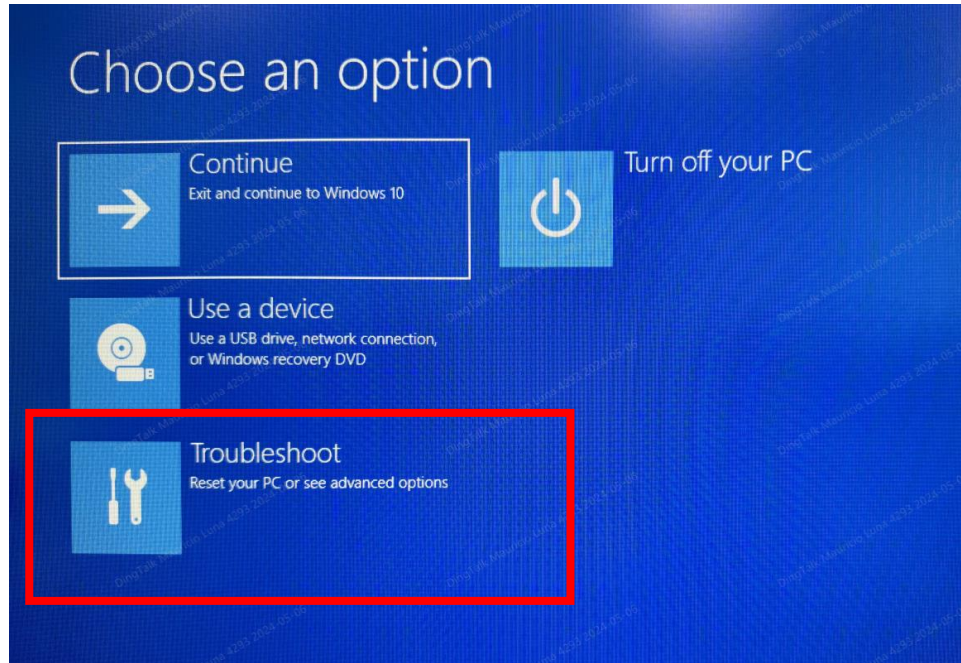
2. Select Update and Security. Alternatively, you can type in “recovery options.”



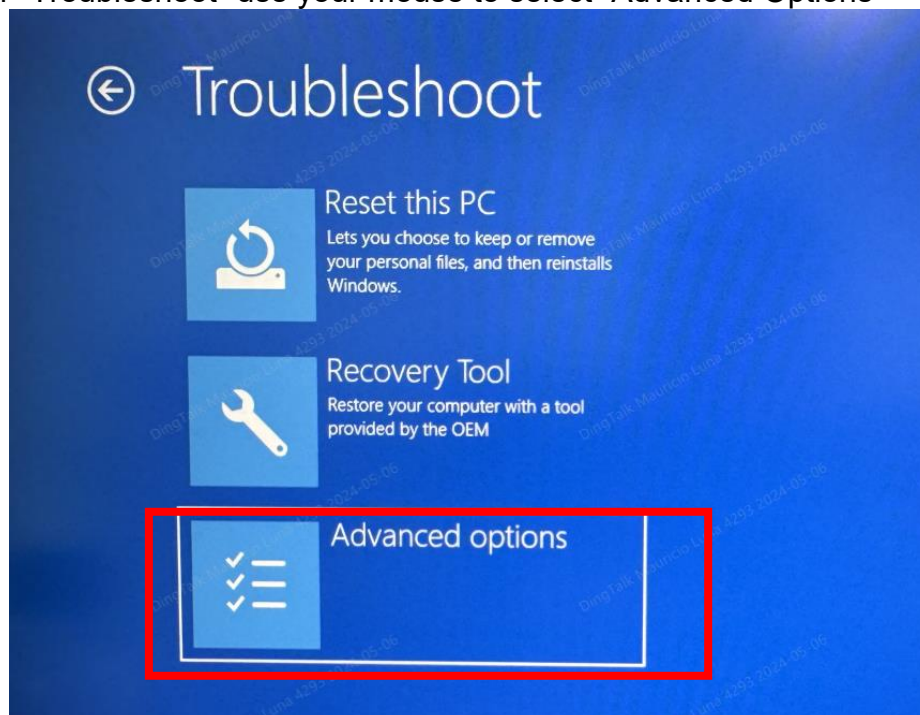
3. Select “Recovery” and then select “Restart Now” under Advanced Startup



4. Your computer will restart and then prompt you to select from the following options. Use your mouse to select “Troubleshoot.” Alternatively, you can use your arrow keys and press enter.

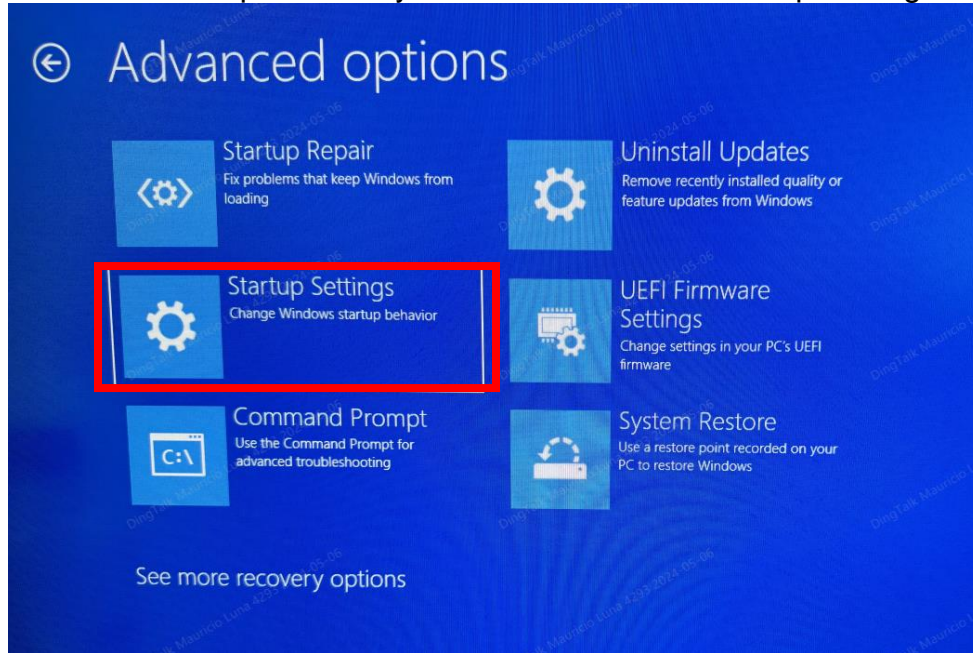


5. After “Troubleshoot” use your mouse to select “Advanced Options”

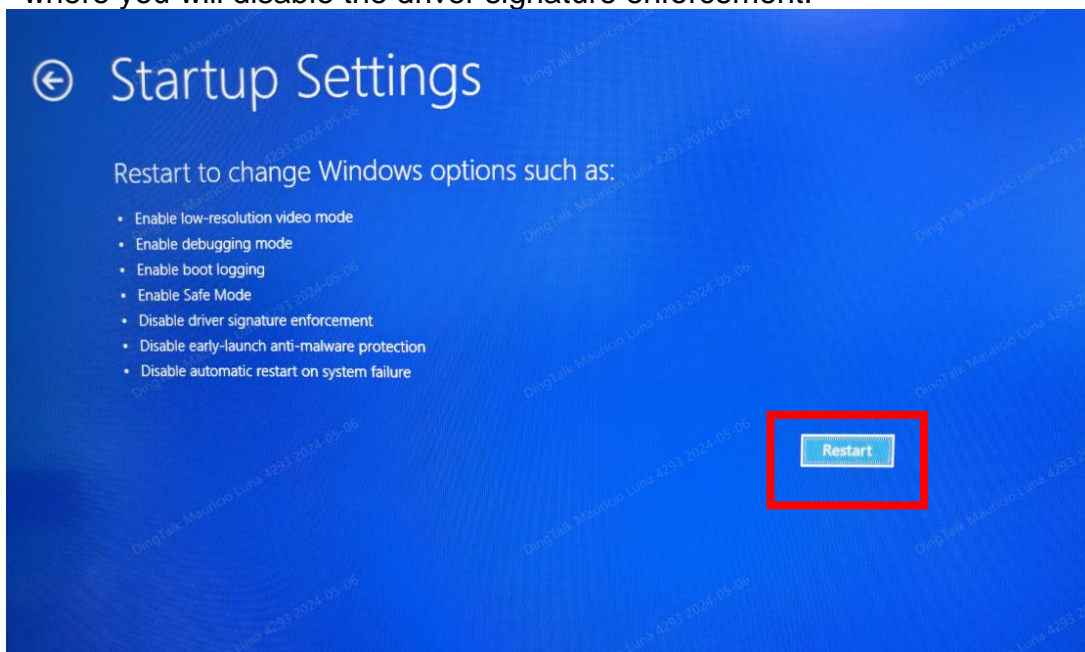




6. Under Advanced Options use your mouse to select “Startup Settings”



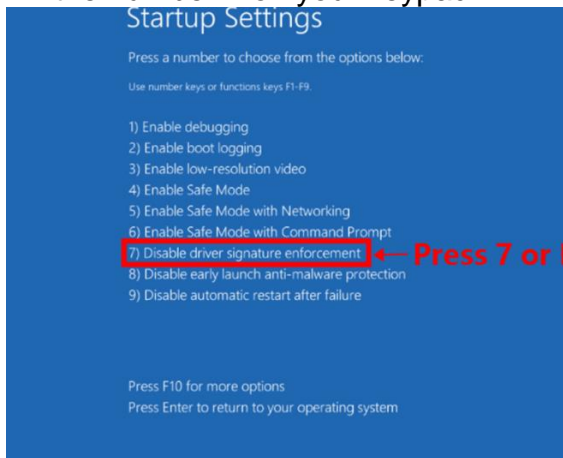
7. Under Startup Settings, you will press “ENTER” again to restart your computer where you will disable the driver signature enforcement.





8. When your computer restarts, you will then be given the following options and make sure to select number 7 – Disable driver signature enforcement – by using your mouse to select it or pressing the number 7 on your keypad

If you did not get to the Startup Settings and instead get BitLocker below, please see the next section “D. Finding your BitLocker” for finding your BitLocker then proceed to redo the steps Highlighted in “C. Installing the Driver” after finding your BitLocker.

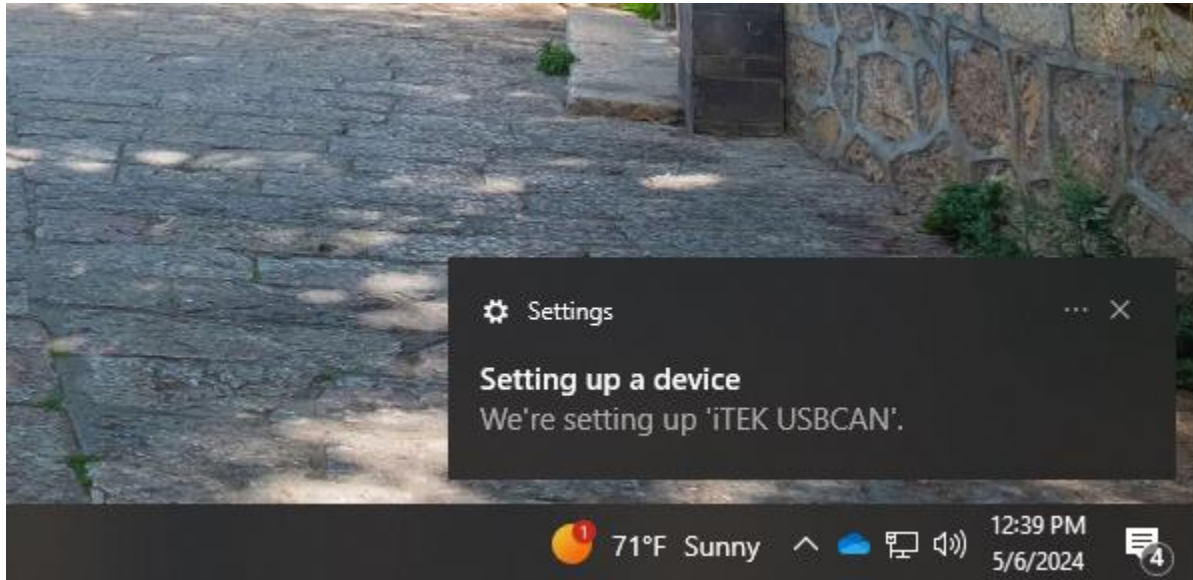


Connect the USB Can Analyzer to your computer to automatically try to download the ITEK Driver needed to conduct battery updates. Connect the USB-B Side of the cable to the USB Can Analyzer and connect the USB A side to your computer.

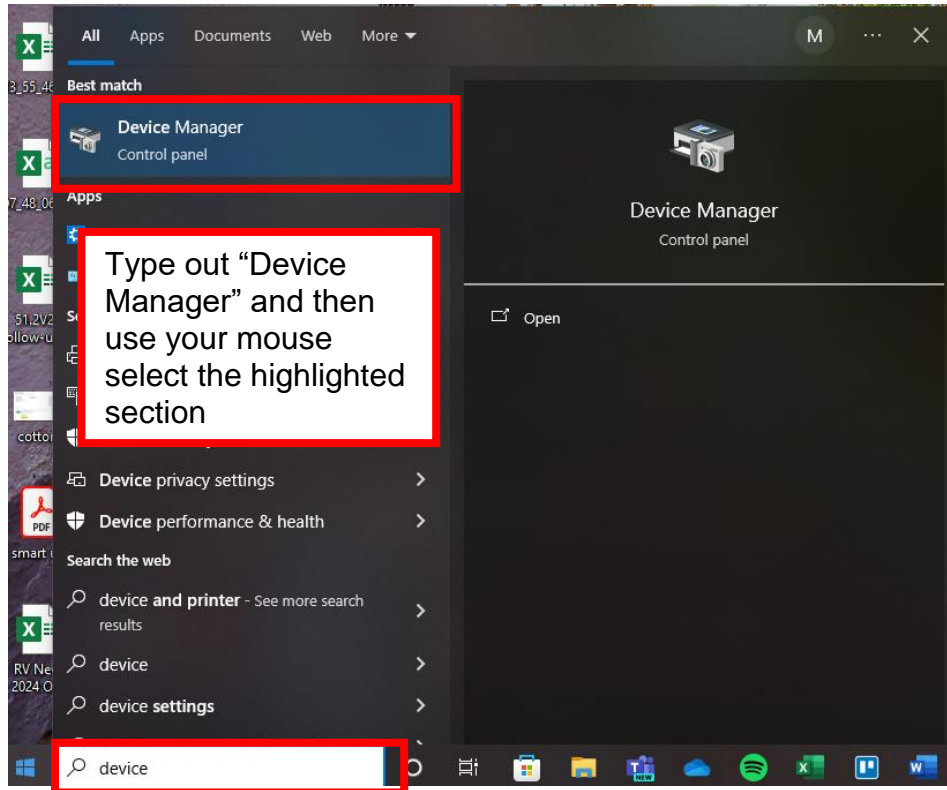




9. Upon connecting, the driver will attempt to automatically install if you do not have driver enforcement enabled.

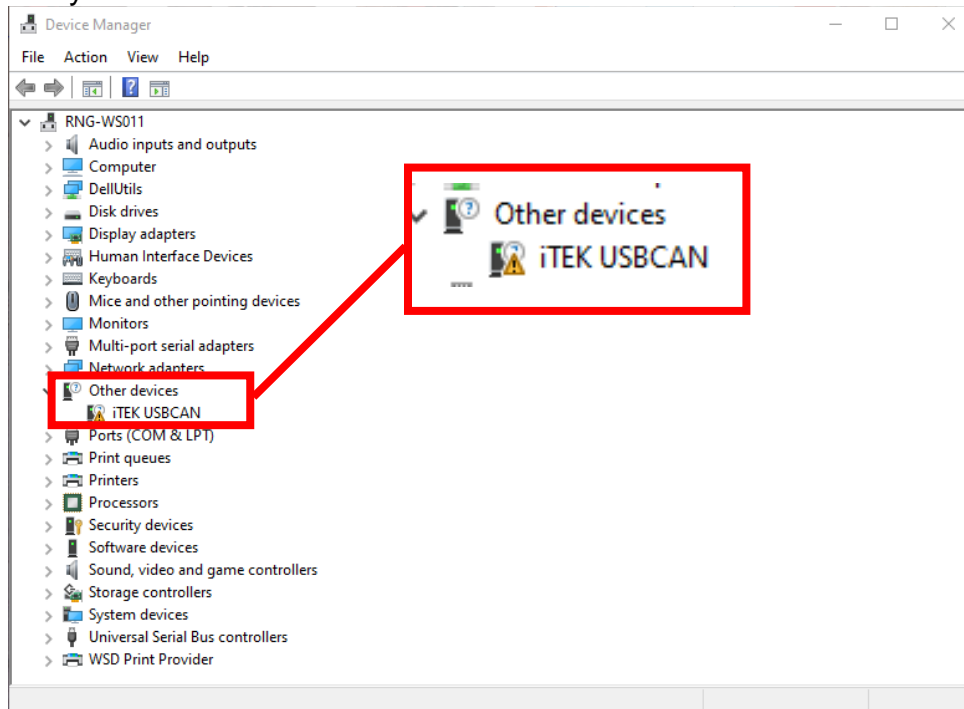


10. Upon completion, you need to validate whether the driver installed correctly by going to Device Manager. Go to Start, type in "DEVICE MANAGER" and select the following to open the window.

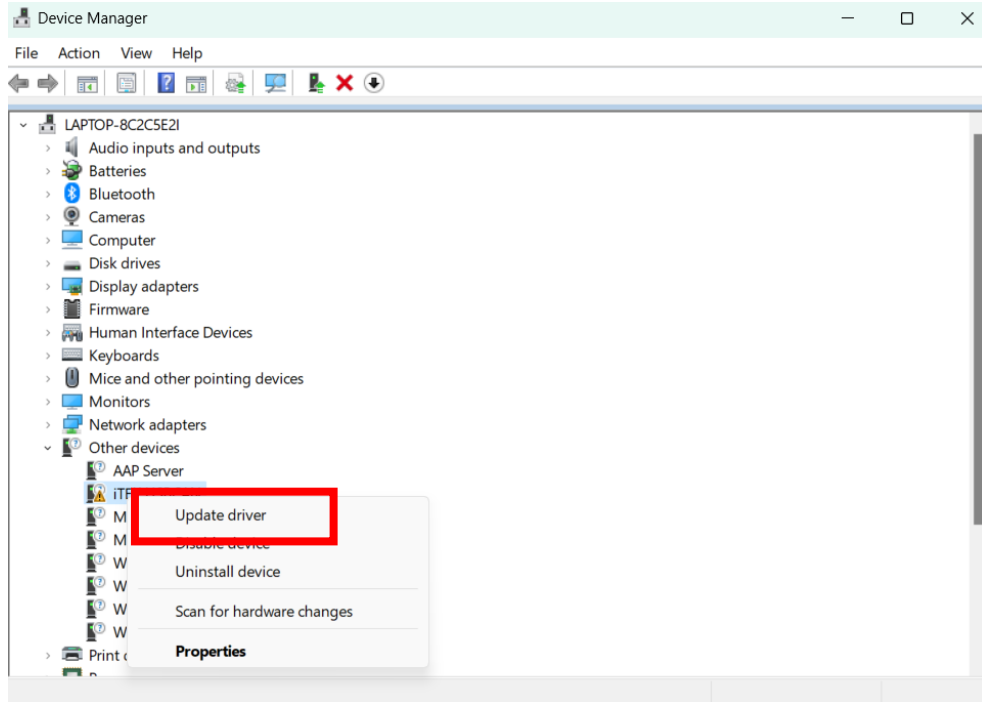




11. If the ITEK USBCAN is shown under “Other Devices” as well as has a caution symbol, then driver needs to be updated to be correctly installed. It should normally fall under Universal Serial Bus Controllers

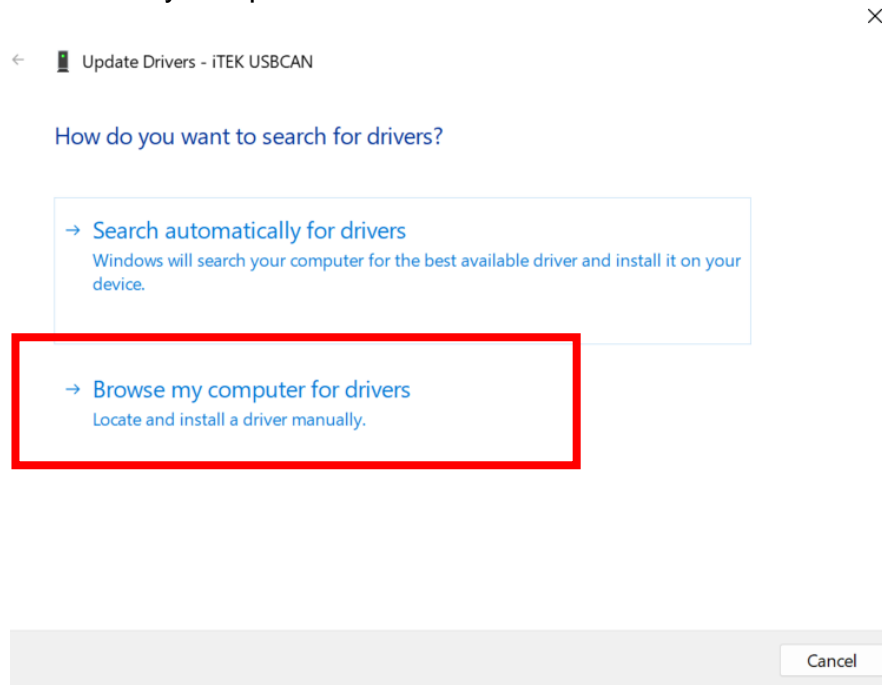


12. Right click the ITEK USB Driver and select “UPDATE DRIVER”

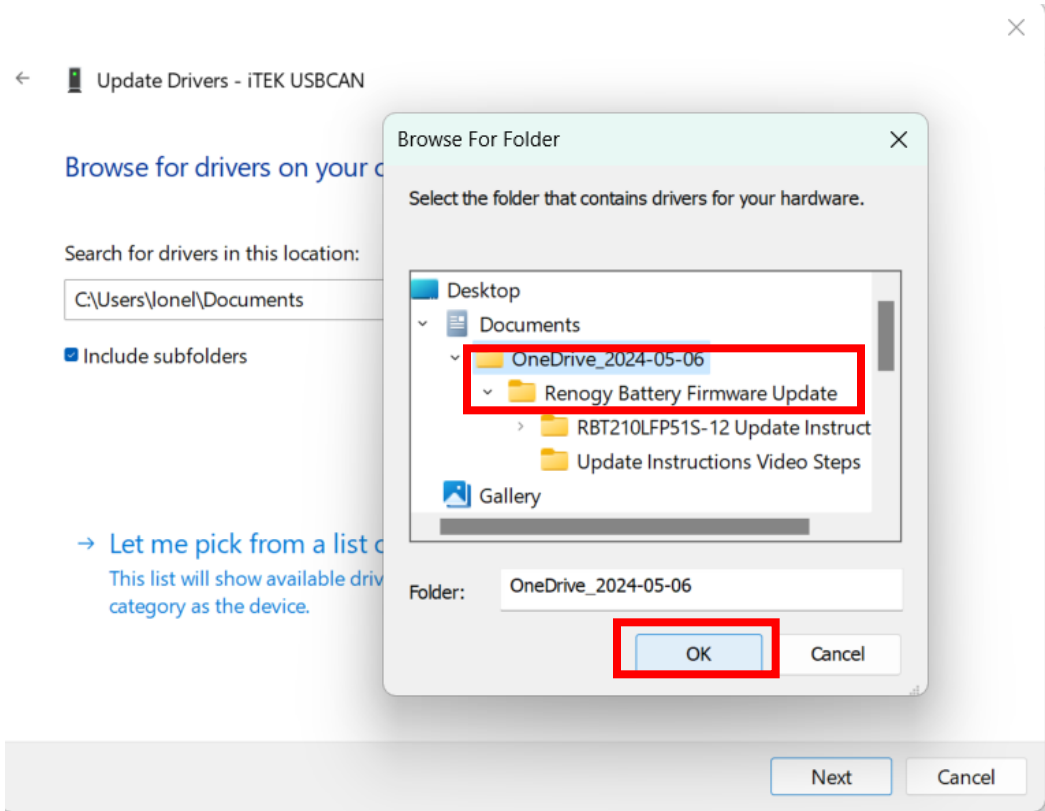




13. Select Browse my computer for drivers

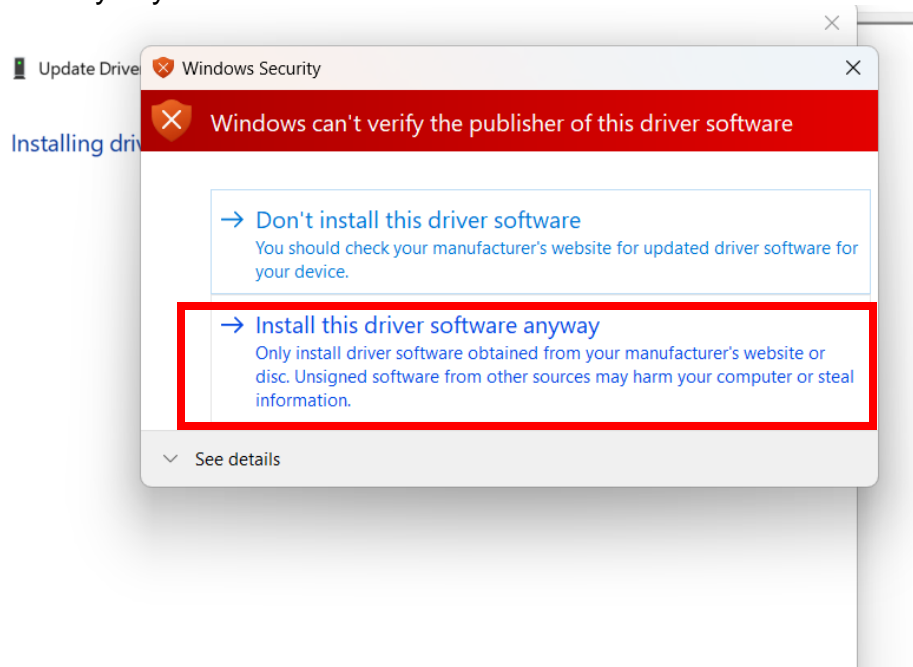


14. Select Browse and locate the folder where you downloaded the “Renogy Battery Firmware Update” folder. It will be in Downloads by default. Then select Okay.

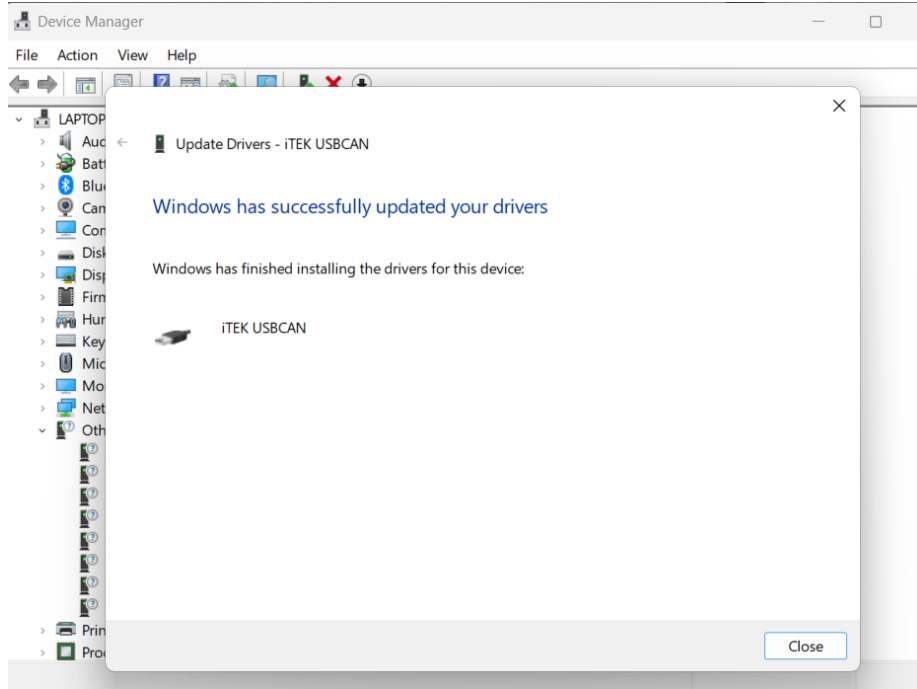




15. Windows will give the following prompt and ensure to select the install the driver software anyway.



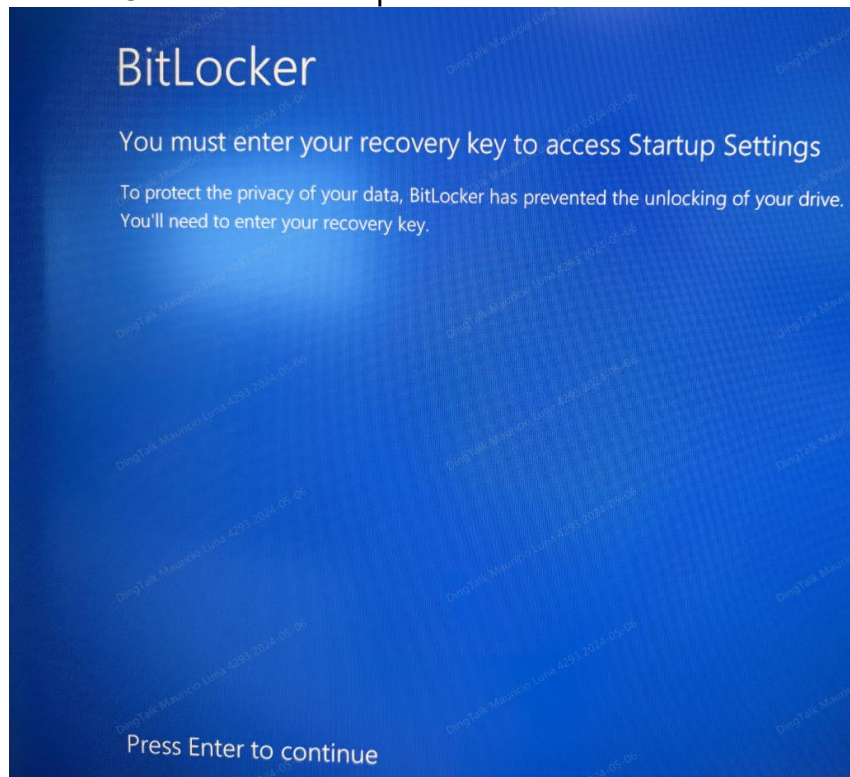
16. The driver has been installed and you are now ready to begin battery firmware update. You can proceed to section **3. Firmware Bootloader Instruction**





## D. Finding your BitLocker

1. Press Enter to Continue then “skip this drive”.



2. To find your recovery key, you will need to login to your computer like normal.
3. You can access your BitLocker through Microsoft or by clicking the following link:

<https://account.microsoft.com/devices/recoverykey>



4. Once you log into your Microsoft account, you select Devices and go to your current computer device and select “View BitLocker Keys”

The screenshot shows the Microsoft account 'My Account' page for Mauricio Luna. The left-hand navigation menu is visible, with 'Devices' highlighted. A red box highlights the 'Devices' option in the menu, and a red arrow points to the 'Devices' section in the main content area. In the main content area, the 'Devices' section is expanded, showing a list of devices. A red box highlights the 'Devices' option in the expanded menu. A red box also highlights the first device in the list, 'DESKTOP-5AK0CTD', with a red arrow pointing to it. A text box with a red border says 'Select “Devices” from the menu'. Another text box with a red border says 'Click on your device to access the drop-down menu.'

Device Name	OS	Status
DESKTOP-5AK0CTD	Windows	Active
eng01	Windows	Active
Andy2019	Windows	Inactive
RNG-LT027	Windows	Inactive
Mauricio	Windows	Inactive
SALE07	Windows	Inactive



My Account

Mauricio Luna  
Mauricio.Luna@renogy.com

Overview  
Security info  
**Devices**  
Password  
Organizations  
Settings & Privacy  
My sign-ins  
My Apps

### Devices

If you lose a device or no longer use it, disable it so no one else can gain access to it. To re-enable it after it's been disabled, contact your admin.

Device name	Operating system	Status
DESKTOP-5AK0CTD	Windows	Active
eng01	Windows	Active
Andy2019	Windows	Inactive
RNG-LT027	Windows	Inactive
Mauricio	Windows	Inactive
SALE07	Windows	Inactive

Organization Status: Active

Device object ID: 7a8f3d15-d7ab-442b-b0ef-e9ecfbcd180d

Buttons: Disable lost device, View BitLocker Keys

Text box: Click "View BitLocker Keys"

5. Then you select Show recovery key and **write down this BitLocker code for the next page**

Devices

If you lose a device or no longer use it, disable it so no one else can gain access to it. To re-enable it after it's been disabled, contact your admin.

Device name	Operating system	Status
DESKTOP-5AK0CTD	Windows	Active
eng01	Windows	Active
Andy2019	Windows	Inactive
RNG-LT027	Windows	Inactive
Mauricio	Windows	Inactive
SALE07	Windows	Inactive

Organization Status: Active

Device object ID: 7a8f3d15-d7ab-442b-b0ef-e9ecfbcd180d

Buttons: Disable lost device, View BitLocker Keys

Side Panel: BitLocker keys for DESKTOP-5AK0CTD

- Operating System Drive
- Key ID: bc1f16ea-506f-4a91-b509-ba6f7c79935f
- Button: Show recovery key

6. Once you have your BitLocker Key, proceed to redo the steps in the previous section **C. Installing the Driver**



### 3. Firmware Bootloader Instruction

If your battery passed the inspection process, then you may proceed with updating the battery firmware to Version 137.4.4.

**CAUTION**

- ❑ DO NOT wear jewelry or other metal objects when working on or around the battery.

**WARNING**

- ❑ DO NOT touch any terminals or connectors.

#### 1. Power down the lithium battery system.

A. Verify all charging sources have been disconnected:

- i. Alternator (Engine OFF)
- ii. Shore Power (Nothing plugged into shore power port)
- iii. Side Solar (Nothing plugged into side solar port)
- iv. Rooftop Solar – disconnect near battery in the 'OFF' position



B. Turn off the 12V Master Disconnect (Main Power) located near the rear of the sliding door.

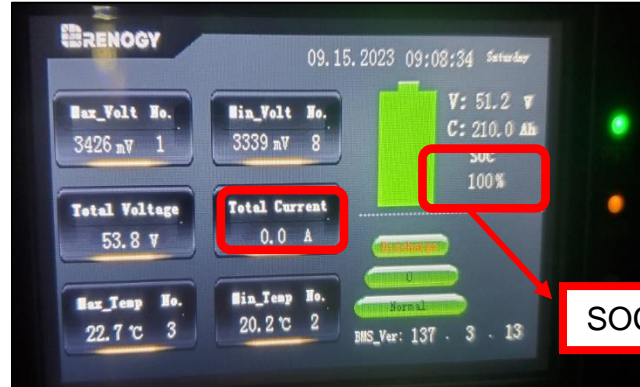


C. Turn off the Inverter by pushing button on Inverter remote switch located near the Firefly Touchscreen so that the push button protrudes from its location and the green power light shuts off.





D. Review the Samkoon Battery Screen “Total Current” to ensure all charging sources have been disconnected. The “Total Current” should be 0.0A ± 0.1A.



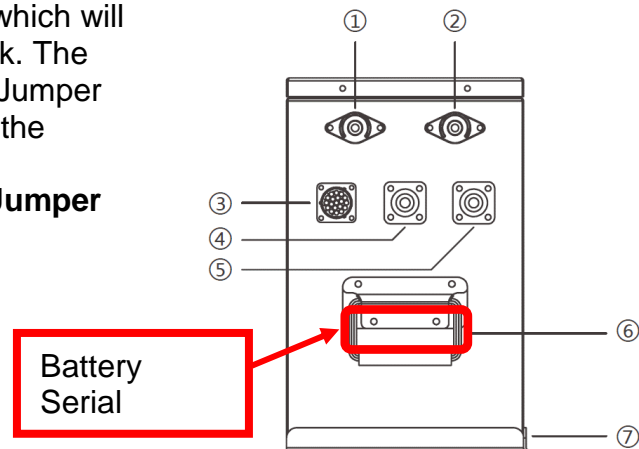
E. Record the reported percentage - SOC%, as this will be used later for manual calibration of the battery.

F. Press and release the Self-Locking Battery Switch. The button will flush in the ‘OFF’ position. For verification, the Samkoon Screen should be OFF.





2. Locate the Battery Serial Number which will be by the battery handle in the back. The battery serial will determine which Jumper Cable you will be using to conduct the Bootloader.

**Note: Most batteries will be using the Jumper Cable**





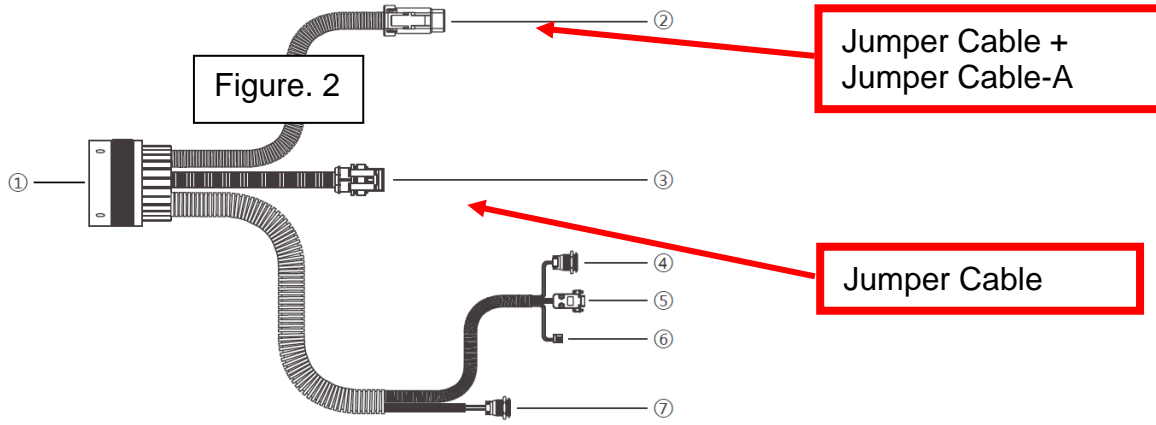


Battery Serial	Cable	Note
<p>If your battery serial begins with 23RBC, 22RBC, or 21RBC...</p>	<p>Jumper Cable – Male Amp Super Seal Connector to Bare Wire</p> 	<p>Most Common</p>
<p>If your battery serial begins with TE05...</p>	<p>Connect the Jumper Cable + Jumper Cable-A together so that you have Bare Wire and Grey Deutsche (DTM) Connector on the ends.</p> 	<p>Rare</p>



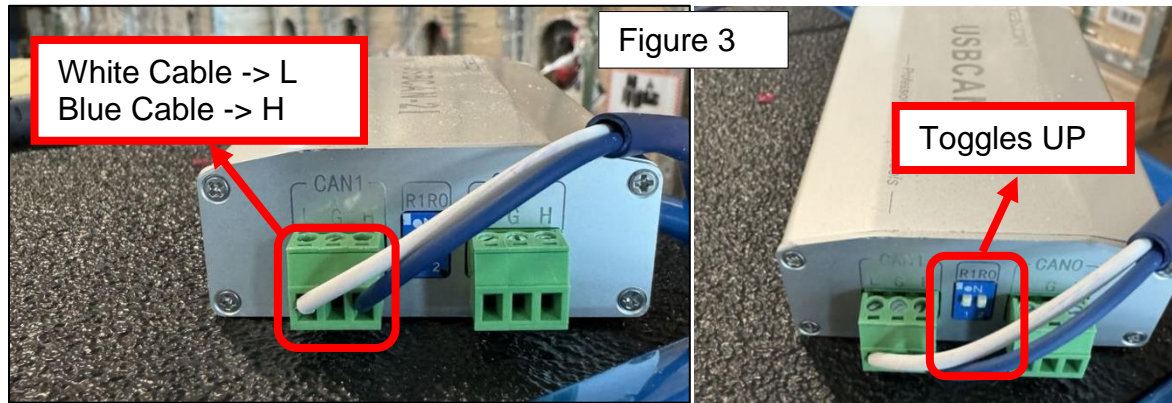
- Locate the battery harness and connect your respective jumper cable to the respective connector. The Jumper Cable will connect to the Amp Connector on the battery harness labeled “Debug”, while the Jumper Cable + Jumper Cable-A will connect to the grey DTM connector on the battery harness labeled “Generator” (Figure 2)

Cable	Connecting Point
<p>Jumper Cable – Male Amp Super Seal Connector to Bare Wire</p> 	<p>Connect to the Black Amp Super Seal Connector. This connector will be labelled on the “Debug” line of the battery harness. <b>Note: Remove the protective dust protector cap</b></p>
<p>Connect the Jumper Cable + Jumper Cable-A together so that you have Bare Wire and Grey Deutsche (DTM) Connector on the ends.</p> 	<p>Connect to the grey DTM Connector. This connector will be labeled on the “Generator” line of the battery harness. <b>Note: You may have to disconnect it from the APS</b></p>



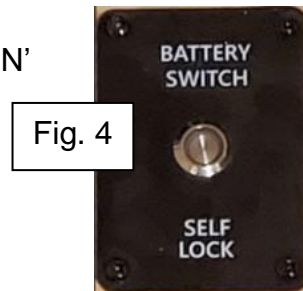


- Verify the USB-CAN analyzer has both toggles in the ON position (toggles up) as shown. (Figure 3) Also verify that the white bare wire is inserted into the CAN1 “L” terminal, and blue bare wire end is inserted into the CAN1 “H” terminal.

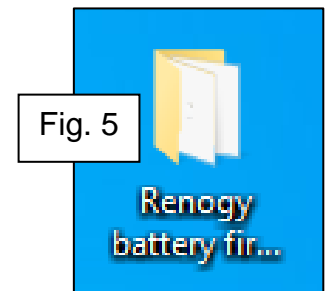


- Connect the iTekon USB-CAN analyzer to the computer with a USB cable.

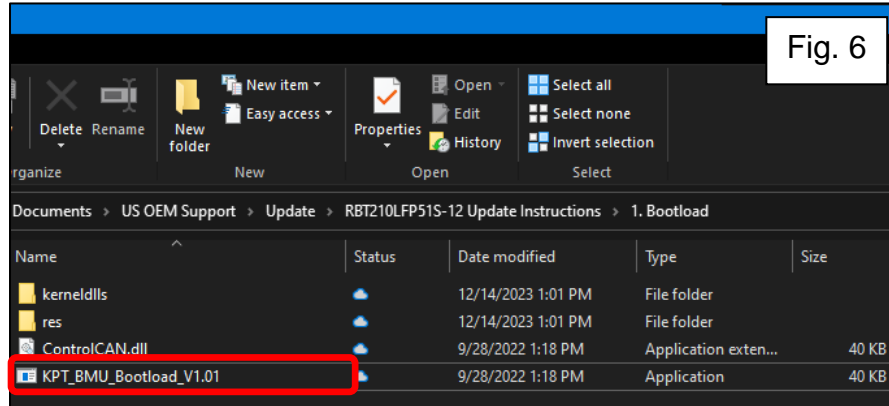
- Press and release the Self-Locking Battery Switch. The button will be depressed in the ‘ON’ position. (Figure 4)



- Go to the Renogy Battery Firmware Folder that you downloaded and open. (Figure 5)

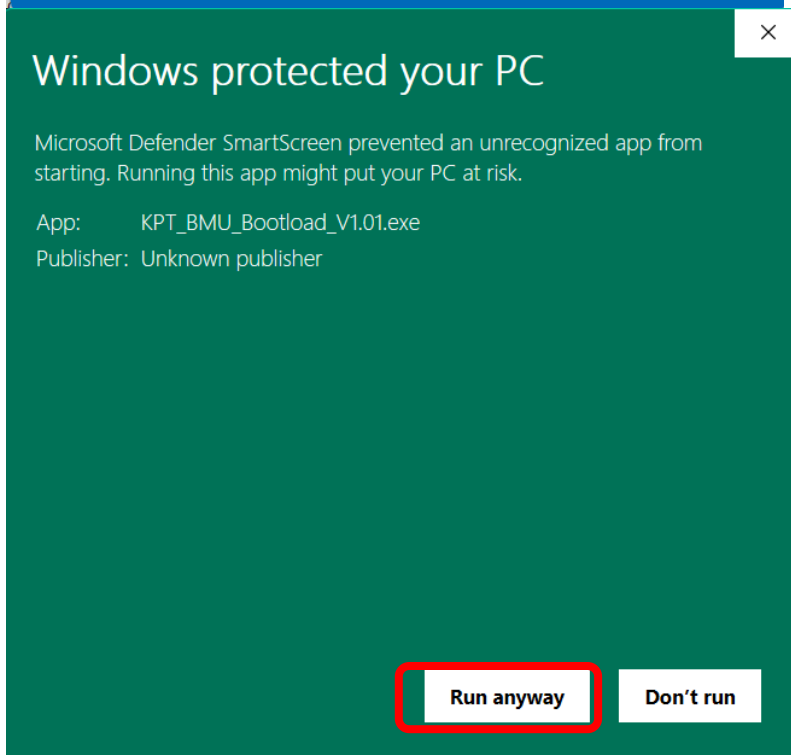
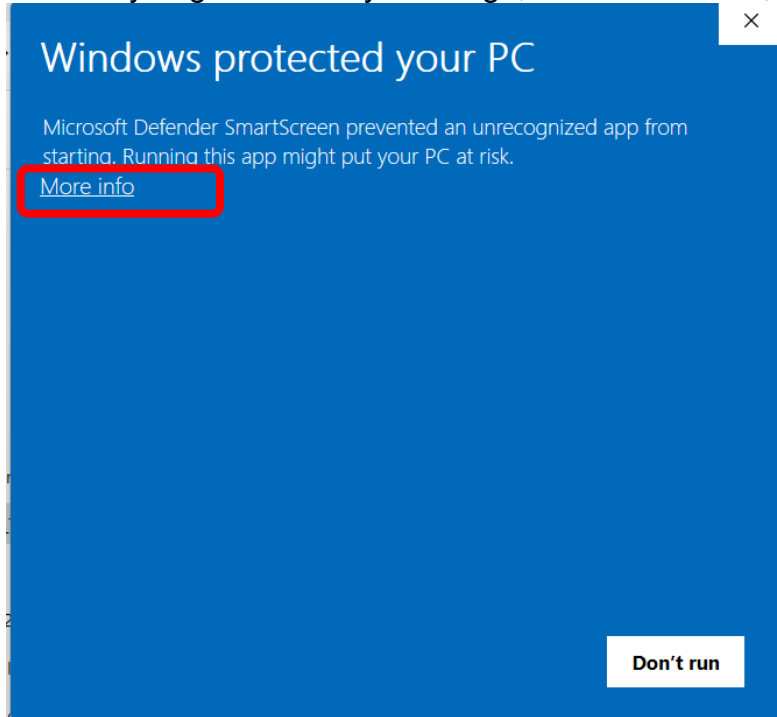


- Open the “RBT210LFP51S-12 Update Instructions” then select “1. Bootload Folder” and then Run the KPT \_BMU\_Bootload\_V1.01.exe. (Figure 6)





9. If you get a security message, click “More Info”, then “Run Anyway”



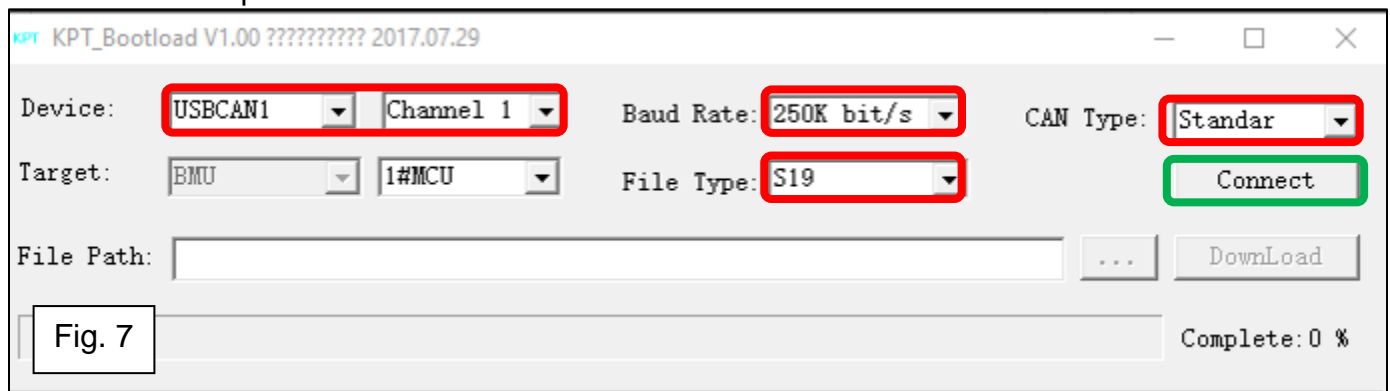


Verify and change the following settings (Figure 7 – Red):

- A. Device: USBCAN1, Channel 1
- B. Baud Rate: 250K bit/s
- C. CAN Type: Standard
- D. File Type: S19.

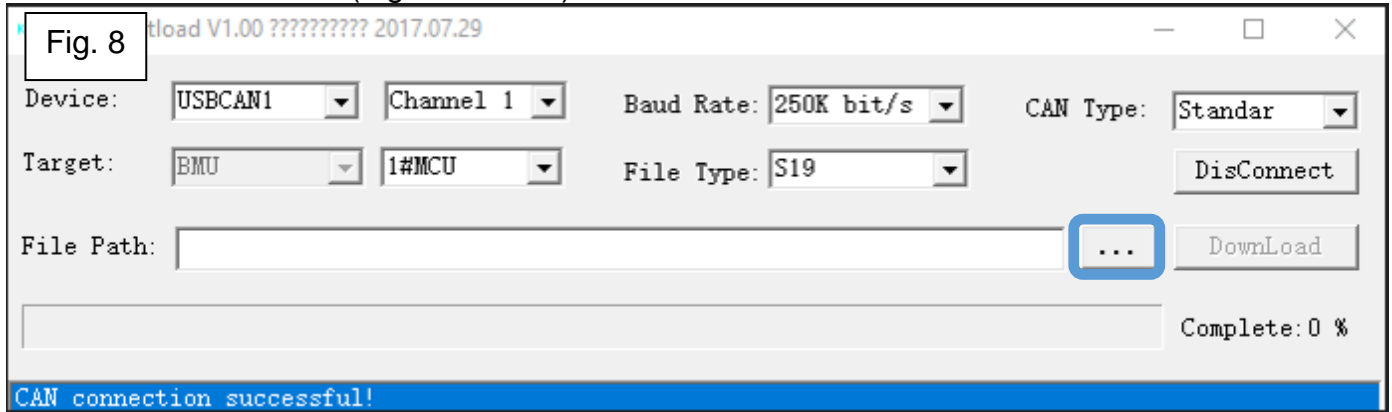
10. Click **Connect** (Figure 7 – Green) to connect the battery to the KPT Bootload. The CAN connection successful prompt appears. (Figure 8)

**NOTE:** If connection fails, close the Bootload program , unplug the USB cable from the computer for approximately 5 seconds and re-start with step #7.



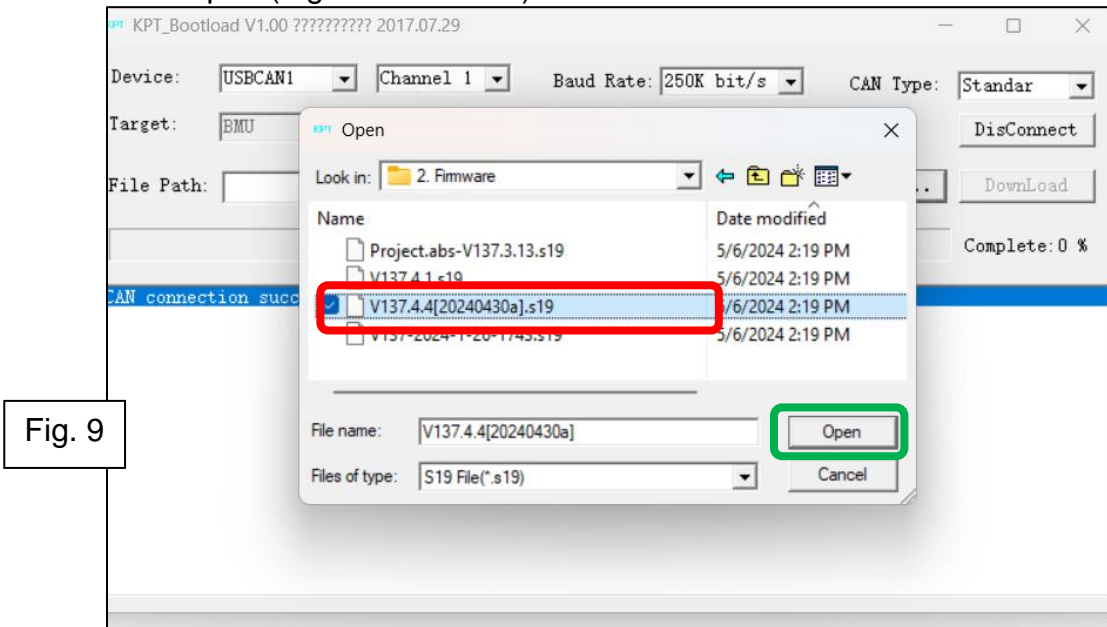


11. Select the 3 dots (Figure 8- Blue)



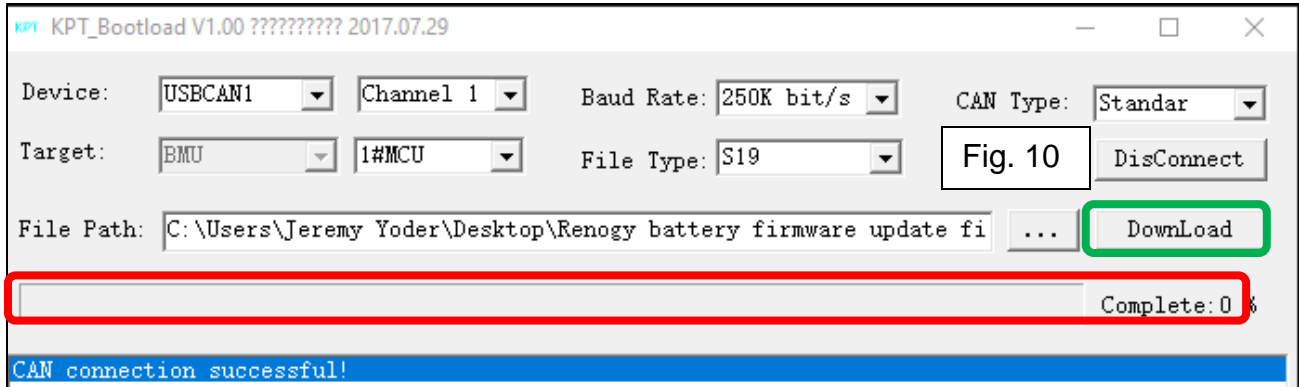
12. Open the Firmware Folder and select **V137.4.4[20240430a].S19** File (Figure 9 - Red)

13. Select Open (Figure 9 – Green)





14. Select “Download”. (Figure 10 - Green)

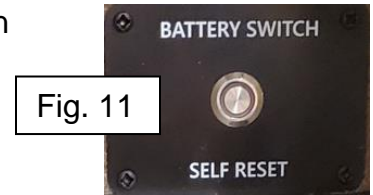


15. Go to the ‘Battery Switch Self Reset’ button (Figure 11) and ensure you have the computer screen visible to you from that location so that you can observe the update percentage as it progresses.

16. Press and hold the ‘Battery Switch Self Reset’ button until the “Complete: %” (Figure 10 –Red) reaches goes from 0 to 100%. This process should take 1-2 minutes.

**Note:** If the download percentage does not populate, close the Bootloader program, unplug the USB cable from the computer for approximately 5 seconds and re-start with step #7.

- A. While it is downloading, it is normal to see the Samkoon screen show a “No Device Response” message. This should disappear about the same time as download reaches 100%. (Figure 12)
- B. Read the **BMS\_ver** in the lower right corner of the battery monitor. The **updated** BMS Firmware should now read 137.4.4. (Figure 13)



**Note:** The State of Charge (SOC%) might automatically calibrate to 0% or 100% and require manual calibration as one of the last steps of this instruction.



Fig. 12

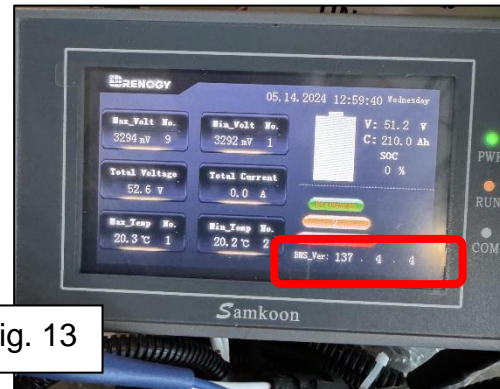


Fig. 13

**Note:** Upon successful download, the Samkoon screen may also power off. As long as the BMS Version number reflects 137.4.4, the bootloader still went through.

17. Click Yes on the **Download Successful** window and close the KPT Bootload. (Figure 14) If the **Download Successful** window does not appear, the **Battery Switch Self Reset** button can be released when the Complete reaches 100%. (Figure 14 –Blue)

18. When complete, the Bootload should disconnect automatically. If not, select **DisConnect** (Figure 14 -Green) and close the window.

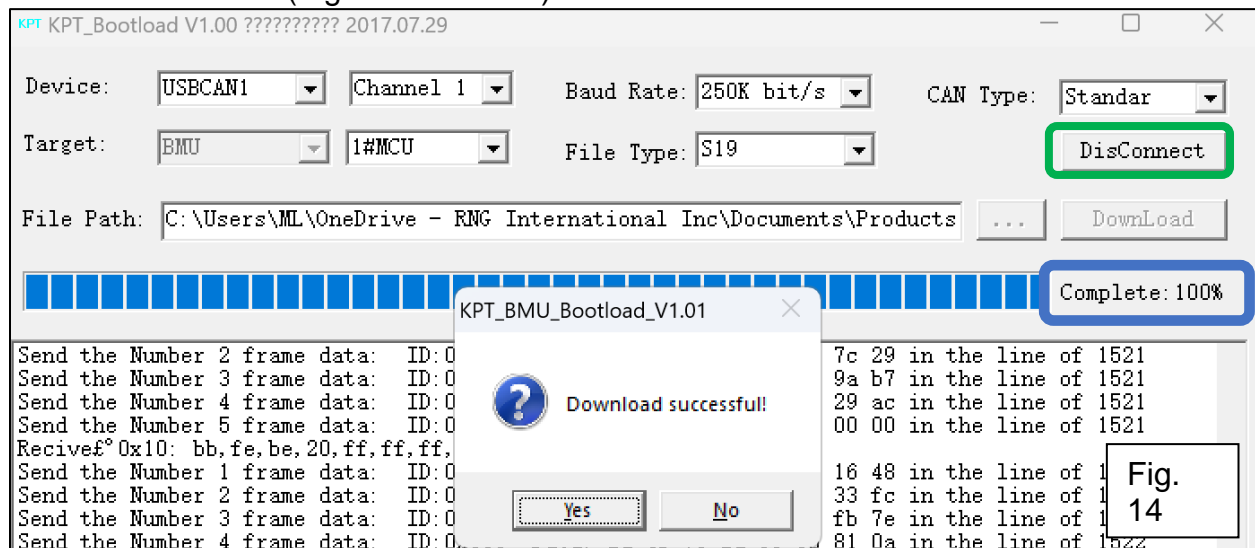


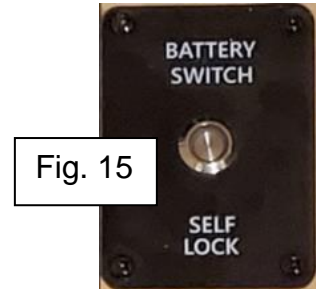
Fig. 14

19. Press and release the Self-Locking Battery Switch. The button will be flush in the 'OFF' position. For verification, the Samkoon Screen should be OFF. (Figure 15)



20. Disconnect the USB from your laptop for approximately 15 seconds before starting the Debug Tool Instruction.



**Note: It is important to disconnect the USB from the laptop to reset the USB Can Analyzer so that it will successfully connect in the next program. Failure to act on this will not allow the next program to take place.**





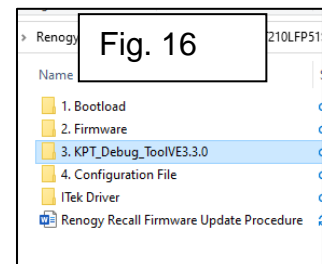
## 4. Debug Tool Instruction

For the Debug Tool Instruction, you will only need the Jumper Cable with the Male Amp Super Seal Connector.

Battery Serial	Cable	Note
<p>If your battery serial begins with 23RBC, 22RBC, or 21RBC...</p>	<p>Jumper Cable – Male Amp Super Seal Connector to Bare Wire</p> 	<p>Most Common</p>
<p>If your battery serial begins with TE05...</p>	<p>Connect the Jumper Cable + Jumper Cable-B together so that you have Bare Wire and Male Amp Super Seal Connector on the ends.</p> 	<p>Rare</p>

1. Disconnect and then Reconnect the USB cable to reset the USBCAN Analyzer.

2. Go to the Renogy Battery Firmware Folder on the desktop screen and open the KPT\_Debug\_ToolVE3.3.0.exe-Shortcut. (Figure 16)





3. Turn on the lithium battery: Turn battery on with the self-locking switch and self-resetting switch. (Figure 17)

A. Press and release the self-locking switch (typically installed behind an access panel near the lithium battery)

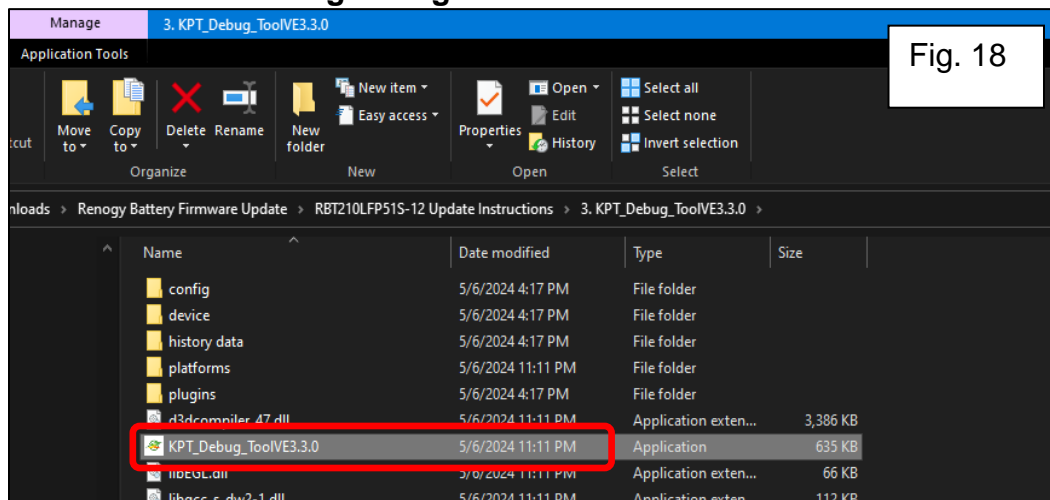
B. Next press and hold the self-resetting switch (typically installed overhead cabinet near Firefly touchscreen) for approximately 5-10 seconds to turn on the battery.

C. To verify the system is ON, the Samkoon screen lights should be ON (PWR and RUN) and the COM light flashing.



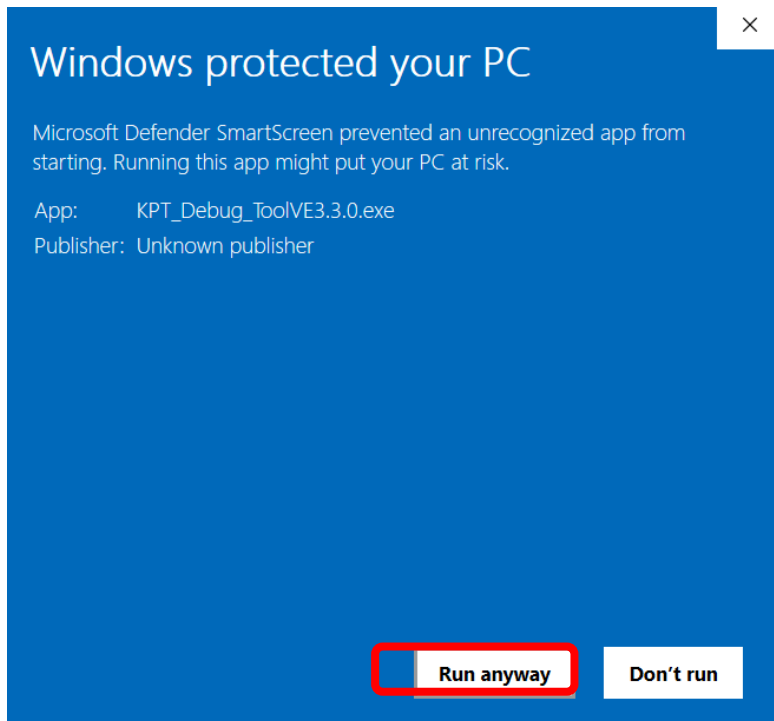
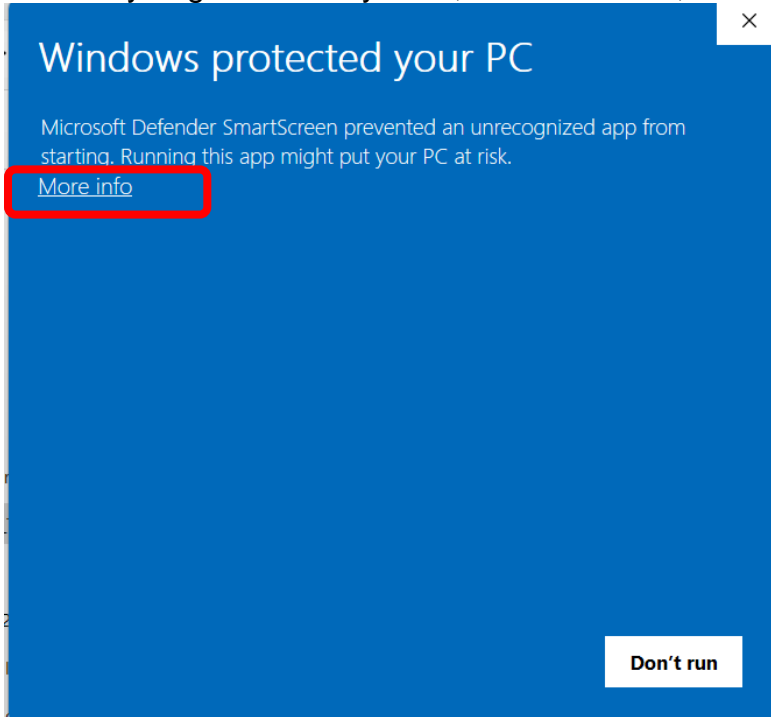
4. Run the KPT\_Debug\_ToolVE3.3.0.exe-Shortcut (Figure 18)

**Note: If the program fails to load or you experience any issues, close the program, disconnect the USB Can Analyzer, Reconnect the USB Can Analyzer, then run the KPT Program again**





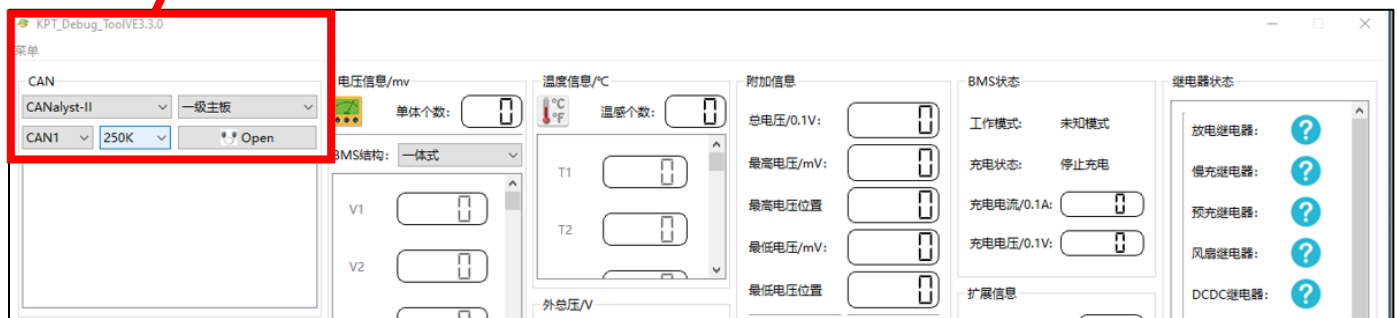
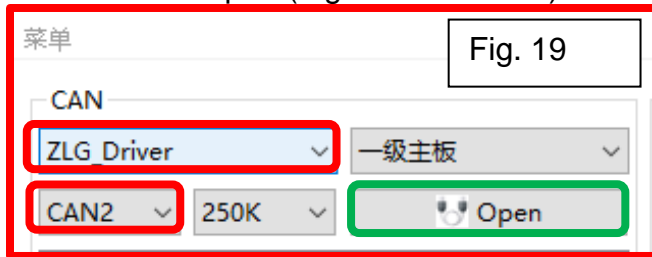
5. If you get a security error, click more info, then run anyway.



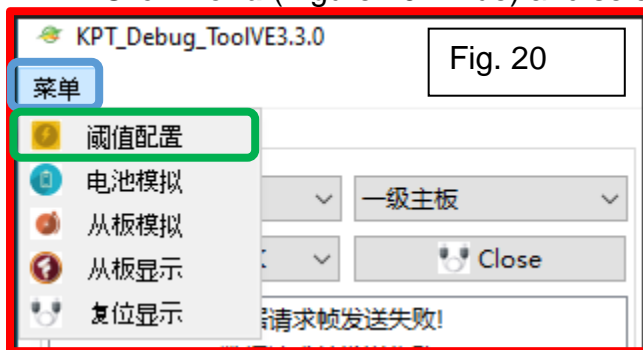


Run the KPT Debug Tool and change the settings to ZLG Driver, CAN2 (Figure 19 - Red)

6. Select Open (Figure 19 –Green)



7. Click **Menu** (Figure 20– Blue) and select **Threshold** (Figure 20 – Green).





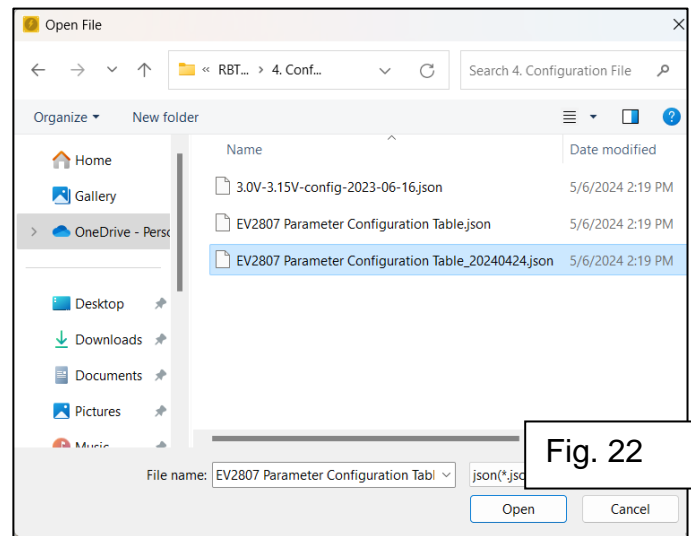
8. Click **Import** (Figure 21- Blue) to import a configuration file.



9. Open the configuration file folder and select EV2807 Parameter Configuration Table\_20240424.json file. (Figure 22)

10. Select Open.

11. At the “Succeed to import!” Message, select YES.



12. Click **Configuration** (Figure 23 - Green) to configure the threshold.  
13. At the “Config Success” Message, select YES.



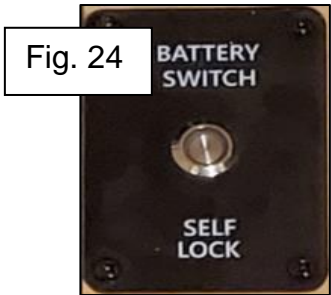
14. Close the KPT Debug Tool



## 5. Debug Tool Manual SOC% Calibration

At some point during the bootloader process, the state of charge (SOC) will automatically calibrate to 0% or 100% and will need to be manually set. This can be corrected through the KPT Debug Tool and will require disconnecting and reconnecting the USB Can Analyzer.

1. Reconnect the USB cable to reset the USBCAN Analyzer.
2. Go to the Renogy Battery Firmware Folder on the desktop screen and open. (Figure 24)



3. Turn on the lithium battery: Turn battery on with the self-locking switch and self-resetting switch. (Figure 25)

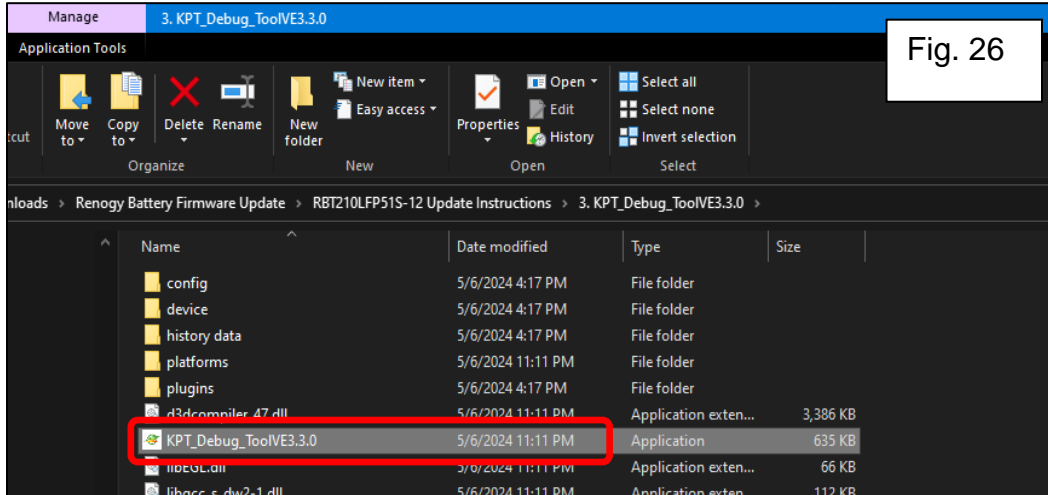
- D. Press and release the self-locking switch (typically installed behind an access panel near the lithium battery)
- E. Next press and hold the self-resetting switch (typically installed overhead cabinet near Firefly touchscreen) for approximately 5-10 seconds to turn on the battery.



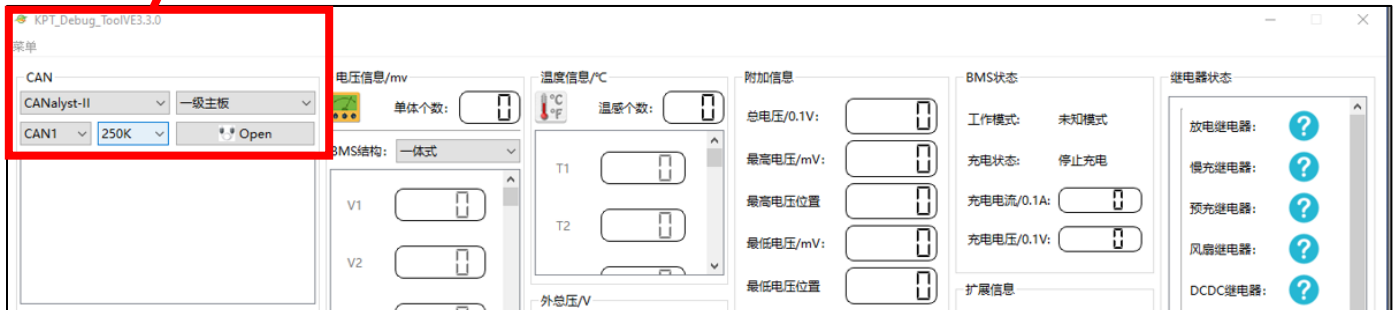
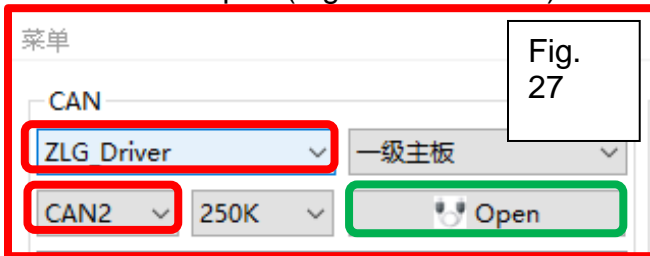
- F. To verify the system is ON, the Samkoon screen lights should be ON (PWR and RUN) and the COM light flashing.



4. Run the KPT\_Debug\_ToolVE3.3.0.exe-Shortcut (Figure 26)

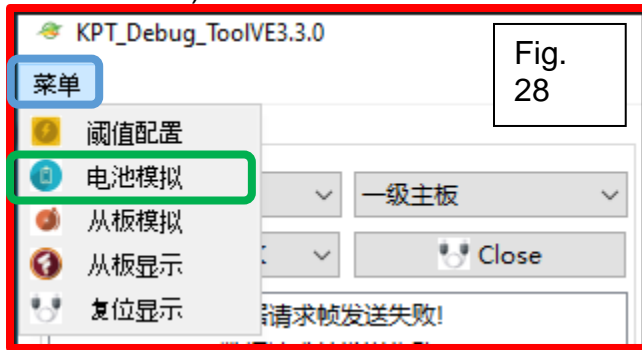


5. Run the KPT Debug Tool and change the settings to ZLG Driver, CAN2 (Figure 27 - Red)
6. If you get a security error, click more info.
7. Select Open (Figure 19 –Green)

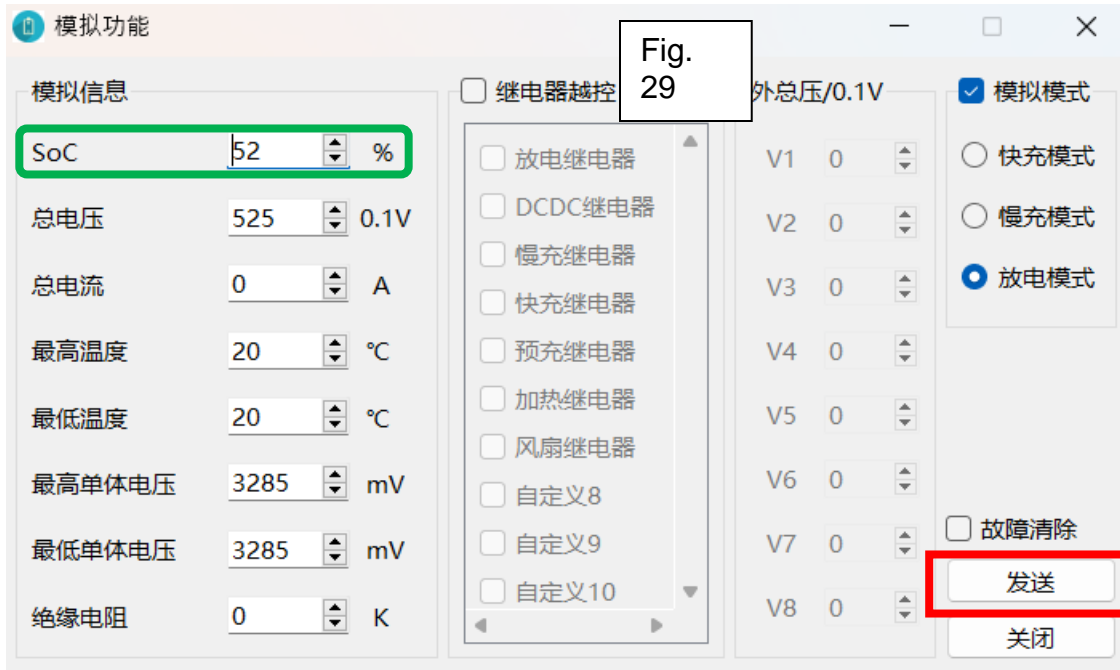




8. Click **Menu** (Figure 20– Blue) and select **Battery Simulation** (Figure 28 – Green).



9. Then a submenu will launch, where you will click the SOC line (Figure 29— Green) and manually type in the SOC percentage you recorded before the update. Once you type in the correct SOC%, you will press **Send** (Figure 29 – Red)



10. The Samkoon will now reflect the correct SOC%. If it does not, close the program altogether, disconnect the USB Can Analyzer and begin the **5. Debug Tool Manual SOC% Calibration** section again.

11. Verify the update through a battery restart.
  - a. Press and release the self-locking switch (typically installed behind an access panel near the lithium battery)
  - b. Next press and hold the self-resetting switch (typically installed overhead cabinet near Firefly touchscreen) for approximately 5-10 seconds to turn on the battery.
  - c. To verify the system is ON, the Samkoon screen lights should be ON (PWR and RUN) and the COM light flashing.





Update is complete when the SOC% reflects the initial SOC% before the update began as well as the new BMS Version showing **137.4.4 or higher** on the bottom right-hand side of the Samkoon monitor.

