

# Recall Campaign Bulletin



Mercedes-Benz

Campaign No. 2024030008, March 2024

TO: ALL MERCEDES-BENZ CENTERS

SUBJECT: **Various Models**  
**Model Year 2023 – 2024**

**Replace Fuse Box(es)**

Mercedes-Benz AG, the manufacturer of Mercedes-Benz vehicles, has determined that on certain MY 2023-2024 C-Class, CLE, E-Class, EQE, EQE SUV, EQS, EQS SUV, GLC, S-Class, and SL (206, 214, 223, 232, 236, 254, 294, 295, 296 and 297 platform) vehicles, certain 80A fuses which were installed might not meet production requirements. As a result, a contact interruption or an increased triggering resistance might occur. In this case, systems connected to the fuse might become inoperable. The vehicle might also lose propulsion without warning, and restraint functions or the instrument cluster might be impaired, which could increase the risk of a crash or injuries. In addition, a risk of fire cannot be ruled out. An authorized Mercedes-Benz dealer will replace the respective main fuse box(es) on the affected vehicles.

Prior to performing this Campaign:

- VMI must be checked before performing campaigns to verify that the campaign is required on a specific vehicle. Always check for any other open campaigns and perform accordingly.
- Please review the entire Campaign bulletin and follow the repair procedure exactly as described.

Approximately 31,848 vehicles are affected.

Order No. P-RC-2024030008

Recall Campaign Bulletin

Recall Campaign Bulletin

Recall Campaign Bulletin

Recall Campaign Bulletin

Recall Campaign Bulletin

## Replace Fuse Box(es)

### Work Procedure A

**i** For models 192, 206, 214, 223, 232, 236, and 254

1. Disconnect ground line of 12 V battery (**Figure 1**).

**Hm** Screw/nut, electric line to battery terminal of on-board electrical system battery: **6 Nm**.



**Figure 1**

2. Remove floor mat, remove trim (**Figure 2, A**) from A-pillar / passenger door sill panel, and fold back floor covering on right front footwell.

**i** **Step 2 is not required for model 232** - Only remove the molded part under the floor mat.



**Figure 2**

3. Unscrew nuts (**Figure 3, A**) of interior prefuse box cover and remove the cover.

**i** For model 232: Unscrew fuse box holder support (**Figure 4, A**) covering prefuse box (**Figure 4, B**), place to one side keeping electrical lines connected.

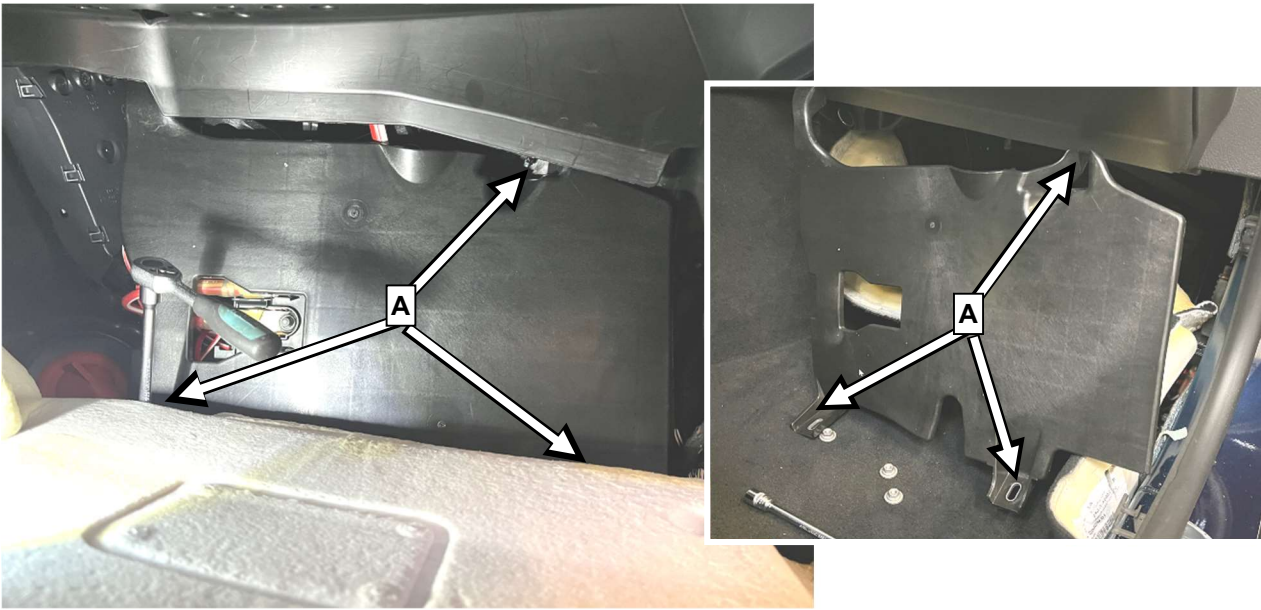


Figure 3, Interior prefuse box cover, shown on model 206

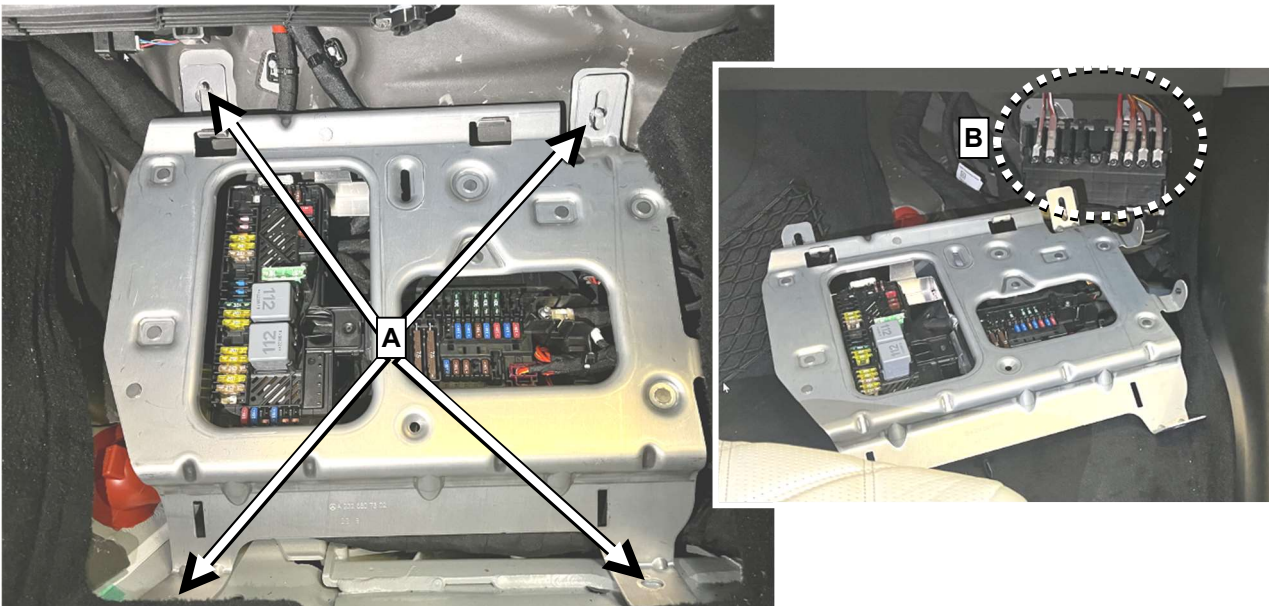


Figure 4, Support bracket (A), covering prefuse box (B), shown on model 232

4. Replace **interior** compartment prefuse box (**F150/2**).

**i** For basic data on **models 192 and 232**, see AR54.15-P-1350SLY.

**i** For basic data on **model 223**, see AR54.15-P-1350S.

**i** For basic data on **models 206, 214, 236, and 254**, see AR54.15-P-1350WT.

**i** **Mounting nuts must be reused.**

**Nm** **M6** nut, positive line to vehicle interior prefuse box: **8 Nm**.

**Nm** **M8** nut, positive line to vehicle interior prefuse box: **16 Nm**.

**i** Connections of the electrical lines are shape-coded to match the prefuse box and cannot be mixed up.



Figure 5

5. Re-connect ground line of 12 V battery.

6. Read out and erase fault memory.

## Replace Fuse Box(es)

### Work Procedure B

**i** For models 294, 295, 296, and 297; non-AMG models.

1. Disconnect ground line of 12 V battery.

**Nm** Screw/nut, electric line to battery terminal of on-board electrical system battery: **6 Nm**.

2. Remove trim on A-pillar / door sill panel.

3. Replace **interior** prefuse box (**F150/7**).

**i** For basic data on **models 294, 295, 296, and 297**, see AR54.15-P-1350EQS.

- Step 1 – Remove floor covering on front passenger side, see:
  - AR68.80-P-0008EQD for **294** and **296**
  - AR68.80-P-0008EQS for **295** and **297**

**i** To make it easier to fold back the floor covering, the trim (Figure 6, C) and the stowage tray (Figure 6, D) in front of the center console must be partially removed.

**i** Mounting nuts must be reused.

**Nm** M6 nut, positive line to vehicle interior prefuse box: **8 Nm**.

**Nm** M8 nut, positive line to vehicle interior prefuse box: **16 Nm**.

**i** Connections of the electrical lines are shape-coded to match the prefuse box and cannot be mixed up.

**i** Positive lines are secured with additional cable ties.

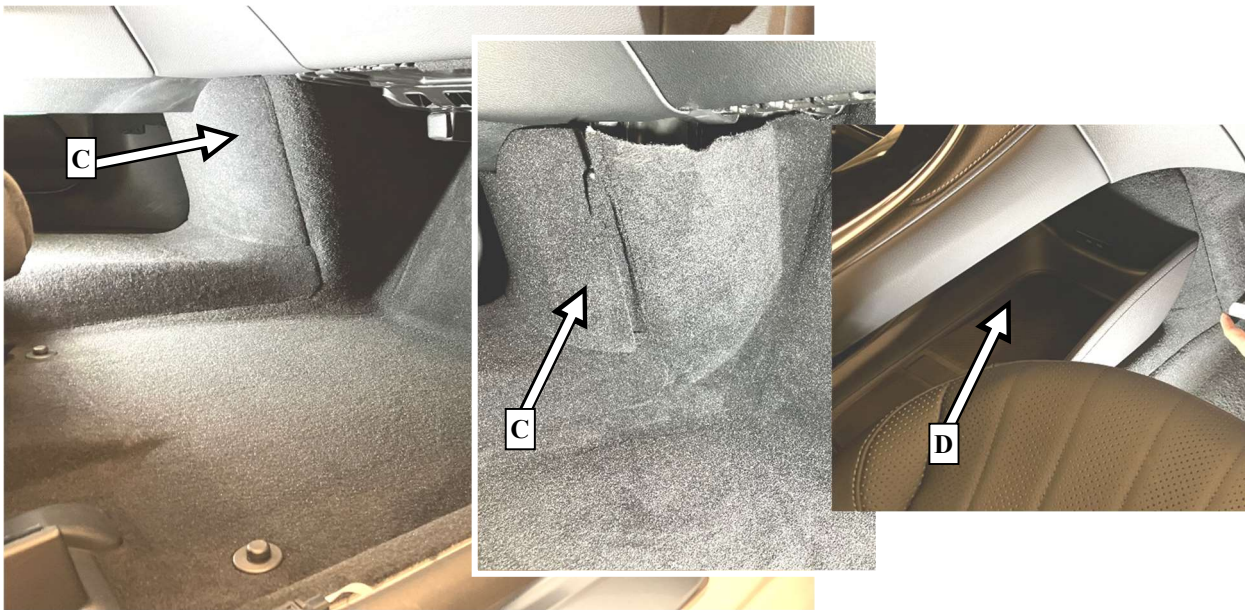


Figure 6

4. Connect ground line of 12 V battery.

5. Read out and erase fault memory.

## Replace Fuse Box(es)

### Work Procedure C

**⚠ WARNING – HV training required / HV power down must be performed by certified technician ⚠**

**i** For models 294, 295, 296, and 297; only AMG models.

**i** On AMG-EQ models, front prefuse box in the major assembly compartment is replaced in addition to the interior prefuse box.

1. Remove trim on A-pillar / door sill panel.

2. Replace interior prefuse box (F150/7).

**i** For basic data on models 294, 295, 296, and 297, see AR54.15-P-1350EQS.

- Step 1 – Remove floor covering on front passenger side, see:
  - AR68.80-P-0008EQD for 294 and 296
  - AR68.80-P-0008EQS for 295 and 297

**i** To make it easier to fold back the floor covering, the trim (Figure 6, C) and the stowage tray (Figure 6, D) in front of the center console must be partially removed (see Work Procedure B).

**i** Mounting nuts must be reused.

**Nm** M6 nut, positive line to vehicle interior prefuse box: 8 Nm.

**Nm** M8 nut, positive line to vehicle interior prefuse box: 16 Nm.

**i** Positive lines are shape-coded to match the prefuse box and cannot be mixed up.

**i** Positive lines are secured with additional cable ties.

3. Replace front prefuse box (F150/3).

**⚠** **i** For basic data on models 294, 295, 296, and 297, see AR54.15-P-1330EQS.



Figure 7, HV electrical connectors with protective covers (001 589 06 91 00)

**i** Pay close attention that High Voltage electrical connectors for DC/DC converter are clean and free from coolant

**i** Recommend performing **Step 4.2 prior to 4.1** of AR54.15-P-1330EQS to aid in removal of DC/DC converter.

NOTE: For AR54.15-P-1330EQS **Step 5**; disconnect electrical connections first, then unclip from bracket (**Figure 8**).



**Figure 8**

4. Re-connect ground line of 12 V battery.
5. Read out and erase fault memory.

### Primary Parts Information

Qty.	Part Name	Part Number
1	Interior prefuse box	*
1	Front major assembly compartment prefuse box <b>ONLY 294-AMG, 295-AMG, 296-AMG, 297-AMG</b>	*
As required	Cable tie Only required for models <b>294, 295, 296, 297</b>	A 000 995 90 06

\* Prefuse boxes must be determined according to the vehicle identification number via XENTRY Portal Parts Information.

\* The required **interior** prefuse box can be found in the XENTRY Parts Information under **main group 54 electrical equipment and instruments** in **picture chart 058 – control units / fuse boxes / relays in the vehicle interior** and **picture number (560 – models 206, 223, 232, 254), (400 – model 214), (30 – model 236), (550 – model 294), (530 – models 295, 296, 297).**

\* The required **front** prefuse box can be found in XENTRY Parts Information under **main group 54 electrical equipment and instruments** in **picture chart 054 – control units / fuse boxes / relays in engine compartment – number 280.**

Old parts must be scrapped on site and **must not be reused**.

**i** Small parts such as screws, lock nuts, sealing rings, cable ties, fluids, sealant, etc. are not listed in the parts list. The required small parts are taken into account in the budgeting.

**i** **Note:** The following allowable labor operation should be used when submitting a warranty claim for this repair:

### Warranty Information

Damage Code	Operation Number	Description	Labor Time (hrs.)
82 970 11	12-2055	Replace interior prefuse box Models: <b>192</b> and <b>232</b> <b>Includes:</b> Delete fault memory	1.0
	12-2055	Replace interior prefuse box Models: <b>206, 214, 223, 236, and 254</b> <b>Includes:</b> Delete fault memory	0.7
	12-2055	Replace interior prefuse box Models: <b>294, 295, 296, 297 (non-AMG)</b> <b>Includes:</b> Delete fault memory	0.8
	12-2056	Replace interior and front major assembly compartment prefuse boxes Models: <b>294-AMG, 295-AMG, 296-AMG, 297-AMG</b> <b>Includes:</b> Delete fault memory	ZM

**i** **Note:** Always check Xentry Operation Time (XOT) for the current OP-Code times. Labor times are subject to change and updates may not be reflected in this document.