

RECALL 24V103 / 2024-086 REMEDY INSTRUCTIONS



Make(s): FR3 & GEORGETOWN
Model(s): ALL MODELS
Model Year(s): 2019 - 2024

Concern:

The two mounting ("L") brackets which the LPG tank is bolted to may fracture within the radius bend, and it is possible there is a lack of weld connecting the L Bracket to the chassis.

Repair Code: RC-706-09-00-004517
Allotted Time: 4.0
Inspection Code: N/A
Allotted Time: N/A

Photo(s) Required: YES, POST REMEDY
Prior Authorization Required: YES
Part(s) Kit Number: F100538935
Part(s) Return: YES, SEE STEP 10

Turn off LP Gas at LPG Tank(s). Place vehicle in (P) Park and engage the Parking Brake. Disconnect the vehicles' battery Positive and Negative, disconnect any House battery(s) Positive and Negative, if equipped with a generator ensure it is off and lastly, ensure the vehicle is disconnected from shore power. Block any tires/wheels to prevent the vehicle from rolling. Failure to do so may result in electrocution, fire or other personal injury, property damage and/or death.

STEP 1: TURN OFF LP VALVE AT THE TANK;

STEP 2: BURN OFF THE LP IN THE LINES VIA A STOVE BURNER;

STEP 3: ACCESS THE LP TANK COMPARTMENT;

- ENSURE TO TURN OFF LP TANK COMPLETELY;

STEP 4: REMOVE THE REGULATOR COVER AND UNHOOK LP LINE FROM THE LP TANK;

- REMOVE THE LP GAUGE WIRING (POPS OFF);
- DO NOT UNSCREW THE GAUGE HOUSING;
- REMOVE THE ZIP-TIE FROM THE LINE SECURING IT TO THE BRACKET;
 - IF NEEDED REMOVE THE STRAP ON THE COMPARTMENT DOOR TO ALLOW IT TO OPEN FURTHER. BE SURE TO PROTECT THE DOOR WITH CARDBOARD TO PREVENT DAMAGE TO THE PAINT;

STEP 5: USE A FLOOR JACK (OR A LIFT) AND A CRADLE TO SUPPORT THE LP TANK;

- REMOVE (4) BOLTS, WASHERS AND NUTS SECURING THE LP TANK TO THE RV AND DISCARD (WITH PROVIDED HARDWARE);

STEP 6: IT MAY BE NECESSARY RAISE THE DRIVER'S SIDE OF THE RV TO OBTAIN CLEARANCE TO REMOVE THE LP TANK;

- PRO TIP: BUILD RAMPS FROM STACKED WOOD TO SIMPLIFY RAISING THE UNIT;

STEP 7: REMOVE THE LP TANK FROM THE BUILDING AND SECURE IT IN ITS TEMPORARY LOCATION;

STEP 8: TAPE OFF THE LP LINE SO DEBRIS DOESN'T GET INTO THE END OF THE HOSE WHILE CUTTING AND GRINDING IN THE LATER STEPS;

STEP 9: ON MODELS WITH THE E-CHAIN STORAGE BOX IN THE LP COMPARTMENT, YOU WILL NEED TO FREE IT UP SO IT CAN BE PIVOTED OUT OF THE WAY;

- NOTCHING THE BACK SIDE TO ALLOW THE LINES TO BE REMOVED IS SUFFICIENT AS THE BOX CAN BE SWUNG OUT OF THE WAY WITHOUT REMOVING THE LINES CLOSEST TO THE EXTERIOR OF THE UNIT;

STEP 10: SECURE ALL LINES, CHECK FOR TOOL CLEARANCE AND CUT OFF THE LOWER MOUNTING PORTION OF LP BRACKET;

- USING A SAWZALL SEEMS TO WORK THE BEST IN THIS CASE (FIGURE 1);
- **SET CUT OFF PART(S) OF THE BRACKET ASIDE – THIS NEEDS TO BE RETURNED;**

STEP 11: GRIND AWAY ANY BURRS OR PROTRUSIONS TO MAKE THE REMAINING PART OF THE BRACKET FLAT SO THE NEW BRACKETS CAN MAKE COMPLETE CONTACT (FIGURE 2);

STEP 12: DEPENDING ON THE MODEL YOU MAY BE ABLE TO DRILL FROM THE EXPOSED SIDE THROUGH THE EXISTING HOLES OR YOU CAN USE THE NEW BRACKET AS A TEMPLATE TO MARK OUT THE TWO OUTER HOLES AND DRILL FROM THE BACK SIDE;

- YOU WILL NEED TO DRILL THROUGH BOTH SIDES OF THE TUBING (FIGURE 3);
- DEPENDING ON THE MODEL YOU MAY NEED TO DRILL THROUGH THE COMPARTMENT WALL AS THERE IS NO ROOM FOR THE BOLTS AND NUTS WITHOUT DOING SO (FIGURE 6);
- IT IS BEST TO DRILL THE HOLES IN STEPS DUE TO THEIR SIZE;
- BEGIN WITH A 3/16 PILOT HOLE, THEN A 3/8 BIT AND FINISH WITH A 1/2 INCH DRILL BIT;

STEP 13: PAINT THE AREA WHERE THE CUTTING AND GRINDING WERE DONE TO PREVENT FUTURE RUST (FIGURE 4);

RECALL 24V103 / 2024-086 REMEDY INSTRUCTIONS



Make(s): FR3 & GEORGETOWN
Model(s): ALL MODELS
Model Year(s): 2019 - 2024

Concern:

The two mounting ("L") brackets which the LPG tank is bolted to may fracture within the radius bend, and it is possible there is a lack of weld connecting the L Bracket to the chassis.

Repair Code: RC-706-09-00-004517

Allotted Time: 4.0

Inspection Code: N/A

Allotted Time: N/A

Photo(s) Required: YES, POST REMEDY

Prior Authorization Required: YES

Part(s) Kit Number: F100538935

Part(s) Return: YES, SEE STEP 10

STEP 14: INSTALL THE NEW BRACKETS WITH THE PROVIDED NUTS AND BOLTS (FIGURE 5);

- TORQUE THEM TO 80-FOOT POUNDS OF TORQUE;
- THE BRACKETS SHOULD BE INSTALLED WITH THE GUSSETS ON THE TOP WITH THE FLAT SIDE DOWN;

STEP 15: TO BEGIN THE REINSTALLATION OF THE TANK, PULL THE LP HOSE TO THE FRONT OF THE COMPARTMENT;

STEP 16: IF NECESSARY, REINSTALL THE E-CHAIN BOX;

STEP 17: REINSTALL THE LP TANK USING THE REPLACEMENT BOLTS, WASHER & NUTS – TORQUE NUT (TO 55 FT. LBS.) WITH THE ASSISTANCE OF A FLOOR JACK (OR LIFT)

HARDWARE IS LISTED IN THE ORDER OF INSTALLATION:

GRADE 5 HARDWARE

1 = ½ X 13 X 2-INCH BOLT

1 = ½ INCH FLAT WASHER

1 = ½ INCH EXTERNAL TOOTH LOCK WASHER

BRACKET ASSEMBLY

1 = ½ INCH FLAT WASHER

1 = SERRATED FLANGE LOCK NUT

TORQUE SPEC IS 55 FOOT POUNDS.

STEP 18: HOOK UP THE LP LINE AND REGULATOR COVER;

- ZIP-TIE THE HOSE AS NECESSARY TO SECURE IT;

STEP 19: IF YOU REMOVED THE STRAP ON THE COMPARTMENT DOOR REATTACH IT;

STEP 20: PERFORM AN LP DROP TEST TO INSURE THERE ARE NO LEAKS.

STEP 21: CLAIM THE REPAIR CODE.

FIGURE 1



FIGURE 2



FIGURE 3



FIGURE 4



FIGURE 5

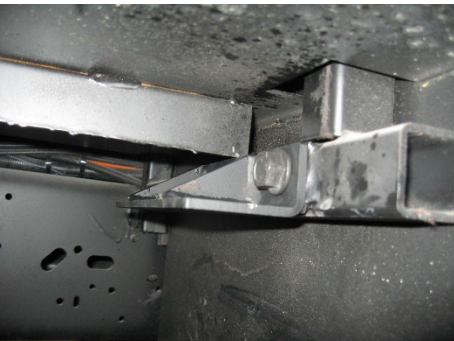


FIGURE 6

