

## Recall Inspection and Repair Instructions

**NHTSA Recall # 24V-049**

**Tiffin Motorhomes Recall # TIF-136**

**Models Involved:** 2023 – 2024 Convoy motorhomes and 2023 – 2024 Tiffin GH1 motorhomes built between March 23, 2023 and December 6, 2023.

**Purpose:** To provide instructions on how to replace the aluminum solar panel brackets with stainless steel brackets.

### **Tools Needed:**

Phillips Head Screwdriver

¾ in wrench

(2) 7/16 in wrenches

Cable Tie Cutters

### **Parts Needed:**

4 of 5156722, stainless steel solar brackets

3 Cable Ties, from shop supplies

**If damaged or missing :**

1 of 5134924, solar panel

2 of 5113954, solar panel cable

### **FLAT RATE CODES AND TIMES**

*No additional authorization is required for work completed at the flat rate times stated on the work instructions.*

Please list **“RECALL136”** as the authorization on the claim for payment.

*When filing the warranty claim for payment, please use the following flat rate codes and times.*

**TF9880RC01 or CV9880RC01, for 1 hour**

Note for parts: Shop supplies may be needed (cable ties, washers, etc) and can be billed back as materials for the recall.

### **INSPECTION PROCEDURES:**

1. Verify which brackets are installed on the motorhome. If they are the updated brackets made from stainless steel, please verify the hardware used to secure the solar panel is correct, if the washers or bolts are incorrectly sized, please update the hardware as needed. See figures 1A, 1B, 1C & 1D below.

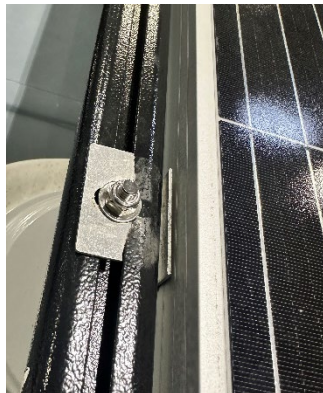


Figure 1A, recalled aluminum bracket.



Figure 1B, recalled aluminum bracket with stress fractures & incorrect washer.



Figure 1C, updated stainless steel bracket, washer too large for nut.

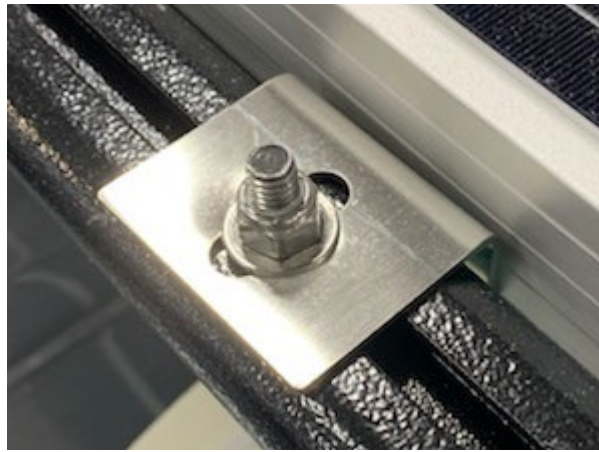


Figure 1D, updated stainless steel bracket, correct washer.

## **REPAIR PROCEDURE**

1. Turn main battery disconnect "OFF". The disconnect is located at the rear of the coach on the driver's side. See figures 2A & 2B below.



Figure 2A

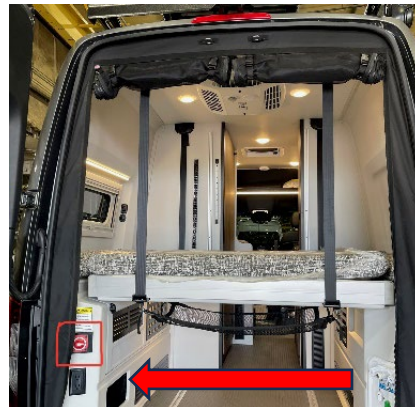


Figure 2B

2. Navigate to the roof of the van. Cut the 3 cable ties securing the solar panel cables to the roof rack observed underneath the panel. See figure 3A below.



Figure 3A

3. Disconnect the two connectors on the wires from the solar panel. See figure 4A below.



Figure 4A

4. Remove the (4) ½” locking nuts holding the solar panel to the roof rack. Remove the panel and transport to a more convenient workspace if preferred.
5. Remove the (4) aluminum solar panel brackets using (2) 7/16” wrenches and a Phillips head screwdriver. See Figure 5A below.

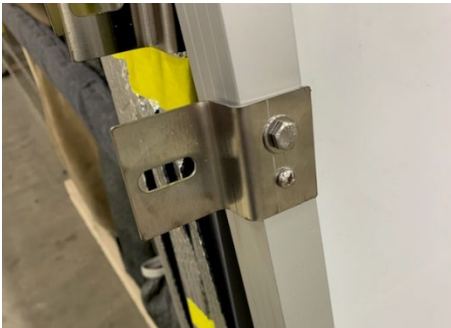


Figure 5A

6. Install new stainless steel solar panel brackets to the solar panel. Reattach the solar panel into the same location on the roof rack where the previous brackets were mounted. See Figure 6A



Figure 6A

7. Reconnect the solar panel MC4 connectors to the jumper harness that connects the panel to the docking plate. See Figures 7A & 7B below.



Figure 7A, MC4 Connectors



Figure 7B, Docking Plate

8. Reinstall new cable ties in the same location as the ones that were removed.



9. Return the disconnect switch to the "ON" position and resume normal operation of the vehicle.