

Recall Inspection and Repair Instructions

NHTSA Recall # 24V-036

Transport Canada Recall # 2024-024

Tiffin Motorhomes Recall # TIF-135

Models Involved: 2022 Allegro Bus Motorhomes, 2022 Phaeton Motorhomes, 2022 Allegro RED 360 Motorhomes, and 2022 Zephyr motorhomes built between January 3, 2022, and April 28, 2022.

Purpose: To provide instructions on how to inspect the driver's seat pedestal to ensure a weld is present and if no weld is present to replace the driver's seat pedestal with a new pedestal.

Tools Needed:

Torque wrench
¾ in wrench
1/2 in wrench

Parts Needed:

Villa Part Number 400029 Seat Pedestal

FLAT RATE CODES AND TIMES

No additional authorization is required for work completed at the flat rate times stated on the work instructions. Please list "RECALL135" as the authorization on the claim for payment.

When filing the warranty claim for payment, please use the following flat rate codes and times.

BU9879RC01, PH9879RC01, RD9879RC01 or ZY9879RC01 for 0.10 HRS, Inspection, no replacement needed.

BU987KRC01, PH987KRC01, RD987KRC01, or ZY987KRC01 for 1.0 HRS, **authorization to replace the seat base is required from Villa International.**

INSPECTION PROCEDURES:

1. Inspect the driver's side seat pedestal to verify the weld is complete around the base of the seat pedestal. See Figure 1 and 2 below to help determine if the weld is correct or not.



Figure 1

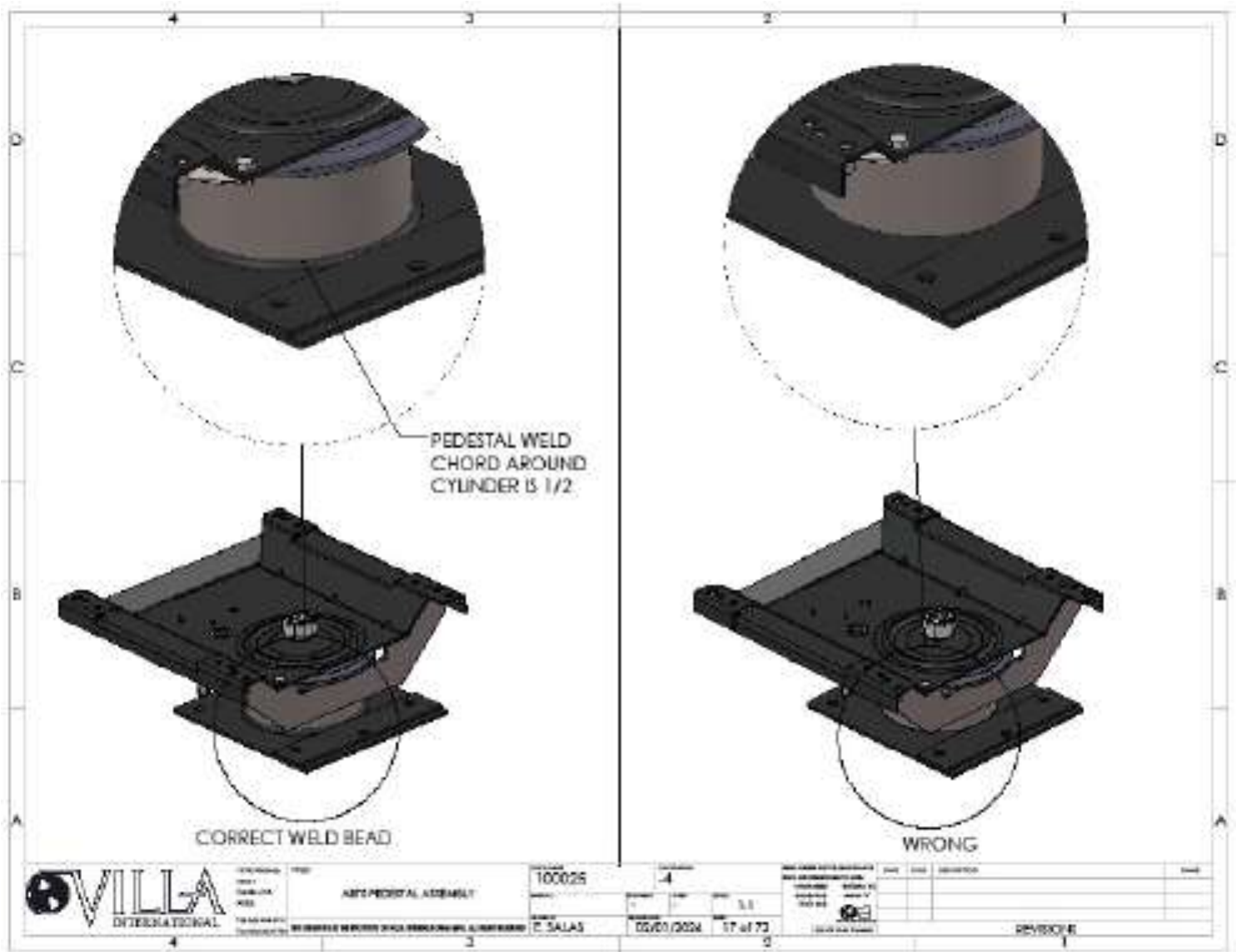


Figure 2

2. If the weld is complete around the entire pedestal base, there is no further work to be done.
3. If the weld is missing, please take a picture and email to jim@villainternational.com for authorization to replace the seat base and to order a new part.

REPAIR PROCEDURE

1. Raise the seat full up and then remove the zip tie securing the electrical harness and unplug the connection from the chair to the chassis power. See Figure 3 & 4.

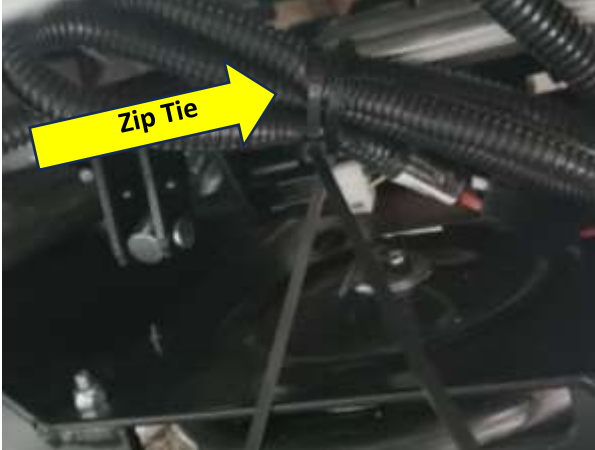


Figure 3



Figure 4

2. Disconnect the swivel cable from the seat pedestal. See Figure 5



Figure 5

3. Remove the 4 nuts securing the pedestal to the floor anchor bolts and carefully remove the chair from the floor anchors.
4. Unfasten and remove the 6 bolts that attach the pedestal to the driver's seat base. The electrical harness may need to be reconnected to power the seat forward and backward to access the bolts securing the pedestal to the base of the seat. Then slide the pedestal rearward from the seatbelt J brackets.
5. Install the new pedestal to the base of the driver's seat and tighten the bolts. Torque the six 5/16 grade 5 bolts to between 13-16 ft lbs in a criss-cross sequence.
6. Reinstall the seat pedestal to the floor and tighten the bolts. Torque the nuts securing the driver's seat to the floor bolts to 60 ft lbs.