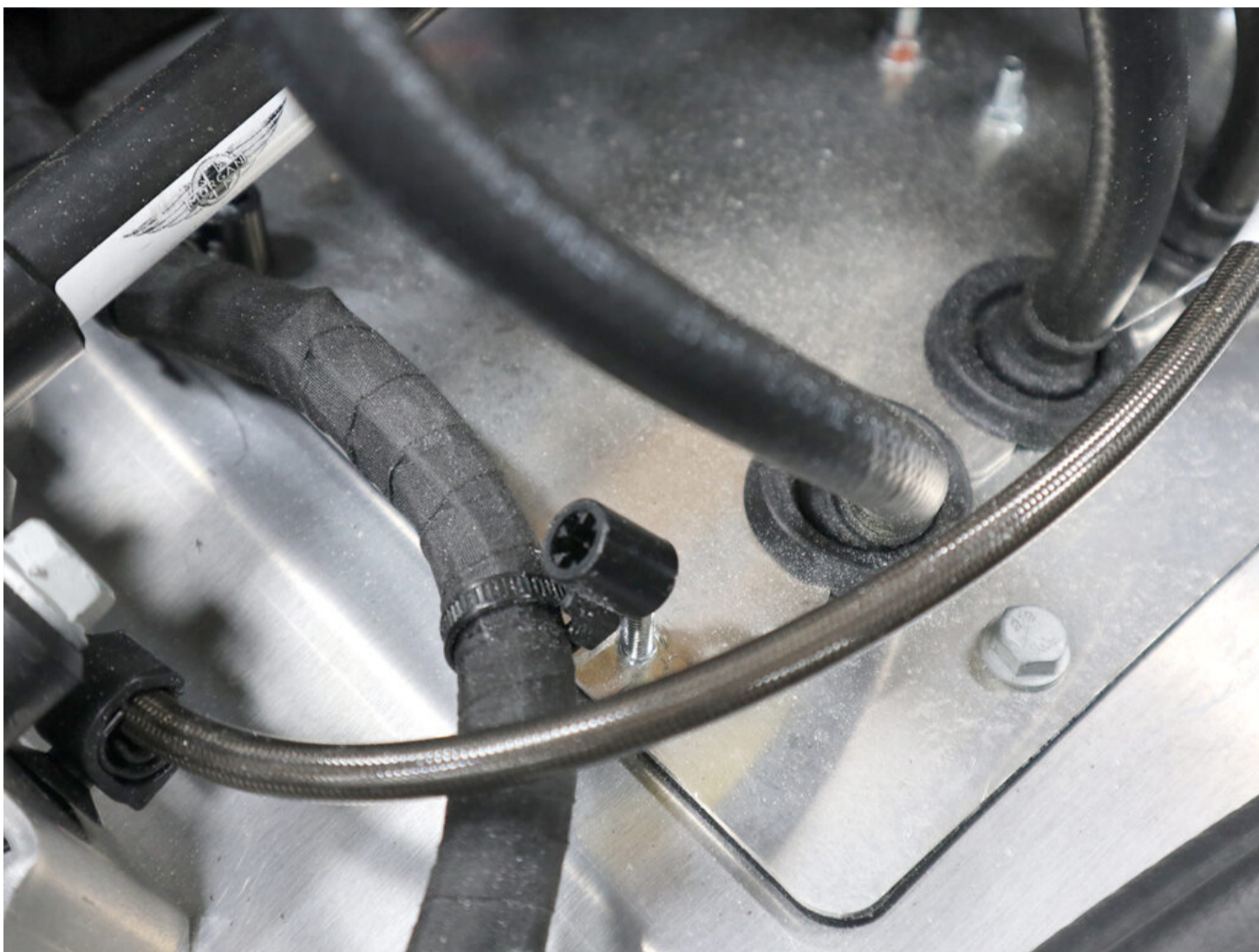
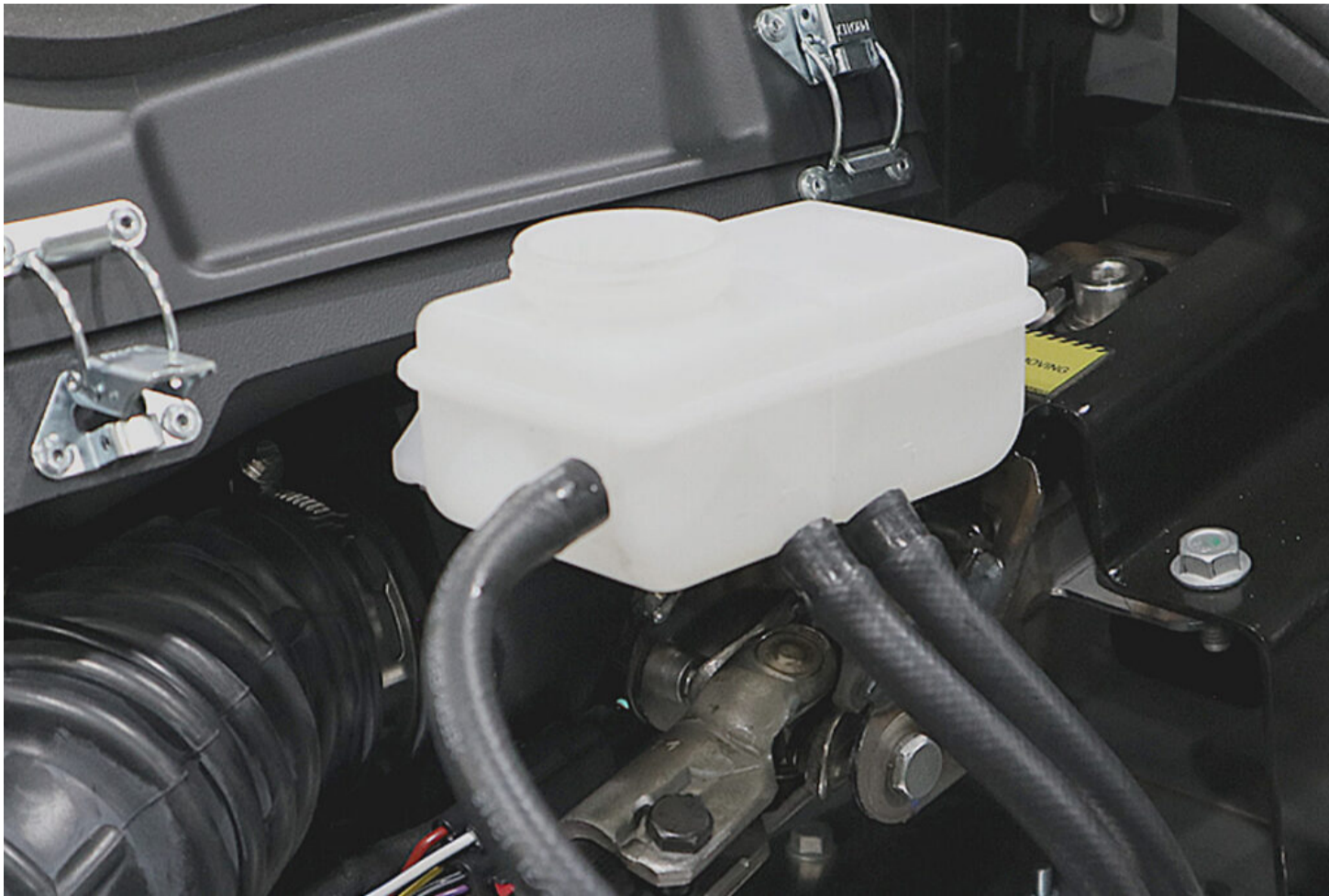


- Use a 10mm socket and ratchet to refit the accessible pedal box closing plate bolts. Tighten all bolts to **10Nm**.
- Refit the brake fluid reservoir to the vehicle.



- Refit the cable tie push fit clips (x2) to secure the wiring harness to the bulkhead closing plate.

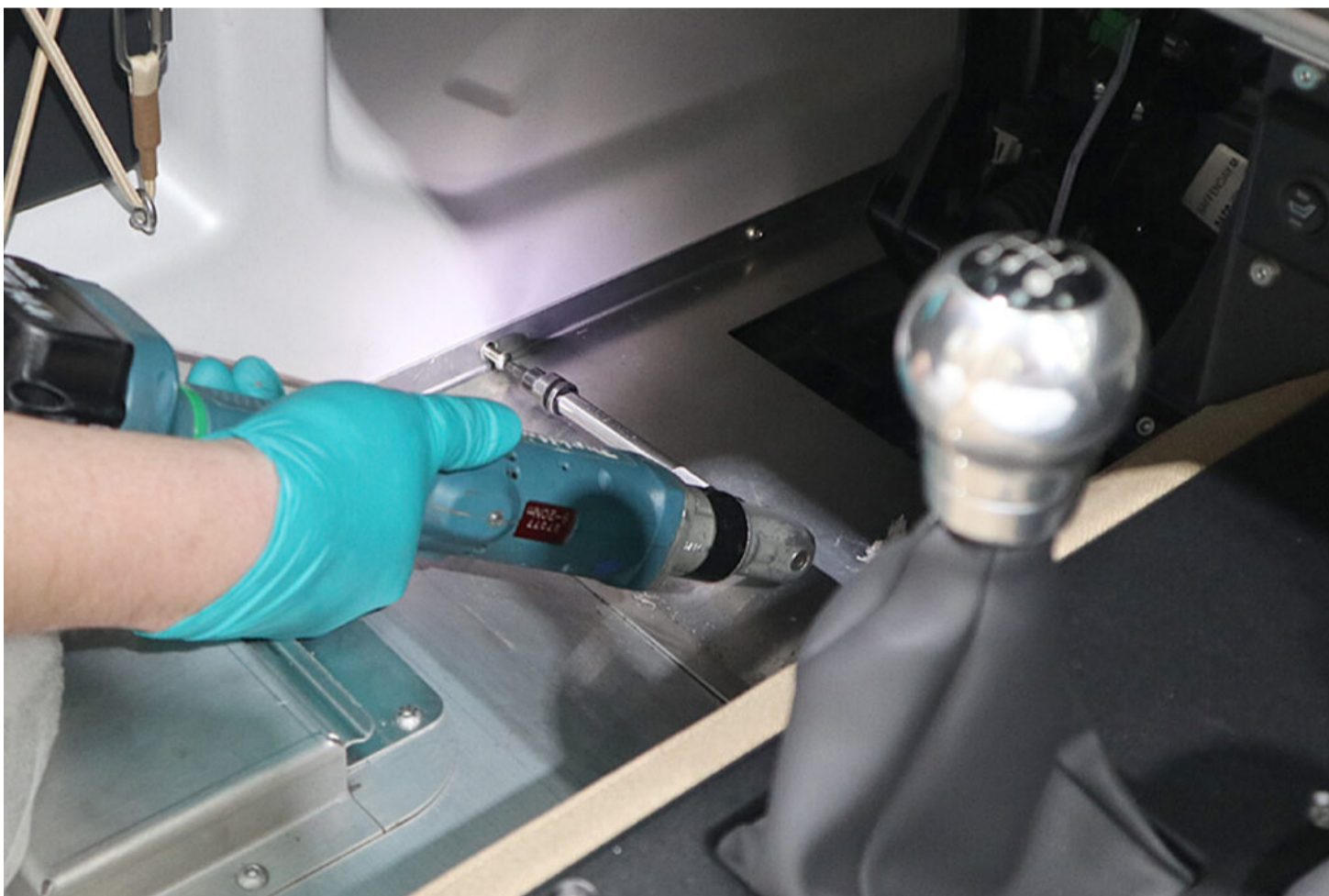


- Refit the clutch master cylinder and brake master cylinder feed pipes to the brake fluid reservoir.

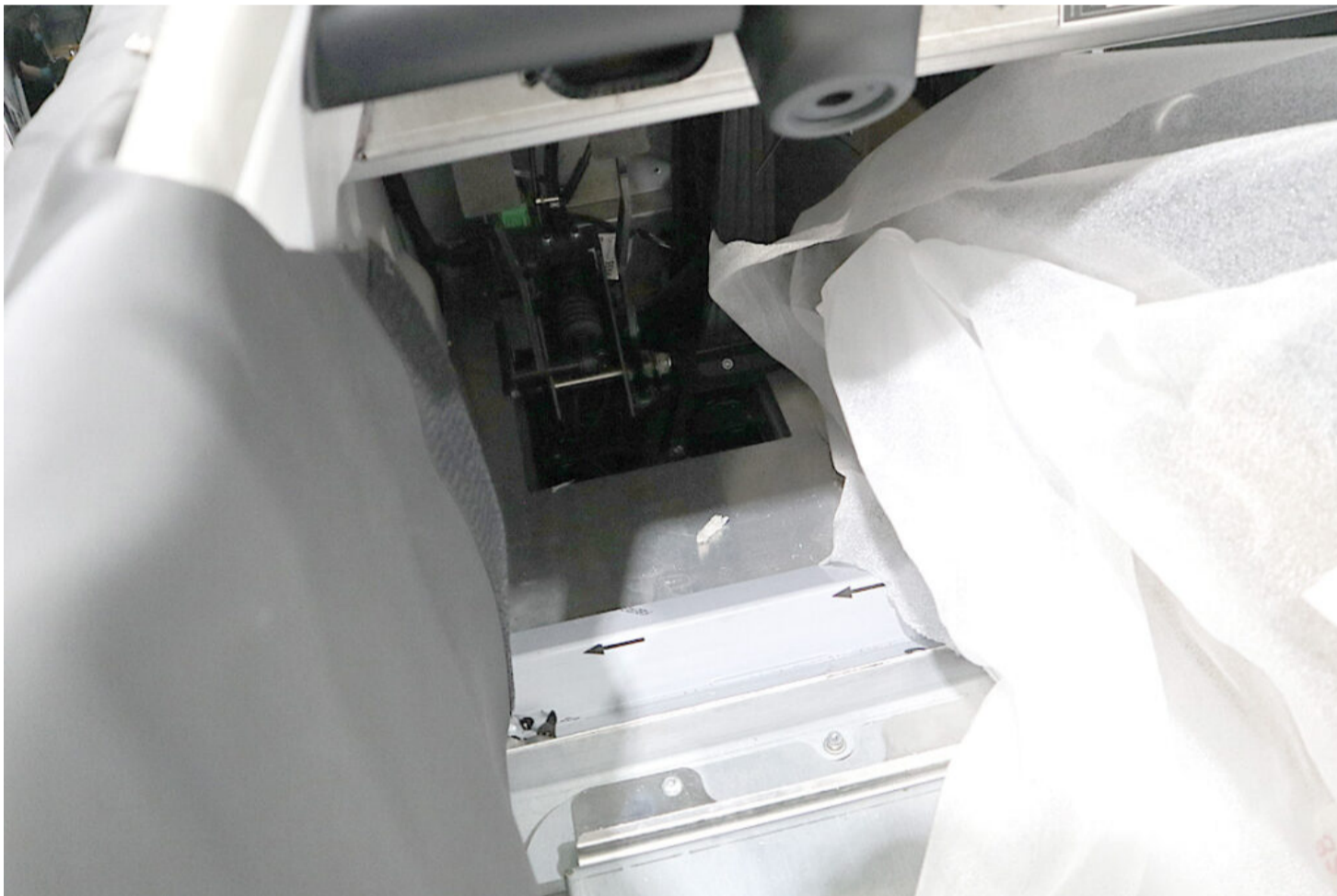
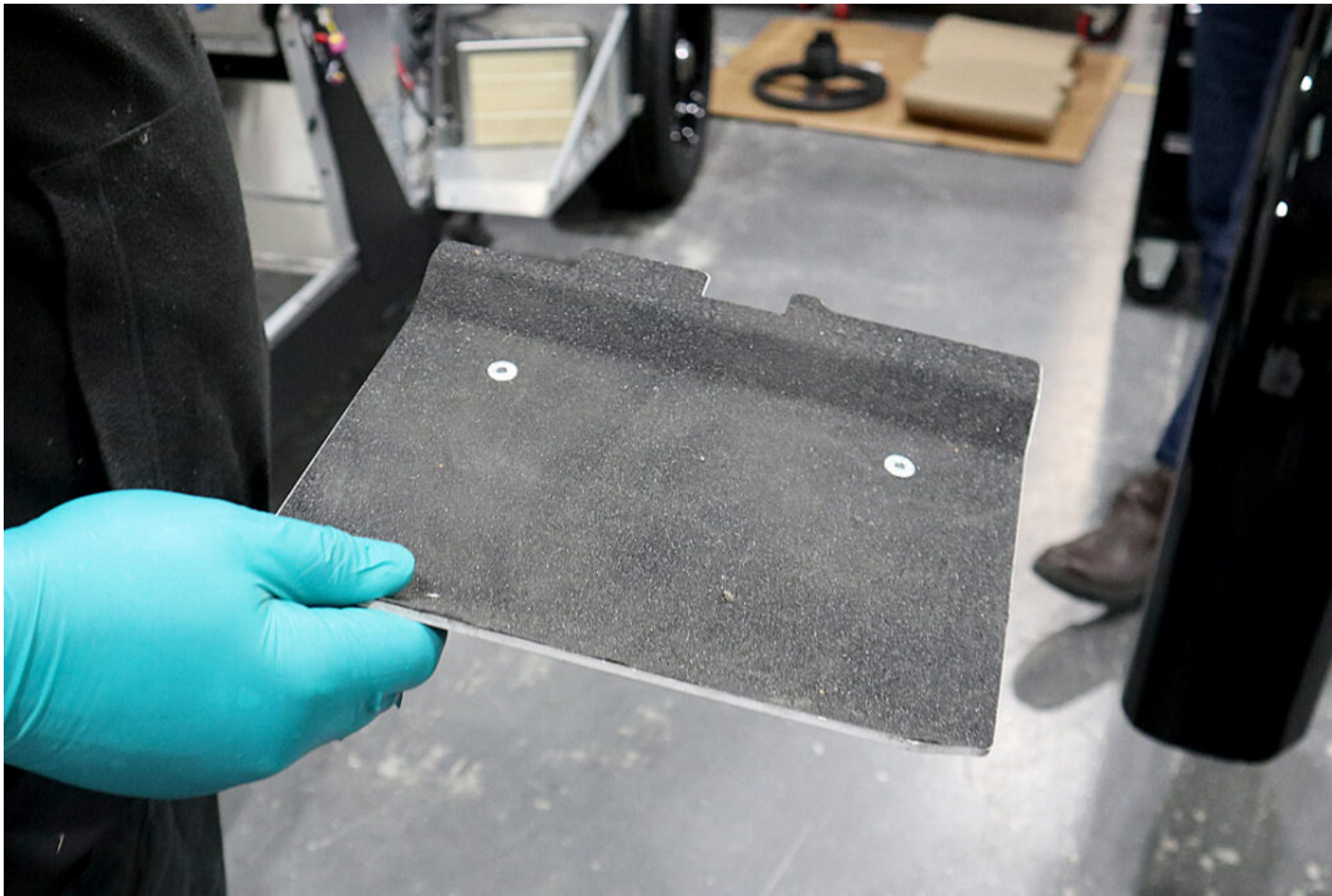


Ensure clutch feed pipe is fitted to the front upper outlet.

- Tighten up the hose clamps on the brake fluid reservoir for master cylinder and clutch feed lines using a 7mm socket and ratchet or a flat head screwdriver.



- Refit the accessible bolts retaining the footwell base plate. Tighten to **10Nm**.



- Refit the heel plate in the footwell and secure the retaining bolts with a 4mm hex key.



Refit the steering wheel and align to the marks previously made, to ensure the steering wheel alignment remains correct.



Please ensure the Serrated Washer is replaced prior to refitting the steering wheel bolt – Part Number Y191073



- Torque the steering wheel bolt to **42Nm** using a 19mm socket and torque wrench.
- Apply a paint mark across the centre of the bolt and on both sides of the steering wheel.
- Refit the steering wheel rubber centre boss.



- Refit the front seat base to the driver's side and refit the (x2) bolts with a 4mm hex key.



- Refit the heated seat connector (if fitted) and refit the seat base to the vehicle.



- Refill the brake reservoir with brake fluid.