


RECALL 24V005 REMEDY INSTRUCTIONS – CERTAIN Li3 MODELS ONLY

	Make(s): GALLERIA Model(s): MANY, SEE BELOW Model Year(s): 2020 - 2024	Repair Code: RC-093-09-00-004514 Allotted Time: 1.50 HRS. Inspection Code: N/A Allotted Time: N/A
	Concern: In the event the battery boost wire shorts, or fails, it may shut down or damage the power steering of the vehicle. This condition may lead to a crash.	Photo(s) Required: YES, POST REMEDY Prior Authorization Required: YES Part(s) Kit Number: F100503421 Part(s) Return: N/A

Turn off LP Gas at LPG Tank(s). Disconnect the vehicles' battery Positive and Negative, disconnect any House battery(s) Positive and Negative, if equipped with a generator ensure it is off and lastly, ensure the vehicle is disconnected from shore power. Block any tires/wheels to prevent the vehicle from rolling. Failure to do so may result in electrocution, fire or other personal injury, property damage and/or death.

CERTAIN 2022 – 2024 GALLERIA: GAB24AM, GAB24FLM, GAB24QM & GAB24TM
CERTAIN 2024 – GALLERIA: GAB24AMAWD, GAB24FLMAWD, GAB24QMAWD & GAB24TMAWD

2022 THROUGH 2024 MODEL YEAR - REMEDY PROCEDURE

LI3 ONLY - ACR AND ACR SOLENOID REMOVAL PROCEDURE

PARTS NEEDED: BELL CAPS, HEAT SHRINK, P-CLAMPS, ELECTRICAL TAPE, ZIP TIES & LABELS

TOOLS NEEDED: SCREW GUN, WIRE STRIPPERS AND CRIMPERS, HEAT GUN, 9/16" AND 11/16" SOCKETS

STEP 1: LOCATE AND ACCESS ACR IN MAIN ELECTRICAL COMPARTMENT (FIGURE 1);

STEP 2: REMOVE ANY ZIP TIES RESTRICTING REMOVAL OF ACR OR ACR SOLENOID;

STEP 3: USE A 11/16" SOCKET AND A 9/16" SOCKET TO REMOVE THE RED 2 AWG CABLE ON POWER POST CONNECTED TO THE ACR SOLENOID (FIGURE 2);

STEP 4: USING 9/16" SOCKET REMOVE RED 2 AWG CHASSIS BATTERY CABLE FROM ACR SOLENOID;

4A. APPLY HEAT SHRINK TO END OF CABLE USING HEAT GUN (FIGURE 3);

4B. LABEL CABLE WITH DO NOT USE TAG AND MOUNT TO PANEL USING P-CLAMP OR ZIP TIE (FIGURE 4);

STEP 5: REMOVE IN-LINE FUSE ON SOLENOID AND RELOCATE TO POWER POST. TORQUE POWER POST TO 140 IN.LBS. (FIGURE 5);

STEP 6: CUT / DISCONNECT ACR *YELLOW* 18 AWG WIRE FROM *RED* 16 AWG AND *BROWN* 16 AWG WIRES - (RECONNECT RED AND BROWN);

6A. CUT / DISCONNECT ACR *PURPLE* 18 AWG WIRE FROM *GREY* 16 AWG WIRE - (CAP OFF GREY WIRE);

6B. CUT / DISCONNECT ACR *BLACK* 18 AWG WIRE FROM *WHITE* 16 AWG AND *BLACK* 18 AWG WIRES. (RECONNECT *WHITE* AND *BLACK* WIRES);

STEP 7: DISMOUNT ACR AND ACR SOLENOID AND REMOVE FROM PANEL (FIGURE 6);

STEP 8: USING ELECTRICAL TAPE AND/OR ZIP TIES RESECURE ANY LOOSE WIRES.

FIGURES/PHOTOS ON NEXT PAGE.

RECALL 24V005 REMEDY INSTRUCTIONS – CERTAIN Li3 MODELS ONLY



Make(s): GALLERIA
 Model(s): MANY, SEE BELOW
 Model Year(s): 2020 - 2024

Concern:
 In the event the battery boost wire shorts, or fails, it may shut down or damage the power steering of the vehicle. This condition may lead to a crash.

Repair Code: RC-093-09-00-004514
 Allotted Time: 1.50 HRS.
 Inspection Code: N/A
 Allotted Time: N/A

Photo(s) Required: YES, POST REMEDY
 Prior Authorization Required: YES
 Part(s) Kit Number: F100503421
 Part(s) Return: N/A

FIGURE 1

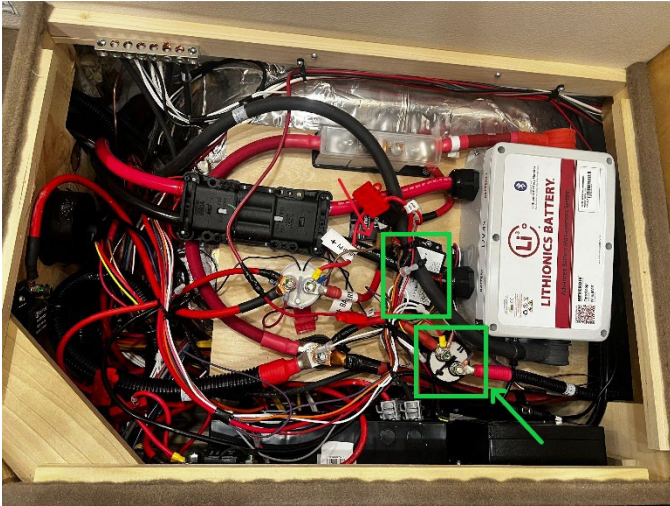


FIGURE 2

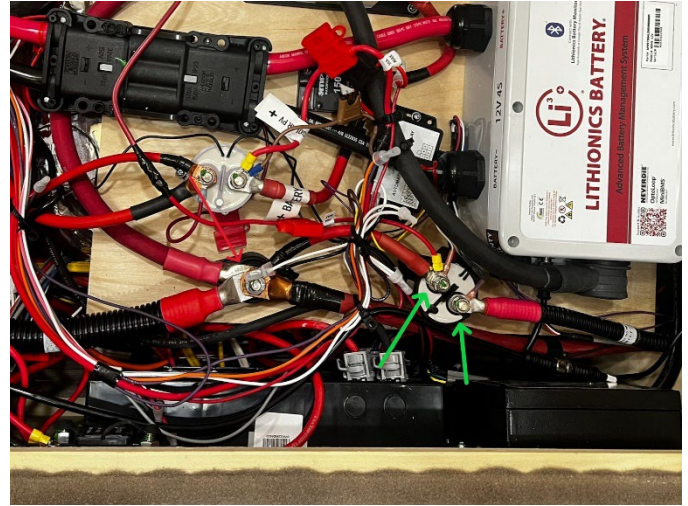


FIGURE 3

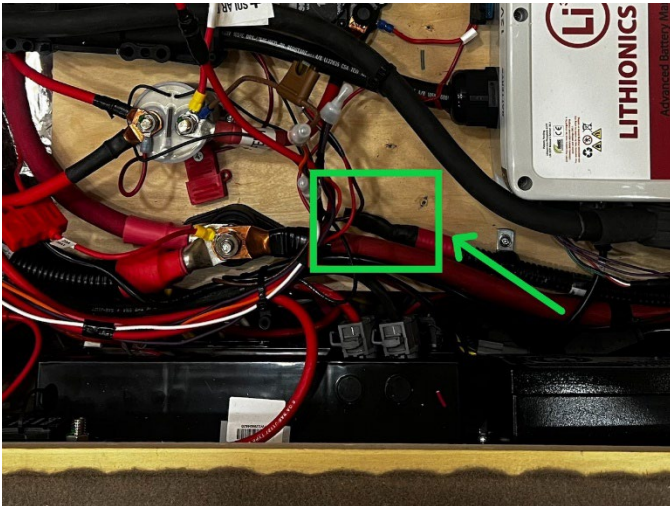


FIGURE 4



FIGURE 5

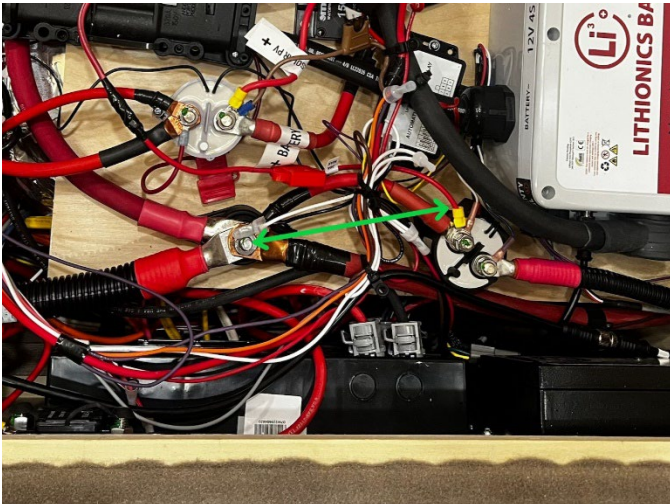
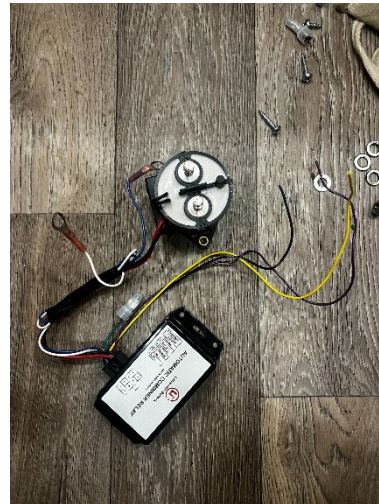


FIGURE 6



RECALL 24V005 REMEDY INSTRUCTIONS – CERTAIN Li3 MODELS ONLY



Make(s): GALLERIA
 Model(s): MANY, SEE BELOW
 Model Year(s): 2020 - 2024

Concern:
 In the event the battery boost wire shorts, or fails, it may shut down or damage the power steering of the vehicle. This condition may lead to a crash.

Repair Code: RC-093-09-00-004514
 Allotted Time: 1.50 HRS.
 Inspection Code: N/A
 Allotted Time: N/A

Photo(s) Required: YES, POST REMEDY
 Prior Authorization Required: YES
 Part(s) Kit Number: F100503421
 Part(s) Return: N/A

150 AMP BREAKER REMOVAL PROCEDURE

PARTS NEEDED: HEAT SHRINK, P-CLAMPS, ELECTRICAL TAP & ZIP TIES

TOOLS NEEDED: SCREW GUN, 9/16" SOCKET & HEAT GUN

STEP 1: LOCATE AND ACCESS 150 AMP BREAKER (FRONT DRIVER SIDE - UNDER CARRIAGE OF UNIT) (FIGURE 1);

STEP 2: REMOVE ANY ZIP TIES OR CLAMPS RESTRICTING THE REMOVAL OF 150 AMP BREAKER;

STEP 3: REMOVE THE RED 2 AWG CABLE CONNECTED TO THE AUXILIARY SIDE OF THE BREAKER USING A 9/16" SOCKET;

3A. APPLY HEAT SHRINK TO THE END OF THE CABLE USING A HEAT GUN;

3B. TAPE CABLE INTO HARNESS (FIGURE 2);

STEP 4: REMOVE THE RED 2 AWG CABLE ON THE BATTERY SIDE OF THE 150 AMP BREAKER USING A 9/16" SOCKET (FIGURE 3);

4A. REMOVE ZIP TIES OR CLAMPS RESTRICTING THE CABLE TO THE OEM TERMINAL POSTS;

4B. REMOVE THE RED 2 AWG CABLE FROM THE POST LEAVING OEM WIRING UNDISTURBED THEN TORQUE TO 141.62 IN-LBS.

(FIG. 4);

STEP 5: REMOVE THE 150 AMP BREAKER FROM THE FRAME AND COAT SCREW HOLES WITH EXTERIOR PAINT OR PRIMER (FIGURE 5);

STEP 6: RESECURE ANY LOOSE WIRES OR CABLES AND CLAMP THE HARNESS TO FRAME.

FIGURE 1



FIGURE 2



FIGURE 3



FIGURE 4

FIGURE 5

RECALL 24V005 REMEDY INSTRUCTIONS – CERTAIN Li3 MODELS ONLY

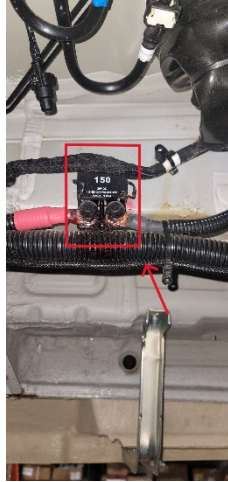
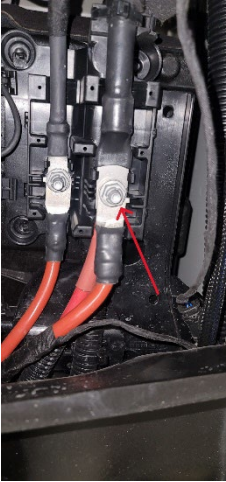


Make(s): GALLERIA
Model(s): MANY, SEE BELOW
Model Year(s): 2020 - 2024

Concern:
In the event the battery boost wire shorts, or fails, it may shut down or damage the power steering of the vehicle. This condition may lead to a crash.

Repair Code: RC-093-09-00-004514
Allotted Time: 1.50 HRS.
Inspection Code: N/A
Allotted Time: N/A

Photo(s) Required: YES, POST REMEDY
Prior Authorization Required: YES
Part(s) Kit Number: F100503421
Part(s) Return: N/A



EMERGENCY/BOOST SWITCH REMOVAL PROCEDURE

PARTS NEEDED: SNAP-IN PLUG & BELL CAPS

TOOLS NEEDED: WIRE STRIPPERS AND CRIMPERS, PRY TOOL & ELECTRICAL TAPE

STEP 1: LOCATE AND ACCESS BOOSTER SWITCH (FRONT DRIVER DASH) (FIGURE 1);

STEP 2: USING PRY TOOL, PULL SWITCH OUT FROM DASH AND DISCONNECT SWITCH FROM GREY 16 AWG WIRES (FIGURE 2);

STEP 3: CAP OFF BOTH GREY 16 AWG WIRES AND TAPE TOGETHER (FIGURE 3);

STEP 4: TUCK WIRES INTO DASH AND INSERT SNAP-IN PLUG (FIGURE 4);

STEP 5: REMOVE EMERGENCY START LABEL (FIGURE 5);

FIGURE 1



FIGURE 2

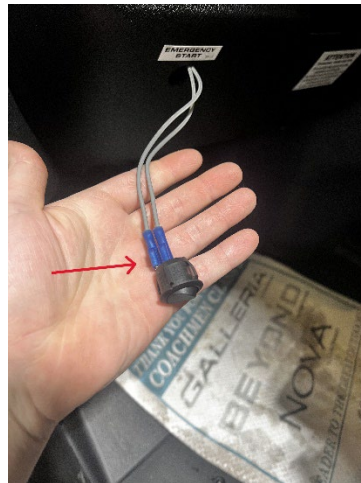


FIGURE 3

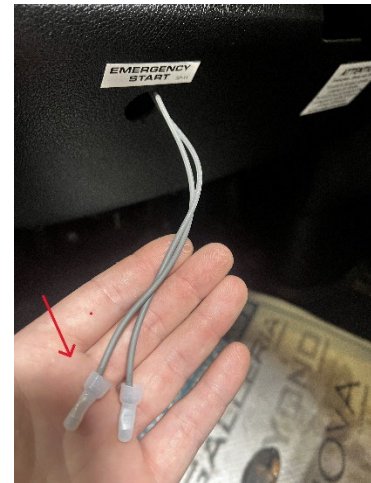


FIGURE 4

FIGURE 5

RECALL 24V005 REMEDY INSTRUCTIONS – CERTAIN Li3 MODELS ONLY



Make(s): GALLERIA
Model(s): MANY, SEE BELOW
Model Year(s): 2020 - 2024

Repair Code: RC-093-09-00-004514
Allotted Time: 1.50 HRS.
Inspection Code: N/A
Allotted Time: N/A

Concern:
In the event the battery boost wire shorts, or fails, it may shut down or damage the power steering of the vehicle. This condition may lead to a crash.

Photo(s) Required: YES, POST REMEDY
Prior Authorization Required: YES
Part(s) Kit Number: F100503421
Part(s) Return: N/A

