

RECALL 24V003 / 2024-002 REMEDY INSTRUCTIONS



Make(s): CHEROKEE – ICE HOUSE
Model(s): MANY, SEE BELOW
Model Year(s): 2020

Concern:
The drawbar locking mechanism may break at one or both bends.

Repair Code: RC-094-01-00-004481
Allotted Time: .50 HRS.
Inspection Code: RC-094-05-00-004480
Allotted Time: .30 HRS.

Photo(s) Required: YES, SEE BELOW
Prior Authorization Required: YES
Part(s) Kit Number: SEE BELOW
Part(s) Return: NO – DESTROY IN FIELD

Turn off LP Gas at LPG Tank(s). Disconnect the vehicles' battery Positive and Negative, disconnect any House battery(s) Positive and Negative, if equipped with a generator ensure it is off and lastly, ensure the vehicle is disconnected from shore power. Block any tires/wheels to prevent the vehicle from rolling. Failure to do so may result in electrocution, fire or other personal injury, property damage and/or death.

CERTAIN – 2020 CHEROKEE ICE HOUSE: CKT16BF, CKT16BFH, CKT16GR, CKT16GRH, CKT17BB, CKT17BBH, CKT17MP, CKT17MPH, CKT17TH & CKT17THH

PARTS TO ORDER:

1 - 377908 – WELDMENT, SWING ARM COUPLER 6000#
1 – 379611 - CANE BOLT 6 X 2 1/4 X 1/2 W/ HAIR PIN

REQUIREMENTS:

PHOTOS ARE REQUIRED OF ANY WORN, DAMAGED, CRACKED OR INCORRECTLY INSTALLED PARTS OF THE DRAWBAR AS OUTLINED IN PAGE 2 OF THE INSPECTION INSTRUCTIONS.

REMEDY:

REVIEW THE DOCUMENTS ATTACHED TO THIS LETTER.



FOREST RIVER ICE HOUSE SWING ARM DRAW BAR REPLACEMENT

Recall Number:	24V003		
Product:	Ice House Swing Arm Draw Bars	Labor Rate:	0.3 hours inspection only
Date:	January 31, 2024		0.5 hours inspection and replacement

Purpose

This document provides instructions for the inspection and replacement of Ice House swing arm draw bars that may be defective.

WARNING

The "WARNING" symbol above is a sign that a procedure has a safety risk involved and may cause death, serious personal injury, severe product and/or property damage if not performed safely and within the parameters set forth in this document.

CAUTION

The "CAUTION" symbol above is a sign that a procedure has a safety risk involved and may cause personal injury, product and/or property damage if not performed safely and within the parameters set forth in this document.

Safety

This document provides general instructions. Many variables can change the circumstances of any procedure, i.e. the degree of difficulty involved in the service operation and the ability level of the individual performing the operation. This document cannot begin to plot out procedures for every possibility, but will provide the general instructions for effectively installing, removing or servicing the system. In the event the skill level required is too advanced or the procedure too difficult, a certified technician should be consulted before performing the necessary operation. Failure to correctly install, remove or service the system may result in voiding the warranty, inflicting injury or even death.

Resources Required

- Appropriate wrenches and/or sockets
- Replacement Draw Bar Kit

Replacement Draw Bar Kit Components		
Part #	Description	Qty
377908	Swing Arm Coupler 6000#*	1
379611	Cane Bolt 6" x 2 1/4" x 1/2" w/ Hair pin	1

*The Swing Arm Coupler Assembly includes a new mounting bracket (Fig. 1B). The original mounting bracket is welded to the frame of the trailer and does not need to be replaced.

FOREST RIVER ICE HOUSE SWING ARM DRAW BAR REPLACEMENT

Recall Number:	24V003		
Product:	Ice House Swing Arm Draw Bars	Labor Rate:	0.3 hours inspection only
Date:	January 31, 2024		0.5 hours inspection and replacement

Inspection

Inspect the following components for correct assembly. If the drawbar has been assembled incorrectly, or if there is wear or damage evident, the drawbar must be replaced. See the Draw Bar Replacement section for more information.

NOTE: Take photos of any worn, damaged, or incorrectly assembled parts as shown in Figs. 3-9.

1. Remove the hair pin (Fig. 1A) and the cane bolt (Fig. 2A).

Fig. 1

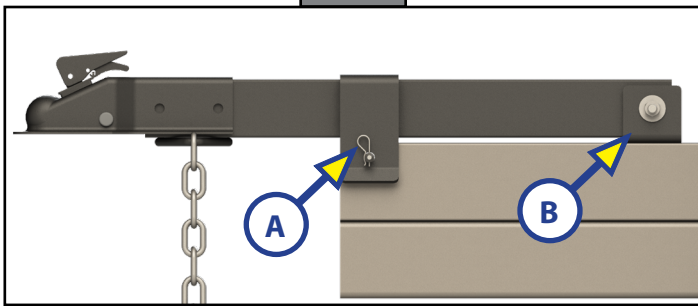
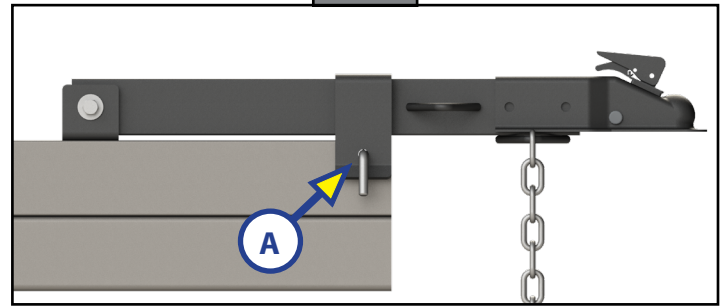


Fig. 2



2. Visually inspect the holes on both sides of the mounting bracket (Figs. 3A, 4A).

Fig. 3

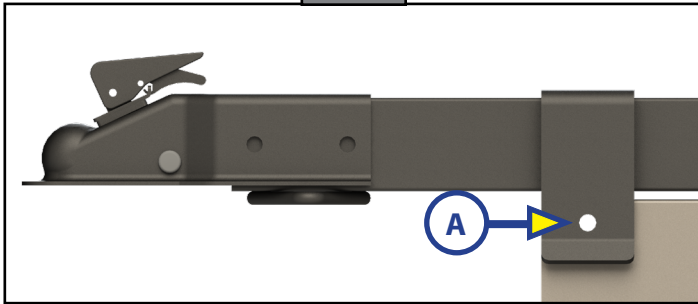
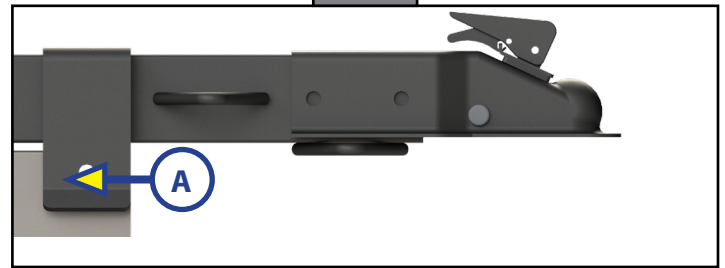
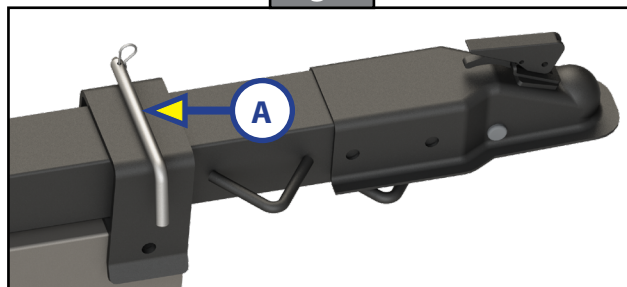


Fig. 4



3. Inspect the cane bolt (Fig. 5A) for straightness. If the holes are elongated or the cane bolt is bent, the drawbar must be replaced.

Fig. 5



FOREST RIVER ICE HOUSE SWING ARM DRAW BAR REPLACEMENT

Recall Number:	24V003		
Product:	Ice House Swing Arm Draw Bars	Labor Rate:	0.3 hours inspection only
Date:	January 31, 2024		0.5 hours inspection and replacement

4. Inspect the sides of the bracket (Figs. 6A, 7A) for deformation and/or any hairline cracking at the bracket's radius. If the bracket is damaged, the drawbar must be replaced.

Fig. 6

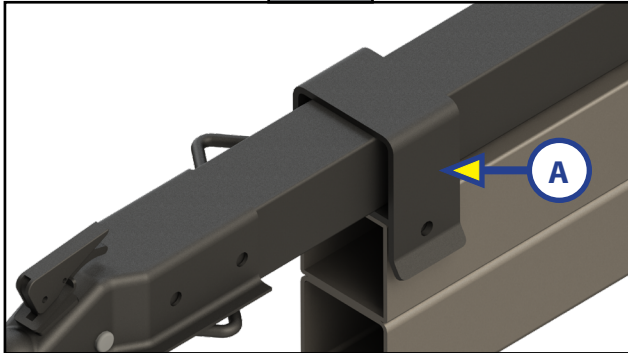
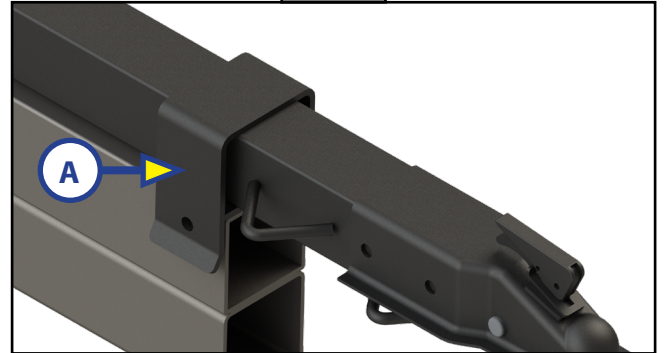


Fig. 7



5. Inspect the bolted connection for proper assembly. The flanged bushings (Fig. 8A, 9A) should be installed between the drawbar and the channel bracket as in Fig. 8. If the bushings are installed between the washer and the outside of the bracket (Fig. 9), the drawbar has been installed incorrectly and must be replaced.

Fig. 8 (Correct)

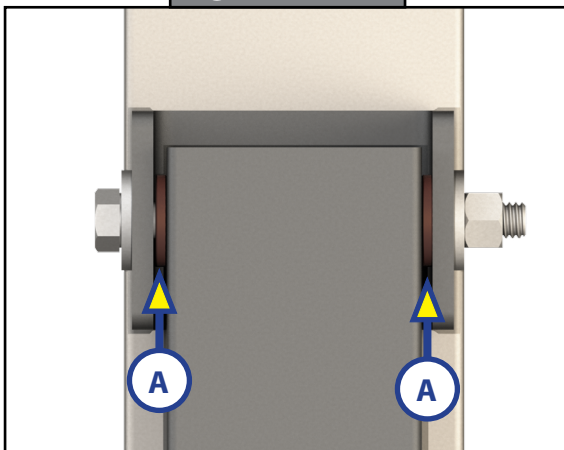
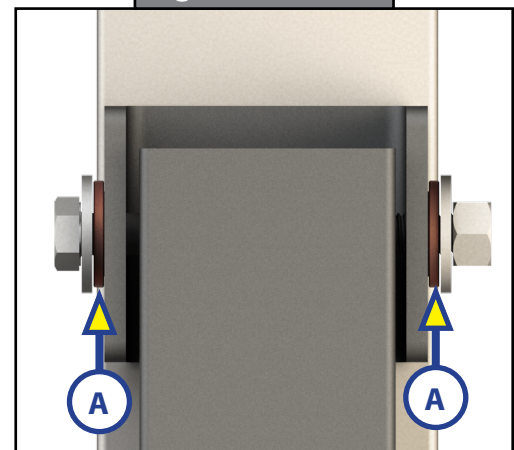


Fig. 9 (Incorrect)



FOREST RIVER ICE HOUSE SWING ARM DRAW BAR REPLACEMENT

Recall Number:	24V003		
Product:	Ice House Swing Arm Draw Bars	Labor Rate:	0.3 hours inspection only
Date:	January 31, 2024		0.5 hours inspection and replacement

Preparation

Support the front of the trailer using the tongue jack and chock the wheels.

Procedure

1. Remove and discard the hair pin (Fig. 10A).
2. Remove and discard the cane bolt (Fig. 11A).
3. Remove and discard the lock nut and washer (Fig. 10B).
4. Remove and discard the bolt (Fig. 11B), and washer (Fig. 11C).

Fig. 10

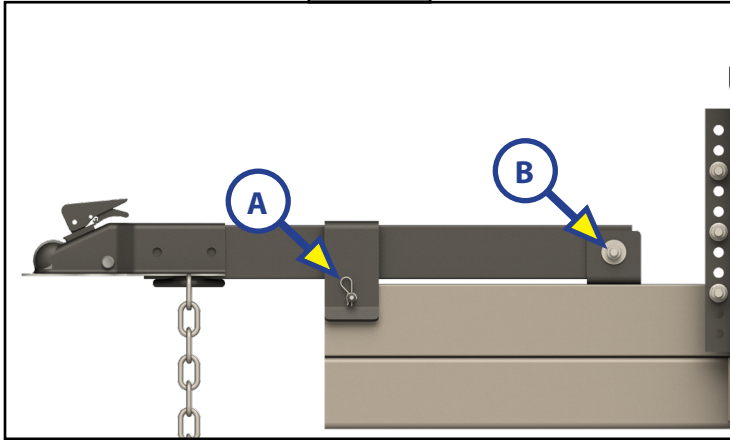
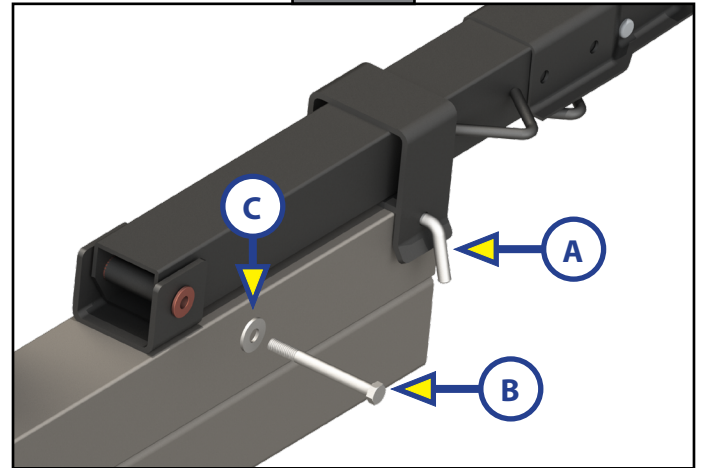
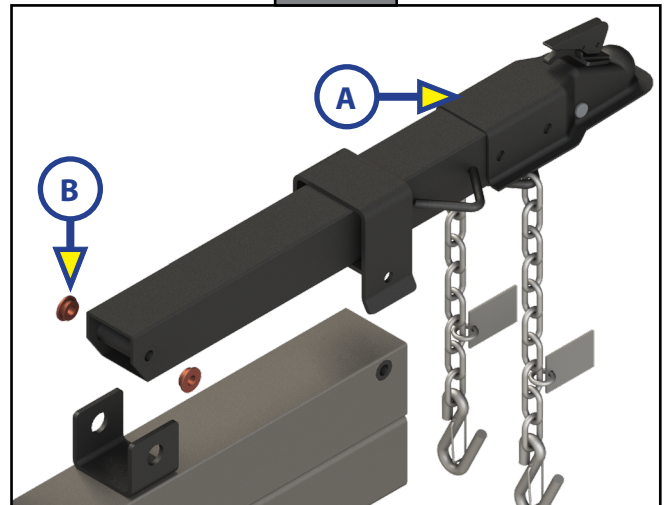


Fig. 11



5. Remove the drawbar Fig. (12A) from the trailer frame and remove the bushings (Fig. 12B) from channel bracket and discard.

Fig. 12



FOREST RIVER ICE HOUSE SWING ARM DRAW BAR REPLACEMENT

Recall Number:	24V003		
Product:	Ice House Swing Arm Draw Bars	Labor Rate:	0.3 hours inspection only
Date:	January 31, 2024		0.5 hours inspection and replacement

- Insert new bushings into the the channel bracket (Fig. 13). Make sure the flanges are facing inward as shown.
- Install the new drawbar into the channel (Fig. 14).

Fig. 13

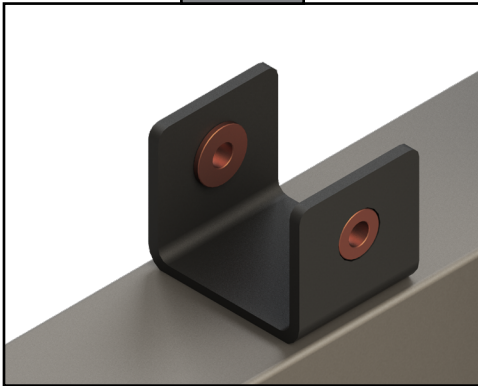
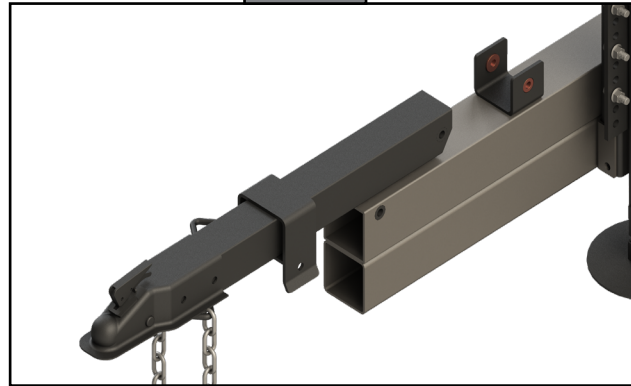
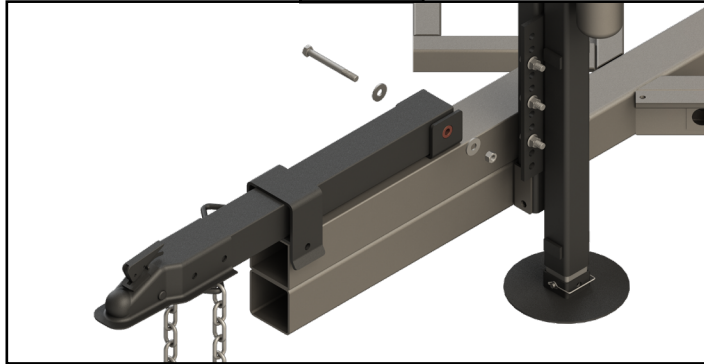


Fig. 14



- Fasten the drawbar to the bracket using the new bolt, washers, and lock nut. Note the order of assembly in Fig. 15. Tighten the lock nut snug against the channel bracket.

Fig. 15



- Insert the cane bolt through the hole in the mounting bracket (Fig. 16) and secure it with the new hair pin (Fig. 17A).

Fig. 16

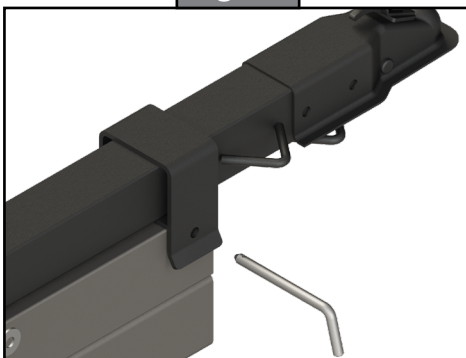
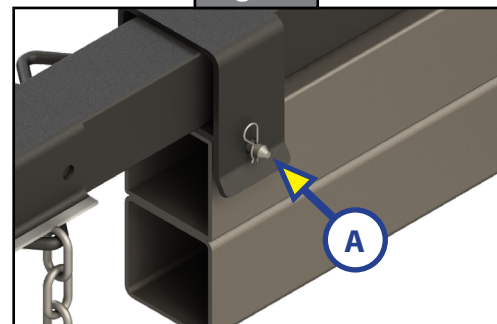


Fig. 17



As a supplier of a broad array of highly-engineered components in the recreation and transportation product markets, safety, education and customer satisfaction are our primary concerns. Should you have any questions, please do not hesitate to contact us at 432-LIPPERT (432-547-7378) or by email at customerservice@lci1.com. Self-help tips, technical documents, product videos and a training class schedule are available at lippert.com or by downloading the LippertNOW app.