

Range and Slide-in Replace Red/White Functional LED with Blue LED

Instructions

WARNING

This appliance is not intended for use by young children or infirm persons unless they have been adequately supervised by a responsible person to ensure they can use the appliance safely.

To prevent electrical shock and/or equipment damage, disconnect electrical power to the system at the main fuse or circuit breaker until installation is complete.

CAUTION

This electrical work must be performed by trained technicians only. Adhere to all local and national codes and ordinances. Take care when securing and routing wires so they do not short. Personal injury and/or property damage may occur.

1. Disconnect 12VDC power to the appliance before beginning work.
2. Open the glass cover (if equipped).



3. Remove the main top by pulling up the front and lifting free. Set aside.
4. Remove (4) screws securing the glass cover to cabinetry or burner box to cabinetry.



5. Remove the (2) screws under the door (ranges only) securing the front frame to the cabinetry.



6. Pull the appliance forward of the cabinetry approximately 3 inches.



7. Remove the (2) screws securing the left and right plastic end caps.



8. Pull the knobs free from the range and set aside.



9. Cut the black zip ties securing the red and black LED wiring to the manifold pipe.

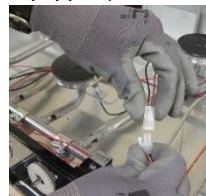


10. Disconnect the red and black LED wiring from the coach wiring. Keep coach wiring and be sure to prevent them from falling behind the appliance.



11. Remove (1) oven thermostat cover screw (if equipped).

12. Disconnect the oven lamp connector (if equipped).



13. Remove (2) screws securing T-stat control (if equipped).



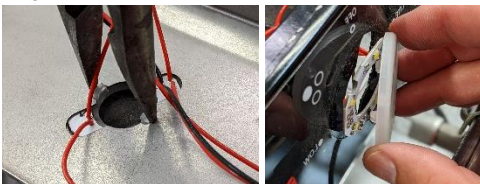
- Remove remaining screws securing the control panel to the range.



- Disconnect the burner ignition wiring from the piezo actuator or spark actuator (if equipped).



- Unplug wires from switch
- Remove the control panel.
- Disconnect lens caps by squeezing tabs and removing screws (if equipped). Remove LED rings from control panel and discard.



- Install blue light rings (reverse of step 18) and reinstall lenses. Be sure to orient the LED chain such that the power leads are on the left side of the control panel.
- Tape wires near thermostat to control panel such that they do not interfere with operation of the thermostat.
- Connect incoming power connector to middle switch terminal, LED Board power connector to top terminal, and oven light connector to bottom terminal (if equipped).
- Obtain control panel and reconnect burner ignition wiring (if equipped).



- Reconnect the oven lamp connector (if equipped).

- Place control panel over manifold and secure plastic end caps with (2) screws.



- Secure control panel to manifold and burner box with previously removed screws (4 minimum).
- Reinstall wire tie(s), securing wire to the manifold.



- Push the appliance back into the cabinetry and reinstall previously removed screws securing it to cabinetry.



- Reinstall knobs by fully pushing onto valve stem.
- Reinstall main top by engaging rear clips and pushing firmly downward on front of maintop.



- Close the glass cover (if equipped).
- Reconnect 12VDC power.
- Verify correct function of appliance. This completes the rework steps.

Service

For any questions, please reach out to the Suburban service department using the contact information below.

Suburban, An Airxcel Brand
 Service Department
 676 Broadway Street
 Dayton, TN 37321
 (574) 247-9235 Option 5

