



March 21, 2025

## SAFETY RECALL NOTICE

To: Featherlite Dealers

Subject: Safety Recall Campaign 24V-931

Involving: Featherlite Models 7821,7841,9807 & 9808 Living Quarters trailers

Featherlite Trailer Manufacturing, LLC, has determined that a defect, which relates to motor vehicle safety, exists in certain 2023 through 2024 Featherlite model 7821 7841 9807 & 9808 living quarters trailers. This defect involves an improper rubber LP hose used to hook up the cooktop. A failure of the rubber LP hose could result in a fire.

Notices will be sent to all registered owners of the trailers affected. A copy of the Owner Notification Letter is attached. Dealers are required to contact owners of unregistered trailers or to provide Featherlite with Name and address information.

**Important:** Some of the involved trailers may still be in your inventory. Federal law requires you to complete the recall service on those trailers before retail delivery.

Inspect and repair, if necessary, any affected trailers as they are brought into your dealership. Contact Featherlite warranty department should you have any questions regarding the repair. **A copy of the repair instructions are enclosed with this letter.**

You will be reimbursed in accordance with normal Featherlite warranty procedures. **For inspection and repair, the total labor allowance will be flat rated at 1/2 hour.**

If you have questions concerning this recall, call the Featherlite warranty department at 800-800-1230 or 563-547-6000 option 4

Your assistance in this important effort is appreciated.

Featherlite Trailer Manufacturing, LLC.

Encl:

## Cook Top Extension Dealer's Bulletin Instructions

**All parts needed to perform this process will be provided by Featherlite Exiss Sooner Trailers.**

### Safety:

- Wear the correct PPE, gloves and safety glasses, while performing this operation.
- Work in a well-ventilated area to avoid the buildup of LP fumes.

**WARNING: Never check for leaks with an open flame. Apply soap and water solution to all joints to see if bubbles form.**

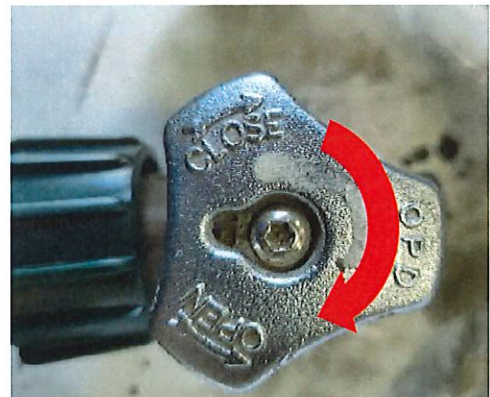
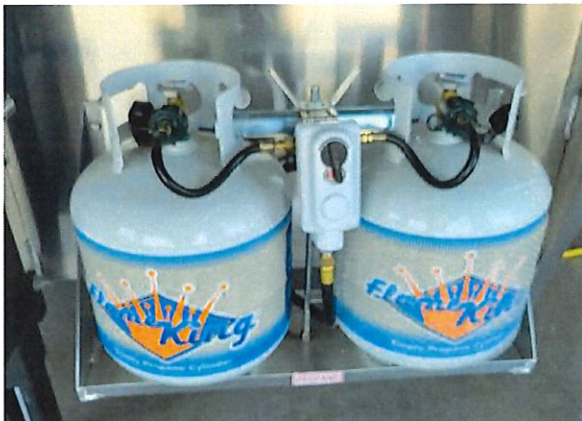
**FOLLOW ALL OTHER DANGER, WARNING AND SAFETY PRECAUTIONS FOR WORKING WITH LP GAS WHILE PERFORMING THIS ACTIVITY.**

Cook Top Repair Kit (PN: 0294100000)

Part Description	Quantity
FITTING - 3/8 BRASS FLARE UNION	1
FITTING FLARE FORGED NUT 3/8 BRASS	2
TUBING 3/8 OD x 1/4 ID COPPER	18"

### DIRECTIONS

1. Turn off/close the Propane tank valve, turning the tank handle to the closed position.

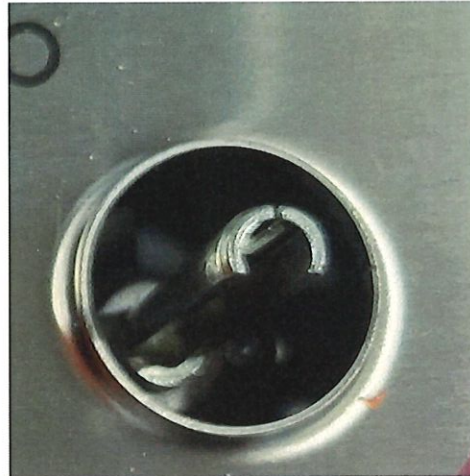


## Cook Top Extension Dealer's Bulletin Instructions

2. Purge the gas lines of the unit of the remaining LP gas by running the LP appliances in the unit until the appliances no longer have gas to operate.
3. Remove the knobs from the cook top surface element switch by pulling straight up on the knobs.



Pull straight up



Knob removed

4. Remove the 2 screws holding the burner box cover in place.

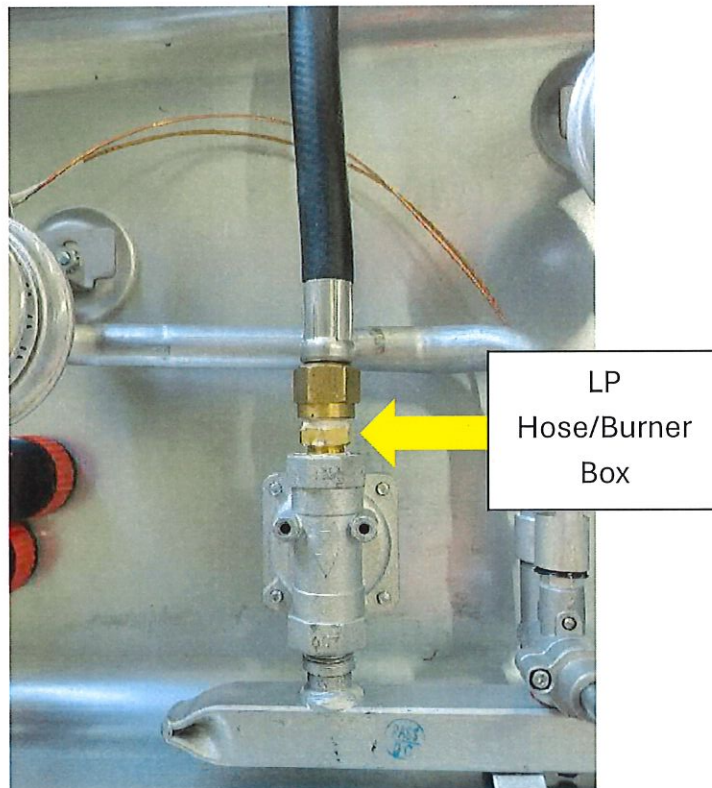


## Cook Top Extension Dealer's Bulletin Instructions

5. Remove the burner box cover by lifting the cover, the burner box should now be open and accessible to work.



6. Locate the fitting where the LP line connects to the cook top.





## Cook Top Extension Dealer's Bulletin Instructions

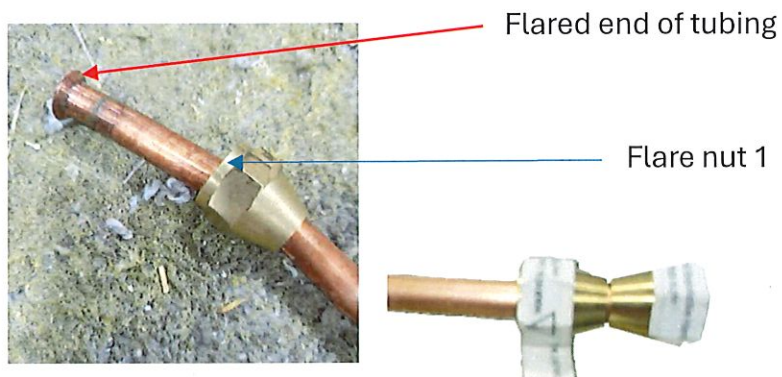
9. Detach the LP hose from the burner box and allow the hose to lay to the side in the cabinet.



10. Flare one end of the tubing,



11. Place both flare nuts on the copper tubing with the smaller openings of the flare nut facing each other.



## Cook Top Extension Dealer's Bulletin Instructions

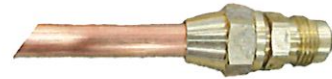
Flare nuts facing opposite directions



12. Verify both flare nuts are on the copper tubing and flare the other end of the tube.



LP Hose End



Cook Top End

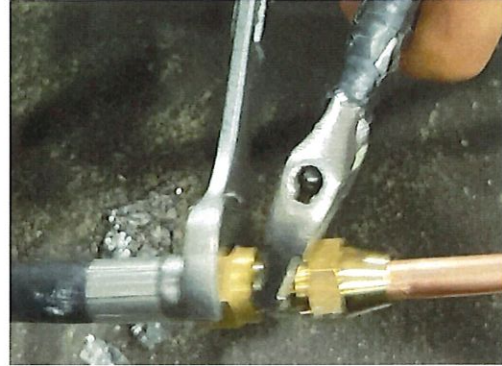
13. Attach the union adapter to one of the flare nuts, this end will be used to connect the copper tubing to the gas hook up located in the burner box.

**\*\*\*Note: Flare and Compression fittings do not require pipe dope. \*\*\***

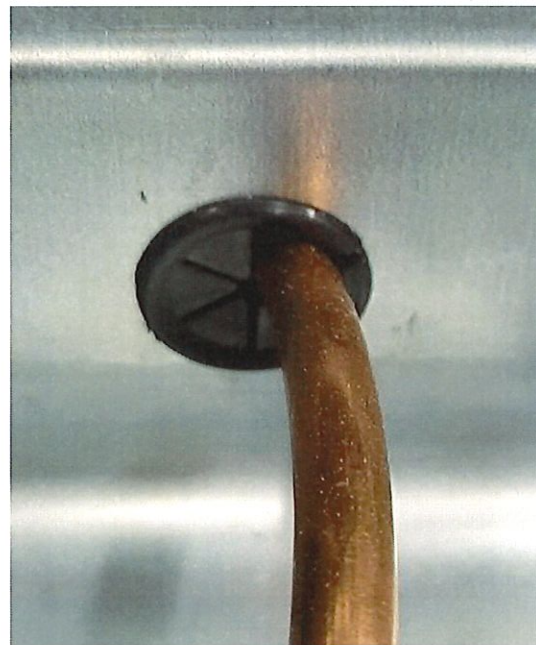
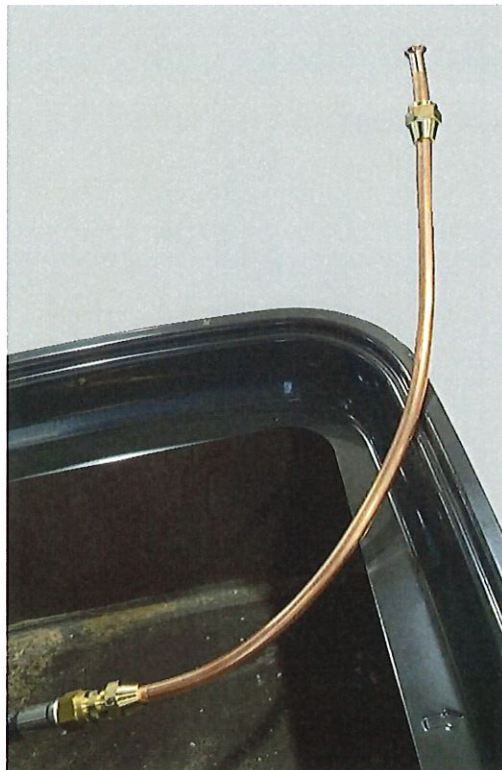


## Cook Top Extension Dealer's Bulletin Instructions

14. Connect the extension to LP line.



15. Slightly bend the copper tubing by hand and route the tubing through the knockout hole on the opposite side of the burner box gas hookup.

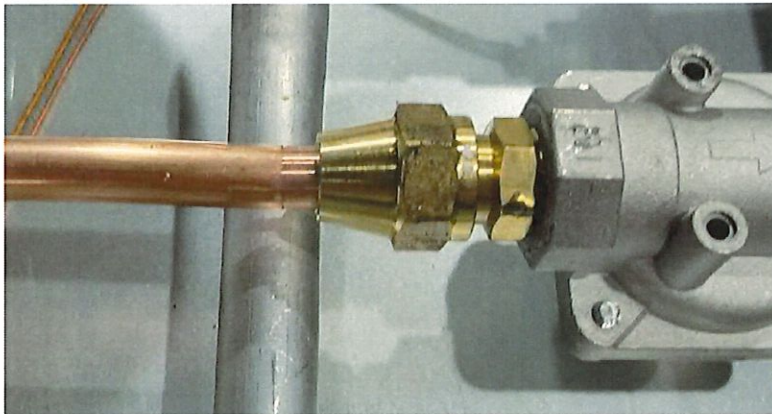


## Cook Top Extension Dealer's Bulletin Instructions

16. Continue to slightly bend the tubing until the tubing and the connection meet.



17. Attach the copper tubing to the gas burner connection of the cook top.

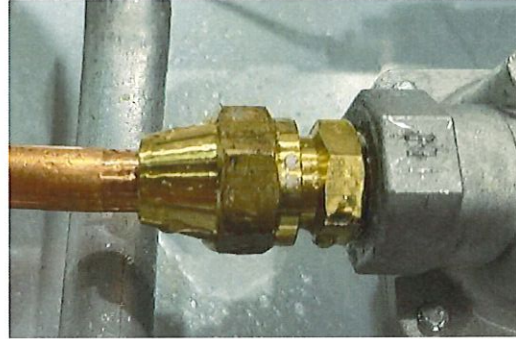
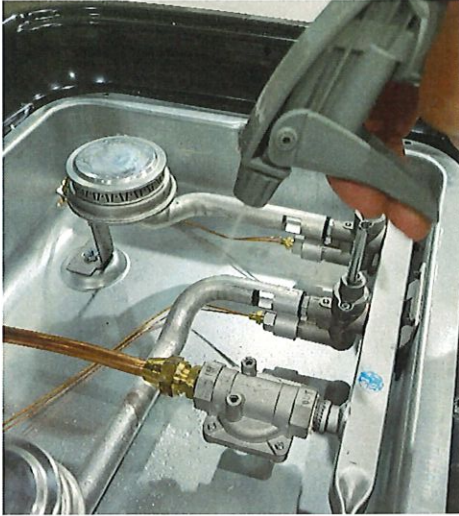


18. Prepare a spray bottle with soapy water, mainly water with a few drops of dish soap, or bought commercial leak detection solution is also acceptable.



## Cook Top Extension Dealer's Bulletin Instructions

19. Generously apply the solution to both new connections.



20. Slowly turn on the LP supply.



21. Observe the connections, looking for bubbles forming at the connections, this is an indication of a leak. As you are visually checking for bubble formation, listen for hissing and the smell of propane. These are also indications that there is a leak in the system. IF none of the mentioned observations are found to be true, the system is leak free.



Bubbles forming while gas is passing through the line is an indication the connection is not sealed. This connection has failed the leak test.

## Cook Top Extension Dealer's Bulletin Instructions

22. Tie and tack any extra length of hose in the cabinet to prevent the extra line from coming into contact with heat sources located inside the cabinet and/or impeding functionality of drawers.
23. Once the connection has been confirmed as leak free, reinstall the burner box cover, burner box screw and the gas burner control knobs.

