

A CUMMINS FIELD CAMPAIGN

Please Deliver To: Service Managers and Warranty Decision Makers

FROM: Cummins Global Warranty Administration Communications

Subject: X15 Fuel Pump Head Replacement Safety Campaign

Number: C7083

Date: 11-Sep-2025

Expires: 15-Jan-2060 (U.S./Canada)
15-Jan-2060 (International)

Attention: Worldwide distr./ branches and Div./Reg Offices
U.S. / Canadian Dealers
U.S. / Canadian Distr./Branches and Div. Offices (Automotive)

This is to revise and replace Campaign 7083-B, dated 27-Mar-2025. This revision is to:

- 1 Add Attachment B, and
- 2 Update the Action section.

If additional information is required, please contact your Cummins Warranty Operations Group Leader.

DESCRIPTION:

This Safety Campaign is being issued to address a defect that may exist in certain Cummins X15 engines manufactured between June 10, 2024 and September 3, 2024 and 18 ReCon engines built between August 17, 2024 and August 24, 2024 may be affected.

The Fuel Pump Heads installed on some of the engines in the suspect population may have been built using low fatigue strength parts, making them susceptible to fracture. If a Fuel Pump Head fractures, an external fuel leak and sudden loss of fuel pressure may occur, potentially causing the engine to stall without the ability to restart. An engine stall without the ability to restart may increase the risk of a crash.

ACTION:

In order to qualify for repair under this field action, an engine:

- 1 will be covered Regardless of coverage status, and
- 2 **must** show as OPEN on QuickServe® Online for this field action.

NOTE: The ESN list is attached for reference.

After verifying that the engine meets the above requirements, perform the following actions:

- 1 Remove the Fuel Pump Heads from the high-pressure pump. Please refer to Procedure 005-227 in the appropriate Service Manual.

NOTE: Do **not** remove the Roller Tappets. If tappets lift with Fuel Pump Heads when removing them, ensure Tappet Guide Alignment is correct before installing new Fuel Pump Heads. Follow Procedure 005-257 to ensure Tappet Guide Alignment. For further guidance, please refer to Attachment B

CAUTION: Failure to ensure Tappet Guide Alignment may lead to failure of the tappet.

- 2 Install new Sealing O-Rings #3028349 into the fuel inlet.

NOTE: Kits manufactured before November 9, 2024 may **not** include the Sealing O-Rings.

NOTE: Sealing O-Rings should **ONLY** be claimed if your kit did **not** include them.

- 3 Install both Fuel Pump Heads using Repair Kit #658475600PX.
- 4 Install new sealing washer (included in kit) onto the banjo connection on the air vent line at the Fuel Pump Head.

MATERIAL DISPOSITION:

Materials removed as a result of this field action must be scrapped.

NOTE: Select only the parts required to complete the repair. Miscellaneous Cummins parts, such as o-rings, gaskets, and fasteners, that are not in the Parts list but are required to perform the repair must be claimed using their part numbers, filed under the parts section of the claim and justified in the claim narrative.

NOTE: The part numbers listed are on manual allocation and may incorrectly show no inventory when checking availability in CUMPAS. To secure part # 658475600PX, please contact COM.CAMPAIGNS@CUMMINS.COM with the ESN for validation before parts will be allocated to your order. The parts orders will be released once the provided ESN is validated. If the repair is a unit-down situation, contact Cummins Care to expedite the release of the parts. An SR may be required from the distributor to further work the process.

REIMBURSEMENTS:

Parts:

The following parts are covered under this field action:

Part Number	Quantity	Description
302834900	2	SEALING O-RING (OPTIONAL)
658475600PX	1	KIT, FUEL PUMP REPAIR

NOTE: SRTs to gain access that are required to complete the repair, that are sufficiently explained in the claim narrative, may also be claimed on this action.

NOTE: All SRTs listed are OPTIONAL. Select **ONLY** the appropriate SRTs for the repair performed.

Labor using applicable Access Code and Time:

SRT Code	Description	Time
00-400	Steam Clean - Single Component Repair (OPTIONAL)	
00-902	Technician Administrative Time - Road/Field Repair (OPTIONAL)	
00-90F	Technician Administrative Time - Field Action Service Events (OPTIONAL)	
05-032	Fuel Pump Head - Remove and Install, All - X15 CM2350 X116B (OPTIONAL)	
05-06L	Fuel Pump Head - Remove and Install - X15 CM2350 X123B (OPTIONAL)	
05-07B	Fuel Pump Head - Remove and Install - X15 CM2350 X129B (OPTIONAL)	
05-07Z	Fuel Pump Head - Remove and Install, All - X15 CM2450 X134B (OPTIONAL)	
05-0E7	Fuel Pump Head - Remove and Install, All - X15 CM2450 X142B (OPTIONAL)	
05-176	FUEL PUMP HEAD - REMOVE AND INSTALL (OPTIONAL)	

Travel:

Travel is covered under this field action. Towing is covered under this field action.

Other Claimables:

Consumables are covered under this field action.

NOTE: Additional non-Cummins parts, such as o-rings, gaskets and fasteners, that are required to complete the repair, but **not** listed, may be claimed in Other Claimables. Please consolidate all consumables and claim them as one line item in Other Claimables titled CAMPAIGN SUPPLIES or other appropriate selections. Please include brief summaries on the details of items claimed. A lack of documentation in the narrative may result in a reduction in claim reimbursement or claim denial.

Claim Instructions:

For Cummins Dealers, claims for this Field Campaign **must** be filed via **RAPIDSERVE™** Web (rsw.cummins.com). For information regarding **RAPIDSERVE™** Web, please reference the "Warranty" tab in QuickServe® Online. If there are additional questions, please contact your local Cummins Distributor.

Account Code: 65
 Pay Code: North America Distributor = X
 Pay Code: North America Dealer = D
 Pay Code: International Distributor = I
 Pay Code: International Dealer = R
 Failure Code: WFHPHA

Attachments
 c7083_esn-list.xlsx;c7083_attachment-b.pdf



C7083 - X15 Fuel Pump Head Replacement Safety Campaign, Attachment B

Barrel Replacement Guidance

REVISION: 08/28/2025

1



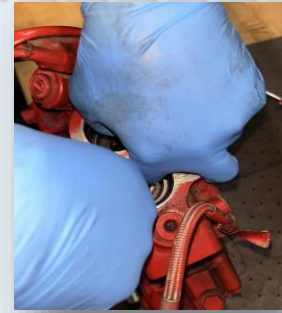
- When installing new barrels, ensure the tappet guide slot remains engaged with the tappet guide pin (NOTE: this photo taken with tappet removed).
- Durante la instalación de barriles, asegurarse que la guía de ranura del tappet permanezca unida con el pin guía (NOTA: la foto fue tomada sin el tappet).
- Lors de l'installation de nouveaux barils, assurez-vous que la fente de guidage du poussoir reste engagée avec la goupille de guidage du poussoir. (REMARQUE: cette photo a été prise avec le poussoir retiré).

2



- If the tappet becomes disengaged from the tappet guide pin, remove the tappet and align the pin manually (rotate the guide pin until flat edge is vertical)
- Si el tappet se separa del pin guía, remover el tappet y manualmente alinear el pin (rotar el pin guía hasta que el borde plano este vertical)
- Si le poussoir se désengage de la goupille de guidage, retirez-le et alignez la goupille manuellement (faites pivoter la goupille de guidage jusqu'à ce que le bord plat soit vertical).

3



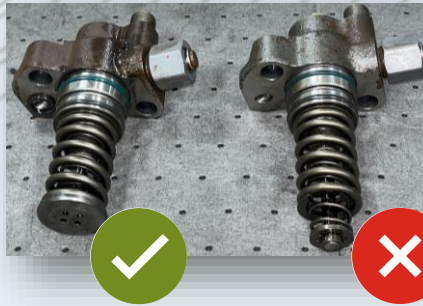
- Use two fingers to set a tappet in the bore
- Usar dos dedos para colocar el tappet en el agujero.
- Utilisez deux doigts pour installer le poussoir dans l'alésage.

4



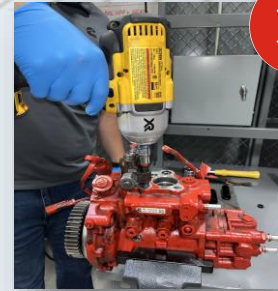
- Verify tappet guide pin engagement. Use your finger to try and rotate the tappet and ensure the alignment pin prevents rotation.
- Verificar unión del pin guía con el tappet. Utilizar su dedo para intentar rotar el tappet y asegurar el pin de alineación previene rotación.
- Vérifiez l'engagement de la goupille de guidage du poussoir. Utilisez votre doigt pour essayer de faire pivoter le poussoir et assurez-vous que la goupille empêche la rotation.

5



- Before installing the barrel assemblies, ensure that all components are present
- Antes de instalar los barriles, asegurarse que todos los componentes estén presentes.
- Avant d'installer les ensembles de barils, assurez-vous que tous les composants sont présents.

6



- Use of power tools is PROHIBITED. Install the cap-screws per the method as directed in procedure 05-227 of the X15 Service Manual
- El uso de herramientas eléctricas esta PROHIBIDO. Instalar los tornillos de cabeza de acuerdo al método prescrito en procedimiento 05-227 del manual de servicio de X15.
- L'utilisation d'outils électriques est INTERDITE. Installez les vis d'assemblage selon la méthode prescrite dans la procédure 05-227 du manuel d'entretien du X15

