

TO: Mercedes-Benz Dealer Principals, General Managers, Sales Managers, Service Managers, Parts Managers	FROM: Gregory Gunther, Senior Manager, Vehicle Compliance and Analysis, Engineering Services
RE: Recall Campaign Launch Notification Check Acceleration Sensor Wiring Harness Routing MY21-22 GLE (167 platform)	DATE: October 19, 2024

IMPORTANT RECALL CAMPAIGN UPDATE

Please see the attached documents related to the campaign listed above.

Please note that all customer inquiries should be directed to the Customer Assistance Center at 1-800-FOR-MERCEDES.

Sincerely,

Gregory Gunther

Senior Manager, Vehicle Compliance & Analysis



Recall Campaign Launch Notification			October 19, 2024
Campaign No. :	NHTSA ID	Campaign Desc. :	Check Acceleration Sensor Wiring Harness Routing
2024100006	24V724	24P5491320	
<p>This is to notify you of the Recall Campaign Launch to check the routing of the acceleration sensor wiring harness on 10,655 Model Year (“MY”) 2021-2022 GLE (167 platform) vehicles. The recall campaign will be visible on the www.NHTSA.gov website and may generate questions from customers. Affected VINs will be flagged in VMI as “OPEN” on October 19, 2024.</p>			
Background			
Issue	<p>Mercedes-Benz AG, the manufacturer of Mercedes-Benz vehicles, has determined that on certain GLE vehicles (167 platform), the wiring harness of the front acceleration sensors might not be routed according to current production specifications. In the event of a certain frontal crash scenario, this could cause an improper dual-stage frontal airbag deployment rather than a single-stage deployment as intended. As such, these vehicles fail to comply with the requirements of Federal Motor Vehicle Safety Standard 208 – Occupant Crash Protection.</p>		
What We’re Doing	<p>MBUSA will conduct a voluntary recall. An authorized Mercedes-Benz dealer will check the acceleration sensor wiring harness routing on the affected vehicles and rework it, if necessary.</p>		
Parts	<p>The remedy is available and can be performed.</p>		
Vehicles Affected			
Vehicle Model Year(s)	2021-2022		
Vehicle Model	GLE		
Vehicle Populations			
Total Recall Population	10,655		
Total Vehicles in Dealer Inventory	0		
<p>Given this notice, it is a violation of Federal law for a dealer to sell or lease any new vehicles in dealer inventory covered by this notification until the vehicle has been repaired. Once the remedy is available, the vehicles will be flagged as “OPEN” and Work Instructions will be available in NetStar VMI and Xentry Portal. Once the repair is complete, the vehicle may be sold or leased.</p> <p>Loaner and demonstrator vehicles may continue to be driven, but must not be retailed until repaired. As a matter of normal service process, please check for other repair measures which might be applicable to the vehicle(s).</p> <p>Additionally, given this notice, it is a violation of Federal Law for car rental companies to rent new vehicles covered by this notification until the vehicle has been repaired.</p>			
Next Steps/Notes			
Customer Notification Timeline	Customer letters will be mailed on or before November 1, 2024.		
AOMS/SOMS	AOMs – This recall may generate questions from your dealers. Please forward this notice to your dealers ASAP.		
Rental Fleet Partners	This recall may affect vehicles in your fleet. Please contact your respective MBUSA fleet representative for further information and next steps. For repairs, please contact your preferred MBUSA dealer.		
Customer Reimbursement	Customer reimbursement is not being offered for this campaign.		
<p>While we regret any inconvenience this may cause, MBUSA is determined to maintain a high level of vehicle quality and customer satisfaction. Please refer all customer inquiries to the Customer Assistance Center at 1-800-FOR-MERCEDES.</p>			



Recall Campaign Bulletin



Mercedes-Benz

Campaign No. 2024100006, October 2024

TO: ALL MERCEDES-BENZ CENTERS

SUBJECT: **Model GLE (167 platform)**
Model Year 2021 – 2022

Check Acceleration Sensor Wiring Harness Routing

Mercedes-Benz AG, the manufacturer of Mercedes-Benz vehicles, has determined that on certain MY 21 – 22 GLE (167 platform) vehicles, the wiring harness of the front acceleration sensors might not be routed according to current production specifications. In the event of a certain frontal crash scenario, this could cause an improper dual-stage frontal airbag deployment rather than a single-stage deployment as intended. As such, these vehicles fail to comply with the requirements of Federal Motor Vehicle Safety Standard 208 – Occupant Crash Protection. An authorized Mercedes-Benz dealer will check the acceleration sensor wiring harness routing on the affected vehicles and rework it, if necessary.

Prior to performing this Campaign:

- VMI must be checked before performing campaigns to verify that the campaign is required on a specific vehicle. Always check for any other open campaigns and perform accordingly.
- Please review the entire Campaign bulletin and follow the repair procedure exactly as described.

Approximately 10,655 vehicles are affected.

Order No. P-RC-2024100006

Recall Campaign Bulletin

Recall Campaign Bulletin

Recall Campaign Bulletin

Recall Campaign Bulletin

Recall Campaign Bulletin

Check Acceleration Sensor Wiring Harness Routing Model 167

Check/Test Procedure

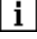
1. Remove front section from the front left fender liner.
 For basic data, see AR88.10-P-1301ME.



Figure 1

2. Check the wiring harness bracket (**Figure 2, A**) for the frontal acceleration sensor to ensure it is assembled correctly.

i Correct assembly position: (**Figure 2, A**).
 Incorrect assembly position: (**Figure 3, B**).

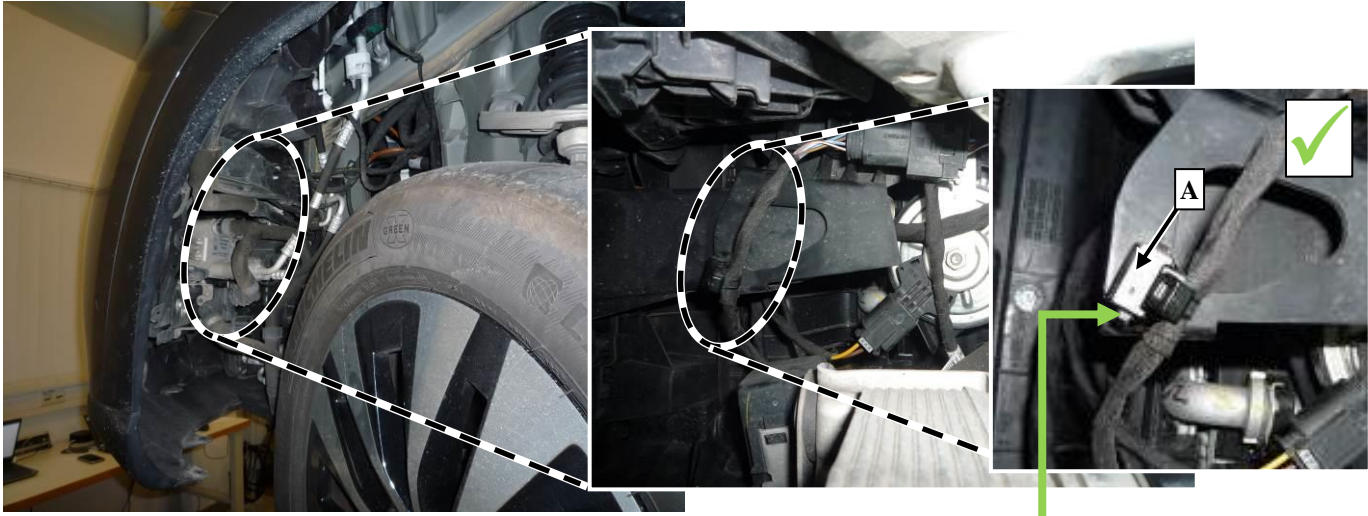


Figure 2

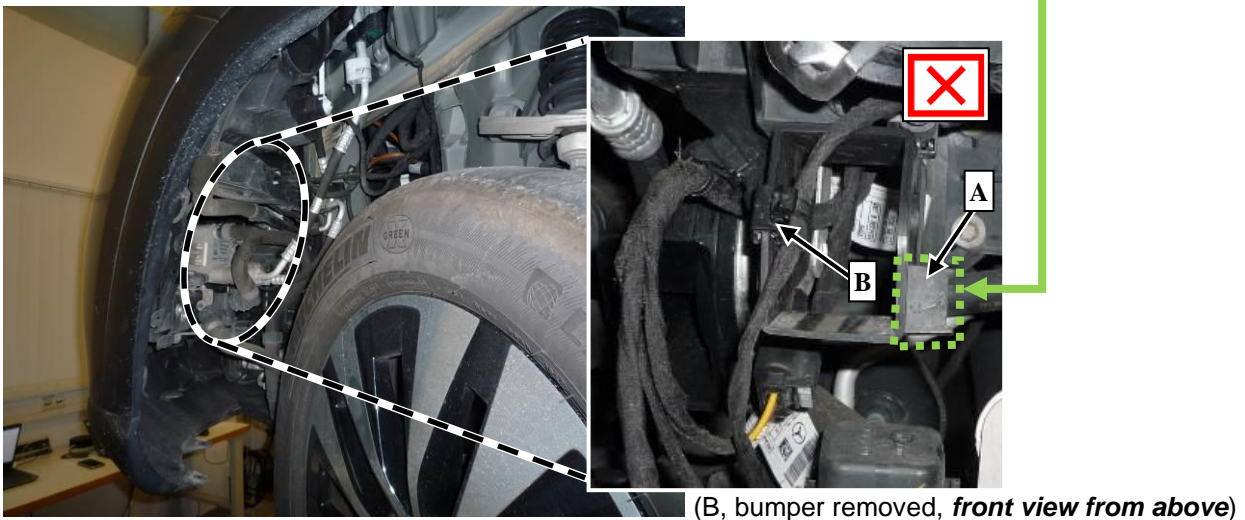


Figure 3

- a. Wiring harness bracket **correctly** (**Figure 2, A**) installed: **End measure**.
- b. Wiring harness bracket **incorrectly** (**Figure 3, B**) installed: Perform **Work Procedure**.

Work Procedure

1. Remove front bumper.
i For basic data, see AR88.20-P-2000ME.
2. Fit wiring harness bracket correctly as shown (**Figure 2, A**).
i Wiring harness bracket is attached to the existing tab (**Figure 3, A**).
3. Assemble in reverse order.

i **Note:** *The following allowable labor operation should be used when submitting a warranty claim for this repair:*

Warranty Information

Damage Code	Operation Number	Description	Labor Time (hrs.)
54 913 20	12-2267	Check electrical wiring harness for frontal acceleration sensor	0.3
	12-2268	Rework electrical wiring harness for frontal acceleration sensor (after check)	0.9

i **Note:** *Always check Xentry Operation Time (XOT) for the current OP-Code times. Labor times are subject to change and updates may not be reflected in this document.*