

TO: Mercedes-Benz Dealer Principals, General Managers, Sales Managers, Service Managers, Parts Managers	FROM: Gregory Gunther, Senior Manager, Vehicle Compliance and Analysis, Engineering Services
RE: <b>Recall Campaign Launch Notification</b> <b>Rework the Accelerator Pedal Module Bracket</b> <b>MY24 GLE (167 platform)</b>	DATE: March 22, 2024

## IMPORTANT RECALL CAMPAIGN UPDATE

Please see the attached documents related to the campaign listed above.

Please note that all customer inquiries should be directed to the Customer Assistance Center at 1-800-FOR-MERCEDES.

Sincerely,

Gregory Gunther

Senior Manager, Vehicle Compliance & Analysis



Recall Campaign Launch Notification			March 22, 2024
Campaign No. :	NHTSA ID	Campaign Desc. :	<b>Rework the Accelerator Pedal Module Bracket</b>
2024030009	24V117	24P2990005	
<p>This is to notify you of the <b>Recall Campaign Launch</b> to rework the accelerator pedal module bracket on <b>466</b> Model Year (“MY”) 2024 GLE (167 platform) vehicles. The recall campaign will be visible on the www.NHTSA.gov website and may generate questions from customers. Affected VINs will be flagged in VMI as “OPEN” on <b>March 22, 2024</b>.</p>			
Background			
<b>Issue</b>	<p>Mercedes-Benz AG (“MBAG”), the manufacturer of Mercedes-Benz vehicles, has determined that on certain MY 2024 GLE (167 platform) vehicles, the spot welds on the accelerator pedal module bracket might not meet current production specifications. During driving, the bracket might deform over time if the spot welds were to fracture. A complete detachment of the accelerator pedal module bracket from the body cannot be ruled out completely. In that event, the position of the accelerator pedal might shift, and thus potentially remain in the applied position, which would prevent kickdown or impair the application of the brake pedal. In this case, an increased risk of a crash or injury cannot be ruled out.</p>		
<b>What We’re Doing</b>	<p>MBUSA will conduct a voluntary recall. An authorized Mercedes-Benz dealer will drill through the respective spot welds on the affected vehicles and secure the bracket with rivets.</p>		
<b>Parts</b>	<p><b>The remedy is available and can be performed.</b></p>		
Vehicles Affected			
Vehicle Model Year(s)	2024		
Vehicle Model	GLE		
Vehicle Populations			
Total Recall Population	466		
Total Vehicles in Dealer Inventory	2		
<p><b>Given this notice, it is a violation of Federal law for a dealer to sell or lease any new vehicles in dealer inventory covered by this notification until the vehicle has been repaired. Once the remedy is available, the vehicles will be flagged as “OPEN” and Work Instructions will be available in NetStar VMI and Xentry Portal. Once the repair is complete, the vehicle may be sold or leased.</b></p> <p><b>Loaner and demonstrator vehicles may continue to be driven, but must not be retailed until repaired. As a matter of normal service process, please check for other repair measures which might be applicable to the vehicle(s).</b></p> <p><b>Additionally, given this notice, it is a violation of Federal Law for car rental companies to rent new vehicles covered by this notification until the vehicle has been repaired.</b></p>			
Next Steps/Notes			
<b>Customer Notification Timeline</b>	Customer letters will be mailed on April 5, 2024.		
<b>AOMS/SOMS</b>	AOMs – This recall may generate questions from your dealers. Please forward this notice to your dealers ASAP.		
<b>Rental Fleet Partners</b>	This recall may affect vehicles in your fleet. Please contact your respective MBUSA fleet representative for further information and next steps. For repairs, please contact your preferred MBUSA dealer.		
<b>Customer Reimbursement</b>	Customer reimbursement is not being offered for this campaign.		
<p>While we regret any inconvenience this may cause, MBUSA is determined to maintain a high level of vehicle quality and customer satisfaction. Please refer all customer inquiries to the Customer Assistance Center at 1-800-FOR-MERCEDES.</p>			



# Recall Campaign Bulletin



Mercedes-Benz

Campaign No. 2024030009, March 2024

TO: ALL MERCEDES-BENZ CENTERS

SUBJECT: **Model GLE (167 platform)**  
**Model Year 2024**

## **Rework Accelerator Pedal Module Bracket**

Mercedes-Benz AG, the manufacturer of Mercedes-Benz vehicles, has determined that on certain MY 2024 GLE (167 platform) vehicles, the spot welds on the accelerator pedal module bracket might not meet current production specifications. During driving, the bracket might deform over time if the spot welds were to fracture. A complete detachment of the accelerator pedal module bracket from the body cannot be ruled out completely. In that event, the position of the accelerator pedal might shift, and thus potentially remain in the applied position, which would prevent kickdown or impair the application of the brake pedal. In this case, an increased risk of a crash or injury cannot be ruled out. An authorized Mercedes-Benz dealer will drill through the respective spot welds on the affected vehicles and secure the bracket with rivets.

Prior to performing this Campaign:

- VMI must be checked before performing campaigns to verify that the campaign is required on a specific vehicle. Always check for any other open campaigns and perform accordingly.
- Please review the entire Campaign bulletin and follow the repair procedure exactly as described.

Approximately 466 vehicles are affected.

Order No. P-RC-2024030009

# Recall Campaign Bulletin

Recall Campaign Bulletin

Recall Campaign Bulletin

Recall Campaign Bulletin

Recall Campaign Bulletin

## Rework Accelerator Pedal Module Bracket

---

### Work Procedure

**NOTE:** Carefully review entire procedure before starting and ensure steps are performed exactly as described.

1. Lift vehicle on vehicle lift and partially release heat shield (**Figure 1, A**).

**i** The heat shield **does not** need to be removed completely. If necessary, slide a suitable piece of sheet metal between the underbody and the heat shield in the area (**Figure 1, 1**) to prevent damaging the heat shield when drilling the two rivet holes.



**Figure 1**

**i** Alternatively, use painters tape on **6.7 mm drill bit** to indicate drill depth. Drill depth should not exceed length of the blind rivet head (**Figure 2**), to prevent damaging the heat shield.



**Figure 2** – 6.7mm drill bit with painters tape relative to 6.5x12.5 blind rivet - not 1:1 scale



2. Remove front floor covering on driver's side.

**i** For basic data, see **AR68.80-P-0007ME**.

3. Drill the two lower resistance spot welds (**Figure 3, B**) on accelerator pedal module bracket using a **6.7 mm drill bit**.

**i** The rivet holes **must be drilled and riveted, one at a time**.

- The left-side (**Figures 4 & 5, C**) must be drilled first and then riveted (**Figure 6, D**).
- Then the right-side (**Figure 7, E**) must be drilled and riveted.

**i** The rivets **must be coated with seam seal (A 000 989 46 06)** before inserting them in the bore (**Figure 5**).

- Completed rivet should be visible from below after seam seal is applied (**Figure 8, D**)

**i** While drilling, ensure the heat shield and detachable parts are not damaged. Suction off and completely remove all drilling chips to ensure the area is clean.

- If damage occurs to the heat shield or detachable parts, a TIPS case must be opened.

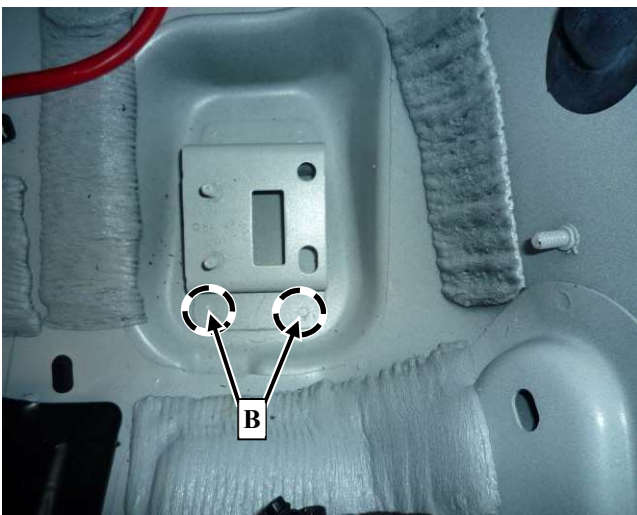


Figure 3

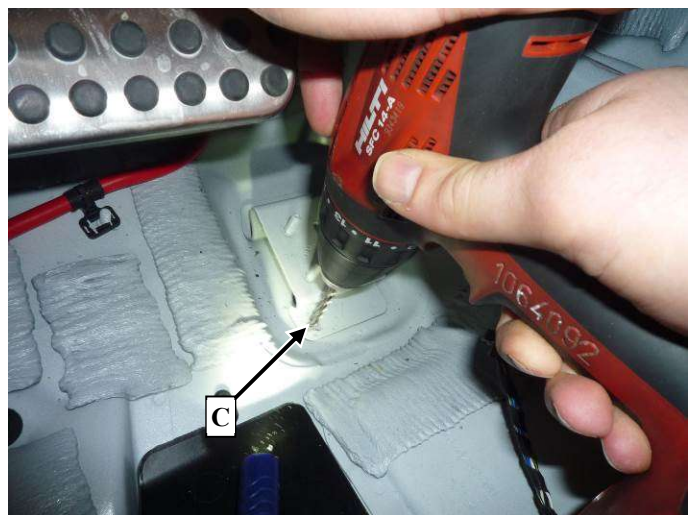


Figure 4

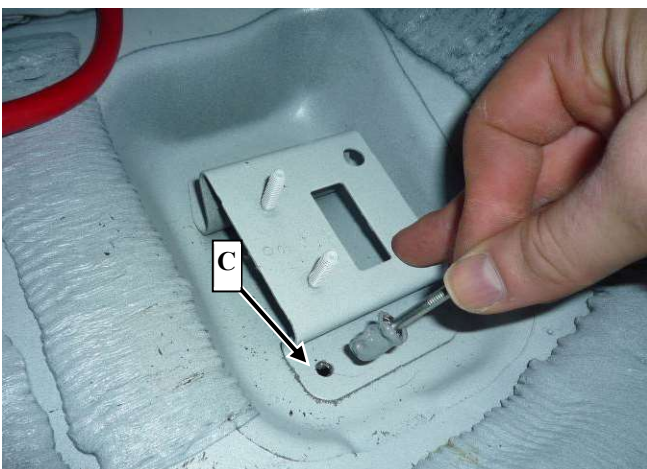


Figure 5

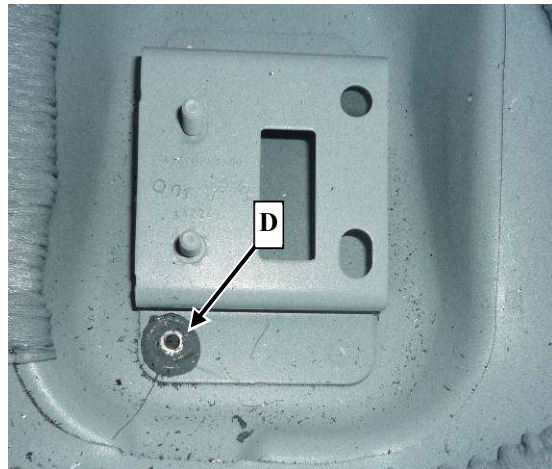
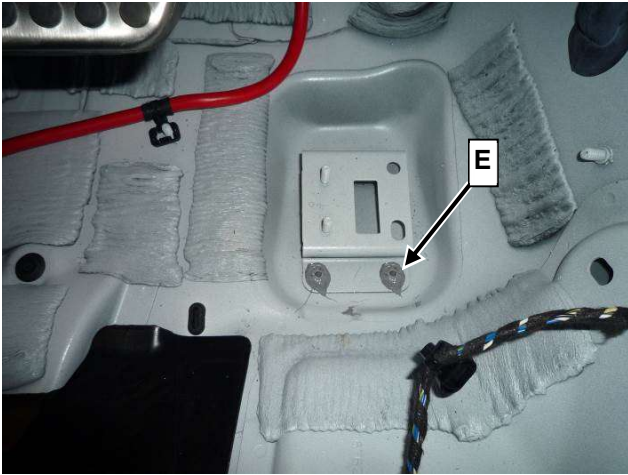
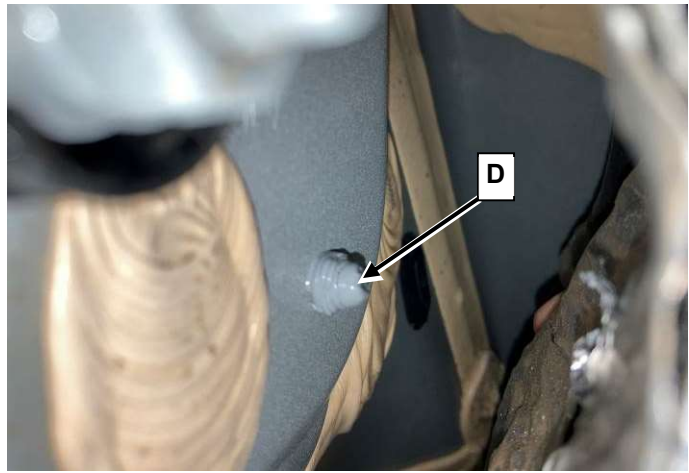


Figure 6

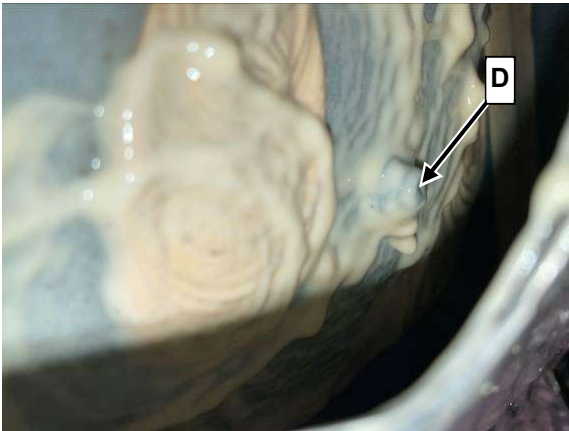


**Figure 7**

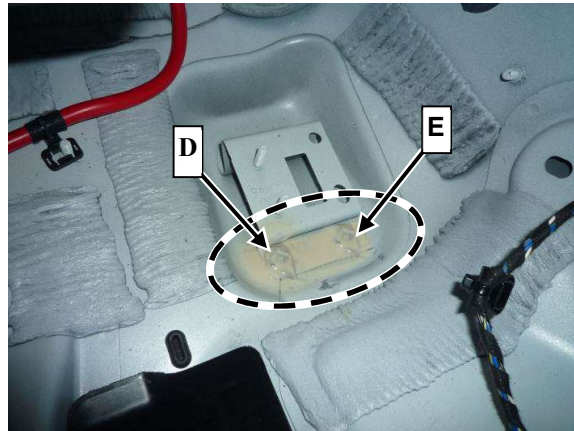


**Figure 8** (rivet D, view from below)

4. Clean the riveted area and apply **cavity preservation (A 000 986 32 01 09)** to both locations shown in **Figures 9 and 10**.



**Figure 9** (rivet D, view from below with cavity preservation)



**Figure 10** (rivets D & E, view from above with cavity preservation)

5. Assemble in reverse order.

**Primary Parts Information**

Qty.	Part Name	Part Number
2	Blind rivet (6.5 X 12.5)	A 000 991 76 32
As required (1) *	Seam seal	A 000 989 46 06
As required (1) *	Cavity preservation	A 000 986 32 01 09

\* One packaging unit suffices for at least 10 vehicles.

**i** Small parts such as screws, lock nuts, sealing rings, cable ties, fluids, sealant, etc. are not listed in the parts list. The required small parts are taken into account in the budgeting.

**i** **Note:** The following allowable labor operation should be used when submitting a warranty claim for this repair:

**Warranty Information**

Damage Code	Operation Number	Description	Labor Time (hrs.)
29 900 05	12-2058	Rework accelerator pedal module bracket <b>Includes:</b> Disconnect ground line, remove/install driver's seat and left front floor covering, drill, rivet and apply anticorrosion protection	1.9

**i** **Note:** Always check Xentry Operation Time (XOT) for the current OP-Code times. Labor times are subject to change and updates may not be reflected in this document.