

# SOP11450

## QAAR 10253-REV Battery Disc. Terminal Post Protection (plastic cover revision)

Department: 31  
 People Required: 1  
 Time to Complete: 0.50 hours  
 Date Created: Sept. 11, 2023  
 Date Revised: Rev #:  
 Created by Initial: BH Verified: BW

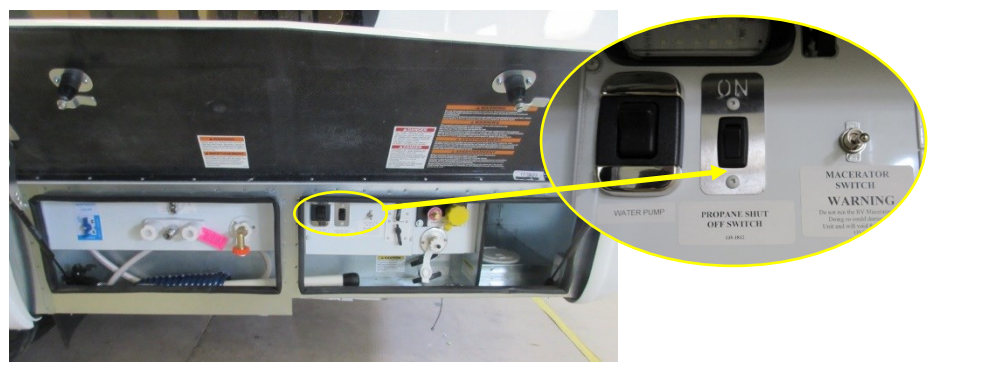


Terminal Post Protective Cover (cut down 126-0767) and 1/2" #1 screw (141-2687).

**Tools Required**


- #2 Robertson (Square) Screw Driver
- #1 Robertson (Square) Screw Driver
- Small Flat Head

**1**



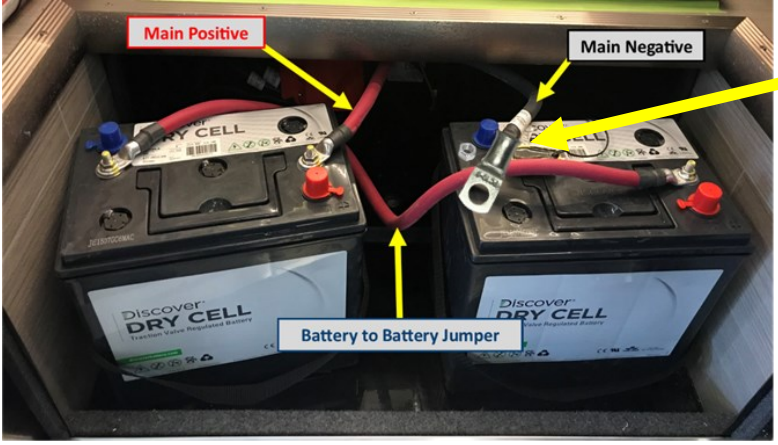
Turn OFF the propane supply.

**2**



Disconnect the shore power plug on the exterior of the coach and turn off the battery disconnect switch.

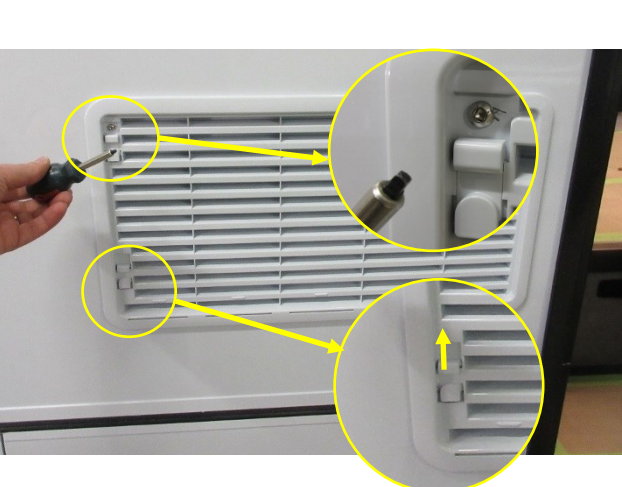
**3**



Disconnect the main negative cable on the house batteries.

**Caution: Failure to do so may result in damage to the fridge as it is removed.**


**4**



Remove the screw from the lower fridge vent with a #2 Robertson driver.

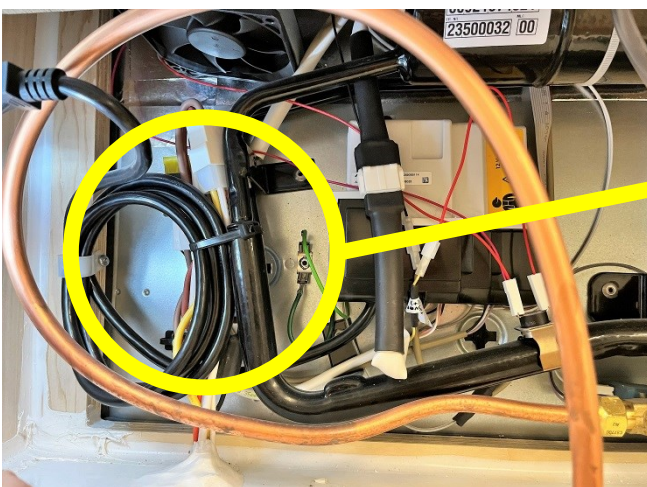
Push the clips up.

**5**



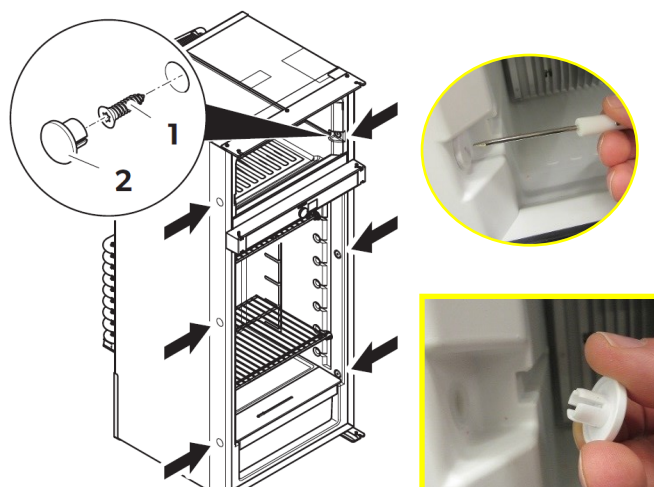
With both clips up, remove the vent by pulling on the left side of the vent and then sliding it out. Set vent aside.

**6**



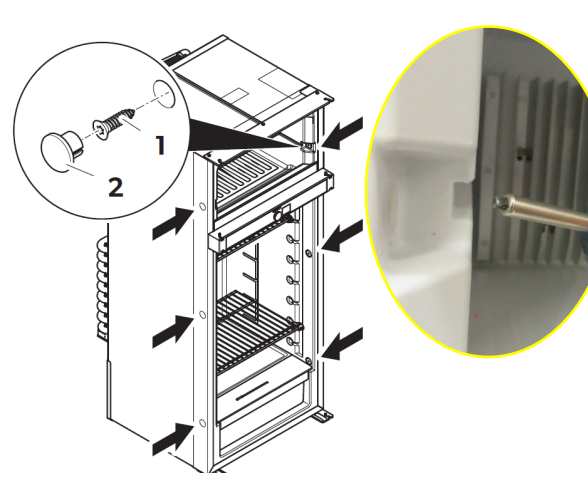
Be aware that there are some wires at the back of the fridge that are bundled together and will need to be released before moving the fridge.

**7**



Open the refrigerator & freezer doors and remove the screw covers one side at a time. Set covers aside.

**8**



Remove all Six (6) mounting screws with a #1 Robertson screw driver.

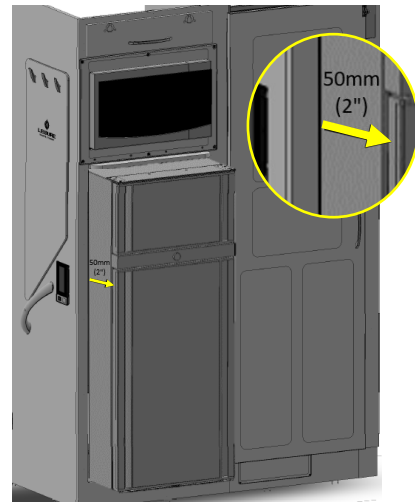
**9**



# SOP11450

## QAAR 10253-REV Battery Disc. Terminal Post Protection (plastic cover revision)

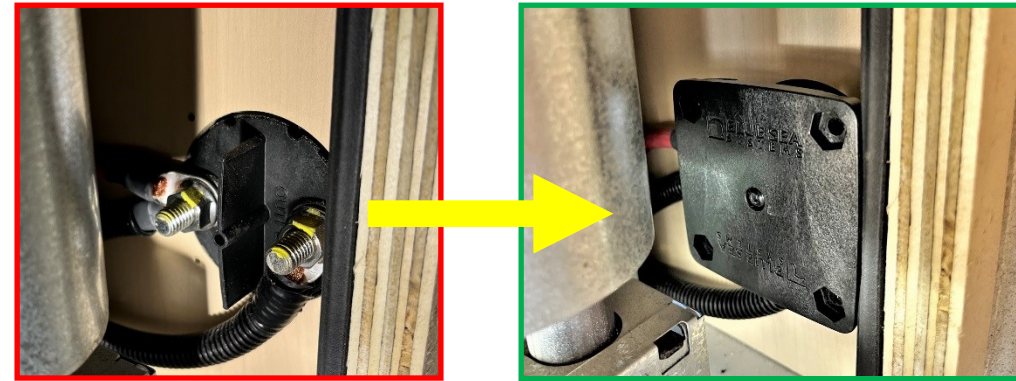
Department: 31  
 People Required: 1  
 Time to Complete: 0.50 hours  
 Date Created: Sept. 11, 2023  
 Date Revised: Rev #:  
 Created by Initial: BH Verified: BW



Close the refrigerator doors and pull the fridge slowly into the coach **50mm (2")** to allow access to the battery disconnect.

**Caution: do not move the fridge too much as it may dislodge the propane connection in the back.**

10



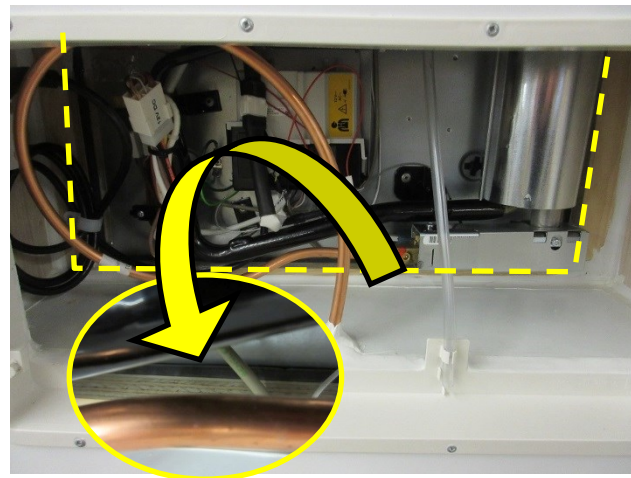
Place the post protective cover over the battery disconnect terminal posts and screw on using the 1/2" screw.

11



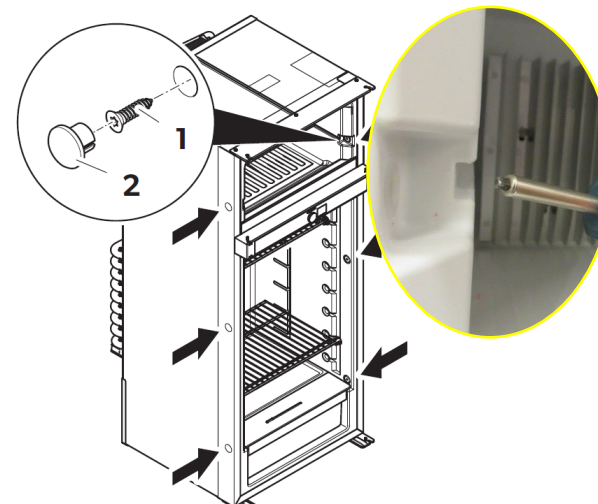
Gently push the Fridge back into the cabinet until the main body is flush with the cabinet face.

12



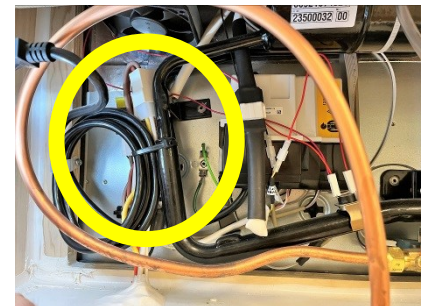
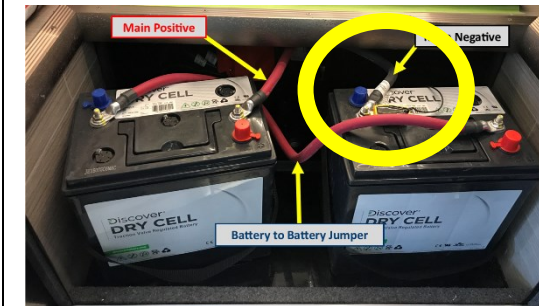
Visually check to make sure that there is no interference with the gasket and it is contacting the backside of the fridge.

13



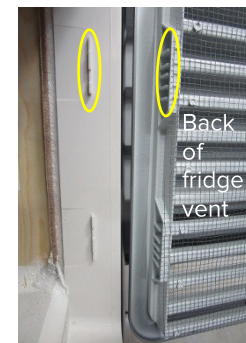
Reinstall the 6 mounting screws and caps.

14



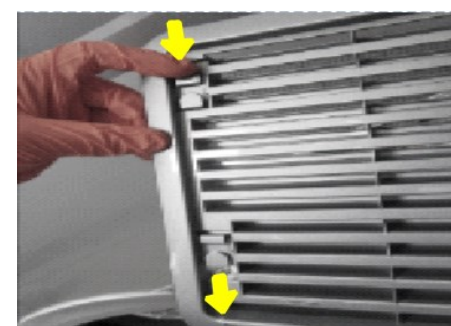
Reinstall the negative cable on to the coach batteries and resecure the wiring on the back of the fridge.

15



Reinstall vent by lining up the tabs on the right side of the frame with the slots in the grill and swivel the left side in.

16



Push both clips down and reinstall the top clip screw of the vent. Start screw by hand into the metal bracket on the vent frame. Be careful not to strip the screw or overtighten and crack the plastic.

17



Verify fridge vent cover is secure by grasping the vent louvers and gently pulling on them to check the right side tabs engaged correctly.

**Caution: failure to perform this may result in the vent dislodging during driving.**

18