

- ENSURE THE VEHICLE IS IN PARK AND THE EMERGENCY BRAKE IS ACTIVATED;
 - TURN OFF THE VEHICLE;
 - TURN OFF THE GENERATOR;
- LOCATE THE FORD OR RAM VEHICLE IDENTIFICATION NUMBER (“VIN”) STICKER;
 - OPEN THE DRIVERS SIDE DOOR;
 - FOR FORD – LOCATE THE FORD FEDERAL PLACARD ON THE “B” PILLAR (FIGURE 1);
 - FOR RAM – LOCATE THE RAM FEDERAL PLACARD ON THE DOOR (FIGURE 2);
 - RECORD THE 17 DIGIT VEHICLE IDENTIFICATION NUMBER (“VIN”) FOR USE LATER IN THIS LETTER;
- LOCATE THE GENERATORS STICKER/PLACARD AS SHOWN THE LOWER RIGHT HAND CORNER OF THE GENERATOR;
 - STAND BEHIND THE VEHICLE, YOU WILL SEE THE GENERATOR (FIGURE 3);
 - RECORD AND PHOTOGRAPH THE SERIAL NUMBER STICKER/PLACARD (FIGURE 4);
- **SCAN THE QR CODE OR VISIT** <https://forestriverinc.com/campaign/23v286/> AND ENTER THE FOLLOWING:
 - THE 17 DIGIT VEHICLE IDENTIFICATION NUMBER (“VIN”);
 - THE GENERATOR SERIAL NUMBER;
 - IF YOU TOOK A **CLEAR** PHOTO OF THE GENERATOR SERIAL-NUMBER, ATTACH IT AS WELL;
 - CLICK SUBMIT.



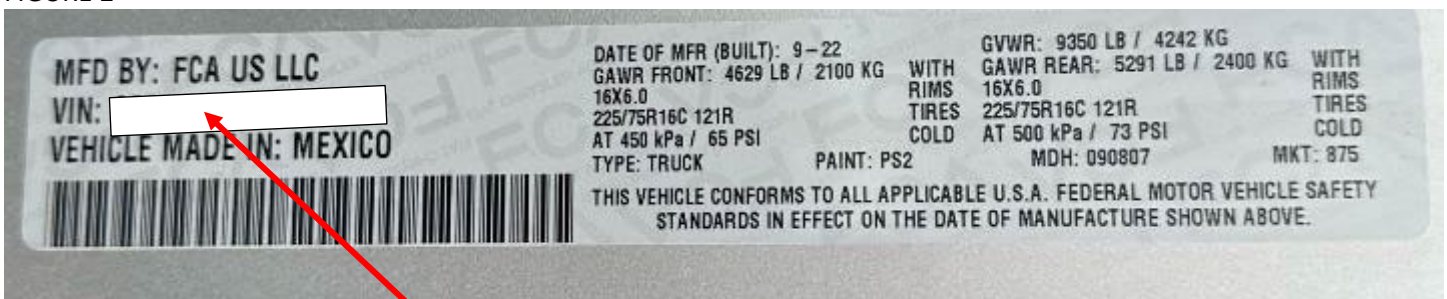
NOTE: YOU MUST MANUALLY ENTER THE GENERATOR SERIAL NUMBER AND 17 DIGIT VIN

FIGURE 1



RECORD THE 17 DIGIT VIN

FIGURE 2



RECORD THE 17 DIGIT VIN

FIGURE 3

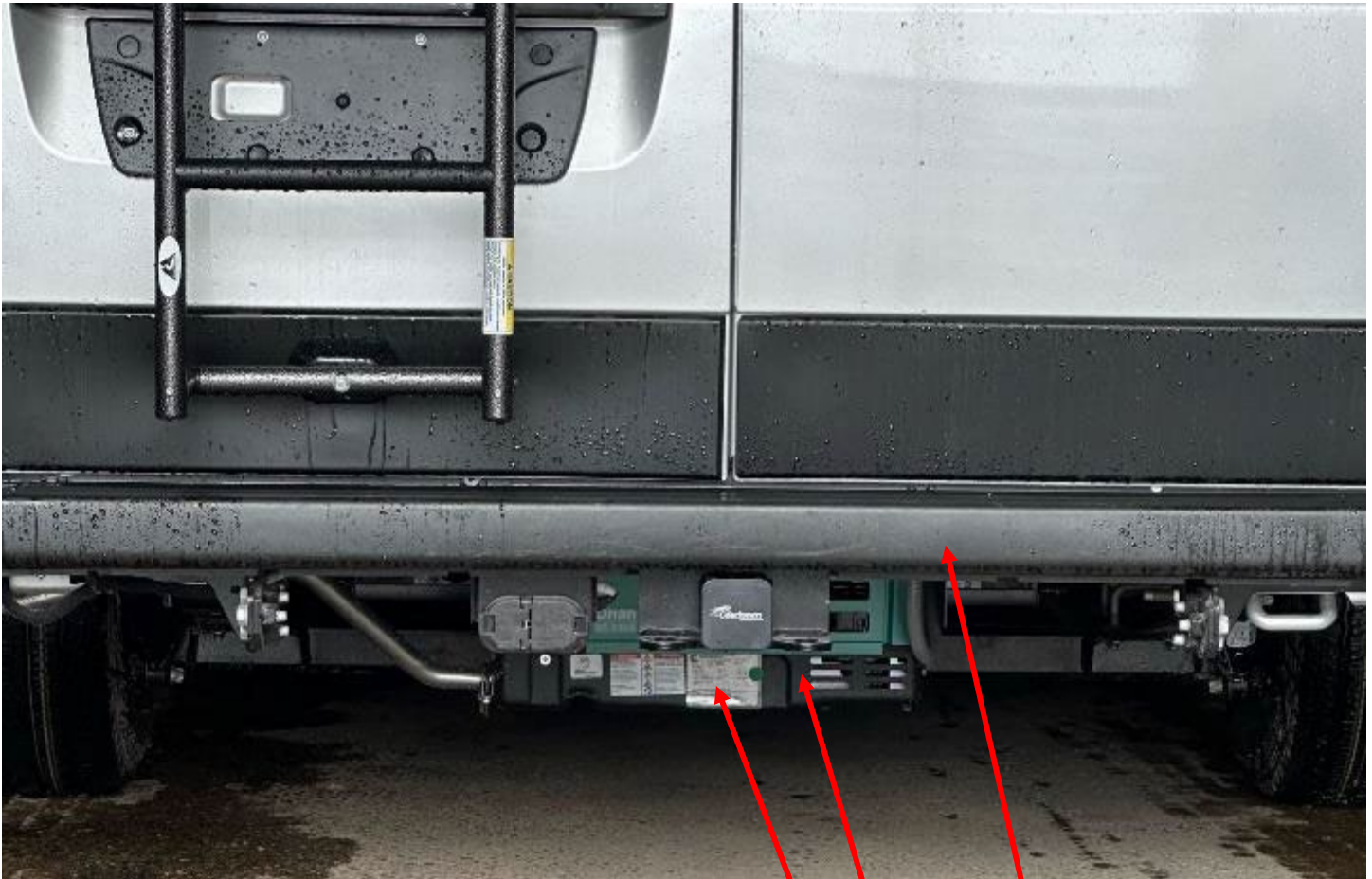
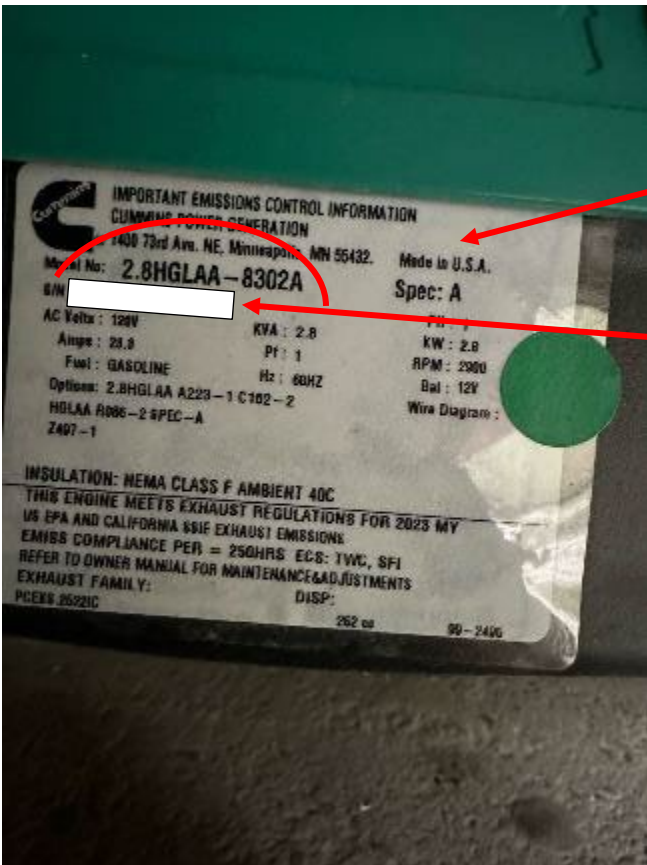


FIGURE 4



REAR OF VEHICLE (FORD OR RAM)

GENERATOR

GENERATOR STICKER/PLACARD

GENERATOR SERIAL NUMBER

REQUIRED: RECORD THE SERIAL NUMBER

OPTIONAL: TAKE A CLEAR PHOTO FOR SUBMISSION
THIS IS AN EXAMPLE SERIAL NUMBER – DO NOT USE.