



# SOP10110

## Inspection Recall for QAAR10243R1

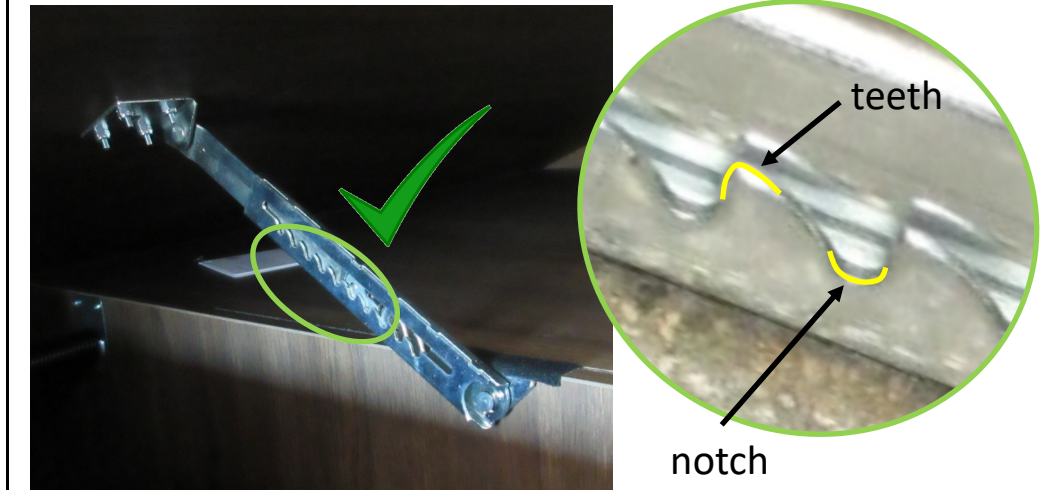
### W24RTB Ratcheting Bed Stay

Department: 17  
 People Required: 1  
 Time to Complete: 00:06:00  
 Date Created: 3-31-23  
 Date Revised:

Rev #:  
 Verified: BH



Open both bed lids to locate the ratcheting bed stay and inspect the bed stay focusing on the ratcheting mechanism.



The notch should be on the bottom with the 'teeth' pointing up.  
 If correct, no further action is required

2



If notch is on the top with the teeth pointing down a corrective action is required.

Contact Leisure Travel Vans Customer Service/Warranty for further instructions: 1-877-992-9906 or recalls@tripleerv.com

1

3