

August 15, 2025

Version 2

Safety Recall: 2019–20 RDX Driver’s Seat Belt Buckle Replacement

Supersedes 25-020, dated May 30, 2025, to revise the information highlighted in **yellow**.

AFFECTED VEHICLES

Year	Model	Trim Level	VIN Range
2019–20	RDX	ALL	Check the iN VIN status for eligibility.

REVISION SUMMARY

Added REPLACEMENT PART INSPECTION section to make the part verification process more visible.

BACKGROUND

Due to improper manufacturing of the seat belt buckle channel, the driver’s seat belt buckle may not latch properly. An improperly latched seat belt buckle may not securely restrain occupants during a collision, increasing the risk of injury.

CLIENT NOTIFICATION

Owners of affected vehicles will be sent a notification of this campaign.

Do an iN VIN status inquiry to make sure the vehicle is shown as eligible.

Some vehicles affected by this campaign may be in your new or used vehicle inventory.

Failure to repair a vehicle subject to a recall or campaign may subject your dealership to claims or lawsuits from the client or anyone else harmed as a result of such failure. Before selling a vehicle in inventory, always check if it is affected by a safety recall by conducting a VIN status inquiry.

CORRECTIVE ACTION

Replace the complete driver’s seat belt buckle assembly.

The Autoliv Buckle Service Application is no longer available on the American Honda Authorized Mobile Device. Seat belt buckle replacements that were not completed prior to receiving a Warranty Code from the Buckle Service Application under S/B 23-005 must be completed using the Seat Belt Buckle Replacement Procedure and Warranty Claim Information provided in this bulletin.

NOTE: The 11-digit serial number from the new buckle must be documented on the repair order and will be required to process the warranty claim.

CLIENT INFORMATION: The information in this bulletin is intended for use only by skilled technicians who have the proper tools, equipment, and training to correctly and safely maintain your vehicle. These procedures should not be attempted by “do-it-yourselfers,” and you should not assume this bulletin applies to your vehicle, or that your vehicle has the condition described. To determine whether this information applies, contact an authorized Acura automobile dealer.

WARRANTY CLAIM INFORMATION

- For repairs completed **May 30, 2025 or later**, use the warranty information below.
- For repairs completed **prior to May 30, 2025**, use the warranty information in service bulletin **23-005**.

Repairs Completed May 30, 2025 or Later

NOTE: To submit a warranty claim, the 11-digit serial number from the new buckle needs to be entered into the Replacement Serial Number field on the warranty claim form. Please have your technician provide the 11-digit serial number from the new seat belt buckle. **DO NOT enter the serial number of the buckle that was removed from the vehicle. The claim will not be approved.**

REPLACEMENT SERIAL NO. FIELD

Parts Information						
Failed Part No.▪		Failed Part Description▪				
Replacement Serial No.▪						
Item	Replacement Part No.▪	Quantity▪	Unit Price	Unit Total	Description	
1						Delete
2						Delete

Seat Belt Buckle Replacement

Operation Number	Description	Flat Rate Time	Defect Code	Symptom Code	Template ID	Failed Part Number
8551G2	Driver Seat Belt Buckle Replace (Includes: DTC clear).	0.4 hr	6XL00	LD900	B25020A	04816-TJB-A00ZB

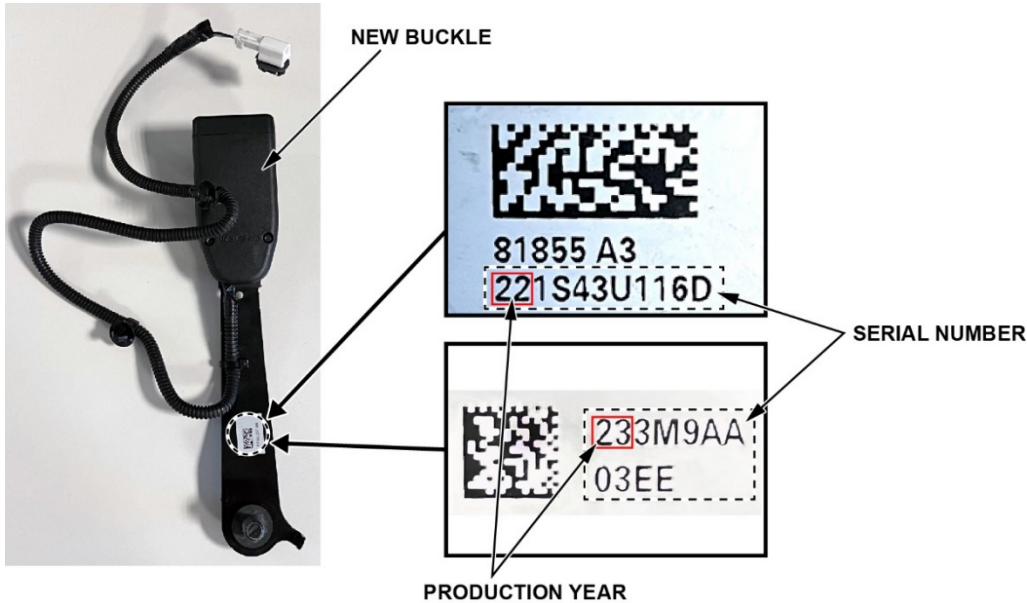
PARTS INFORMATION

Part Name	Part Number	Quantity
Left Front Seat Belt Buckle Set (Alluring Ecru)	04816-TJB-A00ZA	1
Left Front Seat Belt Buckle Set (Deep Black)	04816-TJB-A00ZB	1
Left Front Seat Belt Buckle Set (Platinum Gray)	04816-TJB-A00ZC	1

REPLACEMENT PART INSPECTION

IMPORTANT: Prior to installation, inspect the **NEW REPLACEMENT** seat belt buckle to ensure the production year is correct.

1. If the new replacement seat belt buckle serial number begins with “18”, DO NOT INSTALL the buckle. The buckle should be returned to American Honda. The first two digits of the serial number indicate the year of production and should begin with “19” or greater.



2. Before installing the new buckle, write the 11-digit serial number (including the digits reflecting the year of production) of the NEW buckle on the repair order. The serial number is a required field on the warranty claim and must be provided to your Warranty Administrator to ensure the claim is not rejected.

REPAIR PROCEDURE

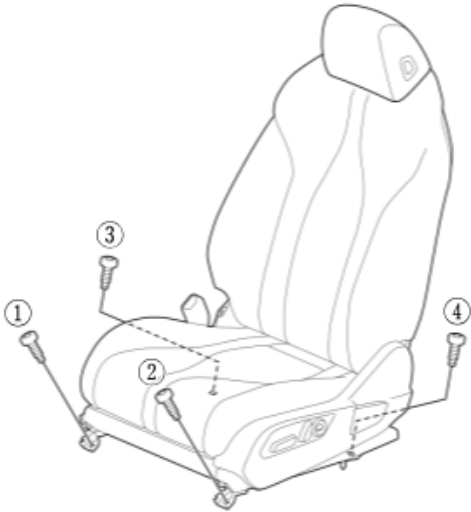
Seat Belt Buckle Replacement Procedure

1. Remove the driver's seat mounting bolts.
2. Disconnect the 12-volt battery – [12 Volt Battery Terminal Disconnection and Reconnection](#).
3. Remove the driver's seat.
4. Remove the driver's seat belt buckle and discard.
5. Install the new driver's seat belt buckle and torque to **32 N·m (24 lb-ft)**.



6. Install the driver's seat and hand tighten the seat mounting bolts.
7. Reconnect the 12-volt battery – [12 Volt Battery Terminal Disconnection and Reconnection](#).

8. Adjust the seat as needed to tighten the bolts, then torque the bolts in sequence to **43 N·m (32 lb-ft)**.



9. Confirm the buckle is functioning correctly by inserting the tongue into the buckle and tugging on the seat belt to confirm the buckle is securely latched. Unlatch the buckle and repeat the process **3-4 times**.

Does the buckle latch securely?

Yes – Proceed to the next step.

No – Repeat steps 2 through 13 to install a new buckle.

10. Do the [VSA Sensor Neutral Position Memorization](#):

11. Check to see if the SRS indicator light is on in the instrument panel:

1. Press the start button twice to set the power mode to ON, then monitor the SRS indicator. The indicator should illuminate, then turn off within **10 seconds**.

- If the indicator remains on, proceed to the next step.
- If the indicator turns off within **10 seconds**, the repair is complete.

12. Do an ALL DTC Check:

1. Connect the i-HDS to the vehicle and select ALL DTC Check.
2. Expand the SRS/SWS DTC Menu to display the SRS DTCs.
3. Do any of the DTCs match any of the buckle related DTCs listed below?

Yes – The buckle is defective. Repeat steps 2 through 13 to install a new buckle.

No – Open a separate repair order and continue with normal troubleshooting.

BUCKLE LOCATION	BUCKLE DTC	DESCRIPTION
Driver	B0050-11	Short or decreased resistance in the driver's seat belt buckle switch
Driver	B0050-12	Short to power in the driver's seat belt buckle switch
Driver	B0050-13	Open or increased resistance in the driver's seat belt buckle switch
Driver	B0050-2B	Short to another wire harness in the driver's seat belt buckle switch