

Equipment Needed:

- Drill
- Pop gun
- #11 (3/16") drill bit
- #20 (5/32") drill bit



- Torque wrench with 3/4" socket
- Vise grips 2 ea.

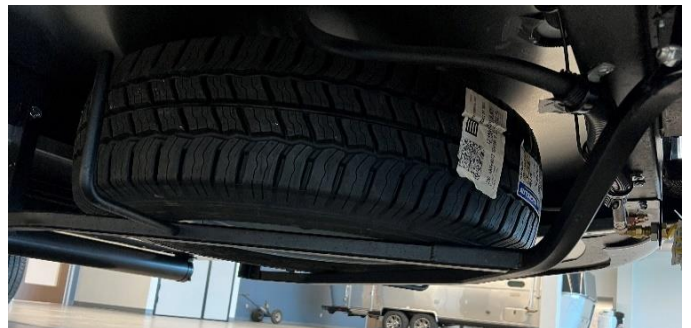


Parts Needed:

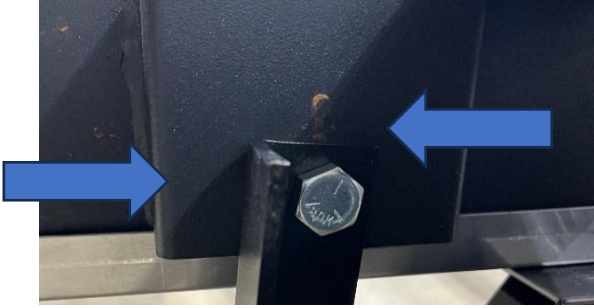
- 456046 Spare tire carrier bracket 1 ea.
- 345251-01 13x1" bolt 2 ea.
- 330031-03 SS rivet 14 ea.
- 365222-02 VHB tape 12" 2 ea.
- 455556-3 Hat bracket (only if it needs replaced due to cracking)
- NPN Spacer (make from side sheet metal 1-1/2" x 12") 2 ea.



If not already, remove the spare tire from the cradle to gain better access to the brackets. To do so, remove the cotter pin and pull the bracket pin. While holding the handle, flip the bracket off of the brace and lower the tire cradle.



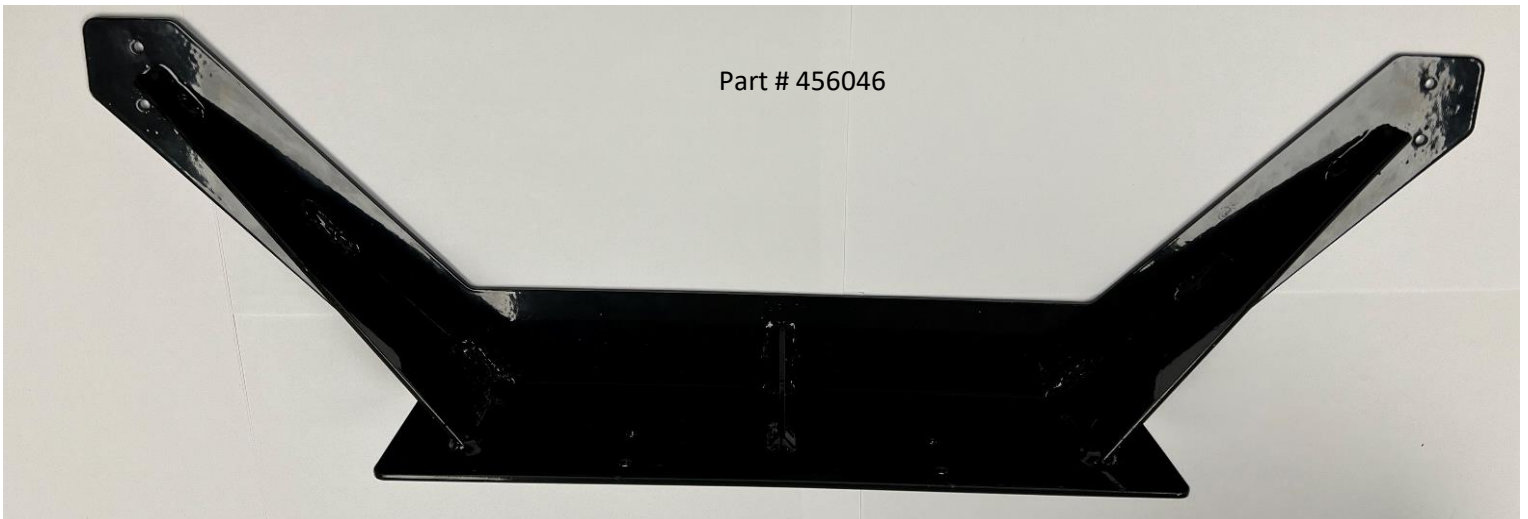
Before installing the new spare tire carrier bracket the original hat bracket needs to be inspected for cracking. If any cracking is present, the hat bracket will need to be replaced.



If cracking is present in the hat bracket, remove it by cutting the welds and welding in a new hat bracket. Part number 455556-3.



If no cracks are present, or once a new hat bracket has been installed, proceed with installing the new spare tire carrier bracket.



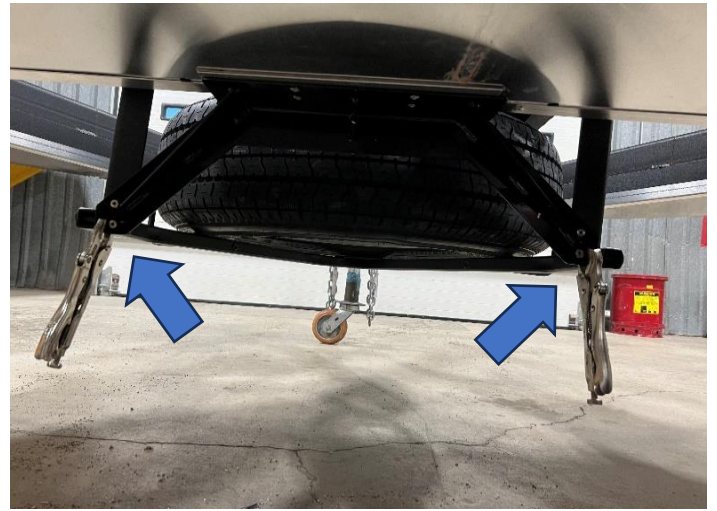
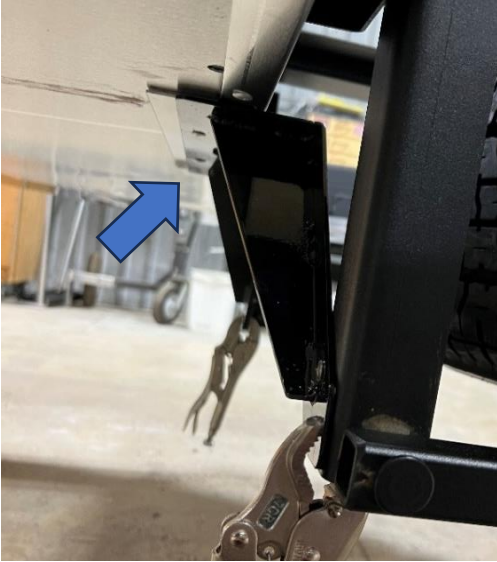
Start by removing the rivets along the trim where the bracket is going to be installed, by drilling them out. This will allow the spacer to sit flush with the trim, once it is installed. Use a #20 (5/32") drill bit to drill out the pop rivets.



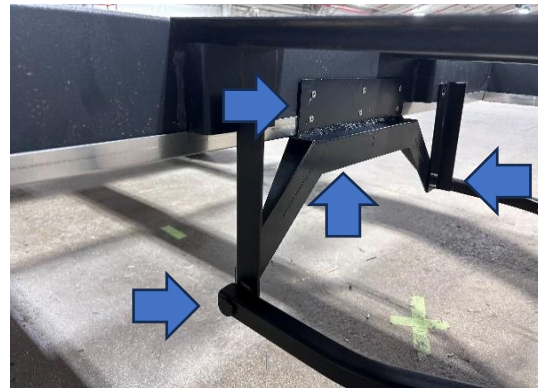
Place a spacer on each side of the L-channel that secures the underbelly to the frame. This will allow the bracket to sit flat against the frame. Attach the spacers using a 12" strip of VHB tape.



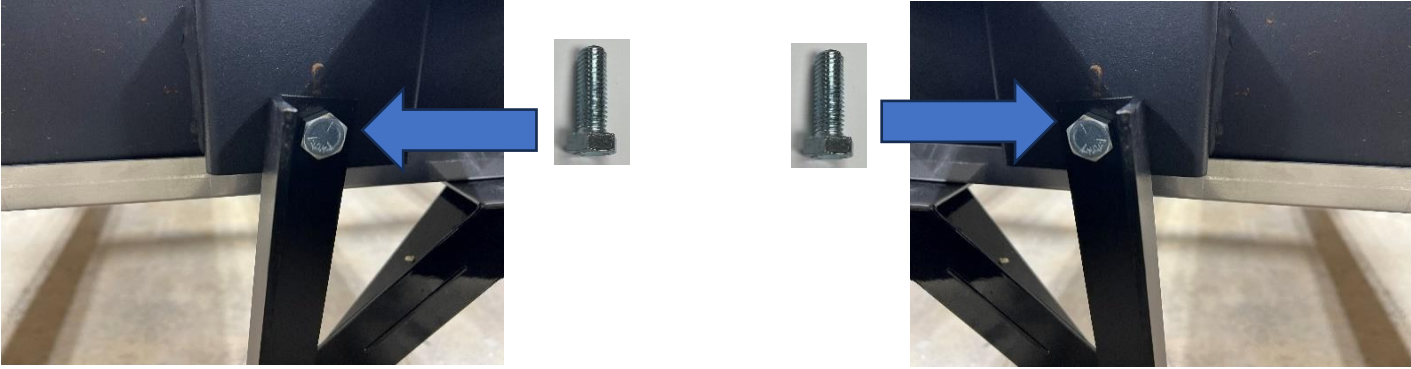
Align the spare tire carrier bracket with the bottom of the chassis and the spare tire carriers arms. Using vice grips, clamp the bracket to the arms to hold it in place.



Using a drill with a #11 (3/16") drill bit, drill out the holes in the top of the bracket and the arms. Use a pop gun to install stainless rivets (part # 330031-03) 2 in each arm, 4 on the bottom side of the bracket, and 6 on the top side of the bracket.



Remove the 13x1-1/2" bolts and replace them with 13x1" bolts. Torque the new bolts to 57 ft/lbs.



After the new bracket has been installed, and the bolts have been replaced, the spare tire can be placed back into the carrier.

