

Rangeline Touring Coach Federal Certification Label Replacement Process

Process:

Clean area with alcohol, place new label over incorrect label.

Equipment needed:

- Alcohol (Preferably denatured alcohol)
- Cloth Rag
- New Labels



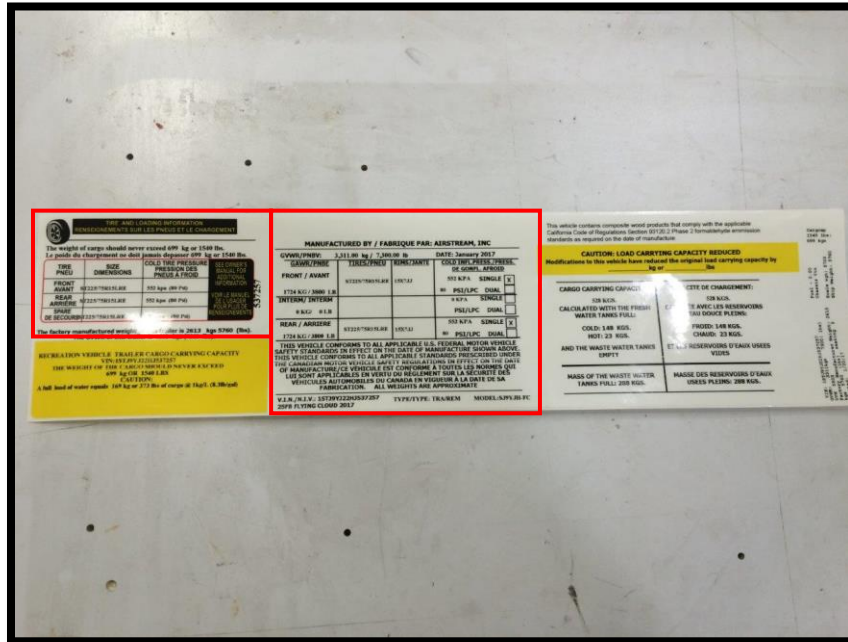
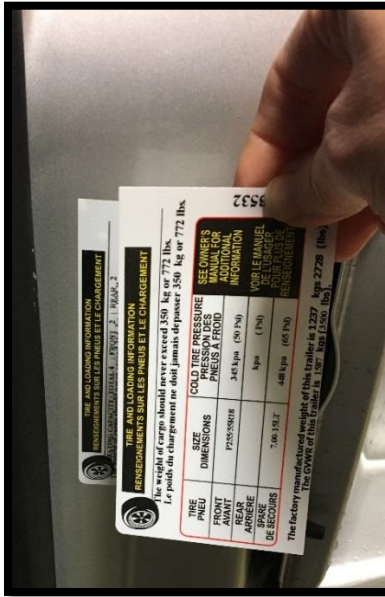
Step 1: Start by locating the labels that need to be changed. They will be located on the driver's side door B-pillar and on the driver's side inner door panel.



Step 2: Wipe directly over the existing labels with denatured alcohol to clean the area.



Step 3: Remove the new “Tire and Loading Information” & “GAWR” labels and place them over the same labels on the vehicle. **You may discard the unused labels.**



Interstate 19, 24 and Atlas Touring Coach Federal Certification Label Replacement Process

Process:

Clean area with alcohol, place new label over incorrect label.

Equipment needed:

- Alcohol (Preferably denatured alcohol)
- Cloth Rag
- New Labels



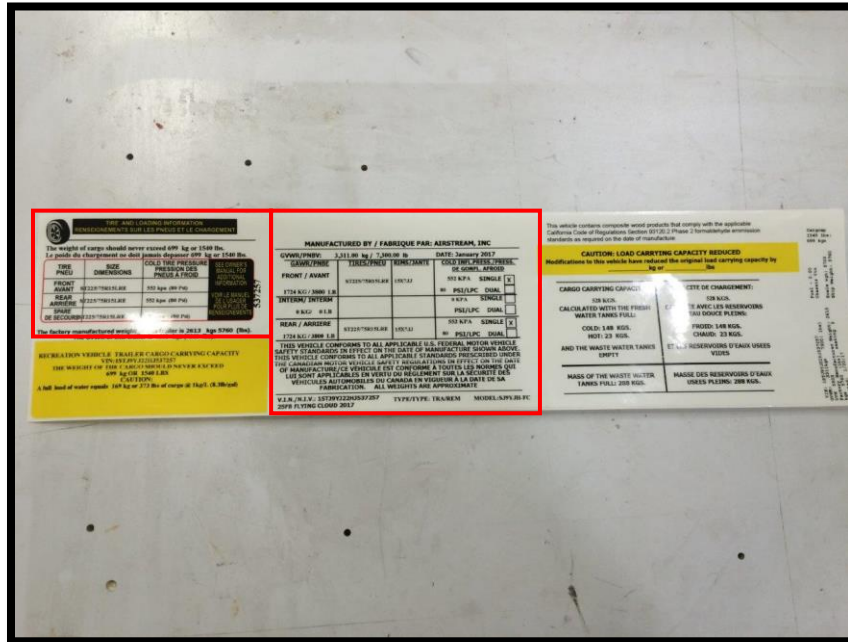
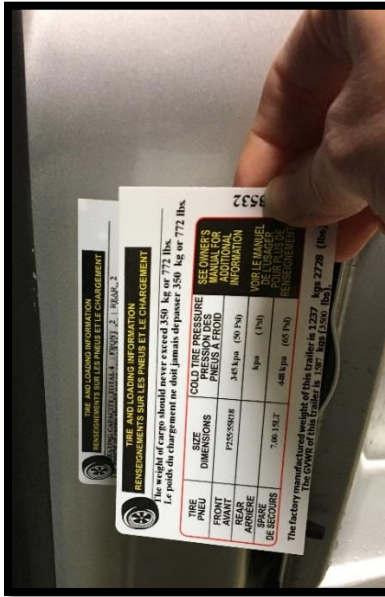
Step 1: Start by locating the labels that need to be changed. They will be located on the driver's side door B-pillar and under the driver's seat adhered to the pedestal.



Step 2: Wipe directly over the existing labels with denatured alcohol to clean the area.



Step 3: Remove the new “Tire and Loading Information” & “GAWR” labels and place them over the same labels on the vehicle. **You may discard the unused labels.**



TIRE AND LOADING INFORMATION
RENSEIGNEMENTS SUR LES PNEUS ET LE CHARGEMENT

The weight of cargo should never exceed 499 kg or 1100 lbs.
Le poids du chargement ne doit jamais dépasser 499 kg ou 1100 lbs.

TIRE / PNEU	SIZE / DIMENSIONS	COLD TIRE PRESSURE / PNEUS À FROID	SEE OWNER'S MANUAL FOR ADDITIONAL INFORMATION / VOIR LE MANUEL D'UTILISATION POUR PLUS DE RENSEIGNEMENTS
FRONT / AVANT	P235/65R16	340 kPa (49 PSI)	
REAR / ARRIÈRE	P235/65R16	340 kPa (49 PSI)	
SPARE / RÉSERVE	16" DIA.	340 kPa (49 PSI)	

The factory manufactured load capacity of this trailer is 1237 kg or 2728 lbs.
La capacité de charge fabriquée de ce remorqueur est de 1237 kg ou 2728 lbs.

MANUFACTURED BY / FABRIQUE PAR: AIRSTREAM, INC.

CONVERSION: 1.210 kg / m³ 7.480 m³ GROSS WEIGHT / POIDS BRUT

FRONT / AVANT	REAR / ARRIÈRE	GROSS TIRE PRESSURE / POIDS BRUT
1776 kg / 3910 LBS	1776 kg / 3910 LBS	340 kPa (49 PSI)
1776 kg / 3910 LBS	1776 kg / 3910 LBS	340 kPa (49 PSI)

THIS VEHICLE COMPLIES TO ALL APPLICABLE U.S. FEDERAL MOTOR VEHICLE SAFETY REGULATIONS IN EFFECT ON THE DATE OF MANUFACTURE OF THIS VEHICLE. THIS VEHICLE COMPLIES TO ALL APPLICABLE U.S. FEDERAL MOTOR VEHICLE SAFETY REGULATIONS IN EFFECT ON THE DATE OF MANUFACTURE OF THIS VEHICLE. THIS VEHICLE COMPLIES TO ALL APPLICABLE U.S. FEDERAL MOTOR VEHICLE SAFETY REGULATIONS IN EFFECT ON THE DATE OF MANUFACTURE OF THIS VEHICLE.

LES VEHICULES CONFORMES A TOUS LES REGLEMENTS FEDERAUX EN VIGUEUR AU MOMENT DE LA FABRICATION. LES VEHICULES CONFORMES A TOUS LES REGLEMENTS FEDERAUX EN VIGUEUR AU MOMENT DE LA FABRICATION. LES VEHICULES CONFORMES A TOUS LES REGLEMENTS FEDERAUX EN VIGUEUR AU MOMENT DE LA FABRICATION.

U.S.A. 16.17.12 12/20/2012 1237 1776/3910 1100/2425 1237 1776/3910 1100/2425

CAUTION: LOAD CARRYING CAPACITY REDUCED
Modifications to this vehicle have reduced the original load carrying capacity by 800 lbs.

CARGO CARRYING CAPACITY / POIDS BRUT
CALCULATED WITH THE FRONT WATER TANKS FULL / CALCULE AVEC LES RESERVOIRS D'EAU PLEINS
COLD 148 KGS / FROID 148 KGS
AND THE WASTE WATER TANKS EMPTY / ET LES RESERVOIRS D'EAUX USEES VIDES

NET RELATION TRAILER TO TRAILER CARRYING CAPACITY / POIDS BRUT DE LA REMORQUEUR A LA CAPACITE DE CHARGEMENT
1100 KGS / 2425 LBS
GROSS WEIGHT OF THIS VEHICLE / POIDS BRUT DE CE VEHICULE
1776 KGS / 3910 LBS
A full load of water equals 148 kg or 327 lbs of weight at 15.0 psi cold water pressure.

U.S.A. 16.17.12 12/20/2012 1237 1776/3910 1100/2425

Interstate 24X Touring Coach Federal Certification Label Replacement Process

Process:

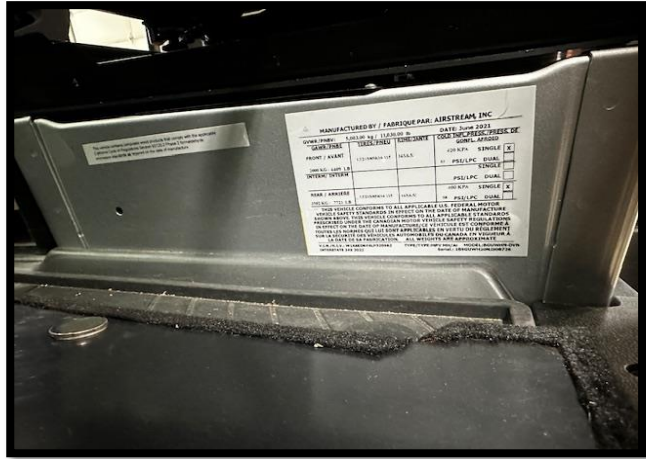
Clean area with alcohol, place new label over incorrect label.

Equipment needed:

- Alcohol (Preferably denatured alcohol)
- Cloth Rag
- New Labels



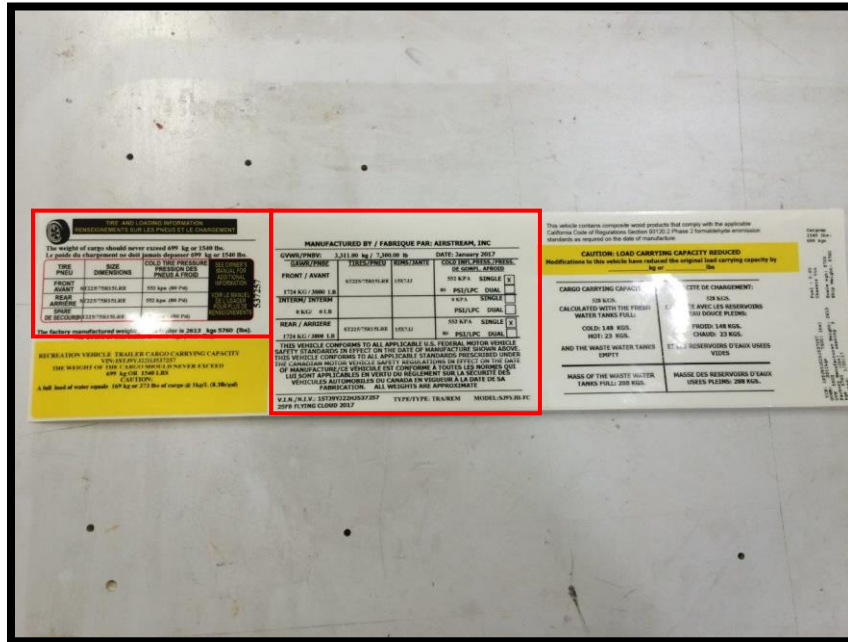
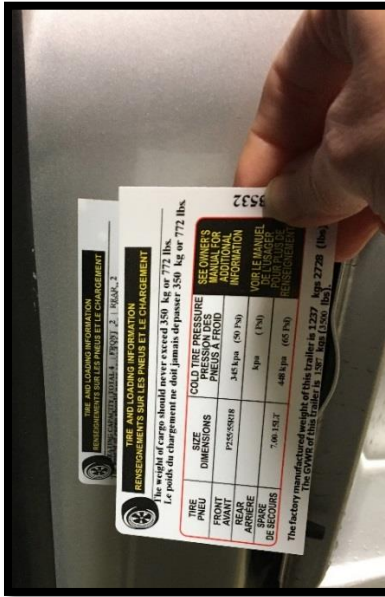
Step 1: Start by locating the labels that need to be changed. They will be located on the driver's side door B-pillar and under the driver's seat adhered to the pedestal.



Step 2: Wipe directly over the existing labels with denatured alcohol to clean the area.



Step 3: Remove the new “Tire and Loading Information” & “GAWR” labels and place them over the same labels on the vehicle. **You may discard the unused labels.**



Note: During the production of the Interstate 24X, various wheel models/wheel dimensions were utilized. Because of this, you may receive (2) separate Federal Certification Labels. One of these labels will contain information relevant to your vehicle's wheel dimensions. **To determine the correct label please use the reference guide provided below. Once you've identified your wheel type, select the label with the dimensions that matches the wheel type listed below.**

Vision – 16x5.5J



Method – 16x5.5J



Stock Mercedes-Benz (Raptor Coated) 16x5.5J



Voxx (GFX) – 16x6J



Ultra – 16x6J

