

REFERENCE:	Nova Bus Manuals
SECTION:	12: Passenger Seats
RS N°:	MQR 7621-2570
EFFECTIVE IN PROD.:	N/A
TC RECALL N°:	–
NHTSA RECALL N°:	23V714

APPLICATION DEADLINES: N/A CLAIM  
REFERENCE NUMBER: SR5500

SUBJECT:	Rear wheel well passenger seats
JUSTIFICATION:	Affected vehicles with the seat attachment points may fail due to improper installation. In the event that the seat attachment points were not correctly installed, the seat may detach from the frame, which may inadequately restrain a passenger during a crash, increasing the risk of injury.

LEVEL	DESCRIPTION	DIRECT CHARGES		TIME
		LABOUR	MATERIAL	
1	Inspect rear wheel well seats.	Nova Bus	–	10 min
2	–	–	–	–

#### MATERIAL REQUIRED PER VEHICLE

QTY	PART N°	REV.	DESCRIPTION
<b>LEVEL 1</b>			
–	–	–	–
<b>LEVEL 2</b>			
–	–	–	–

#### DISPOSAL OF PARTS

REMOVED PARTS ARE:	DISCARDED	RETAINED
	–	–

#### REVISION HISTORY

REV.	DATE	CHANGE DESCRIPTION	WRITTEN BY
NR	2023DE06	Initial release	Luc Carignan

APPROVED BY:  
NQF705003 VERSION 5

Irina  
Negoescu  
Signature  
numérique de  
Irina Negoescu  
Date : 2023.12.06  
14:48:04 -05'00'

CLIENT	ORDER	ROAD NUMBER		VIN (2NVY/4RKY...)		QTY
		FROM	TO	FROM	TO	
New York City Transit - NYCT - New York	L841	8103	8134	L82J4F450	L82JXF450	32
New York City Transit - NYCT - New York	L841	8184	8206	L82J1F450	L82J0F450	23
New York City Transit - NYCT - New York	L841	8252	8269	L82J2F450	L82J2F450	18
New York City Transit - NYCT - New York	L842	8207	8213	L82J6F450	L82J7F450	7
New York City Transit - NYCT - New York	L842	8318	8332	L82J9F450	L82J7F450	15
New York City Transit - NYCT - New York	L842	8359	8362	L82J9F450	L82J4F450	4
New York City Transit - NYCT - New York	L842	8399	8400	L82J6F450	L82J8F450	2
New York City Transit - NYCT - New York	L842	8408	8408	L82J2F450	L82J2F450	1
New York City Transit - NYCT - New York	L842	8412	8413	L82J0F450	L82J2F450	2
New York City Transit - NYCT - New York	L842	8419	8419	L82J8F450	L82J8F450	1
New York City Transit - NYCT - New York	L842	8421	8421	L82J3F450	L82J3F450	1
New York City Transit - NYCT - New York	L842	8428	8428	L82J0F450	L82J0F450	1
New York City Transit - NYCT - New York	L842	8431	8431	L82J6F450	L82J6F450	1
New York City Transit - NYCT - New York	L842	8432	8432	L82JXF450	L82JXF450	1
New York City Transit - NYCT - New York	L842	8481	8485	L82J1F450	L82J7F450	5
New York City Transit - NYCT - New York	L843	8135	8153	L82J5F450	L82J9F450	19
New York City Transit - NYCT - New York	L843	8214	8230	L82J9F450	L82J1F450	17
New York City Transit - NYCT - New York	L843	8270	8293	L82J0F450	L82J7F450	24
New York City Transit - NYCT - New York	L843	8333	8347	L82J9F450	L82J1G977	15
New York City Transit - NYCT - New York	L844	8154	8170	L82J6G977	L82J0G977	17
New York City Transit - NYCT - New York	L844	8231	8251	L82J2G977	L82J8G977	21
New York City Transit - NYCT - New York	L844	8387	8387	L82J6G977	L82J6G977	1
New York City Transit - NYCT - New York	L844	8443	8443	L82J2G977	L82J2G977	1
New York City Transit - NYCT - New York	L845	8171	8183	L82J2G977	L82J9G977	13
New York City Transit - NYCT - New York	L845	8294	8317	L82J0G977	L82J6G977	24
New York City Transit - NYCT - New York	L845	8348	8356	L82J8G977	L82J7G977	9
New York City Transit - NYCT - New York	L845	8358	8358	L82J0G977	L82J0G977	1
New York City Transit - NYCT - New York	L845	8395	8395	L82J8G977	L82J8G977	1
New York City Transit - NYCT - New York	L845	8462	8462	L82J4G977	L82J4G977	1
New York City Transit - NYCT - New York	L845	8478	8478	L82J2G977	L82J2G977	1
New York City Transit - NYCT - New York	L845	8480	8480	L82J6G977	L82J6G977	1
New York City Transit - NYCT - New York	LA23	5485	5530	S92J5J977	S92J6J977	46
New York City Transit - NYCT - New York	LA76	8530	8530	L82J0K977	L82J0K977	1
New York City Transit - NYCT - New York	LA76	8553	8553	L82J2K977	L82J2K977	1
New York City Transit - NYCT - New York	LA76	8562	8562	L82J9K977	L82J9K977	1
New York City Transit - NYCT - New York	LA76	8569	8569	L82J8K977	L82J8K977	1
New York City Transit - NYCT - New York	LA76	8573	8613	L82J5K977	L82J2K977	41
New York City Transit - NYCT - New York	LA76	8615	8615	L82J6K977	L82J6K977	1
New York City Transit - NYCT - New York	LA76	8617	8618	L82JXK977	L82J1K977	2
New York City Transit - NYCT - New York	LA76	8621	8623	L82J1K977	L82J5K977	3
New York City Transit - NYCT - New York	LA76	8625	8625	L82J9K977	L82J9K977	1
New York City Transit - NYCT - New York	LA76	8628	8628	L82J4K977	L82J4K977	1
New York City Transit - NYCT - New York	LB29	5539	5540	S92J3J977	S92J5J977	2

CLIENT	ORDER	ROAD NUMBER		VIN (2NVY/4RKY...)		QTY
		FROM	TO	FROM	TO	
New York City Transit - NYCT - New York	LB29	5543	5543	S92J0J977	S92J0J977	1
New York City Transit - NYCT - New York	LB29	5546	5549	S92J6J977	S92J5J977	4
New York City Transit - NYCT - New York	LB29	5553	5553	S92J2J977	S92J2J977	1
New York City Transit - NYCT - New York	LB29	5555	5556	S92J6J977	S92J2J977	2
New York City Transit - NYCT - New York	LB29	5558	5558	S92J1J977	S92J1J977	1
New York City Transit - NYCT - New York	LB29	5560	5560	S92J5J977	S92J5J977	1
New York City Transit - NYCT - New York	LB29	5563	5563	S92J0J977	S92J0J977	1
New York City Transit - NYCT - New York	LB29	5565	5565	S92J4J977	S92J4J977	1
New York City Transit - NYCT - New York	LB59	5444	5468	S92J7H977	S92J6H977	25
New York City Transit - NYCT - New York	LB59	5473	5473	S92J1H977	S92J1H977	1
New York City Transit - NYCT - New York	LB59	5476	5477	S92J1H977	S92J3H977	2
New York City Transit - NYCT - New York	LB59	5479	5480	S92J7H977	S92J9H977	2
New York City Transit - NYCT - New York	LB59	5482	5484	S92J2H977	S92J6H977	3
New York City Transit - NYCT - New York	LB99	5567	5567	S92J2J977	S92J2J977	1
New York City Transit - NYCT - New York	LB99	5569	5571	S92J6J977	S92JXJ977	3
New York City Transit - NYCT - New York	LB99	5573	5573	S92J0J977	S92J0J977	1
New York City Transit - NYCT - New York	LB99	5576	5576	S92J0J977	S92J0J977	1
New York City Transit - NYCT - New York	LB99	5577	5577	S92J1J977	S92J1J977	1
New York City Transit - NYCT - New York	LB99	5579	5602	S92J5J977	S92J5K977	24
New York City Transit - NYCT - New York	LC32	8636	8636	L82J3K977	L82J3K977	1
New York City Transit - NYCT - New York	LC32	8664	8664	L82J8K977	L82J8K977	1
New York City Transit - NYCT - New York	LC32	8668	8668	L82J5K977	L82J5K977	1
New York City Transit - NYCT - New York	LC32	8677	8677	L82J6K977	L82J6K977	1
New York City Transit - NYCT - New York	LC32	8694	8731	L82J2K977	L82J8K977	38
New York City Transit - NYCT - New York	LC32	8733	8734	L82J1K977	L82J3K977	2
New York City Transit - NYCT - New York	LC32	8737	8738	L82J9K977	L82J0K977	2
New York City Transit - NYCT - New York	LC32	8740	8742	L82JXK977	L82J3K977	3
New York City Transit - NYCT - New York	LC32	8744	8746	L82J1K977	L82J5K977	3
New York City Transit - NYCT - New York	LC32	8748	8749	L82J9K977	L82J0K977	2
New York City Transit - NYCT - New York	LC32	8751	8751	L82JXK977	L82JXK977	1
New York City Transit - NYCT - New York	LC32	8753	8754	L82J3K977	L82J5K977	2

**WARNING**

FOLLOW YOUR INTERNAL SAFETY PROCEDURES.

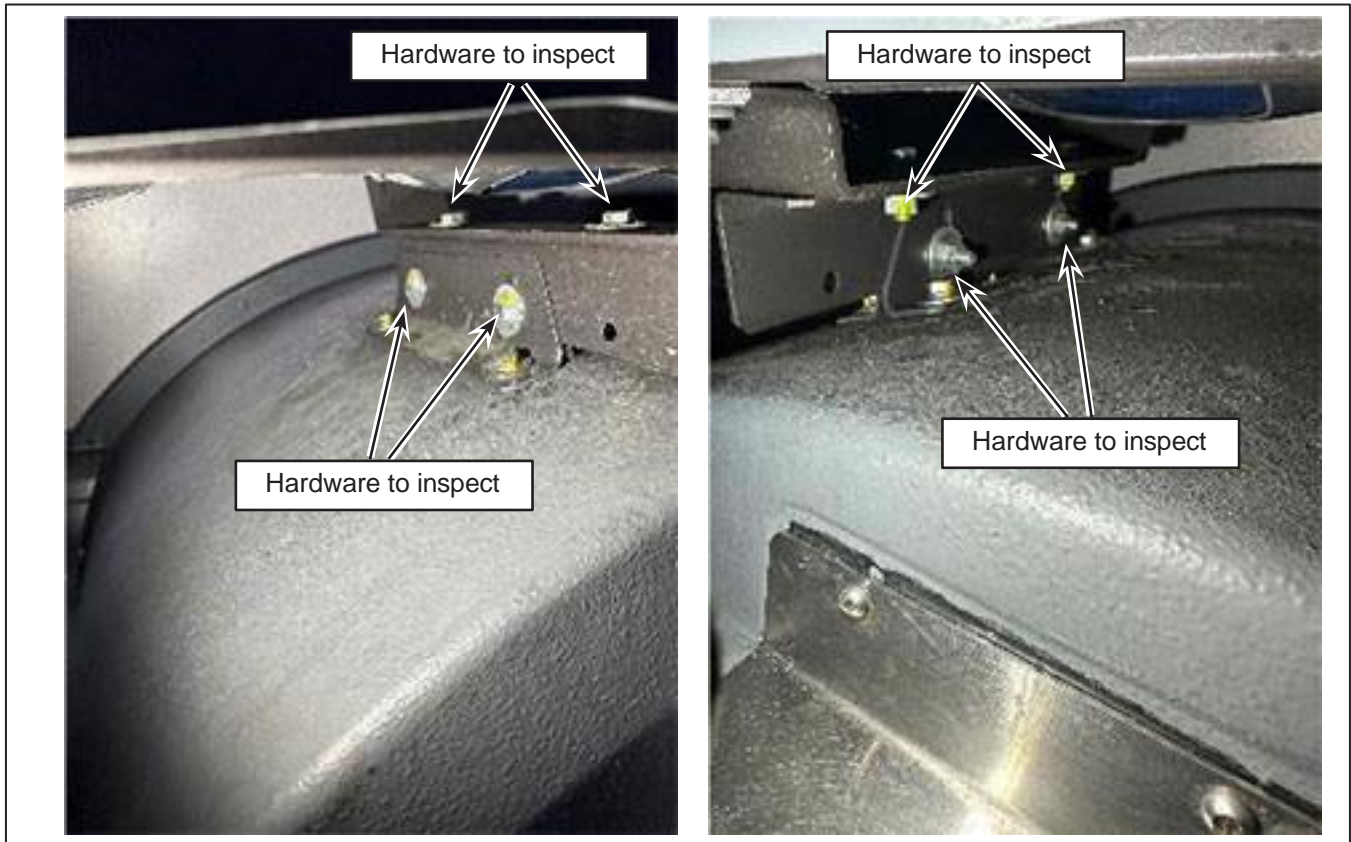
## PROCEDURE

- 1.1. Park the vehicle on an even surface with the transmission on neutral.
- 1.2. Apply the parking brake and set the master control switch to the **stop** position.
- 1.3. Perform a visual inspection of the seats located at the rear wheel well, shown in Figure 1.
- 1.4. Using your hands begin with a shake test of the seats, there should be no excess play or easy movement. The seats should sit snugly on the frame. If you feel the seats are noticeably loose, the vehicle should not return to service.



*Figure 1 - Rear Wheel Well Seats to Inspect*

- 1.5. Perform a visual inspection of both rear wheel well seats brackets hardware. See Figure 2 for the hardware to inspect.
- a. Check for any obvious loosen hardware, broken hardware, popped-out hardware, missing hardware or broken torque seal. If one of the seats brackets has one of those defects, the vehicle should not return to service.



*Figure 2 - Rear Wheel Well Seats Brackets Hardware*



- 1.6. Perform a visual inspection of both rear wheel well seat rail hardware. Inspect front and rear seats rail hardware. See Figure 3 for the hardware to inspect.
  - a. Check for any obvious loosen hardware, broken hardware, popped-out hardware, missing hardware or broken torque seal. If one of the seats has one of those defects, the vehicle should not return to service.

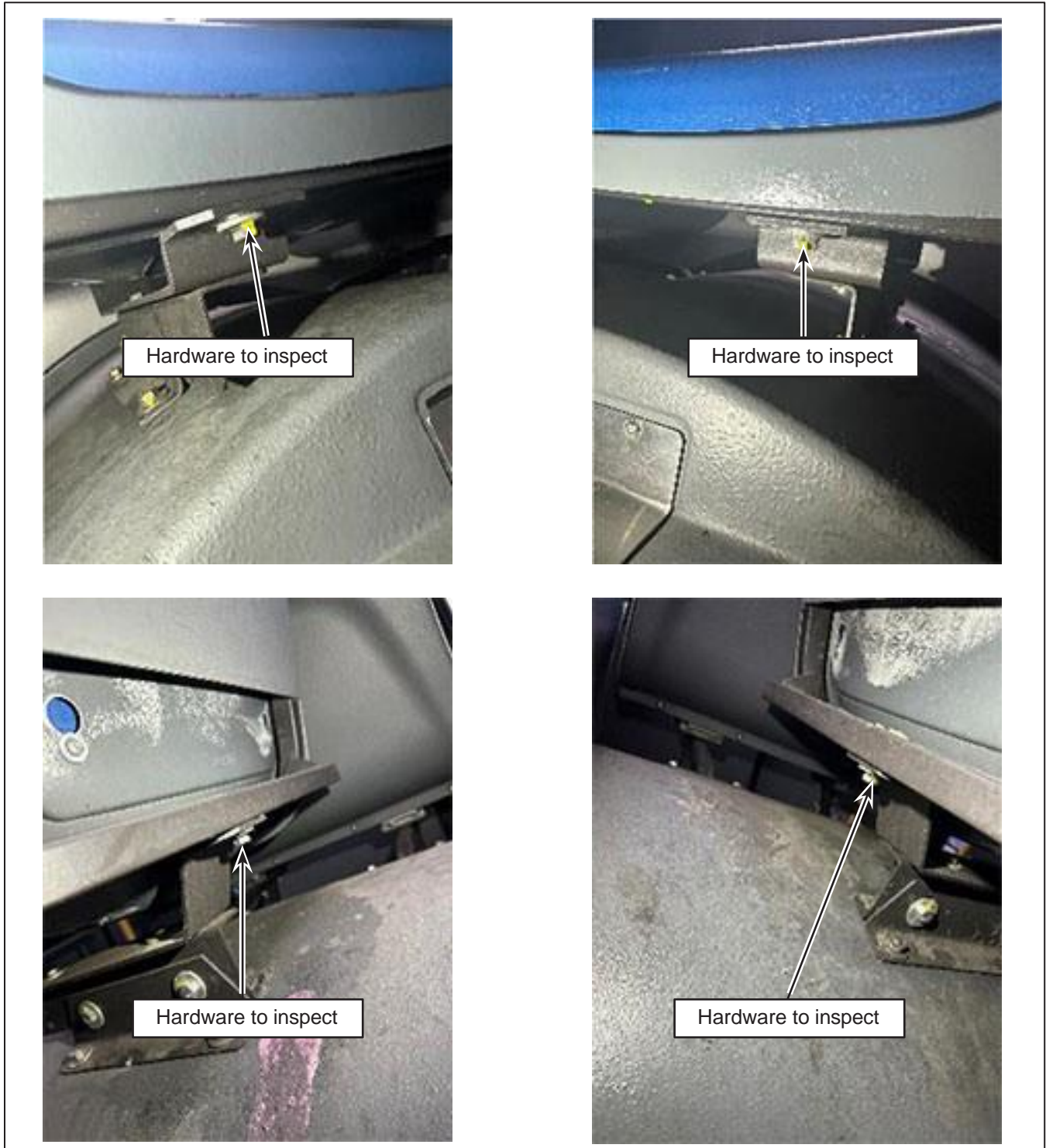


Figure 3 - Rear Wheel Well Seats Rail Hardware

- 1.7. Perform a visual inspection of both rear wheel well seat rail track nuts and track nuts hardware. Inspect front and rear seats track nuts. See Figure 4 for the hardware to inspect.
- a. Check if the track nuts are sitting properly in the rail. The track nuts should make a flush contact with both sides of the rail. Any obvious signs of misalignment of the track nut, loosen hardware, broken hardware, popped-out hardware or missing hardware. If one of the seats has one of those defects, the vehicles should not return to service.

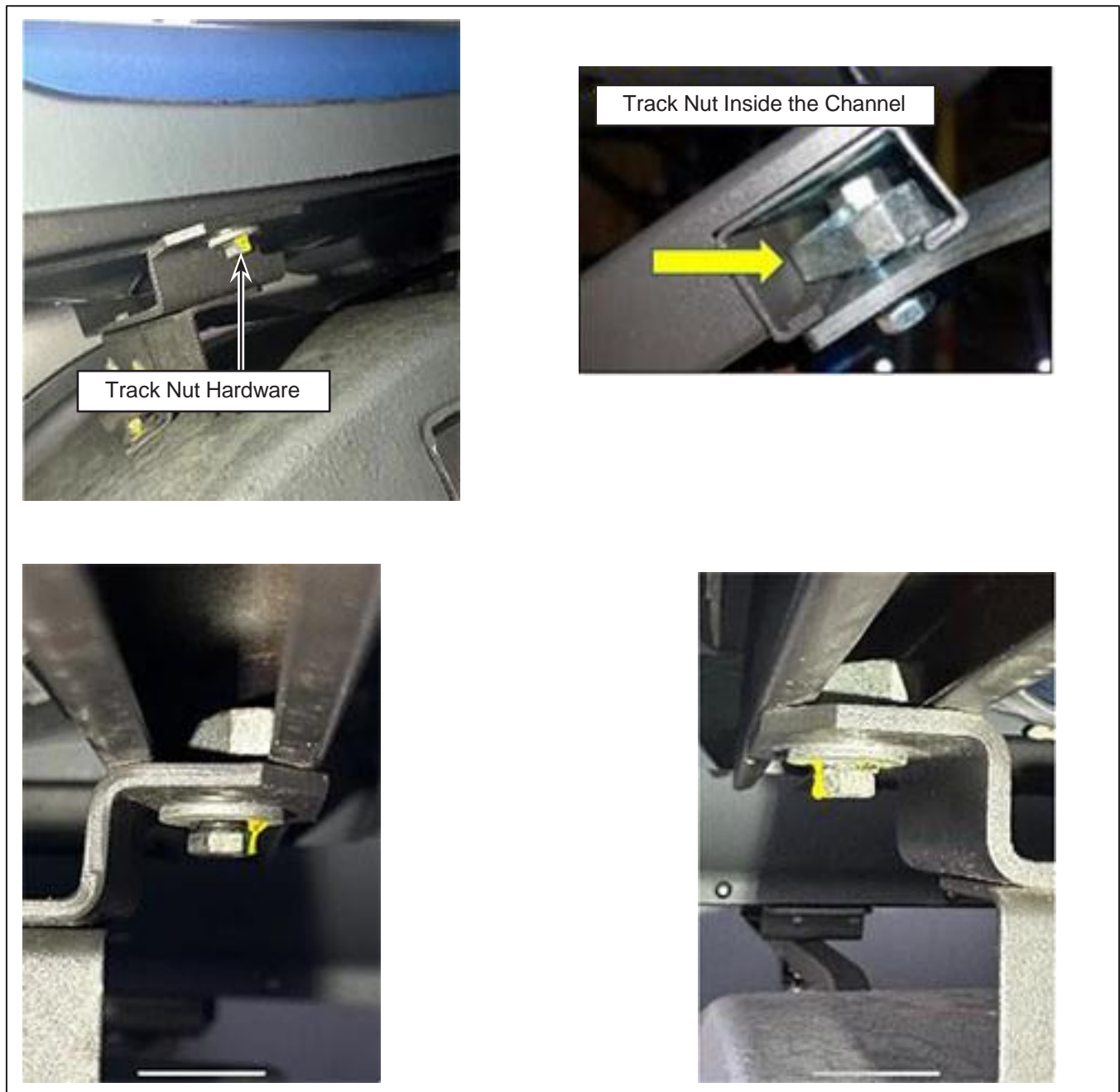


Figure 4 - Rear Wheel Well Seats Track Nut and Track Nut Hardware