

AIRSTREAM®

428 W. Pike St., Jackson Center, OH 45334

IMPORTANT SAFETY RECALL

Airstream Basecamp 16' & 20' Travel Trailer

NHTSA 23V-614/Transport Canada 2023-499

Operation Code: **TTSBR8920100**

Labor rate will be: **.50 hrs.**

Basecamp Air Conditioner Prep Wire

It has come to our attention that certain model year 2021-2023 Basecamp 16' & 20' travel trailers manufactured without the optional roof mounted air conditioner, were manufactured with a 12-gauge wire which is intended for future installation of a roof mounted air conditioner. This wire was capped using a Wago connector, but not terminated inside of a junction box. Because the wire was connected to the circuit breaker, and if the Wago connector were to separate from the wire, there may be a potential for a "hot skin" scenario. This could increase the risk of personal injury and/or property damage. The solution is to remove the wire from the circuit breaker in the power center, insulate the exposed end of the 12-gauge wire with electrical tape & coil it neatly behind the power center.

Please contact the Airstream Customer Service office at 877-344-1076 ext. 7491 or support@airstream.com if you have any questions.

RANGE OF VEHICLES INVOLVED:

Airstream Basecamp 16' & 20' travel trailers **manufactured without an air conditioner** between:

January 1, 2021, to January 5, 2023

Serial number range:

204855-208846

Serial number range: We have attached the vin number list on the back of this bulletin.

Note: Because our VINs do not run in a contiguous series, there will be units in the VIN range which will not be affected by this Service Bulletin.

Equipment needed:

Power driver

Torque screwdriver in inch pounds

#2 square bit

Phillips bit

Electrical tape



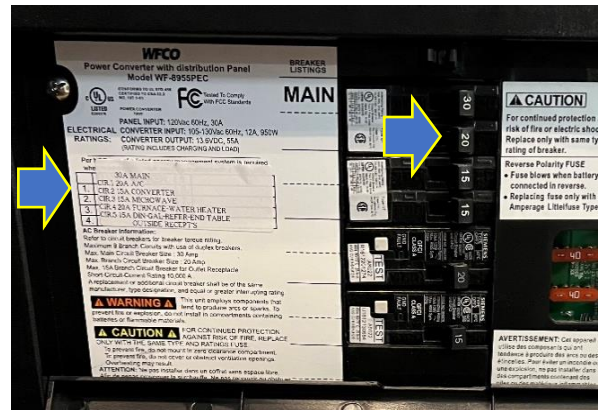
Parts Needed:



WARNING: Before working on the travel trailer, make sure the trailer is turned off and all power is disconnected.

Start by opening the power center by pushing in at the top center of the door, to release the latch.

locate the A/C breaker and note its circuit. The breakers are listed on the sticker to the left of the breakers.



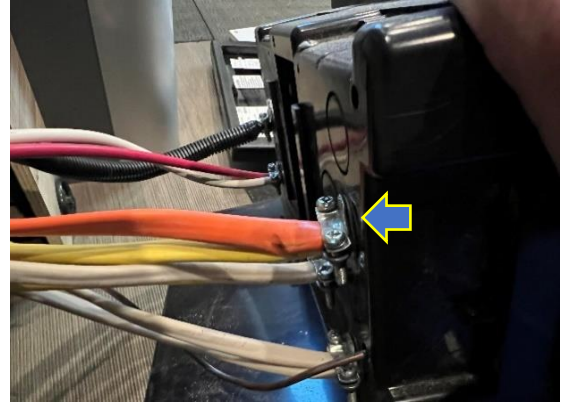
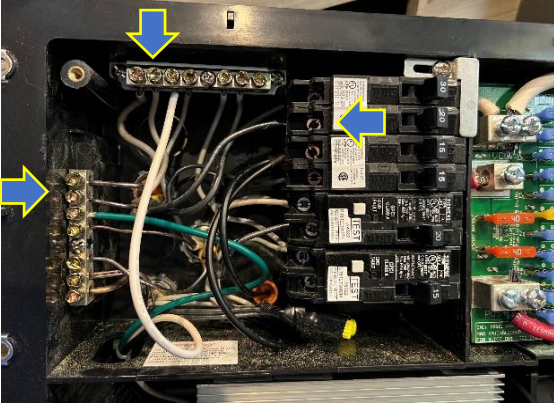
Remove the two screws securing the cover.

With the cover detached, remove the mounting screws to pull the power center from the cabinet.

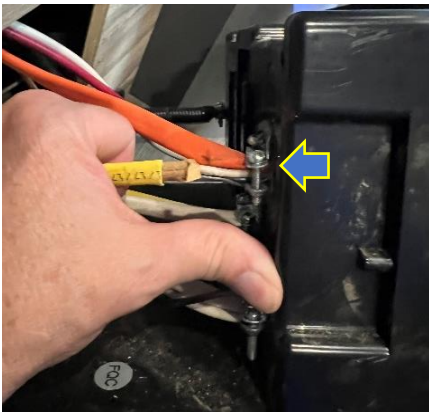


Using a #2 square bit screw driver, loosen the screw and remove the black wire for the A/C breaker. Trace the black wire back to where it comes out of the Romex wire. Using the same screw driver, loosen the screws and remove the white and ground wires to the same Romex wire.

On the back of the power center, loosen the wire clamp to the Romex wire for the A/C.

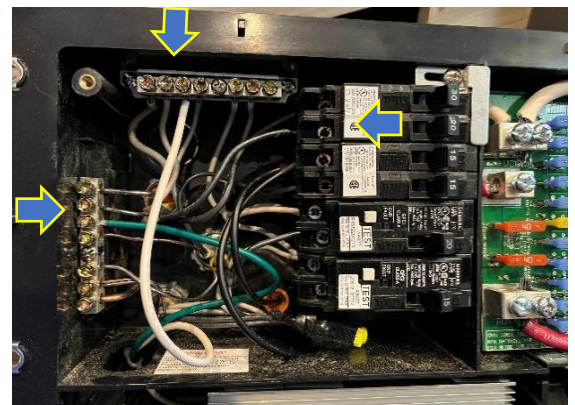
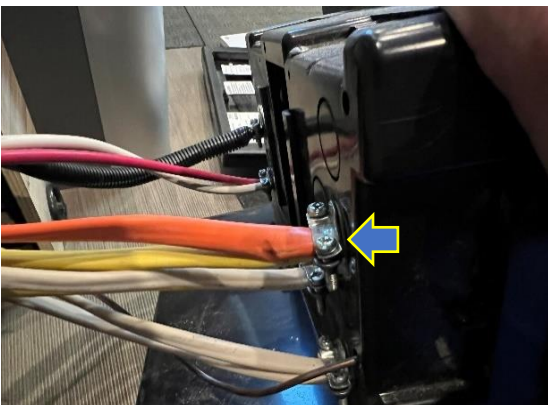


Pull the Romex wire for the A/C out of the power center and tape the end of the wires. Coil the wire up behind the power center.

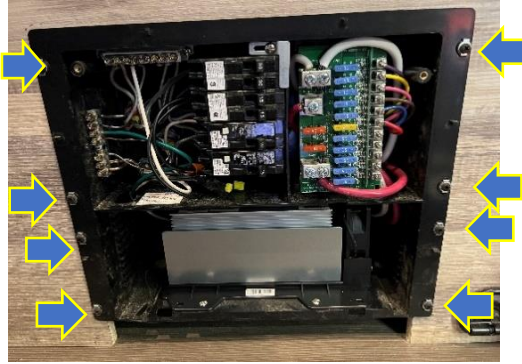


After the wire has been removed, retighten the wire clamp on the back of the power center.

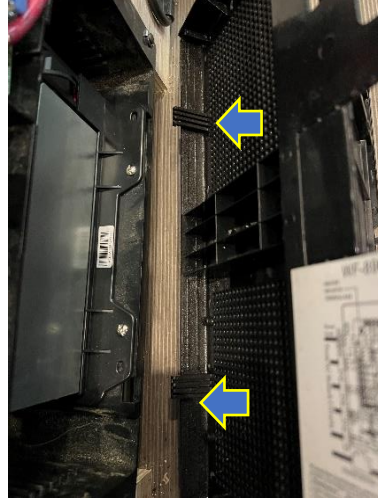
Retighten the three clamp screws to 20 inch pounds, using an inch pound torquing screwdriver and a #2 square screw bit.



Install the power center back into the cabinet using the same screws that were removed.



Line the two tabs up at the bottom of the cover to align it with the power center.



Reinstall the two screws that secure the cover to the power center.

