

SAFETY RECALL

Mack Trucks Inc.
Greensboro, NC USA



Date	Number	Release	Page
09.2023	SC0446	01	1(14)

Mack LR Passenger Seat Pedestal LR

RECALL INFORMATION

(September 2023)

Mack Trucks has determined that certain 2024 model year LR vehicles could be missing floor welds on the right-hand seat pedestal. Missing floor welds on the right-hand side seat would reduce floor strength which in the event of a crash, the passenger seat pedestal may not meet design requirements.

Mack Trucks has not received any complaints or reports of vehicle crashes because of this safety issue; therefore, Mack considers this as a proactive measure to protect the public and Mack's customers from the potential risk associated with this defect.

To ensure that these vehicles meet Mack's stringent quality requirements, follow the instructions outlined below to inspect passenger side seat reinforcement welds, and spot weld reinforcement plate as needed.

VEHICLES AFFECTED

Certain Mack LR Vehicles manufactured between May 2, 2023, and May 19, 2023.

VEHICLE QUANTITY

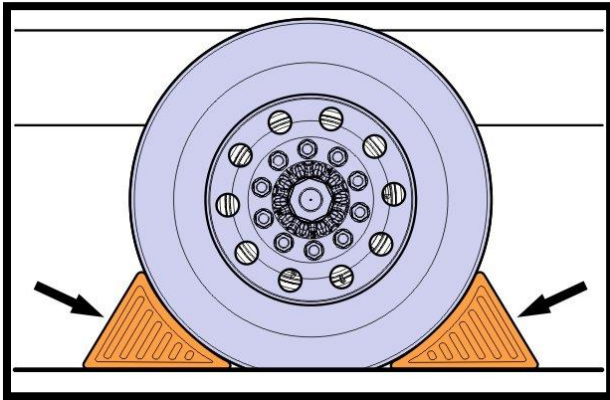
There are 19 vehicles affected by this recall. (19 US, 0 CAN)

Parts

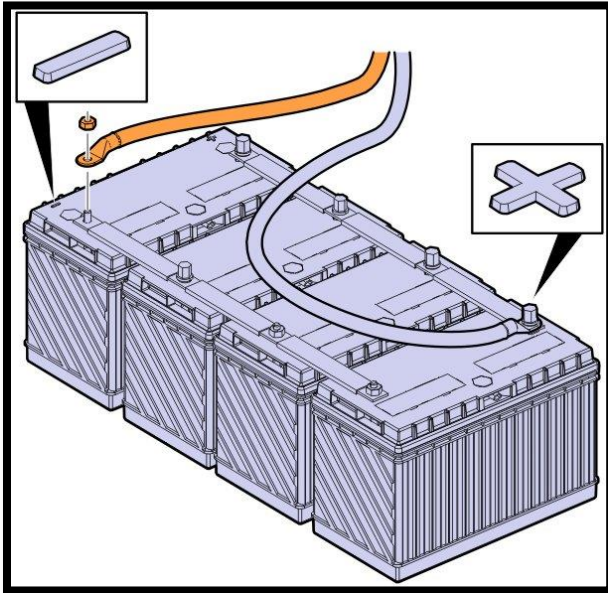
Part Number	Part Description	Quantity
85142725	Paint and Materials	As needed
23745957	Anti-Skid, Right Side	As needed
84198625	Anti-Skid, Right Side	As needed

Repair Instructions

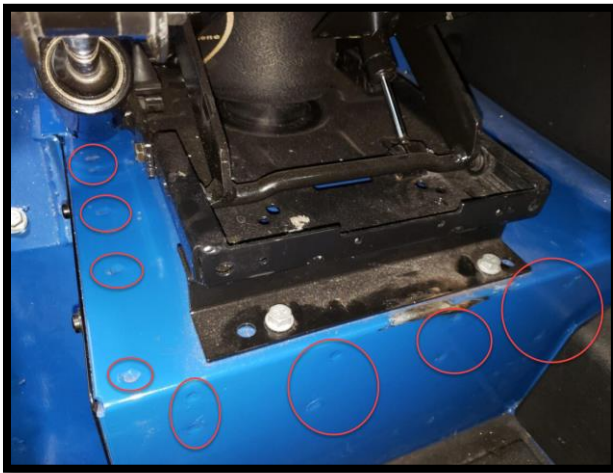
1. Secure Vehicle for Service.
2. Apply the parking brake.
3. Place the transmission in neutral or park.
4. Install the wheel chocks.



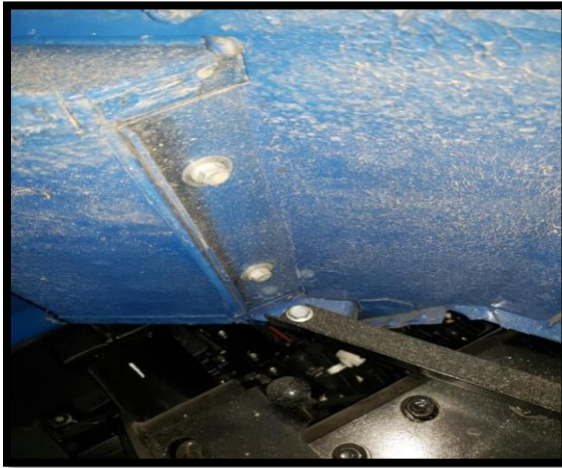
5. Disconnect the cable from the battery's negative terminal.



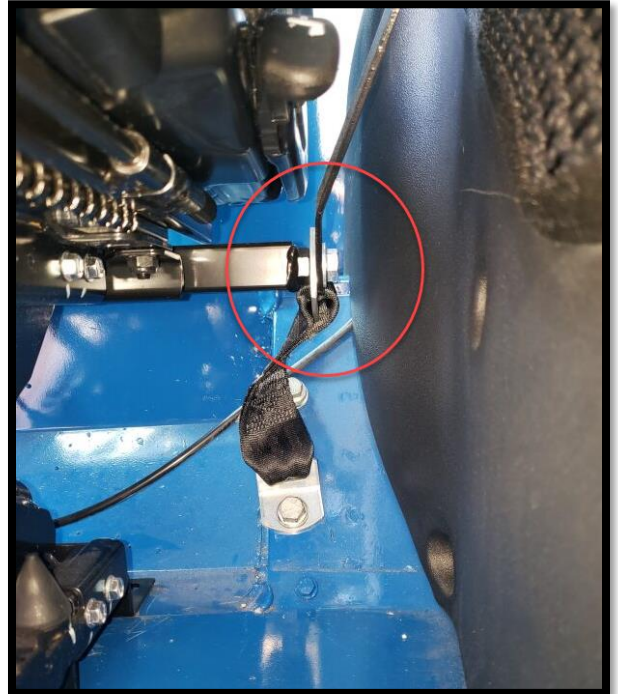
6. Inspect the passenger side seat pedestal for reinforcement welds. You should see indentations where the sheet metal has been spot welded together. (See image below)
 - a. If spot welds are visible, then no action is needed. (Continue to step 29)
 - b. If no spot welds are visible, then continue to step 7.



7. Remove the 4 bolts securing the passenger seat to the pedestal.



8. Remove the bolts securing the seat belt tethers to the seat

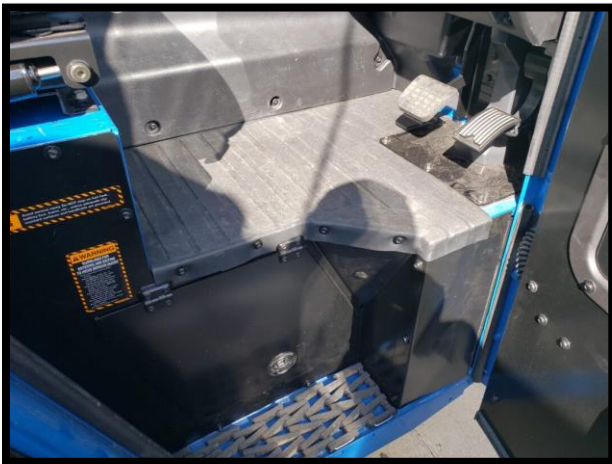


9. Slide the seat forward and disconnect the air line.



10. Remove the seat.

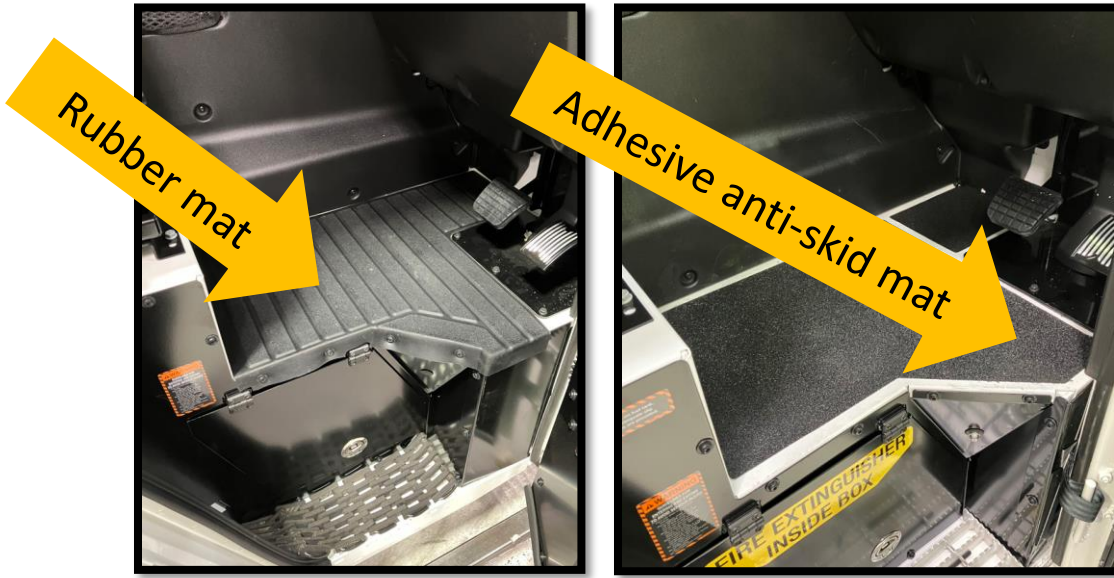
11. Remove the screws securing the side panels and remove the panels.



12. Remove the floor mat. (Two Options)

a. Rubber mat

b. Adhesive Anti-skid mat. (This option will require you to pill off and order a new one after repair is completed).



13. There is a total of 18 holes to drill and weld.

14. Mark the 9 holes on top of the seat pedestal with a marker or center punch.

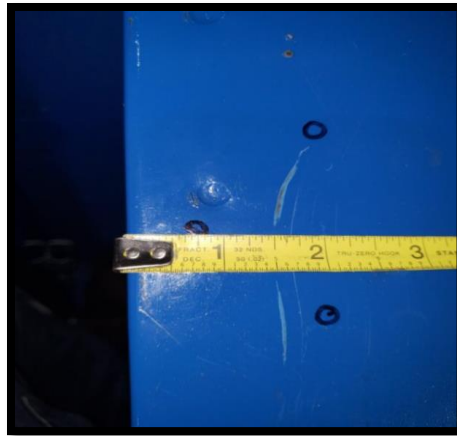
- a. Start from the outside edge and measure over 2 inches and make a mark, Start from the front edge mark 4 holes at 2 ¼, 4 1/2, 7, 9 ¼ inches.



- b. Start from the outside edge and measure over 12 ¾ inches and make a mark, Start from the front edge mark 4 holes at 2 ¼, 4 1/2, 7, 9 ¼ inches.



- c. Start from the outside edge and measure over $\frac{3}{4}$ inches and make a mark, start from the front edge mark a hole at $3\frac{1}{2}$ inches.



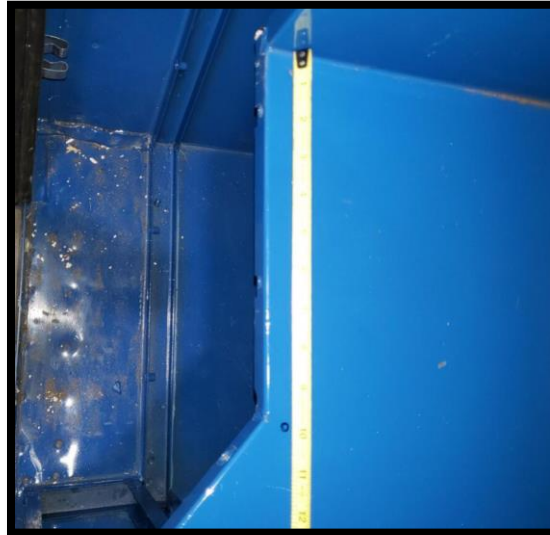
15. Mark the 8 holes on front side of the seat pedestal with a marker or center punch.

- a. Start from the top edge and measure down $\frac{3}{4}$ inches and make a mark, start from the outside edge mark 4 holes at $2\frac{1}{4}$, $5\frac{1}{2}$, $8\frac{3}{4}$, and 12 inches.
- b. Start from the top edge and measure down $1\frac{3}{4}$ inches and make a mark, start from the outside edge mark 4 holes at $2\frac{1}{4}$, $5\frac{1}{2}$, $8\frac{3}{4}$, and 12 inches.



16. Mark 1 hole on the floor of the cab with a marker or center punch.

- a. Start from the face of the seat pedestal and measure towards the front of the truck, make a mark at 10 inches. Measure over $\frac{3}{4}$ of an inch and make a mark.



Important Note!

For any questions regarding the measurements or weld locations, contact the campaign mailbox at campaign@volvo.com

17. Drill out the 18 marked holes using 3/8 spot weld cutter bit or equivalent. (Only drill through the first piece of sheet metal)



Required material

3/8 Spot weld cutter bit or equivalent.



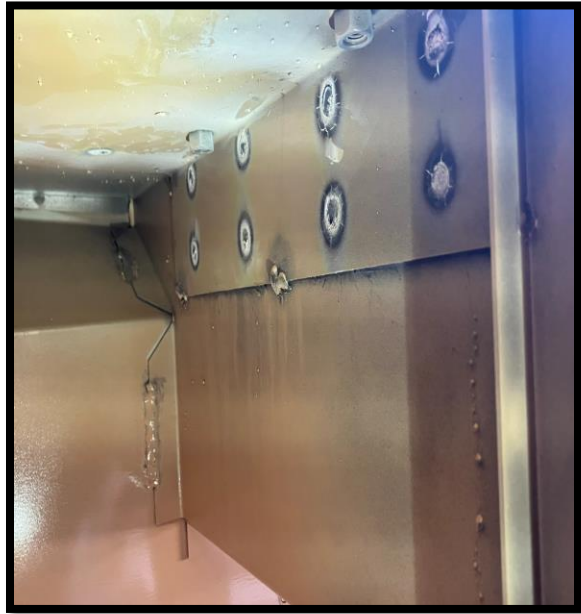
Important note!

Only drill through the first piece (top) of sheet metal.

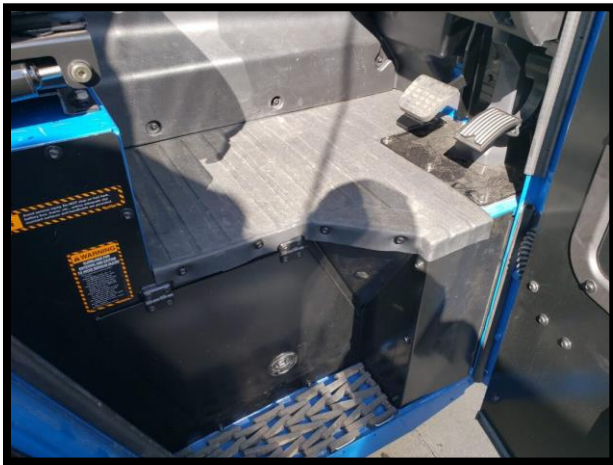
18. Plug weld the 18 previously drilled holes. Using a Mig or Tig welder filling the holes slightly above level.



19. Surface/grind and prep the 18 welded holes so they are flat and ready for paint making sure to get the under compartment.



20. Clean and prep pedestal, floor, and under compartment for paint.
21. Find the paint code on the door jam to order the correct paint.
22. Paint the pedestal, floor, and under compartment. (**Sublet optional**)
23. Reinstall the side panels.
24. Install the mounting screws.



Tightening torque	
panel, screw	3.4 ±0.6 Nm (30 ±5 lb _f -in)

25. Install floor mat.
 - a. **Rubber mat.** (install when installing the side cover).
 - b. **Adhesive Anti-skid mat.** (Install new mats **23745957** and **84198625**)
26. Install the passenger side seat and securing hardware.

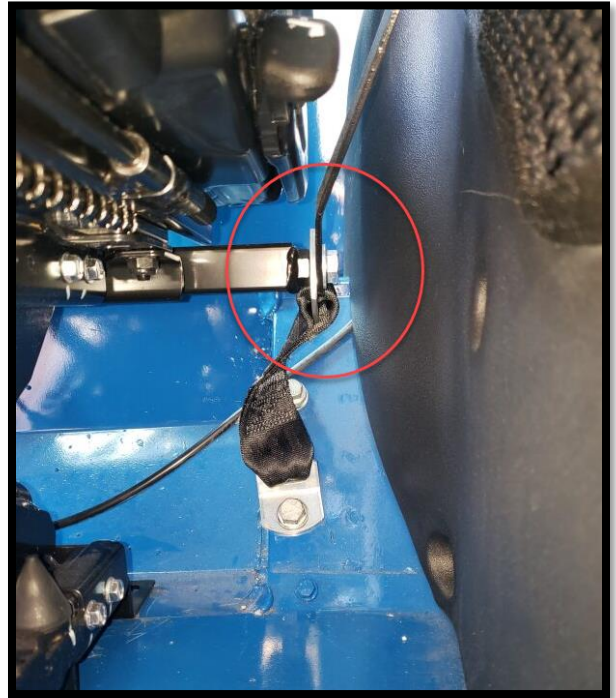


Tightening torque	
Seat, screw	30 Nm- (22 lb _r -ft)

27. Connect the air line.

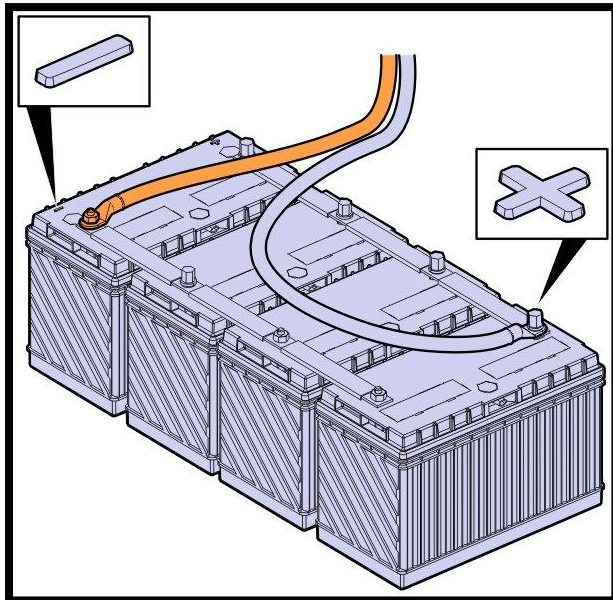


28. Install the bolts securing the seat belt tethers to the seat

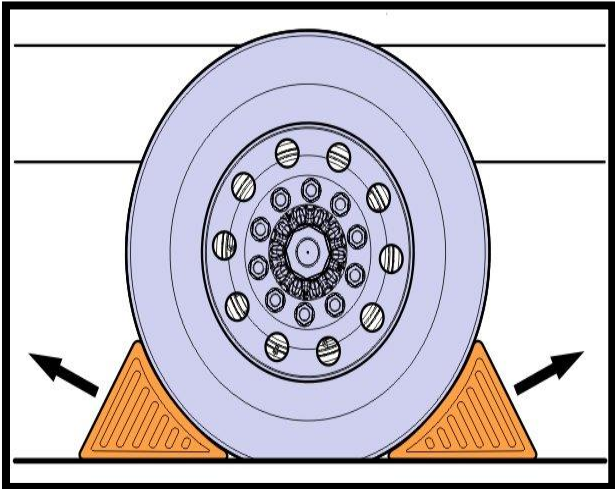


Tightening torque	
Tether, screw	58 ±10 Nm (42 ±7 lb _f ·ft)

29. Connect the battery cable to the negative terminal.



30. Remove the wheel chocks.



31. Release the vehicle to the customer.

Claiming Note:
If you choose to sublet the paint repairs, Include the invoice as an attachment. File sublet handling fee under other cost.

REIMBURSEMENT

This repair is covered by an authorized Safety Recall. Reimbursement is obtained through the normal claim handling process.	
	UCHP Reimbursement
Claim Type (used only when uploading from the Dealer Business System)	40
Recall Status	
Vehicle repaired per instructions	1-Modified per instructions
Labor Codes	
All Trucks	
8000-06-09-01, Body, Cab, Interior Inspection	0.3
Trucks Requiring Weld	
8521-03-02-02 Front Seat Replacement	0.4
8013-15-09-35 Paint Spot Repair (Sublet Optional)	3.0
1720-16-09-01 Campaign General - Drill and weld 18 locations (0.1 X 50)	5.0
8820-16-02-02 Interior Equipment	0.1
Causal Part	23336796
Authorization Number	C0305

Note: Dealers are to perform Safety Recalls on all subject vehicles at no charge to the vehicle owner regardless of mileage, age of vehicle or ownership (original purchaser or subsequent purchasers). Whenever vehicles are subject to a Safety Recall are brought to your dealership for service, or taken into your dealership vehicle inventory, it is strongly recommended that every effort be made to perform the recall correction before the vehicle is sold or released to the owner.